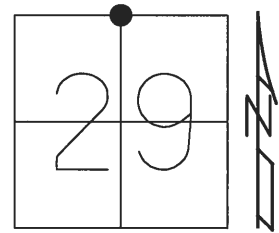


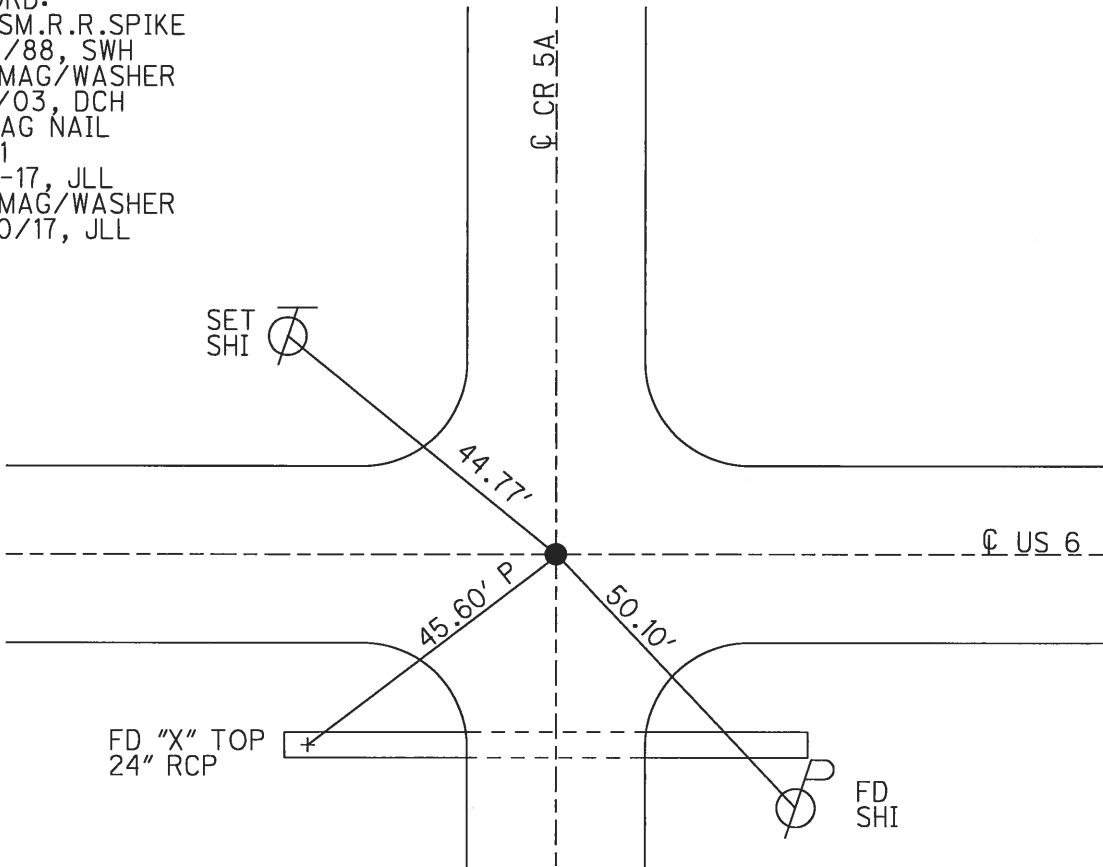
O.D.O.T. DISTRICT 2 SURVEY OFFICE (USE ONLY)

PERSONNEL _____ REFERENCE NO. 51 SHEET 14 OF 24
 NOTES LEU DATE 4/20/17 ROUTE US 6
 H.C. LEU WEATHER PARTLY CLOUDY COUNTY HENRY
 R.C. HELDMAN TEMP. 79° TOWNSHIP DAMASCUS
 SECTION 29
 T 5 N R 8 E

TYPE MONUMENT SM.R.R.SPIKE
 ON SURFACE - ~~BELOW~~ ON
~~LEFT~~ - ℄ PAV'T - RIGHT 0.5'
- TO - EDGE PAVEMENT
 S.L.M. 1235+83.82
 Grid: Northing: 624433.0849 Easting: 1564915.356



RECORD:
 SET SM.R.R.SPIKE
 6/20/88, SWH
 SET MAG/WASHER
 4/21/03, DCH
 FD MAG NAIL
 REF51
 4-20-17, JLL
 SET MAG/WASHER
 10/30/17, JLL

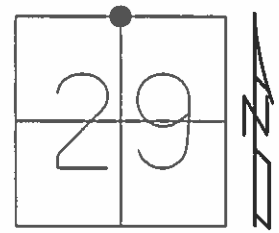


NOTES:
 SET R.R.SPIKE, USING 1' OFFSETS,
 OVER BRASS MON. GPS COORDINATE
 WAS SHOT ON BRASS MON. 11/4/15
 N= 624433.062
 E= 1564915.350
 ELEV= 697.384
 HENRY CO. ENGR.
 JUSTIN NIESE

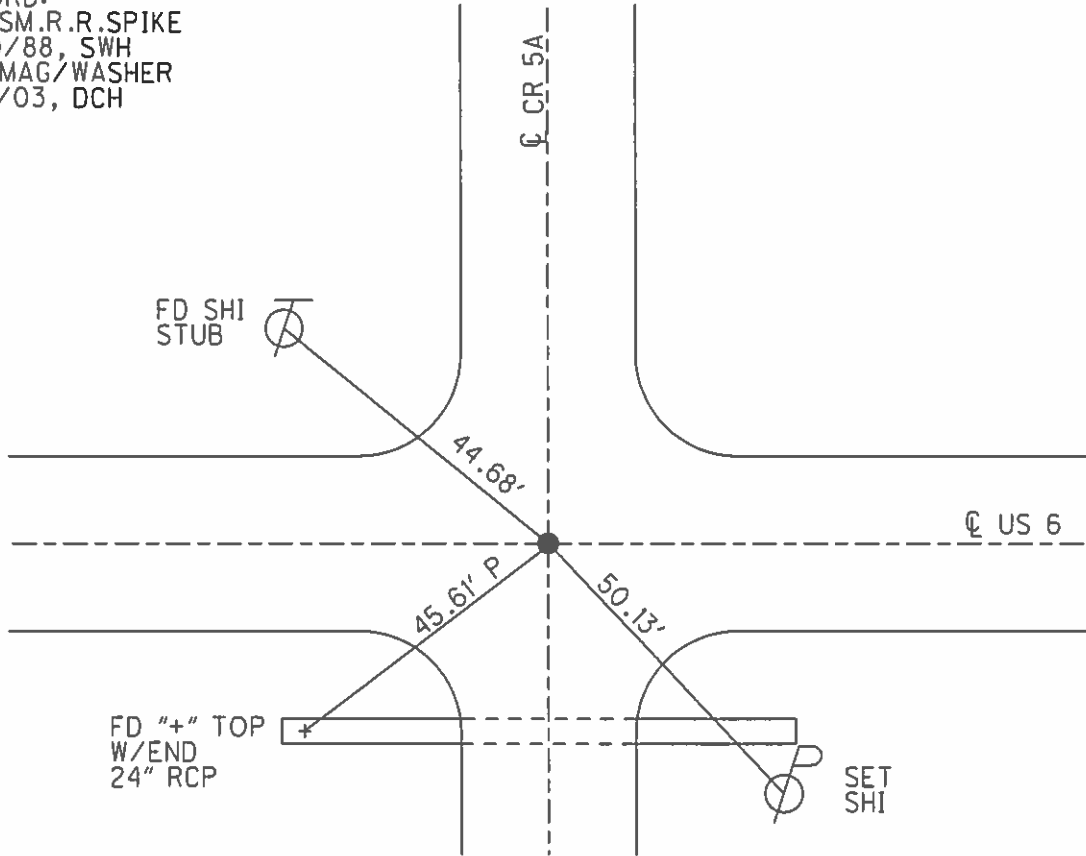
O.D.O.T. DISTRICT 2 SURVEY OFFICE (USE ONLY)

PERSONNEL _____ REFERENCE NO. 51 SHEET 8 OF 18
 NOTES HOMAN DATE 7/18/02 ROUTE SR 6
 H.C. ROUSOS WEATHER SUNNY COUNTY HENRY
 R.C. BEAUMONT TEMP. 90° TOWNSHIP DAMASCUS
 _____ CHLEBECK _____ SECTION 29
 T 5 N R 8 E

TYPE MONUMENT SM.R.R.SPIKE
 ON SURFACE - ~~BELOW~~ ON
 LEFT - ☉ PAV'T - RIGHT ON
 _____ TO _____ EDGE PAVEMENT
 S.L.M. 1238+68.8
 Grid: Northing: _____ Easting: _____



RECORD:
 SET SM.R.R.SPIKE
 6/20/88, SWH
 SET MAG/WASHER
 4/21/03, DCH



NOTES:
 SET R.R.SPIKE, USING 1' OFFSETS,
 OVER BRASS MON. GPS COORDINATE
 WAS SHOT ON BRASS MON. 11/4/15
 N= 624433.062
 E= 1564915.350
 ELEV= 697.384
 HENRY CO. ENGR.
 JUSTIN NIESE

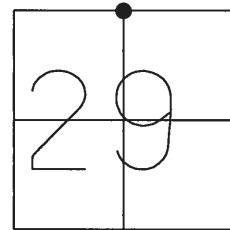
UPDATED TIES BY HENRY CO:
 44.95' NNW TO DUPLEX IN E/S
 OF WOOD BURIED CABLE MARKER POST,
 50.08' SSE TO NAIL/SHI IN
 N/S OF PP
 46.68' SE TO CHISELED \"+\" IN E/END RCP,
 45.56' SW TO CHISELED \"+\" IN W/END RCP

O.D.O.T. DISTRICT 2 SURVEY OFFICE (USE ONLY)

PERSONNEL _____ REFERENCE NO. 51 SHEET 8 OF 17

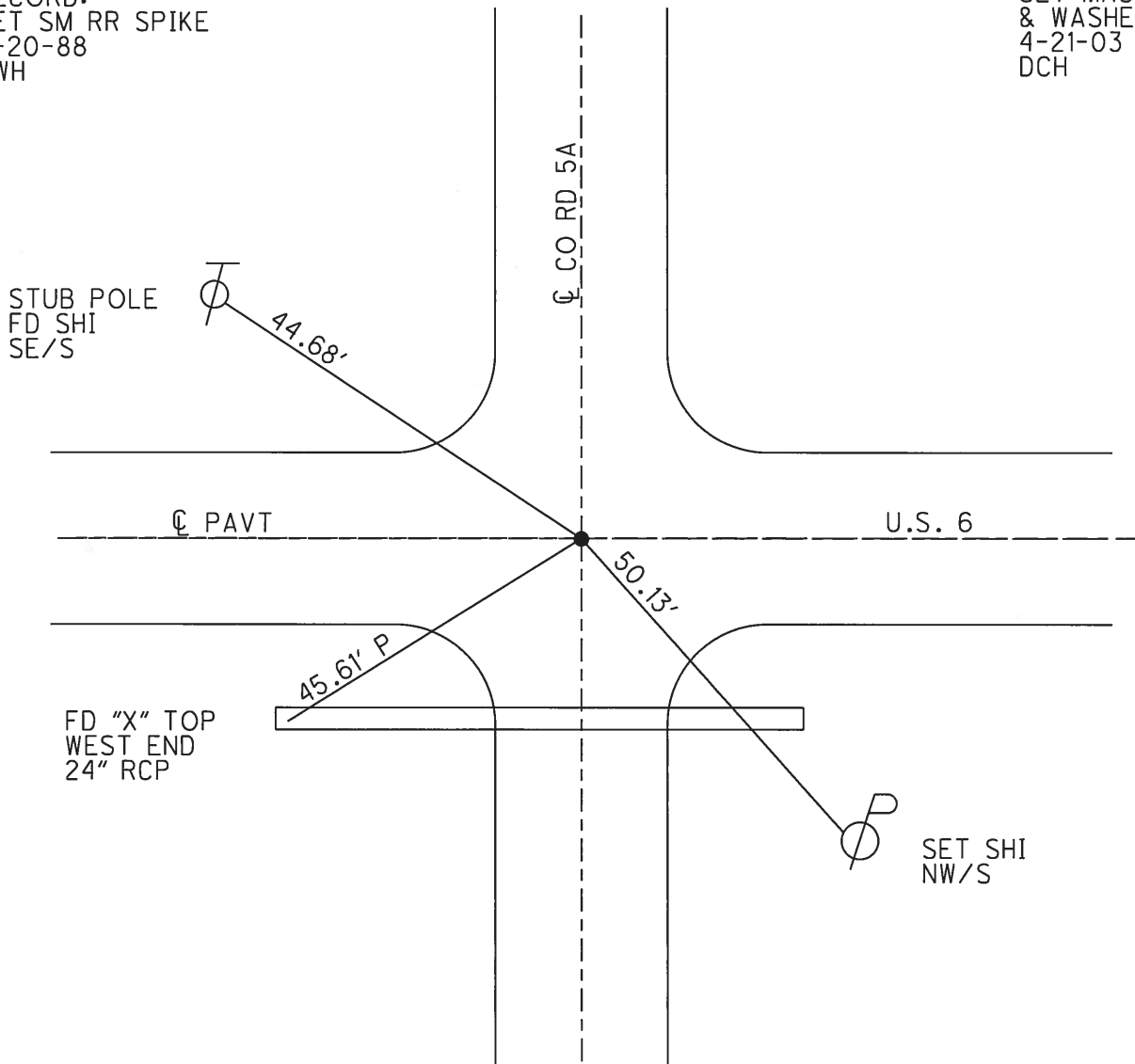
NOTES HOMAN DATE 7-18-02 ROUTE US 6
 H.C. ROUSOS WEATHER SUNNY COUNTY HENRY
 R.C. BEAUMONT TEMP. 90° TOWNSHIP DAMASCUS
CHLEBECK SECTION 29
T 5 N R 8 E

TYPE MONUMENT SM RR SPIKE
 ON SURFACE - ~~BELOW~~ YES
~~LEFT -~~ CL PAV'T - ~~RIGHT~~ ON
TO EDGE PAVEMENT
 S.L.M. 1238+68.8



RECORD:
 SET SM RR SPIKE
 6-20-88
 SWH

SET MAG NAIL
 & WASHER
 4-21-03
 DCH



O.D.O.T. DISTRICT 2 SURVEY OFFICE

PERSONNEL

REFERENCE NO. 51

SHEET 8 OF

NOTES HOFFMAN

H.C. BARNHISEL

R.C. LOEHRKE

DATE 4-8-88

WEATHER CLEAR

TEMP. 40°

ROUTE US 6

COUNTY HENRY

TOWNSHIP DAMASCUS

SECTION 29

T. S R. E

TYPE MONUMENT PK Nail

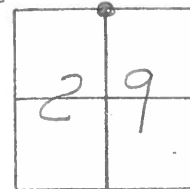
ON SURFACE - BELOW YES

LEFT - & PAV'T. - RIGHT YES

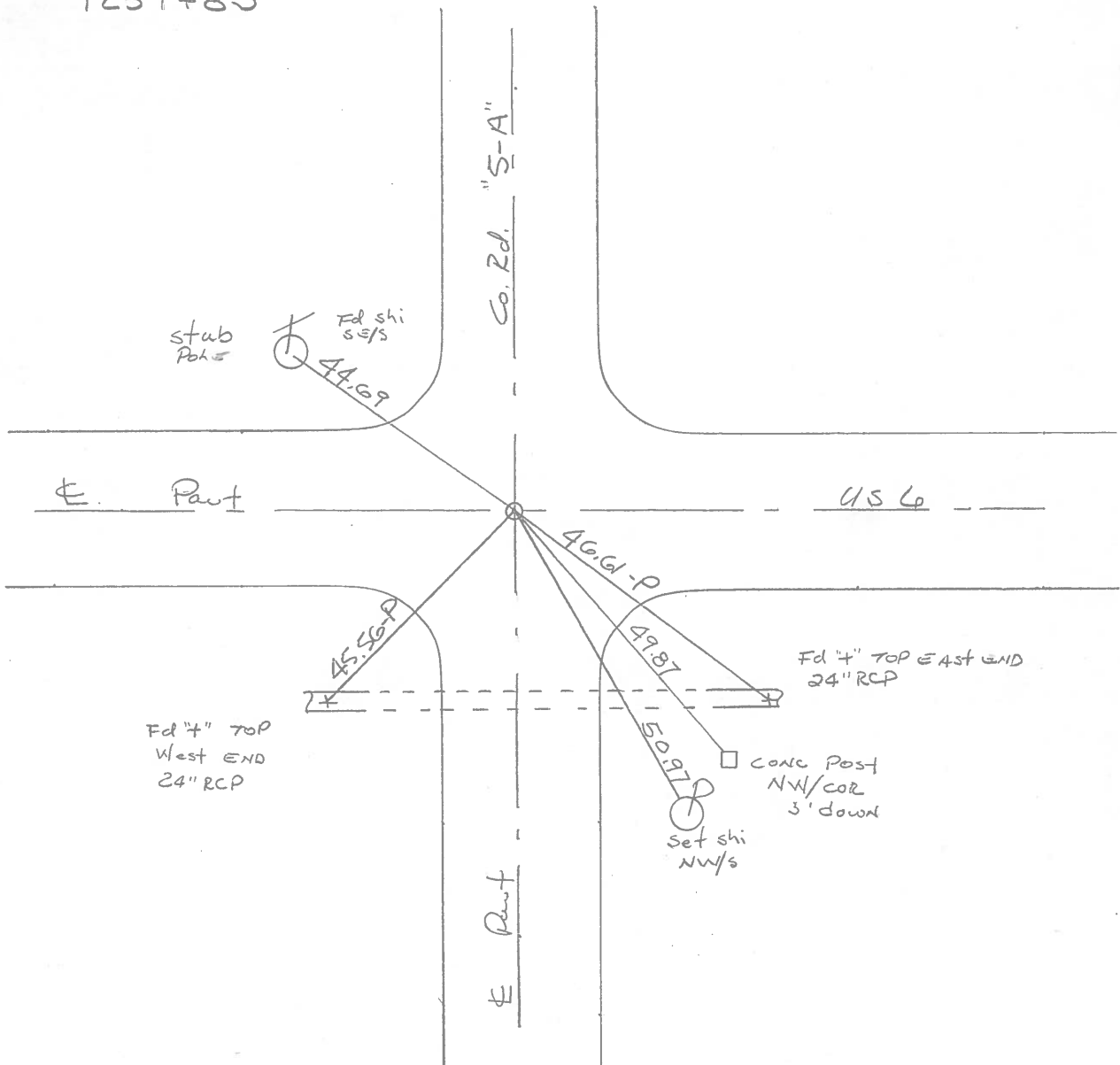
TO EDGE PAVEMENT \pm of BOTH PAVTS

S.L.M. 1123 + 27

Set SMALL RR SPIKE
6-20-88 SWH



1237+85

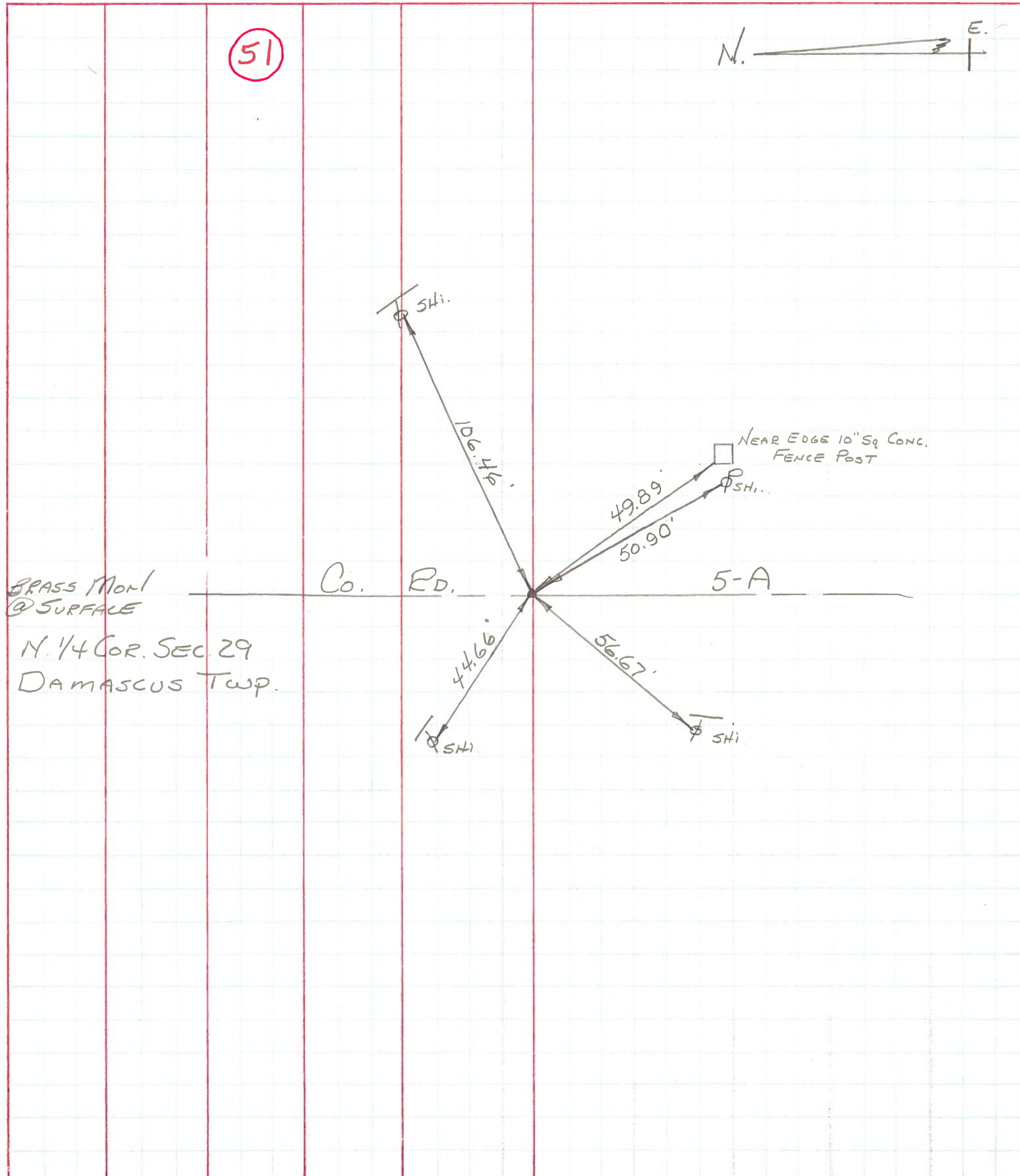


PERSONNEL	TITLE	PERSONNEL	TITLE
BURNSIDE			
SMITH			
BOWERS			
HOLCOMBE			

COUNTY HENRY DATE 5-26-71
 S. R. U.S. 6 WEATHER Cloudy
 SEC. _____ TEMP. +72

DESCRIPTION _____ LEFT _____ CENTER LINE _____ RIGHT _____ JOB NO. _____

(51)



OK -10-72 BRASS MONI @ SURFACE

N. 1/4 COR. SEC. 29 DAMASCUS TWP.

PERSONNEL TITLE PERSONNEL TITLE

Jamison noter COUNTY Henry DATE 9-16-57

Williams _____ S. R. V. 5. 6 WEATHER Clear.

Matzger _____ SEC. _____ TEMP. 70°

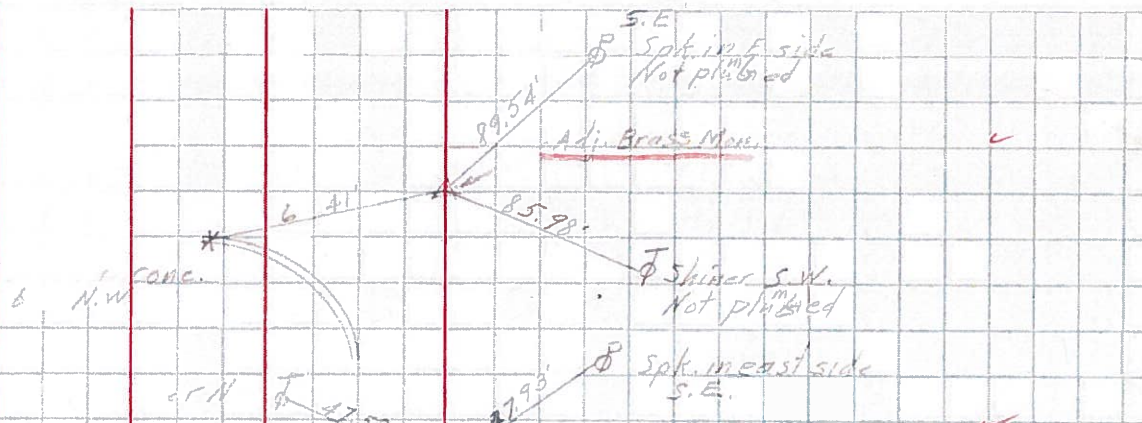
Robinson _____

DESCRIPTION Witn 29 a. n. n. JOB NO. _____

LEFT CENTER LINE RIGHT

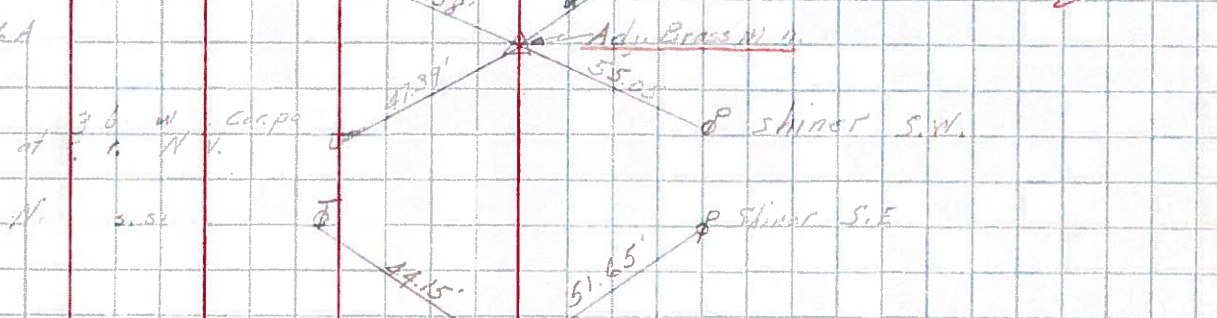
48

C. Road No



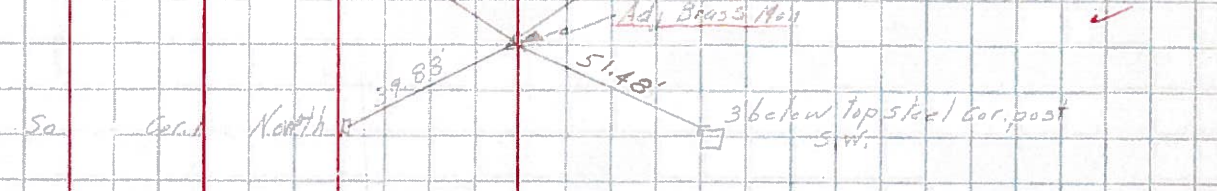
49

Twp Rd 6d



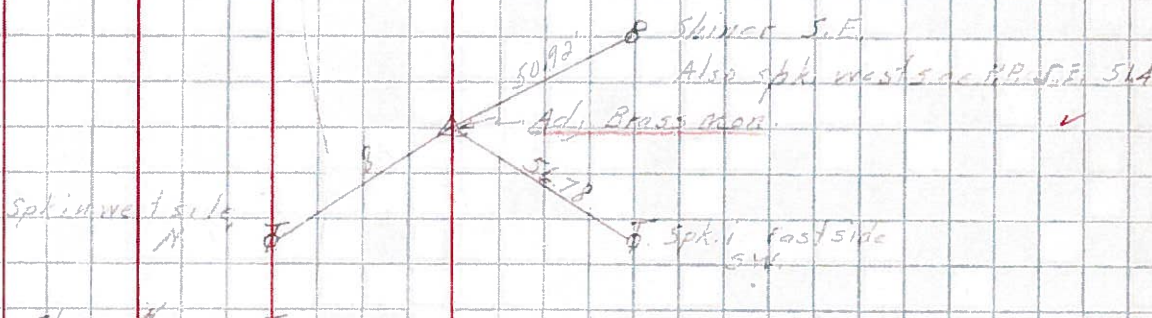
50

Twp Rd 6



51

Co Rd 5A



52

Co Rd 5

