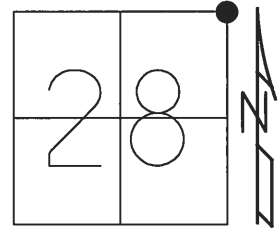


O.D.O.T. DISTRICT 2 SURVEY OFFICE (USE ONLY)

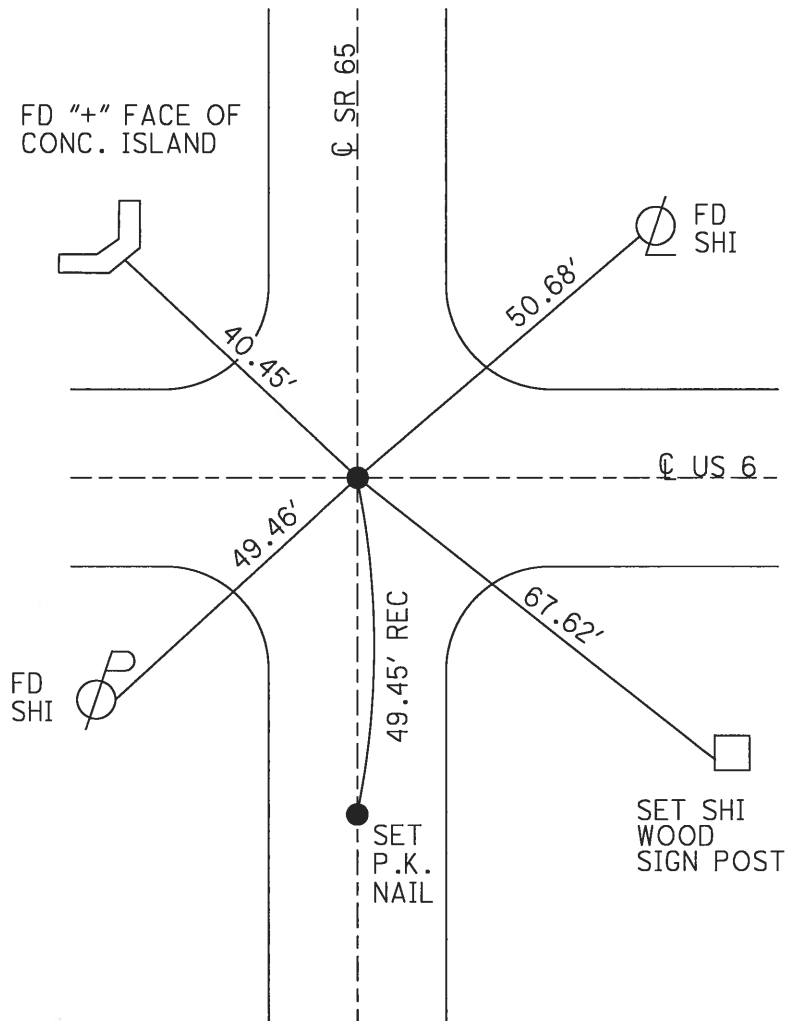
PERSONNEL _____ REFERENCE NO. 54 SHEET 17 OF 24
 NOTES HELDMAN DATE 4/20/17 ROUTE US 6
 H.C. LEU WEATHER PARTLY CLOUDY COUNTY HENRY
 R.C. HELDMAN TEMP. 79° F TOWNSHIP DAMASCUS
 SECTION 28
 T 5 N R 8 E

TYPE MONUMENT IPIN SHAFT F/BRASS "MOBORA" MON
~~ON SURFACE~~ - BELOW 5"
~~LEFT~~ - ☉ PAV'T - ~~RIGHT~~ ON
- TO - EDGE PAVEMENT
 S.L.M. 24.96 STA: 1315+69.45
 GRID: NORTHING: 624351.3697 EASTING: 1572900.554



NOTE: SR 65 REF 28C

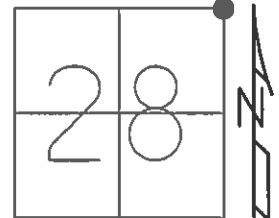
- RECORD:
 FD IPIN
 2-19-52
 6-09-54
 SET MOBARA
 (BRASS) MON
 8-20-54
 FD BRASS MON
 5-10-72
 FD BRASS MON
 W/"+" ON TOP
 2-01-84, SWH
 FD R.R.SPIKE
 4-08-88, SWH
 SET SM R.R.SPIKE
 6-20-88, SWH
 FD SM.R.R.SPIKE
 10-10-96, BVD
 7-18-02, DCH
 SET MAG/WASHER
 4-21-03, DCH
 FD MAG/WASHER
 9-29-10, JMH
 FIN C28
 3-15-13, MC
 SET MAG/WASHER
 10/30/17, JLL



O.D.O.T. DISTRICT 2 SURVEY OFFICE (USE ONLY)

PERSONNEL _____ REFERENCE NO. 54 SHEET 11 OF 18
 NOTES HUSS DATE 06-06-12 ROUTE US 6
 H.C. HUSS WEATHER SUNNY COUNTY HENRY
 R.C. CANTERBURY TEMP. +74° F TOWNSHIP DAMASCUS
 _____ SECTION 28
 _____ T 5 N R 8 E

TYPE MONUMENT MAG/WASHER
 ON SURFACE - ~~BELOW~~ ON
~~LEFT~~ - ☉ PAV'T - ~~RIGHT~~ ON
TO - EDGE PAVEMENT
 S.L.M. 24.96 STA: 1317+88.88

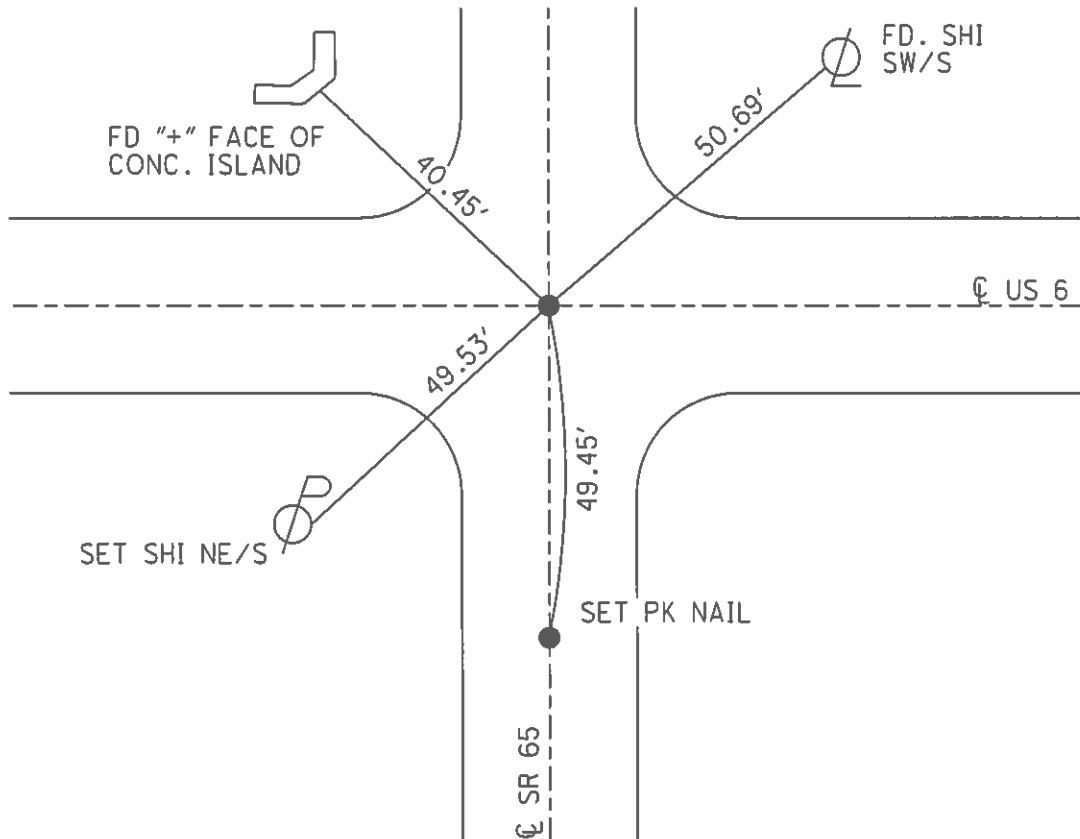


GRID: NORTHING: 624351.412 EASTING: 1572900.522

RECORD

02-19-52 FD. IRON PIN	05-10-72 FD. BRASS MON.	06-20-88 SWH SET SM. RRSPK	04-21-03 DCH SET MAG/W
06-09-54 FD. IRON PIN	02-01-84 SWH FD. BRASS MON. W/"+" ON TOP	10-10-96 BVD FD. SM. RR SPIKE AT SURFACE.	09-29-10 JMH FD. MAG/W
08-20-54 SET MOBARA (BRASS) MON.	04-08-88 SWH FD. RRSPK	07-18-02 DCH FD. SM. RRSPK	03-15-13 MC POINT NOT COVERED GPS, FIN C28 (IN JOB HEN 65 1352)

NOTE: REF #28C ON SR 65



O.D.O.T. DISTRICT 2 SURVEY OFFICE

PERSONNEL

REFERENCE NO. 28-C
57 U.S. 6

SHEET 4 OF 4

NOTES STEVE HUSS

H.C. BOB VAUDUSEN

R.C. KEVIN MOSER

DATE 6-22-95

WEATHER CLEAR

TEMP. 79°F

ROUTE 65

COUNTY HENRY

TOWNSHIP DAMASCUS

SECTION 28

T S N R B E

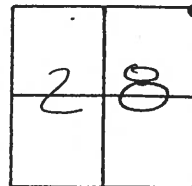
TYPE MONUMENT BRASS PLATE

ON SURFACE - ~~BELOW~~ YES

LEFT-~~C PAUT~~ T. RIGHT 2.6' LT S.R. 65 N

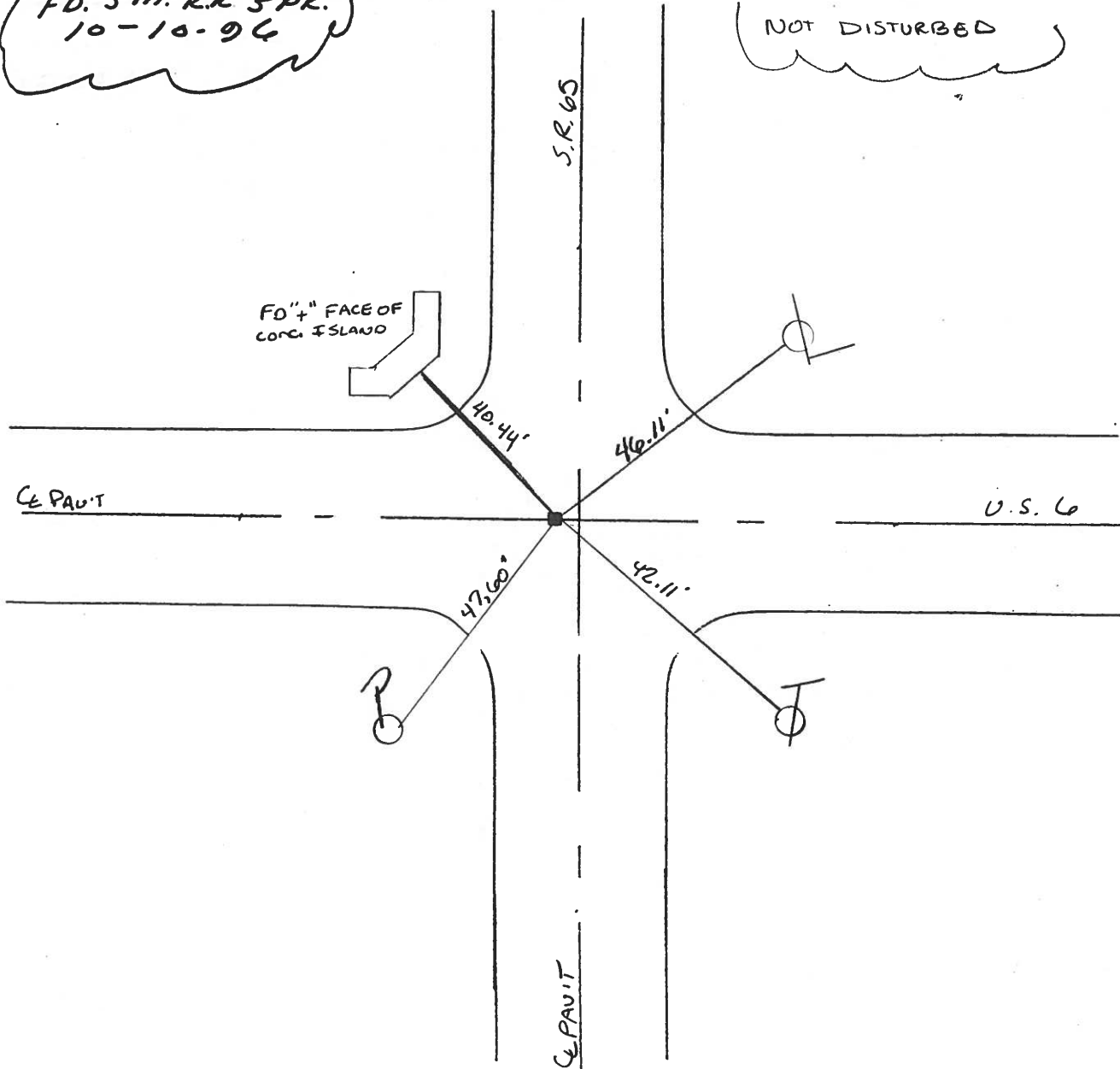
TO EDGE PAVEMENT

S.L.M. 742+83 S.R. 65 1317+71 U.S. 6



FD. 5m. R.R. SPK.
10-10-96

NOT DISTURBED



Resurfaced 1996

O.D.O.T. DISTRICT 2 SURVEY OFFICE

PERSONNEL

REFERENCE NO. 54

SHEET 11 OF

NOTES HOFFMAN

H.C. BARWISER

R.C. LOSHRKE

DATE 4-8-88

WEATHER CLEAR

TEMP. 40°

ROUTE US 6

COUNTY HENRY

TOWNSHIP DAMASCUS

SECTION 28

T 5 N R 8 E

TYPE MONUMENT RR SPIKE

Set small RR spike
6-20-88 swA

~~ON SURFACE~~ - BELOW 1"

~~LEFT & PAV'T. - RIGHT~~ YES

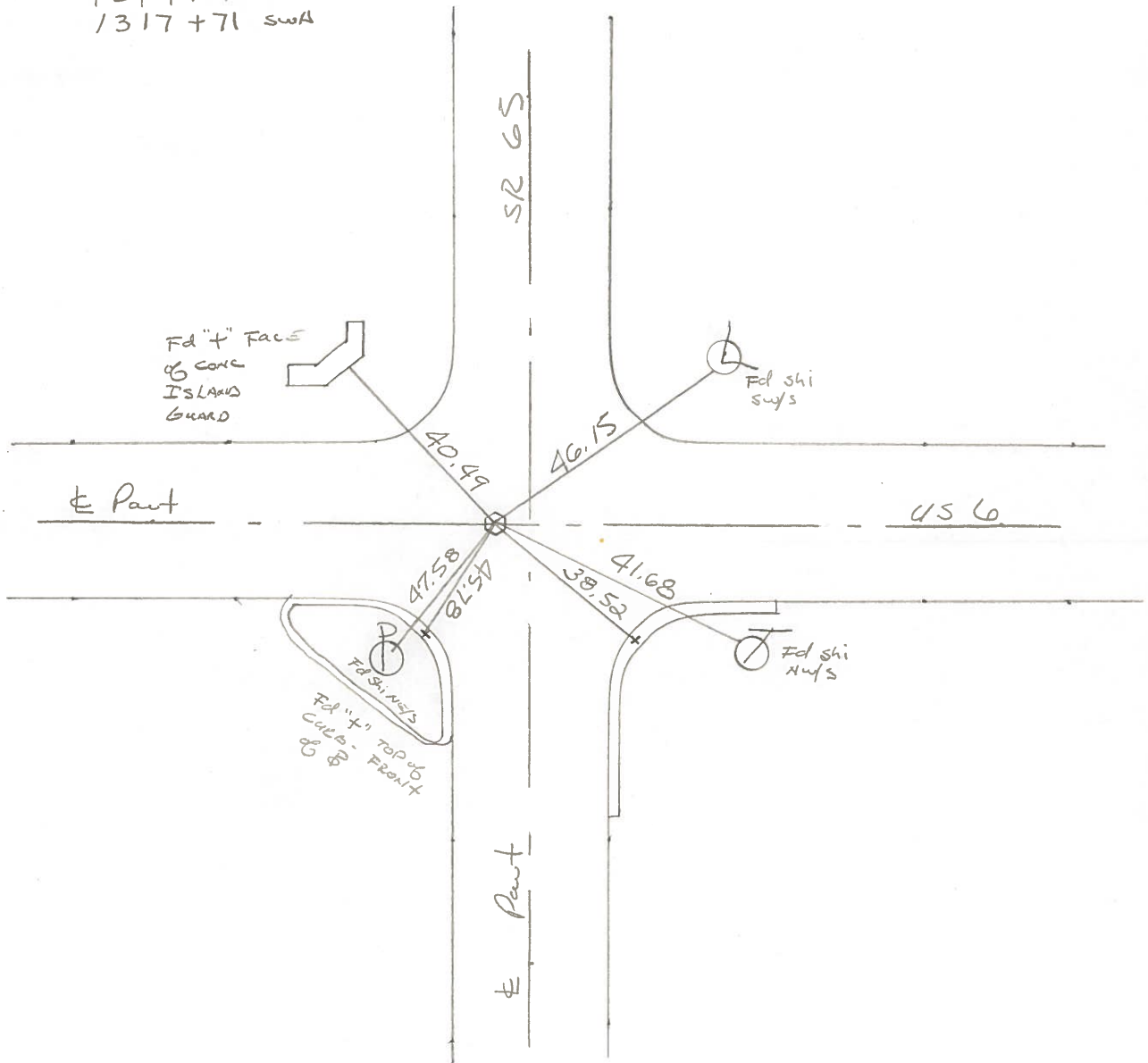
TO EDGE PAVEMENT 3' west of to Point SR65

S.L.M. 1205+13 1203+13

21	22
28	27



~~1319+71~~
1317+71 swA



PERSONNEL TITLE PERSONNEL TITLE

COUNTY HENRY

DATE 6-1-71

S. R. U.S. 6

WEATHER CLOUDY

SEC. McCLORE

TEMP. +72°

DESCRIPTION

LEFT

CENTER LINE

RIGHT

JOB NO.

54



N.E. COR. SEC 28
DAMASCUS TWP.

S. R.

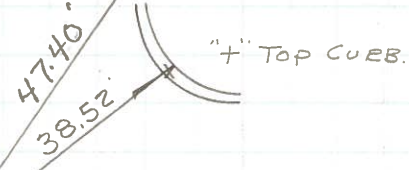
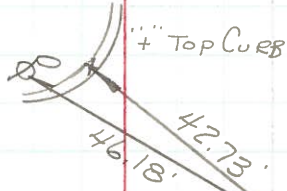
65

BRASS MON.
@ SURFACE

4" FACE CONC.
ISLAND GUARD

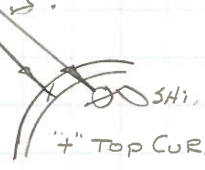
TOP
NEAR COR. CONC. BASE
R.R. FLASHER LIGHT

SHI.



40.45'

47.57'
45.77'



JK
-10-72

Personnel

Title

Date

County

Henry

Sheet No.

3

Weather

S. R. No. U.S. # 6

Section

Job No. 02111

CORNER STONES CONT

#105

8/20/54
Set Mobarra Mon.

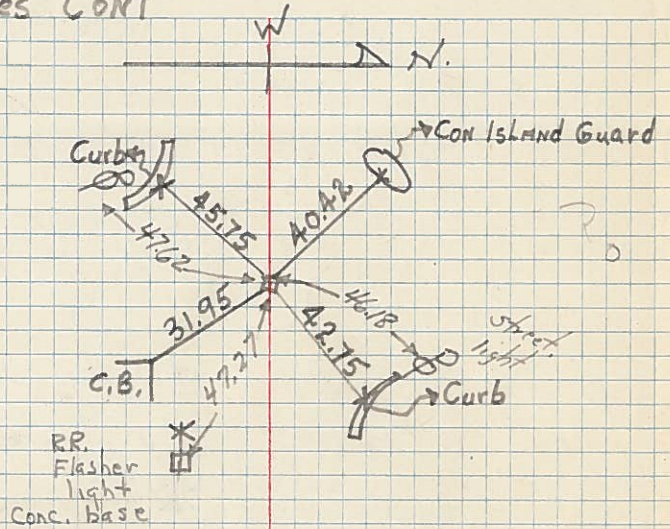
54

N.E. Cor. Sec. 28 & Int. McClure
(found Iron Pin 2/19/52)
U.S. # 6 & S.R. # 65
Found I. Pin 4/9/54

O.K.

1203 + 23.80

W
mark



Personnel

Title

Date

County

Henry

Sheet No.

3

Weather

S. R. No.

WS# 6

Section

Job No.

02111

CORNER STONES CONT

54

N.E. Cor. Sec. 28 & Int. McChure
(found from Pin 2/19/52)

