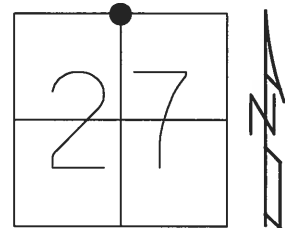


**O.D.O.T. DISTRICT 2 SURVEY OFFICE (USE ONLY)**

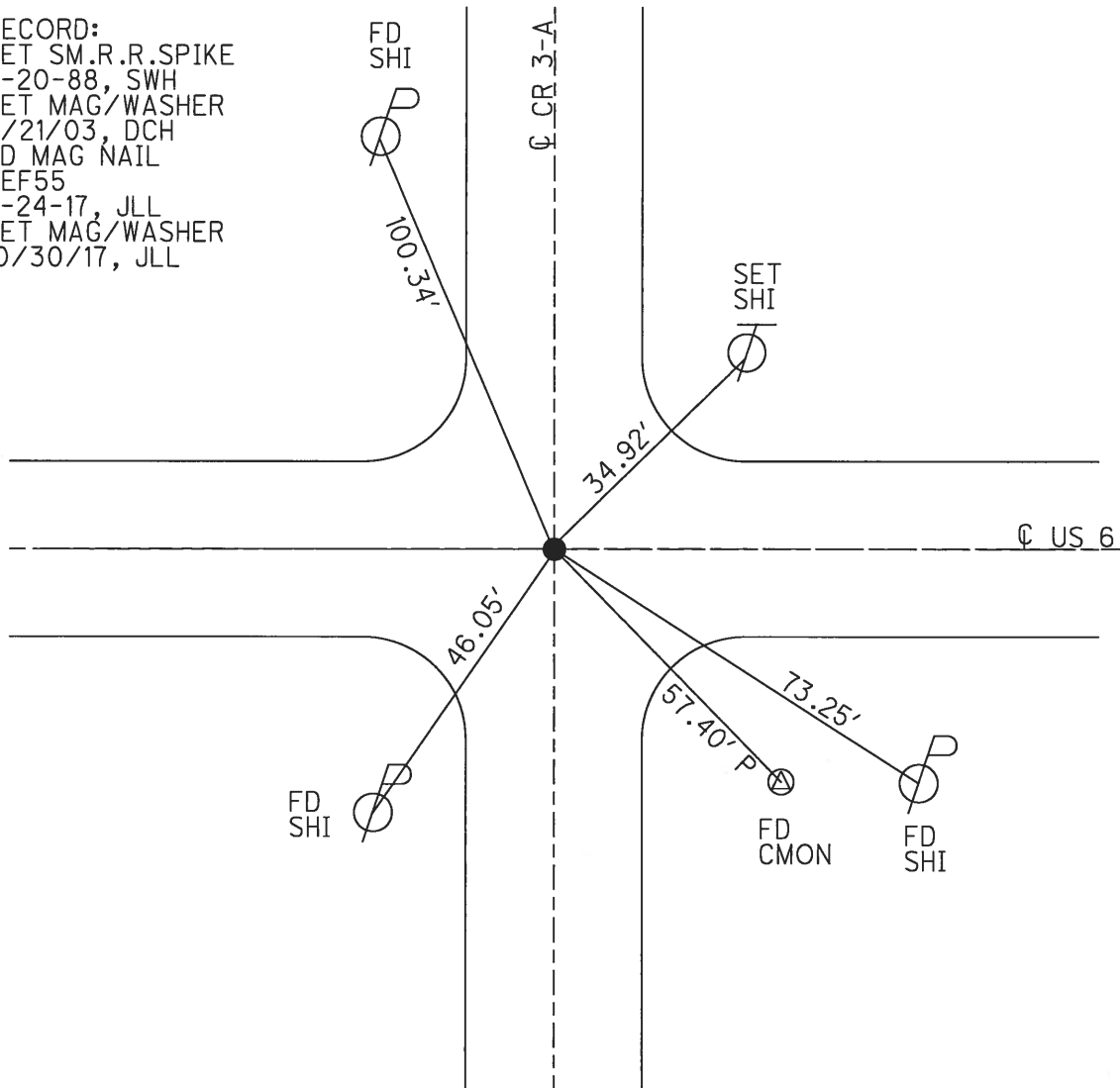
PERSONNEL \_\_\_\_\_ REFERENCE NO. 55 SHEET 18 OF 24  
 NOTES RHOADES DATE 4/24/17 ROUTE US 6  
 H.C. LEU WEATHER SUNNY COUNTY HENRY  
 R.C. HELDMAN TEMP. 44° TOWNSHIP DAMASCUS  
 \_\_\_\_\_ SECTION 27  
 \_\_\_\_\_ T 5 N R 8 E

TYPE MONUMENT P.K./WASHER  
 ON SURFACE - ~~BELOW~~ ON \_\_\_\_\_  
~~LEFT~~ - CL PAV'T - RIGHT 0.5'  
12.0' TO RT EDGE PAVEMENT  
 S.L.M. 1342+18.90



GRID: NORTHING: 624329.1229 EASTING: 1575549.91

RECORD:  
 SET SM.R.R.SPIKE  
 6-20-88, SWH  
 SET MAG/WASHER  
 4/21/03, DCH  
 FD MAG NAIL  
 REF55  
 4-24-17, JLL  
 SET MAG/WASHER  
 10/30/17, JLL



O.D.O.T. DISTRICT 2 SURVEY OFFICE (USE ONLY)

PERSONNEL

REFERENCE NO. 55

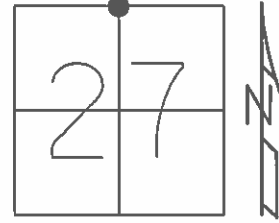
SHEET 12 OF 18

NOTES HOMAN  
 H.C. ROUSOS  
 R.C. BEAUMONT  
CHLEBECK

DATE 7/18/02  
 WEATHER SUNNY  
 TEMP. 90°

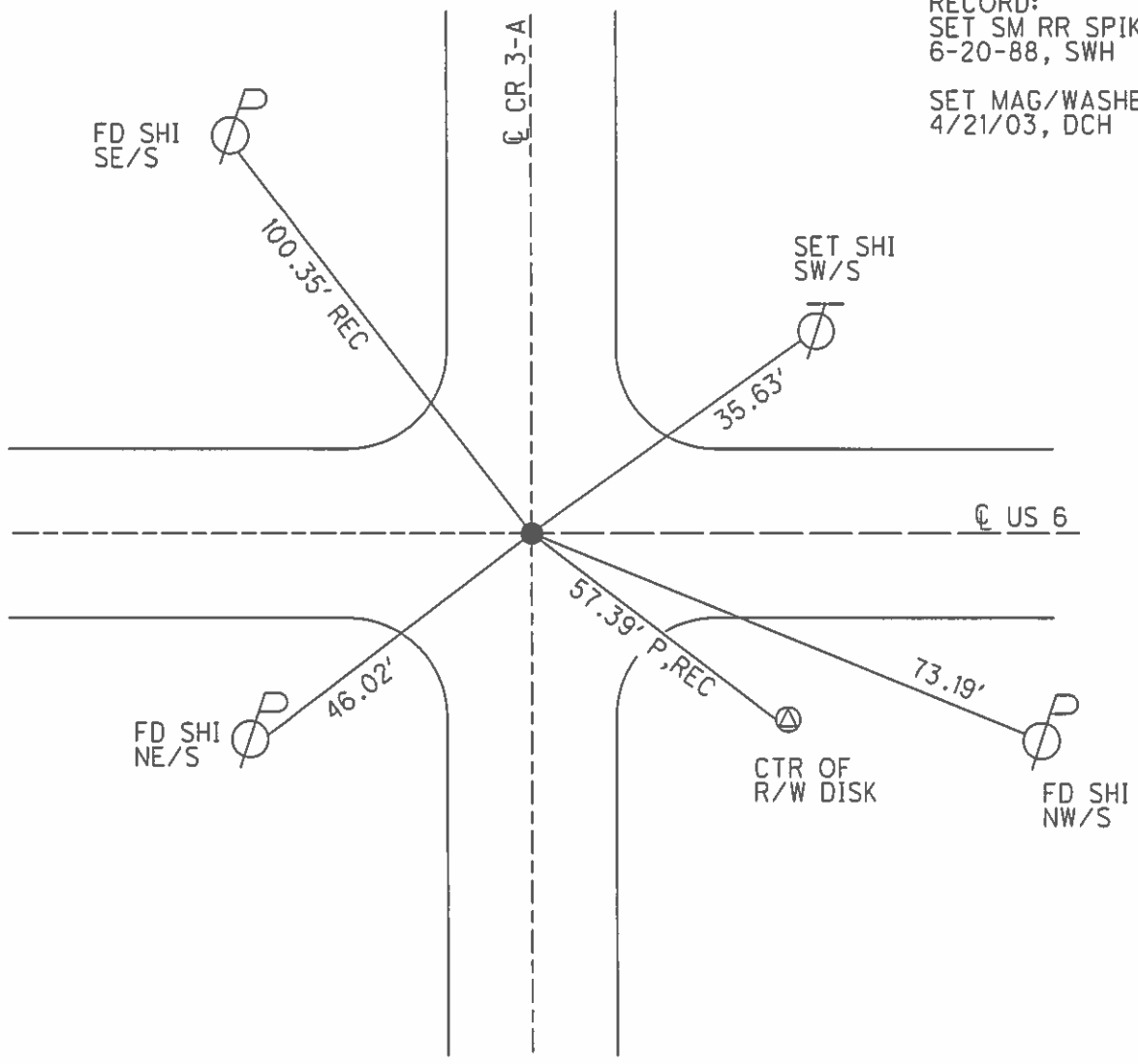
ROUTE US 6  
 COUNTY HENRY  
 TOWNSHIP DAMASCUS  
 SECTION 27  
T 5 N R 8 E

TYPE MONUMENT PK/WASHER  
 ON SURFACE - ~~BELOW~~ ON  
 LEFT - ☉ PAV'T - RIGHT ON  
12.0' TORT EDGE PAVEMENT  
 S.L.M. 1344+28.8



GRID: NORTHING: \_\_\_\_\_ EASTING: \_\_\_\_\_

RECORD:  
 SET SM RR SPIKE  
 6-20-88, SWH  
 SET MAG/WASHER  
 4/21/03, DCH



# O.D.O.T. DISTRICT 2 SURVEY OFFICE

PERSONNEL \_\_\_\_\_

REFERENCE NO. 55

SHEET 1 OF 6

NOTES S. HUSS

H.C. B. VAN DUSEN

R.C. T. ROUSOS

DATE 6-13-95

WEATHER SUNNY

TEMP. +74° F

ROUTE U.S. 6

COUNTY HENRY

TOWNSHIP DAMASCUS

SECTION 27

T. 5 N R. 8 E

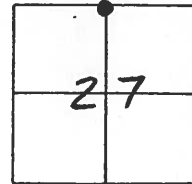
TYPE MONUMENT PK NAIL & WASHER

ON SURFACE - BELOW YES

LEFT - & PAVT. - RIGHT YES ON & C.R. 3-A NORTH

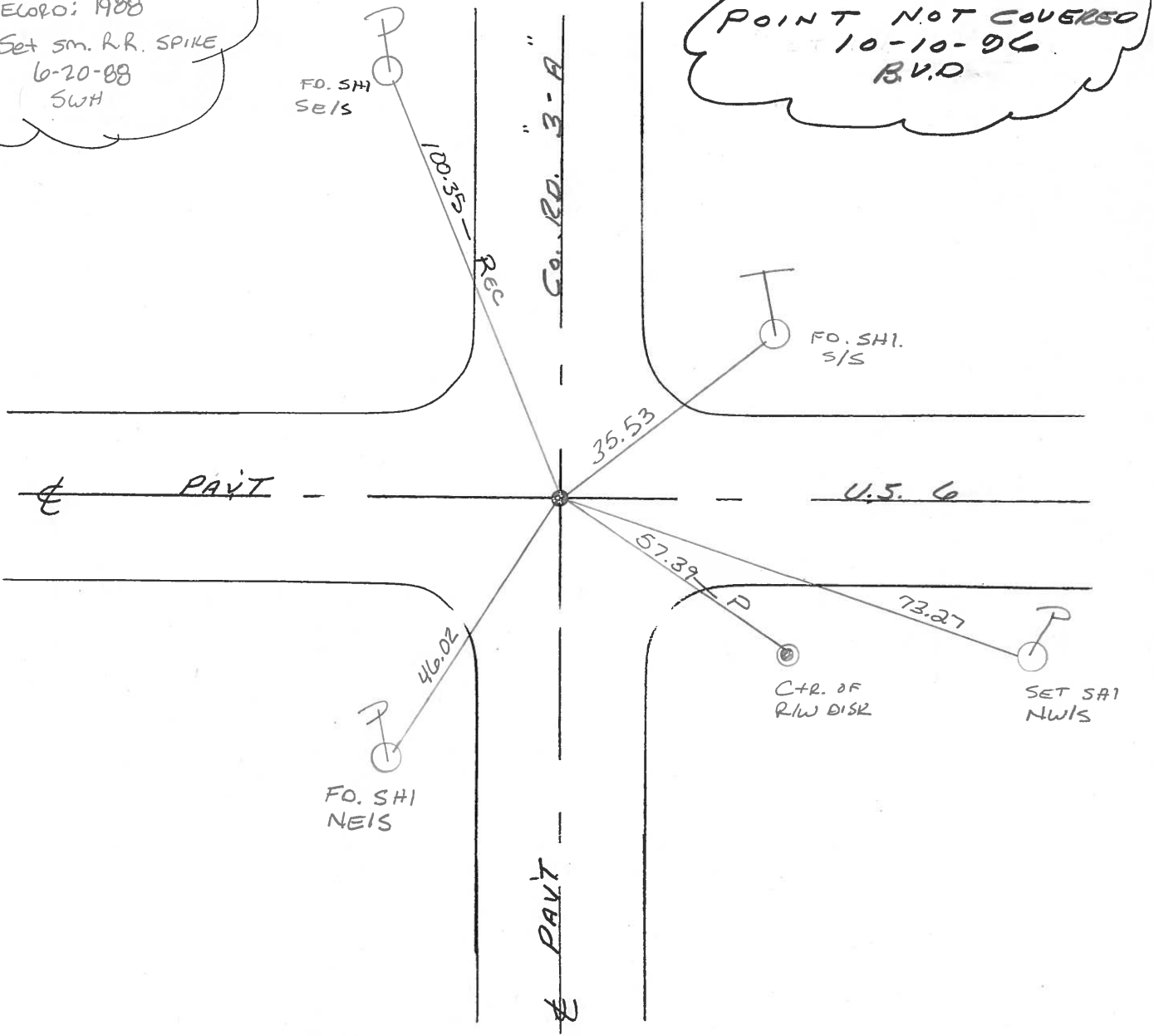
11.8 TO RT EDGE PAVEMENT

S.L.M. 1344+18



RECORD: 1988  
Set sm. R.R. SPIKE  
6-20-88  
SWH

POINT NOT COVERED  
10-10-96  
B.V.D.



# O.D.O.T. DISTRICT 2 SURVEY OFFICE

PERSONNEL

REFERENCE NO. 55

SHEET 12 OF       

NOTES HOFFMAN

H.C. BARNHISEL

R.C. LOSHRKE

DATE 4-8-88

WEATHER CLEAR

TEMP. 40°

ROUTE US 6

COUNTY HENRY

TOWNSHIP DAMASCUS

SECTION 27

T5 NR 8 E

TYPE MONUMENT P.K. Nail SHANK

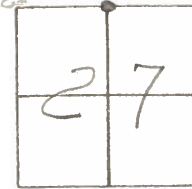
ON SURFACE - ~~BELOW~~ YES

~~LEFT - & PAV'T.~~ - RIGHT 0.7'

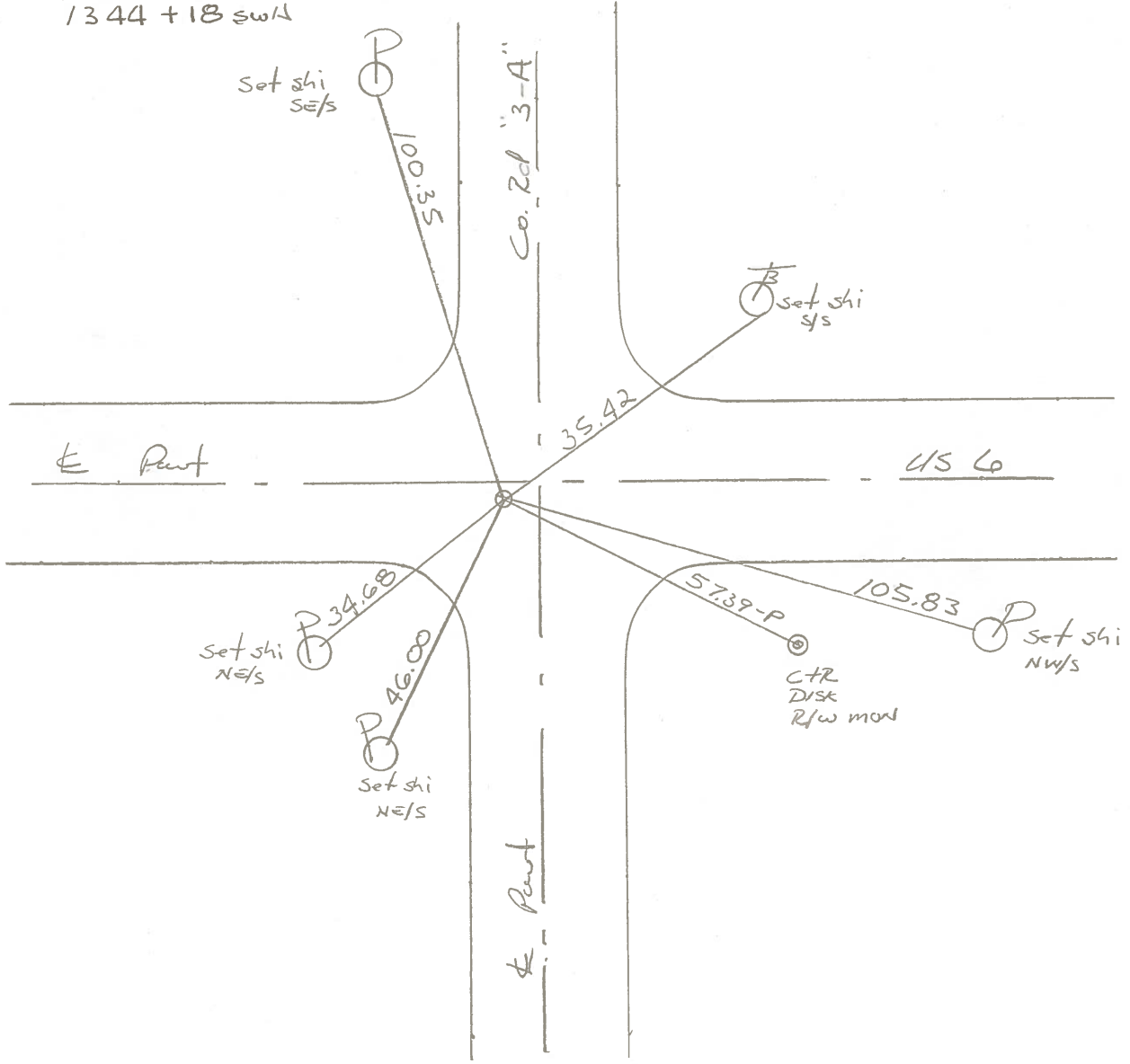
TO EDGE PAVEMENT 1.5' West of Point Co. Rd 3-A, SOUTH

S.L.M. 1231+60 - 1229+60

Set small RR spike  
6-20-88 SWK



~~1346+18~~  
1344+18 SW/L



County HENRY S.R. 6

Date 5-31-79

Township DAMASCUS

Weather Cloudy

Section N<sup>1</sup>/<sub>4</sub> Post SEC. 27

Temp. +63°

T5N, R8E

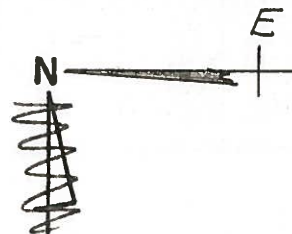
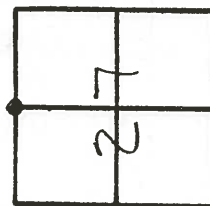
Personnel BURNSIDE

SMITH

BOWERS

KNAPE

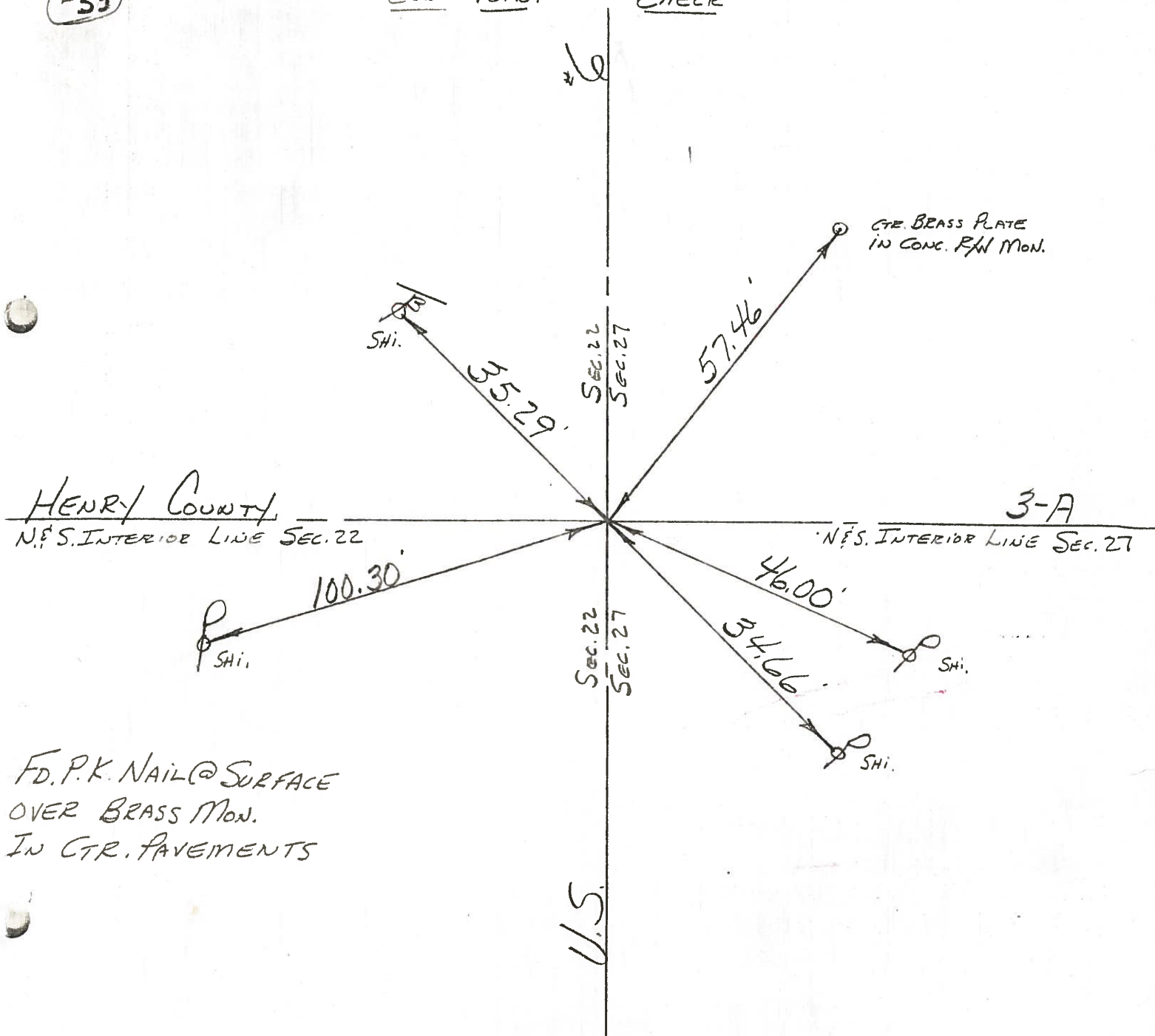
MEAD



#55

END POINT

CHECK



FD.P.K. NAIL @ SURFACE  
OVER BRASS MON.  
IN CTR. PAVEMENTS

PERSONNEL TITLE PERSONNEL TITLE

COUNTY HENRY

DATE 6-1-71

S. R. U.S. #6

WEATHER Cloudy

SEC.

TEMP. +72°

DESCRIPTION

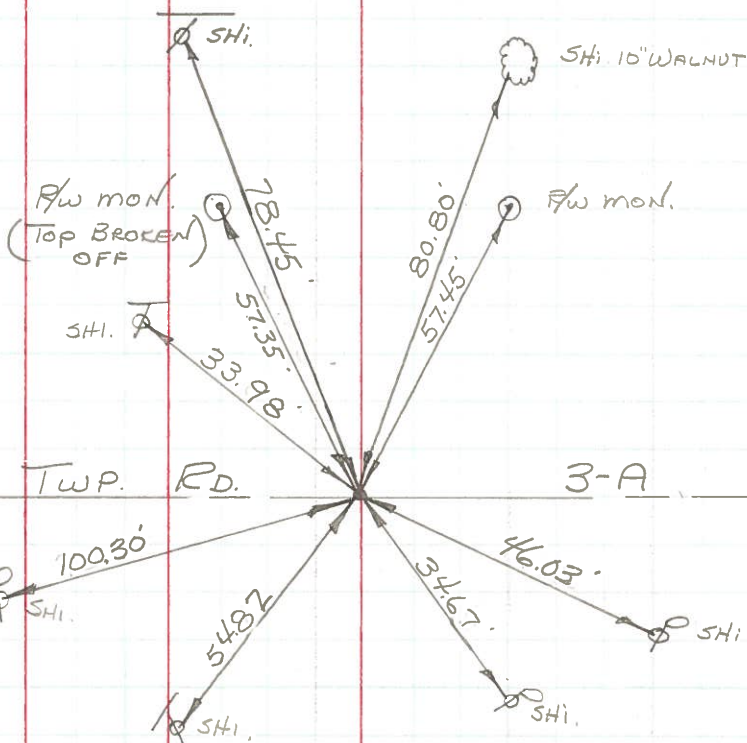
LEFT

CENTER LINE

RIGHT

JOB NO.

55



BRASS MON.  
@ SURFACE  
N. 1/4 COR. SEC. 27  
DAMASCUS TWP.

OK  
6-10-72

Date

County

Henry

Sheet No.

2

Weather

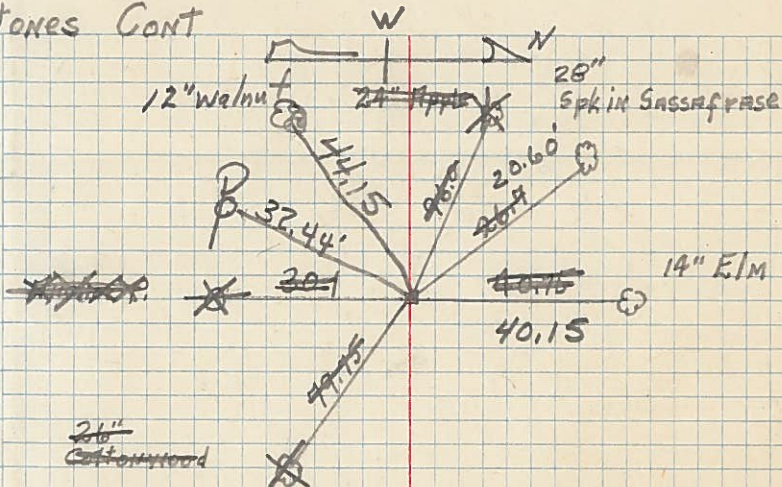
S. R. No. U.S. # 6

Section

Job No. 02111

Corner Stones Cont

Chain Dist. From  
U.S. # 6 & 65

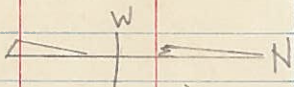


57

Set Mobara Mon.  
1/2 Sec. Between 23 & 26

1282 + 64.94

22 1/2  
walnuts  
to E

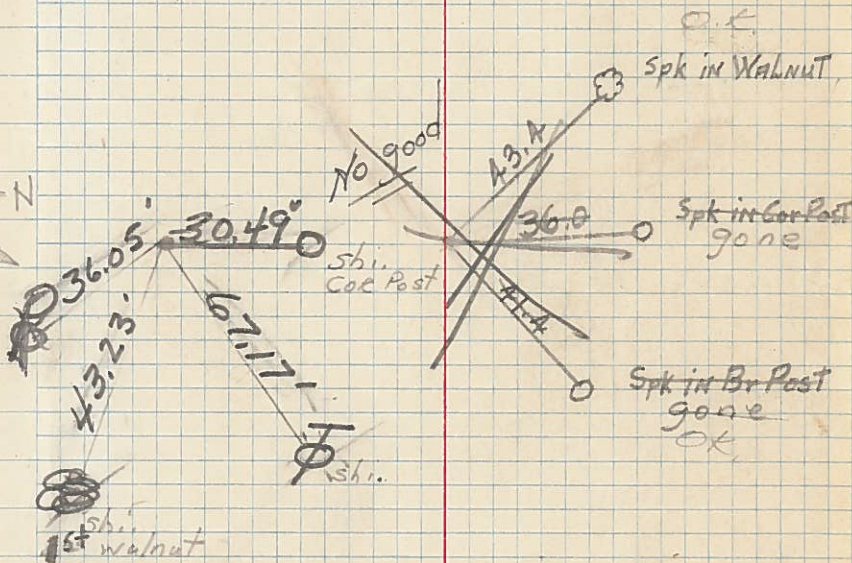


N.E. Cor. Sec 27  
P.K. Nail.

Set Mobara Mon.  
8/20/54

1256 + 15.88

19  
walnuts  
to E



56

8/20/54  
Found Stone - Set Mobara Mon

1/2 Sec Between 22 & 27  
(found Stone 2/19/52.)

Ed. Nail  
6/9/54

1229 + 73.15

55

