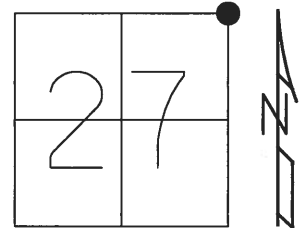


O.D.O.T. DISTRICT 2 SURVEY OFFICE (USE ONLY)

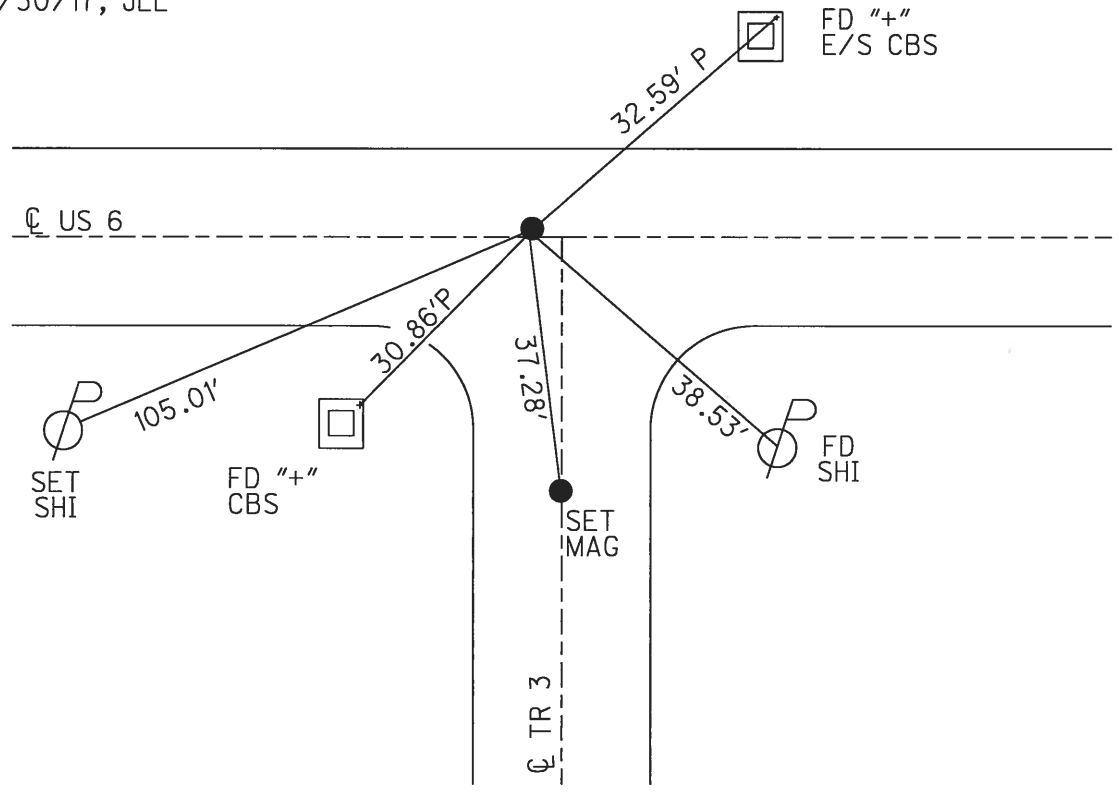
PERSONNEL _____ REFERENCE NO. 56 SHEET 19 OF 24
 NOTES RHOADES DATE 4/24/17 ROUTE US 6
 H.C. LEU WEATHER SUNNY COUNTY HENRY
 R.C. HELDMAN TEMP. 44° TOWNSHIP DAMASCUS
 _____ SECTION 27
 _____ T 5 N R 8 E

TYPE MONUMENT _____ P.K./WASHER
 ON SURFACE - ~~BELOW~~ _____ ON _____
 LEFT - ☉ PAV'T - ~~RIGHT~~ _____ 0.4'
11.6' TO LT EDGE PAVEMENT
 S.L.M. 1368+61.70



GRID: NORTHING: 624306.9965 EASTING: 1578192.657

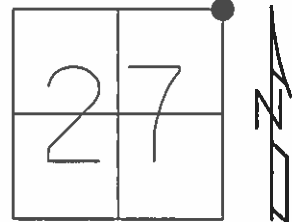
RECORD:
 FD BRASS MON
 1" DOWN
 SET SQ. HEADED
 SPIKE/WASHER
 5-18-82, HOFFMAN
 SET P.K./WASHER
 10/10/96, BVD
 FD P.K.NAIL
 REF56
 4-24-17, JLL
 SET MAG/WASHER
 10/30/17, JLL



O.D.O.T. DISTRICT 2 SURVEY OFFICE (USE ONLY)

PERSONNEL _____ REFERENCE NO. 56 SHEET 13 OF 18
 NOTES HUSS DATE 10/30/01 ROUTE US 6
 H.C. ROUSOS WEATHER PTLY CLOUDY COUNTY HENRY
 R.C. VAN DUSEN TEMP. 57° TOWNSHIP DAMASCUS
 SECTION 27
 T 5 N R 8 E

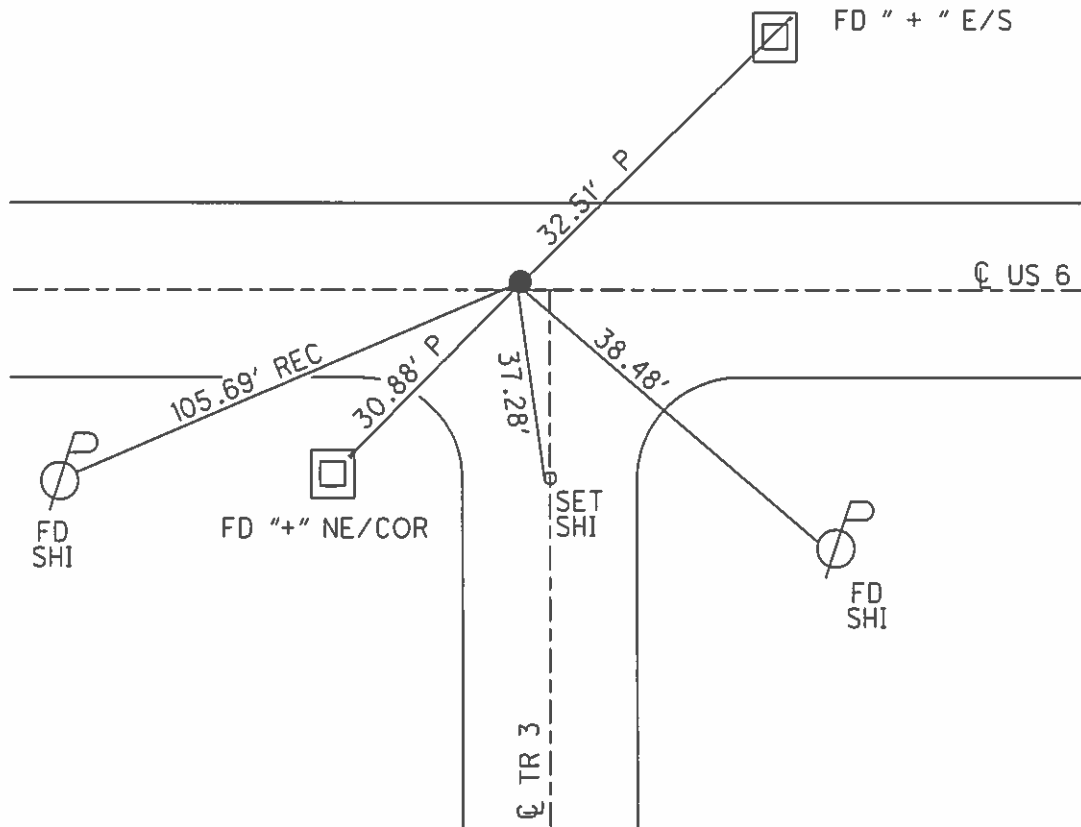
TYPE MONUMENT PK/WASHER
 ON SURFACE - ~~BELOW~~ ON
 LEFT - ☉ PAV'T - ~~RIGHT~~ 0.6'
11.6' TOLT EDGE PAVEMENT
 S.L.M. 1371+74.4



GRID: NORTHING: _____ EASTING: _____

RECORD:
 FD BRASS MON.
 1" BELOW, ON ☉
 SET SQ. HEADED
 SPIKE/WASHER
 5-18-82, HOFFMAN

SET P.K./WASHER
 10/10/96, BVD



O.D.O.T. DISTRICT 2 SURVEY OFFICE

PERSONNEL _____

REFERENCE NO. 56

SHEET 1 OF 5

NOTES Huss

H.C. Rouses

R.C. Van Dusen

DATE 10-30-01

WEATHER Cloudy

TEMP. 57°

ROUTE US 6

COUNTY Henry

TOWNSHIP Damascus

SECTION 27

T 5 N R 8 E

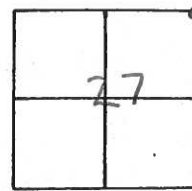
TYPE MONUMENT PK Nail & Washer

ON SURFACE - BELOW Yes

LEFT-~~PAV'T.~~ - ~~RIGHT~~ 0.6'

11.6 TO LT EDGE PAVEMENT

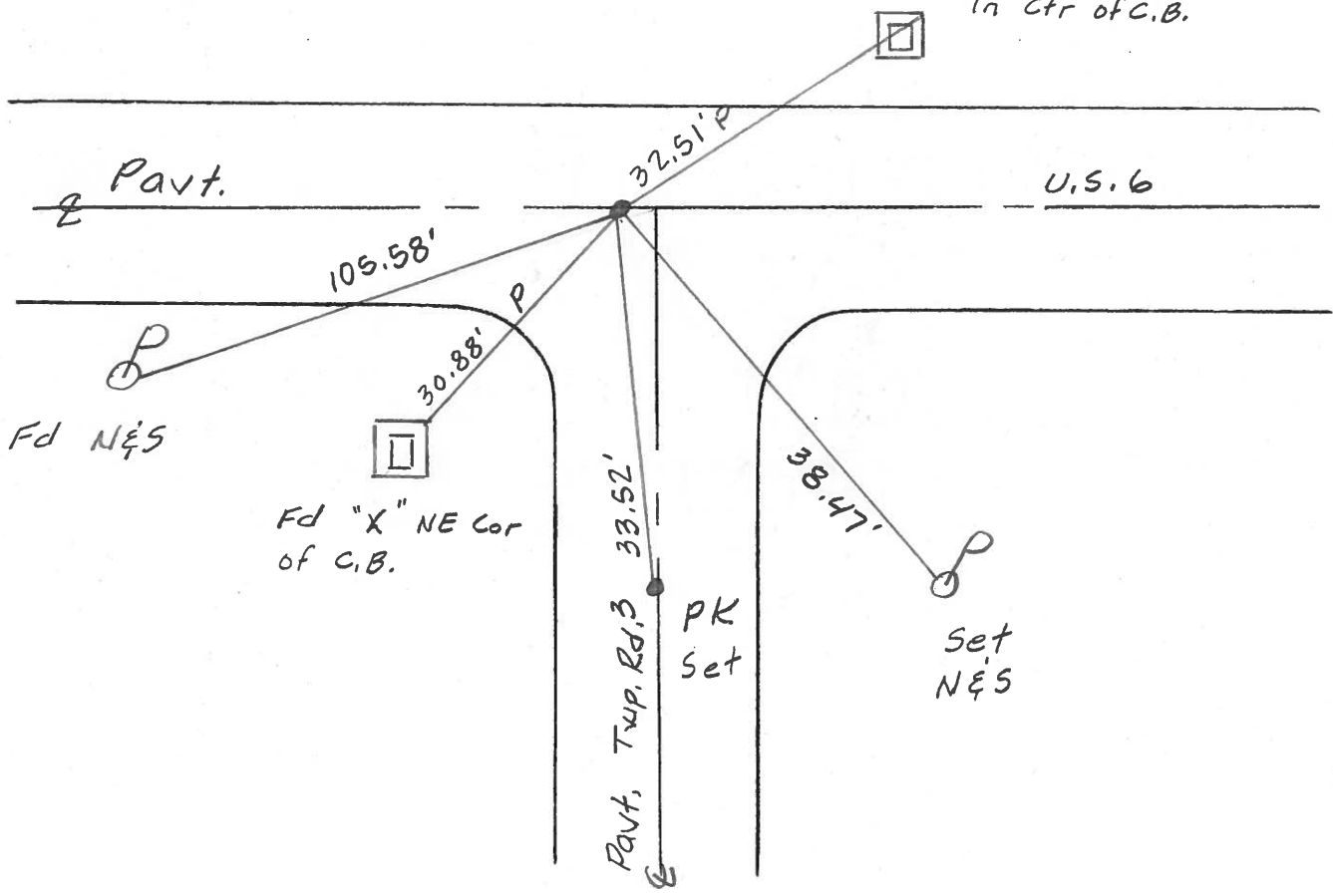
S.L.M. 1370+64



Record:
 Found Brass Mon 1 1/4" Below Surface
 @ & U.S. 6 Set "□" Head Spike &
 Washer 5-18-82
 Hoffman & Crew

Set PK & Washer
 6-26-02
 DCH

Fd "X" East Side
 In Ctr of C.B.



Resurveyed 2001

O.D.O.T. DISTRICT 2 SURVEY OFFICE

PERSONNEL

REFERENCE NO. 56

SHEET 2 OF 6

NOTES S. HUSS

H.C. B. VANOUSEN

DATE 6-13-95

ROUTE U.S. 6

R.C. T. ROUSOS

WEATHER SUNNY

COUNTY HENRY

TEMP. +74°F

TOWNSHIP DAMASCUS

SECTION 27

T 5 N R 8 E

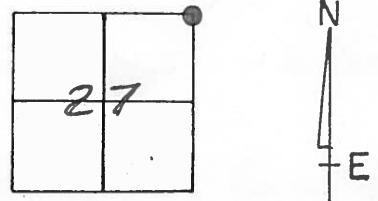
TYPE MONUMENT PK NAIL & WASHER

ON SURFACE - BELOW YES

LEFT - PAV'T. - RIGHT 0.6' LT.

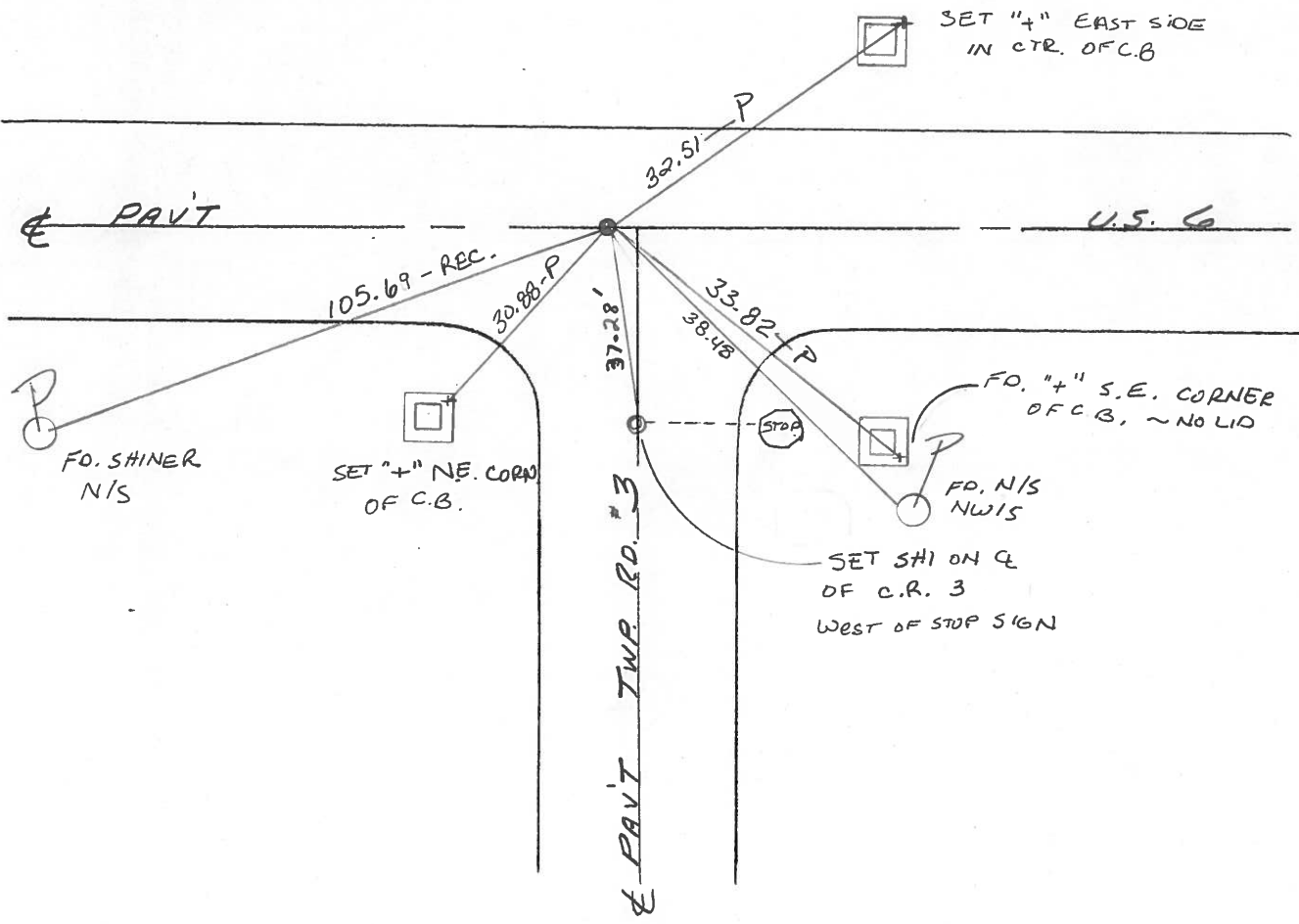
11.6' TO LT EDGE PAVEMENT

S.L.M. 1370 +64



RECORD:
 FOUND BRASS MON. $1\frac{1}{4}$ " BELOW SURFACE
 @ E PAV'T. U.S. 6
 SET 1" HEAD SPK. & WASHER
 5-18-82
 HOFFMAN
 CREW

SET PK/WASHER
 10-10-96
 B.V.D.



QD.O.T. DISTRICT 2 SURVEY OFFICE

SHEET _____ OF _____

County HENRY S.R. 4.5.6

Date 11-18-81

Township DAMASCUS

Weather clear

Section 27

Temp. + 45°

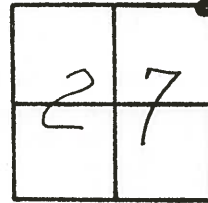
T5N, R8E

Personnel HOFFMAN

Householder

LOETRKE

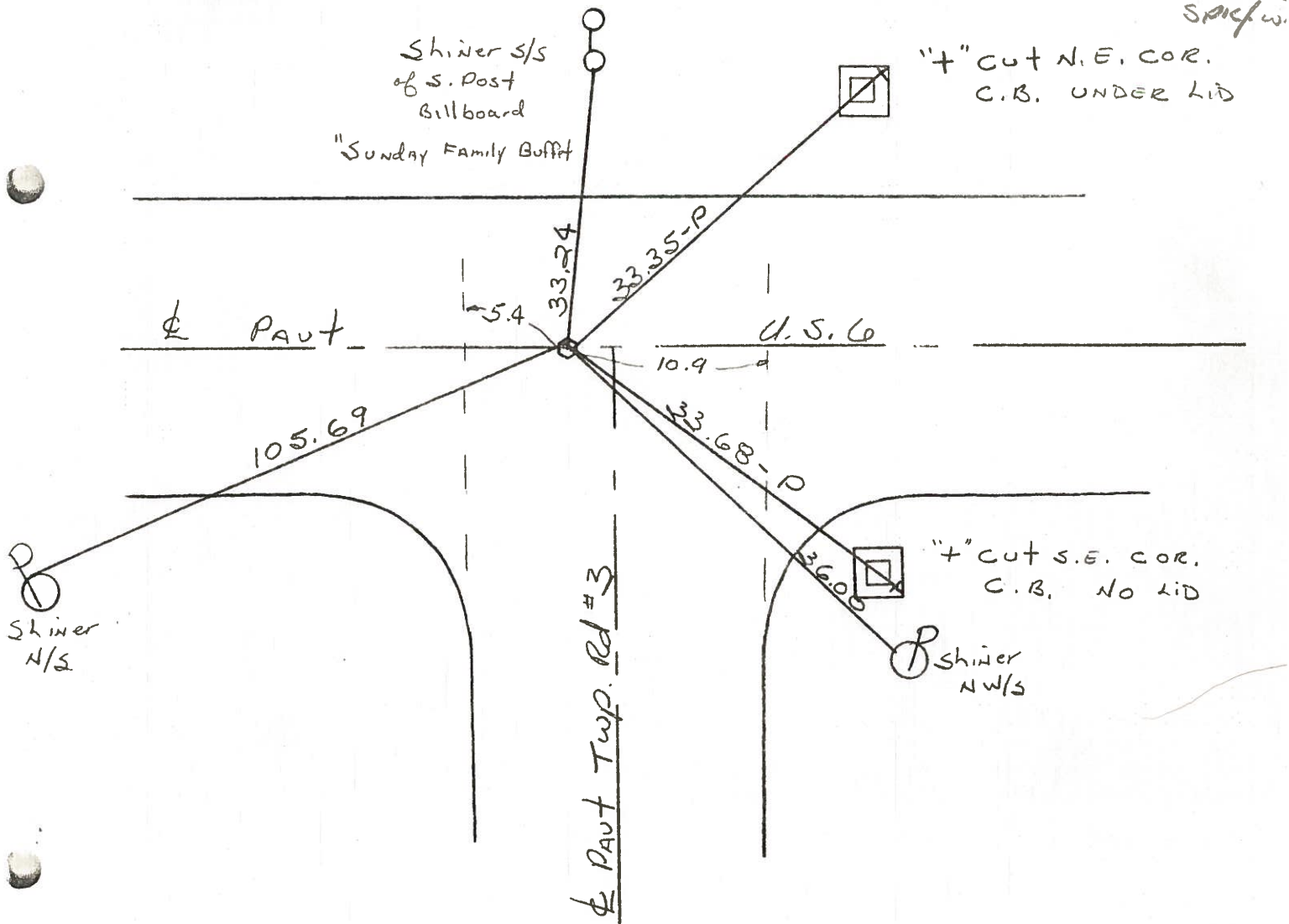
56



d. Brass mon. 1 1/4" Below Surface
© & PAUT U.S.G

Project STA ± 1245 + 73

Set ~~small C.B. spk.~~ Hit
5-18-82 SWH mon.
Set 2"
"□" HENRY
SPK w.



John Harding - Twp Trustee

QD.O.T. DISTRICT 2 SURVEY OFFICE

SHEET _____ OF _____

County HENRY S.R. 4.5.6

Date 11-18-81

Township DAMASCUS

Weather clear

Section 27

Temp. + 45°

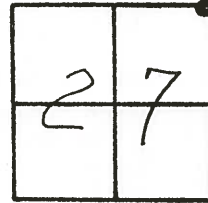
T5N, R8E

Personnel HOFFMAN

Householder

LOETRKE

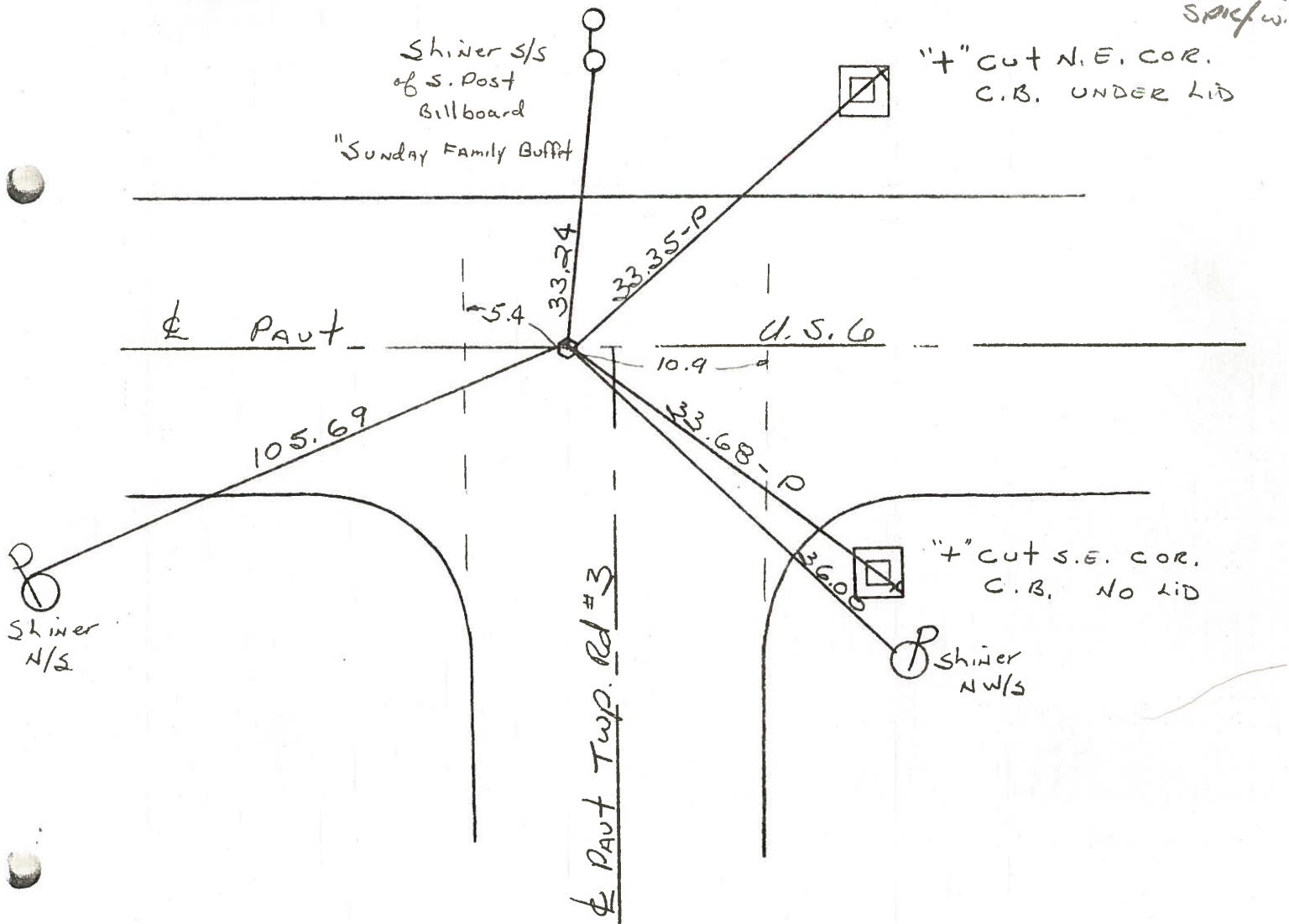
56



id. Brass mon. 1 1/4" Below Surface
© & PAUT U.S.G

Project STA ± 1245 + 73

Set ~~small C.B. spk.~~ Hit
5-18-82 SWH mon.
Set 2"
"□" HENRY
SPK w.



John Harding - Twp Trustee

PERSONNEL	TITLE	PERSONNEL	TITLE
BURNSIDE			
R. SHAW	E.I.T.		

COUNTY HENRY DATE 6-1-71
 S. R. U.S. #6 WEATHER Cloudy
 SEC. _____ TEMP. +70°

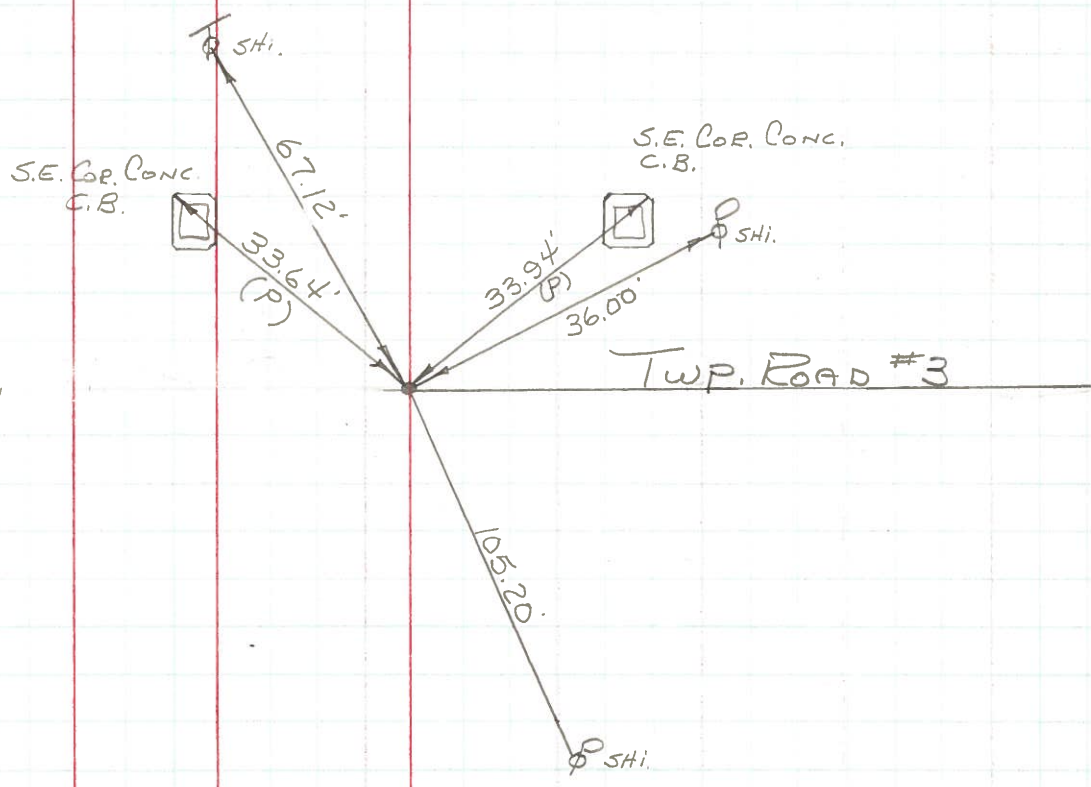
DESCRIPTION _____ LEFT _____ CENTER LINE _____ RIGHT _____ JOB NO. _____

56



NE. COR. SEC. 27
 DAMASCUS TWP.
 BRASS MON.
 @ SURFACE

K
9-72



Personnel

Title

Date

County

HENRY

Sheet No.

2

Weather

S. R. No. U.S. # 6

Section

Job No. 02111

Corner Stones Cont

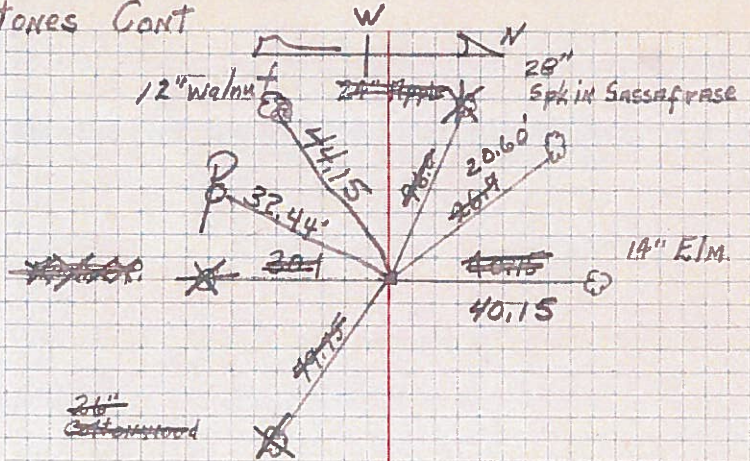
Chain Dist. From
U.S. # 6 & 65

57

Set Mobara Mon.
1/2 Sec. Between 23 & 26

1282 + 64.94

225'
Walnut
to E

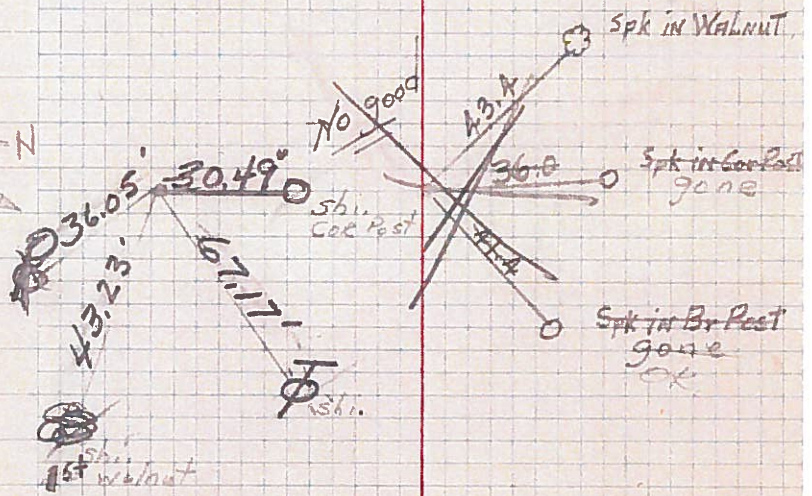


N.E. Cor. Sec 27
P.K. Nail.

Set Mobara Mon.
8/20/54

1256 + 15.88

56



8/20/54
Found Stone - Set Mobara Mon

1/2 Sec Between 22 & 27
(found Stone 2/19/52)

Ed. Nail
6/9/54

1229 + 73.15

55

