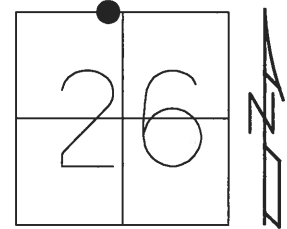


**O.D.O.T. DISTRICT 2 SURVEY OFFICE (USE ONLY)**

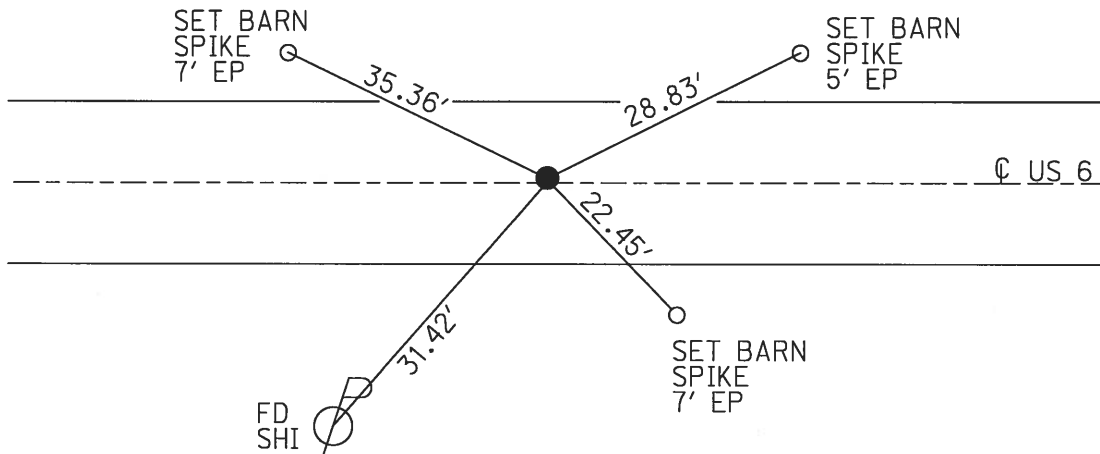
PERSONNEL \_\_\_\_\_ REFERENCE NO. 57 SHEET 20 OF 24  
 NOTES RHOADES DATE 4/24/17 ROUTE US 6  
 H.C. LEU WEATHER SUNNY COUNTY HENRY  
 R.C. HELDMAN TEMP. 44° TOWNSHIP DAMASCUS  
 SECTION 26  
 T 5 N R 8 E

TYPE MONUMENT P.K./WASHER  
 ON SURFACE - ~~BELOW~~ ON \_\_\_\_\_  
~~LEFT~~ - ☉ PAV'T - ~~RIGHT~~ ON \_\_\_\_\_  
12.4' TO LT EDGE PAVEMENT  
 S.L.M. 1395+10.94



GRID: NORTHING: 624276.5485 EASTING: 1580841.701

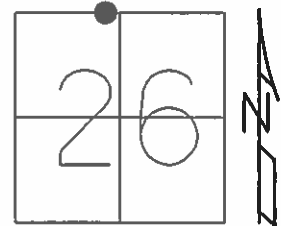
RECORD:  
 FD BRASS MON  
 1" BELOW  
 SET SQ. HEAD  
 SPIKE/WASHER  
 5-18-82, HOFFMAN  
 SET PK/WASHER  
 10-10-96, BVD  
 FD P.K  
 REF57  
 4-24-17, JLL  
 SET MAG/WASHER  
 10/30/17, JLL



**O.D.O.T. DISTRICT 2 SURVEY OFFICE (USE ONLY)**

PERSONNEL \_\_\_\_\_ REFERENCE NO. 57 SHEET 14 OF 18  
 NOTES HUSS DATE 10/30/01 ROUTE US 6  
 H.C. ROUSOS WEATHER CLOUDY COUNTY HENRY  
 R.C. VANDUSEN TEMP. 57° TOWNSHIP DAMASCUS  
 SECTION 26  
 T 5 N R 8 E

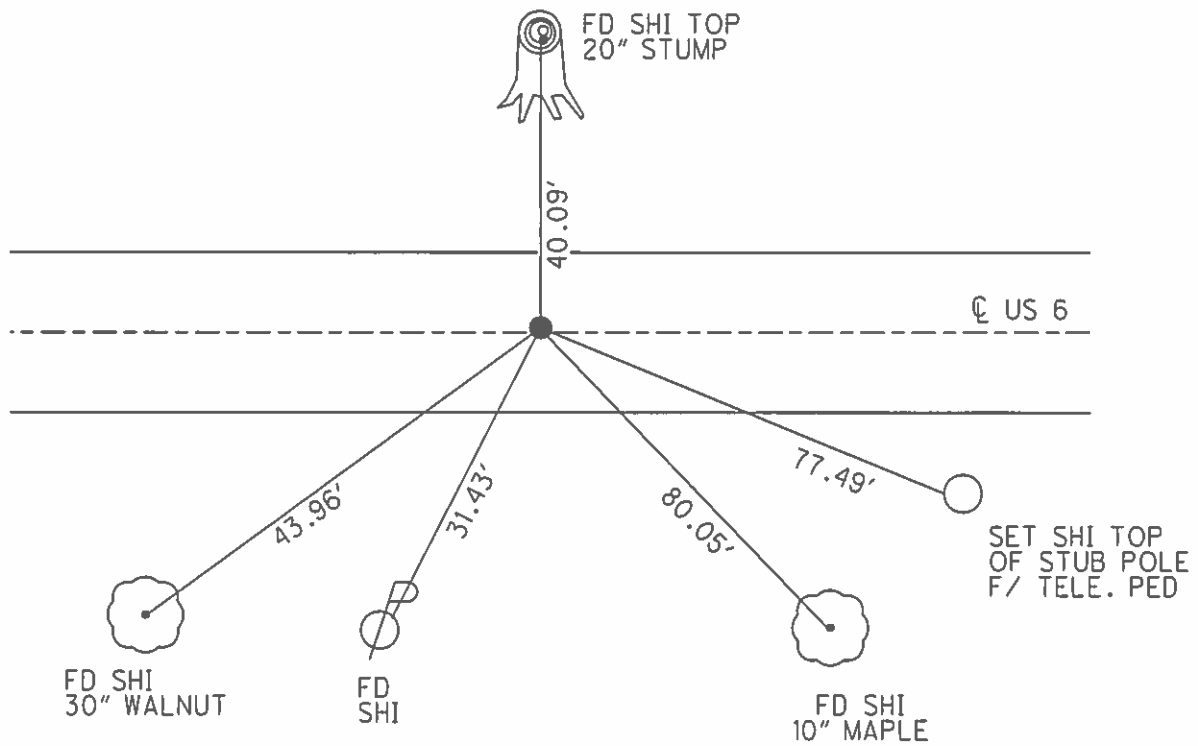
TYPE MONUMENT PK/WASHER  
 ON SURFACE - ~~BELOW~~ ON  
 LEFT - ☉ PAV'T - RIGHT ON  
12.4' TOLT EDGE PAVEMENT  
 S.L.M. 1394+16



GRID: NORTHING: \_\_\_\_\_ EASTING: \_\_\_\_\_

RECORD: FOUND BRASS MON. 1 "  
 BELOW SURFACE @ ☉ PAVT RESET "□"  
 HEAD SPK & WASHER 5-18-82 S.HOFFMAN

SET PK/WASHER  
 10-10-96 BVD



O.D.O.T. DISTRICT 2 SURVEY OFFICE

PERSONNEL \_\_\_\_\_

REFERENCE NO. 57

SHEET 2 OF 5

NOTES SAH

H.C. TR

R.C. BVD

DATE 10-30-01

WEATHER Cldy, COOL

TEMP. 57°

ROUTE US 6

COUNTY HENRY

TOWNSHIP DAMASCUS

SECTION 26

T5 NR 8 E

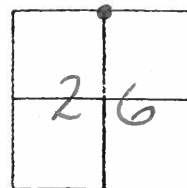
TYPE MONUMENT PK NAIL & WASHER

ON SURFACE - BELOW YES

LEFT- & PAV'T. - RIGHT YES

12.4 TO LT EDGE PAVEMENT

S.L.M. 1397+6

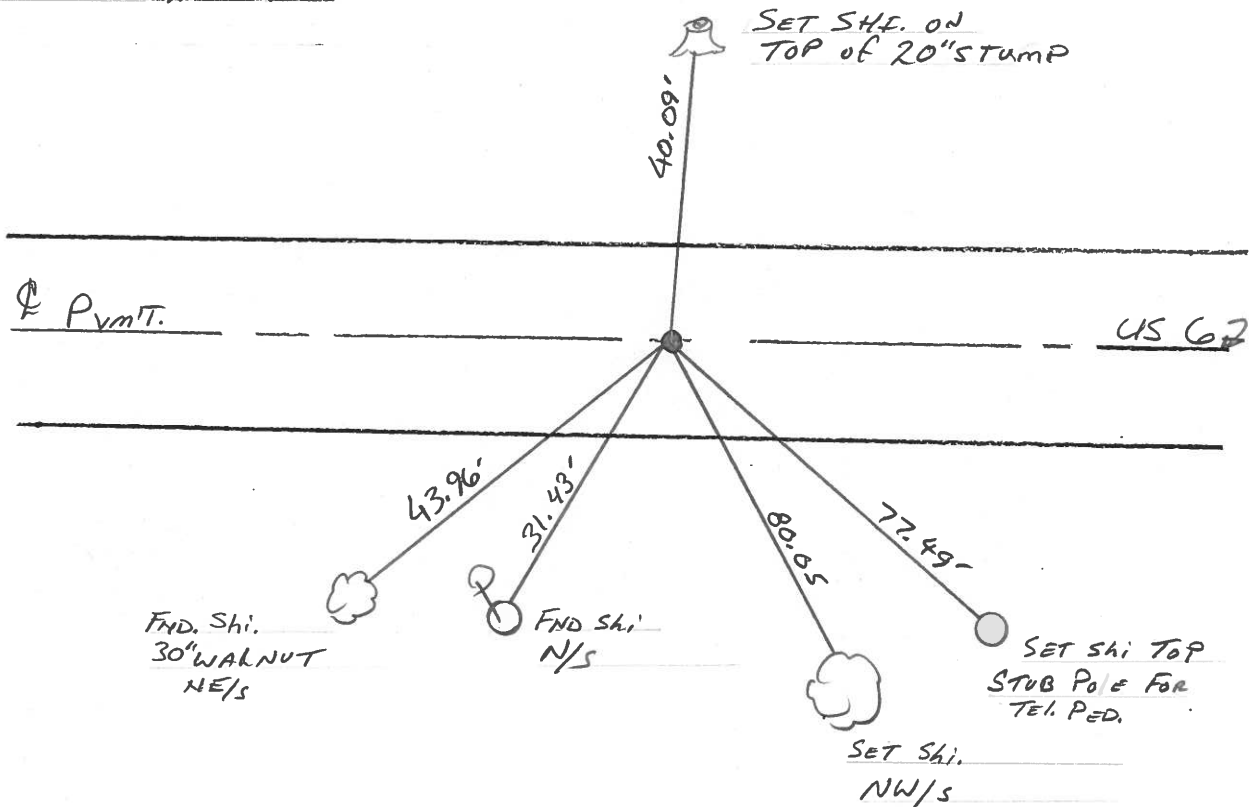


RECORD

FOUND BRASS MON. 1 1/4" BELOW SURFACE @ E PAV'T.

RESET 'D' HEAD SPIKE & WASHER 5-18-82 HOFFMAN & CREW

(SET PK & WASHER 6-26-02 DH)



# O.D.O.T. DISTRICT 2 SURVEY OFFICE

PERSONNEL

REFERENCE NO. 57

SHEET 3 OF 6

NOTES S. HUSS

H.C. B. VAN DUSEN

R.C. T. ROUSOS

DATE 6-13-95

WEATHER Sunny

TEMP. +74°F

ROUTE US 6

COUNTY HENRY

TOWNSHIP DAMASCUS

SECTION 26

T. 5 N. R 8 E.

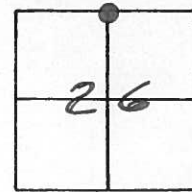
TYPE MONUMENT PK NAIL & WASHER

ON SURFACE - BELOW YES

~~LEFT~~ - PAV'T. - RIGHT YES

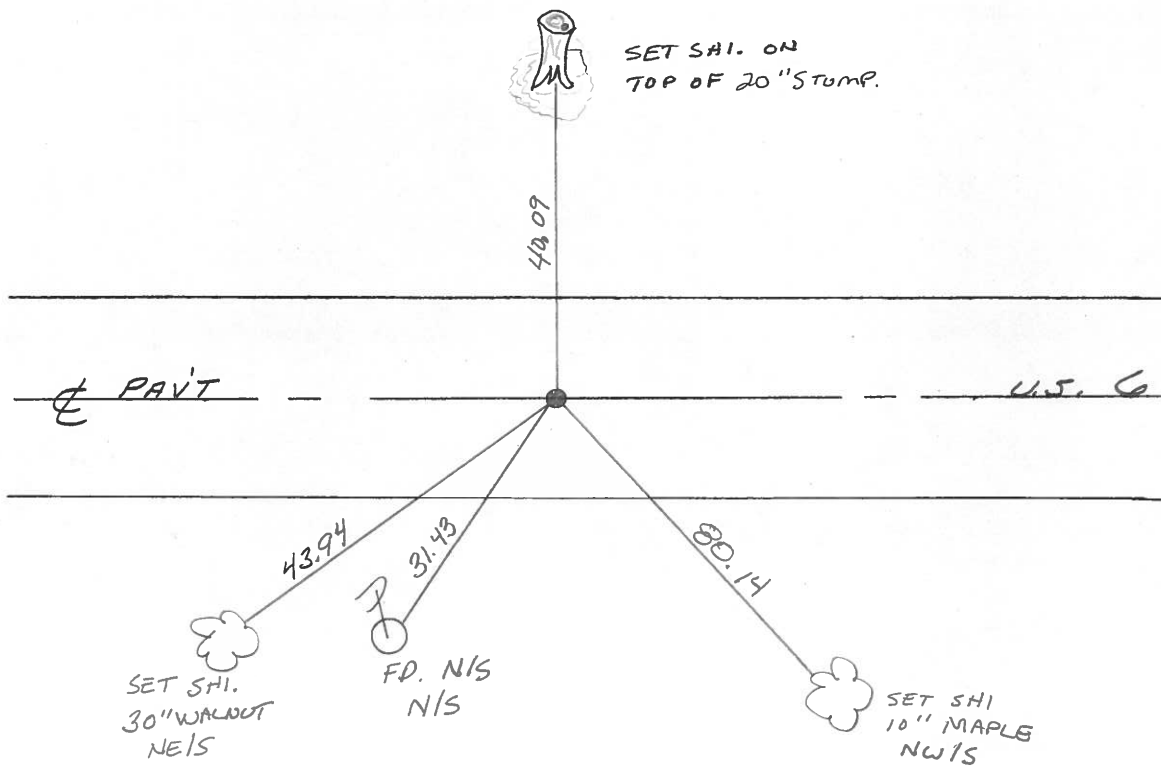
12.4' TO LT EDGE PAVEMENT

S.L.M. 1397 +10



RECORD: FOUND BRASS MON.  $1\frac{1}{4}$ " BELOW SURFACE @ E PAV'T.  
RE-SET "I" HEAD SPK. & WASHER  
5-18-82  
HOFFMAN  
&  
CREW

SET PK/WASHER  
10-10-96  
B.V.D.



QD.O.T. DISTRICT 2 SURVEY OFFICE

SHEET \_\_\_\_\_ OF \_\_\_\_\_

County HENRY S.R. 4-5-6

Township DAMASCUS

Section 26

T5N, R8E

Personnel HOFFMAN

HOUSEHOLDER

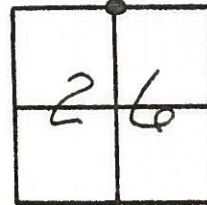
Loehrke

# 57

Date 11-18-81

Weather clear

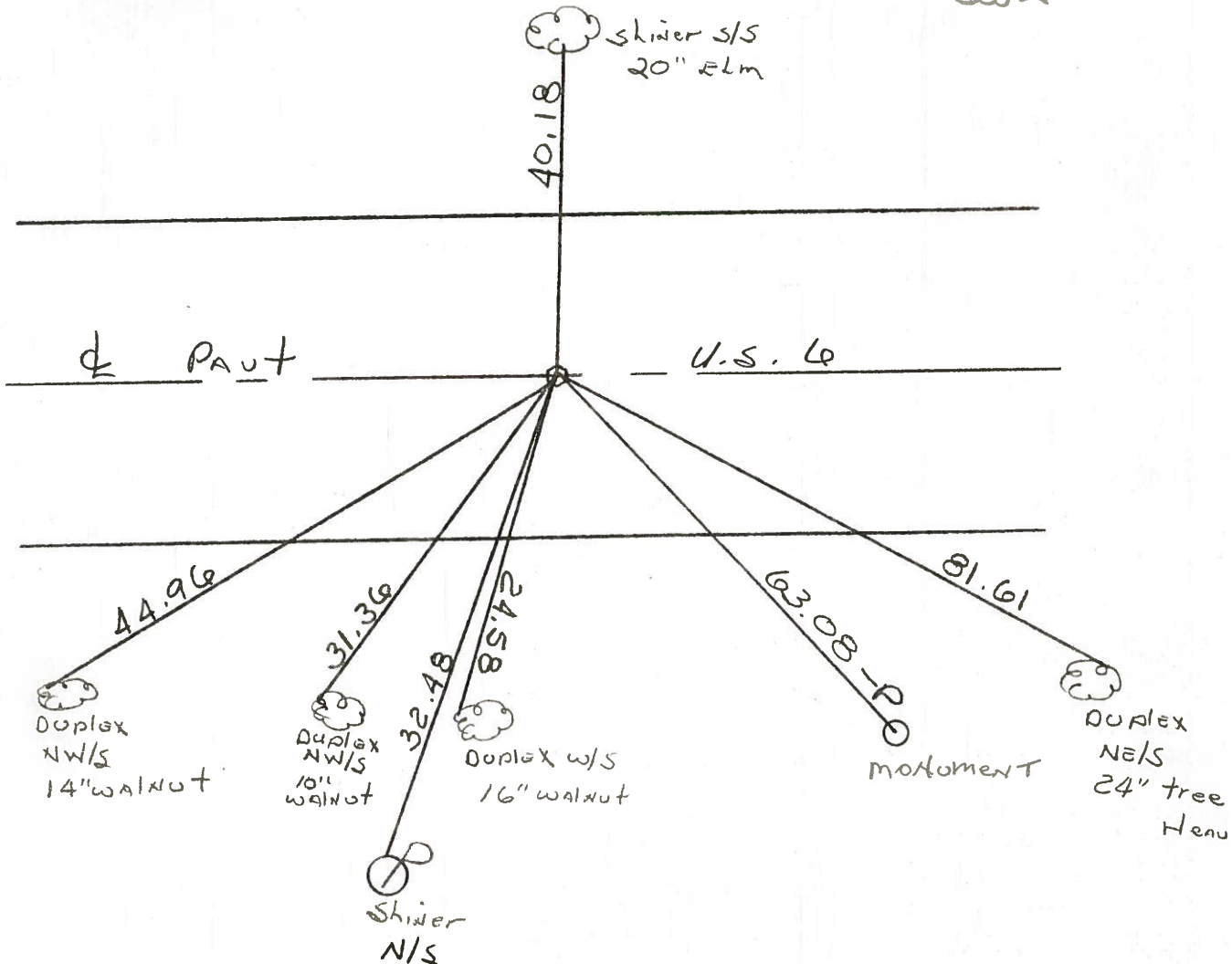
Temp. +45°



Fd. BRASS MON 1 1/4" Below Surface  
@ & of PAUT.

Project STA ± 1272+22

Set 2" "D" Head spike/washer  
5-18-82  
SWA



O.D.O.T. DISTRICT 2 SURVEY OFFICE

SHEET \_\_\_\_\_ OF \_\_\_\_\_

County HENRY S.R. U.S. 6

Date 11-18-81

Township DAMASCUS

Weather clear

Section 26

Temp. +45°

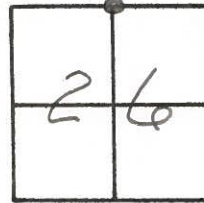
T5N, R8E

Personnel HOFFMAN

HOUSEHOLDER

Loehrke

# 57



Fd. BRASS MON 1 1/4" Below Surface @  $\pm$  of PAUT.

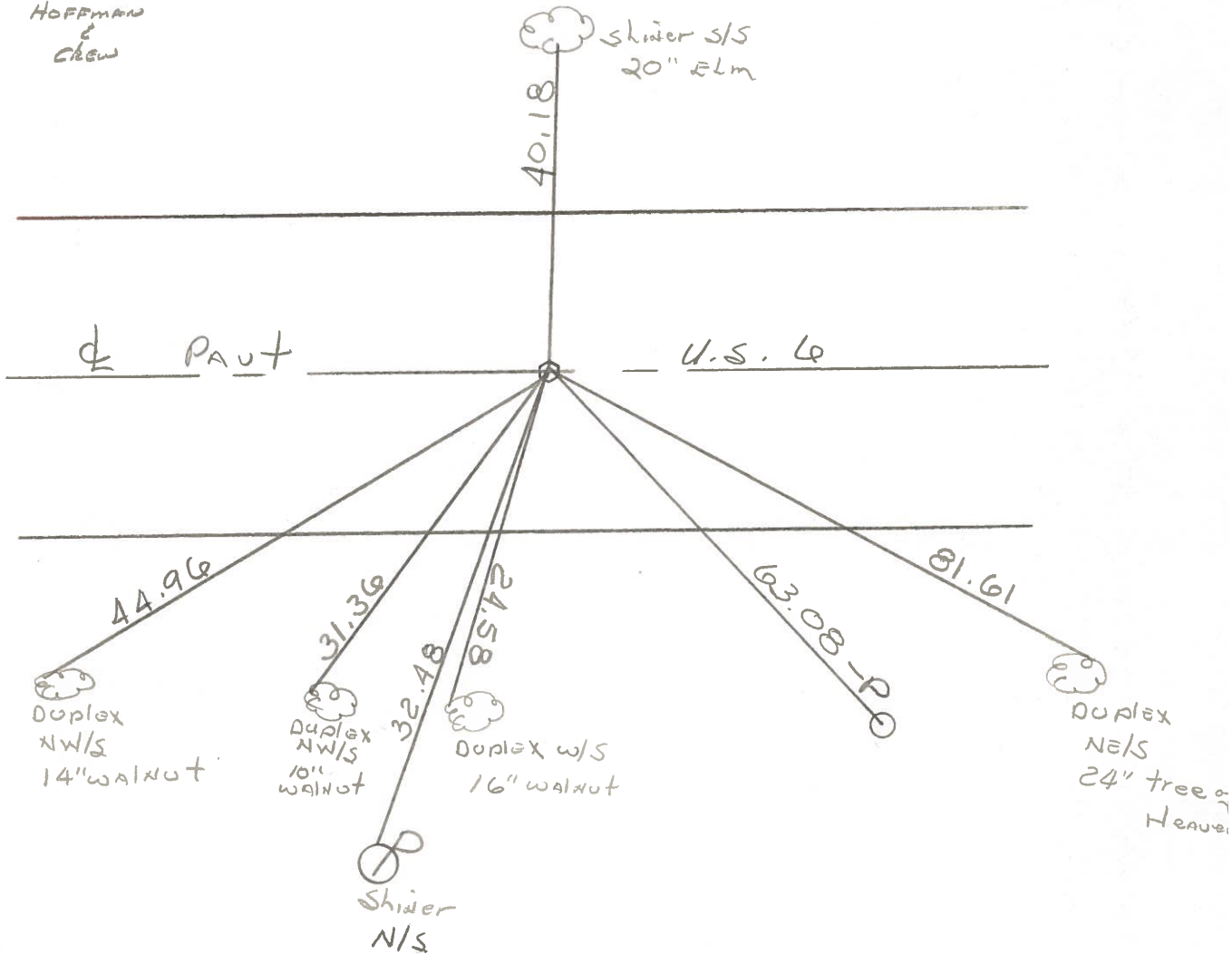
Project STA  $\pm$

1272+22

RE-SET "O" HEAD SPR. & WASHER

5-18-82

HOFFMAN & CREW



PERSONNEL TITLE PERSONNEL TITLE

BURNSIDE  
SHAW

E.I.T.

COUNTY HENRY

DATE 6-1-71

S. R. U.S. 6

WEATHER Cloudy

SEC.

TEMP. +72°

DESCRIPTION

LEFT

CENTER LINE

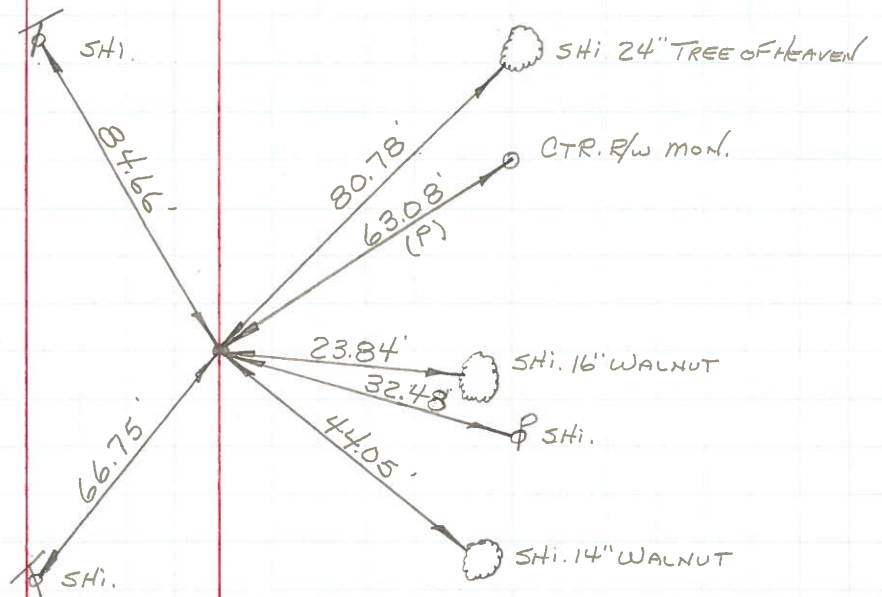
RIGHT

JOB NO.

57



N 1/4 COR. SEC. 26  
 DAMASCUS TWP.  
 BRASS MON.  
 @ SURFACE



K  
-10-72



Personnel Title

Date \_\_\_\_\_ County HENRY Sheet No. 2

Weather \_\_\_\_\_ S. R. No. U.S. # 6 Section \_\_\_\_\_ Job No. 02111

Corner Stones Cont

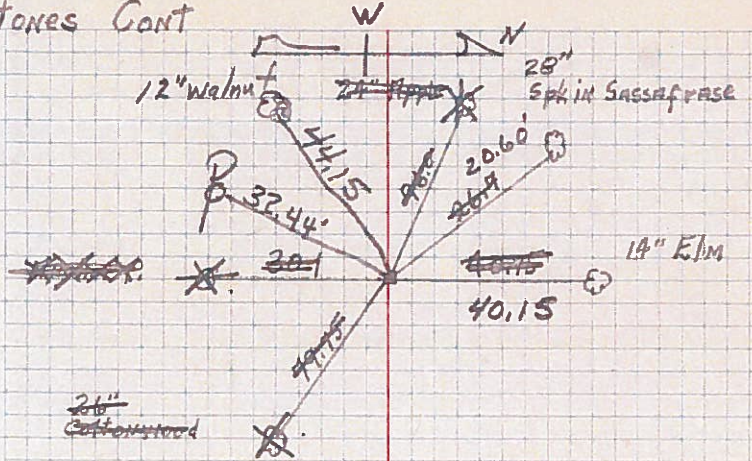
Chain Dist. From  
U.S. # 6 & 65

57

Set Mobara Mon.  
1/2 Sec. Between 23 & 26

1282 + 64.94

22 1/2  
walnuts  
to E



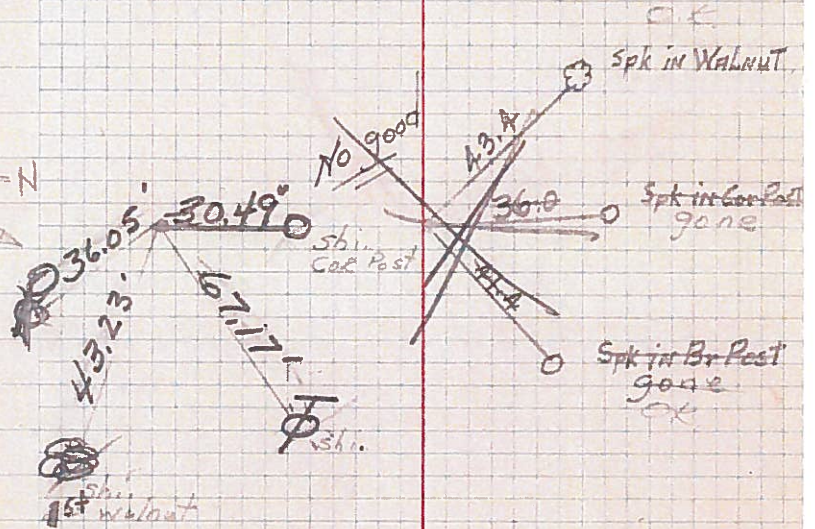
N.E. Cor. Sec 27  
P.K. Nail.

Set Mobara Mon.  
8/20/54

1256 + 15.88

56

19 1/2  
walnuts  
to E



8/20/54  
Found Stone - Set Mobara Mon

1/2 Sec Between 22 & 27  
(found Stone 2/19/52.)

Fd. Nail  
6/9/54

1229 + 73.15

55

