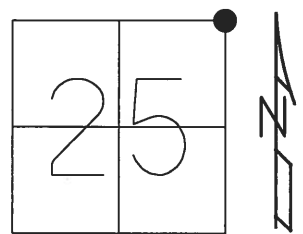


**O.D.O.T. DISTRICT 2 SURVEY OFFICE (USE ONLY)**

PERSONNEL \_\_\_\_\_ REFERENCE NO. 60 SHEET 23 OF 24

NOTES HUSS DATE 10/30/01 ROUTE US 6  
 H.C. ROUSOS WEATHER CLOUDY COUNTY HENRY  
 R.C. VAN DUSEN TEMP. 57° TOWNSHIP DAMASCUS  
 \_\_\_\_\_ SECTION 25  
 \_\_\_\_\_ T 5 N R 8 R

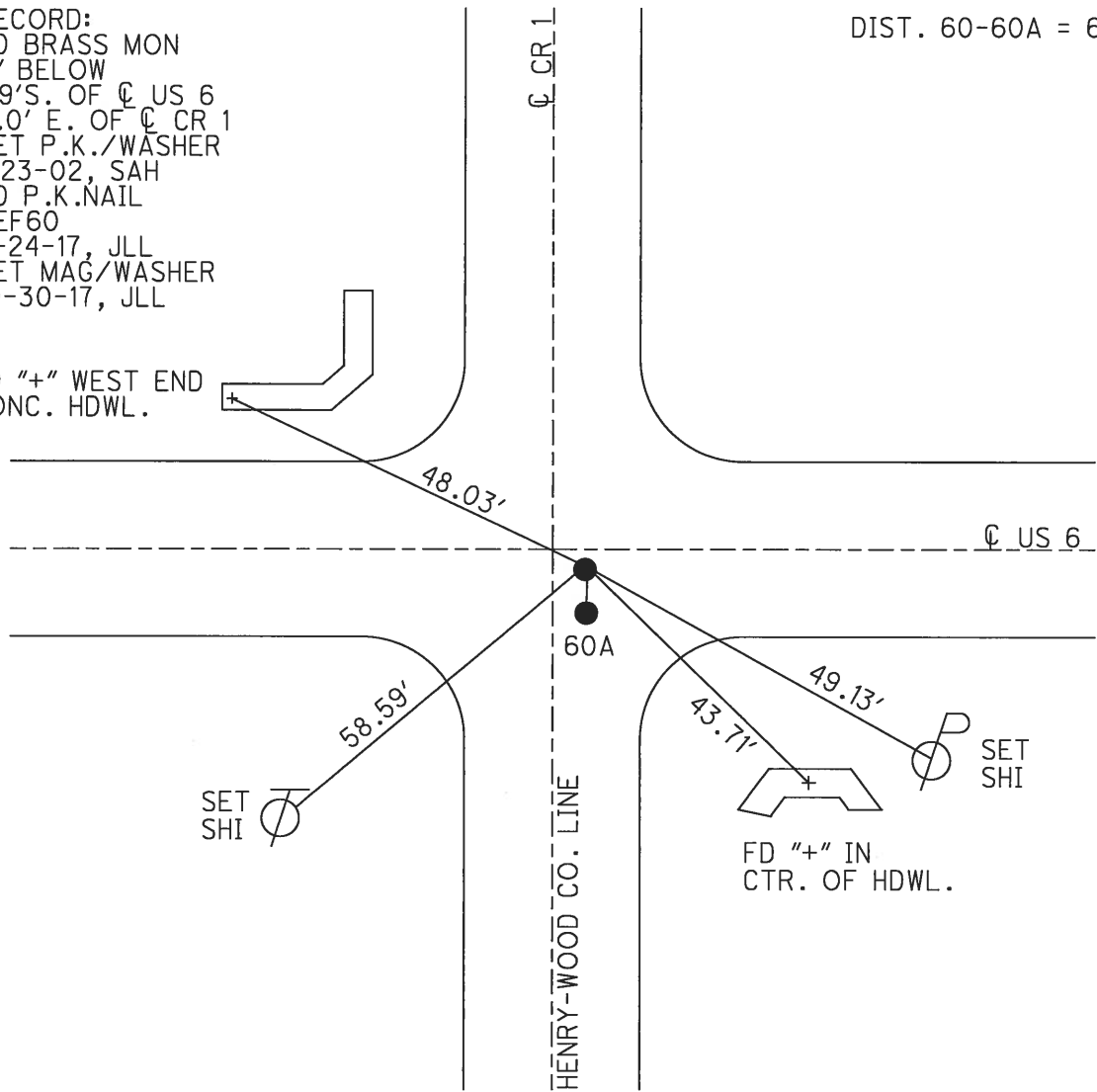
TYPE MONUMENT PK/WASHER  
 ON SURFACE - ~~BELOW~~ ON  
~~LEFT~~ - CL PAV'T - RIGHT 2'  
9.6' TO RT EDGE PAVEMENT  
 S.L.M. 1474+93.24  
 GRID: NORTHING: 624190.0343 EASTING: 1588823.504



RECORD:  
 FD BRASS MON  
 3" BELOW  
 1.9'S. OF CL US 6  
 5.0' E. OF CL CR 1  
 SET P.K./WASHER  
 1-23-02, SAH  
 FD P.K.NAIL  
 REF60  
 4-24-17, JLL  
 SET MAG/WASHER  
 10-30-17, JLL

DIST. 60-60A = 6.02'

FD "+" WEST END  
 CONC. HDWL.

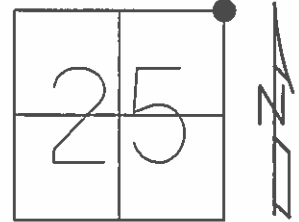


O.D.O.T. DISTRICT 2 SURVEY OFFICE (USE ONLY)

PERSONNEL \_\_\_\_\_ REFERENCE NO. 60 SHEET 17 OF 18

NOTES HUSS DATE 10/30/01 ROUTE US 6  
 H.C. ROUSOS WEATHER CLOUDY COUNTY HENRY  
 R.C. VANDUSEN TEMP. 57° TOWNSHIP DAMASCUS  
 SECTION 25  
 T 5 N R 8 R

TYPE MONUMENT PK/WASHER  
 ON SURFACE - ~~BELOW~~ ON  
~~LEFT~~ - Q PAV'T - RIGHT 2'  
9.6' TO RT EDGE PAVEMENT  
 S.L.M. 1477+87.2

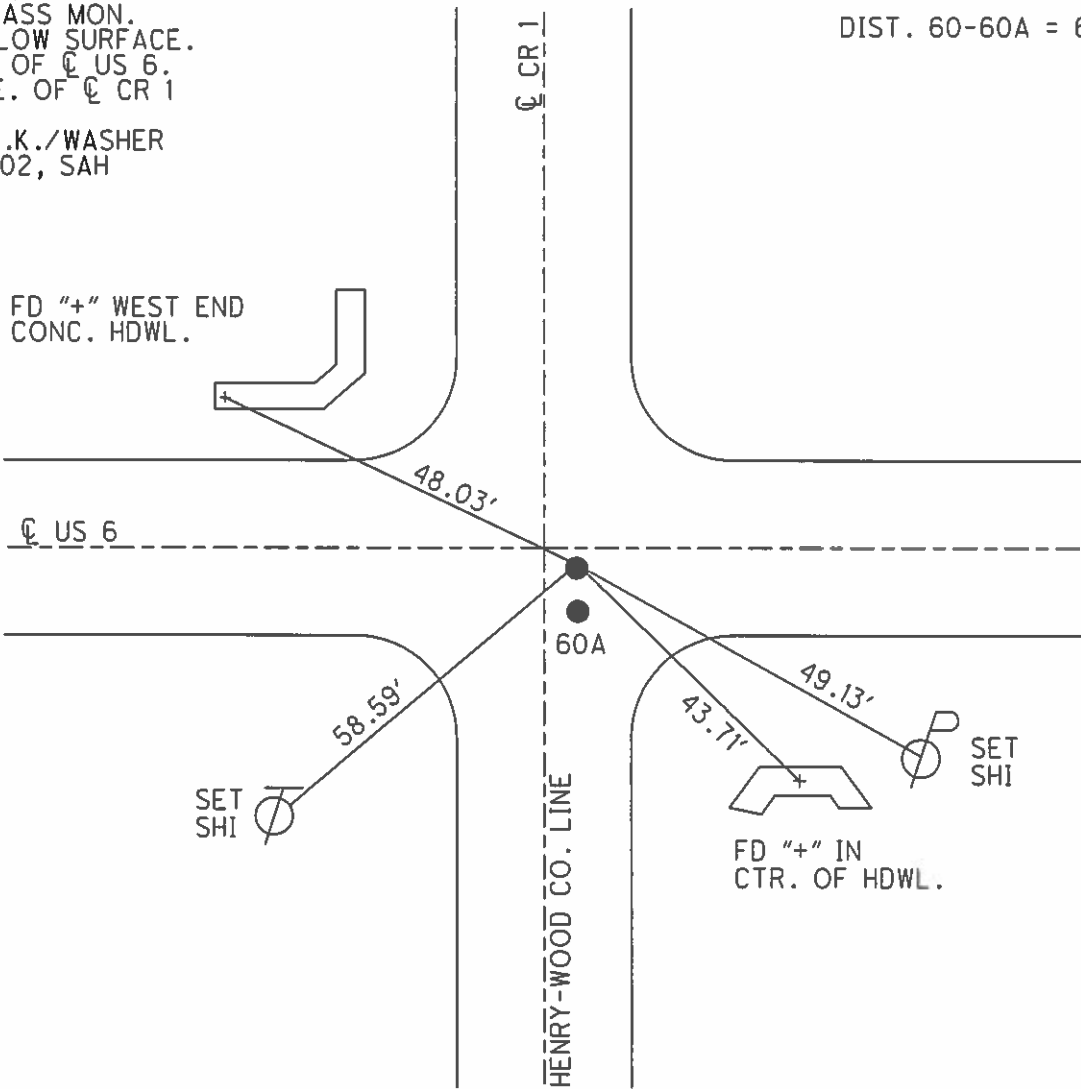


GRID: NORTHING: \_\_\_\_\_ EASTING: \_\_\_\_\_

RECORD:  
 FD BRASS MON.  
 3" BELOW SURFACE.  
 1.9'S. OF Q US 6.  
 5.0' E. OF Q CR 1

SET P.K./WASHER  
 1/23/02, SAH

DIST. 60-60A = 6.02'



FD "+\" WEST END  
 CONC. HDWL.

SET SHI

SET SHI

FD "+\" IN  
 CTR. OF HDWL.

HENRY-WOOD CO. LINE

O.D.O.T. DISTRICT 2 SURVEY OFFICE

1 of 12

PERSONNEL

REFERENCE NO. 60

SHEET 17 OF 17

NOTES Huss

DATE 10-30-01

ROUTE US 6

H.C. Reuss

WEATHER Cloudy

COUNTY HENRY

R.C. VanDusen

TEMP. 57°

TOWNSHIP DAMASCUS

SECTION 25

T 5 N R 8 R

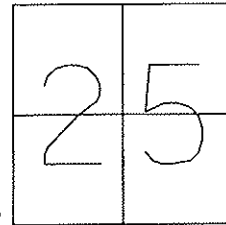
TYPE MONUMENT PK & WASHER

ON SURFACE - BELOW ON SURFACE

LEFT - Q PAV'T - RIGHT 2' RT C/L US6  
9.6 TO RT EDGE PAVEMENT 5' RT C.RD1

S.L.M. 1477+08

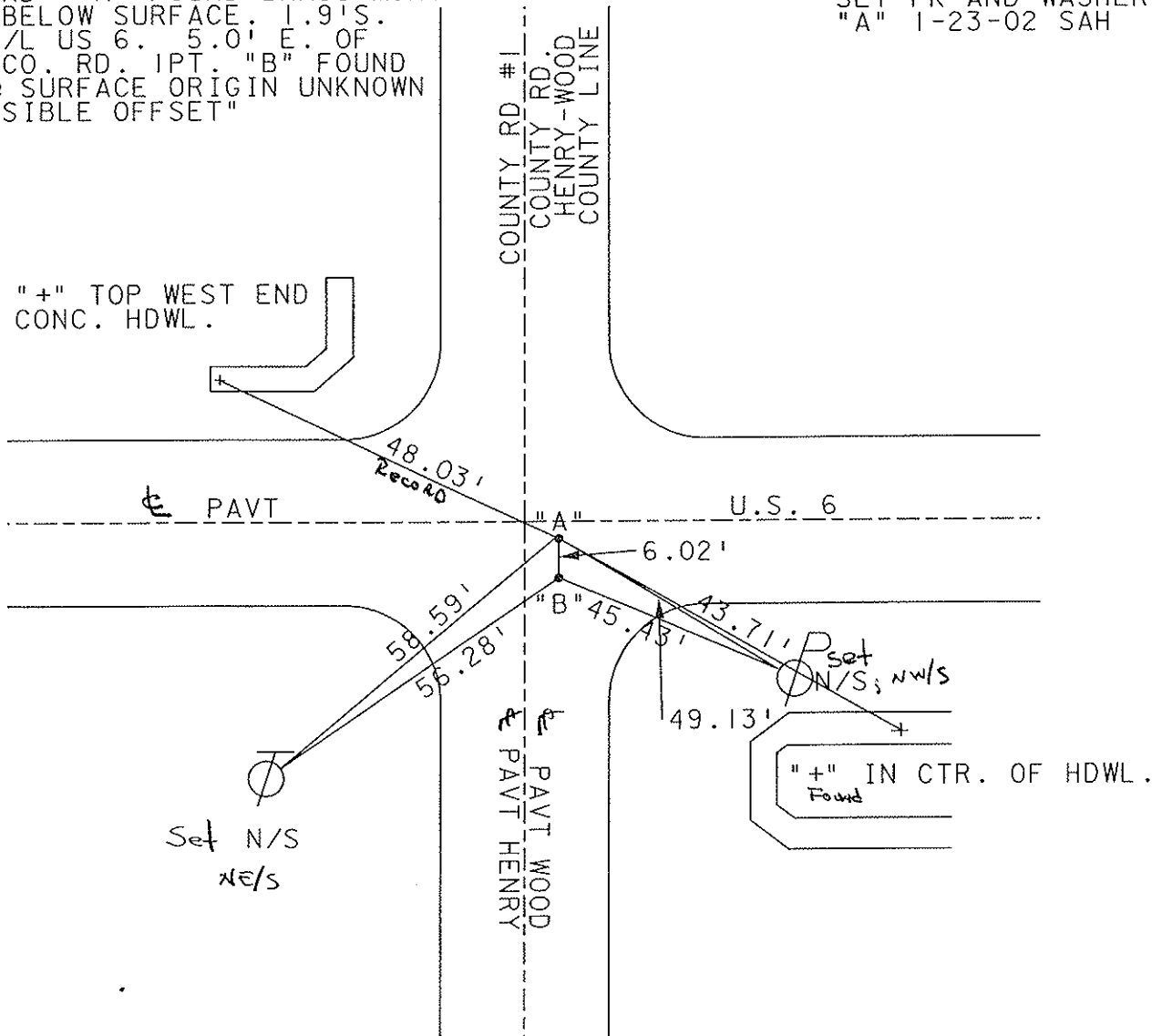
SLM = 27.99 = 1477 + 87.2 = 0.00 IN WOOD CO.



RECORD: "A"-FOUND BRASS MON.  
 3" BELOW SURFACE, 1.9' S.  
 OF C/L US 6. 5.0' E. OF  
 C/L CO. RD. IPT. "B" FOUND  
 PK @ SURFACE ORIGIN UNKNOWN  
 "POSSIBLE OFFSET"

SET PK AND WASHER  
 "A" 1-23-02 SAH

Fd. "+" TOP WEST END  
 CONC. HDWL.



# O.D.O.T. DISTRICT 2 SURVEY OFFICE

PERSONNEL

REFERENCE NO. 60

SHEET 5 OF 5

NOTES Huss

H.C. Rousos

R.C. Van Dusen

DATE 10-30-01

WEATHER Cloudy

TEMP. 57°

ROUTE U.S. 6

COUNTY Henry

TOWNSHIP Damascus

SECTION 25

T 5 N R 8 E

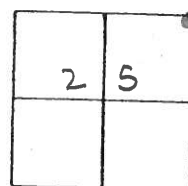
TYPE MONUMENT PK Nail & Washer

ON SURFACE - ~~BELOW~~ Yes

~~LEFT -~~ RIGHT 2.0' R+ @ US 6 ~ 5.0' R+ @ CR #1

9.6' TO R+ EDGE PAVEMENT

S.L.M. 1477+08



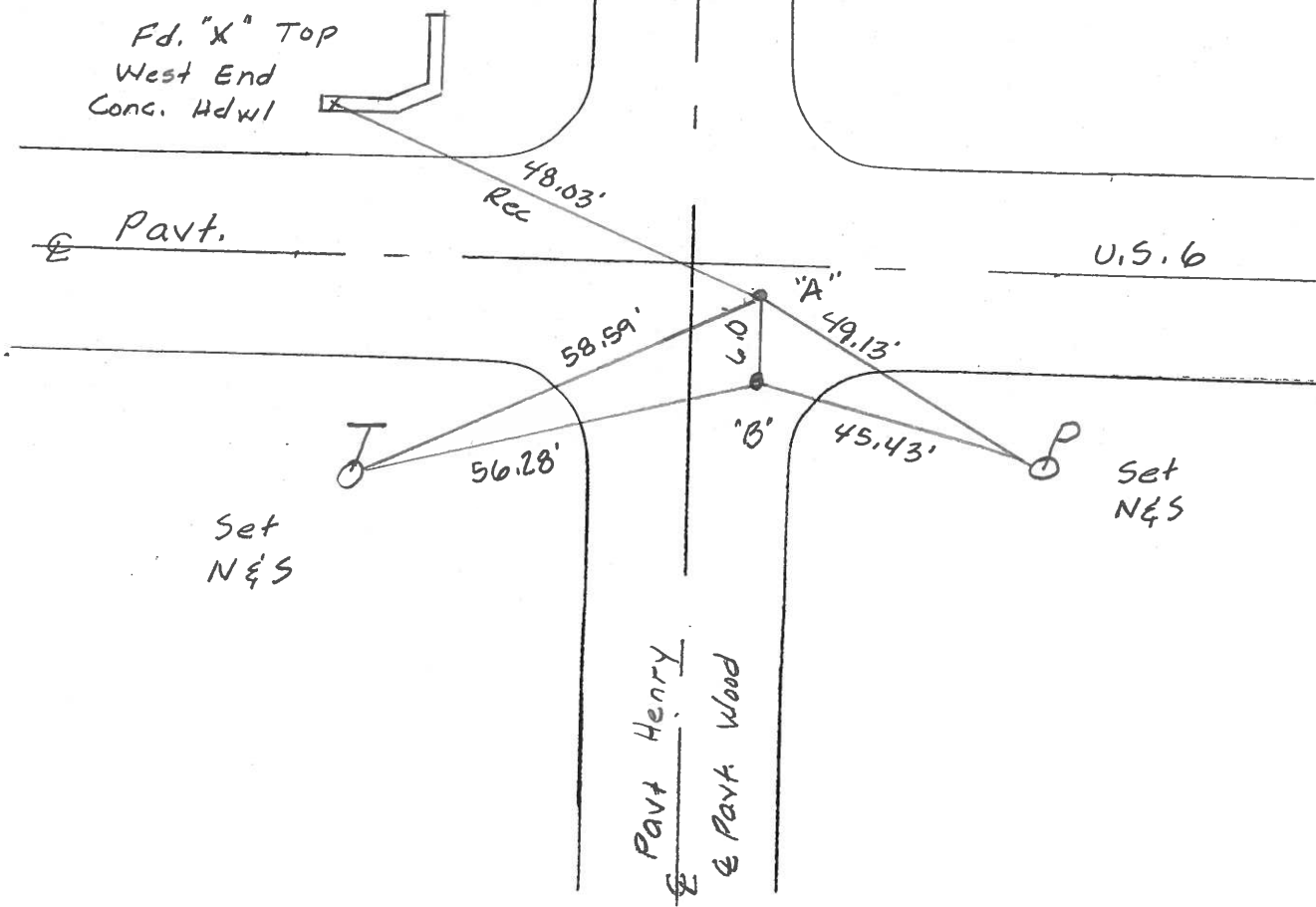
Record "A" Found Brass Mon  
 3" Below Surface  
 1.9' S of @ US 6  
 5.0' E of @ Co. Rd 1  
 Pt "B" Fd PK on Surface  
 origin Unknown  
 "Possible Offset"

Set PK & Washer  
 1-23-02  
 SAH

Fd. "X" Top  
 West End  
 Conc. Hdwl



Co. Rd #1  
 County Road  
 Henry Wood  
 County Line



O.D.O.T. DISTRICT 2 SURVEY OFFICE

PERSONNEL

REFERENCE NO. 60

SHEET 6 OF 6

NOTES S. HUSS

H.C. B. VAW DUSEN

R.C. T. ROUSOS

DATE 6-13-95

WEATHER SUNNY

TEMP. +76° F

ROUTE U.S. 6

COUNTY HENRY

TOWNSHIP DAMASCUS

SECTION 25

T 5 N R 8 E

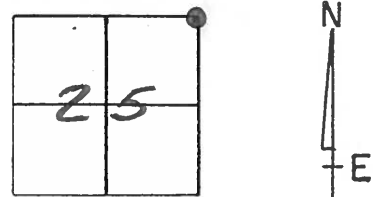
TYPE MONUMENT PK & WASHER

ON SURFACE - ~~BELOW~~ Yes

~~LEFT - C~~ PAV'T. - RIGHT 2.0' RT. CL U.S. 6 ~ 5.0' RT. C.R.D. 1

96 TO RT EDGE PAVEMENT

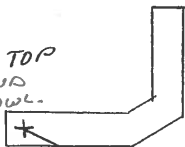
S.L.M. 1477+08



RECORD: "A" - FOUND BRASS MON.  
 3" BELOW SURFACE.  
 1.0' S. OF E U.S. 6  
 5.0' E. OF E CO. RD. 1  
 PT. "B" FD. PK @ SURFACE  
 ORIGIN UNKNOWN.  
 "POSSIBLE OFFSET"

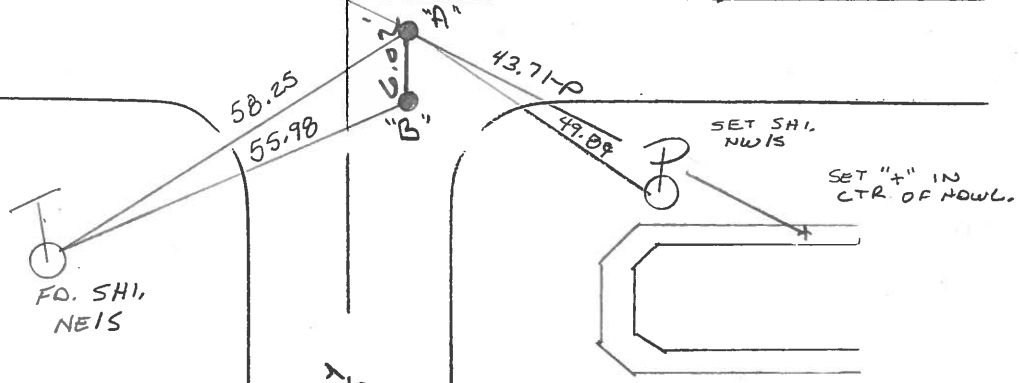
SET PK & WASHERS  
 10-10-96  
 B.V.D.

FD. "+" TOP  
 WEST END  
 CONC HOWL.



E PAV'T.

U.S. 6



FD. SHI.  
 NEIS

SET SHI.  
 NWIS

SET "+" IN  
 CTR. OF HOWL.

E PAV'T. HENRY  
E PAV'T. WOOD

O.D.O.T. DISTRICT 2 SURVEY OFFICE

SHEET \_\_\_\_\_ OF \_\_\_\_\_

County HENRY - Wood S.R. U.S. 6

Date 11-18-81

Township DAMASCUS

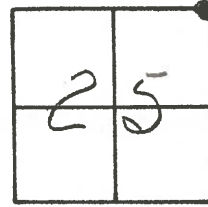
Weather clear

Section 25

Temp. +45°

T2N, R8E

Personnel HOFFMAN



#60  
Householder  
Loehrke

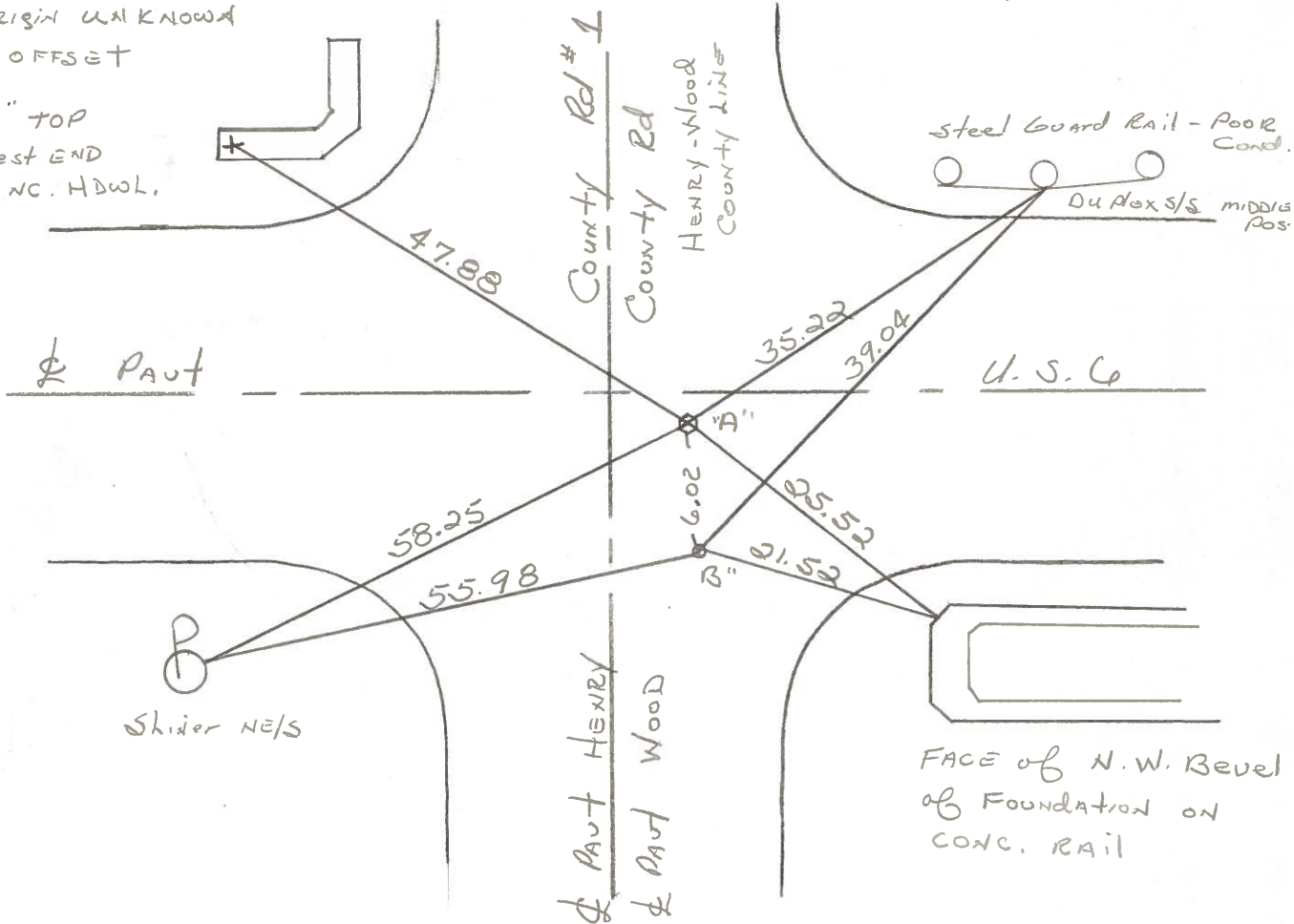
1"-Fd. BRASS mark 3" below surface  
 1.9' S. of & U.S. 6  
 5.0' E. of & Co. Rd. 1

Pt. A Project STA ± 1352 + 05

RE-SET SMALL R.E. SPIKES,  
 5-18-82  
 S.W.H.

Pt. "B" Fd. P.K. @ SURFACE  
 ORIGIN UNKNOWN  
 Possible OFFSET

"+" TOP  
 West END  
 CONC. HDWL.



Shiner N.E/S

FACE of N.W. Bevel  
 of Foundation on  
 CONC. RAIL

QDOT. DISTRICT 2 SURVEY OFFICE

SHEET \_\_\_\_\_ OF \_\_\_\_\_

County HENRY - Wood S. R. U.S. 6

Township DAMASCUS

Section 25

T2N, R8E

Personnel HOFFMAN

Householder

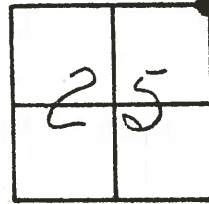
Loehrke

#60

Date 11-18-81

Weather Clear

Temp. +45°

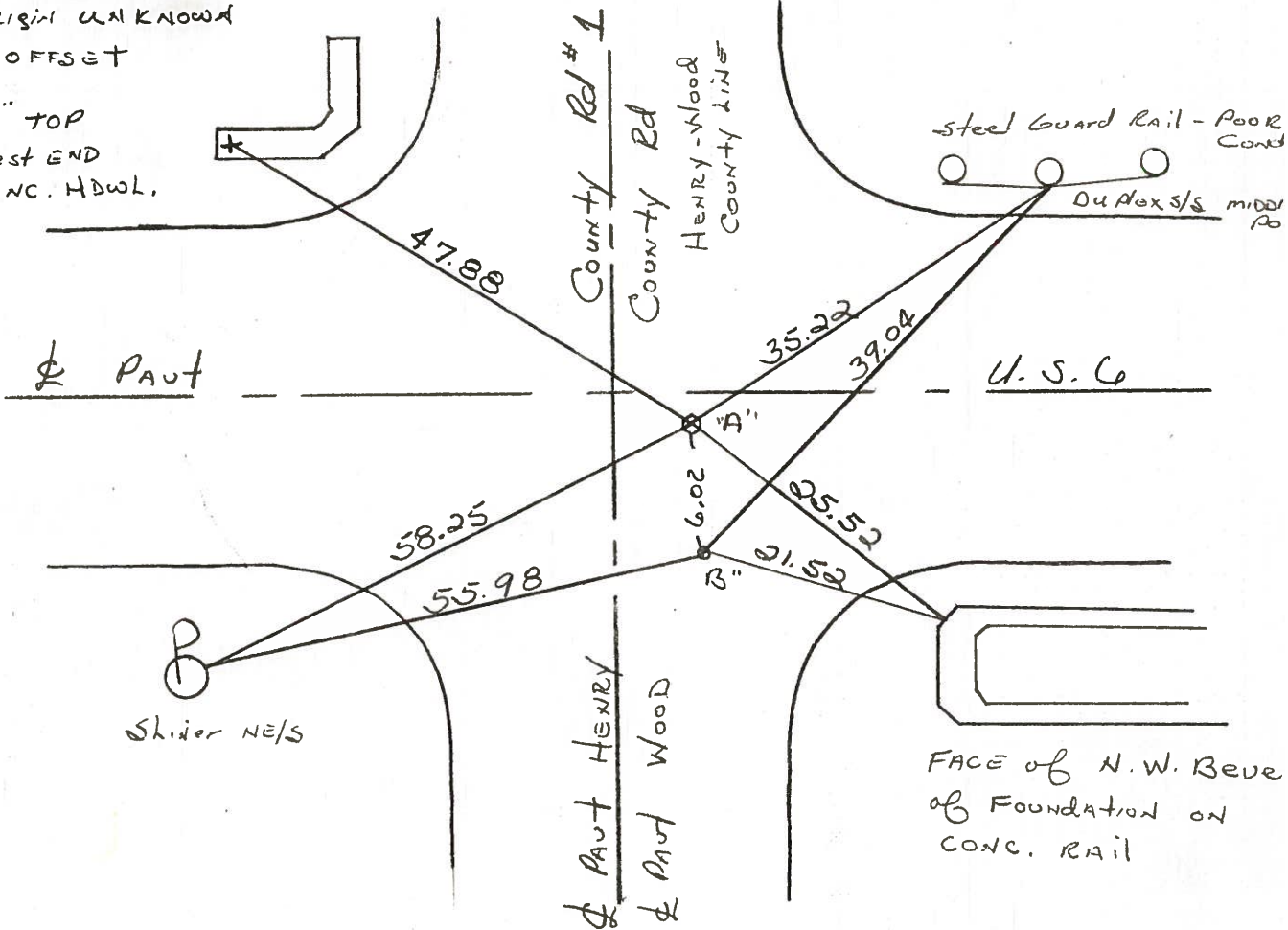


Fd. BRASS MARK 3" Below Surface  
1.9' S. of & U.S. 6  
5.0' E. of & Co. Rd. 1

Pt. A Project STA ± 1352 + 05  
Set Small R.R. spike  
5-18-82  
SWOL

"B" Fd. P.K. @ SURFACE  
ORIGINAL UNKNOWN  
Possible OFFSET

"4" TOP  
West END  
CONC. HDWL.



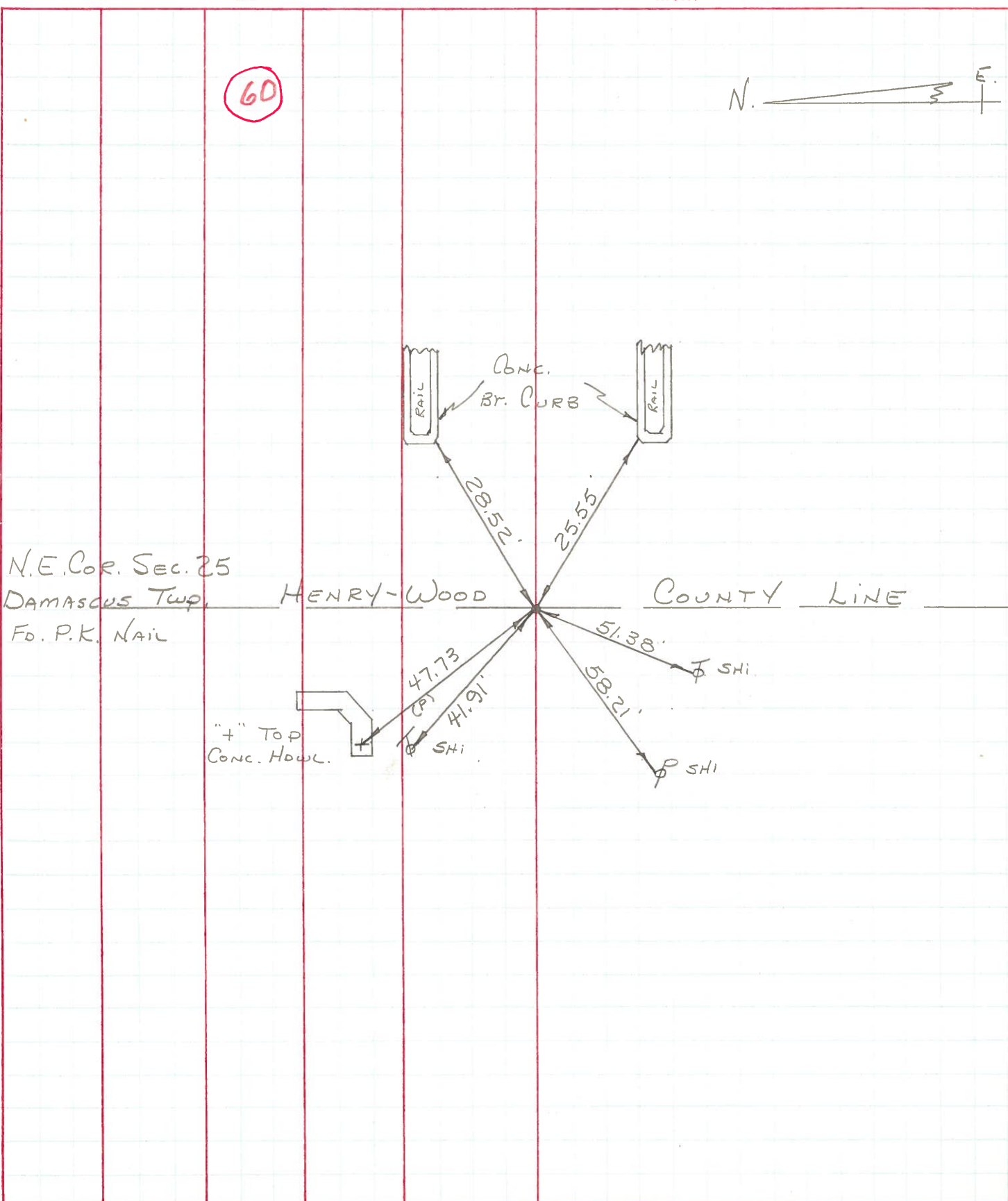
PERSONNEL	TITLE	PERSONNEL	TITLE
BURNSIDE			
SHAW	E.I.T.		

COUNTY HENRY-WOOD DATE 6-1-71

S. R. U.S. 6 WEATHER CLOUDY

SEC. Co. LINE TEMP. +72°

DESCRIPTION END POINT CHECK JOB NO. \_\_\_\_\_



9-72



Recorded in Mon. Book. 1954

Date

County

HENRY

Sheet No.

1

Weather

S. R. No. U.S. # 6

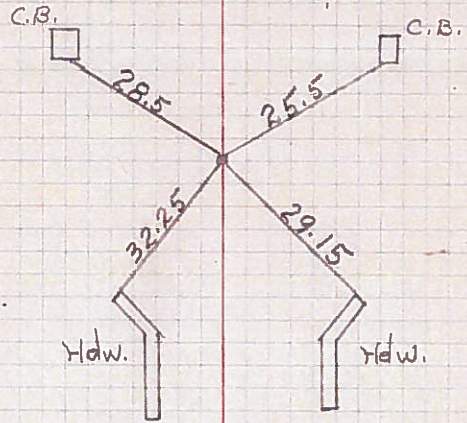
Section

Job No. 02111

CORNER STOKES DAMASCUS TWP HENRY CO U.S. # 6

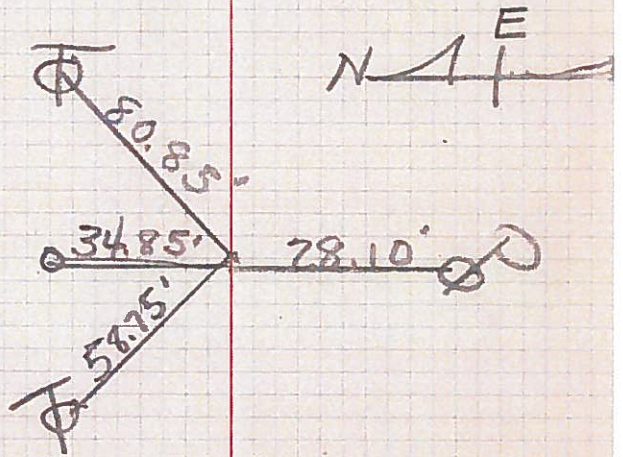
60

N.E. Cor. Sec. 25 Co. Line  
Set MOBARA Mon.  
(found 8/23/54)  
1362 + 46.23



59

1/2 Sec. Between 24 & 25  
1335 + 73.51  
Fet. Nail Set Moborg  
Mon.  
8/23/54



58

N.W. Cor. Sec. 25  
(found Stone 4/16/52)  
12" under Top of Pavement O.K.  
(Found Stone)  
9/9/54  
1309 + 12.76 8/23/54  
Found Stone - Set MOBARA Mon.

