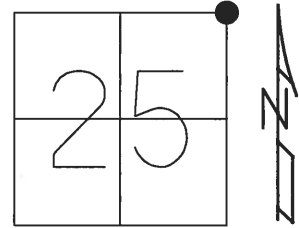


O.D.O.T. DISTRICT 2 SURVEY OFFICE (USE ONLY)

PERSONNEL _____ REFERENCE NO. 60 A SHEET 24 OF 24

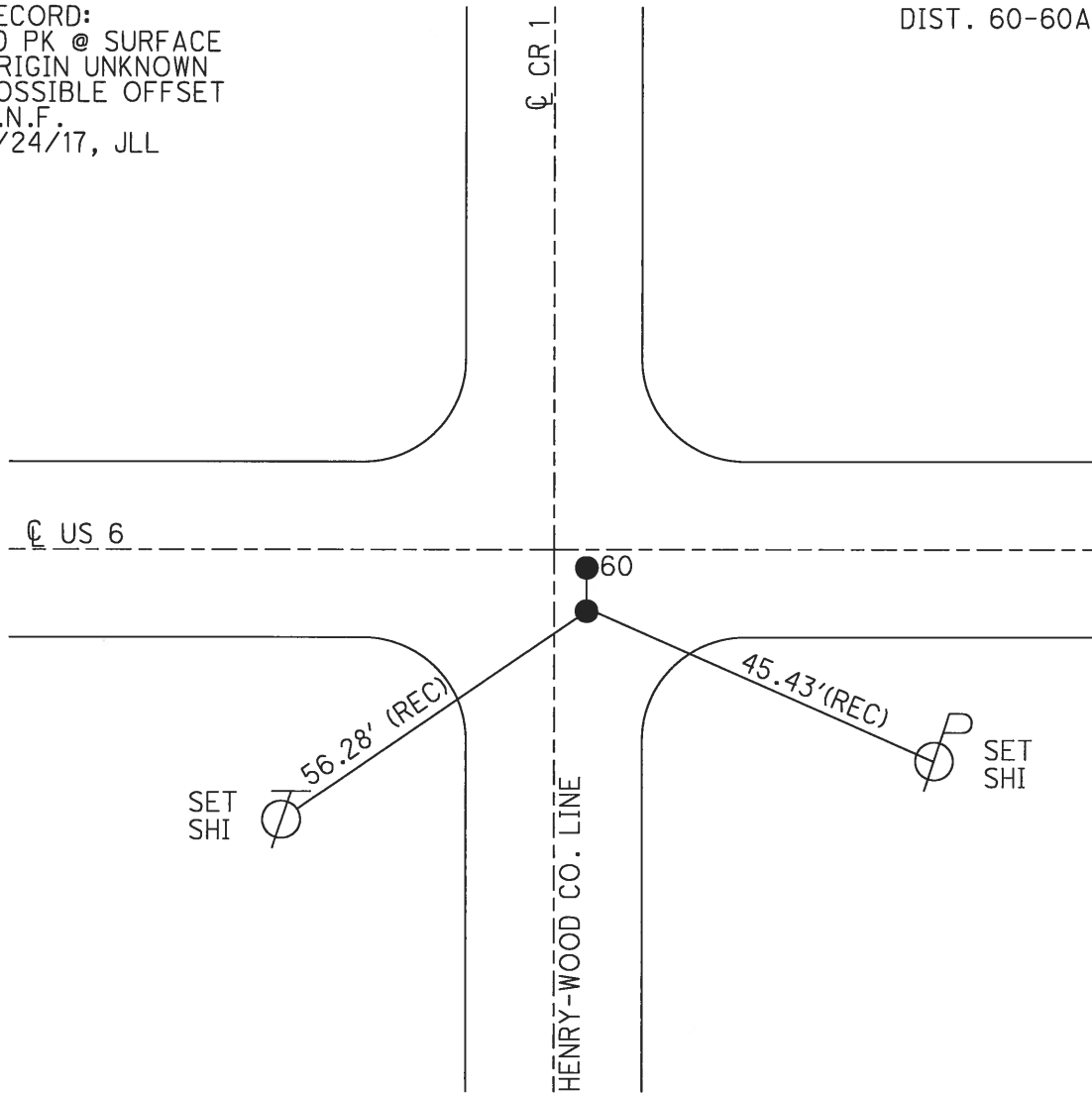
NOTES HUSS DATE 10/30/01 ROUTE US 6
 H.C. ROUSOS WEATHER CLOUDY COUNTY HENRY
 R.C. VAN DUSEN TEMP. 57° TOWNSHIP DAMASCUS
 SECTION 25
T 5 N R 8 R

TYPE MONUMENT P.K.NAIL
 ON SURFACE - ~~BELOW~~ ON _____
~~LEFT~~ - ☉ PAV'T - RIGHT 8'
 - TO - EDGE PAVEMENT
 S.L.M. 1474+93
 GRID: NORTHING: _____ EASTING: _____



RECORD:
 FD PK @ SURFACE
 ORIGIN UNKNOWN
 POSSIBLE OFFSET
 D.N.F.
 4/24/17, JLL

DIST. 60-60A = 6.02'



O.D.O.T. DISTRICT 2 SURVEY OFFICE (USE ONLY)

PERSONNEL _____ REFERENCE NO. 60 A SHEET 18 OF 18

NOTES HUSS DATE 10/30/01 ROUTE US 6
 H.C. ROUSOS WEATHER CLOUDY COUNTY HENRY
 R.C. VANDUSEN TEMP. 57° TOWNSHIP DAMASCUS
 SECTION 25
 T 5 N R 8 R

TYPE MONUMENT P.K.NAIL

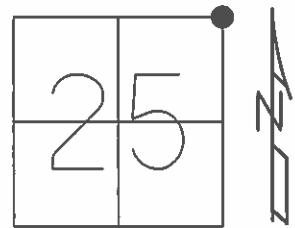
ON SURFACE - ~~BELOW~~ ON

~~LEFT~~ - Q PAV'T - RIGHT 8'

- TO - EDGE PAVEMENT

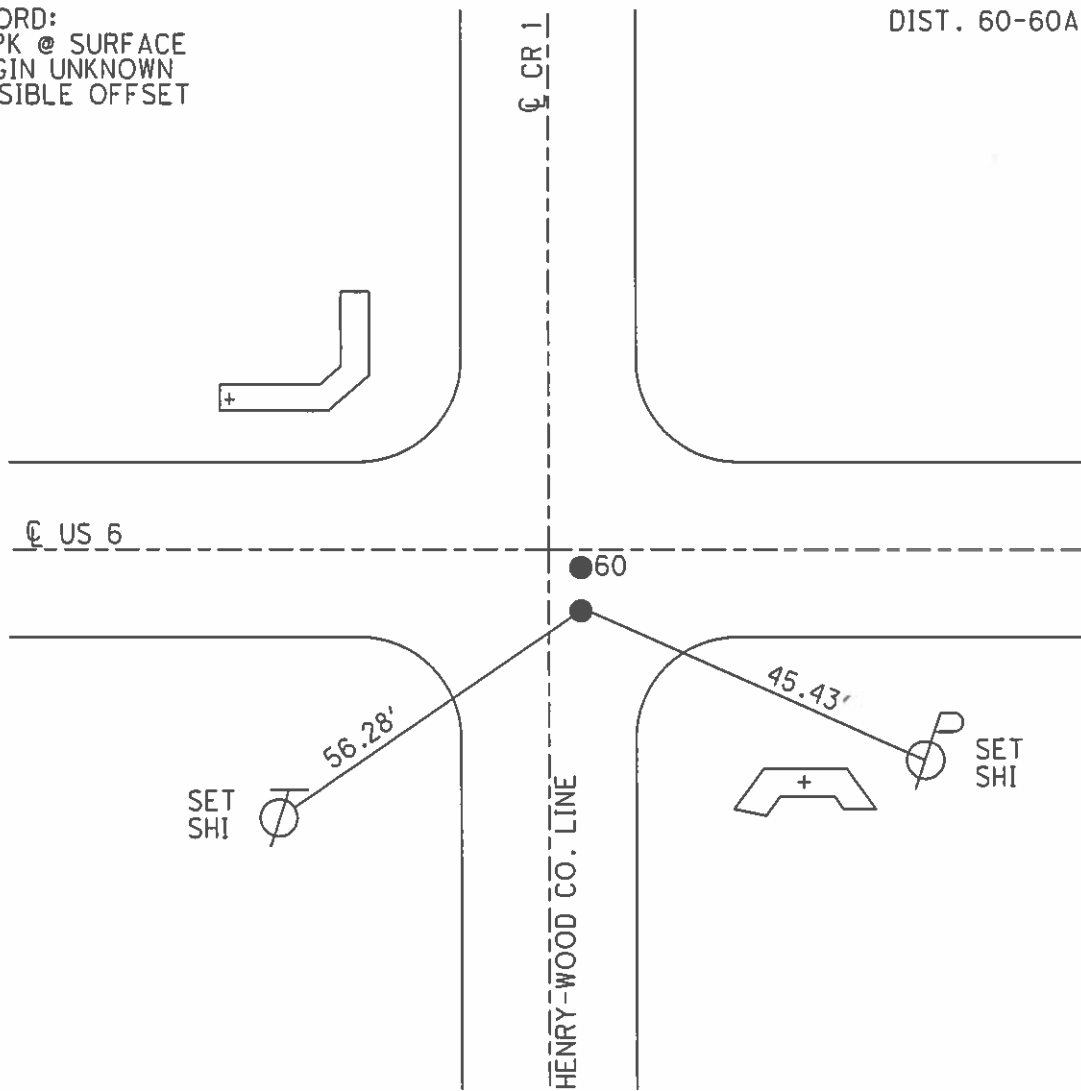
S.L.M. 1477+87.2

GRID: NORTHING: _____ EASTING: _____



RECORD:
 FD PK @ SURFACE
 ORIGIN UNKNOWN
 POSSIBLE OFFSET

DIST. 60-60A = 6.02'



O.D.O.T. DISTRICT 2 SURVEY OFFICE

1 of 12

PERSONNEL

REFERENCE NO. 60

SHEET 17 OF 17

NOTES Huss

DATE 10-30-01

ROUTE US 6

H.C. Reuss

WEATHER Cloudy

COUNTY HENRY

R.C. VanDusen

TEMP. 57°

TOWNSHIP DAMASCUS

SECTION 25

T 5 N R 8 R

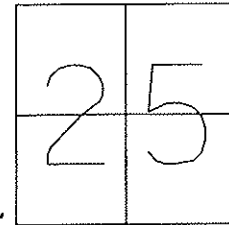
TYPE MONUMENT PK & WASHER

ON SURFACE - BELOW ON SURFACE

LEFT - Q PAV'T - RIGHT 2' RT C/L US6
9.6 TO RT EDGE PAVEMENT 5' RT C.RD1

S.L.M. 1477+08

SLM = 27.99 = 1477 + 87.2 = 0.00 IN WOOD CO.



RECORD: "A"-FOUND BRASS MON.
 3" BELOW SURFACE, 1.9' S.
 OF C/L US 6. 5.0' E. OF
 C/L CO. RD. IPT. "B" FOUND
 PK @ SURFACE ORIGIN UNKNOWN
 "POSSIBLE OFFSET"

SET PK AND WASHER
 "A" 1-23-02 SAH

Fd. "+" TOP WEST END
 CONC. HDWL.

