

# 9031

FED. RD. DIVISION	STATE	PROJECT	FISCAL YEAR
2	OHIO		1948

1/16

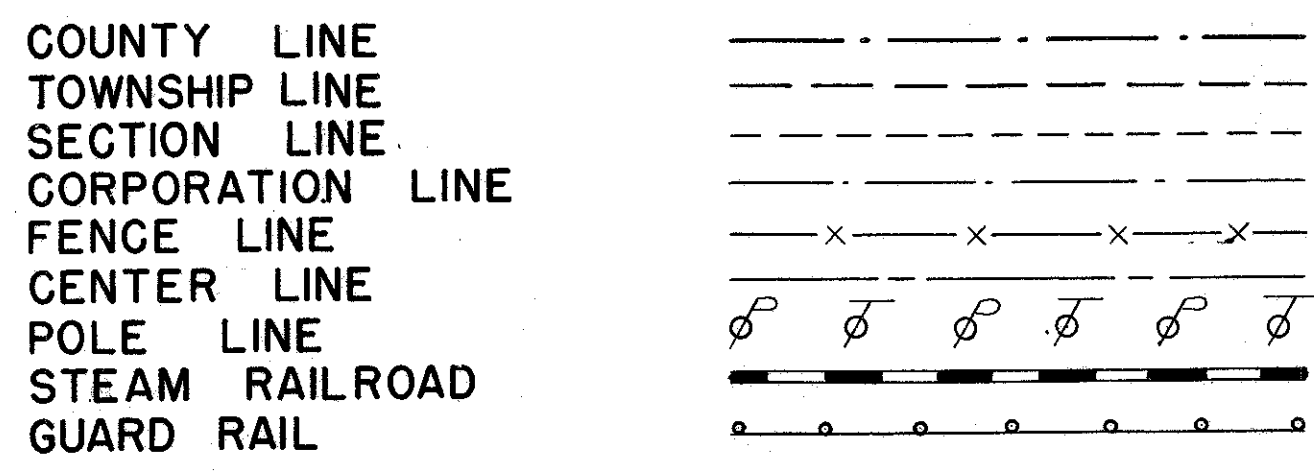
STATE OF OHIO  
DEPARTMENT OF HIGHWAYS

HEN-18-(17.42-20.12)

HENRY COUNTY  
BARTLOW TOWNSHIP  
VILLAGE OF DESHLER

HENRY COUNTY  
HEN-18-(17.42-20.12)

CONVENTIONAL SIGNS

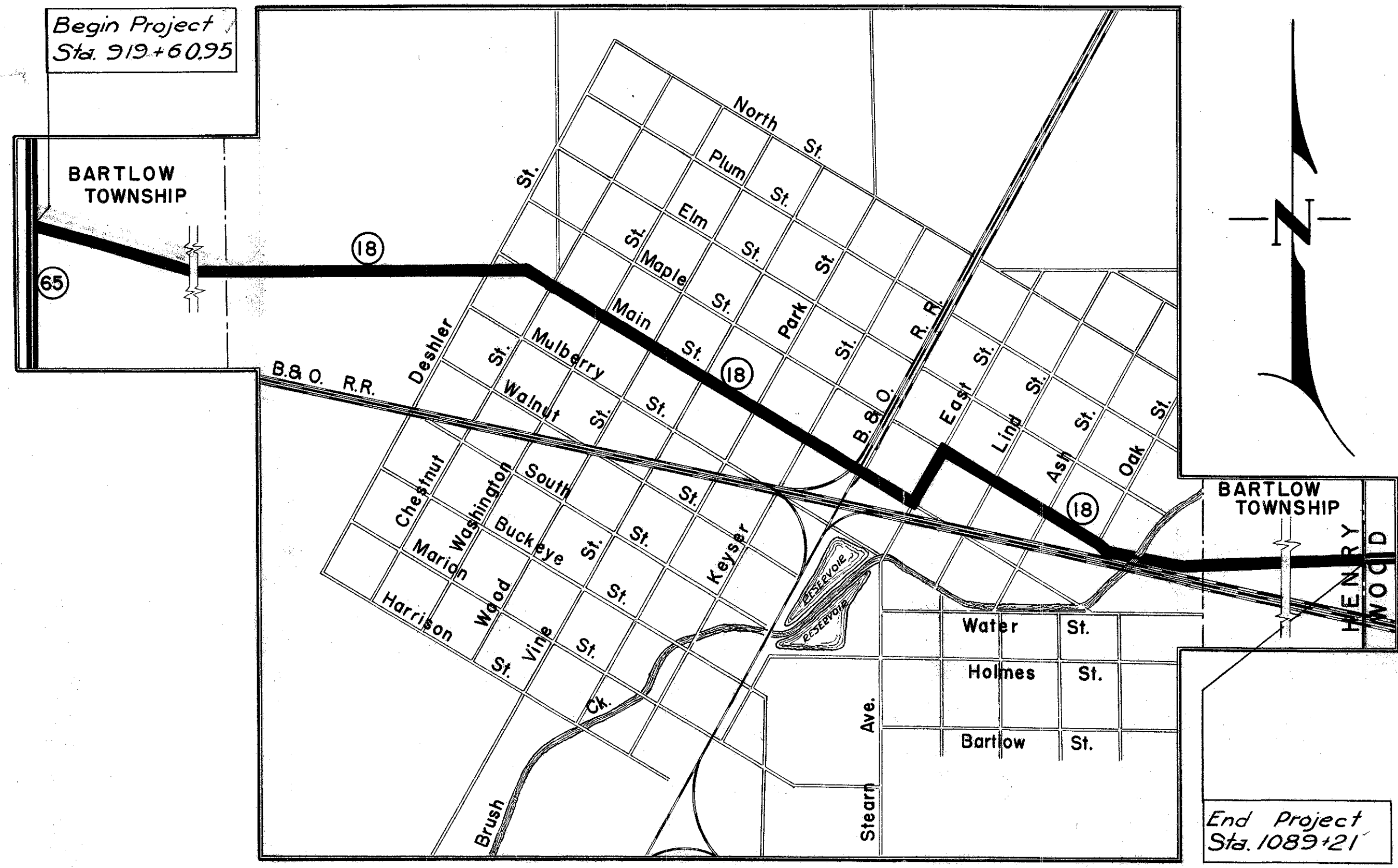


INDEX OF SHEETS

TITLE SHEET	1
TYPICAL SECTIONS	2-3
GENERAL NOTES	4
GENERAL SUMMARY	4
PAVEMENT COMPUTATIONS	4
PLAN & PROFILE SHEETS	5-16

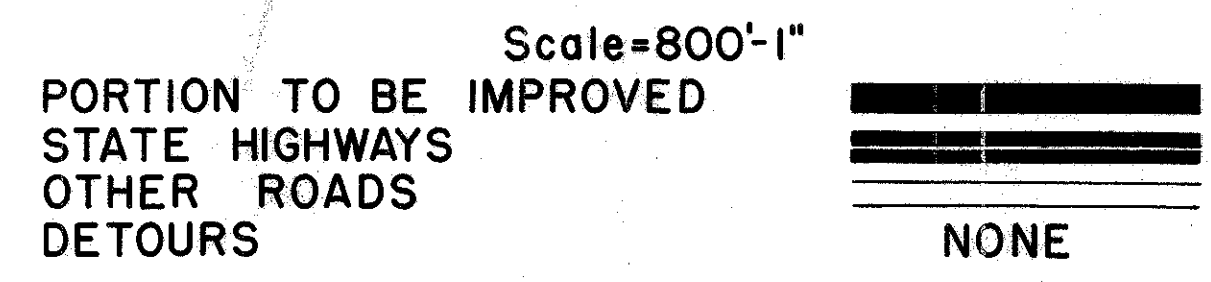
LINE DATA

Begin Project	Sta. 919+60.95
End Project	Sta. 1089+21.00
Gross Length	1696005 lin. ft.
Begin Project Rural (PT)	Sta. 919+60.95
End Project Rural (PT)	Sta. 976+21.00
Begin Project Rural (PT)	Sta. 1062+87.00
End Project Rural (PT)	Sta. 1089+21.00
Gross Length = Net Length Rural (PT)	= 829405 Lin. ft. or 1570 Mi.
Begin Municipal (PT)	Sta. 976+21.00
End Municipal (PT)	Sta. 1062+87.00
Gross Length	8666.0 Lin. ft.
Deduct for Railroad	55.0 Lin. ft.
Net Length Municipal (PT)	8611.0 Lin. ft. or 1.630 Mi.
Net Length of Project	16905.05 Lin. ft. or 3201 Mi.



LOCATION PLAN

DELIVERY POINT-DESHLER AVERAGE HAUL- 1 Mi.



SCALES

PLAN	1" = 50'
PROFILE HORIZONTAL	1" = 50'
PROFILE VERTICAL	1" = 5'

SUPPLEMENTAL SPECIFICATIONS		STANDARD DRAWINGS	
		L-3	2-1-47

The Standard Specifications of the State of Ohio, Department of Highways, including changes and Supplemental Specifications listed in the proposal shall govern this improvement.

The right of way for this improvement will be provided by the State of Ohio.

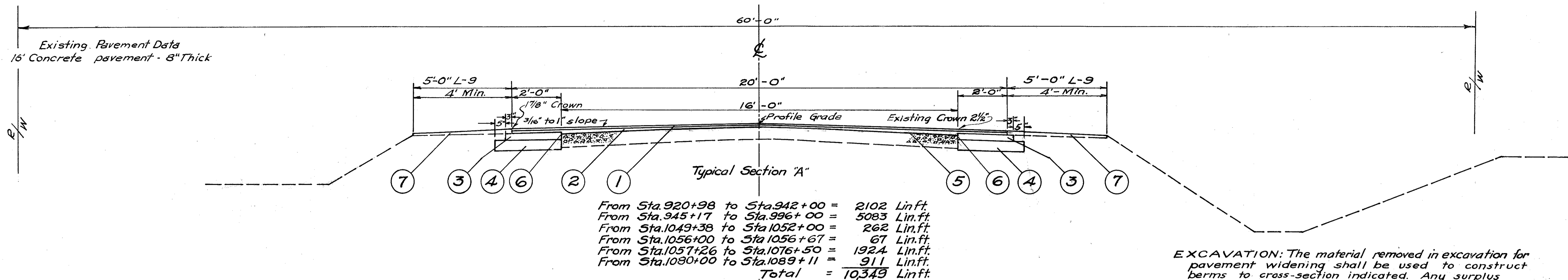
I hereby approve these plans and declare that the making of this improvement will not require the closing to traffic of the Highway and that provisions for the maintenance and safety of traffic will be set forth on the plans and estimates.

- Approved W. B. Robins  
Date: 6-9-48 Division Deputy Director.
- Approved \_\_\_\_\_  
Date: \_\_\_\_\_ Chief Engineer, Bureau of Maintenance.
- Approved J. B. Hoque  
Date: 6-30-48 Chief Engineer, Bureau of Bridges & R.R. Crossings.
- Approved George J. Tharmeyer  
Date: 7/3/48 Chief Engineer, Bureau of Location & Design.
- Approved Frank M. Williams  
Date: 7-6-48 First Asst. Director & Chief Engineer.
- Approved Earl L. Reeb  
Date: 7-6-48 Director of Highways.

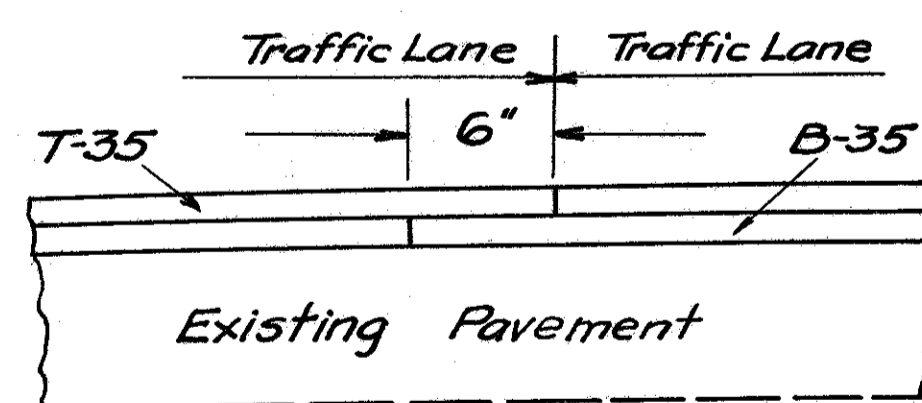
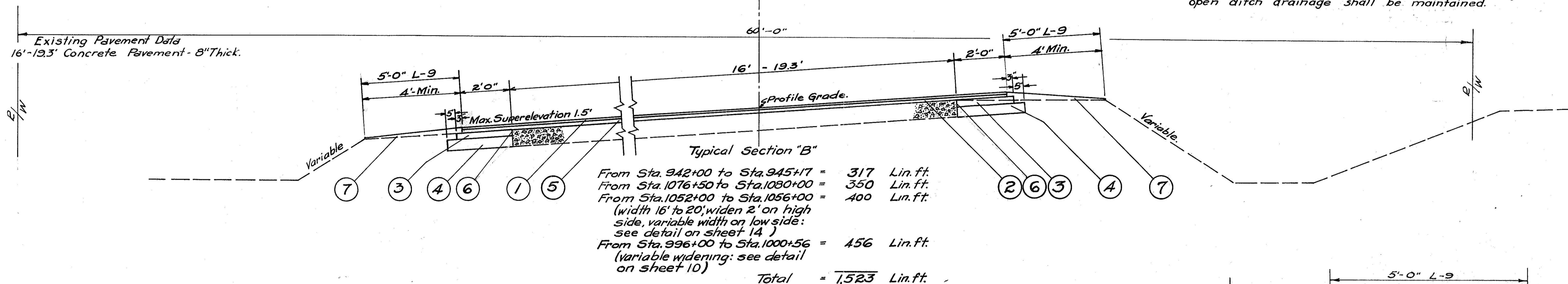
FILE NO.	HENRY COUNTY-HEN-18-(17.42-20.12)
DATE OF LETTING	_____ 1948
CONTRACT NO.	_____

CONSTRUCTION BUREAU  
JUN 23 1955  
GROUND PHOTOLAB

# TYPICAL SECTION TYPE T-35

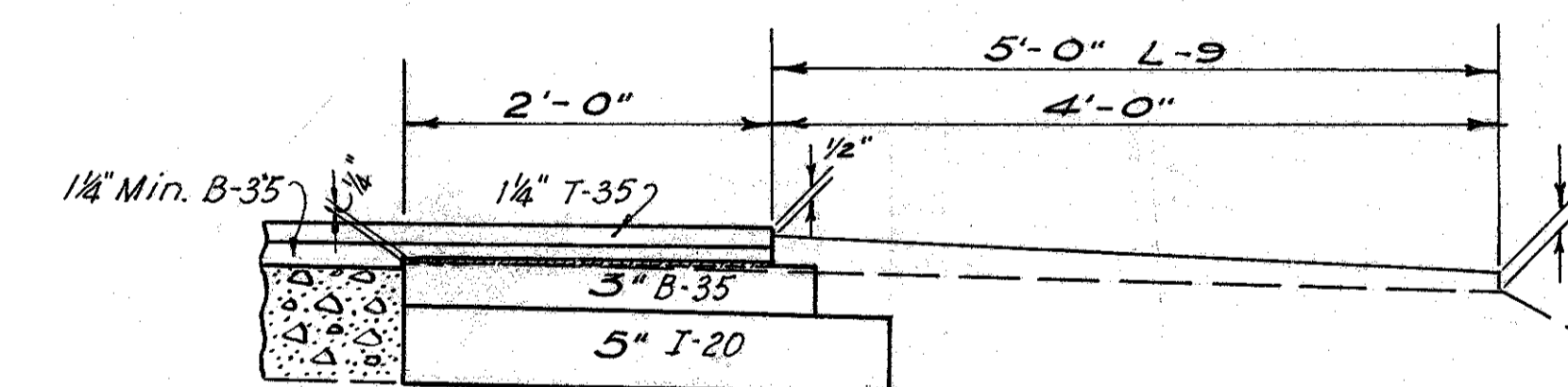


EXCAVATION: The material removed in excavation for pavement widening shall be used to construct berms to cross-section indicated. Any surplus excavation shall be used to widen berms or flatten slopes as directed by Engineer. Existing open ditch drainage shall be maintained.



Detail: Showing method of lapping of Longitudinal Joints.

- ① Item T-35, 1 1/4" Asphaltic Concrete Surface Course, Type "A".
- ② Item B-35, 1 1/4" Minimum Thickness Asphaltic Concrete Leveling Course.
- ③ Item B-35, 3" Asphaltic Concrete Leveling Course
- ④ Item I-20, 5" Insulation Course, (Coarse Graded Type.)
- ⑤ Item T-30, Bituminous Tack Coat, using Bituminous Material, Sec. M-5.5, MS-1 or MS-3 applied at the rate of 0.10 Gal. per sq. yd. including sand cover.
- ⑥ Item E-8, Sealing Only
- ⑦ Item L-9, Seeding & Protecting, Type "A".



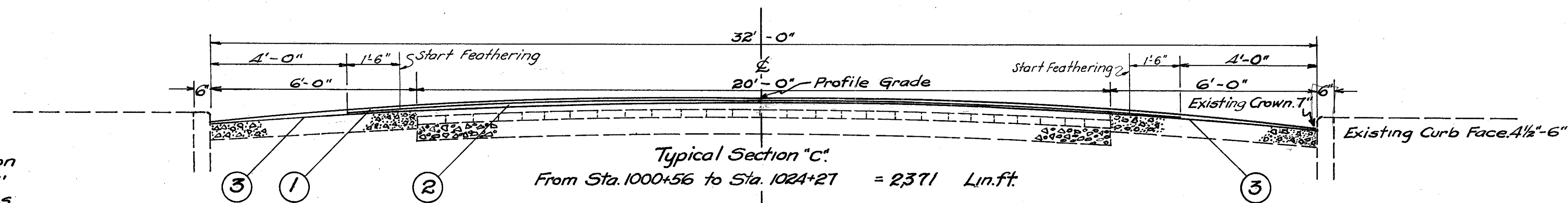
DETAIL: Edge Construction

Where the 3 inch leveling course in the widened area would finish more than 1/4 inch above the edge of the existing pavement, that portion below the dashed line shall be placed and compacted in a separate operation. The hatched portion above the dashed line shall be placed simultaneously with the full width leveling course.

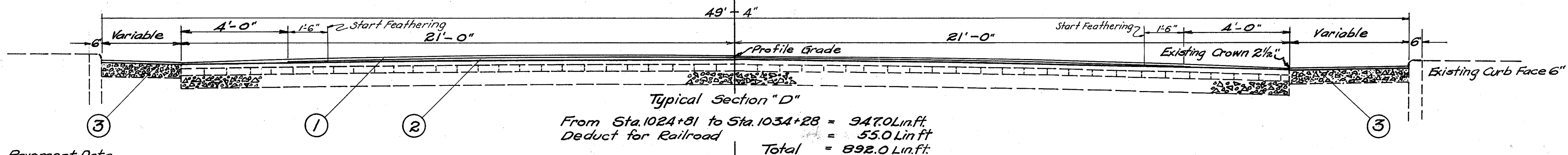
# TYPICAL SECTION TYPE T-35

HENRY COUNTY  
HEN-18-(17.42-20.12)

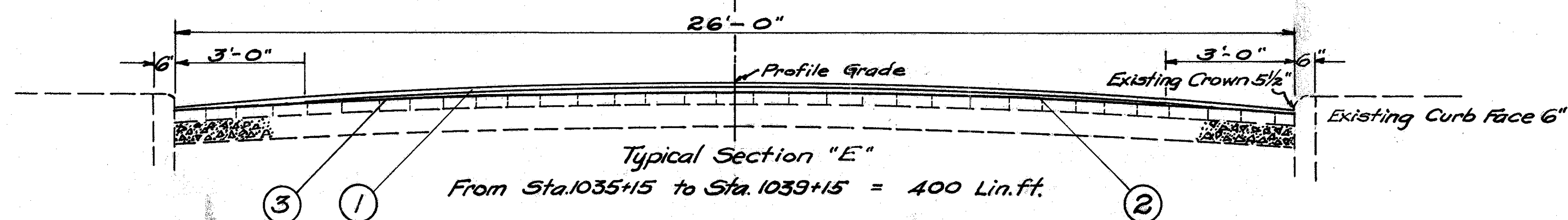
Existing Pavement Data.  
20' Bit. Conc. on Brick, sand cushion  
and Waterbound Macadam base, 6'  
concrete widening on both sides.



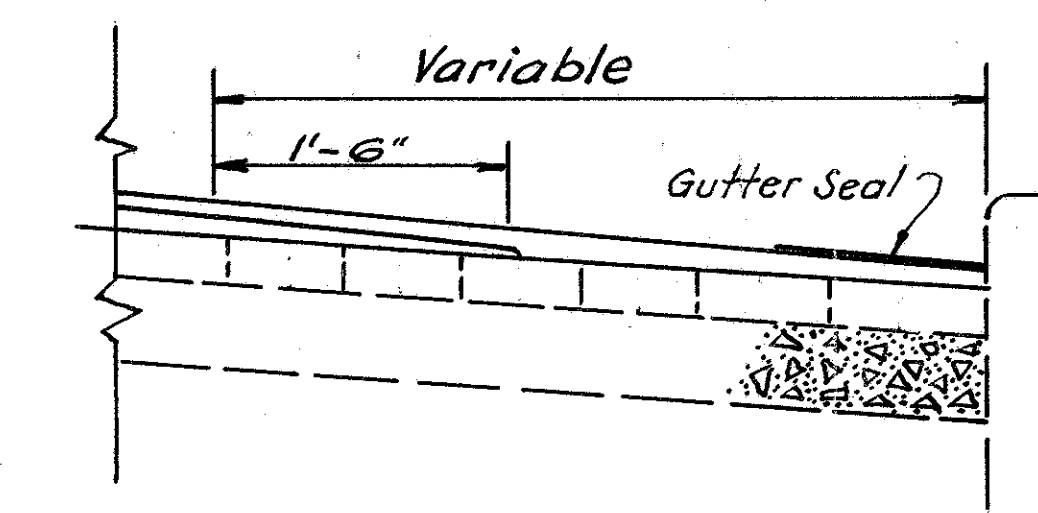
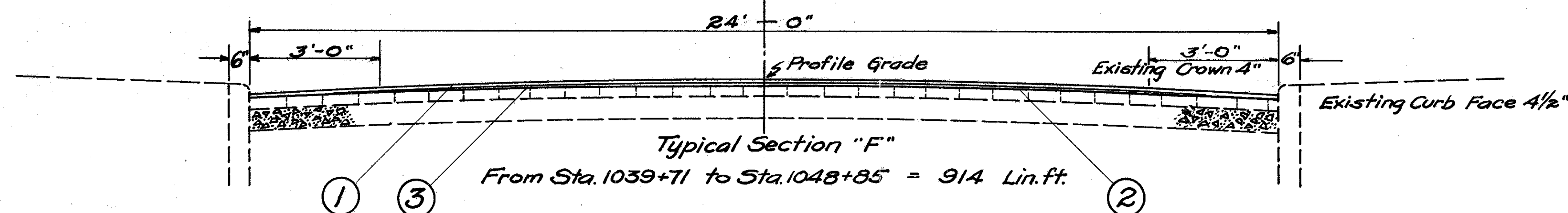
Existing Pavement Data.  
42' Bit. Conc. on Brick, on sand cushion  
waterbound base, 4'4" concrete wide-  
ning on Rt. & 3' on the Lt.



Existing Pavement Data.  
26' Brick surface on sand cushion  
on concrete base.



Existing Pavement Data.  
24' Brick surface on sand cushion  
on concrete base.



- ① Item T-35, 1" Asphaltic Concrete Surface Course, Type "C".
- ② Item B-35, 1 1/4" Minimum Thickness, Asphaltic Concrete Leveling Course.
- ③ Item T-30, Bituminous Tack Coat, using Bituminous Material, Sec. M-5.5, MS-1 or MS-3 applied at the rate of 0.10 Gal. per sq. yd. including sand cover.

### GENERAL NOTES

**EARTHWORK:** Watering embankments, benching, density requirements and the removal of sod from the shoulder will not be required for the roadway sections to be widened. However, Item E-1 shall include the thorough compaction of embankment in layers not exceeding eight (8) inches compacted thickness, and shall include any operations of grading necessary to finish the shoulders and slopes substantially to the lines indicated on the Typical Sections. No provision of the specifications shall be waived for embankment which shall support any portion of the new pavement.

**PROFILE:** The profile of the proposed Surface Course on the existing pavement shall be approximately 2 1/2 inches above that of the existing pavement, unless otherwise shown on the plan and profile sheets.

**UTILITIES:** All work required to relocate and/or adjust, etc., all gas, oil, telephone, telegraph, electric, water or other services to conform to the new grade and alignment shall be completed by the Utilities in question.

**FILLING MAJOR DEPRESSIONS:** Major depressions in existing pavement shall be filled and compacted with Bituminous Concrete Leveling Material in advance of placing the regular Leveling Course. These depressions shall be filled in layers not to exceed 3 inches in depth when compacted.

**TRAFFIC:** Traffic shall be maintained at all times. The length of one way traffic zones shall be kept to a minimum consistent with the requirements of Sec. T-35.23. The item of "Maintaining Traffic" shall include furnishing of lights, signs, barricades and watchmen necessary to secure the flow of traffic twenty-four (24) hours daily.

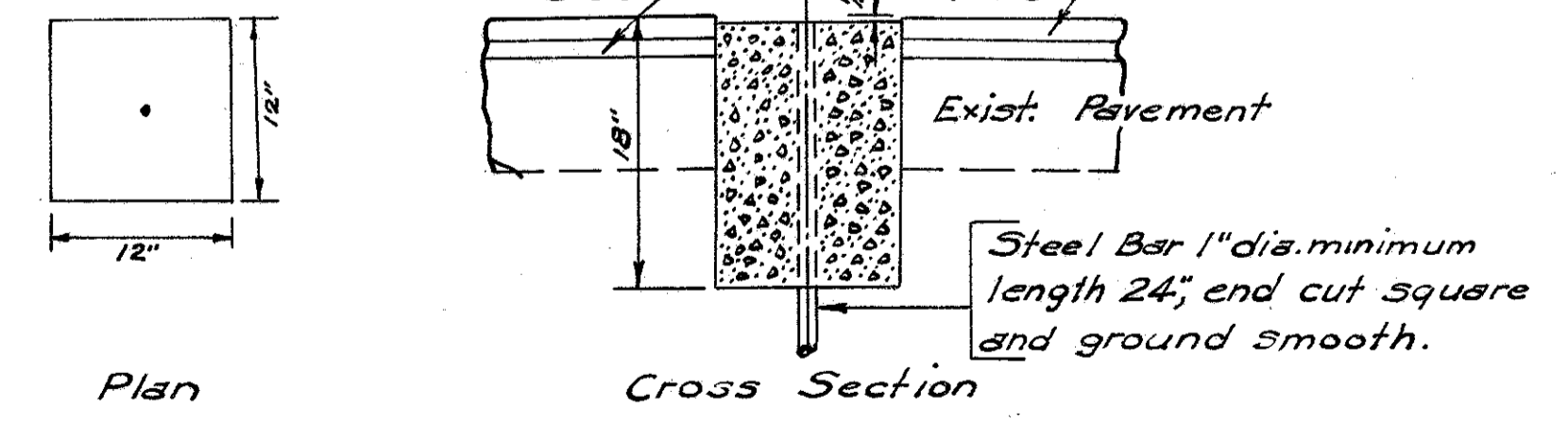
**CONTROL POINTS:** Before construction operations begin the Engineer will reference all existing monuments, railroad spikes, iron bolts, etc., in Survey Line. Upon completion of the surfacing the Engineer will recheck all these control points in the new pavement.

**RESETTING CASTINGS:** This item shall be performed after completion of the leveling course and prior to placing the surface course. Compaction of the material around castings inaccessible to rollers shall be in accordance with the requirements of Sec. T-50.21. Portions of the existing pavement removed to adjust manhole, and other castings to the grade of the new surface shall be replaced the full depth with Class "C" Concrete.

**EXISTING GUTTERS:** Special attention shall be given to the resurfacing of existing gutters in the vicinity of drainage structures, so that deep depressions can be eliminated and permit gutter flow to reach outlets.

Extra I-20 and B-35 to be used for pavement replacement at locations designated by the Engineer.

**E-8 SEALING ONLY:** - In addition to the requirements of Sec. E-8.04 Sealing Joints the edges of existing pavement to be sealed shall be thoroughly cleaned before applying the sealing agent.



Notes: Cost of necessary pavement removal, furnishing Steel Bar and Class "C" Concrete is included in the Unit Price for Item I-8. Monuments, As Per Plan.

Monument to be set at Sta. 974+28.1 Total = 1

**RAILROAD CROSSING:** The new surface course shall be feathered to meet the rail grades if necessary.

### PAVEMENT COMPUTATIONS

From Typical Section "A" (10,349 x 20) ÷ 9	=	22,998 Sq.Yds.
From Typical Section "B" Sta. 942+00 to 945+17 Sta. 1076+50 to 1080+00 Total (667 x 20) ÷ 9	=	317 Lin.Ft. 350 Lin.Ft. 667 Lin.Ft. 1482 Sq.Yds.
T-35, 1 1/4" Surface Course, Type "A" 22,998 + 1482 Add from Extra Pavement Total	=	24,480 Sq.Yds. 3359 Sq.Yds. 27839 Sq.Yds.
27,839 x 5/144	=	967 Cu.Yds.
Total, Rural = 683 Cu.Yds, Municipal = 284 Cu.Yds.		
B-35, 1 1/4" Minimum Thickness Leveling Course. 22,998 + 1482 Add for Extra Pavt from I-P, 2-P, 19-P, 20-P, 21-P, 22-P Total 24480+3060 27,540 x 5/144 Add for Surface irregularities Total Total, Rural = 887 Cu.Yds, Municipal = 369 Cu.Yds.	=	24480 Sq.Yds. 3060 Sq.Yds. 27,540 Sq.Yds. 956 Cu.Yds. 300 Cu.Yds. 1256 Cu.Yds. 369 Cu.Yds.
B-35, 3" Thick 10,349 lin.ft. + 667 lin.ft. (11,016 x 4 1/2) ÷ 9 Add from Extra Pavement Add for Replacement Total 5996 x 1/12 Rural = 382 Cu.Yds, Municipal = 118 Cu.Yds.	=	11,016 Lin.Ft. 5,508 Sq.Yds. 438 Sq.Yds. 59 Sq.Yds. 5996 Sq.Yds. 500 Cu.Yds.
I-20, 5" Insulation Course (Coarse Graded Type) 10,349 + 667 (11,016 x 5 1/2) ÷ 9 Add from Extra Pavement Add for Replacement Total Total, Rural = 4,995 Sq.Yds, Municipal = 2,080 Sq.Yds.	=	11,016 Lin.Ft. 6528 Sq.Yds. 497 Sq.Yds. 7075 Sq.Yds. 7075 Sq.Yds.
E-1, Roadway Excavation 10,349 + 667 (11,016 x 5 1/2 x 2 1/2) ÷ 27 Add from Extra Pavement Total Total, Rural = 1137 Cu.Yds, Municipal = 473 Cu.Yds.	=	11,016 Lin.Ft. 1496 Cu.Yds. 114 Cu.Yds. 1610 Cu.Yds.
E-8, Sealing (only) existing Pavement edge. 10,349 + 667 = 11,016 x 2 Add from Summary Extra Pavement Total Total, Rural = 16,635 Lin.Ft, Municipal = 6927 Lin.Ft.	=	22,032 Lin.Ft. 1530 Lin.Ft. 23,562 Lin.Ft.
L-9, Seeding and Protecting, Type "A". 10,349 + 1523 Deduct for Drives, Mail Box Approaches, Intersections, & Gas Station Drives 11,872 - 1800 = (10,072 x 10) ÷ 9 Total, Rural = 1,901 Sq.Yds, Municipal = 5290 Sq.Yds.	=	11,872 Lin.Ft. 1800 Lin.Ft. 11,911 Sq.Yds.
I-17, For Private Drives, Mail Box Appr. & Gas Sta. Drives. (1500 x 8 x 3/4) ÷ 27 74 x 115% Total, Rural 30 Cu.Yds, Municipal = 13 Cu.Yds.	=	74 Cu.Yds. 86 Cu.Yds.
From Typical Sections Sec. "C" (2371 x 32) ÷ 9 Sec. "D" (892 x 49 1/2) ÷ 9 Sec. "E" (400 x 26) ÷ 9 Sec. "F" (914 x 24) ÷ 9 Total Add from Extra Pavement Total	=	8430 Sq.Yds. 4889 Sq.Yds. 1156 Sq.Yds. 2437 Sq.Yds. 16912 Sq.Yds. 1809 Sq.Yds. 18721 Sq.Yds.
T-35, 1" Surface Course, Type "C" 18,721 x 1/36 Total, Rural = None, Municipal = 520 Cu.Yds.	=	520 Cu.Yds.
* E-8, Removal of Full Depth Pavement Estimated	=	50 Sq.Yds.
* E-8, Removal of Existing Brick Surface Course including Cushion. Estimated	=	500 Sq.Yds.

B-35, 1 1/4" Minimum Thickness Leveling Course.

Sec. "C" - 2371 x (32 - 9 1/2) ÷ 9	=	5928 Sq.Yds.
Sec. "D" 892 x (49 1/2 - 16.83) ÷ 9	=	3221 Sq.Yds.
Sec. "E" 400 x (26 - 7 1/2) ÷ 9	=	822 Sq.Yds.
Sec. "F" 914 x (24 - 7 1/2) ÷ 9	=	1675 Sq.Yds.
Total	=	11,646 Sq.Yds.
Add from Extra Pavement	=	905 Sq.Yds.
Total	=	12,551 Sq.Yds.
12,551 x 5/144	=	436 Cu.Yds.
Add to correct Surface Intersection Irregularities	=	280 Cu.Yds.
Total	=	716 Cu.Yds.
Total, Rural None, Municipal = 716 Cu.Yds.		

T-30, Prime Coat.

Sec. "C" (2371 x 12) ÷ 9	=	3161 Sq.Yds.
Sec. "D" (892 x 7 1/2) ÷ 9	=	726 Sq.Yds.
Sec. "E" (400 x 26) ÷ 9	=	1156 Sq.Yds.
Sec. "F" (914 x 24) ÷ 9	=	2437 Sq.Yds.
Total	=	7480 Sq.Yds.
Sec. "A" & "B" = (10,349 + 667) ÷ 9	=	19584 Sq.Yds.
Add from Extra Pavement	=	4774 Sq.Yds.
Total	=	31838 Sq.Yds.
31838 x 0.10	=	3184 Gals.
Total, Rural = 2355 Gals, Municipal = 829 Gals.		

E-8, Removal of Existing Bituminous Wearing Surface.  
Estimated = 1000 Sq.Yds.  
Total, Rural = None, Municipal = 1000 Sq.Yds.

### SUMMARY EXTRA PAVEMENT - "P"

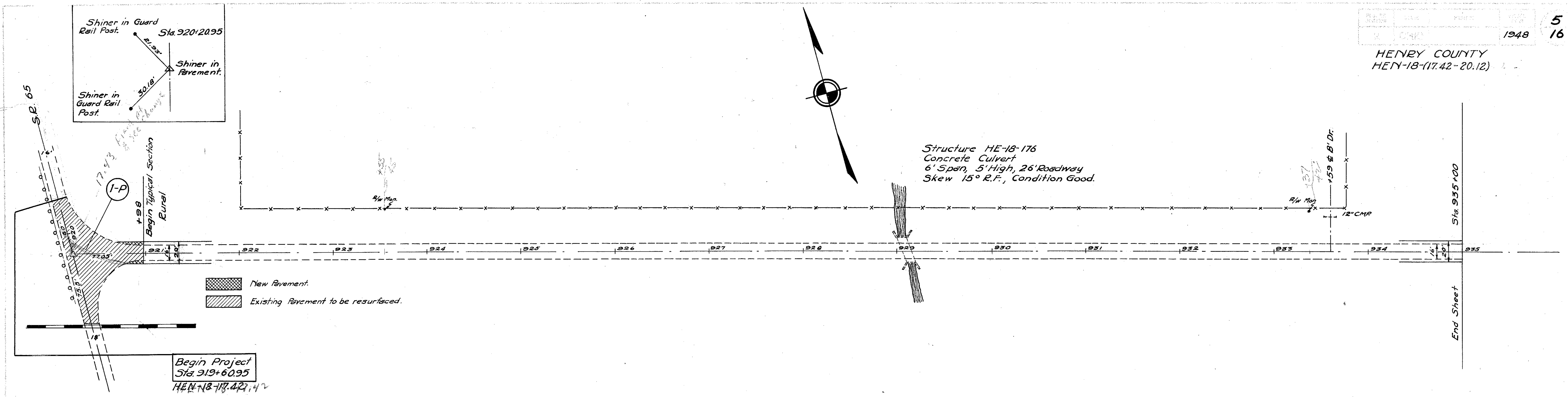
Ref. No.	Sheet No.	Type "A" 1 1/4" T-35	Type "C" 1" T-35	1 1/4" B-35	T-30	3" B-35	5" I-20	E-1 Rdwy Exc.	E-8 Sealing only
		Sq.Yds.	Sq.Yds.	Sq.Yds.	Sq.Yds.	Sq.Yds.	Sq.Yds.	Cu.Yds.	Lin.Ft.
1-P	5	600			600	6	7	15	48
2-P-5P	10	1534		1282	1273	261	285	65	712
6-P-11P	11		549		549				
12-P-14P	12		946	755	946				
15-P-18P	13		314	150	314				
19-P-21P	14	1198		1198	1065	171	205	47.5	770
22-P	16	27		10	27				
Total		3359	1809	3965	4774	438	497	114	1530

### GENERAL SUMMARY

Item	Rural	Municipal	Project Total	Unit	Description
E-1	1137	473	1610	Cu.Yds.	Roadway Excavation.
E-8	16,635	6,927	23,562	Lin.Ft.	Sealing Only
E-8		1000	1000	Sq.Yds.	Removal & Disposal of Existing Bituminous Wearing Course.
I-8		9	9	Each	Gutter Inlets adjusted to grade.
I-8		10	10	Each	Manhole Castings adjusted to grade.
I-8		1	1	Each	Monuments, as per plan
I-17	30	13	43	Cu.Yds.	Side Approaches, Mail Box Turnouts & Berm Material
L-9	7901	3290	11,191	Sq.Yds.	Seeding and Protecting, Type "A".
L-9	0.71	0.30	1.01	Tons	Commercial Fertilizer (10-6-4)
E-8		50	50	Sq.Yds.	Removal & Disposal of Existing Pavement (Brick Surface on Macadam Base)
E-8		500	500	Sq.Yds.	Removal & Disposal of Existing Brick Surface Course
T-35	683	284	967	Cu.Yds.	Asphaltic Concrete Surface Course, Type "A" (70-80)
T-35		520	520	Cu.Yds.	Asphaltic Concrete Surface Course, Type "C" (70-80)
B-35	12,639	1203	2472	Cu.Yds.	Asphaltic Concrete Leveling Course. (70-80)
T-30	2355	829	3184	Gals.	Bituminous Tack Coat, Sec. M-5.5 MS-1 or MS-3.
I-20	4995	2080	7075	Sq.Yds.	5" Insulation Course (Coarse Graded Type).

### GENERAL NOTES CONT'D

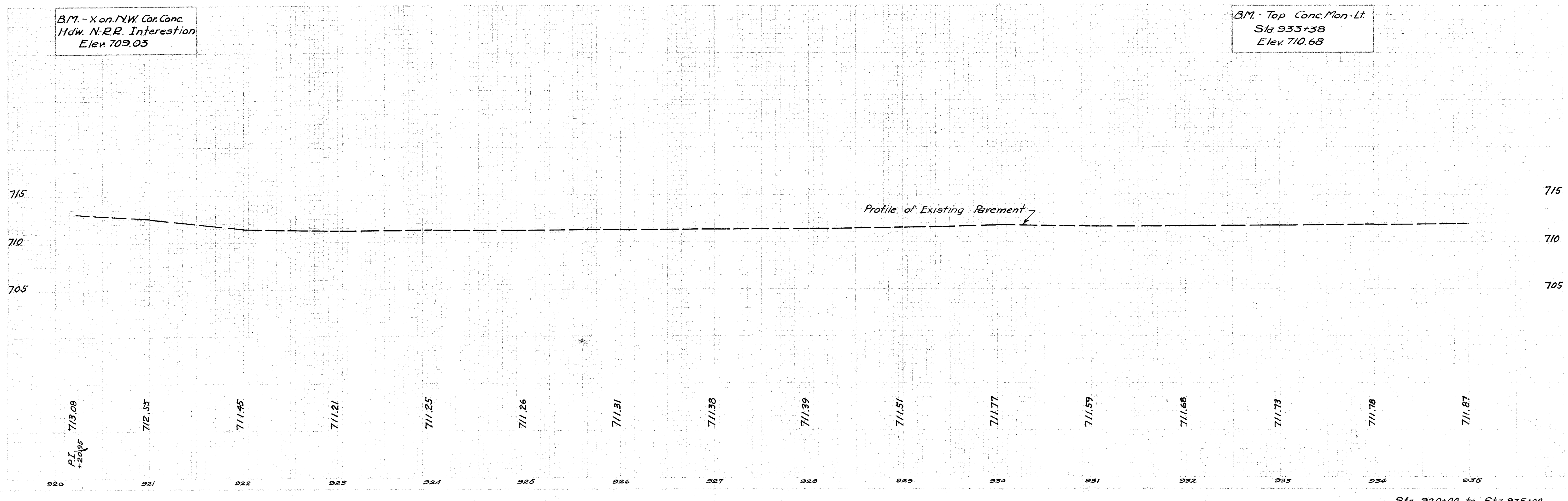
L-9 SEEDING & PROTECTING ROADWAY AREAS: - The method of tying down the mulching material as shown on Standard Drawing L-3 may be replaced over suitable areas, as directed, by the use of a Seaman Pulvi-mixer machine or equal, to incorporate the mulching material with the soil. Any area not treated with the machine shall have the mulching material secured by the usual method shown on the Standard Drawing.



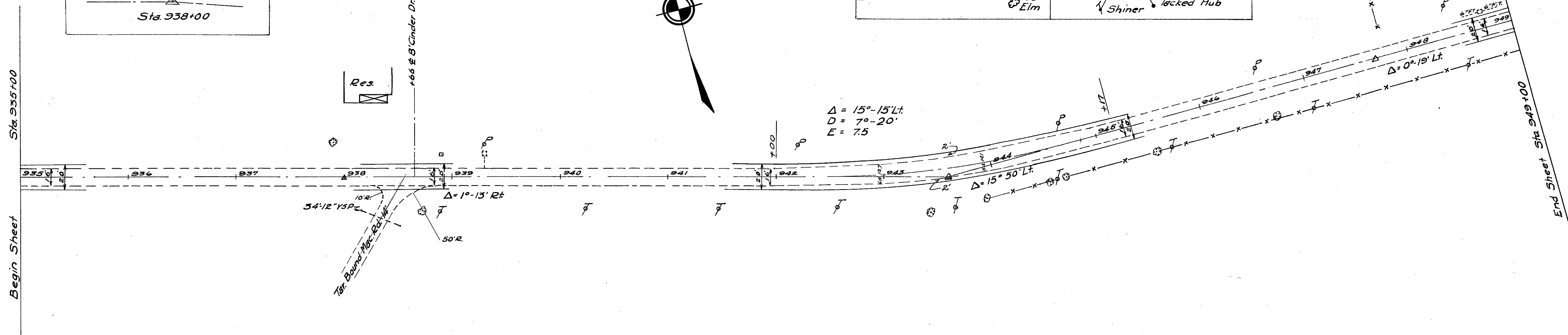
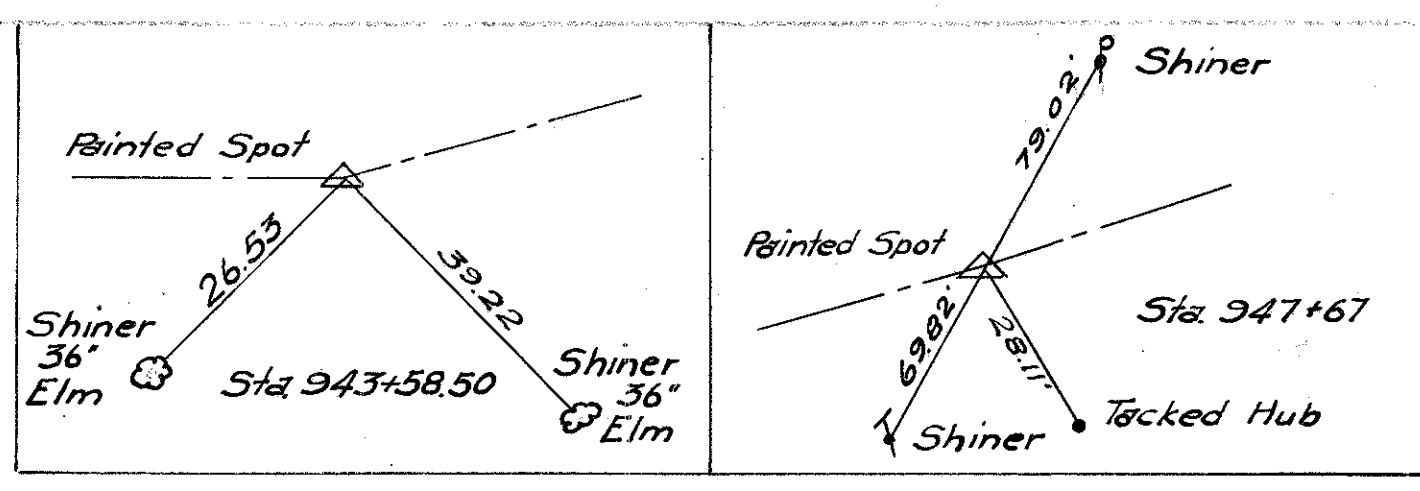
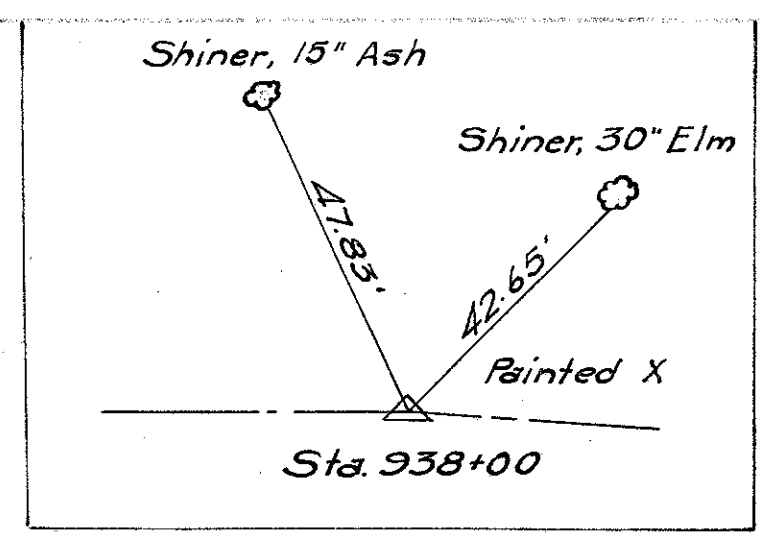
Typical Section of Adjoining Pavement, 16' Concrete.

EXTRA PAVEMENT "P"

Ref. No.	Type "A" T-35 Sq. Yds.	B-35 Sq. Yds.	T-30 Sq. Yds.	3"-B-35 Sq. Yds.	5"-I-20 Sq. Yds.	E-1 Edw. Exca. Cu. Yds.	E-8 Sealing only Lin. Ft.
I-P	600	570	600	6	7	1.5	48
Total	600	570	600	6	7	1.5	48



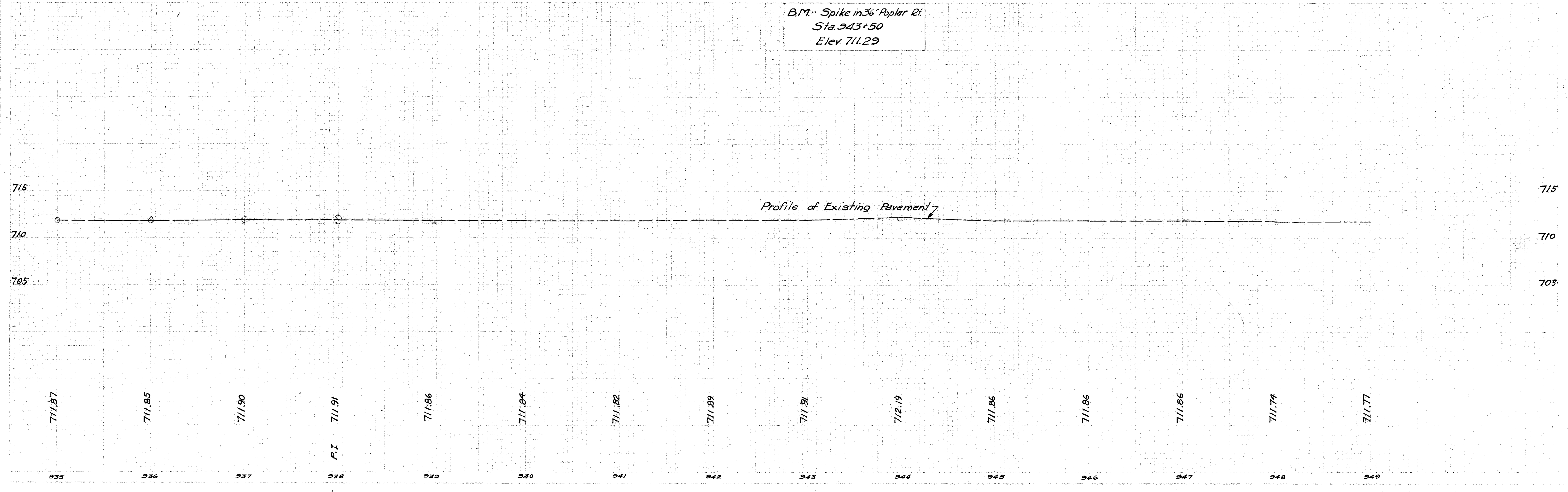
HENRY COUNTY  
HEN-18-(17.42-20.12)



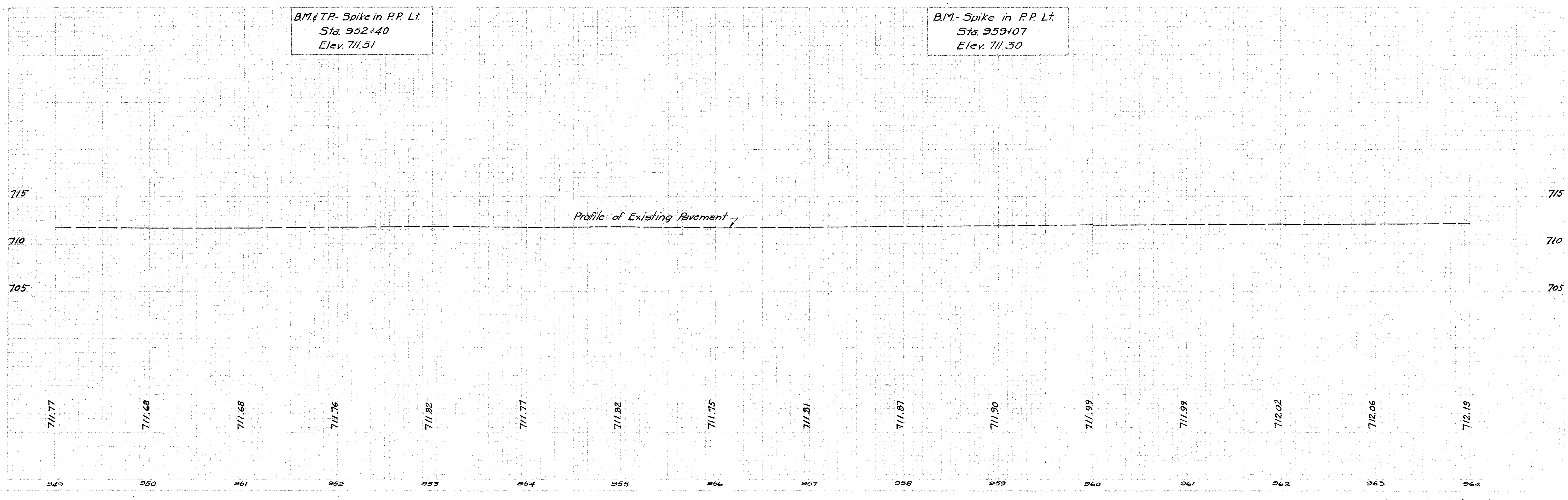
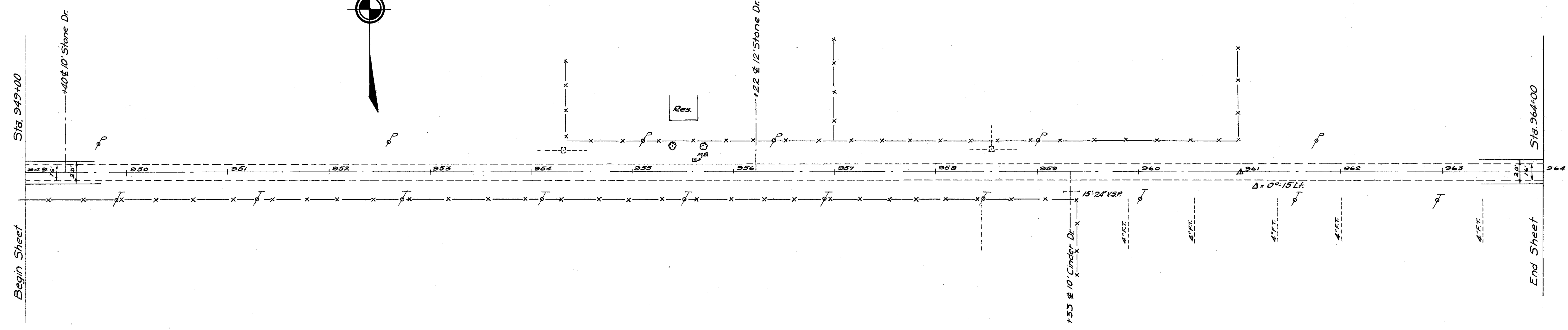
$\Delta = 15^\circ - 15' \text{ Lt.}$   
 $D = 7^\circ - 20'$   
 $E = 7.5$

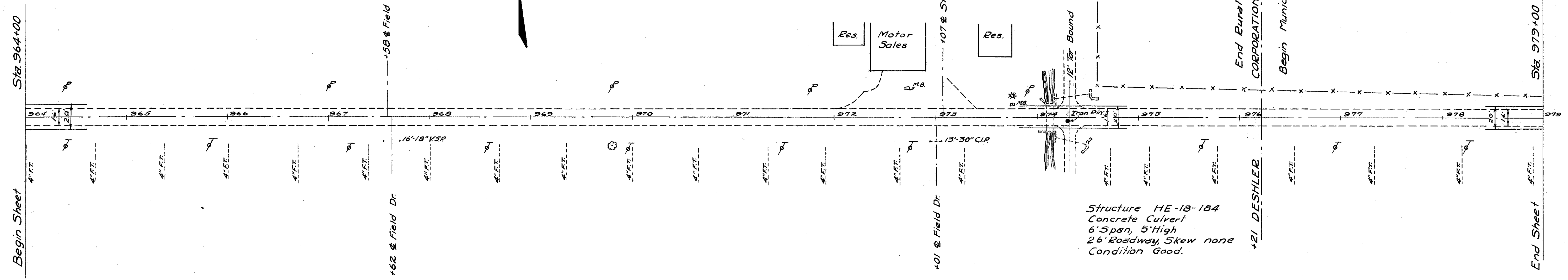
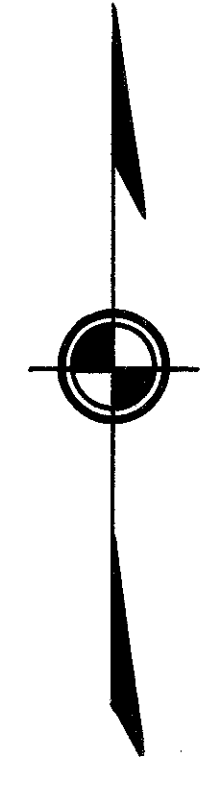
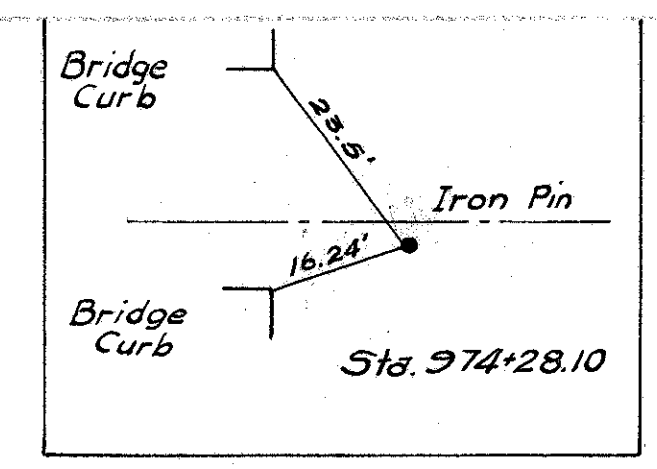
B.M. - Spike in 36" Poplar Lt.  
 Sta. 943+50  
 Elev. 711.29

Profile of Existing Pavement



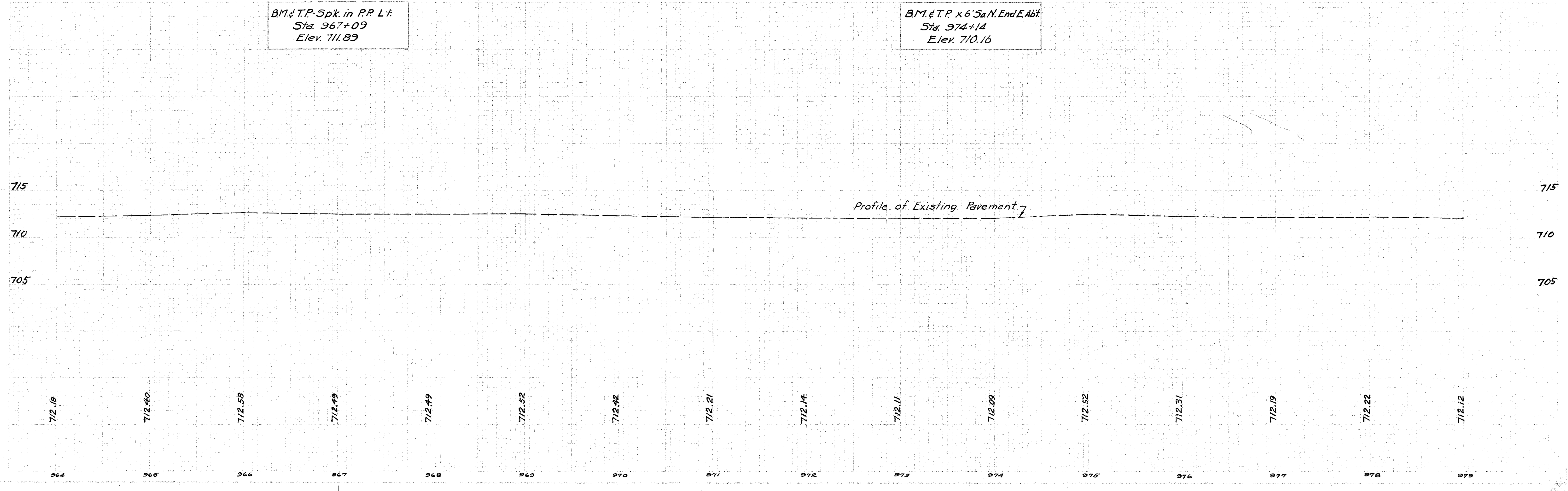
HENRY COUNTY  
HEN-18-(17.42-20.12)



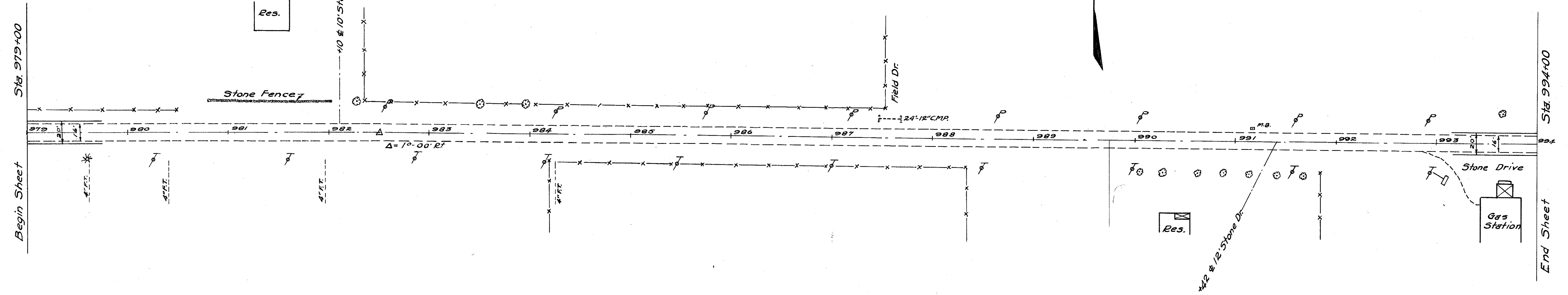
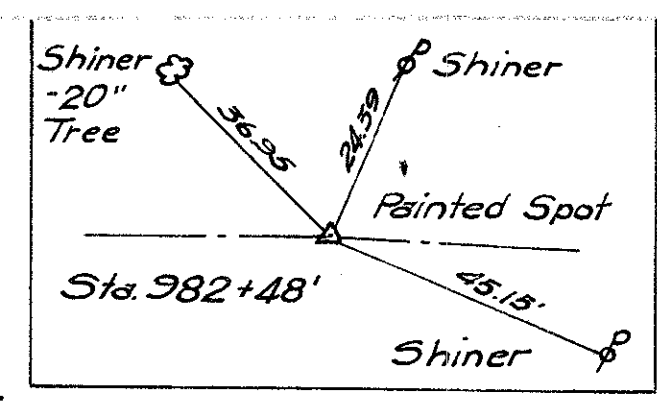
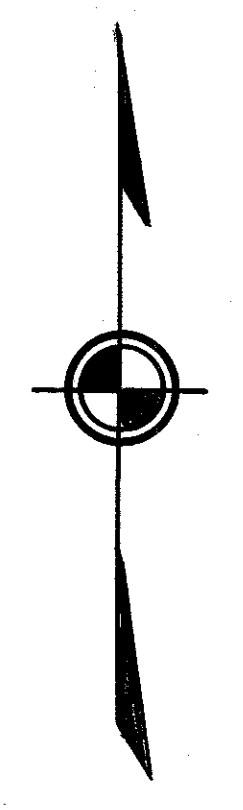


BM & T.P. Spk. in PP Lt.  
Sta. 967+09  
Elev. 711.89

BM & T.P. x 6' Sa N. End E. Abt.  
Sta. 974+14  
Elev. 710.16

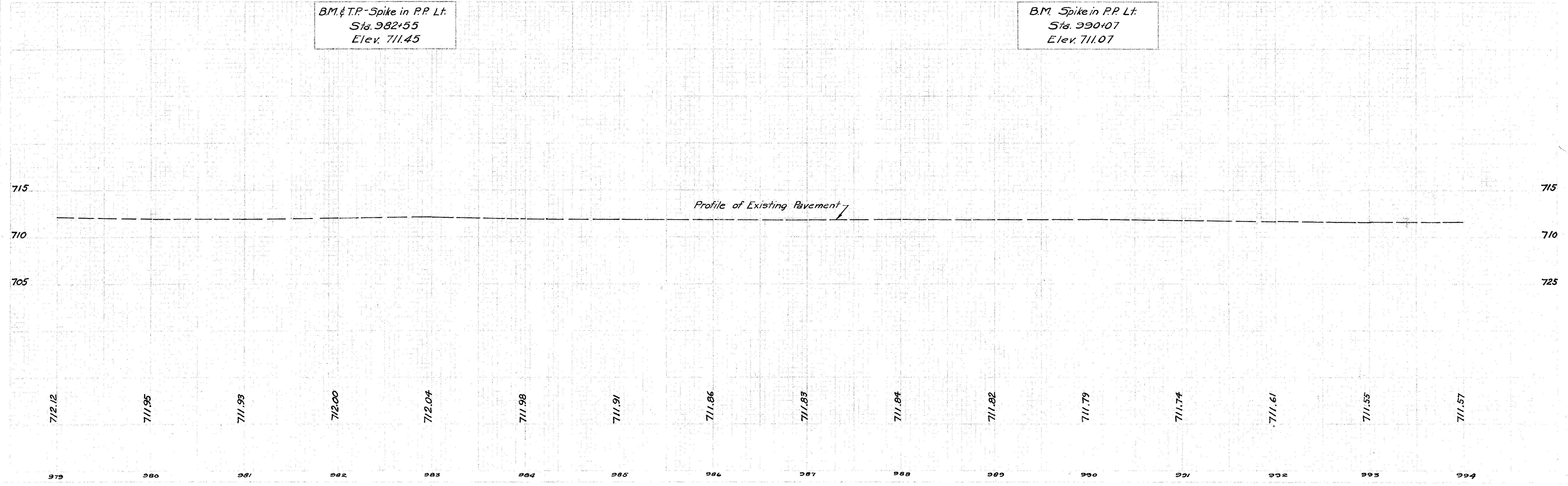


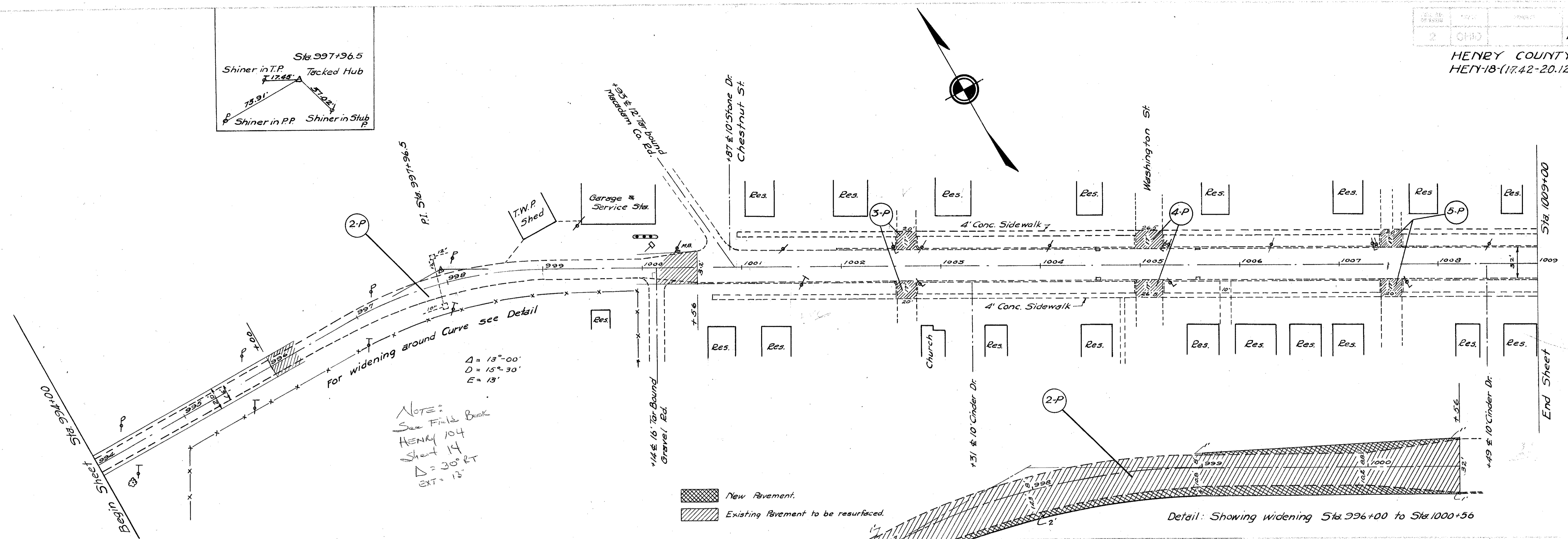
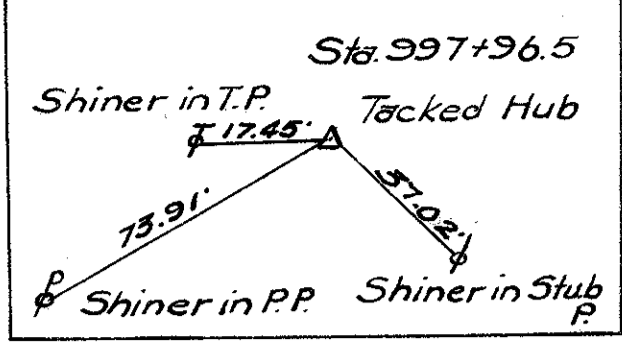




BM & TP-Spike in P.P. Lt.  
Sta. 982+55  
Elev. 711.45

BM Spike in P.P. Lt.  
Sta. 990+07  
Elev. 711.07





NOTE:  
See Field Book  
HENRY 104  
Sheet 14  
Δ = 30° RT  
EXT = 13'

▨ New Pavement.  
▨ Existing Pavement to be resurfaced.

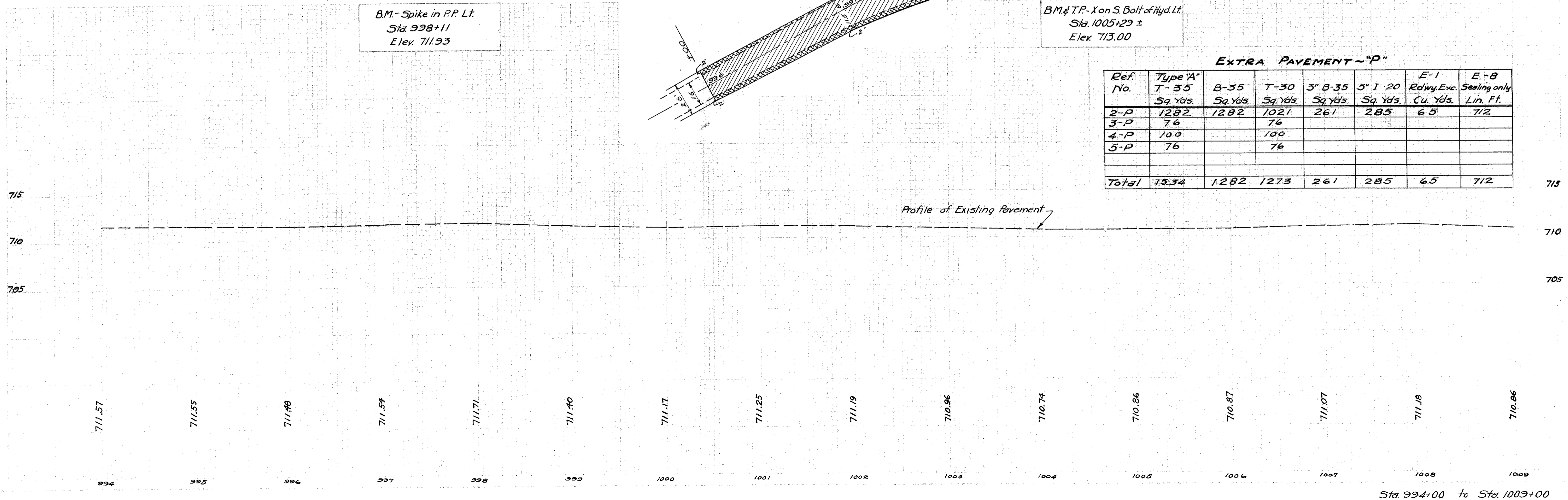
Detail: Showing widening Sta. 996+00 to Sta. 1000+56

B.M. - Spike in P.P. Lt.  
Sta. 998+11  
Elev. 711.93

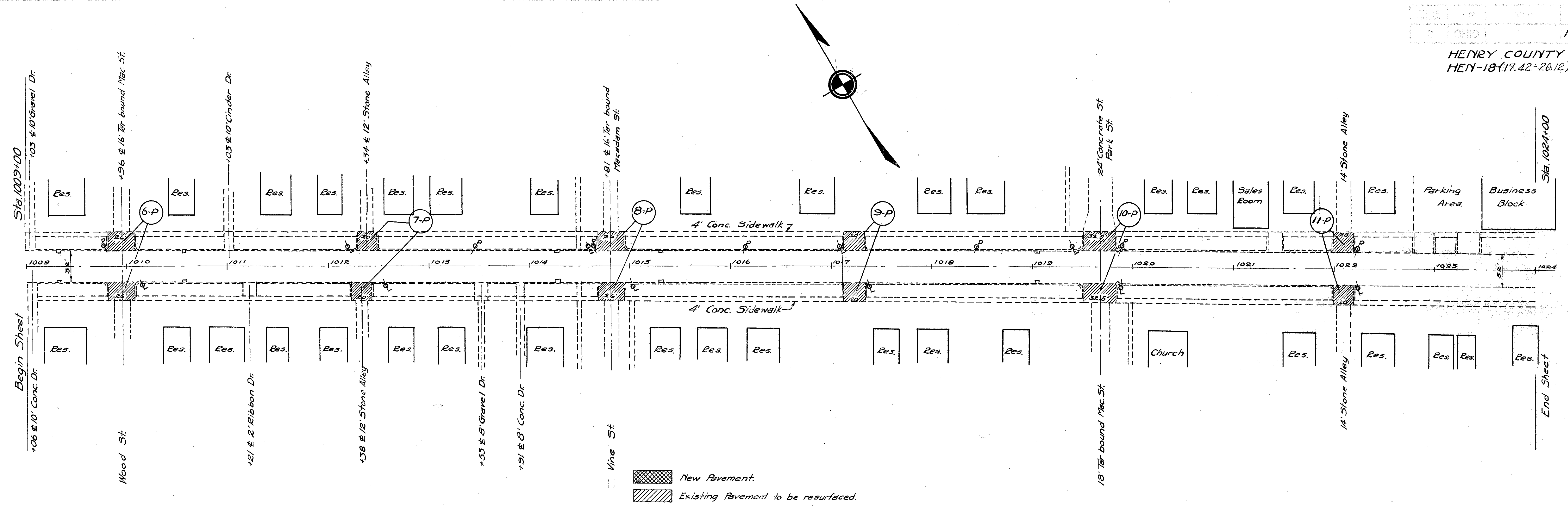
B.M. & T.P. - X on S Bolt of Hyd. Lt.  
Sta. 1005+29 ±  
Elev. 713.00

EXTRA PAVEMENT - "P"

Ref. No.	Type "A" Sq. Yds.	B-35 Sq. Yds.	T-30 Sq. Yds.	3" B-35 Sq. Yds.	5" I-20 Sq. Yds.	E-1 Rowwy. Exc. Cu. Yds.	E-8 Sealing only Lin. Ft.
2-P	1282	1282	1021	261	285	65	712
3-P	76		76				
4-P	100		100				
5-P	76		76				
<b>Total</b>	<b>1534</b>	<b>1282</b>	<b>1273</b>	<b>261</b>	<b>285</b>	<b>65</b>	<b>712</b>



HENRY COUNTY  
HEN-18(17.42-20.12)

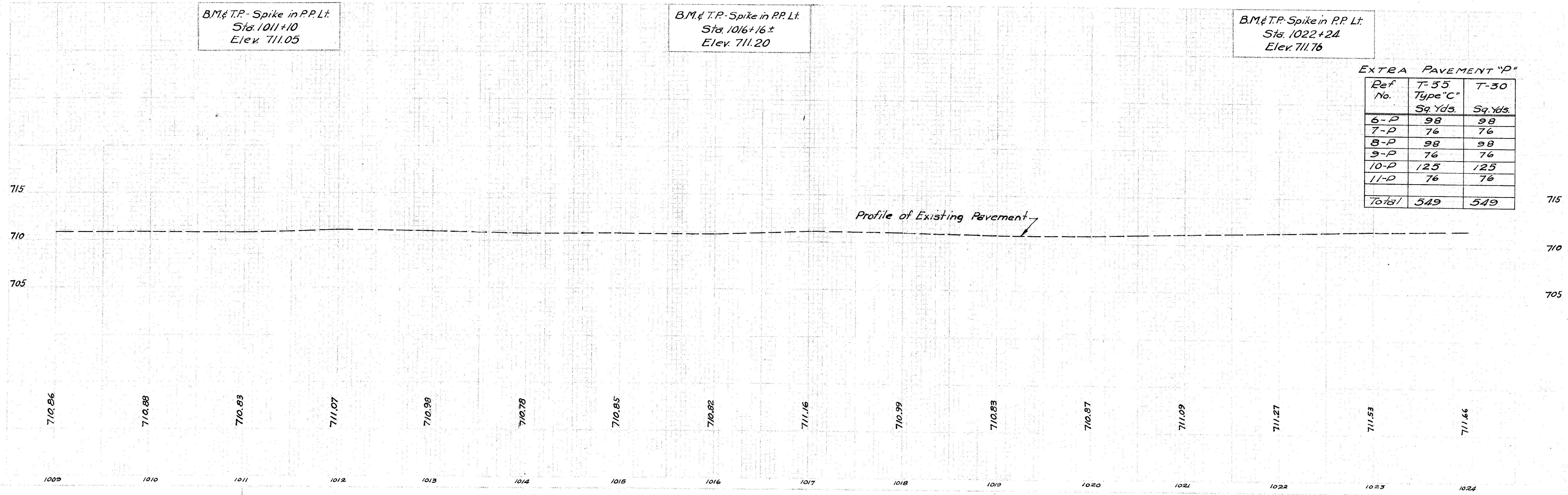


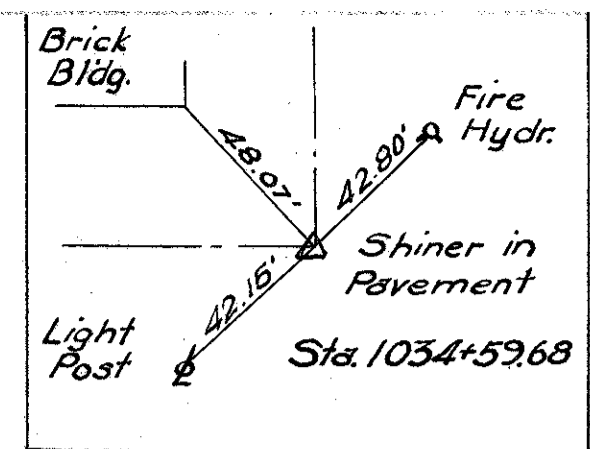
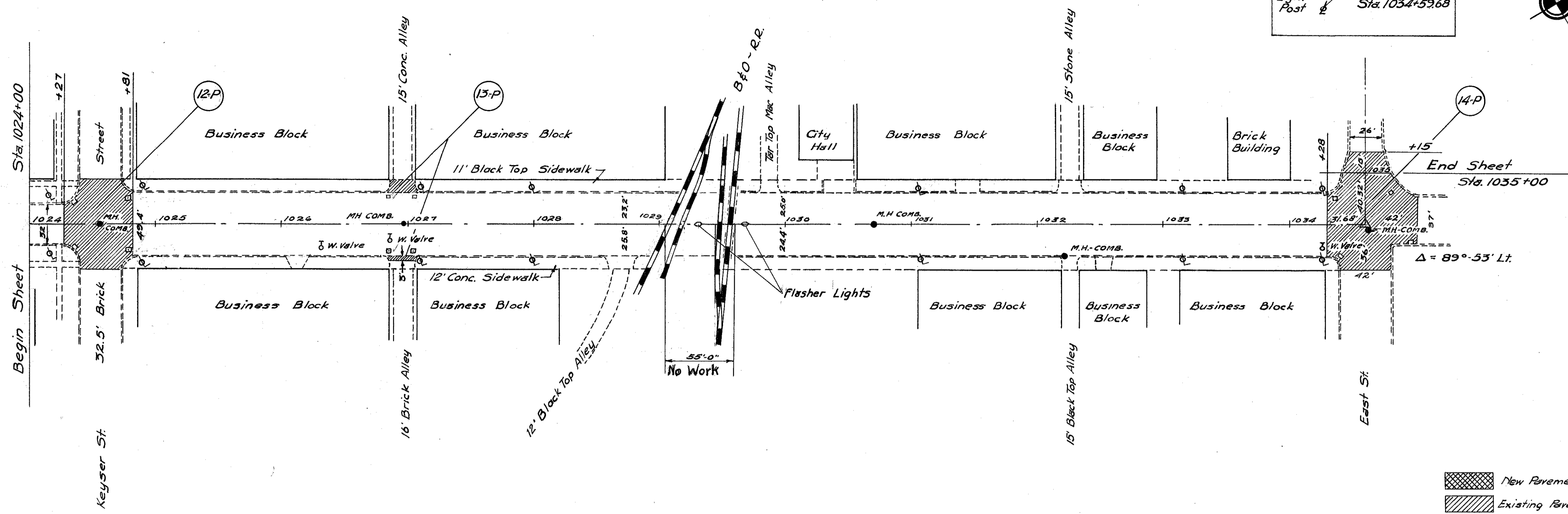
New Pavement.  
 Existing Pavement to be resurfaced.

B.M. & T.P. Spike in P.P.Lt.  
 Sta. 1011+10  
 Elev. 711.05

B.M. & T.P. Spike in P.P.Lt.  
 Sta. 1016+16±  
 Elev. 711.20

B.M. & T.P. Spike in P.P.Lt.  
 Sta. 1022+24  
 Elev. 711.76





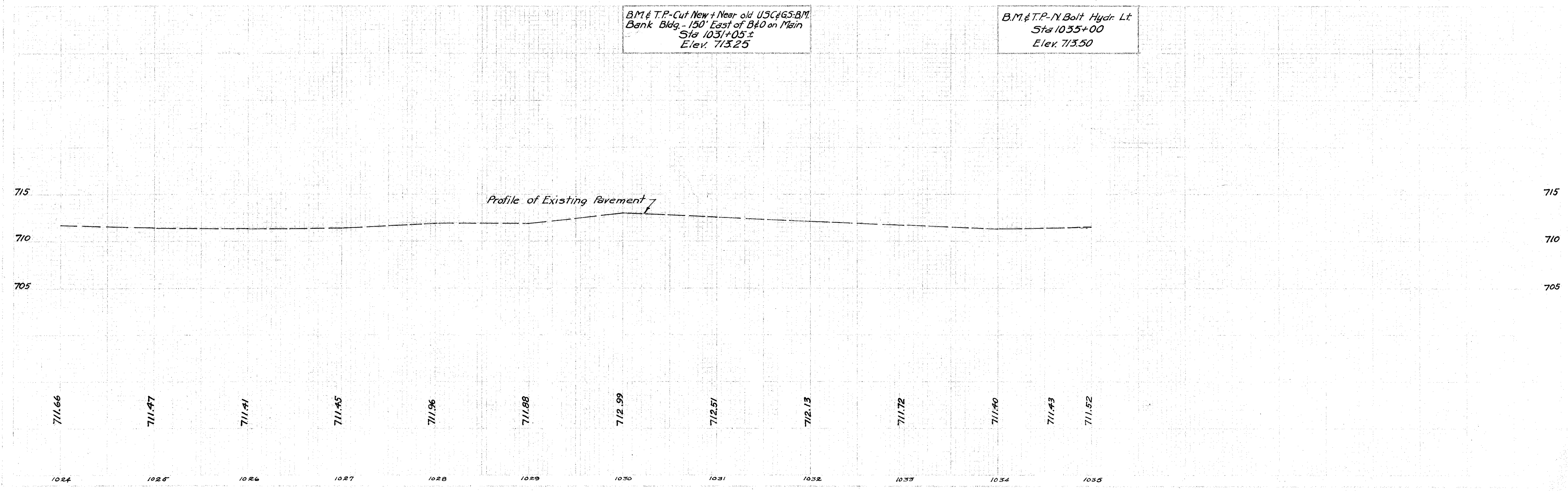
EXTRA PAVEMENT "P"

Ref. No.	T-35 Type 'C' Sq. Yds.	B-35 Sq. Yds.	T-30 Sq. Yds.
12-P	367	295	367
13-P	29		29
14-P	550	460	550
<b>Total</b>	<b>946</b>	<b>755</b>	<b>946</b>

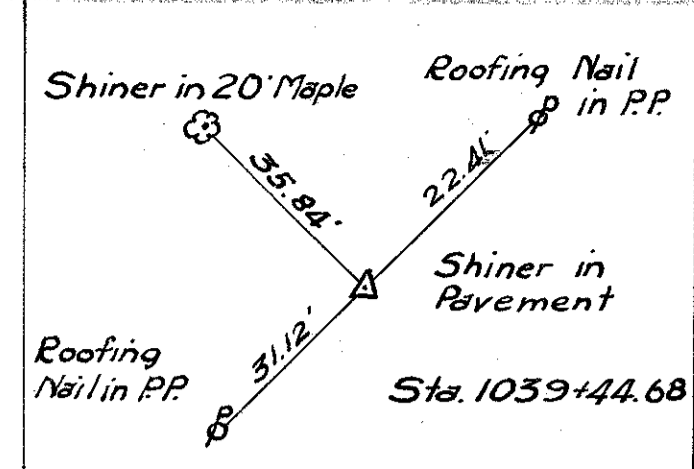
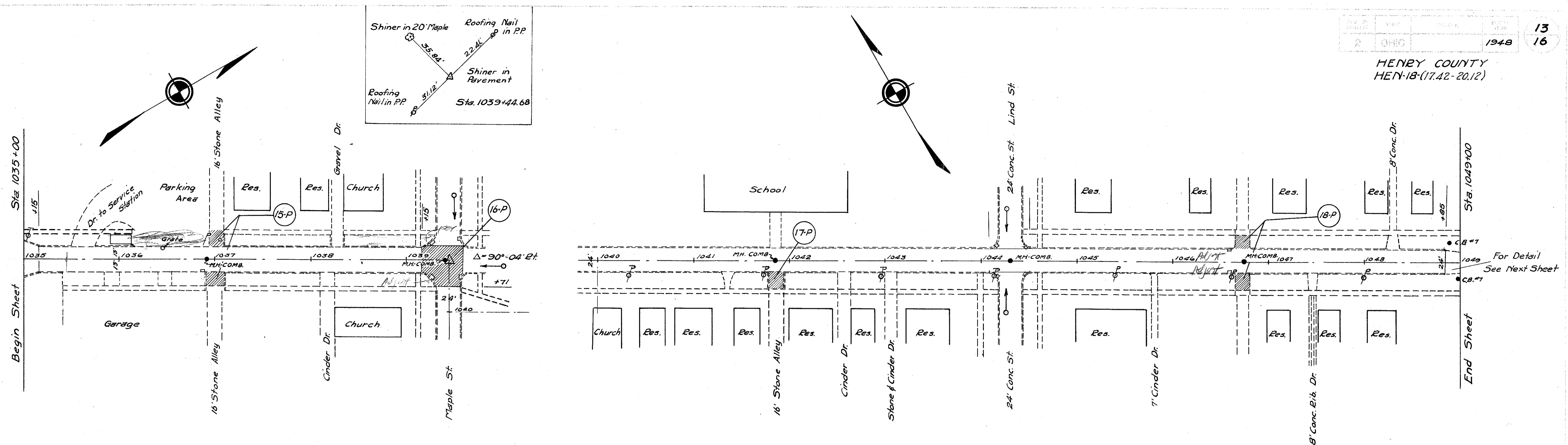
New Pavement.  
 Existing Pavement to be resurfaced.

B.M. & T.P. - Cut New + Near old USC & GS B.M.  
Bank Bldg. - 150' East of B&O on Main  
Sta 1031+05 ±  
Elev. 713.25

B.M. & T.P. - N. Bolt Hydr. Lt.  
Sta 1035+00  
Elev. 713.50



HENRY COUNTY  
HEN-18-(17.42-20.12)



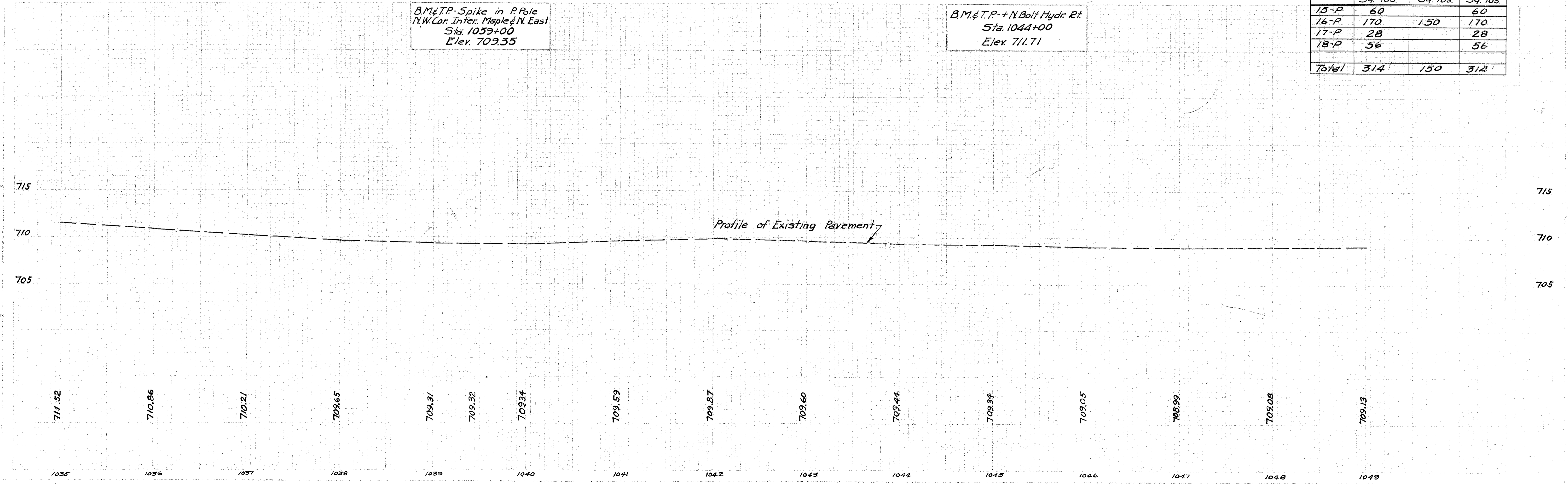
New Pavement  
 Existing Pavement to be resurfaced.

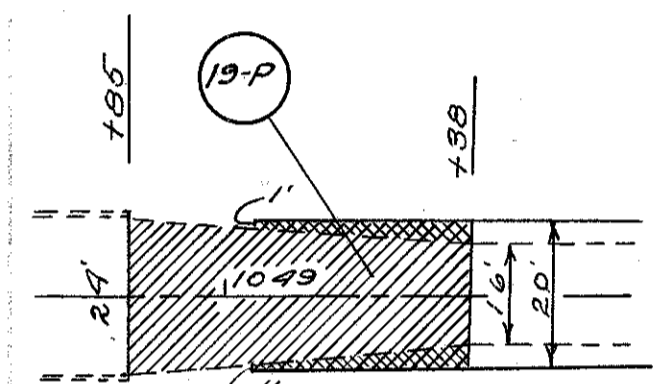
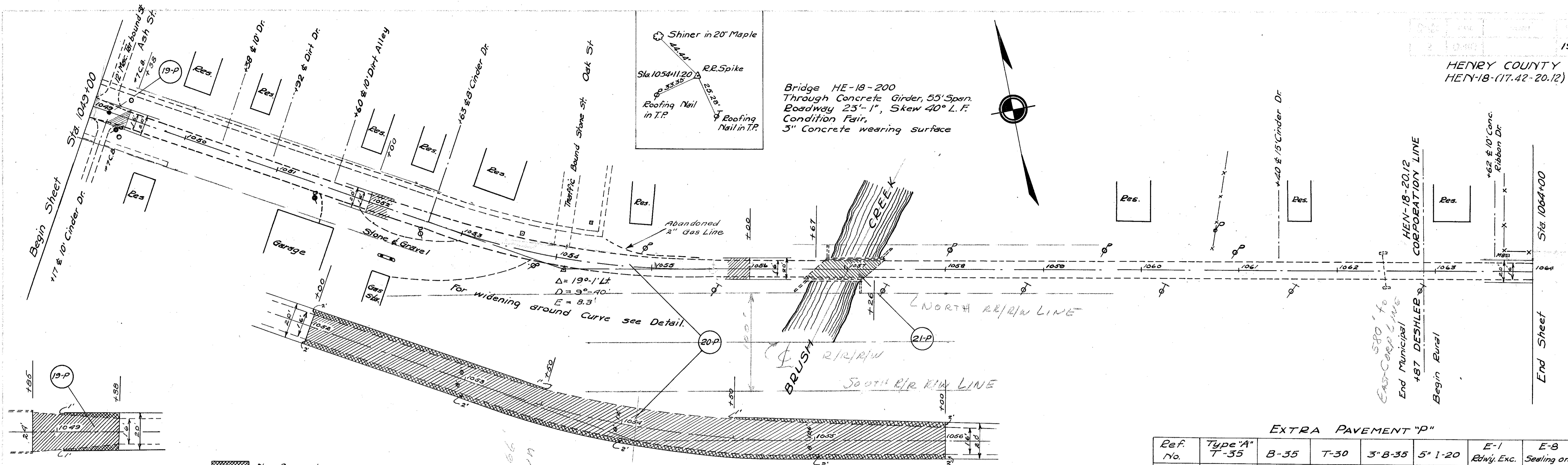
EXTRA PAVEMENT-"P"

Ref. No.	T-35 Type "C" Sq. Yds.	B-35 Sq. Yds.	T-30 Sq. Yds.
15-P	60		60
16-P	170	150	170
17-P	28		28
18-P	56		56
<b>Total</b>	<b>314</b>	<b>150</b>	<b>314</b>

B.M. & T.P. - Spike in P.Pole  
N.W. Cor. Inter. Maple & N. East  
Sta. 1039+00  
Elev. 709.35

B.M. & T.P. - N. Bolt Hydr. Pt.  
Sta. 1044+00  
Elev. 711.71





New Pavement.  
 Existing Pavement to be resurfaced.

Detail: Showing widening Sta 1052+00 to Sta 1056+00.

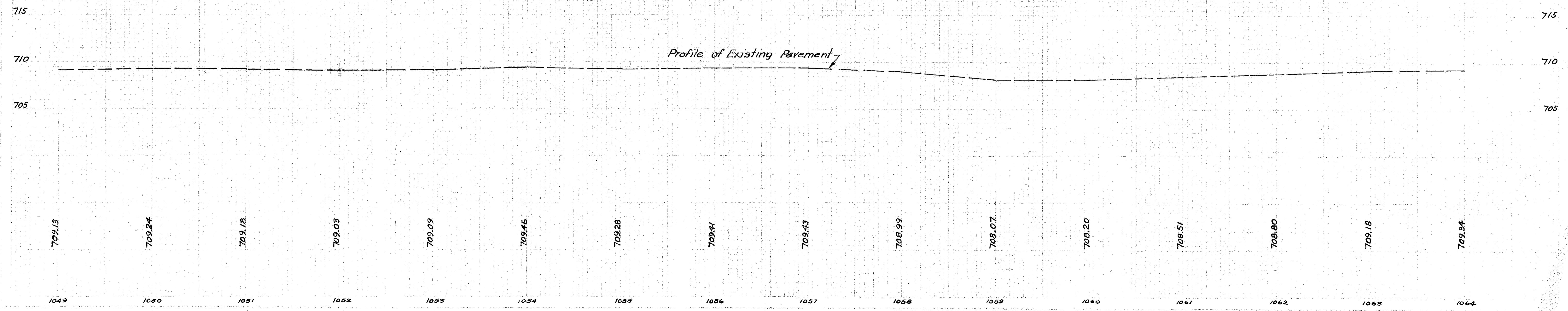
EXTRA PAVEMENT "P"

Ref. No.	Type "A"	B-35	T-30	3" B-35	5" 1-20	E-1 Rdwy. Exc.	E-8 Sealing only
	Sq. Yds.	Sq. Yds.	Sq. Yds.	Sq. Yds.	Sq. Yds.	Cu. Yds.	Lin. Ft.
19-P	129	129	118	13	15	3.5	70
20-P	918	918	796	158	190	44	700
21-P	151	151	151				
Total	1198	1198	1065	171	205	47.5	770

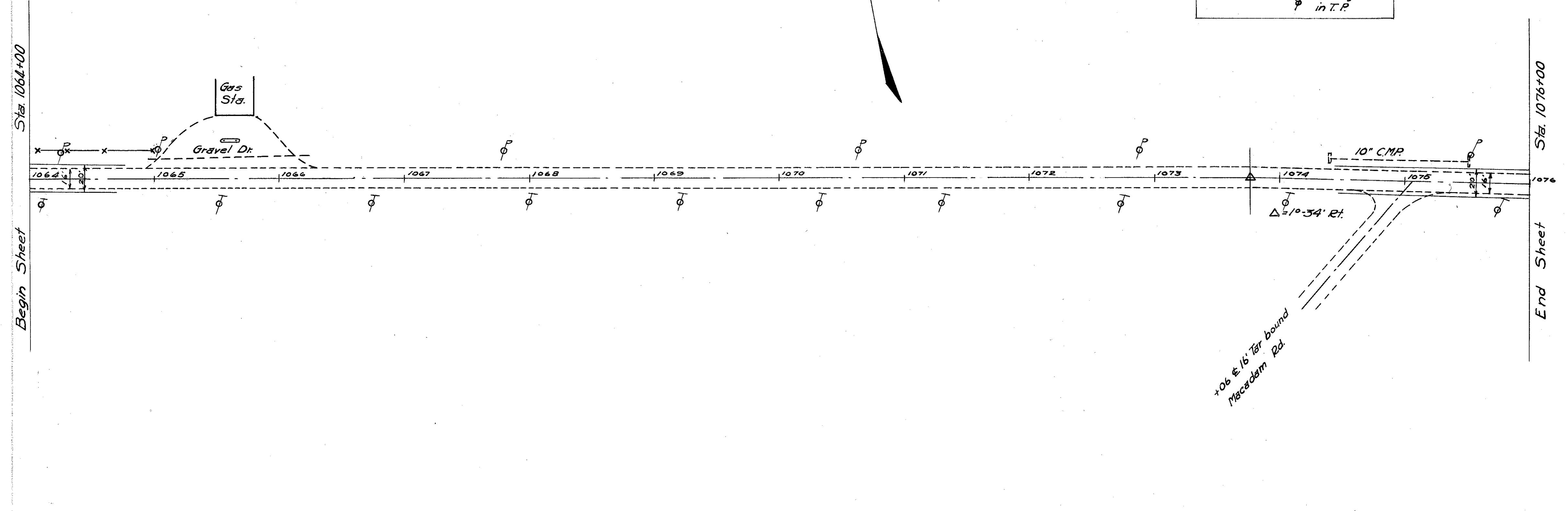
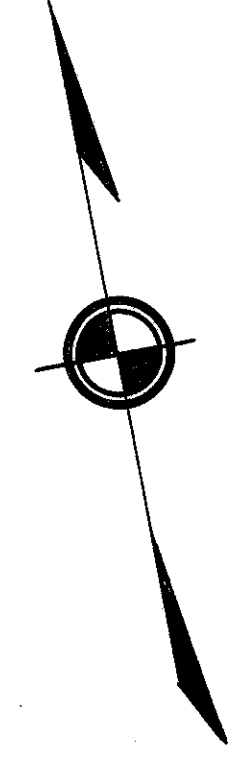
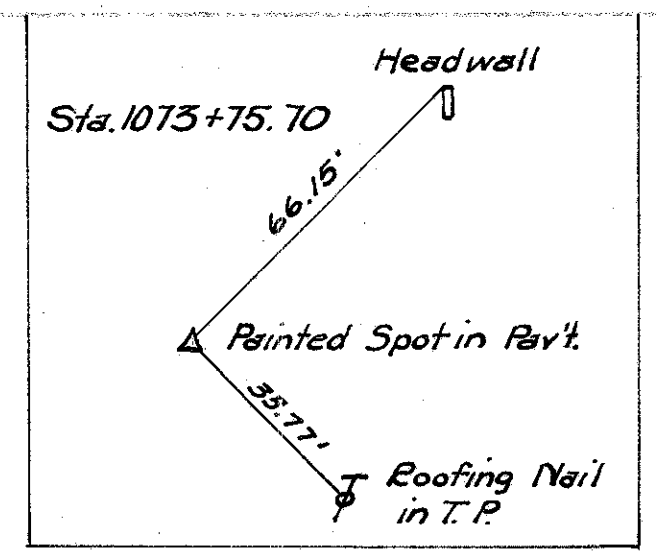
B.M. & T.P. + 5a. Bolt in Hyd. Lt.  
Sta. 1049+00  
Elev. 710.87

B.M. & T.P. x N. End W. Abut.  
Concrete Bridge  
Sta 1057+00

B.M. & T.P. Spike in T.P. Rt.  
Sta. 1062+90  
Elev. 708.89



HENRY COUNTY  
HEN-18-(17.42-20.12)

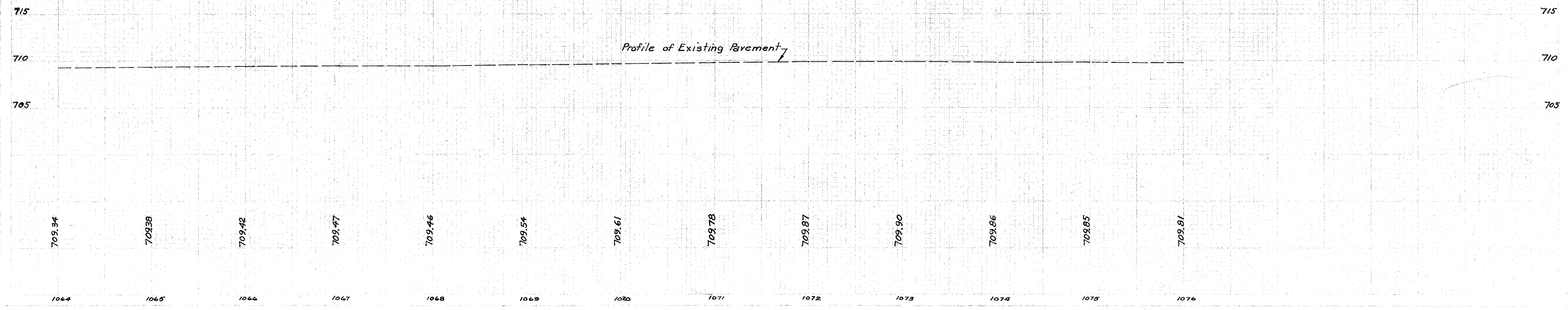


B.M. & T.P. Spike in T.P. Lt.  
Sta. 1070+75  
Elev. 709.54

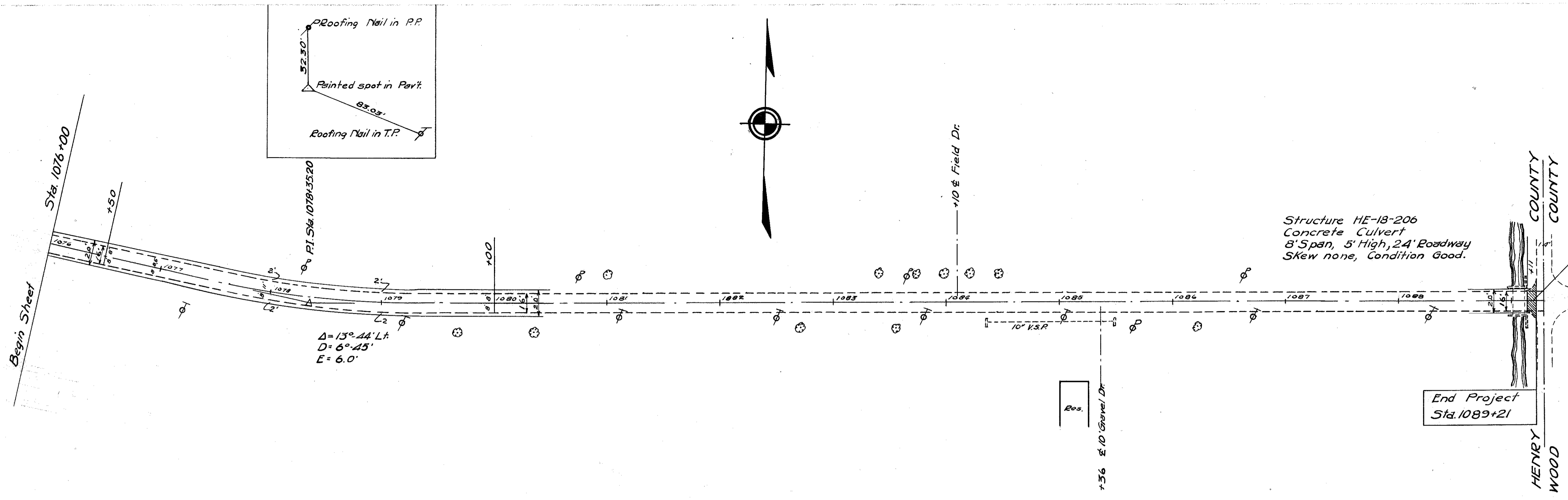
CASTINGS TO BE RAISED

Station	Distance	Kind or Type	Remarks
1004+56	16' Rt & Lt.	Curb & Gutter Inlet	No work required
1005+56	16' Rt & Lt.	" " "	" " "
1009+32	16' Rt & Lt.	" " "	" " "
1010+57	16' Rt & Lt.	" " "	" " "
1014+30	16' Rt & Lt.	" " "	" " "
1015+31	16' Rt & Lt.	" " "	" " "
1019+03	16' Rt & Lt.	" " "	" " "
1019+92	16' Rt & Lt.	" " "	" " "
1024+28	16' Rt & Lt.	" " "	" " "
1024+53	Center	Manhole	To Be Raised
1024+78	Rt. & Lt.	Gutter Inlet	" " "
1026+30	Rt.	Water Valve	To Be Raised by the Village
1026+84	Rt.	Gutter Inlet	To Be Raised
1026+87	Lt.	" " "	" " "
1026+86	Rt.	Water Valve	To be Raised by the Village
1026+97	Center	Manhole	To be Raised
1027+03	Rt. & Lt.	Gutter Inlet	" " "
1030+70	Center	Manhole	To be Raised
1032+20	26' Rt.	" " "	No work required
1034+26	21' Rt.	Water Valve	To be Raised by the Village
1034+36	Rt. & Lt.	Gutter Inlet	To be Raised
1034+60	15' Rt.	Manhole	To be Raised
1034+79	Rt.	Gutter Inlet	" " "
1036+46	Lt.	" " "	No work required
1036+88	Rt.	Curb & Gutter Inlet	No work required
1036+94	Rt.	" " "	" " "
1036+92	Center	Manhole	To be Raised
1037+05	20' Lt.	Valve Box	To be Raised by the Village
1039+25	20' Rt & Lt.	Curb & Gutter Inlet	No work Required
1039+43	Center	Manhole	To be Raised
1039+61	Rt. & Lt.	Curb & Gutter Inlet	No work required
1041+85	Center	Manhole	To be Raised
1044+15	13' Lt. & Rt.	Curb & Gutter Inlet	No work required
1044+31	Center	Manhole	To be Raised
1044+43	Rt. & Lt.	Curb & Gutter Inlet	No work required
1046+62	Rt. & Lt.	" " "	" " "
1046+74	Center	Manhole	To be raised
1049+17	Center	" " "	" " "
Total:			10 Casting to be raised by the Contractor 9 Gutter Inlets to be raised by Contractor.

Profile of Existing Pavement



HENRY COUNTY  
HEN-18-(17.42-20.12)



Structure HE-18-206  
Concrete Culvert  
8' Span, 5' High, 24' Roadway  
Skew none, Condition Good.

End Project  
Sta. 1089+21

EXTRA PAVEMENT "P"

Ref. No.	T-35 Type "A" Sq. Yds.	B-35 Sq. Yds.	T-30 Sq. Yds.
22-P	27	10	27
Total	27	10	27

New Pavement.  
 Existing Pavement to be resurfaced.

Detail: Typical Section of Adjoining Pavement  
Tar Bound Macadam

B.M. & T.P. - Spike in P.P. Lt.  
Station 1078+32  
Elev. 708.43

B.M. & T.P. - N. End Hdwr. - E. Dr.  
Station 1085+50  
Elev. 709.30

