

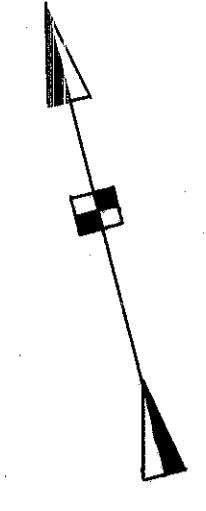
HEU-18-17.41-18.94

R/W PLAN SEC. 15, 16, 21, 22
HENRY COUNTY

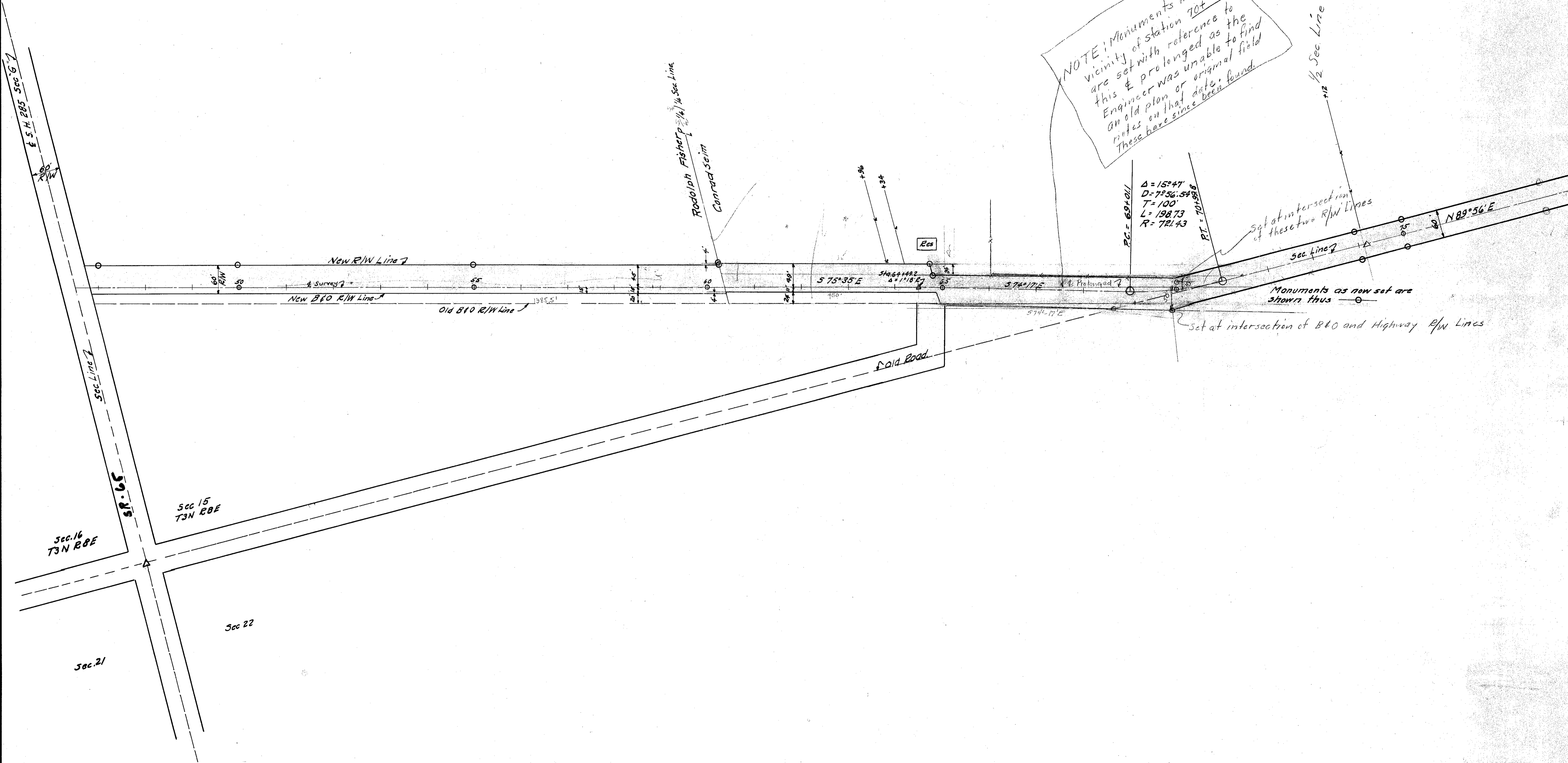
IN THE MILE WEST OF DESHLER
BETWEEN SECS 15 & 22 TWP.
BARTLOW TWP.

no new R/W planned
JJP
3/20/44

Scanned
Nov 1997



NOTE: Monuments in the vicinity of station 70+ are set with reference to this & prolonged as the Engineer was unable to find an old plan or original field notes on that date. These have since been found.



R2018 79 0-5