

#2030

FED. RD. DIST. NO.	STATE	FED. AID PROJECT	FISCAL YEAR
10	OHIO		1924

ICH. 225 HENRY SEC. D COUNTY

STATE OF OHIO
DEPARTMENT OF HIGHWAYS AND PUBLIC WORKS
DIVISION OF HIGHWAYS
BUREAU OF CONSTRUCTION

DESHLER-FINDLAY ROAD

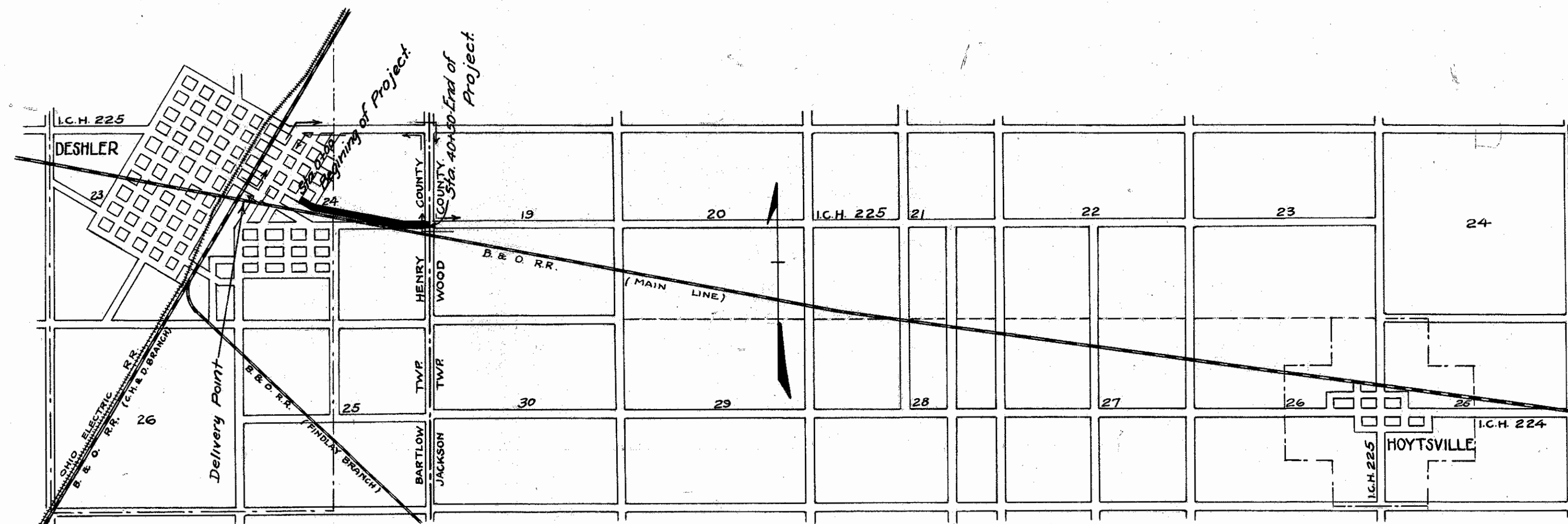
I.C.H. No. 225 SEC. D PET. No. 4947

HENRY COUNTY

BARTLOW TWP. JULY 1924

CONVENTIONAL SIGNS

- State line -----
- County line -----
- Township line -----
- Section line -----
- Property line not fenced -----
- Center line -----
- City or Village line -----
- Fence ----- x ----- x
- Telephone or Telegraph TTTTTT
- Steam railroad -----
- Electric line -----
- Guard rail -----



INDEX

Title Page	p. 1
Typical Cross-Section	p. 2
Plans and Profiles	p. 3-4
Cross Sections	p. 5-7
Structural Plans	p. 8-10
Summary Sheet	p. 11

The Standard Specifications of the State of Ohio, Division of Highways in force on date of contract, will govern this improvement.

LOCATION PLAN



PORTION TO BE IMPROVED
DETOURS SHOWN THUS

We the Commissioners of Henry County hereby approve these plans and certify that the right-of-way, fifty feet wide is available for the construction, maintenance and repair of the above highway.

A.B. Jennings
Grant Beam
Charles Wahl
Date: 7/9, 1924 County Commissioners.

SCALES

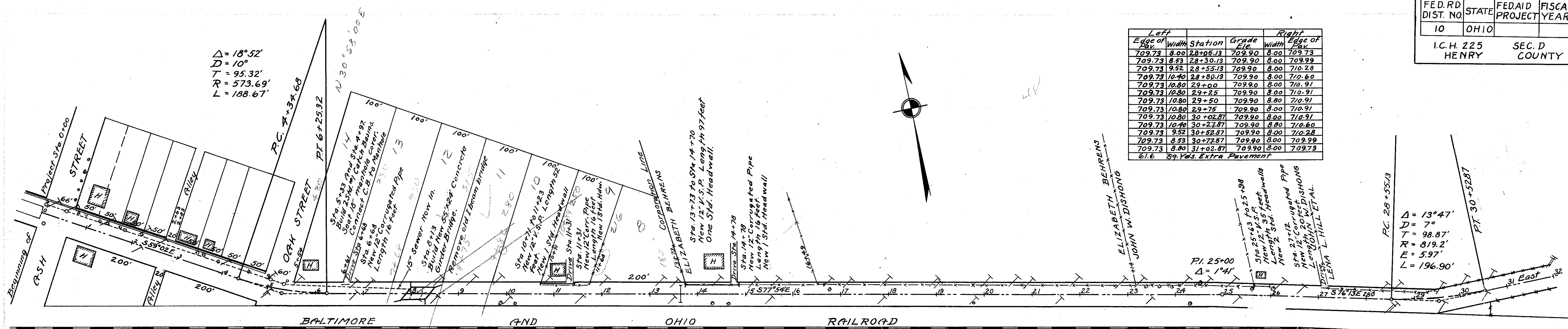
- Plan 1"=100'
- Profile (Vertical) 1"=10'
- Profile (Horizontal) 1"=100'
- Cross Sections 1"=5'



I hereby approve these plans and declare that the making of this improvement will require closing to traffic of the highway and that detours will be provided as shown on the plans and estimates.

Approved: J.W. Harper
Date: July 9, 1924 Resident Engineer.
Approved: J.M. Mahan
Date: 8-13-24 Division Engineer.
Approved: G.F. Pillsinger
Date: 9/8/24 State Highway Engineer.
Approved: L.A. Boulay
Date: 9/8/24 Director of Highways & Public Works.

FED. RD DIST. NO.	STATE	FED. AID PROJECT	FISCAL YEAR	3/11
10	OHIO			
I.C.H. 225 HENRY		SEC. D COUNTY		



Left			Right		
Edge of Pav.	Width	Station	Grade	Width	Edge of Pav.
709.73	8.00	28+05.13	709.90	8.00	709.73
709.73	8.52	28+30.13	709.90	8.00	709.99
709.73	9.52	28+55.13	709.90	8.00	710.28
709.73	10.40	28+80.13	709.90	8.00	710.60
709.73	10.80	29+00	709.90	8.00	710.91
709.73	10.80	29+25	709.90	8.00	710.91
709.73	10.80	29+50	709.90	8.00	710.91
709.73	10.80	29+75	709.90	8.00	710.91
709.73	10.80	30+00.87	709.90	8.00	710.91
709.73	10.40	30+27.87	709.90	8.00	710.60
709.73	9.52	30+52.87	709.90	8.00	710.28
709.73	8.52	30+77.87	709.90	8.00	709.99
709.73	8.00	31+02.87	709.90	8.00	709.73
61.6 Sq. Yds. Extra Pavement					

$\Delta = 18^\circ 52'$
 $D = 10'$
 $T = 95.32'$
 $R = 573.69'$
 $L = 188.67'$

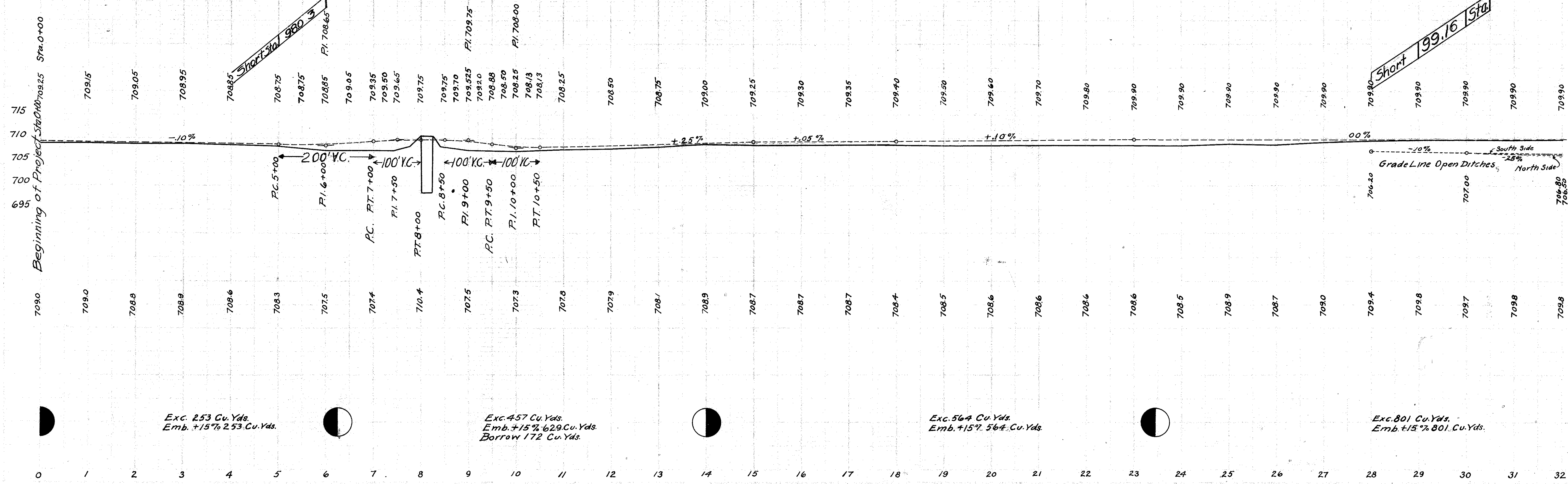
$\Delta = 13^\circ 47'$
 $D = 7'$
 $T = 98.87'$
 $R = 819.2'$
 $E = 5.97'$
 $L = 196.90'$

Left			Right		
Edge of Pav.	Width	Station	Grade	Width	Edge of Pav.
708.70	8.00	3+84.68	708.87	8.00	708.70
708.67	8.75	4+04.68	708.84	8.00	708.93
708.65	10.00	4+24.68	708.82	8.00	709.23
708.62	11.43	4+44.68	708.79	8.00	709.54
708.60	12.00	4+64.68	708.77	8.00	709.86
708.58	12.00	5+09.68	708.75	8.00	709.84
708.57	12.00	5+34.68	708.74	8.00	709.83
708.60	12.00	5+59.68	708.77	8.00	709.86
708.64	12.00	5+75.32	708.81	8.00	709.90
708.68	11.43	6+00.32	708.85	8.00	709.60
708.76	10.16	6+25.32	708.93	8.00	709.33
708.88	8.75	6+50.32	709.05	8.00	709.14
709.11	8.00	6+75.32	709.28	8.00	709.11
97.2 Sq. Yds. Extra Pavement					

Note: In case both types are used, Conc. Sta. 0+00 to 13+73 Mac. Sta. 13+73 to 40+50

B.M. Sta. 13+70
 N.W. corner of north spandrel wall of RR culvert 50' south of \pm Ele. 708.58

Note: Grade line shown is crown of finished pavement, type B + 0.1' B below Type A



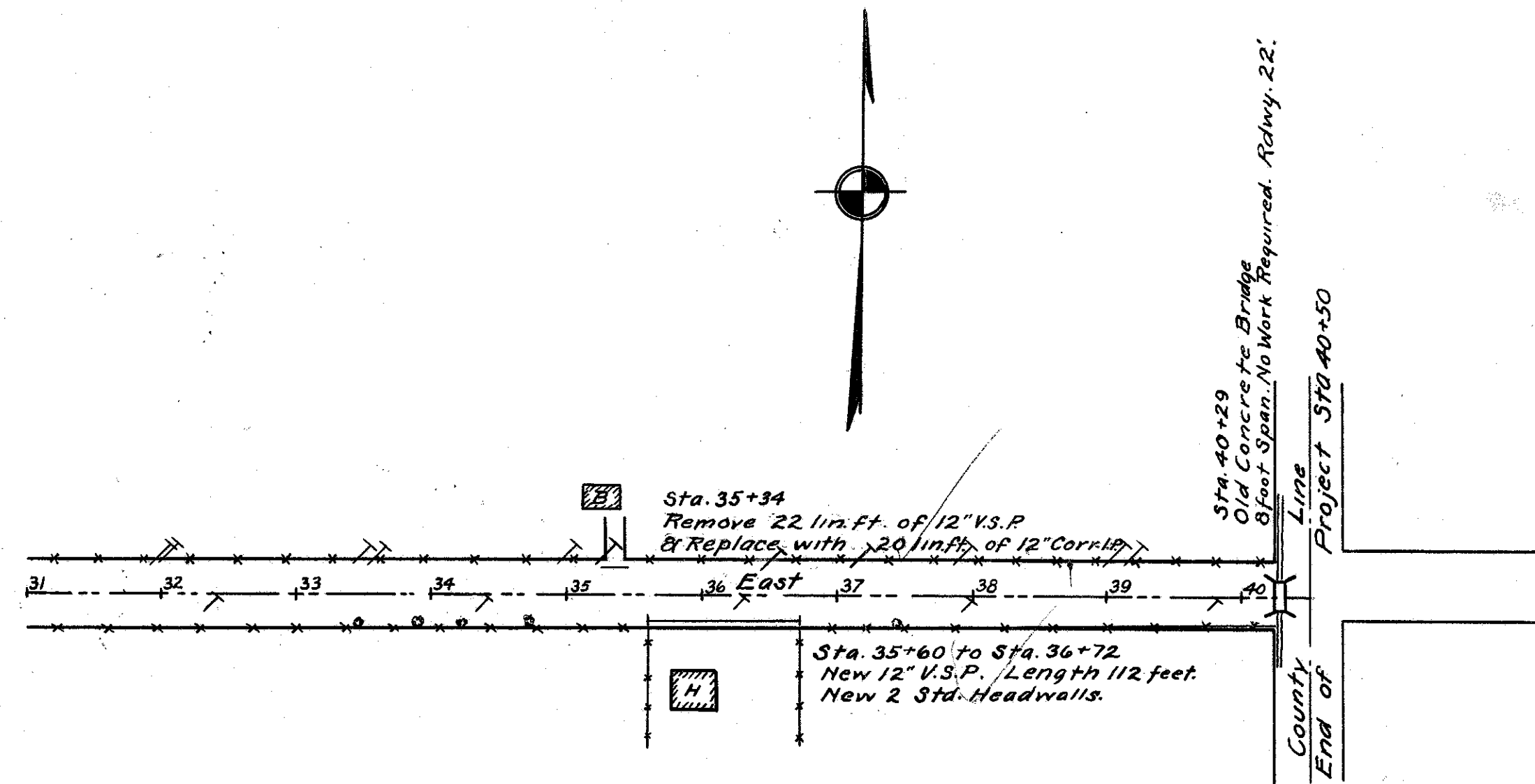
Exc. 253 Cu. Yds.
 Emb. +15% 253 Cu. Yds.

Exc. 457 Cu. Yds.
 Emb. +15% 629 Cu. Yds.
 Borrow 172 Cu. Yds.

Exc. 564 Cu. Yds.
 Emb. +15% 564 Cu. Yds.

Exc. 801 Cu. Yds.
 Emb. +15% 801 Cu. Yds.

FED. RD. DIST. NO.	STATE	FED AID PROJECT	FISCAL YEAR
10	OHIO		
I.C.H. 225 HENRY		SEC. D COUNTY	



BM. Sta. 40+25 (U.S.C. & G.S. b.m.)
 in north end of R.R. concrete
 culvert, red metal disc, 200' R. &
 Ele. 711.509

Note: Grade line shown is crown of finished
 pavement Type B & type A 0.1' below.

