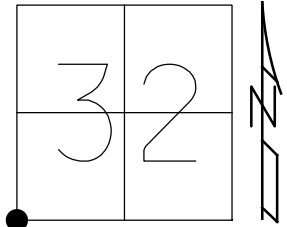


O.D.O.T. DISTRICT 2 SURVEY OFFICE (USE ONLY)

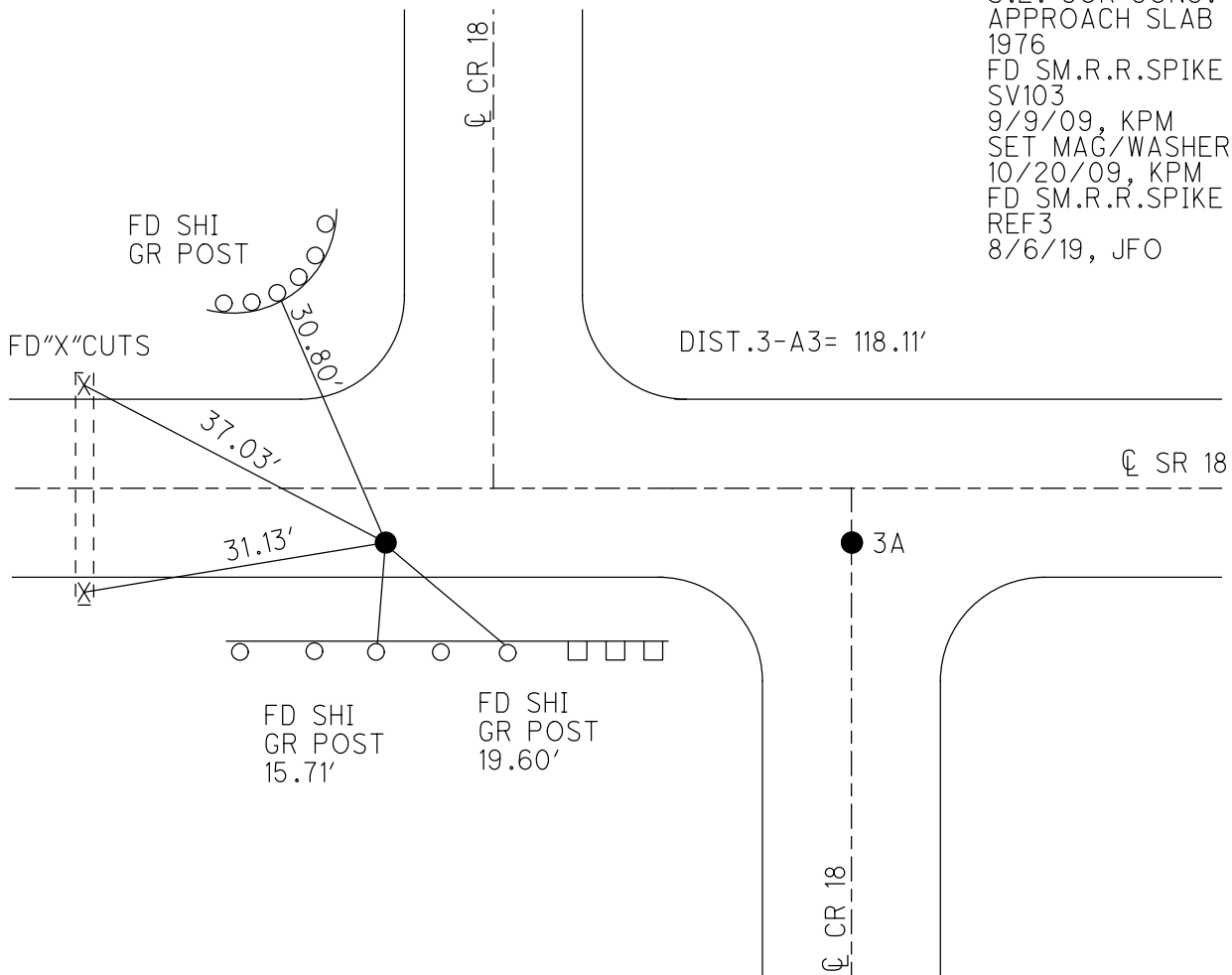
PERSONNEL _____ REFERENCE NO. 3 SHEET 4 OF 29
 NOTES MOSER DATE 9/9/09 ROUTE SR 18
 H.C. GOLDBERG WEATHER CLOUDY COUNTY HENRY
 R.C. MOSER TEMP. 80° TOWNSHIP FLATROCK
 DWG BY NIESE PID NO PID SECTION 32
 T 4 N R 6 E

TYPE MONUMENT SM.R.R.SPIKE
 ON SURFACE - ~~BELOW~~ ON
 OFFSET ϕ PAVEMENT 3.3' ~~LT~~ : RT
6.2' TO RT EDGE PAVEMENT
 STATION: 48+05

HORZ.DATUM: NAD83(2011) GEOID: 2012A
 GRID: NORTHING: 582597.155 EASTING: 1498343.340



RECORD:
 FD "X" IN
 S.E. COR CONC.
 APPROACH SLAB
 1976
 FD SM.R.R.SPIKE
 SV103
 9/9/09, KPM
 SET MAG/WASHER
 10/20/09, KPM
 FD SM.R.R.SPIKE
 REF3
 8/6/19, JFO



O.D.O.T. DISTRICT 2 SURVEY OFFICE (USE ONLY)

PERSONNEL

REFERENCE NO. 3

SHEET 4 OF 29

NOTES MOSER

DATE 09-09-09

ROUTE SR 18

H.C. GOLDBERG

WEATHER CLOUDY

COUNTY HENRY

R.C. MOSER

TEMP. +80°

TOWNSHIP Flatrock- Pleasant

SECTION 32

TYPE MONUMENT PK

T 3 N R 6 E
4

ON SURFACE - ~~BELOW~~ ON SURFACE

31 FLATROCK	32 T4N
PLEASANT 6	T3N 5



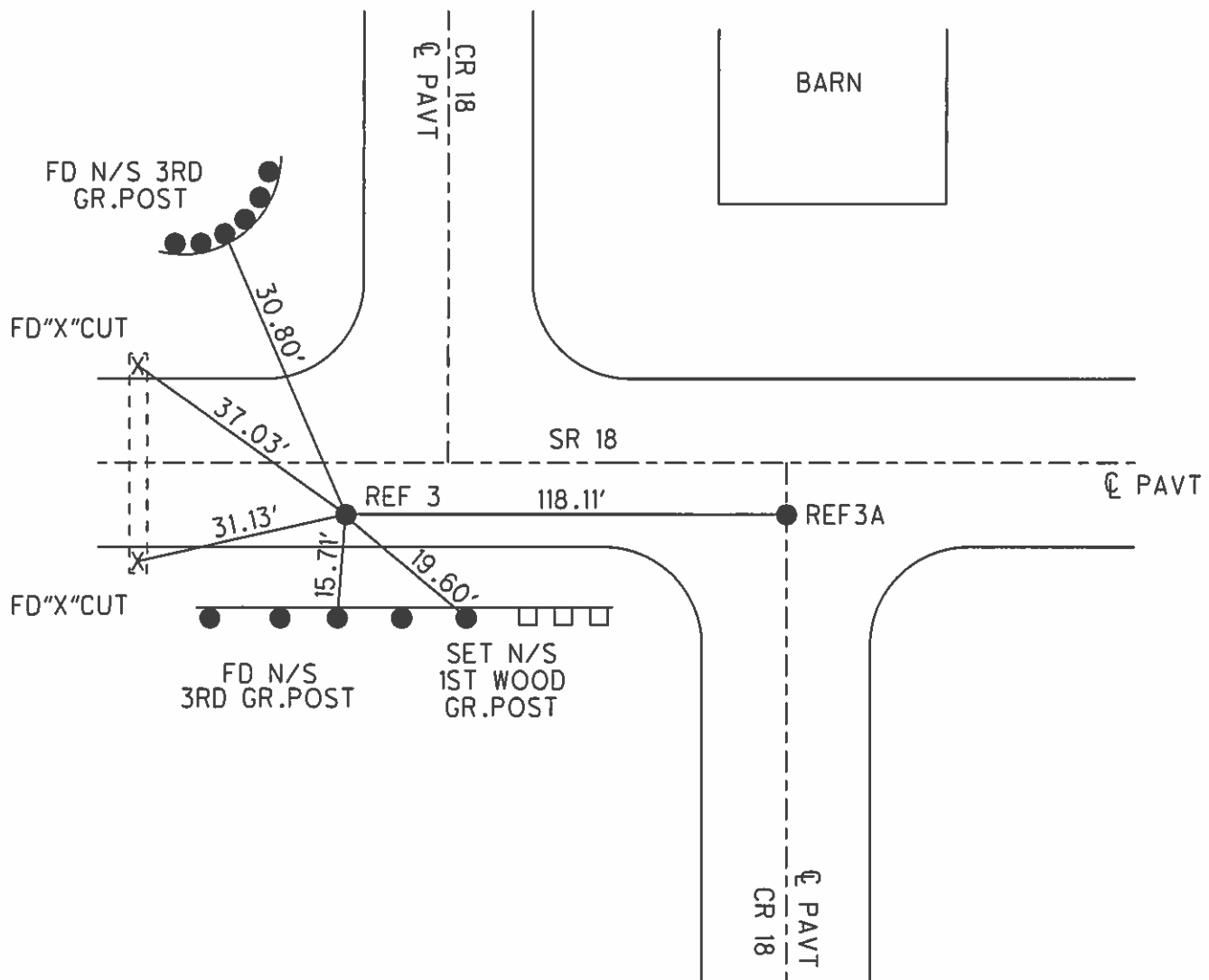
~~LEFT~~ - Q PAVT - RIGHT 3.3'

6.2' TO RT. EDGE PAVEMENT

S.L.M. 48 + 05 (SV 103)

Grid: Northing: 582597.142 Easting: 1498343.277

RECORD: FD. "x" in S.E. Corner Concrete
Approach Slab S.W. Cor 32 Flatrock Henry Co. 1976
Set Mag/WASHER 10-20-09 KPM



O.D.O.T. DISTRICT 2 SURVEY OFFICE

PERSONNEL

REFERENCE NO. 3-3A

SHEET 3 OF 11

NOTES VAD Dussen

H.C. HUSS

R.C. MOSEK

DATE 5-30-95

WEATHER CLOUDY

TEMP. +55°F

ROUTE S.R. 18

COUNTY HENRY

TOWNSHIP FLAT ROCK - PLEASANT

SECTION 32-5

T. 3 N R. 6 E

T. 4 N

31	32
6	5



TYPE MONUMENT P.K. - 5m. SPK

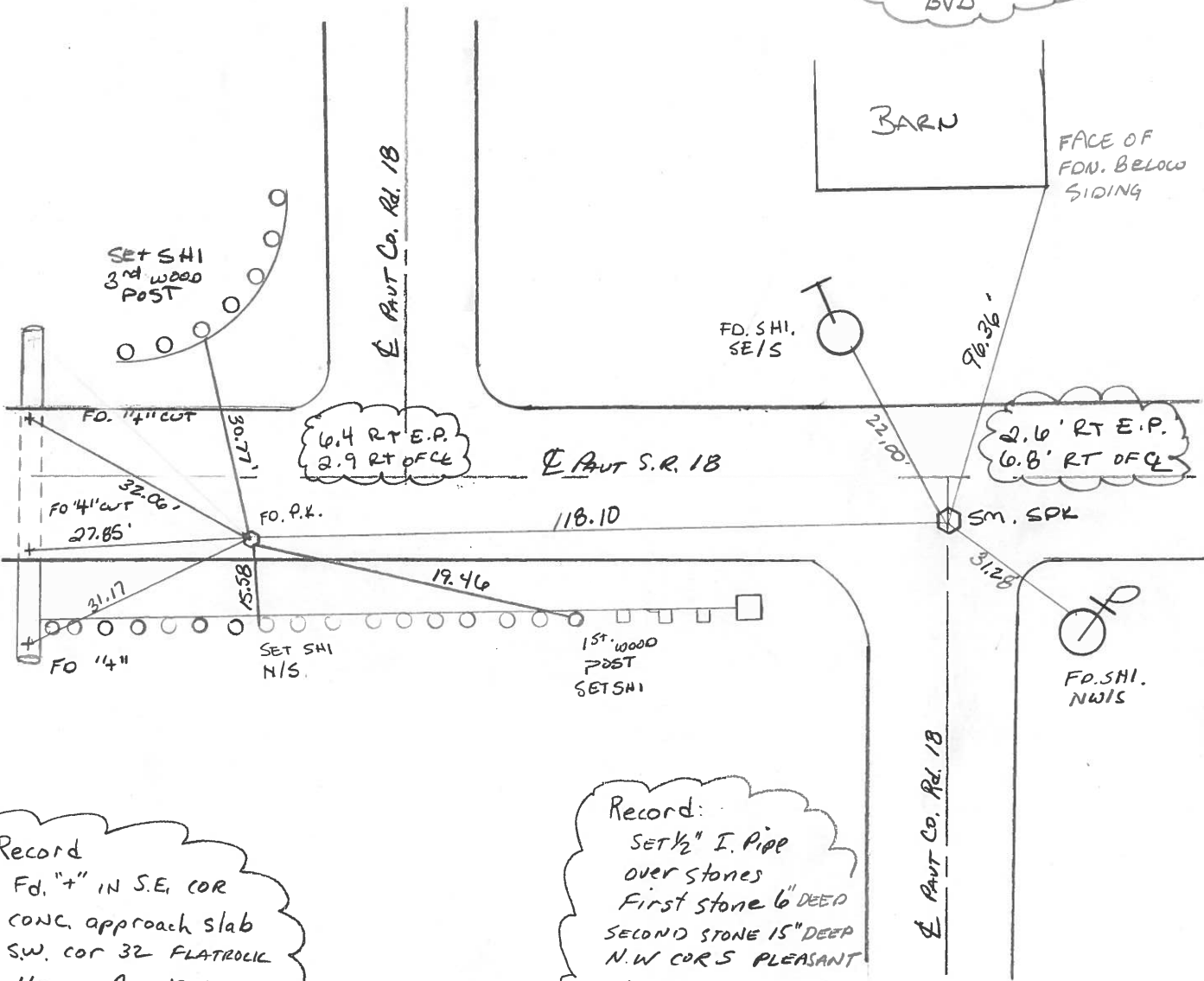
ON SURFACE - BELOW YES

LEFT-☉ PAV'T. - RIGHT See Below

SEE TO BELOW EDGE PAVEMENT

S.L.M. 48+05.7 - 49+23.5

SET PK & WASHERS
8-28-95
BVD



Record
Fd. "+" IN S.E. COR
CONC. approach slab
S.W. cor 32 FLATROCK
Henry Co. 1976

Record:
SET 1/2" I. Pipe
over stones
First stone 6" DEEP
SECOND STONE 15" DEEP
N.W COR 5 PLEASANT
HENRY CO. 1976

O.D.O.T. DISTRICT 2 SURVEY OFFICE

PERSONNEL

REFERENCE NO. 3 - 3A

SHEET OF

NOTES BARNHISEL

H.C. Loehrke

R.C. SOCKMAN

DATE Aug 11, 1986

WEATHER SUNNY

TEMP. +75°

ROUTE SR 18

COUNTY HENRY

TOWNSHIP FLATROCK - PLEASANT

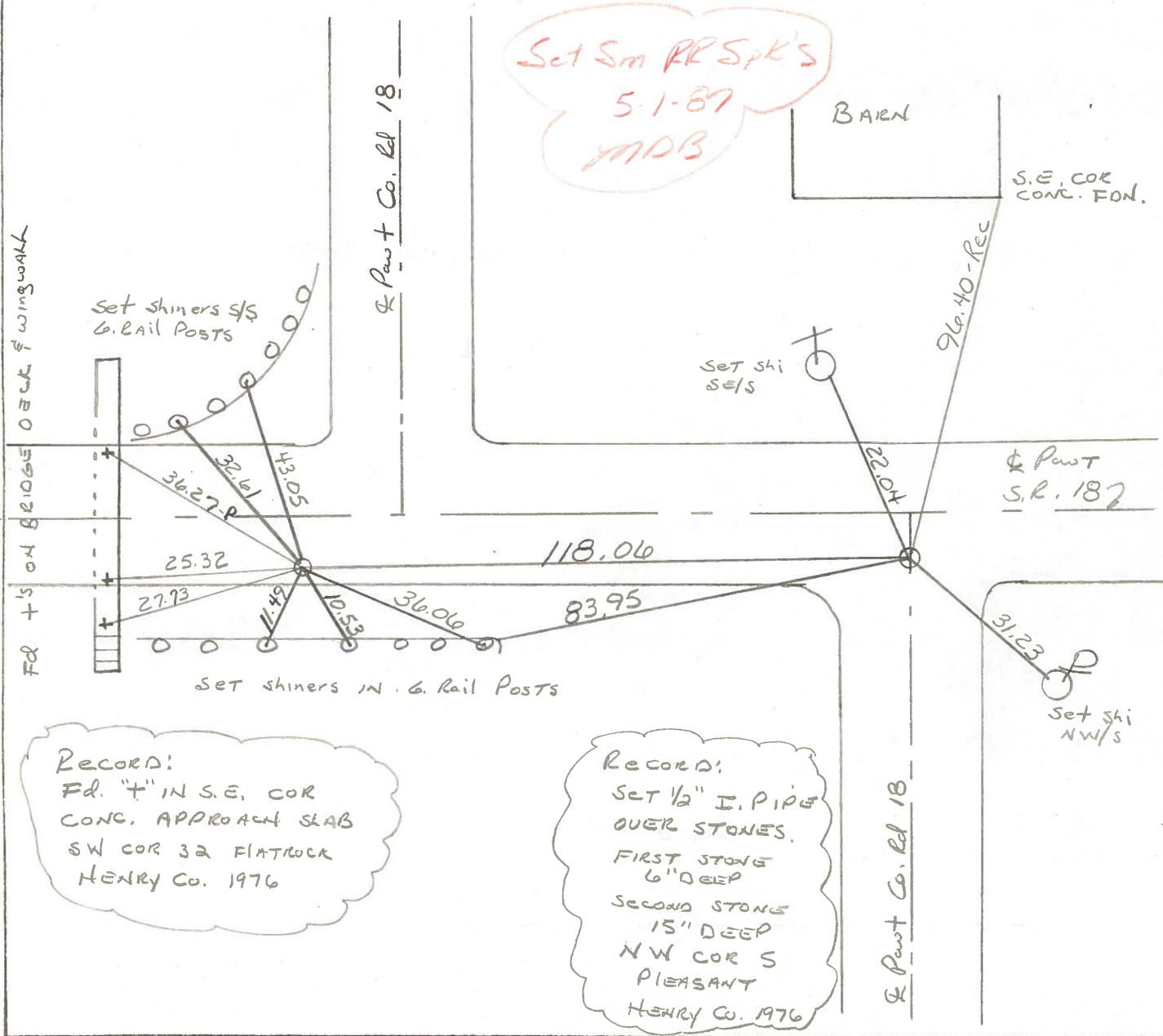
SECTION 32 - 5

T3 NR 6 E

T4 N	
31	32
6	5



TYPE MONUMENT P.K. - 1/2" PIPE
 ON SURFACE - BELOW Surface - 2" Below
~~LEFT~~ - & PAV'T. - RIGHT 9.5' - 7.0'
TO EDGE PAVEMENT
 S.L.M. 47+97 - 49+15



Set Sm RR Spk's
5-1-87
MAB

RECORD:
Fd. "T" IN S.E. COR
CONG. APPROACH SLAB
SW COR 32 FLATROCK
HENRY Co. 1976

RECORD:
SET 1/2" I. PIPE
OVER STONES.
FIRST STONE
6" DEEP
SECOND STONE
15" DEEP
NW COR S
PLEASANT
HENRY Co. 1976

HENRY COUNTY ENGINEERS' OFFICE CORNER STONE RECOVERY PROGRAM

Sht. 2 of
S.R. 18

TOWNSHIP PLEASANT

DATE 6-15-76

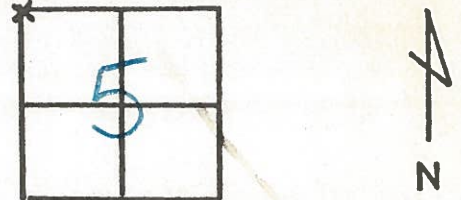
SECTION 5

WEATHER CLEAR & WARM

T3N, R6E

TEMP _____

PERSONNEL J.G.
B.B.
M.S.
S.S.



NOTE:

FOUND STONE OVER STONE. FIRST STONE WAS 6" DEEP AND SECOND STONE IS 15" DEEP. PLACED 1/2" X 4" IRON PIPE OVER TOP CTR. OF STONE. STONE IS 2.75' NORTH OF SOUTH EDGE S.R. 18. P.K.'S 6' N & 6' E.

Copied:

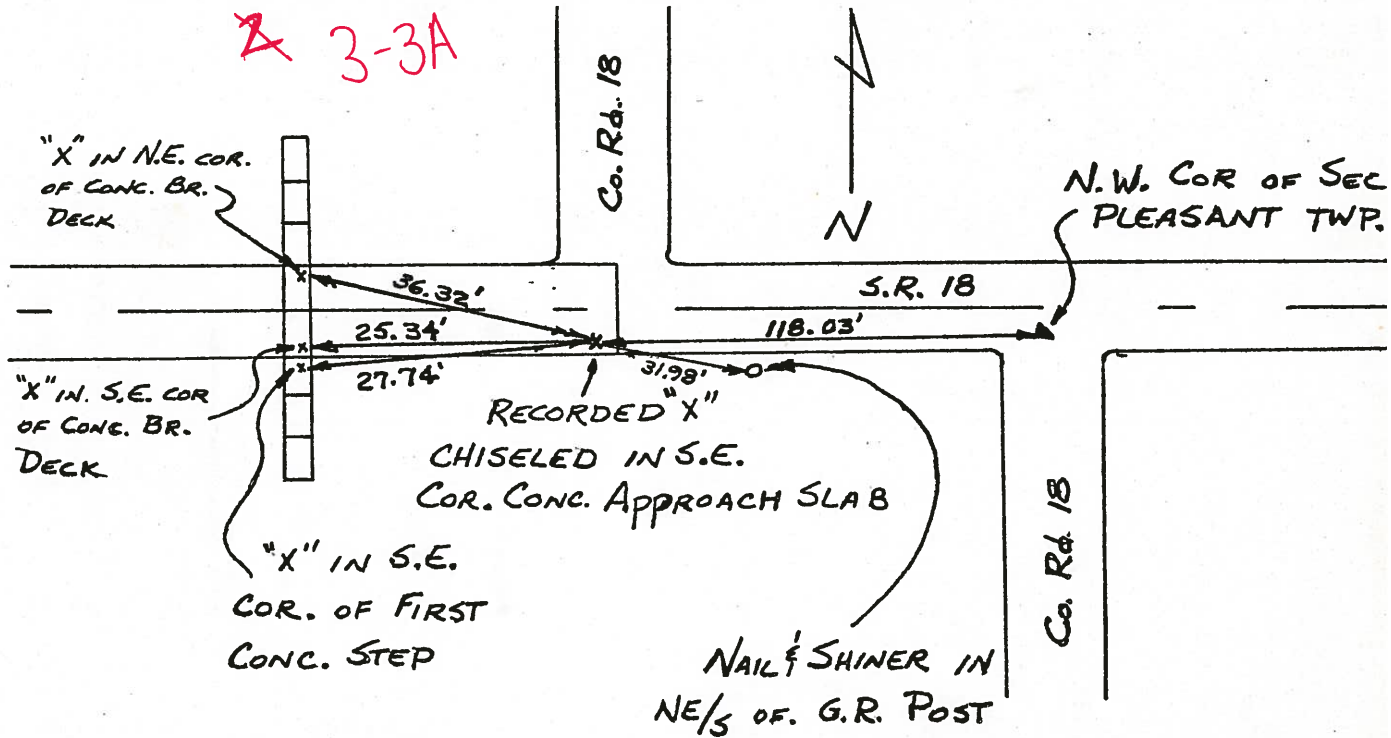
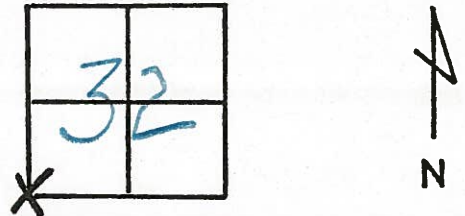
Painted: 8-76

HENRY COUNTY ENGINEER'S OFFICE
CORNER STONE RECOVERY PROGRAM

Sht. 1 of
S. R. 18

TOWNSHIP FLATROCK
SECTION 32
T4N, R6E
PERSONNEL JG
BB
MS
SS

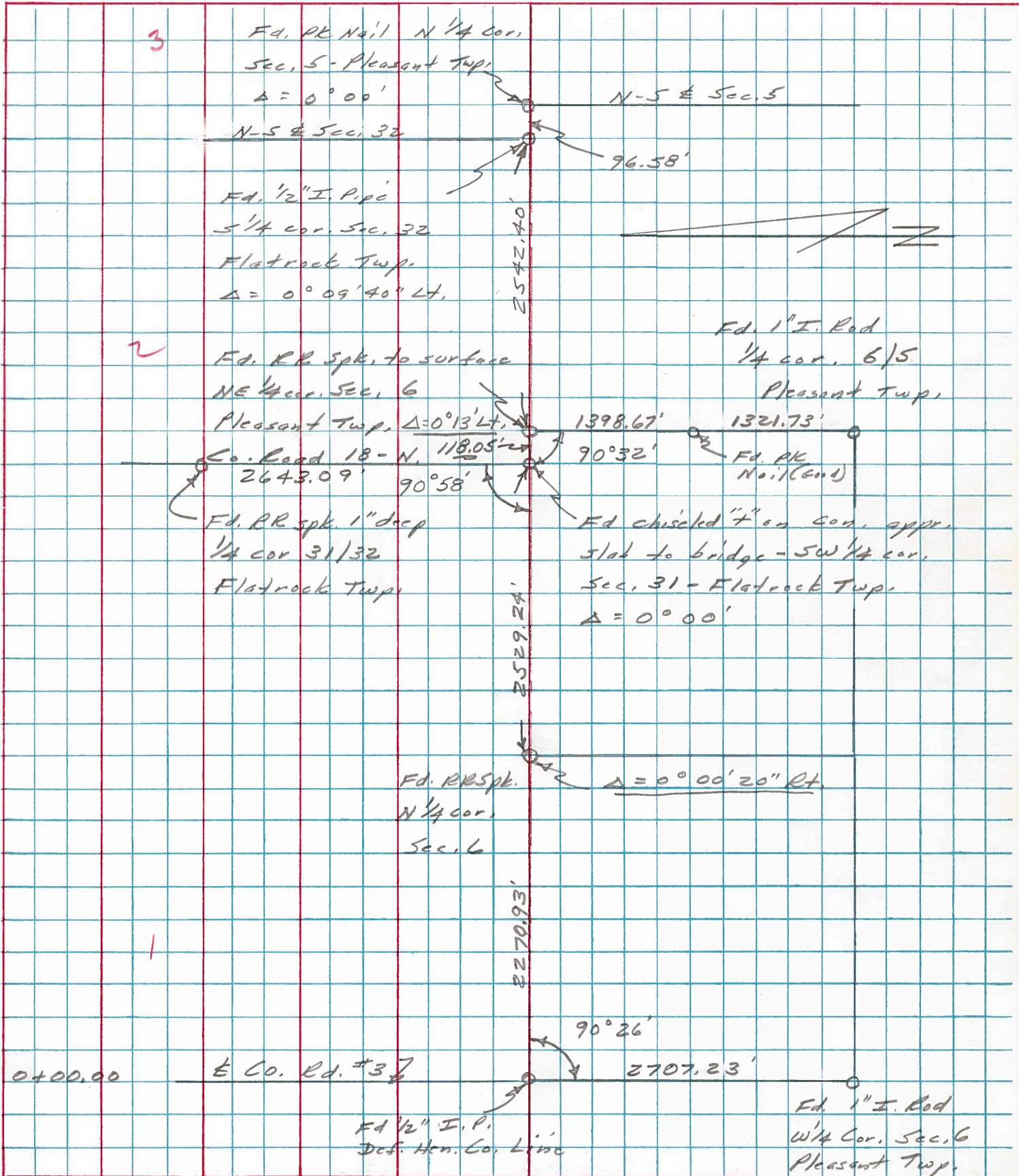
DATE 6-15-76
WEATHER WARM & CLEAR
TEMP _____



- NOTES: ① S.W. COR. OF SEC. 32 FLATROCK TWP.
② FOUND RECORDED "X" CHISELED IN S.E. COR. CONC. APPROACH SLAB.

PERSONNEL	TITLE	PERSONNEL	TITLE	COUNTY	Henry	DATE	9 Oct. 74
Slone				S. R.	#18	WEATHER	Cloudy
Michalak				SEC.	0.00	TEMP.	52°
Deno							
Curtis							

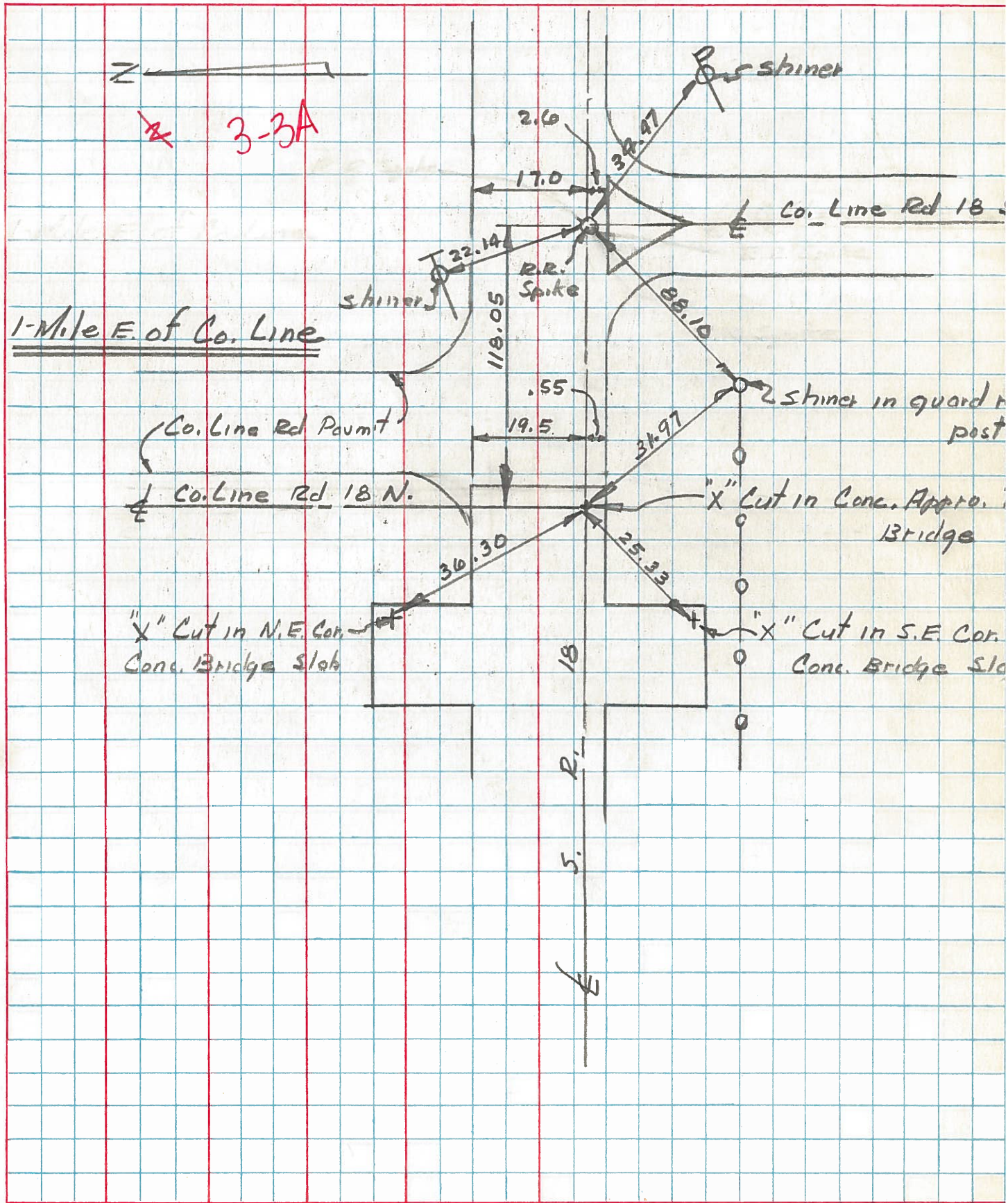
DESCRIPTION Alignment - Dedham County - East JOB NO. _____



PERSONNEL TITLE PERSONNEL TITLE
 W. Denno _____
 R. Michalak _____
 D. Curtis _____

COUNTY Henry DATE July 29, '7
 S. R. 18 WEATHER Warm
 SEC. _____ TEMP. 80°±

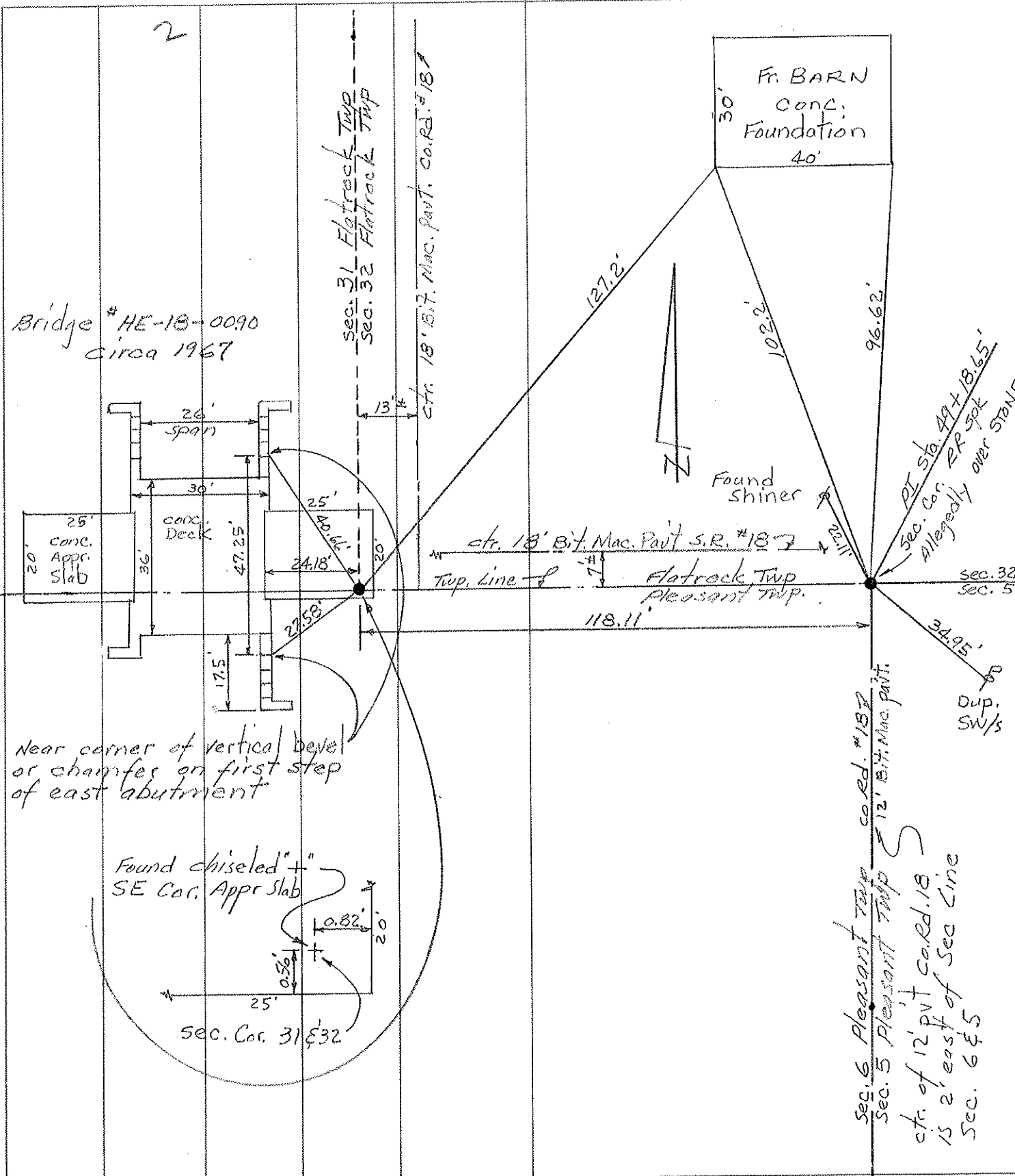
DESCRIPTION References To Control Points JOB NO. 02999(0)
 LEFT CENTER LINE RIGHT



PERSONNEL TITLE PERSONNEL TITLE
 Red Beach, Newcomb
 Knape
 Mead

COUNTY HENRY DATE 8 AUG 1973
 S. R. 18 WEATHER _____
 SEC. _____ TEMP. _____

DESCRIPTION CONTROL POINTS JOB NO. _____
 LEFT CENTER LINE RIGHT



Bridge # HE-18-0090
 Circa 1967

FR. BARN
 Conc.
 Foundation
 30'
 40'

Found Shiner

Near corner of vertical bevel
 or chamfer on first step
 of east abutment

Found chiseled SE Cor. Appr. Slab

Sec. Cor. 31 & 32

sec. 6 Pleasant Twp cor. #187
 sec. 5 Pleasant Twp 12' bit. mac. part.
 ctr. of 12' pit cor. rd. 18
 15 2' east of Sec Line
 Sec. 6 & 5