

O.D.O.T. DISTRICT 2 SURVEY OFFICE (USE ONLY)

PERSONNEL

REFERENCE NO. 3 A

SHEET 5 OF 29

NOTES MOSER DATE 9/9/09
 H.C. GOLDBERG WEATHER CLOUDY
 R.C. MOSER TEMP. 80°

ROUTE SR 18
 COUNTY HENRY
 TOWNSHIP PLEASANT
 SECTION 5
 T 3 N R 6 E

DWG BY NIESE PID NO PID

TYPE MONUMENT P.K. NAIL

ON SURFACE - ~~BELOW~~ ON

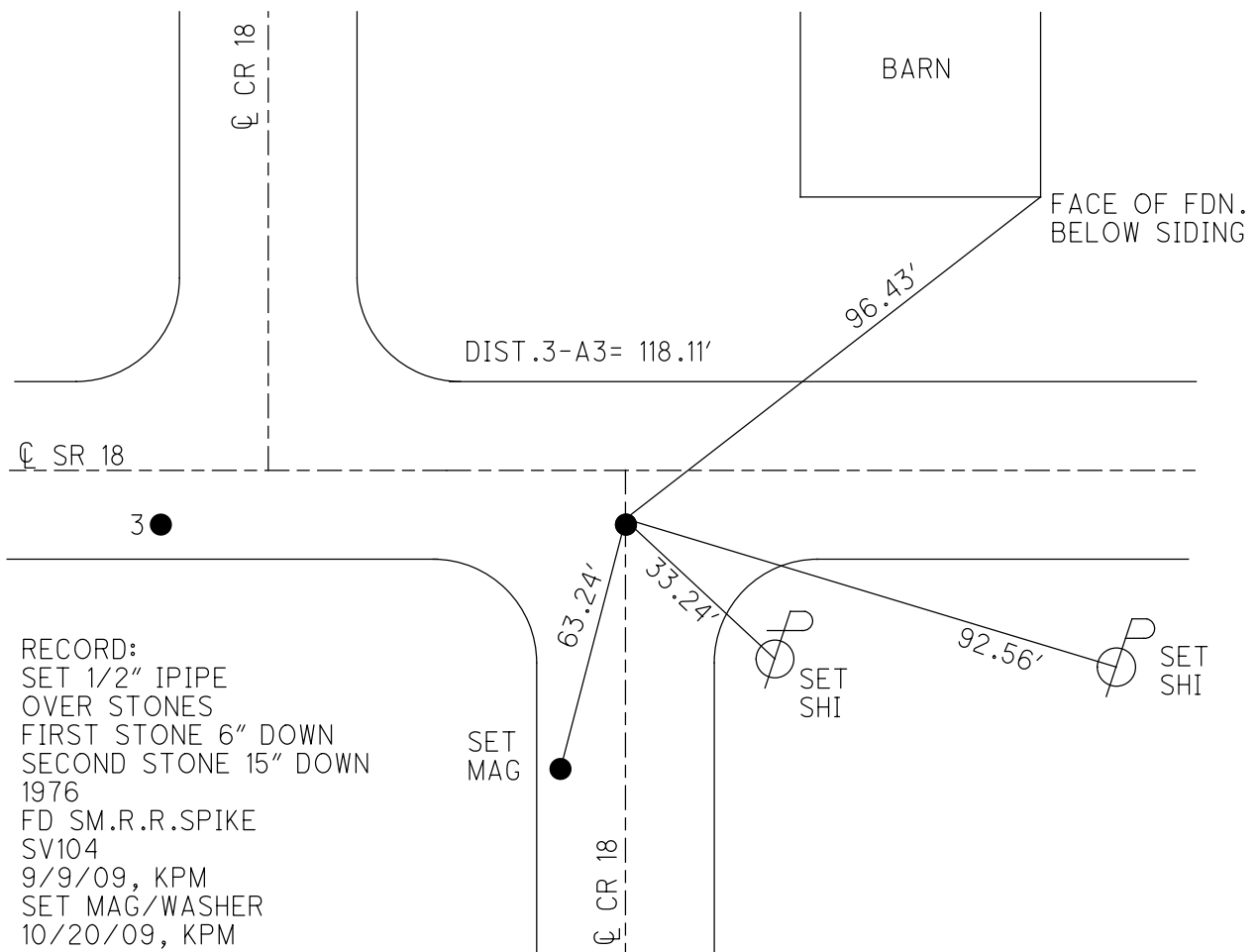
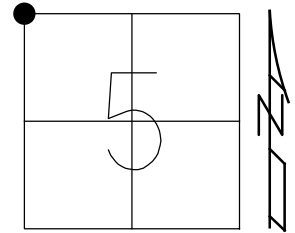
OFFSET CL PAVEMENT 7.0' ~~LT~~ : RT

2.6' TO RT EDGE PAVEMENT

STATION: 49+23

HORZ.DATUM: NAD83(2011) GEOID: 2012A

GRID: NORTHING: 582594.557 EASTING: 1498461.357



RECORD:
 SET 1/2" IPIPE
 OVER STONES
 FIRST STONE 6" DOWN
 SECOND STONE 15" DOWN
 1976
 FD SM.R.R.SPIKE
 SV104
 9/9/09, KPM
 SET MAG/WASHER
 10/20/09, KPM
 FD MAG NAIL
 REFA3
 8/6/19, JFO

O.D.O.T. DISTRICT 2 SURVEY OFFICE (USE ONLY)

PERSONNEL

REFERENCE NO. 3A

SHEET 5 OF 29

NOTES MOSER

DATE 09-09-09

ROUTE SR 18

H.C. GOLDBERG

WEATHER CLOUDY

COUNTY HENRY

R.C. MOSER

TEMP. +80°

TOWNSHIP Flatrock - Pleasant

SECTION 5

TYPE MONUMENT SM SPK

T 3 N R 6 E
4

ON SURFACE - ~~BELOW~~ ON SURFACE

~~LEFT - C PAV'T~~ - RIGHT 7.0'

2.6' TO RT. EDGE PAVEMENT

S.L.M. 49 + 23 (SV 104)

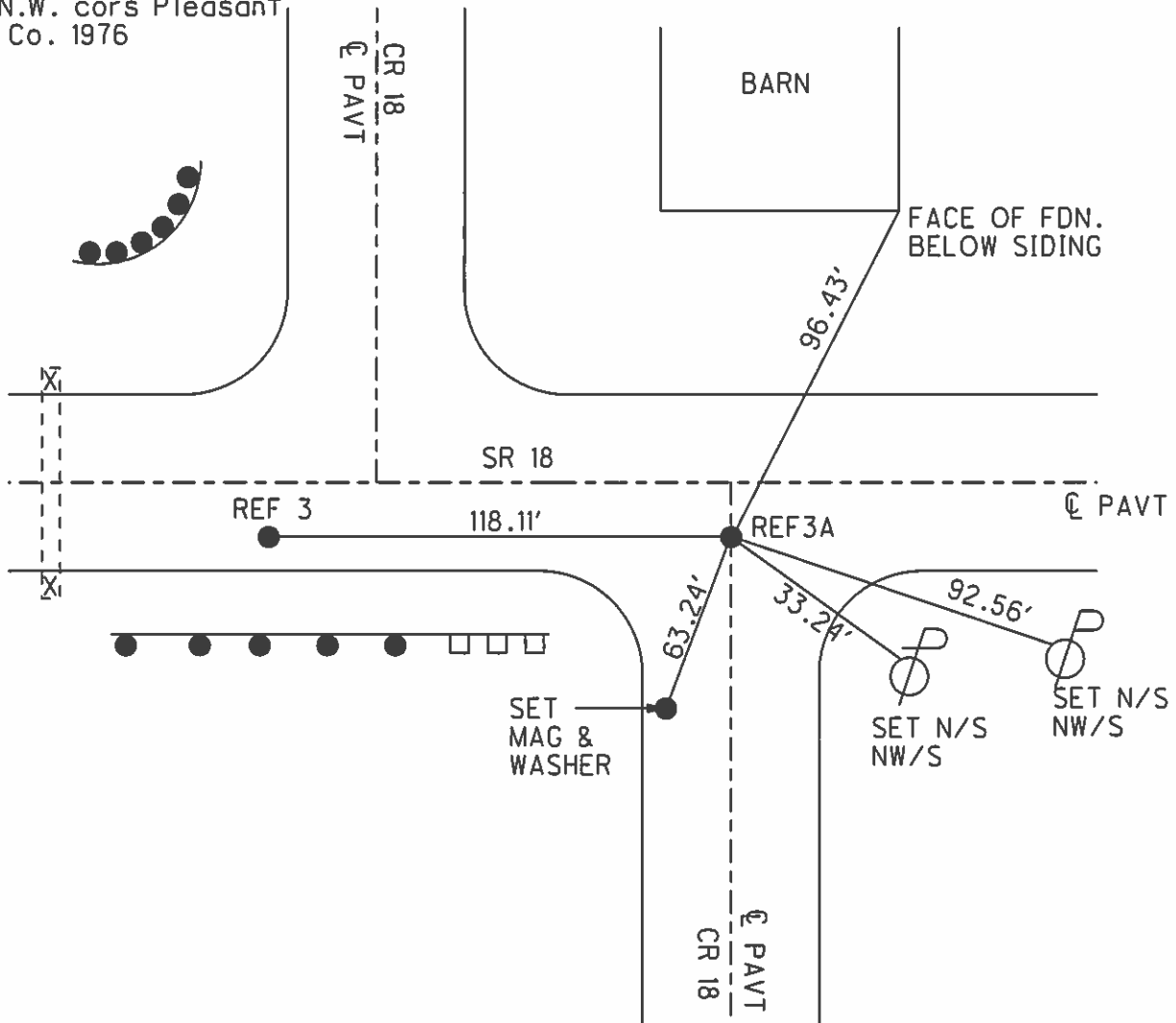
Grid: Northing: 582594.490 Easting: 1498461.310

31 FLATROCK	32 T4N
PLEASANT 6	T3N 5



Record: set 1/2 ipipe
over stones first stone
6" deep second stone 15"
deep N.W. cors Pleasant
Henry Co. 1976

SET MAG/WASHER
10-20-09 KPM



O.D.O.T. DISTRICT 2 SURVEY OFFICE

PERSONNEL

REFERENCE NO. 3-3A

SHEET 3 OF 11

NOTES VAD Dussen

H.C. HUSS

R.C. MOSEK

DATE 5-30-95

WEATHER CLOUDY

TEMP. +55°F

ROUTE S.R. 18

COUNTY HENRY

TOWNSHIP FLAT ROCK - PLEASANT

SECTION 32-5

T. 3 N R. 6 E

T. 4 N

31	32
6	5



TYPE MONUMENT P.K. - 5m. SPK

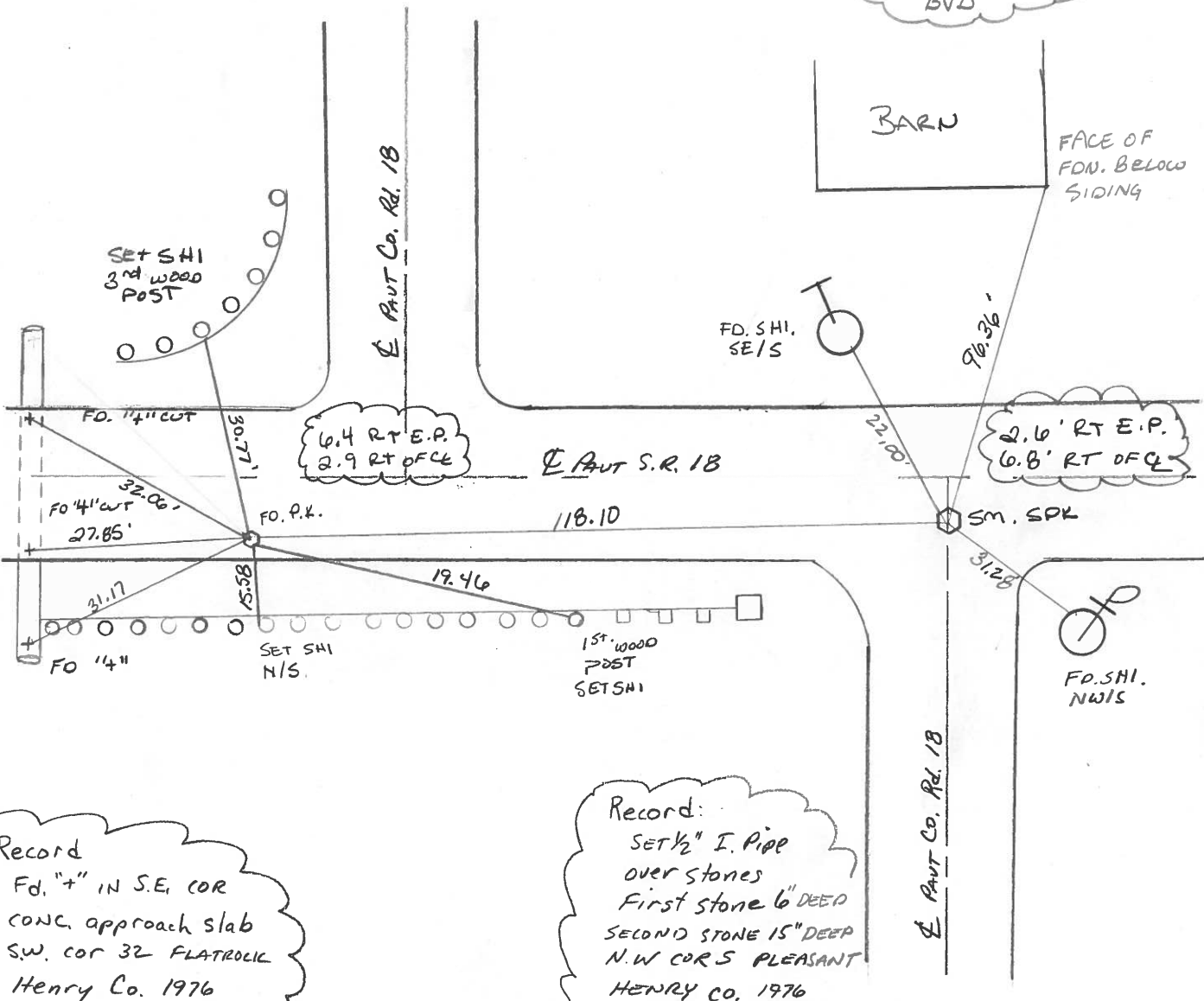
ON SURFACE - BELOW YES

LEFT-☉ PAV'T. - RIGHT See Below

SEE TO BELOW EDGE PAVEMENT

S.L.M. 48+05.7 - 49+23.5

SET PK & WASHERS
8-28-95
BVD



Record
Fd. "+" IN S.E. COR
CONC. approach slab
S.W. cor 32 FLATROCK
Henry Co. 1976

Record:
SET 1/2" I. Pipe
over stones
First stone 6" DEEP
SECOND STONE 15" DEEP
N.W COR S PLEASANT
HENRY CO. 1976

O.D.O.T. DISTRICT 2 SURVEY OFFICE

PERSONNEL

REFERENCE NO. 3 - 3A

SHEET OF

NOTES BARNHISEL

H.C. Loehrke

R.C. SOCKMAN

DATE Aug 11, 1986

WEATHER SUNNY

TEMP. +75°

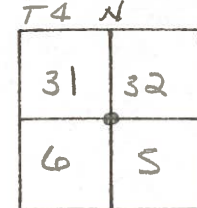
ROUTE SR 18

COUNTY HENRY

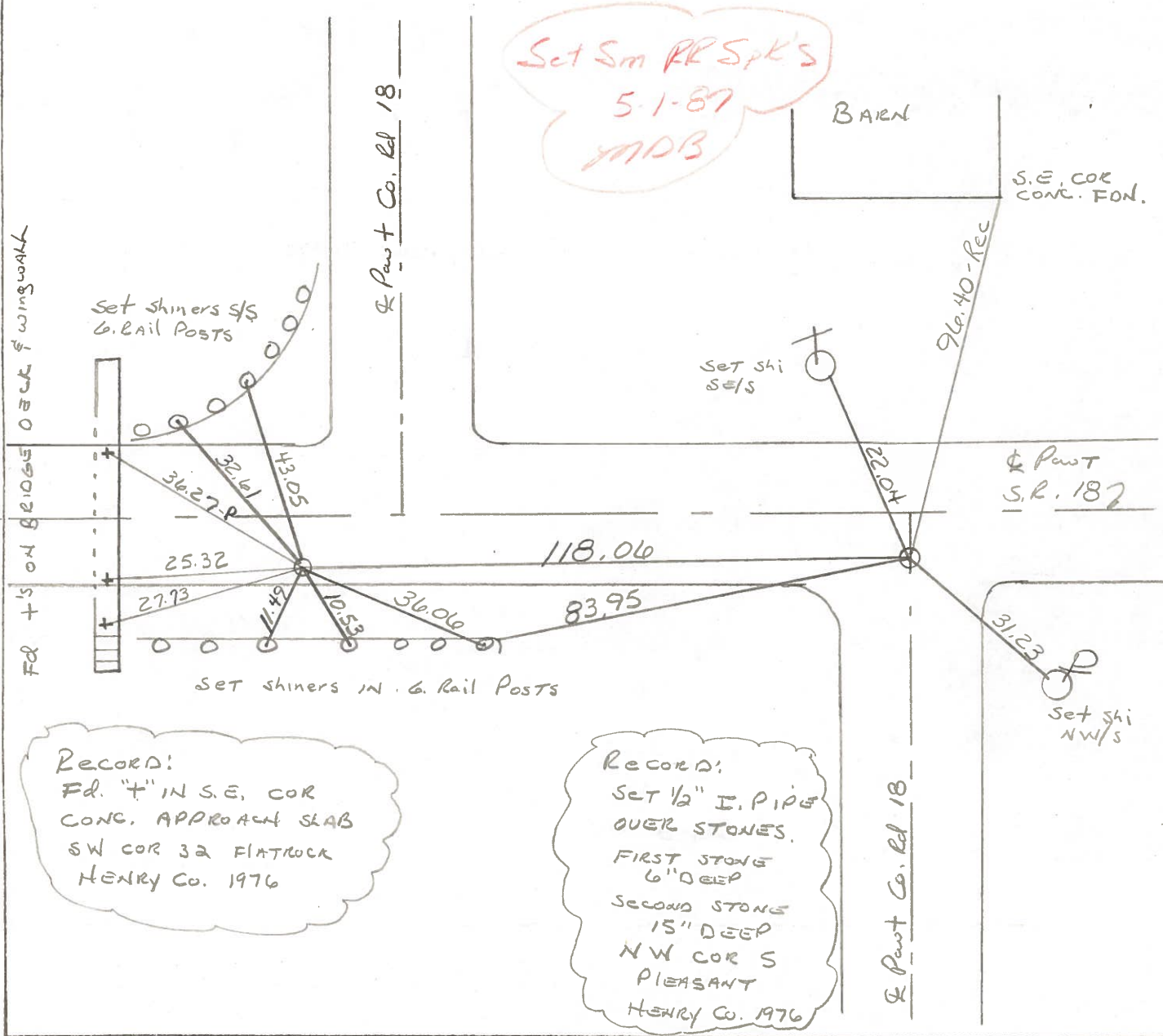
TOWNSHIP FLATROCK - PLEASANT

SECTION 32 - 5

T3 NR 6 E



TYPE MONUMENT P.K. - 1/2" PIPE
 ON SURFACE - BELOW Surface - 2" Below
~~LEFT~~ - & PAV'T. - RIGHT 9.5' - 7.0'
TO EDGE PAVEMENT
 S.L.M. 47+97 - 49+15



RECORD:
 Fd. "T" IN S.E. COR
 CONG. APPROACH SLAB
 SW COR 32 FLATROCK
 HENRY Co. 1976

RECORD:
 SET 1/2" I. PIPE
 OVER STONES.
 FIRST STONE
 6" DEEP
 SECOND STONE
 15" DEEP
 NW COR S
 PLEASANT
 HENRY Co. 1976

HENRY COUNTY ENGINEERS' OFFICE CORNER STONE RECOVERY PROGRAM

Sht. 2 of
S.R. 18

TOWNSHIP PLEASANT

DATE 6-15-76

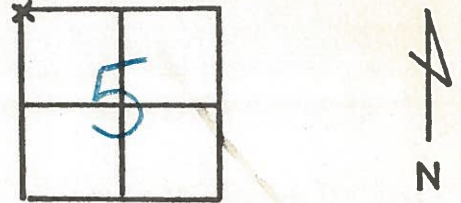
SECTION 5

WEATHER CLEAR & WARM

T3N, R6E

TEMP _____

PERSONNEL J.G.
B.B.
M.S.
S.S.



NOTE:

FOUND STONE OVER STONE. FIRST STONE WAS 6" DEEP AND SECOND STONE IS 15" DEEP. PLACED 1/2" X 4" IRON PIPE OVER TOP CTR. OF STONE. STONE IS 2.75' NORTH OF SOUTH EDGE S.R. 18. P.K.'S 6' N & 6' E.

Copied:

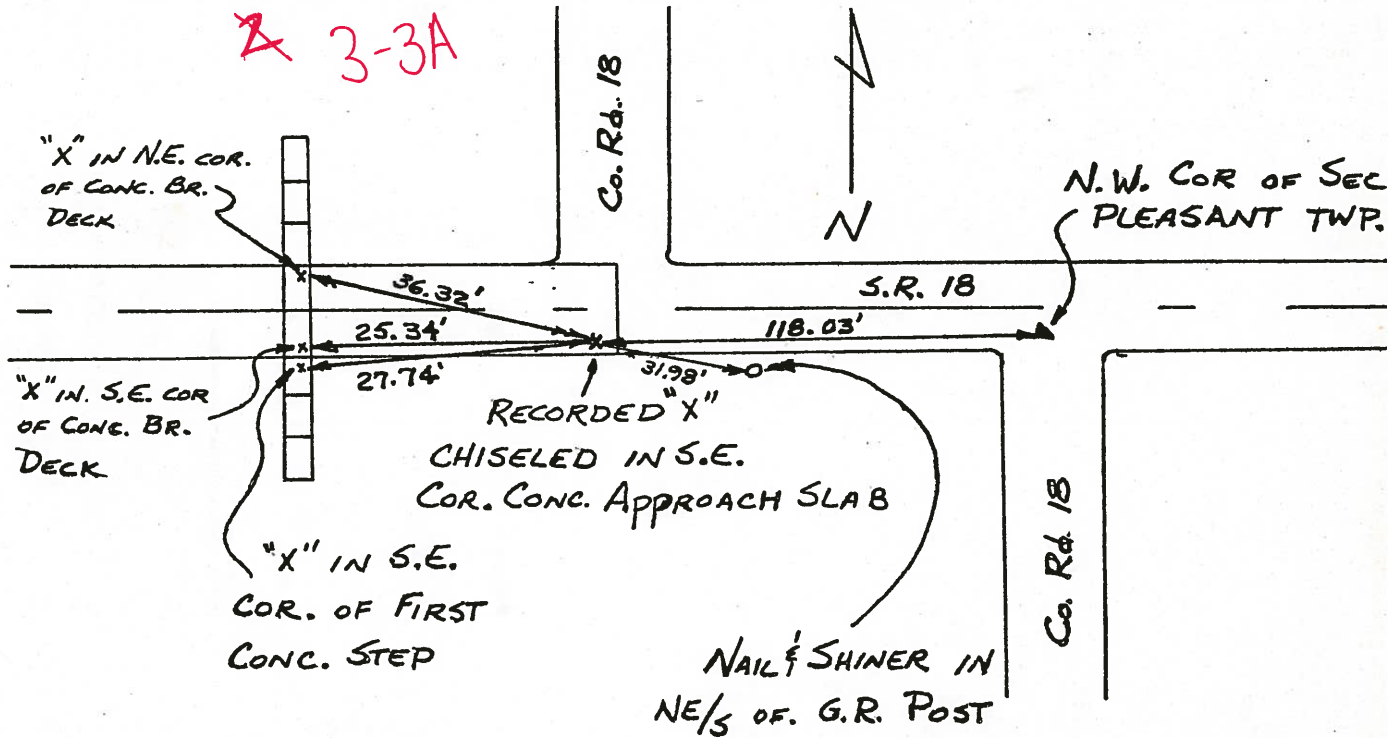
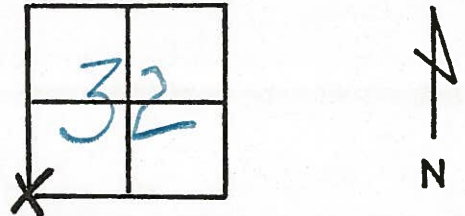
Painted: 8-76

HENRY COUNTY ENGINEER'S OFFICE
CORNER STONE RECOVERY PROGRAM

Sht. 1 of
S. R. 18

TOWNSHIP FLATROCK
SECTION 32
T4N, R6E
PERSONNEL JG
BB
MS
SS

DATE 6-15-76
WEATHER WARM & CLEAR
TEMP _____

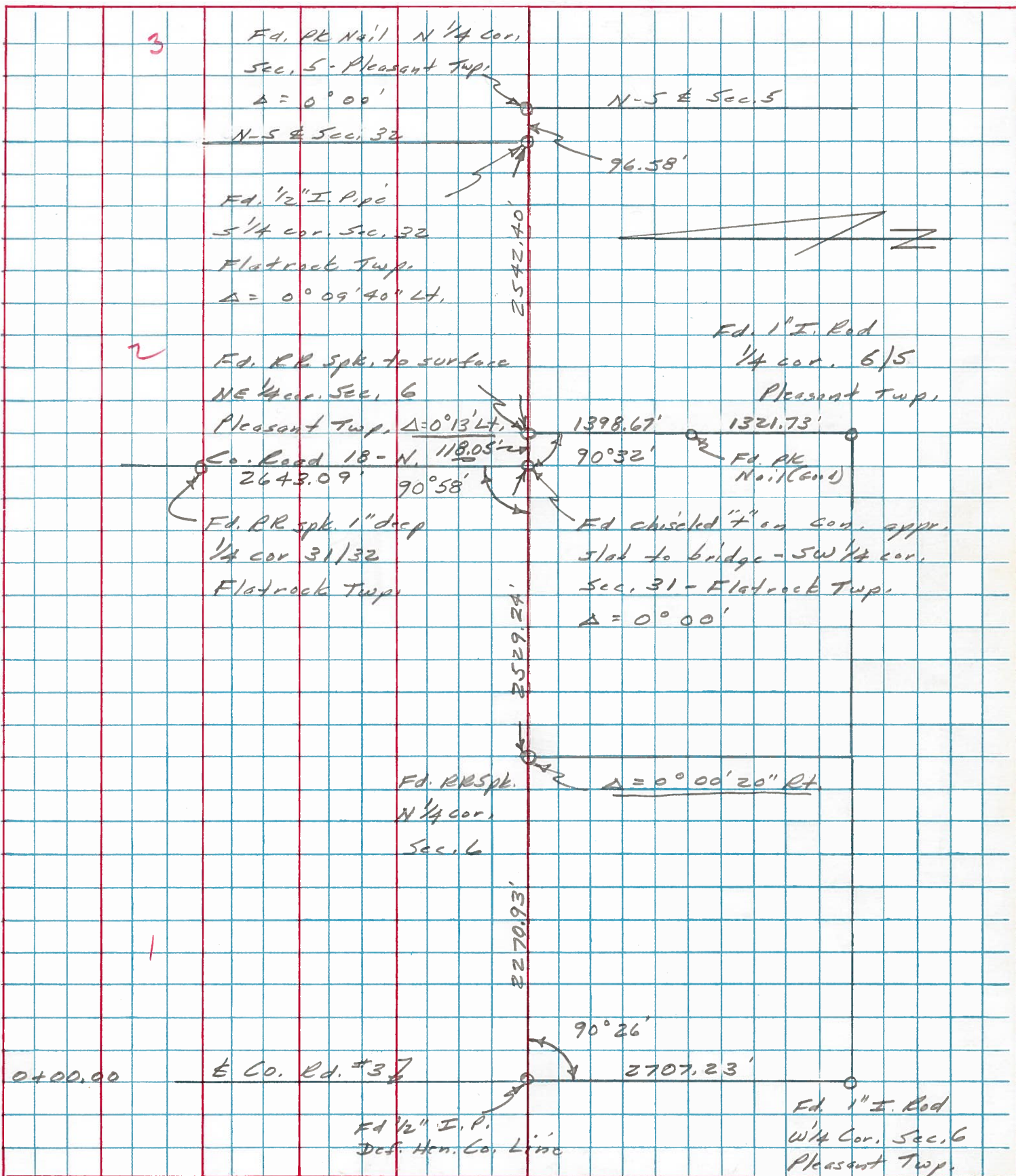


- NOTES: ① S.W. COR. OF SEC. 32 FLATROCK TWP.
② FOUND RECORDED "X" CHISELED IN S.E. COR. CONC. APPROACH SLAB.

Copied:
Painted: 8-76

PERSONNEL	TITLE	PERSONNEL	TITLE	COUNTY	DATE
Slone				Henry	9 Oct. 74
Michalak				S. R. #18	WEATHER Cloudy
Deno				SEC. 0.00	TEMP. 52°
Curtis					

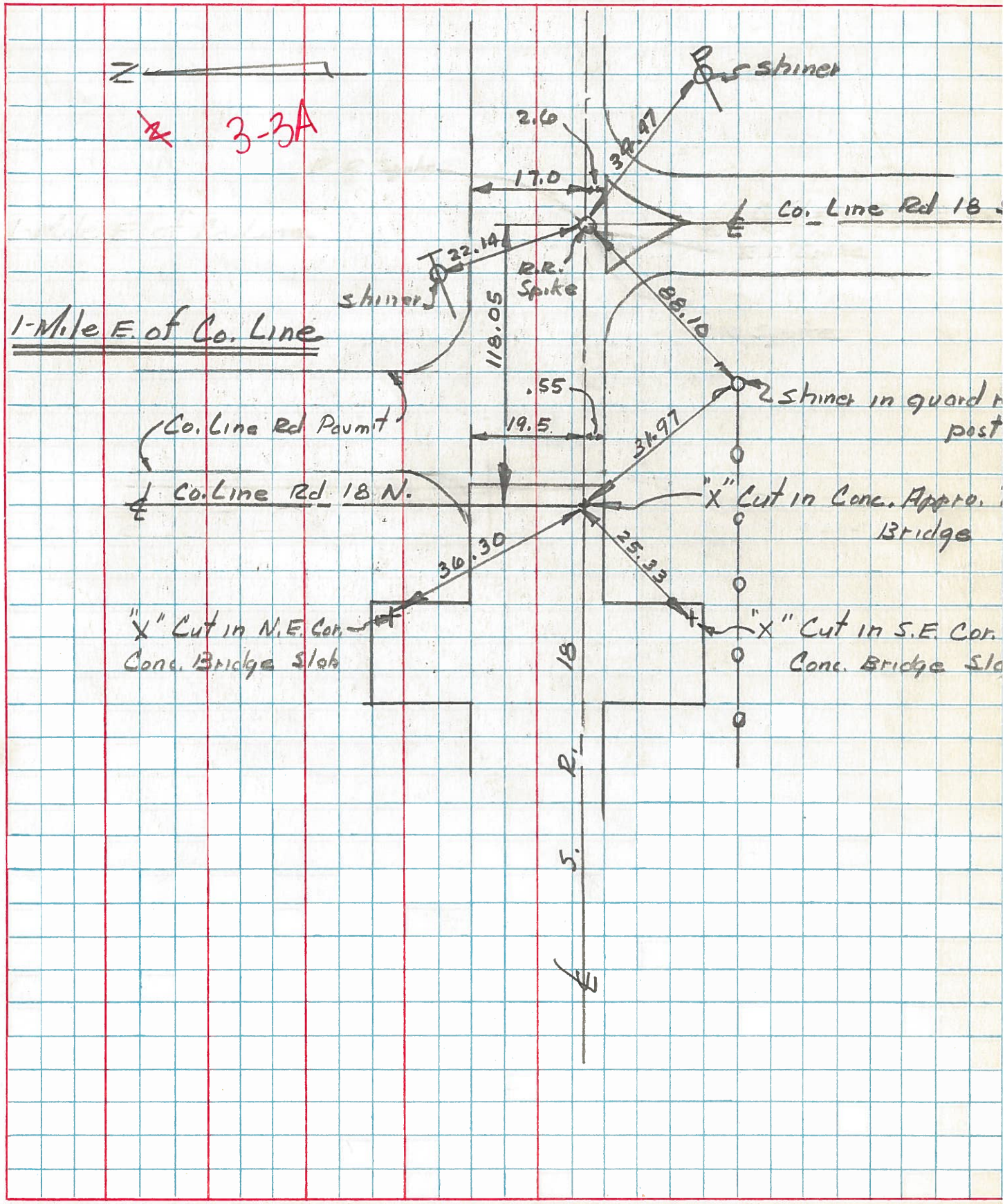
DESCRIPTION Alignment - Dedhamer County - East JOB NO. _____



PERSONNEL	TITLE	PERSONNEL	TITLE
<u>W. Denno</u>			
<u>R. Michalak</u>			
<u>D. Curtis</u>			

COUNTY Henry DATE July 29, '7
 S. R. 18 WEATHER Warm
 SEC. _____ TEMP. 80°±

DESCRIPTION References To Control Points JOB NO. 02999(0)



PERSONNEL	TITLE	PERSONNEL	TITLE
Red Beach			
Newcomb			
Knape			
Mead			

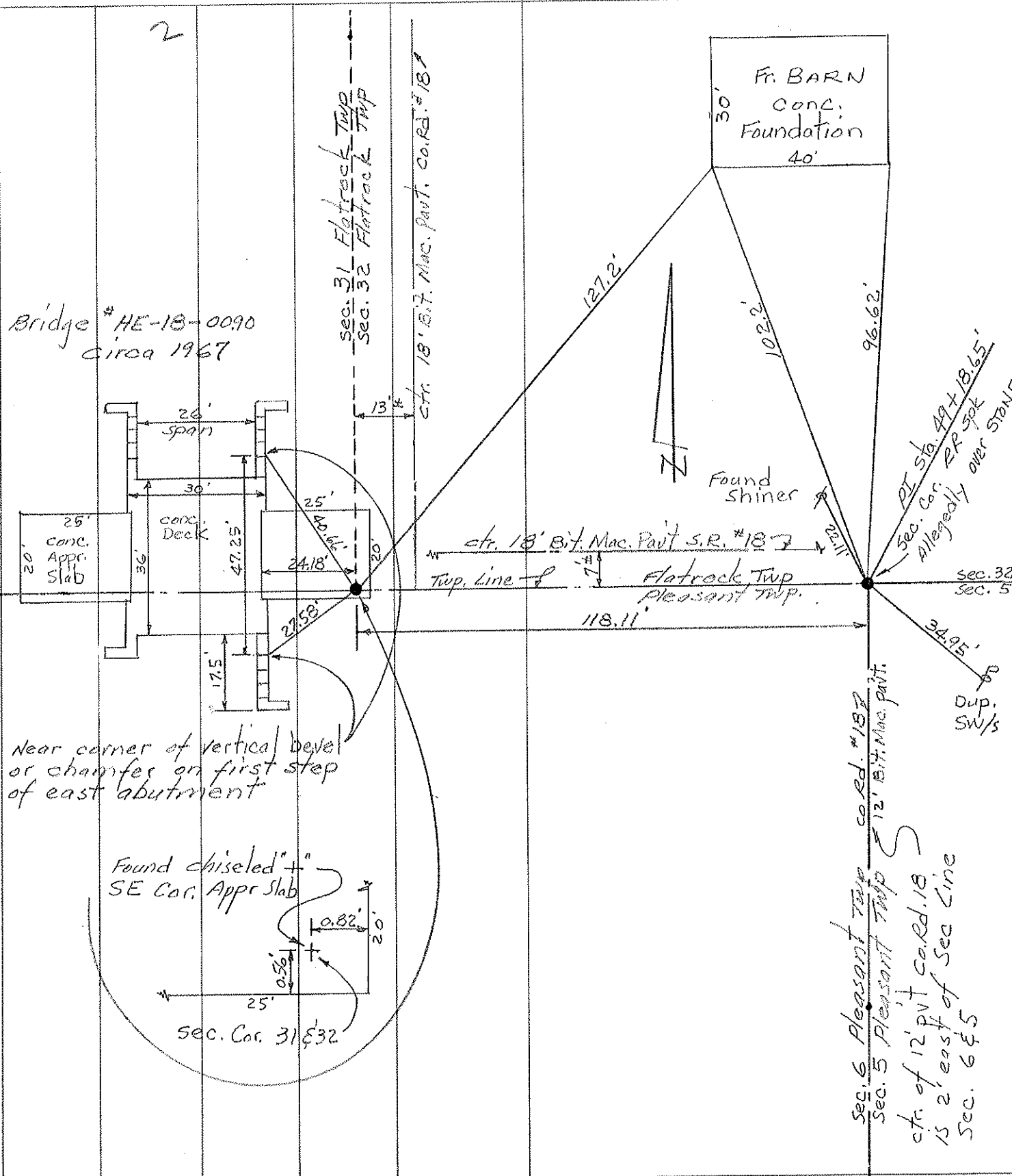
COUNTY HENRY DATE 8 AUG 1973

S. R. 18 WEATHER _____

SEC. _____ TEMP _____

DESCRIPTION CONTROL POINTS JOB NO. _____

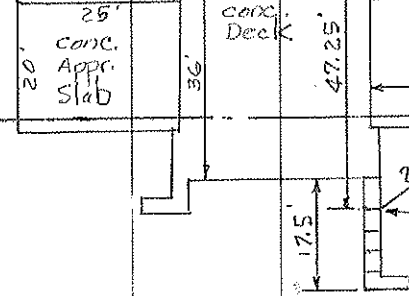
LEFT CENTER LINE RIGHT



Bridge # HE-18-0090
Circa 1967

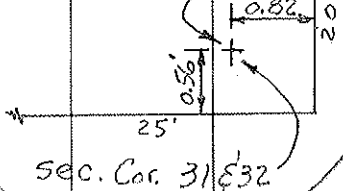
FR. BARN
Conc.
Foundation
30'
40'

Found
Shiner



Near corner of vertical bevel
or chamfer on first step
of east abutment

Found chiseled
SE Cor. Appr. Slab



Sec. Cor. 31 & 32

sec. 6 Pleasant Twp cor. #187
sec. 5 Pleasant Twp
ctr. of 12' pvt cor. rd. 18
15 2' east of Sec Line
Sec. 6 & 5

sec. 31
Sec. 6

sec. 32
Sec. 5

Out.
SW/S