

O.D.O.T. DISTRICT 2 SURVEY OFFICE (USE ONLY)

PERSONNEL

REFERENCE NO. 5 A

SHEET 9 OF 29

NOTES LEU

DATE 7/28/15

ROUTE SR 18

H.C. HOMAN

WEATHER SUNNY

COUNTY HENRY

R.C. LEU

TEMP. 88°

TOWNSHIP PLEASANT

DWG BY NIESE PID NO PID

SECTION 4

T 3 N R 6 E

TYPE MONUMENT MAG NAIL

ON SURFACE - ~~BELOW~~ ON

OFFSET  $\odot$  PAVEMENT 0.8' ~~±~~ : RT

9.6' TO LT EDGE PAVEMENT

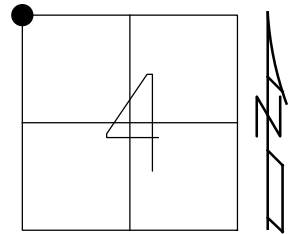
STATION: 102+25

HORZ. DATUM: NAD83(2011)

GEOID: 2012A

GRID: NORTHING: 582504.448

EASTING: 1503748.349



RECORD:  
 FD 3/4" IPIPE  
 OVER STONE 15" DOWN  
 SET PIPE  
 1976  
 FD P.K./WASHER  
 9/9/9, KPM  
 SET MAG/WASHER  
 SV108  
 10/20/09, KPM  
 FD MAG NAIL  
 7/28/15, DCH  
 8/6/19, JFO

$\odot$  CR 17

DIST. 5-5A = 85.13'

$\odot$  SR 18

5 ●

FD  
MAG

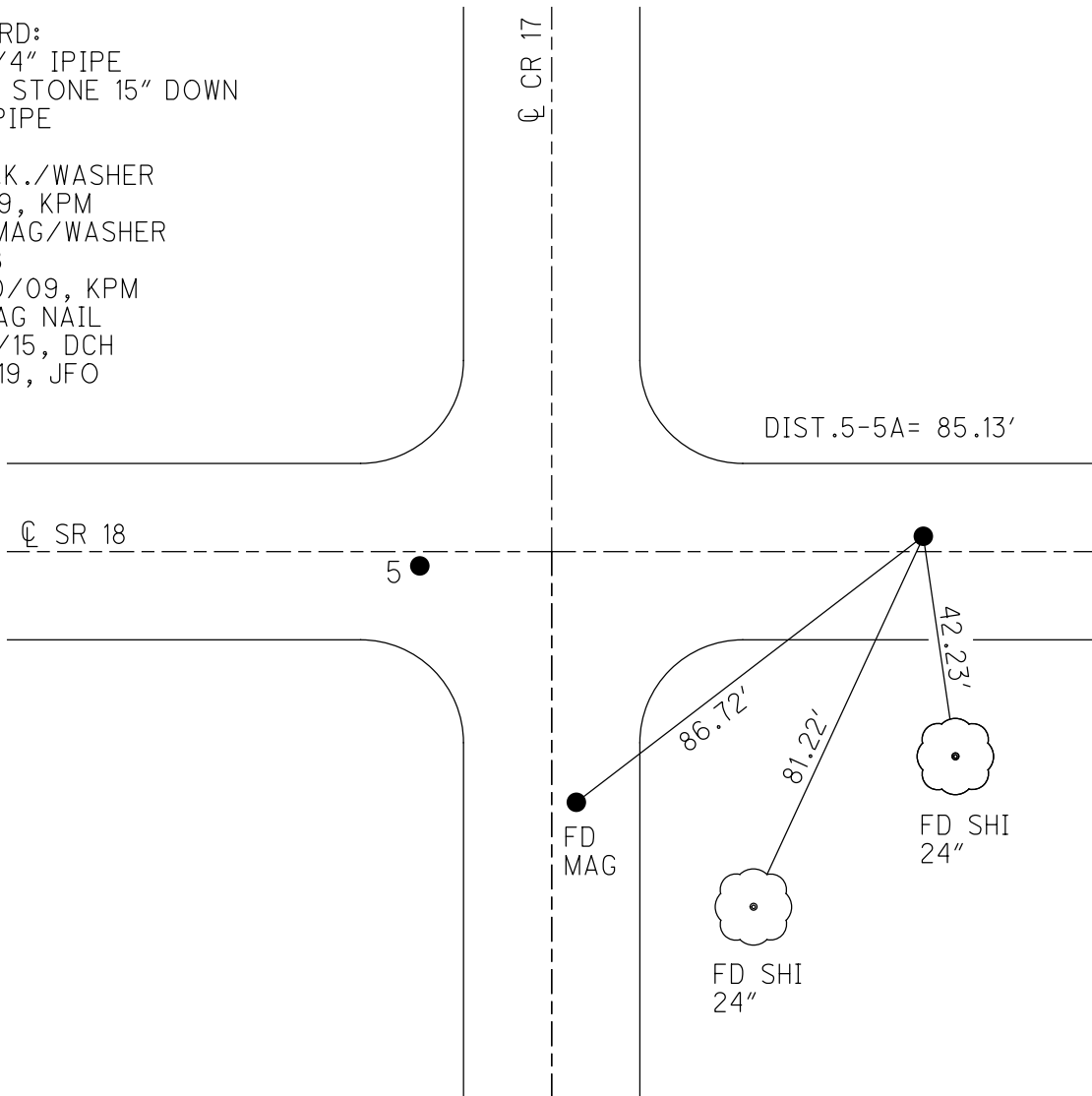
86.72'

81.22'

42.23'

FD SHI  
24"

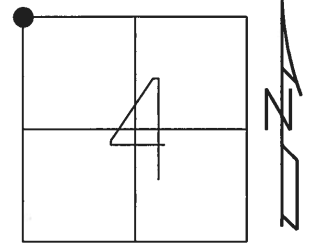
FD SHI  
24"



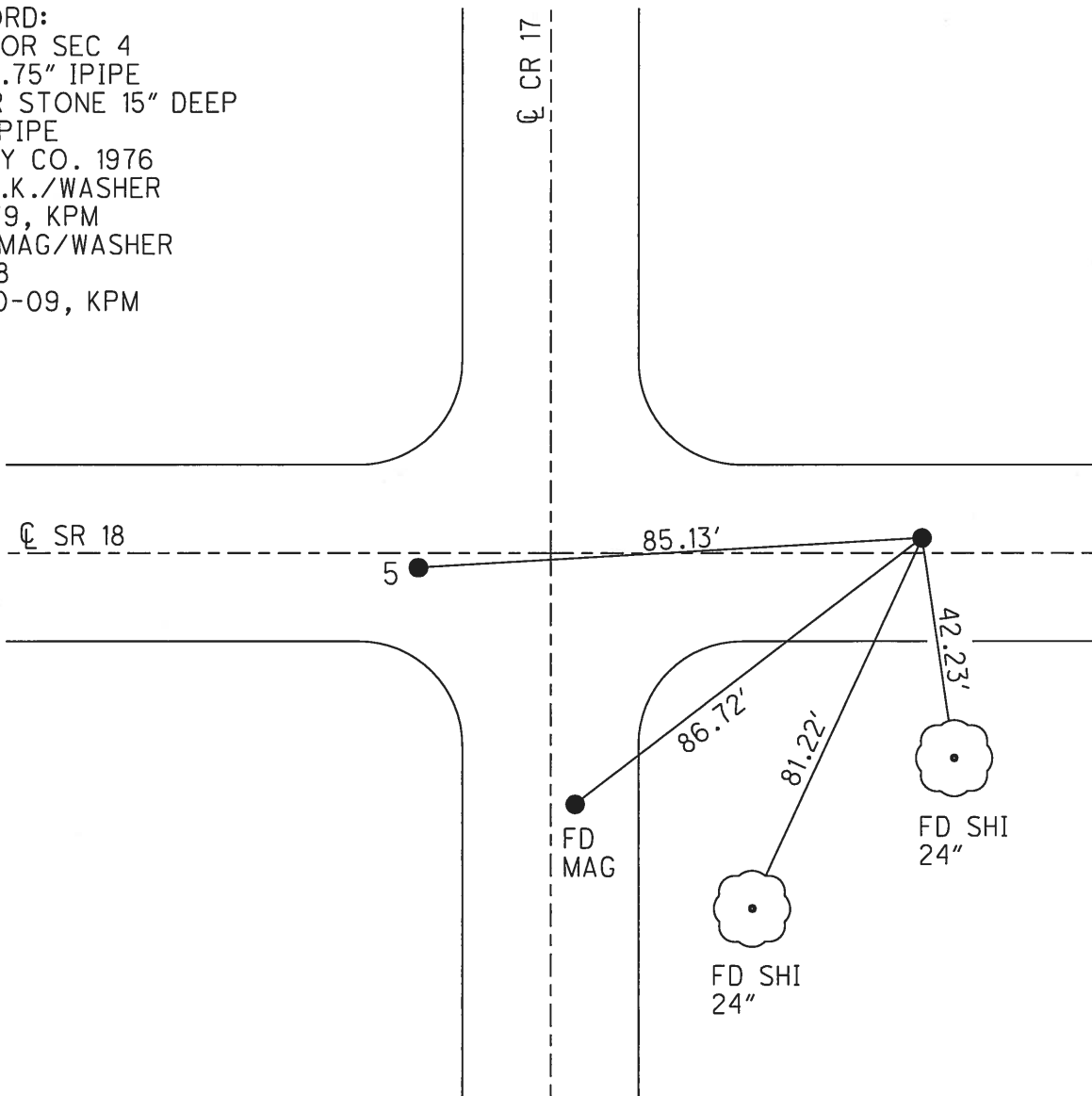
O.D.O.T. DISTRICT 2 SURVEY OFFICE (USE ONLY)

PERSONNEL \_\_\_\_\_ REFERENCE NO. 5A SHEET 9 OF 29  
 NOTES LEU DATE 7/28/15 ROUTE SR 18  
 H.C. HOMAN WEATHER SUNNY COUNTY HENRY  
 R.C. LEU TEMP. 88° TOWNSHIP PLEASANT  
 SECTION 4  
 T 3 N R 6 E

TYPE MONUMENT MAG NAIL  
 ON SURFACE - ~~BELOW~~ ON \_\_\_\_\_  
~~LEFT~~ - Q PAV'T - RIGHT 0.8'  
9.6' TO LT EDGE PAVEMENT  
 S.L.M. 102+25  
 GRID: NORTHING: 582504.454 EASTING: 1503748.251



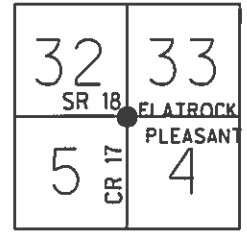
RECORD:  
 NW COR SEC 4  
 FD 0.75" IPIPE  
 OVER STONE 15" DEEP  
 SET PIPE  
 HENRY CO. 1976  
 FD P.K./WASHER  
 9/9/9, KPM  
 SET MAG/WASHER  
 SV108  
 10-20-09, KPM



O.D.O.T. DISTRICT 2 SURVEY OFFICE (USE ONLY)

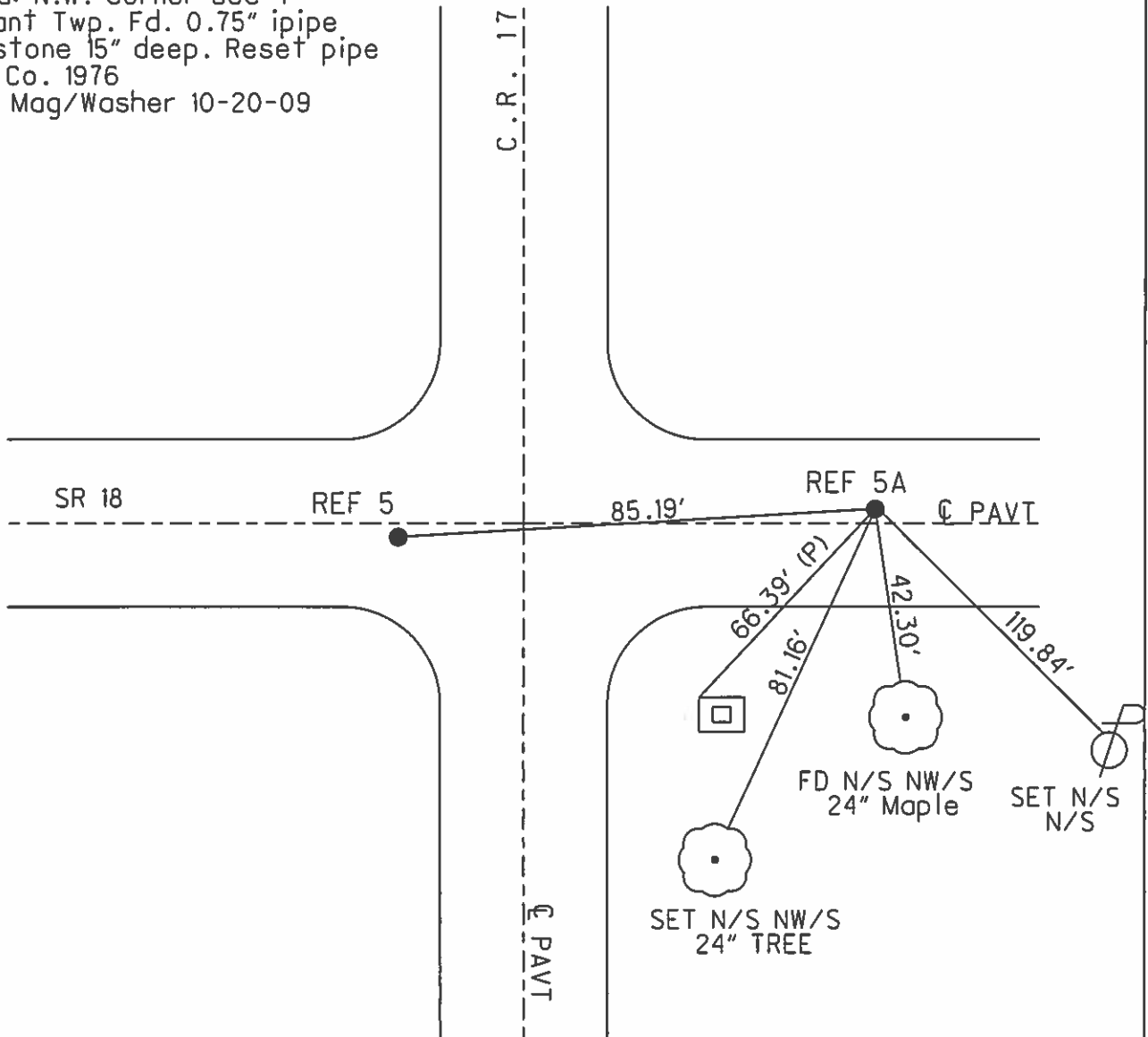
PERSONNEL \_\_\_\_\_ REFERENCE NO. 5A SHEET 9 OF 29  
 NOTES MOSER DATE 09-09-09 ROUTE SR 18  
 H.C. GOLDBERG WEATHER CLOUDY COUNTY HENRY  
 R.C. MOSER TEMP. +80° TOWNSHIP PLEASANT  
 \_\_\_\_\_ SECTION 33 - 4  
 \_\_\_\_\_ T 3 N R 6 E

TYPE MONUMENT PK & WASHER  
 ON SURFACE - ~~BELOW~~ ON SURFACE  
~~LEFT - C PAV'T - RIGHT~~ 0.5'  
9.6' TOLT. EDGE PAVEMENT  
 S.L.M. 102 + 25 (SV 108)



Grid: Northing: 582504.454 Easting: 1503748.251

Record: N.W. corner sec 4  
 Pleasant Twp. Fd. 0.75" ipipe  
 over stone 15" deep. Reset pipe  
 Henry Co. 1976  
 Reset Mag/Washer 10-20-09



O.D.O.T. DISTRICT 2 SURVEY OFFICE

PERSONNEL

REFERENCE NO. 5-5A

SHEET 5 OF 11

NOTES VAN DUSEN

H.C. HUSS

DATE 5-30-95

ROUTE SR-18

R.C. MOSEK

WEATHER CLOUDY

COUNTY Henry

TEMP. +70°F

TOWNSHIP Flatrock - Pleasant

SECTION 33 - 4

T 4 N R 6 E

32	33
SR 18	
5	4



TYPE MONUMENT PK & WASHERS

ON SURFACE - BELOW YES

LEFT - & PAV'T. - RIGHT SEE BELOW

SEE TO BELOW EDGE PAVEMENT

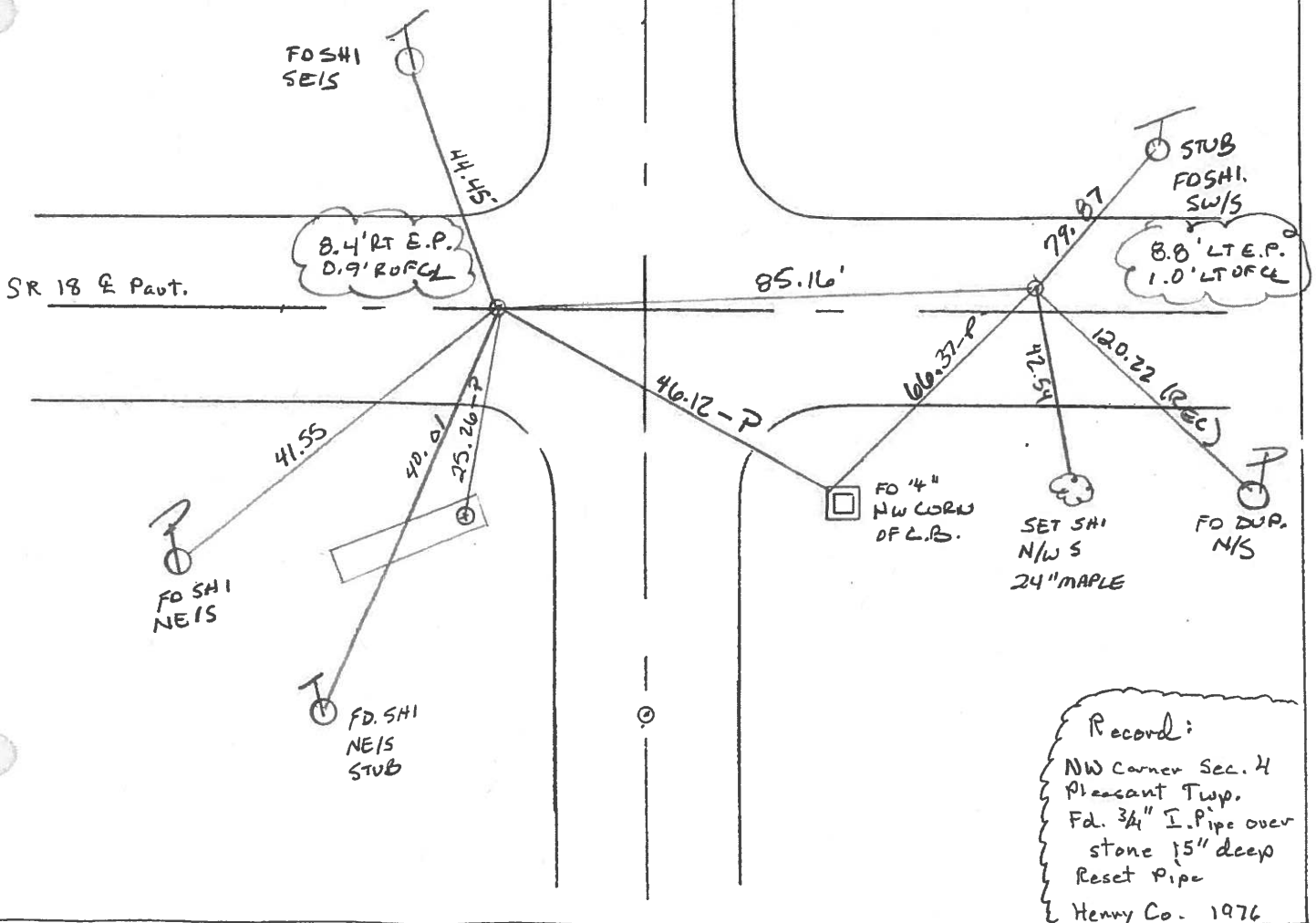
S.L.M. 101+30 - 102+25

Record:

SW. Corner Sec 33  
Flatrock Twp -  
Placed RR spt over  
stone 27 1/2" deep  
Henry Co 1976

C.R. 17 & Part.

SET PK'S & WASHERS  
8-28-95  
BVD



Record:

NW Corner Sec. 4  
Pleasant Twp.  
Fd. 3/4" I. Pipe over  
stone 15" deep  
Reset Pipe  
Henry Co. 1976

# O.D.O.T. DISTRICT 2 SURVEY OFFICE

PERSONNEL

REFERENCE NO. 5 - SA

SHEET      OF     

NOTES BARNHISEL

H.C. Loehrke

R.C. SOCKMAN

DATE Aug 12, 1986

WEATHER SUNNY

TEMP. +75°

ROUTE SR 18

COUNTY HENRY

TOWNSHIP FLATROCK - PLEASANT

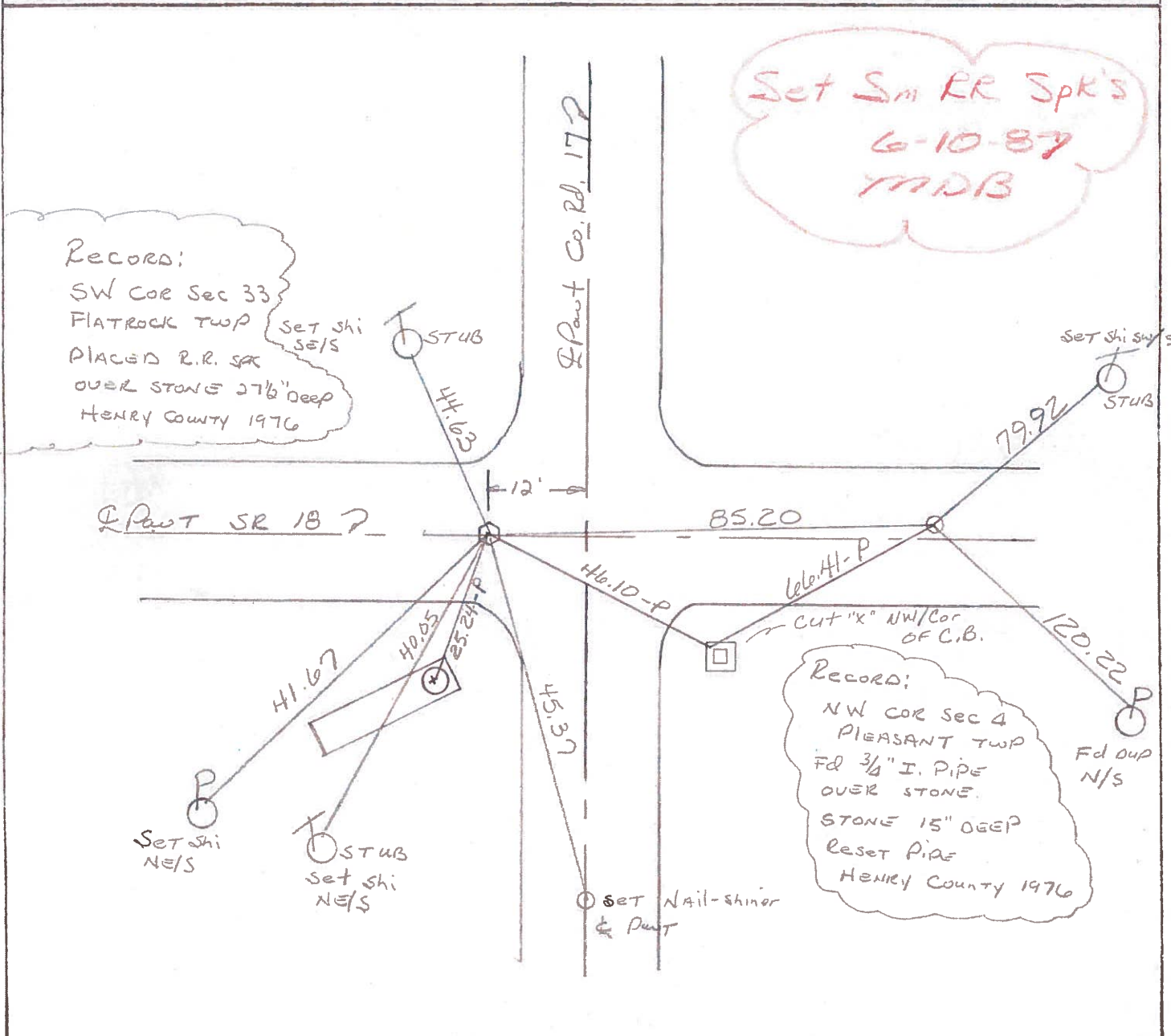
SECTION 33 - 4

T4 N R 6 E  
T3 N

32	33
5	4



TYPE MONUMENT R.R. SPIKE - P.I.C.  
 ON SURFACE - ~~BELOW~~ yes - yes  
 LEFT - CL PAV'T. - RIGHT ON CL - 1.3' LT.  
8.0 TO RT EDGE PAVEMENT  
7.8 LT.  
 S.L.M. 101+19 - 102+04



# HENRY COUNTY ENGINEER'S OFFICE CORNER STONE RECOVERY PROGRAM

Sht. 5 of.  
SR. 18

TOWNSHIP PLEASANT

DATE 6-17-76

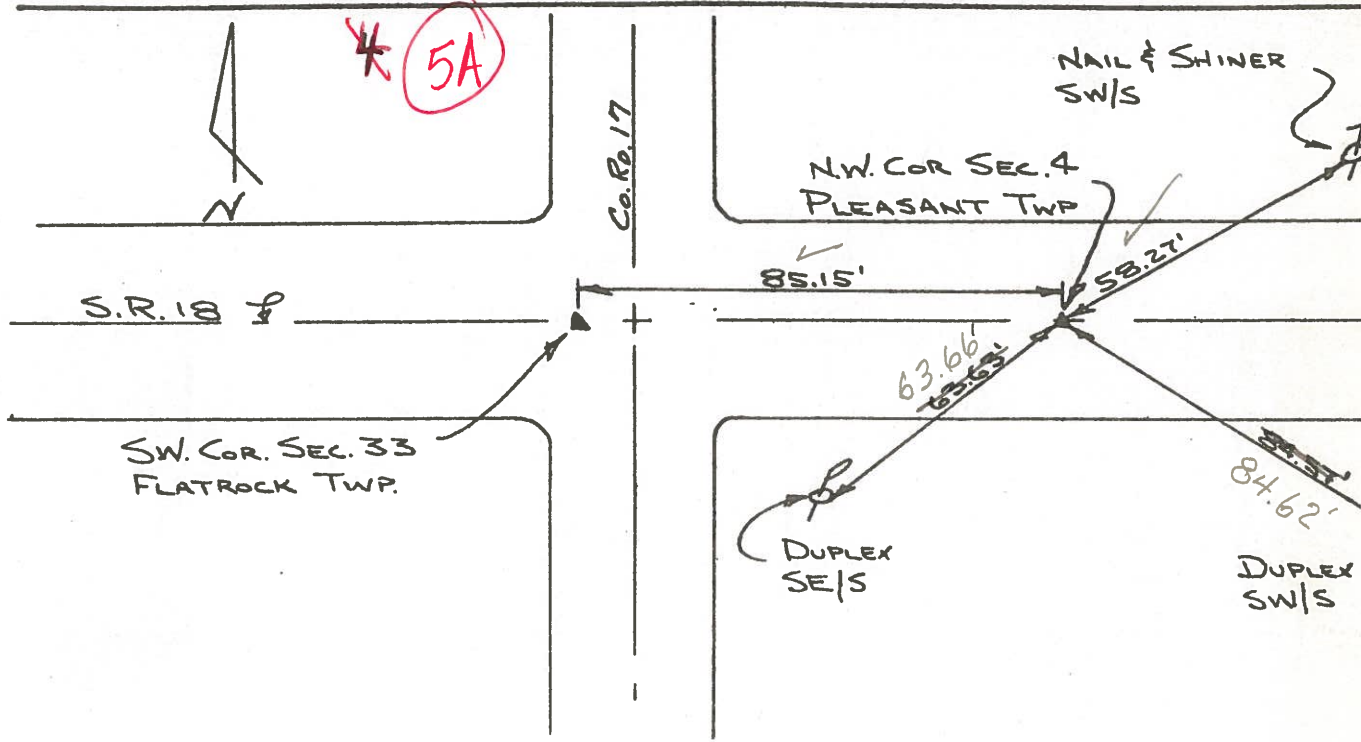
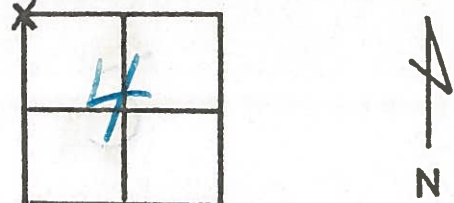
SECTION 4

WEATHER CLEAR & WARM

T3N, R6E

TEMP \_\_\_\_\_

PERSONNEL JG  
BB  
M.S  
S.S.  
R.S.



NOTE: FOUND 3/4" IRON PIPE OVER STONE. STONE WAS 15" DEEP.  
REPLACED PIPE AS FOUND. P.K.'S 6' N & 6' W.

Copied:

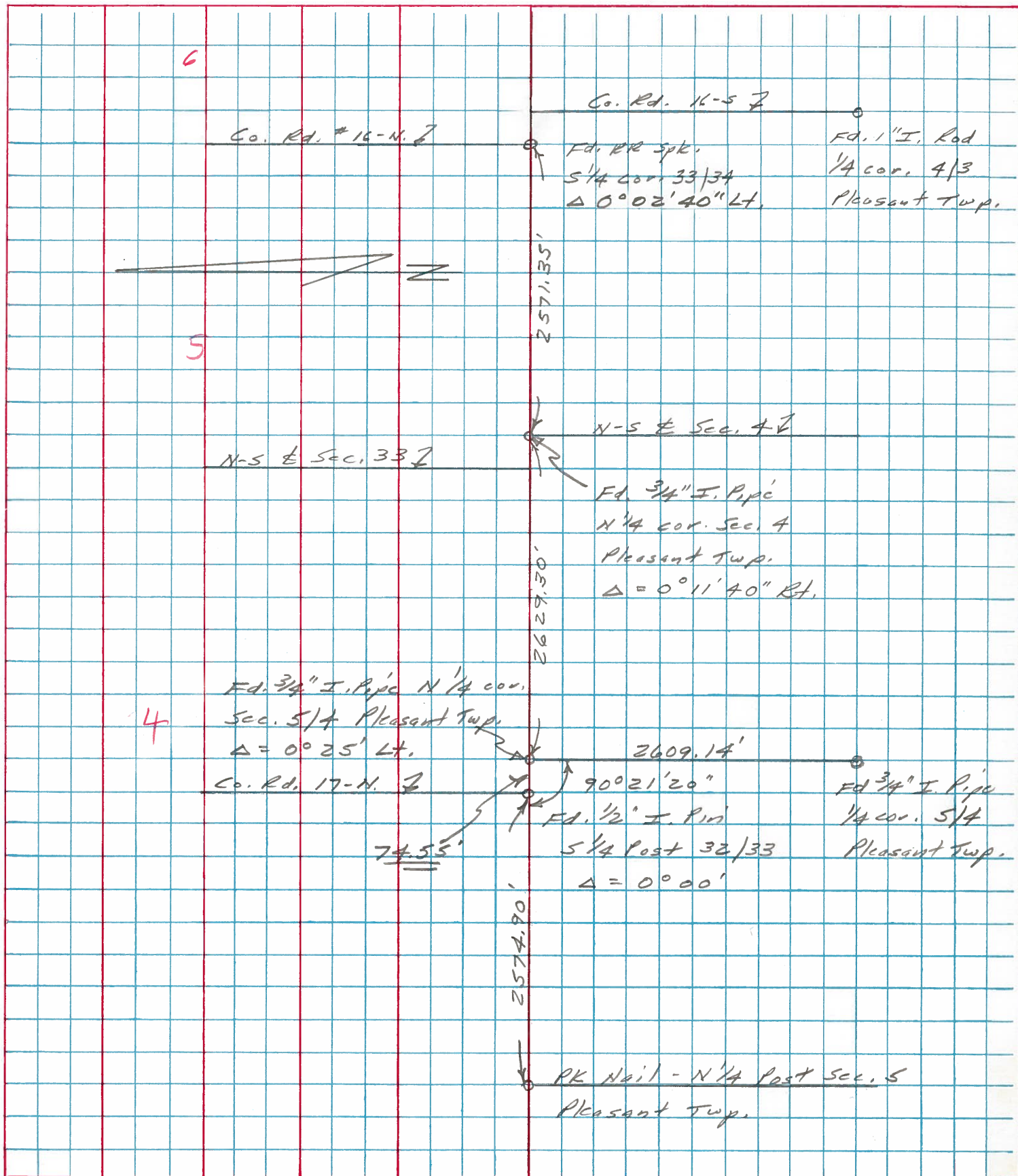
Painted: 8-76

Form 201-1-0-70



PERSONNEL	TITLE	PERSONNEL	TITLE	COUNTY	Henry	DATE	17 Oct. 79
Stone				S. R.	#18	WEATHER	Clear
Curtis				SEC.	Pleasant Twp.	TEMP.	60°
Denno							

DESCRIPTION Alignment LEFT CENTER LINE RIGHT JOB NO.





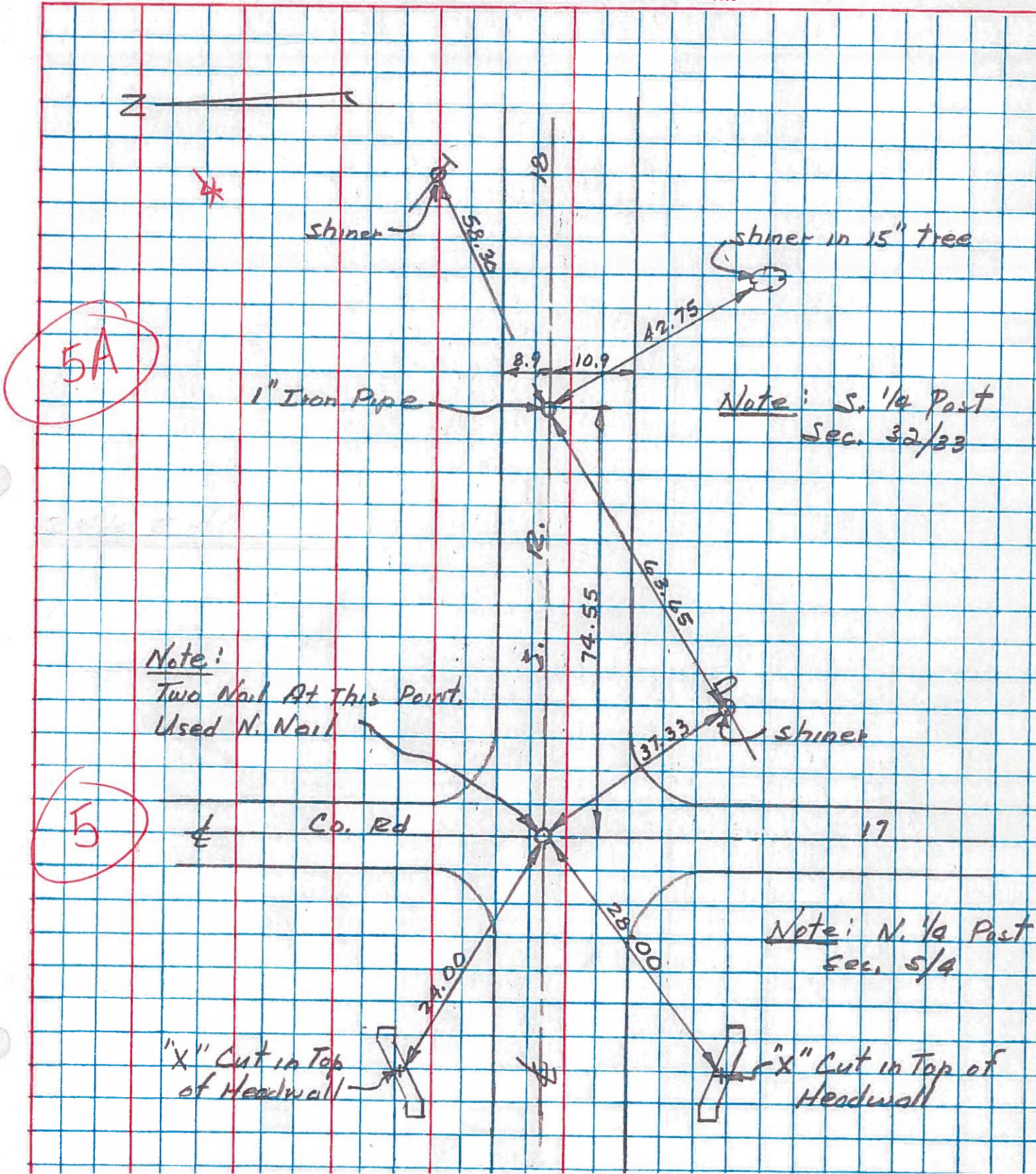
PERSONNEL	TITLE	PERSONNEL	TITLE
W. Denno			
R. Michalak			
D. Curtis			

COUNTY Henry DATE July 30, '7

S. R. 18 WEATHER Warm

SEC. \_\_\_\_\_ TEMP. 75° ±

DESCRIPTION References To Control Points JOB NO. 02999(0)



5A

5

Note: Two Nails At This Point. Used N. Nail

Note: S. 1/4 Past Sec. 32/33

Note: N. 1/4 Past Sec. 5/4

"X" Cut in Top of Headwall

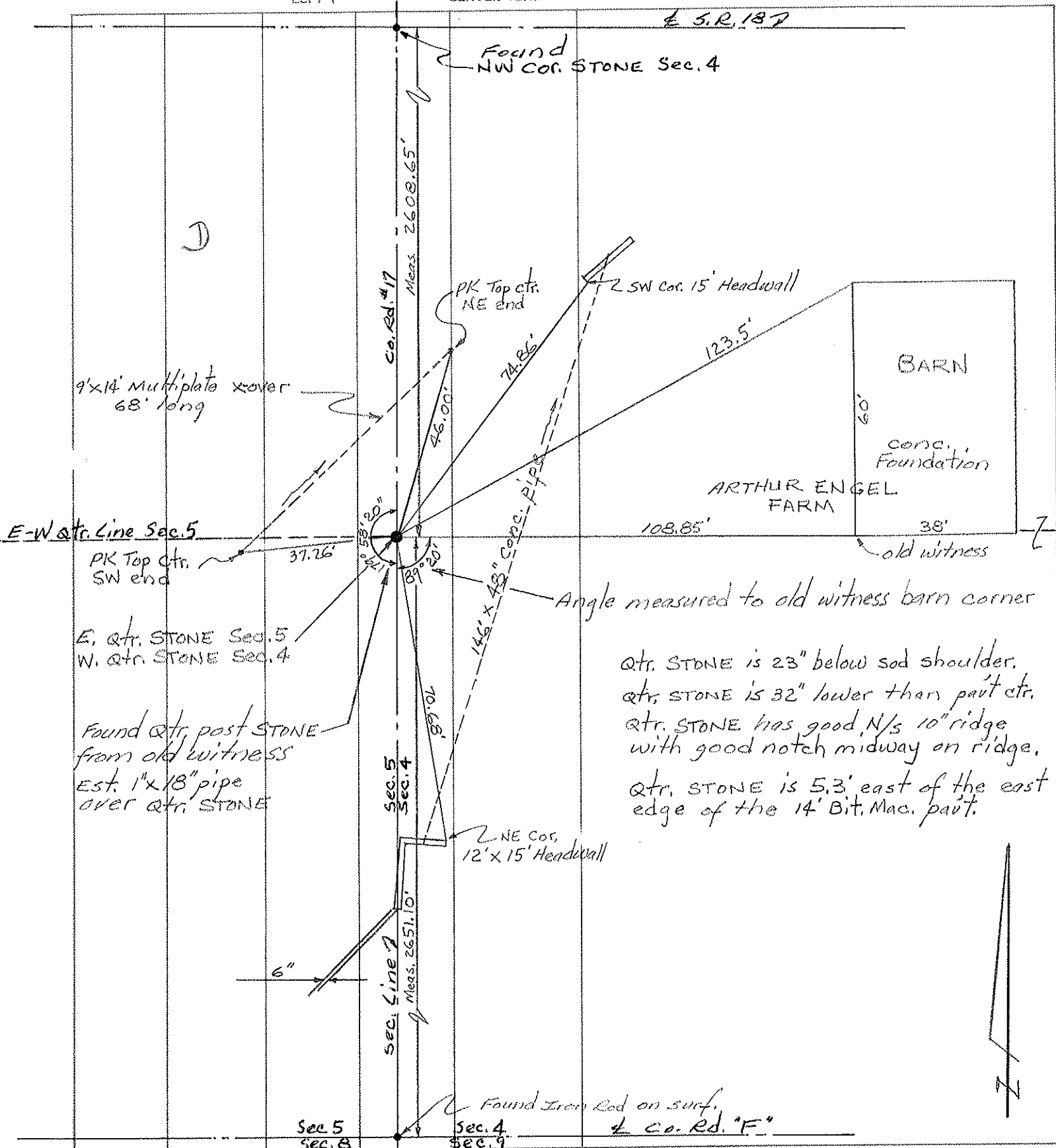
"X" Cut in Top of Headwall



PERSONNEL	TITLE	PERSONNEL	TITLE
Red Beach			
Newcomb			
Knape			
Mead			

COUNTY HENRY DATE 1 Aug '73  
 S. R. 18 WEATHER \_\_\_\_\_  
 SEC. 4 & 5 Pleasant Twp TEMP. \_\_\_\_\_

DESCRIPTION CONTROL POINTS JOB NO. \_\_\_\_\_



PERSONNEL TITLE PERSONNEL TITLE

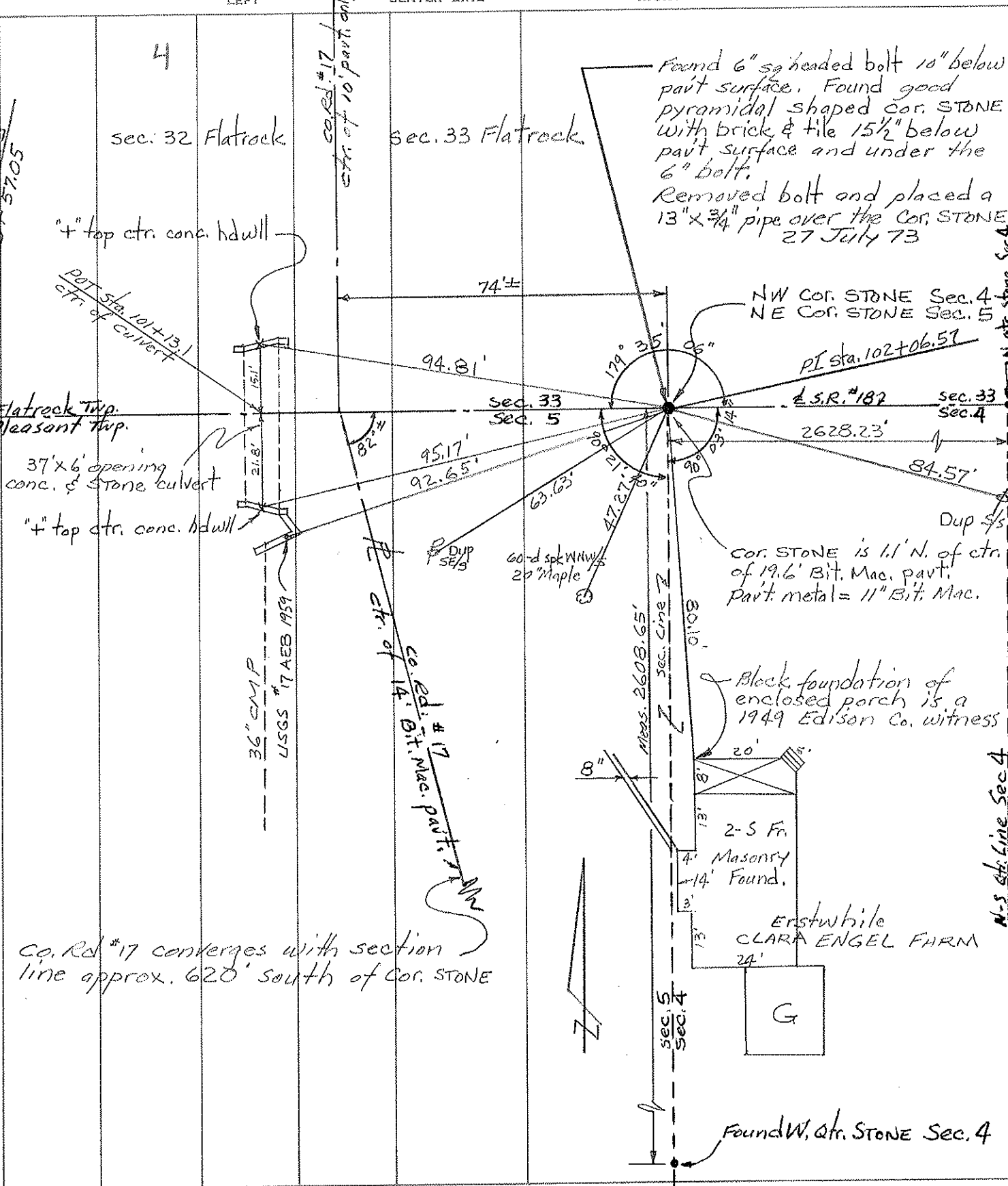
Red Beach  
Newcomb  
Knape  
Mead

COUNTY HENRY DATE 27 July 73

S. R. 18 WEATHER

SEC. 4-5 Pleasant Twp TEMP.

DESCRIPTION CONTROL POINTS JOB NO.



4

sec. 32 Flatrock

sec. 33 Flatrock

Found 6" sq headed bolt 10" below pavt surface. Found good pyramidal shaped cor. STONE with brick & tile 15 1/2" below pavt surface and under the 6" bolt.  
Removed bolt and placed a 13" x 3/4" pipe over the cor. STONE  
27 July 73

NW COR. STONE Sec. 4  
NE COR. STONE Sec. 5

Flatrock Twp.  
Pleasant Twp.

37' x 6' opening  
conc. & Stone culvert

"4" top ctr. conc. hdwall

Co. Rd #17 converges with section line approx. 620' south of Cor. STONE

Cor. STONE is 1.1' N. of ctr. of 19.6' Bit. Mac. pavt. Part. metal = 11" Bit. Mac.

Block foundation of enclosed porch is a 1949 Edison Co. witness

2-5 Fr. Masonry Found.  
ERSTWHILE CLARA ENGEL FARM

Found W. qtr. STONE Sec. 4