

O.D.O.T. DISTRICT 2 SURVEY OFFICE (USE ONLY)

PERSONNEL

REFERENCE NO. 6

SHEET 10 OF 29

NOTES MOSE
 H.C. GOLDBERG
 R.C. MOSE

DATE 9/9/09
 WEATHER CLOUDY
 TEMP. 80°

ROUTE SR 18
 COUNTY HENRY
 TOWNSHIP FLATROCK
 SECTION 33

DWG BY NIESE PID NO PID

T 4 N R 6 E

TYPE MONUMENT P.K./WASHER

ON SURFACE - ~~BELOW~~ ON

OFFSET 1.8' RT : RT

8.5' TO RT EDGE PAVEMENT

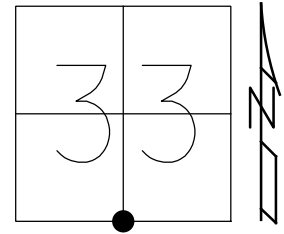
STATION: 127+68

HORZ.DATUM: NAD83(2011)

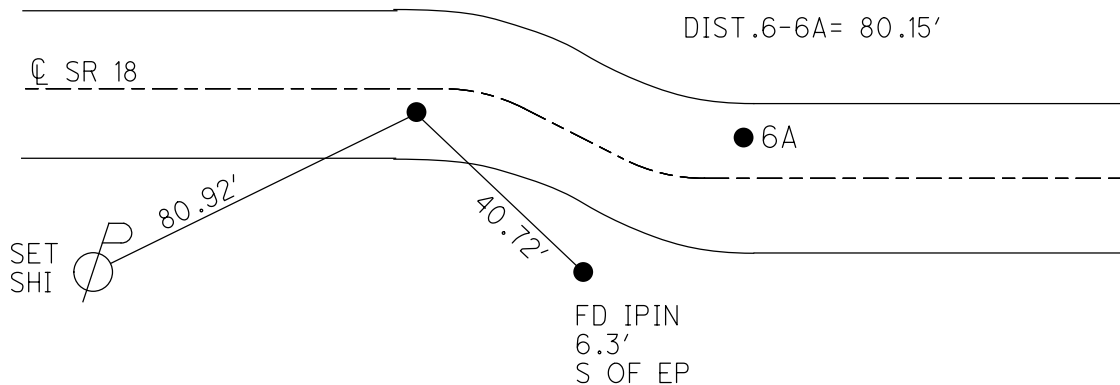
GEOID: 2012A

GRID: NORTHING: 582481.734

EASTING: 1506297.262



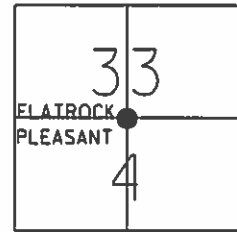
RECORD:
 FD STONE 19" DOWN
 1976
 FD P.K./WASHER
 9/9/09, KPM
 SET MAG/WASHER
 SV109
 10/20/09, KPM
 FD MAG/WASHER
 REF6
 8/6/19, JFO



O.D.O.T. DISTRICT 2 SURVEY OFFICE (USE ONLY)

PERSONNEL	REFERENCE NO. <u>6</u>	SHEET <u>10</u> OF <u>29</u>
NOTES <u> MOSER </u>	DATE <u>09-09-09</u>	ROUTE <u> SR 18 </u>
H.C. <u> GOLDBERG </u>	WEATHER <u> CLOUDY </u>	COUNTY <u> HENRY </u>
R.C. <u> MOSER </u>	TEMP. <u> +80° </u>	TOWNSHIP <u> PLEASANT </u>
		SECTION <u> 33-4 </u>
		T <u> 4 </u> N R <u> 6 </u> E

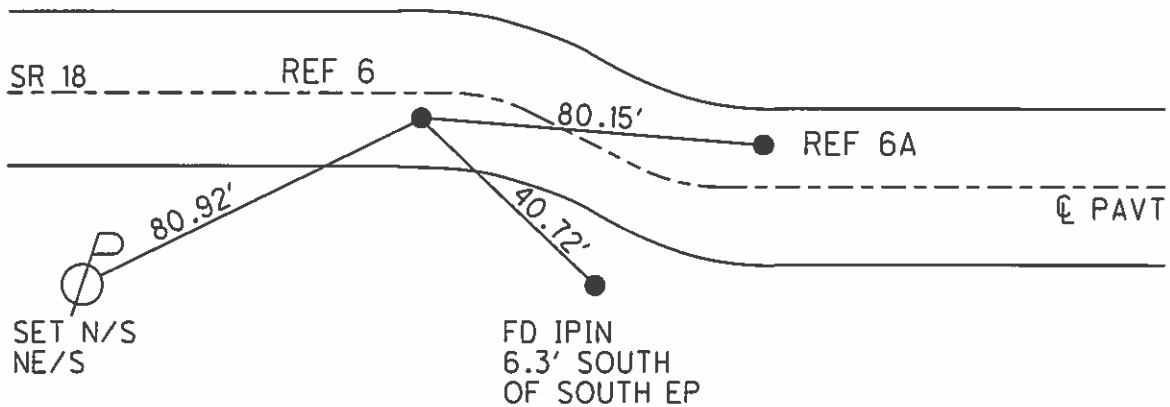
TYPE MONUMENT FD. PK/WASHER
 ON SURFACE - ~~BELOW~~ ON SURFACE
~~LEFT - C PAV'T~~ - RIGHT 1.8'
 8.5' TO RT. EDGE PAVEMENT
 S.L.M. 127+68 (SV 109)



Grid: Northing: 582481.678 Easting: 1506297.258

Record: S1/4 Post section 33
 Found stone 19" deep
 Henry Co. 1976

SET MAG/WASHER
 10-20-09 KPM



O.D.O.T. DISTRICT 2 SURVEY OFFICE

PERSONNEL

REFERENCE NO. 6-60A

SHEET 6 OF 11

NOTES VAN DUSEN

H.C. HUSS

R.C. MOSEK

DATE 5-30-95

WEATHER Sunny

TEMP. + 70°F

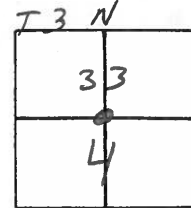
ROUTE S.R. 18

COUNTY HENRY

TOWNSHIP FLATROCK-PLEASANT

SECTION 33 - 4

T 4 N R 6 E



TYPE MONUMENT PK'S & WASHERS

ON SURFACE - BELOW YES

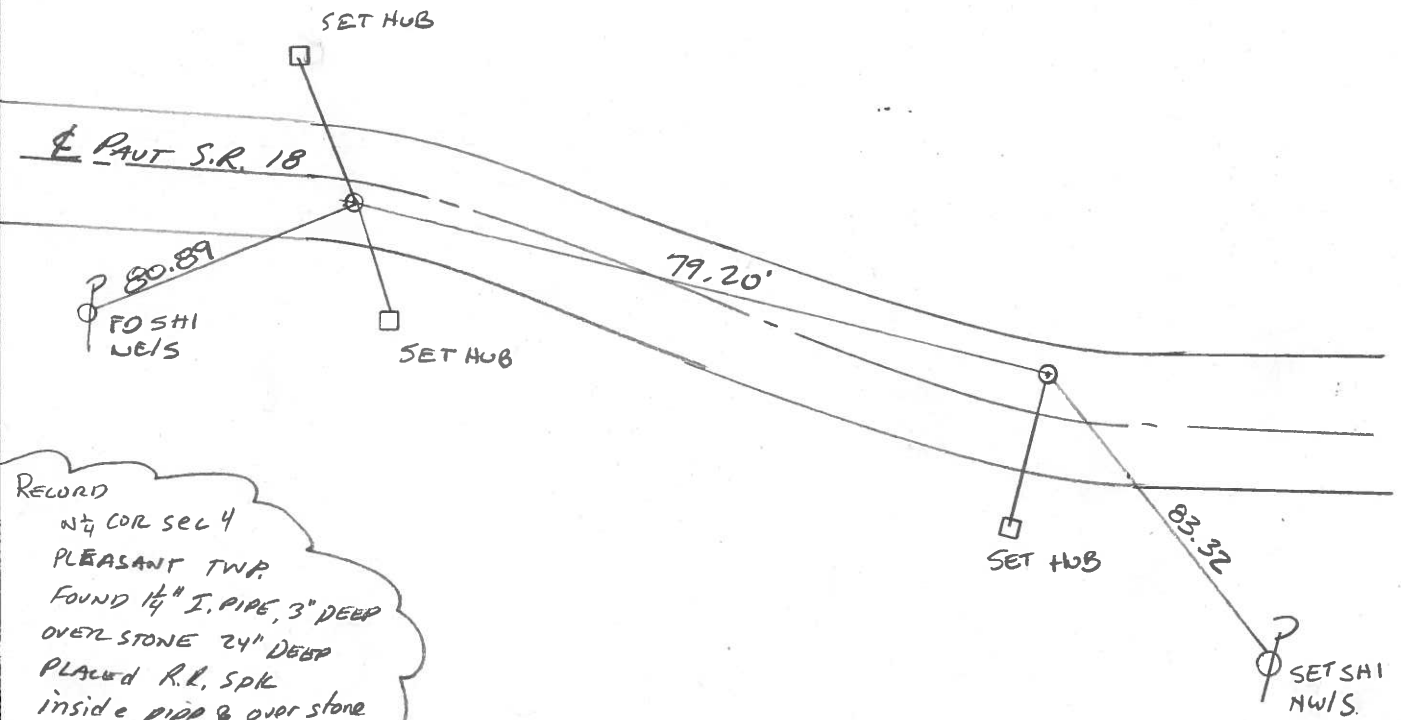
LEFT-~~E~~PAVT. - RIGHT RT. 11.6' - LT. 4.7

7.9 TO RT. EDGE PAVEMENT 4.7 LT.

S.L.M. 127+68 128+47

SET PK'S & WASHERS
8-28-95
BVD

RECORD
SW 1/4 COR SEC 33
FLATROCK TWP.
FOUND STONE 19" DEEP
HENRY CO. 1976



RECORD
NW 1/4 COR SEC 4
PLEASANT TWP.
FOUND 1 1/2" I. PIPE, 3" DEEP
OVER STONE 24" DEEP
PLACED R.L. SPK
inside pipe & over stone
HENRY CO. 1976

O.D.O.T. DISTRICT 2 SURVEY OFFICE

PERSONNEL

REFERENCE NO. 6-6A

SHEET _____ OF _____

NOTES BARNHISEL

H.C. Loehrke

R.C. SOCKMAN

DATE Aug 12, 1986

WEATHER SUNNY

TEMP. +78°

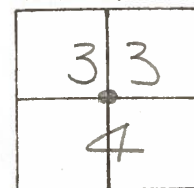
ROUTE SR 18

COUNTY HENRY

TOWNSHIP FLATROCK - PLEASANT

SECTION 33 - 4

T4 N R 6 E
T3 N



TYPE MONUMENT R.R. SPIKE - R.R. SPIKE

ON SURFACE - BELOW Yes - Yes

LEFT - C PAV'T. - RIGHT RT. 1.5' - LT. 5.0'

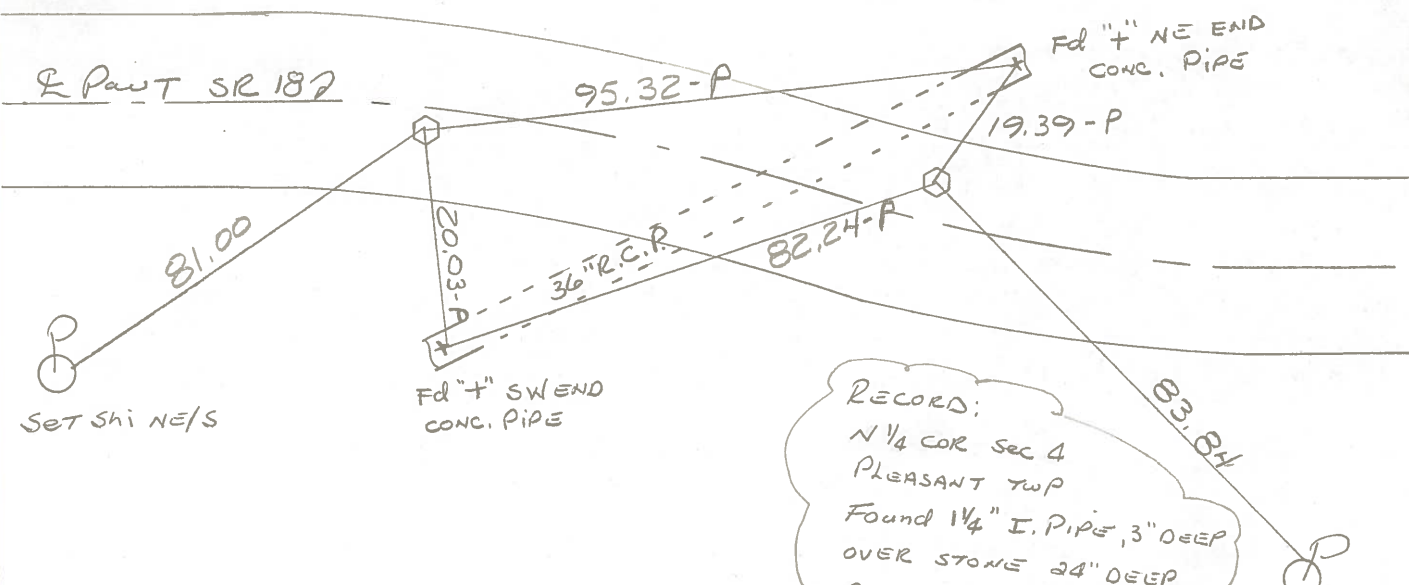
8.2 TO RT. EDGE PAVEMENT 3.7' TO LT. EP.

S.L.M. 127+51 - 128+30

79.19 BETWEEN POINTS

Set Sm RR Spk's
6-10-87
JMD/B

Henry Co. 1976
RECORDS:
S 1/4 COR Sec 33
FLATROCK TWP
FOUND STONE 19" DEEP



RECORD:
N 1/4 COR Sec 4
PLEASANT TWP
Found 1 1/4" I. PIPE, 3" DEEP
OVER STONE 24" DEEP
PLACED R.R. SPIKE INSIDE
PIPE & OVER STONE,
HENRY COUNTY 1976

HENRY COUNTY ENGINEER'S OFFICE
CORNER STONE RECOVERY PROGRAM

Sht. 3 of
S.R. 1

TOWNSHIP Flatrock

DATE 7-12-76

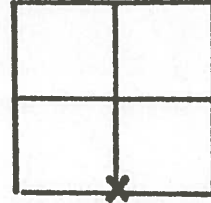
SECTION 33

WEATHER Clear - Warm

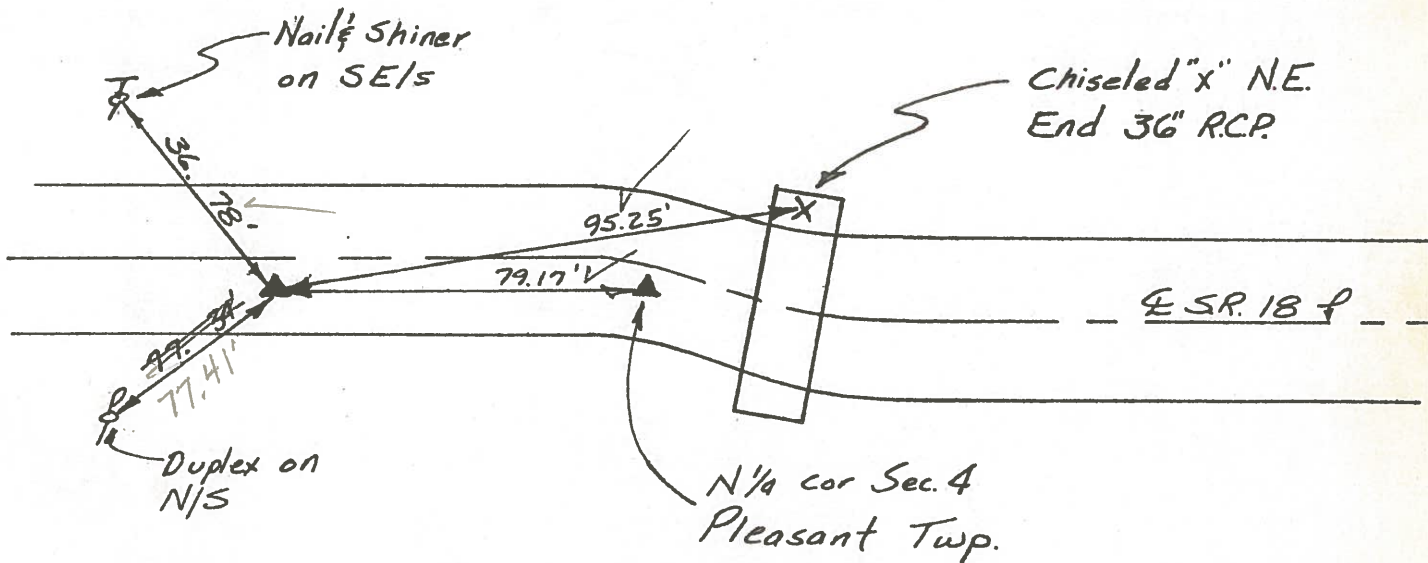
T4N, R6E

TEMP _____

PERSONNEL RS
J.G
B.B
MS
SS



~~5~~ 6-6A



Notes:

Found Stone 19" deep Surrounded w/ Fire brick. Stone is
1' South of E S.R. 18.

Copied:

Painted: 8-76

Form 200 1-0-70

HENRY COUNTY ENGINEERS' OFFICE
CORNER STONE RECOVERY PROGRAM

Sht. 4 of 4
S.R. 18

TOWNSHIP PLEASANT

DATE 6-17-76

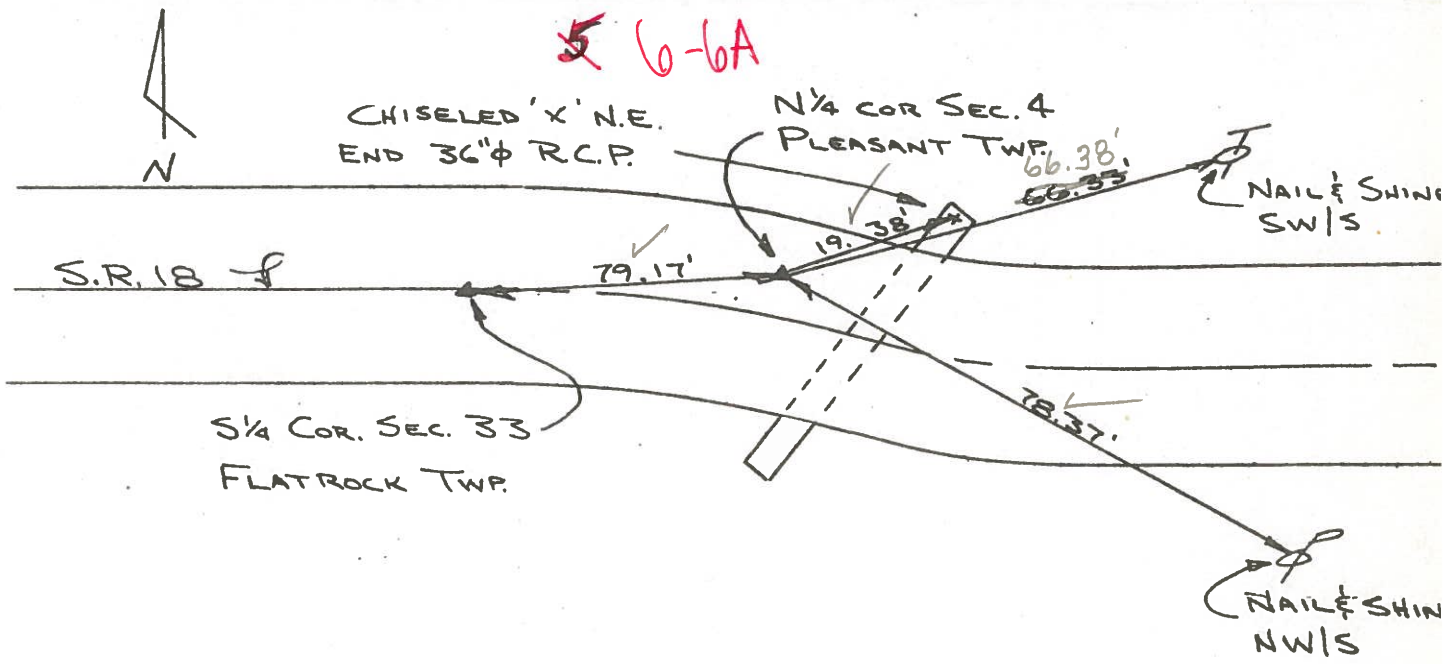
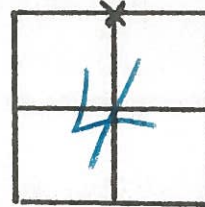
SECTION 4

WEATHER CLEAR & WARM

T3N, R6E

TEMP _____

PERSONNEL JG
BB
SS
MS



NOTE:

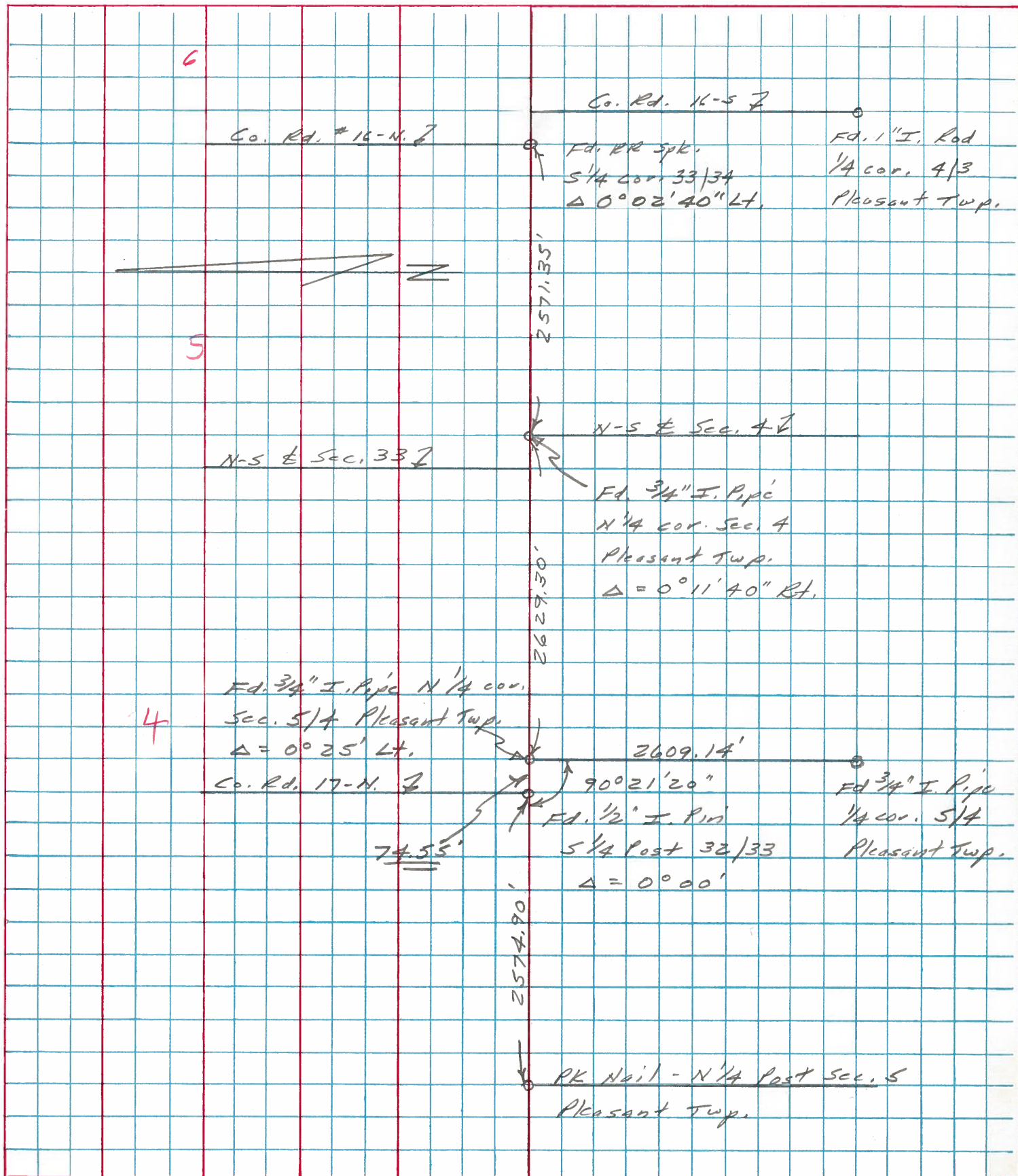
FOUND 1 ¼" IRON PIPE OVER STONE. PIPE IS 3" DEEP AND STONE IS 24" DEEP. PLACED CTR. PUNCHED R.R. SPK. INSIDE PIPE. STONE IS 4.5' SOUTH OF NORTH EDGE S.R. 18. P.K.'S 6'S & 6'E.

Copied:

Printed: 8-76

PERSONNEL	TITLE	PERSONNEL	TITLE	COUNTY	Henry	DATE	17 Oct. 79
Stone				S. R.	#18	WEATHER	Clear
Curtis				SEC.	Pleasant Twp.	TEMP.	60°
Denno							

DESCRIPTION Alignment LEFT CENTER LINE RIGHT JOB NO.



PERSONNEL	TITLE	PERSONNEL	TITLE	COUNTY	Henry	DATE	July 30, '71
W. Denno				S. R.	18	WEATHER	Warm
R. Michalak				SEC.		TEMP.	75° ±
D. Curtis							

DESCRIPTION References To Control Points JOB NO. 02999(0)

