

O.D.O.T. DISTRICT 2 SURVEY OFFICE (USE ONLY)

PERSONNEL

REFERENCE NO. 6 A

SHEET 11 OF 29

NOTES MOSER
 H.C. GOLDBERG
 R.C. MOSER

DATE 9/9/09
 WEATHER CLOUDY
 TEMP. 80°

ROUTE SR 18
 COUNTY HENRY
 TOWNSHIP PLEASANT
 SECTION 4
 T 3 N R 6 E

DWG BY NIESE PID NO PID

TYPE MONUMENT P.K./WASHER

ON SURFACE - ~~BELOW~~ ON

OFFSET CL PAVEMENT 4.8' LT : ~~RT~~

5.7' TO LT EDGE PAVEMENT

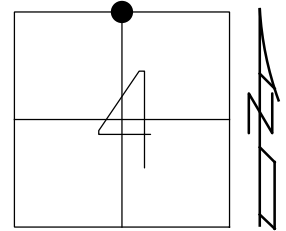
STATION: 128+47

HORZ.DATUM: NAD83(2011)

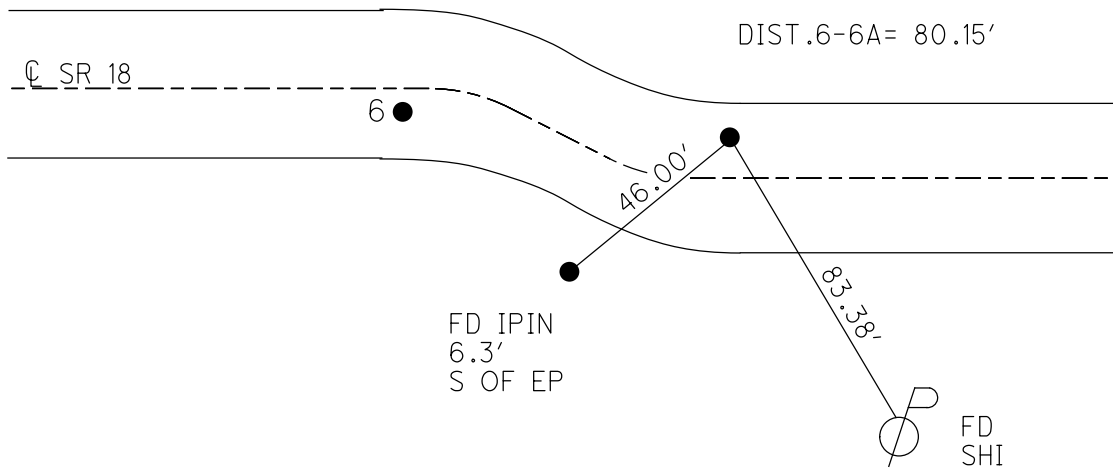
GEOID: 2012A

GRID: NORTHING: 582481.844

EASTING: 1506376.380



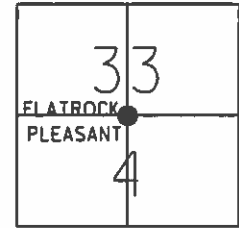
RECORD:
 FD 1 1/4" IPIPE
 3" DOWN OVER STONE
 SET R.R.SPIKE
 INSIDE IPIPE
 1976
 FD P.K./WASHER
 SV110
 9/9/09, KPM
 SET MAG/WASHER
 10/20/09, KPM
 FD MAG/WASHER
 REFA6
 8/6/19, JFO



O.D.O.T. DISTRICT 2 SURVEY OFFICE (USE ONLY)

PERSONNEL	REFERENCE NO. <u>6A</u>	SHEET <u>11</u> OF <u>29</u>
NOTES <u>MOSER</u>	DATE <u>09-09-09</u>	ROUTE <u>SR 18</u>
H.C. <u>GOLDBERG</u>	WEATHER <u>CLOUDY</u>	COUNTY <u>HENRY</u>
R.C. <u>MOSER</u>	TEMP. <u>+80°</u>	TOWNSHIP <u>PLEASANT</u>
		SECTION <u>33-4</u>
		T <u>3</u> N R <u>6</u> E

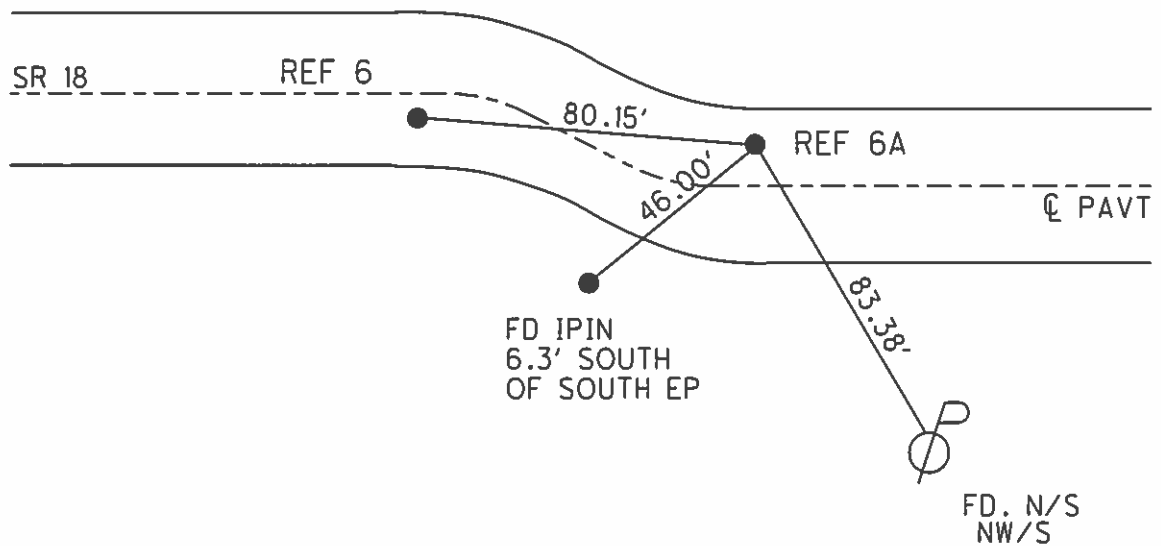
TYPE MONUMENT FD. PK/WASHER
 ON SURFACE - ~~BELOW~~ ON SURFACE
 LEFT - ~~C PAV'T - RIGHT~~ 4.8'
5.7' TO LT. EDGE PAVEMENT
 S.L.M. 128+47 (SV110)



Grid: Northing: 582481.757 Easting: 1506376.412

Record: N1/4 post section 4
 FD 1 1/4" ipipe 3" deep over
 stone, placed RSPK inside pipe
 and over stone
 Henry Co. 1976

SET MAG/WASHER
 10-20-09 KPM



O.D.O.T. DISTRICT 2 SURVEY OFFICE

PERSONNEL

REFERENCE NO. 6-60A

SHEET 6 OF 11

NOTES VAN DUSEN

H.C. HUSS

R.C. MOSEK

DATE 5-30-95

WEATHER Sunny

TEMP. + 70°F

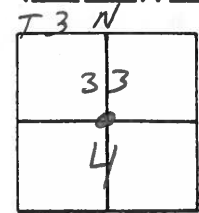
ROUTE S.R. 18

COUNTY HENRY

TOWNSHIP FLATROCK-PLEASANT

SECTION 33 - 4

T 4 N R 6 E



TYPE MONUMENT PK'S & WASHERS

ON SURFACE - BELOW YES

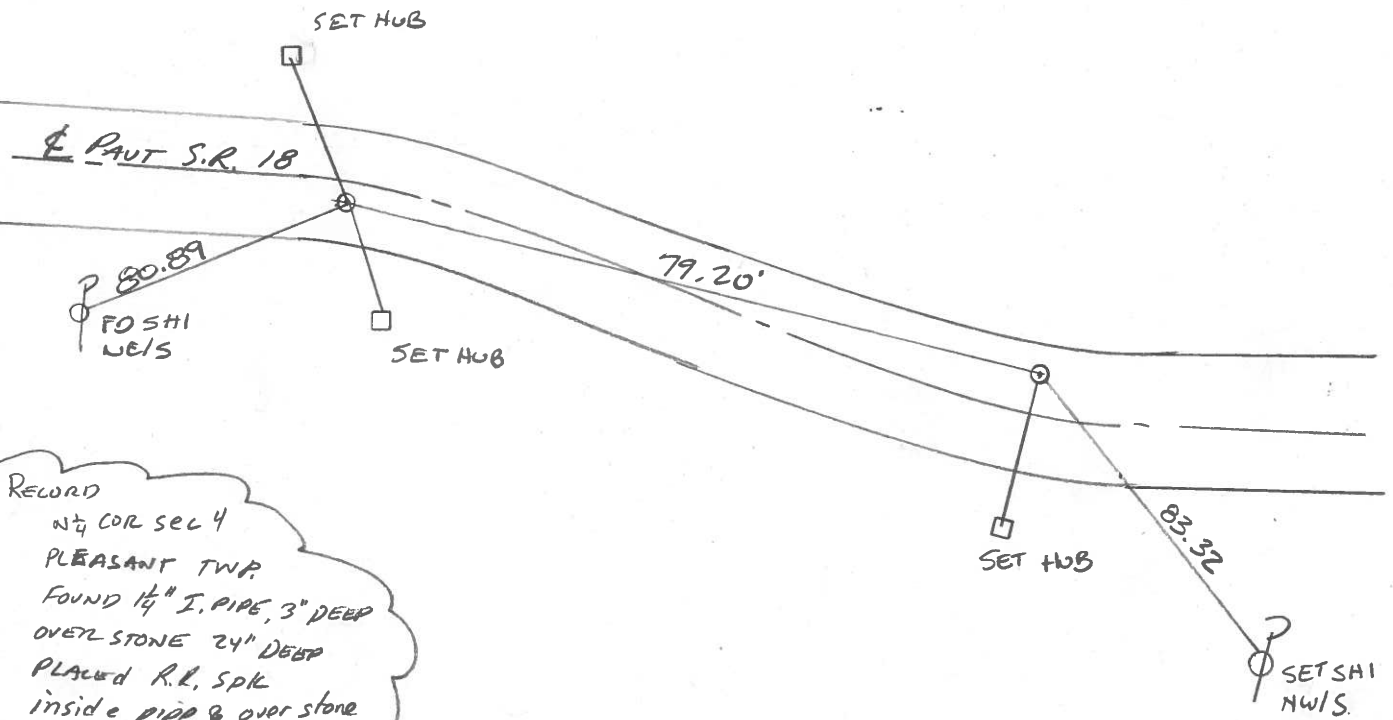
LEFT-~~E~~PAV'T. - RIGHT RT. 11.6' - LT. 4.7

7.9 TO RT EDGE PAVEMENT 4.7 LT.

S.L.M. 127+68 128+47

SET PK'S & WASHERS
8-28-95
BVD

RECORD
SW 1/4 COR SEC 33
FLATROCK TWP.
FOUND STONE 19" DEEP
HENRY CO. 1976



RECORD
NW 1/4 COR SEC 4
PLEASANT TWP.
FOUND 1 1/2" I. PIPE, 3" DEEP
OVER STONE 24" DEEP
PLACED R.L. SPK
inside pipe & over stone
HENRY CO. 1976

O.D.O.T. DISTRICT 2 SURVEY OFFICE

PERSONNEL _____

REFERENCE NO. 6-6A

SHEET _____ OF _____

NOTES BARNHISEL

H.C. Loehrke

R.C. SOCKMAN

DATE Aug 12, 1986

WEATHER SUNNY

TEMP. +78°

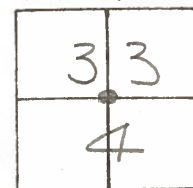
ROUTE SR 18

COUNTY HENRY

TOWNSHIP FLATROCK-PLEASANT

SECTION 33 -4

T4 N R 6 E
T3 N



TYPE MONUMENT R.R. SPIKE - R.R. SPIKE

ON SURFACE - BELOW Yes - Yes

LEFT-CL PAV'T. - RIGHT RT, 1.5' - LT, 5.0'

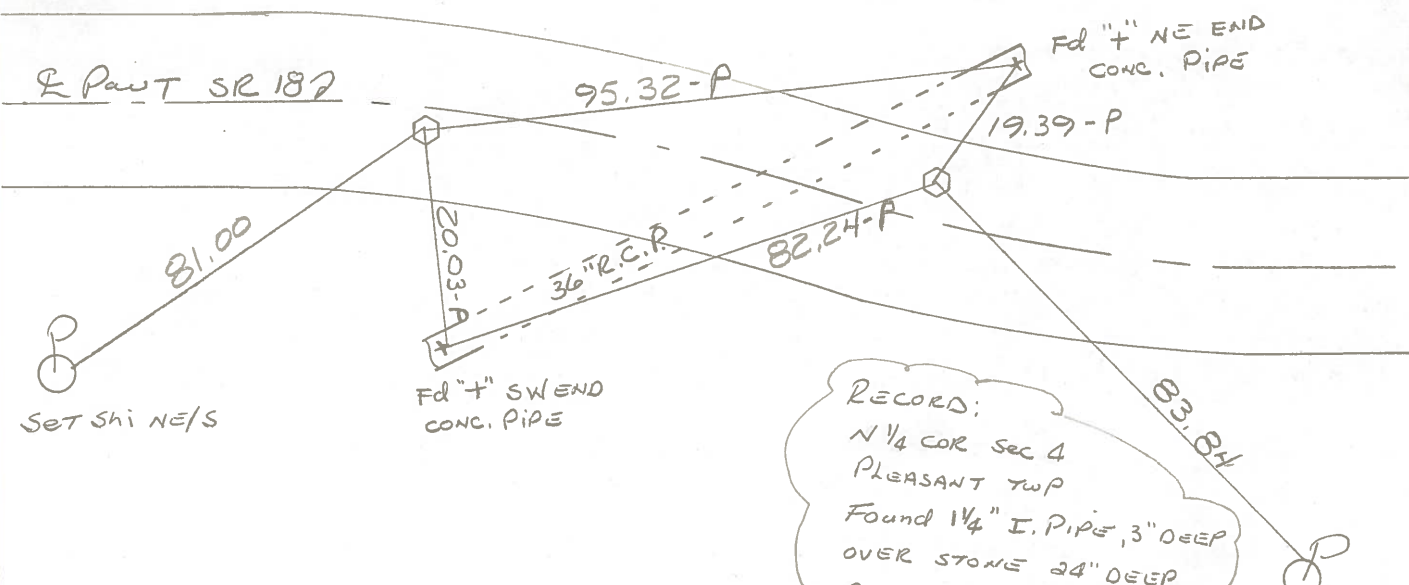
8.2 TO RT. EDGE PAVEMENT 3.7' TO LT. EP.

S.L.M. 127+51 - 128+30

79.19 BETWEEN POINTS

Set Sm RR Spk's
6-10-87
JMD/B

Henry Co. 1976
RECORDS:
S 1/4 COR Sec 33
FLATROCK TWP
FOUND STONE 19" DEEP



RECORD:
N 1/4 COR Sec 4
PLEASANT TWP
Found 1 1/4" I. PIPE, 3" DEEP
OVER STONE 24" DEEP
PLACED R.R. SPIKE INSIDE
PIPE & OVER STONE,
HENRY COUNTY 1976

Set Shi NE/S

Fd "4" SW END
CONC. PIPE

Fd "4" NE END
CONC. PIPE

Fd Duplex
N/S

HENRY COUNTY ENGINEER'S OFFICE
CORNER STONE RECOVERY PROGRAM

Sht. 3 of
S.R. 1

TOWNSHIP Flatrock

DATE 7-12-76

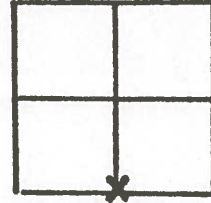
SECTION 33

WEATHER Clear - Warm

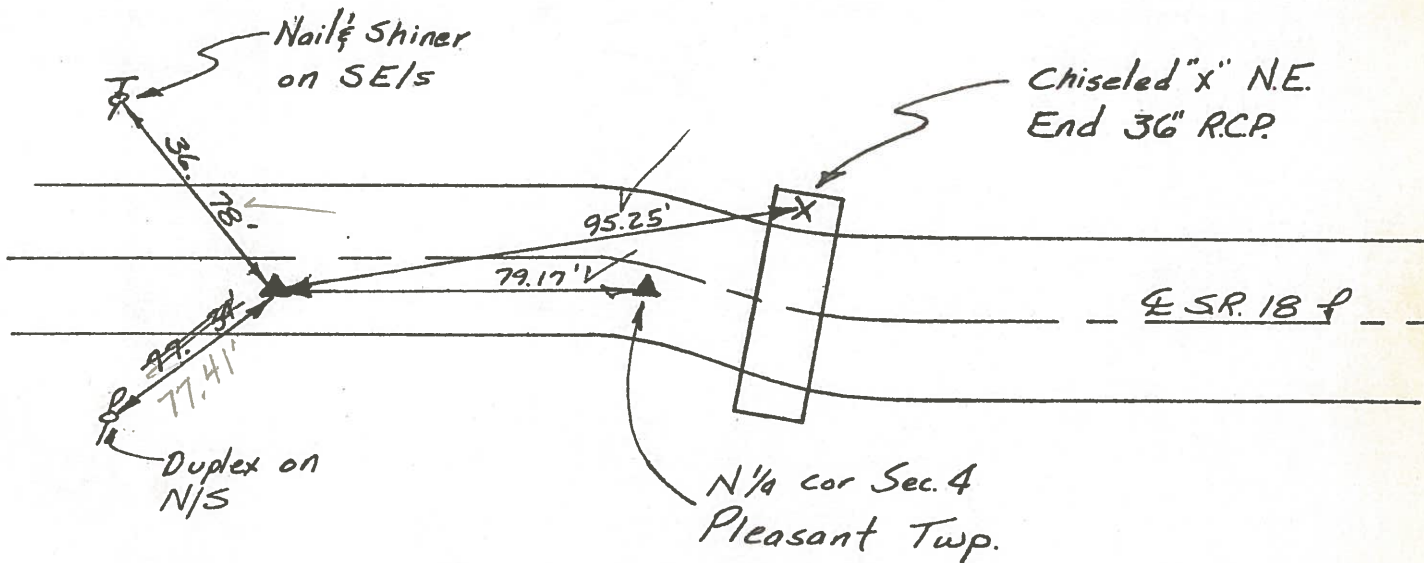
T4N, R6E

TEMP _____

PERSONNEL RS
J.G
B.B
MS
SS



~~5~~ 6-6A



Notes:

Found Stone 19" deep Surrounded w/ Fire brick. Stone is
1' South of E S.R. 18.

Copied:

Painted: 8-76

Form 200-1-0-70

HENRY COUNTY ENGINEERS' OFFICE CORNER STONE RECOVERY PROGRAM

Sht. 4 of
S.R. 18

TOWNSHIP PLEASANT

DATE 6-17-76

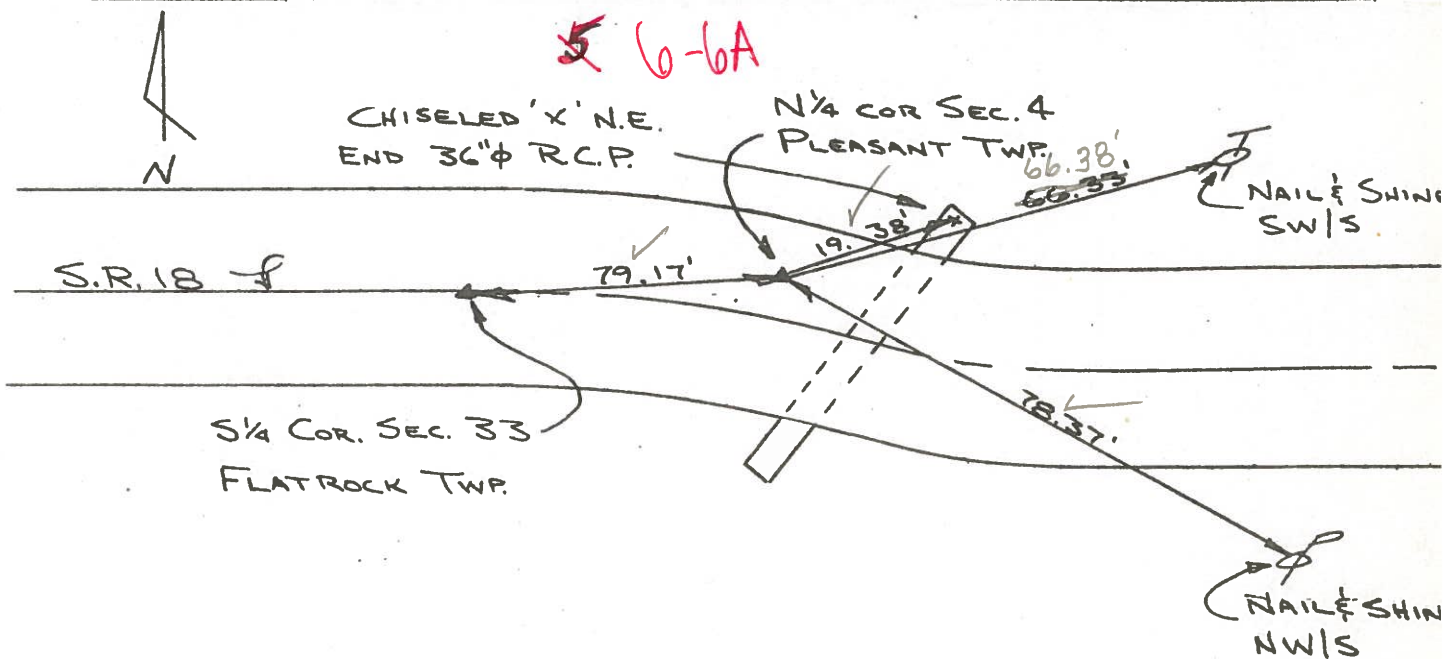
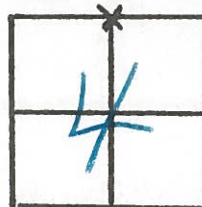
SECTION 4

WEATHER CLEAR & WARM

T3N, R6E

TEMP

PERSONNEL JG
BB
SS
MS



NOTE:

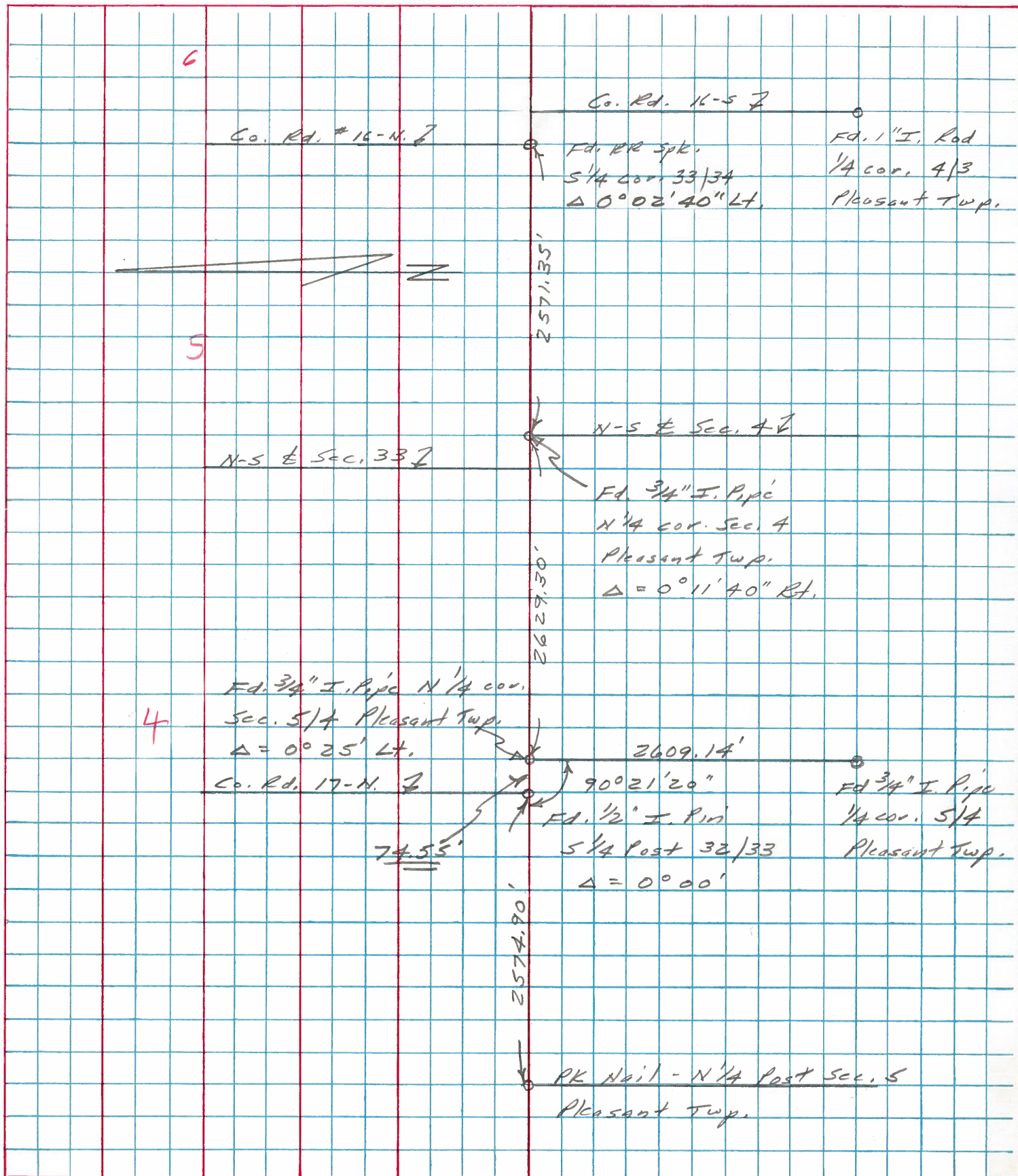
FOUND 1 1/4" IRON PIPE OVER STONE. PIPE IS 3" DEEP AND STONE IS 24" DEEP. PLACED CTR. PUNCHED, R.R. SPK. INSIDE PIPE. STONE IS 4.5' SOUTH OF NORTH EDGE S.R. 18. P.K.'S 6'S & 6'E.

Copied:

Printed: 8-76

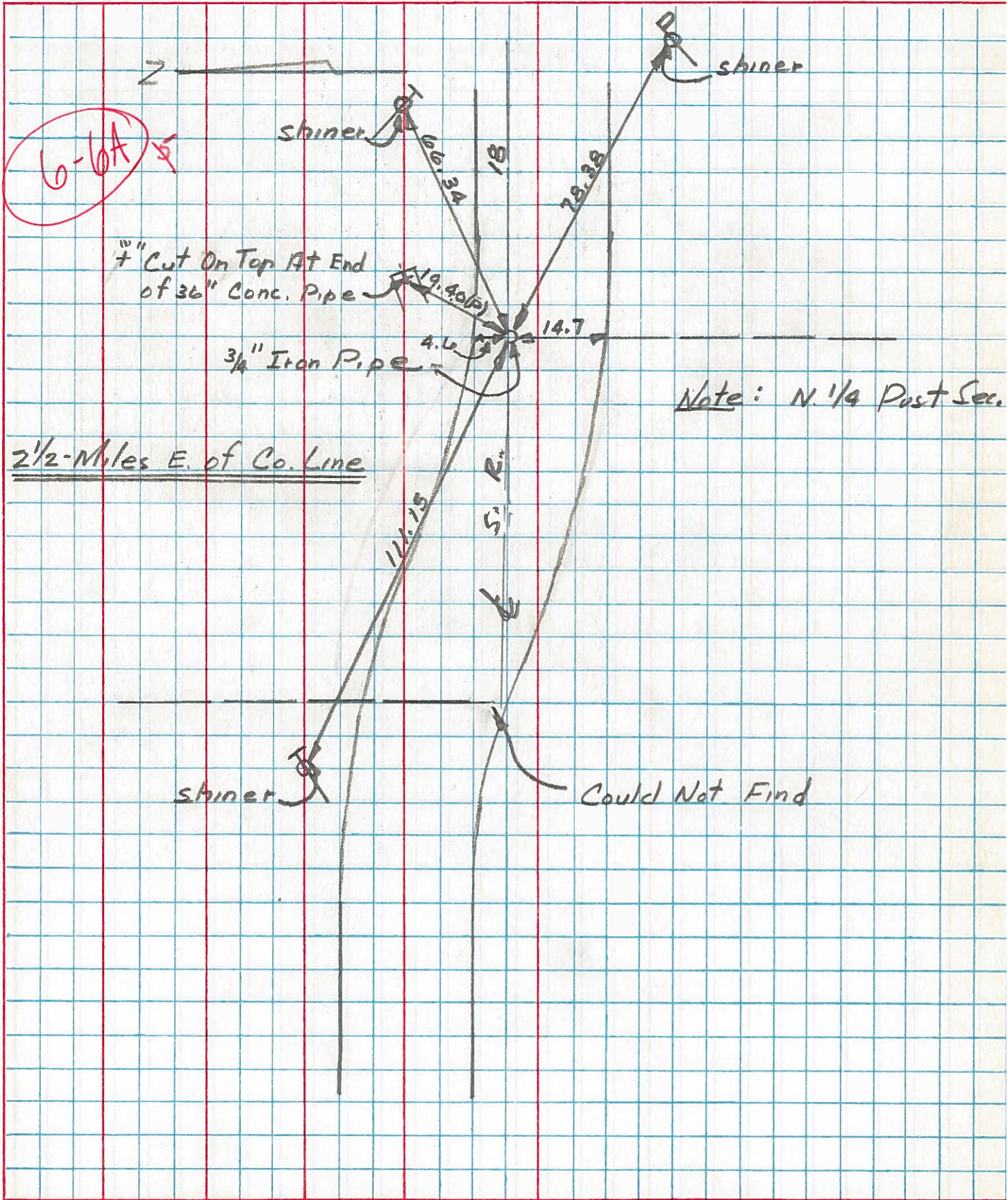
PERSONNEL	TITLE	PERSONNEL	TITLE	COUNTY	Henry	DATE	17 Oct. 79
Stone				S. R.	#18	WEATHER	Clear
Curtis				SEC.	Pleasant Twp.	TEMP.	60°
Denno							

DESCRIPTION Alignment LEFT CENTER LINE RIGHT JOB NO.



PERSONNEL	TITLE	PERSONNEL	TITLE	COUNTY	Henry	DATE	July 30, '71
W. Denno				S. R.	18	WEATHER	Warm
R. Michalak				SEC.		TEMP.	75° ±
D. Curtis							

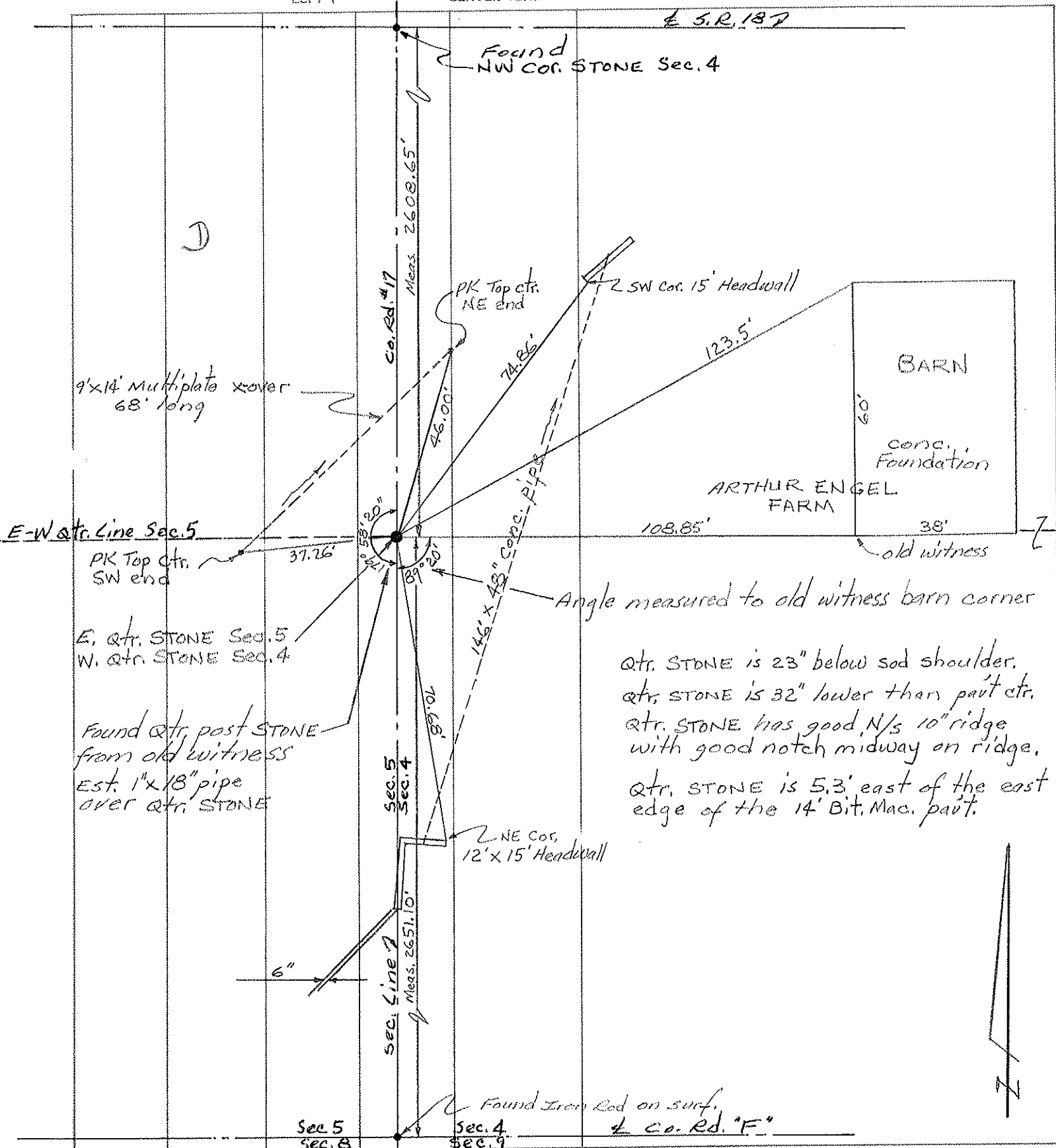
DESCRIPTION References To Control Points JOB NO. 02999(0)



PERSONNEL	TITLE	PERSONNEL	TITLE
Red Beach			
Newcomb			
Knape			
Mead			

COUNTY HENRY DATE 1 Aug '73
 S. R. 18 WEATHER _____
 SEC. 4 & 5 Pleasant Twp TEMP. _____

DESCRIPTION CONTROL POINTS JOB NO. _____



PERSONNEL TITLE PERSONNEL TITLE

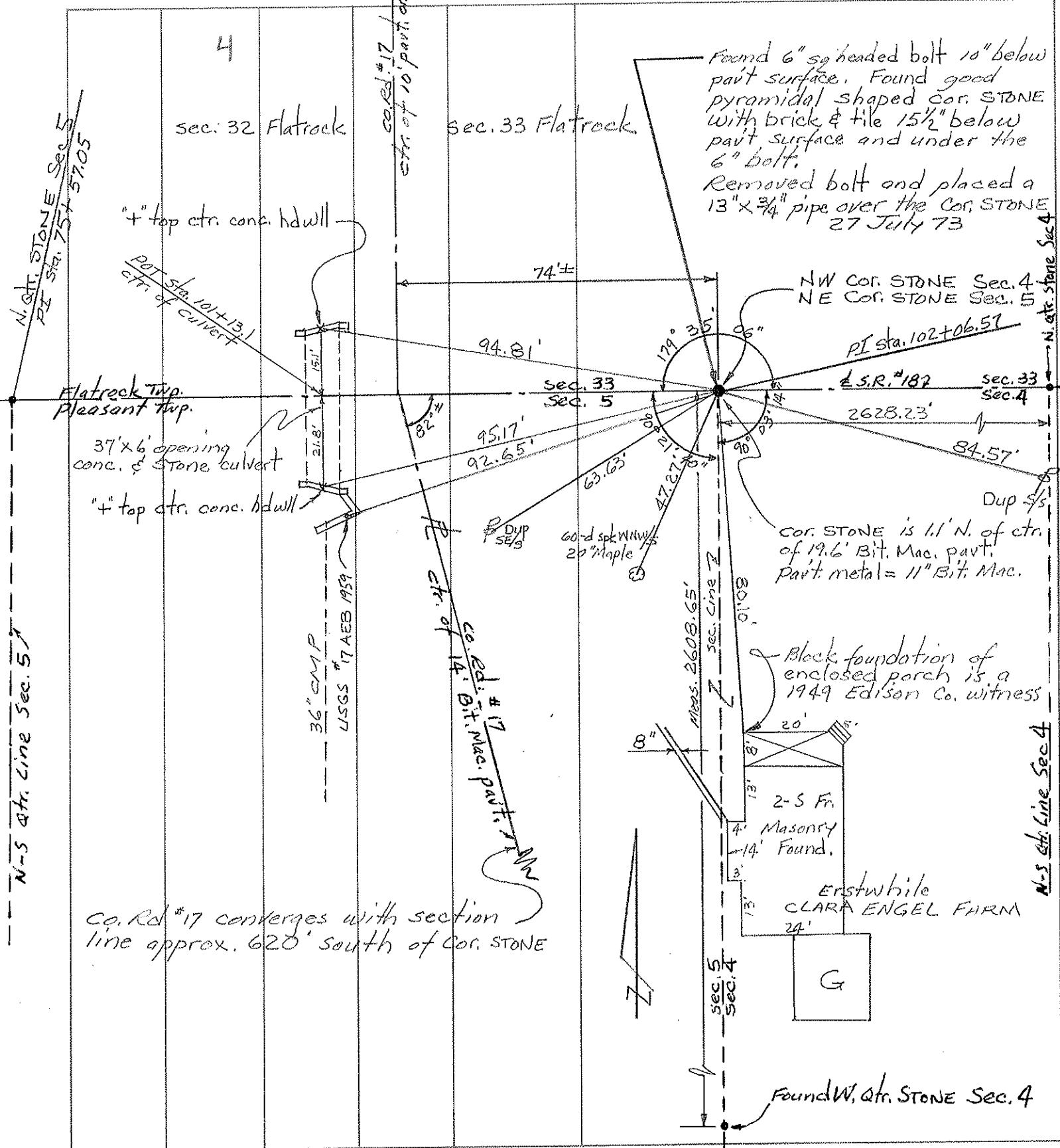
Red Beach
Newcomb
Knape
Mead

COUNTY HENRY DATE 27 July 73

S. R. 18 WEATHER _____

SEC. 4-5 Pleasant Twp TEMP. _____

DESCRIPTION CONTROL POINTS JOB NO. _____



sec. 32 Flatrock

sec. 33 Flatrock

Found 6" sq headed bolt 10" below pavt surface. Found good pyramidal shaped cor. STONE with brick & tile 15 1/2" below pavt surface and under the 6" bolt.
 Removed bolt and placed a 13" x 3/4" pipe over the cor. STONE
 27 July 73

NW Cor. STONE Sec. 4
 NE Cor. STONE Sec. 5

Cor. STONE is 1.1' N. of ctr. of 19.6' Bit. Mac. pavt. Part. metal = 11" Bit. Mac.

Block foundation of enclosed porch is a 1949 Edison Co. witness

Erstwhile CLARA ENGEL FARM

Found W. qtr. STONE Sec. 4

N. qtr. STONE Sec. 5
 PI Sta. 75+57.05

4" top ctr. conc. hdwll

pot sta. 101+13.1
 ctr. of culvert

Flatrock Twp.
 Pleasant Twp.

37' x 6' opening
 conc. & Stone culvert

4" top ctr. conc. hdwll

36" CMP
 USGS # 17 AEB 1959

Co. Rd # 17
 ctr. of 14' Bit. Mac. pavt.

Co. Rd # 17 converges with section line approx. 620' south of Cor. STONE

N. qtr. Stone Sec. 4

N-S qtr. line Sec. 4

sec. 5
 sec. 4

G