

O.D.O.T. DISTRICT 2 SURVEY OFFICE (USE ONLY)

PERSONNEL

REFERENCE NO. 7 A

SHEET 13 OF 29

NOTES MOSER

DATE 9/9/09

ROUTE SR 18

H.C. GOLDBERG

WEATHER CLOUDY

COUNTY HENRY

R.C. MOSER

TEMP. 80°

TOWNSHIP PLEASANT

DWG BY NIESE PID NO PID

SECTION 3

T 3 N R 6 E

TYPE MONUMENT P.K./WASHER

ON SURFACE - ~~BELOW~~ ON

OFFSET 8.8' ∇ PAVEMENT 1.0' ~~LT~~ : RT

8.8' TO RT EDGE PAVEMENT

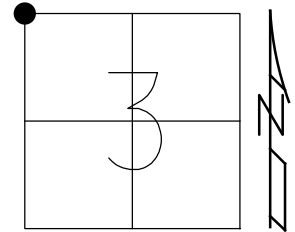
STATION: 154+82

HORZ.DATUM: NAD83(2011)

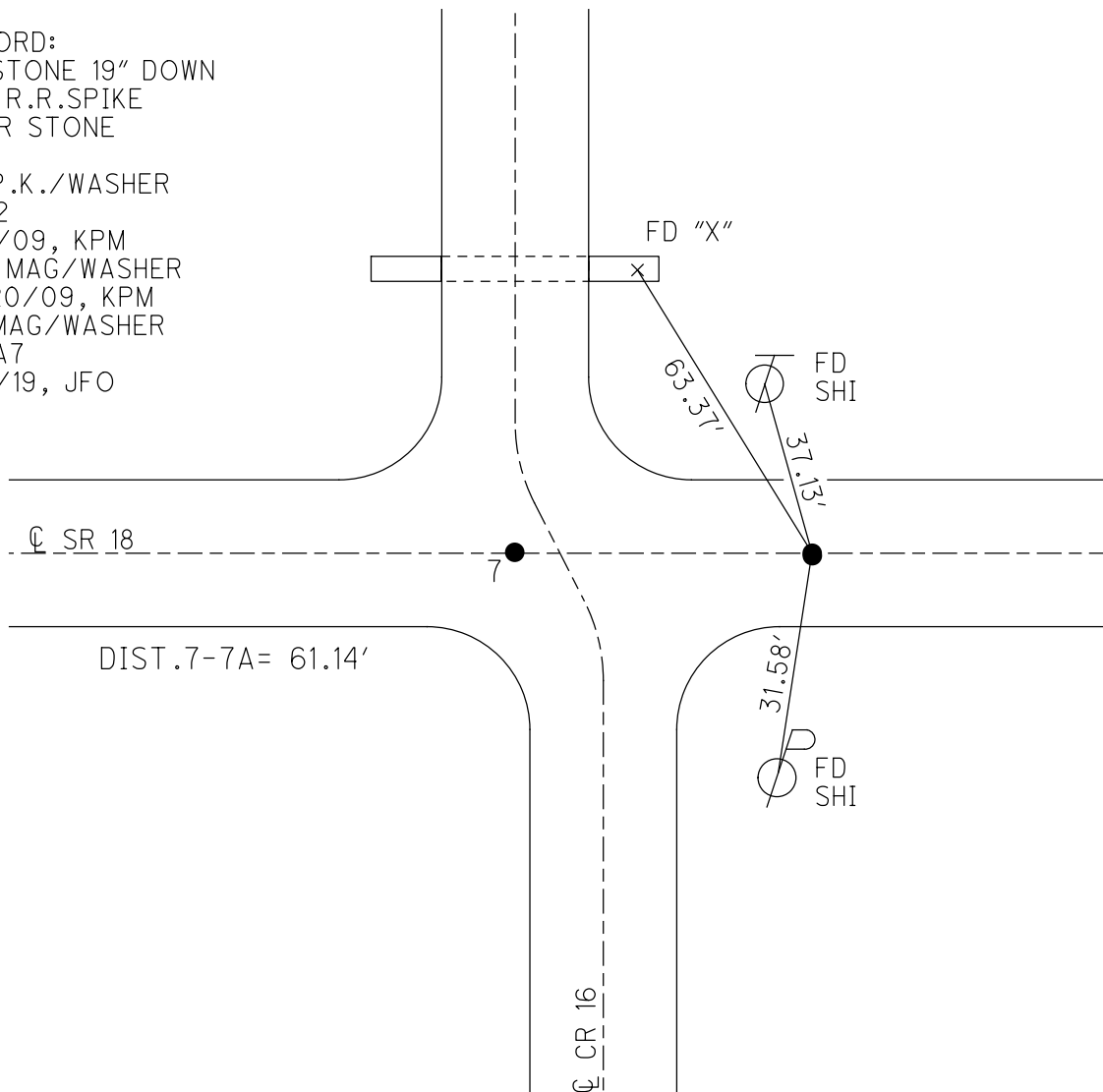
GEOID: 2012A

GRID: NORTHING: 582450.723

EASTING: 1509008.040



RECORD:
 FD STONE 19" DOWN
 SET R.R.SPIKE
 OVER STONE
 1976
 FD P.K./WASHER
 SV112
 9/9/09, KPM
 SET MAG/WASHER
 10/20/09, KPM
 FD MAG/WASHER
 REFA7
 8/6/19, JFO



O.D.O.T. DISTRICT 2 SURVEY OFFICE (USE ONLY)

PERSONNEL _____ REFERENCE NO. 7A SHEET 13 OF 29
 NOTES MOSER DATE 09-09-09 ROUTE SR 18
 H.C. GOLDBERG WEATHER CLOUDY COUNTY HENRY
 R.C. MOSER TEMP. +80° TOWNSHIP PLEASANT
 _____ SECTION 34-3
 _____ T 3 N R 6 E

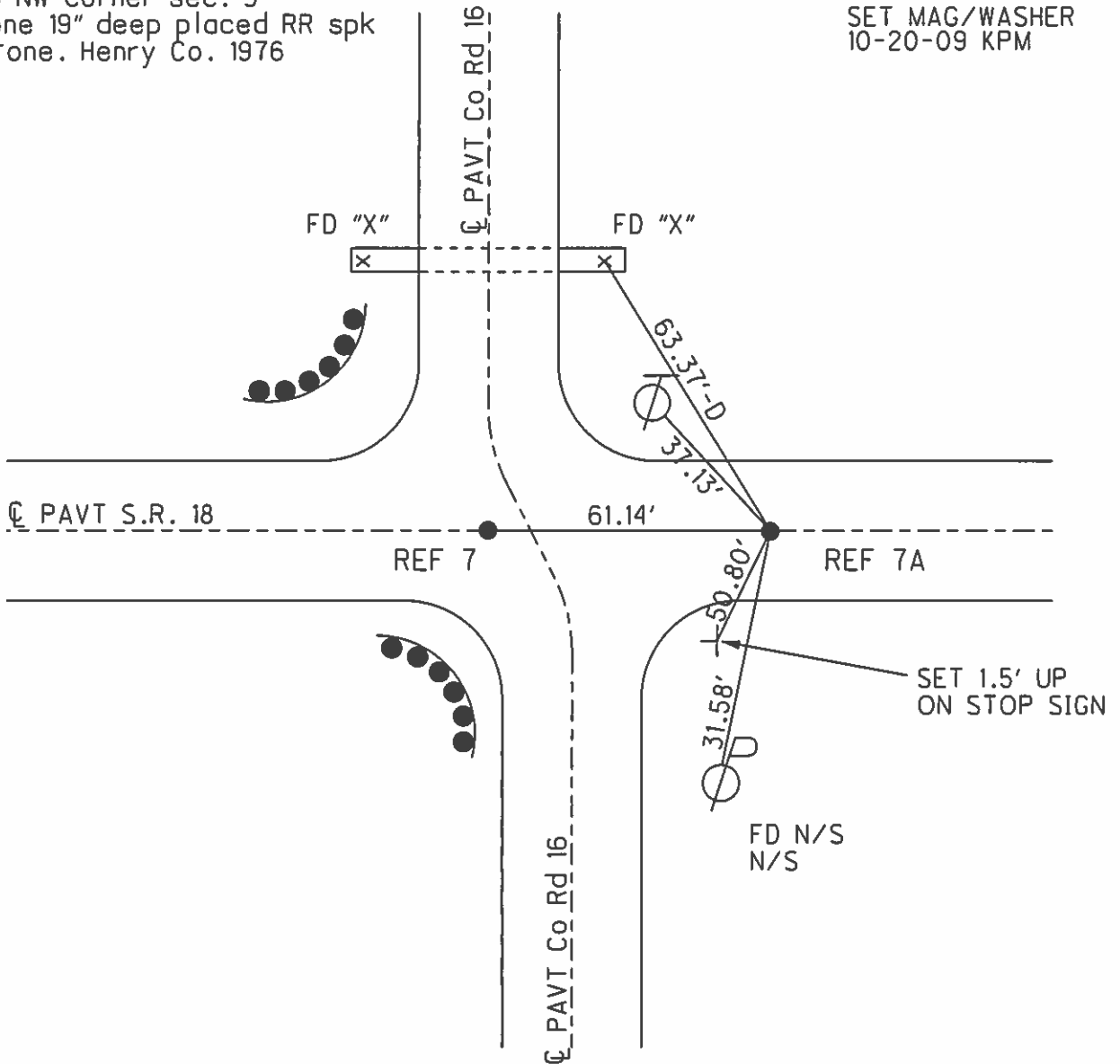
TYPE MONUMENT PK/WASHER
 ON SURFACE - ~~BELOW~~ ON SURFACE
~~LEFT - C PAV'T~~ - RIGHT 1.0'
8.8 TO RT. EDGE PAVEMENT
 S.L.M. 154+82 (SV112)

33	34
FLATROCK PLEASANT	
4	3

Grid: Northing: 582449.872 Easting: 1509007.168

Record: NW corner sec. 3
 Fd. Stone 19" deep placed RR spk
 over stone. Henry Co. 1976

SET MAG/WASHER
 10-20-09 KPM



O.D.O.T. DISTRICT 2 SURVEY OFFICE

PERSONNEL

REFERENCE NO. 7-7A

SHEET 7 OF 11

NOTES VAN DUSEN

H.C. HUSS

R.C. MOSER

DATE 5-30-95

WEATHER Sunny

TEMP. +70°F

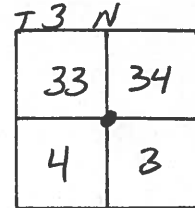
ROUTE S.R. 18

COUNTY HENRY

TOWNSHIP FLATROCK-PLEASANT

SECTION 34-3

T4 N R 6 E



TYPE MONUMENT PK's & WASHERS

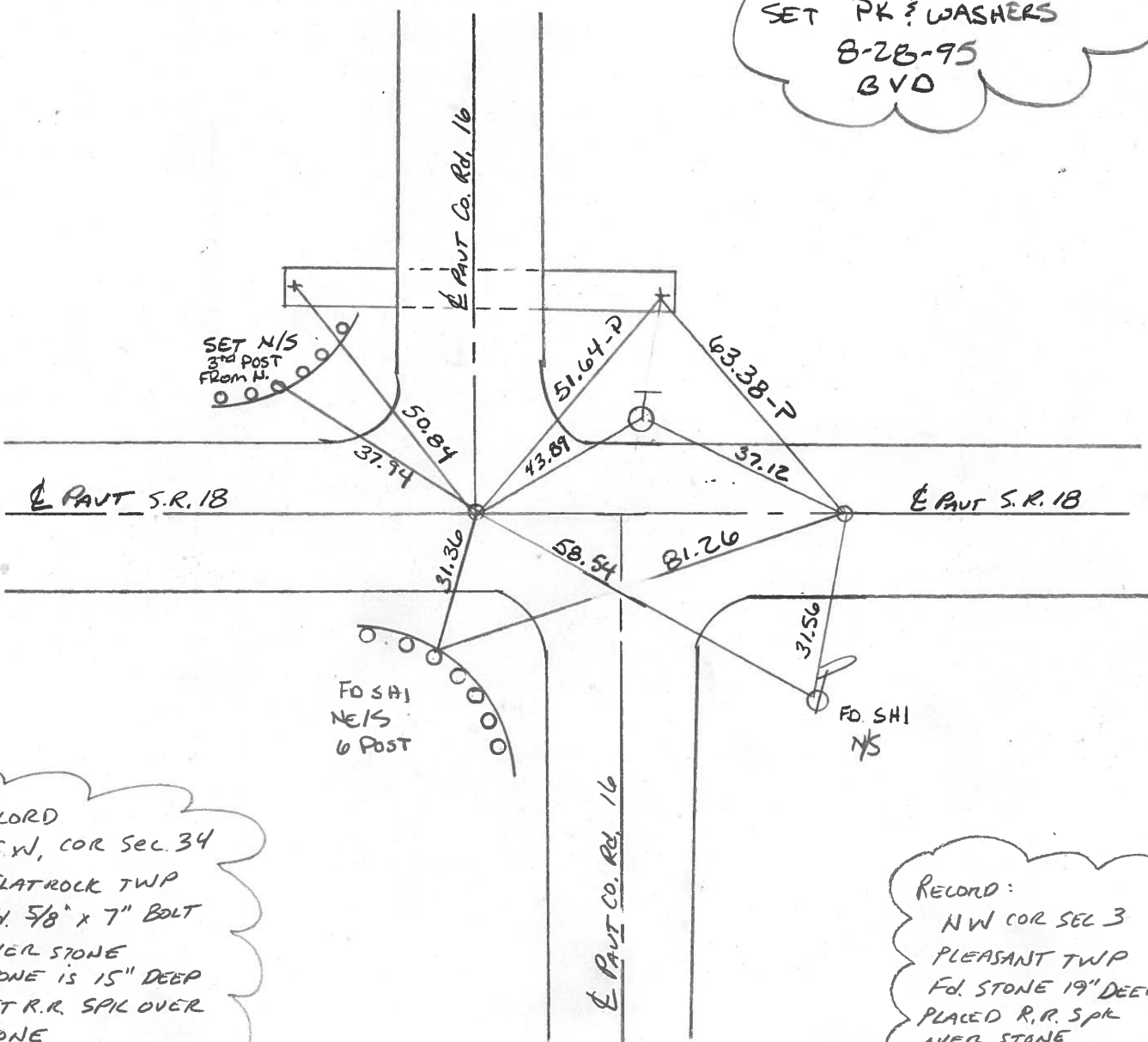
ON SURFACE - BELOW YES

LEFT - ℄ PAV'T. - RIGHT ℄ - RT. 14'

10' TO RT. EDGE PAVEMENT 8.7 RT. EP.

S.L.M. 154+22 — 154+82

SET PK's & WASHERS
8-28-95
BVD



RECORD
S.W. COR SEC. 34
FLATROCK TWP
Fd. 5/8" x 7" BOLT
OVER STONE
STONE IS 15" DEEP
SET R.R. SPIK OVER
STONE
HENRY CO. 1976

RECORD:
NW COR SEC 3
PLEASANT TWP
Fd. STONE 19" DEEP
PLACED R.R. SPIK
OVER STONE
HENRY CO. 1976

O.D.O.T. DISTRICT 2 SURVEY OFFICE

PERSONNEL _____

REFERENCE NO. 7-7A

SHEET _____ OF _____

NOTES BARNHISSEL

H.C. Loehrke

R.C. SOCKMAN

DATE Aug 12, 1986

WEATHER SUNNY

TEMP. +80°

ROUTE SR 18

COUNTY HENRY

TOWNSHIP FLATROCK-PLEASANT

SECTION 34 - 3

T4 N R 6 E
73 N

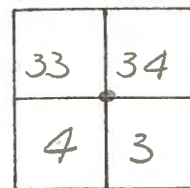
TYPE MONUMENT R.R. SPIKE - P.K.

ON SURFACE - ~~BELOW~~ yes - yes

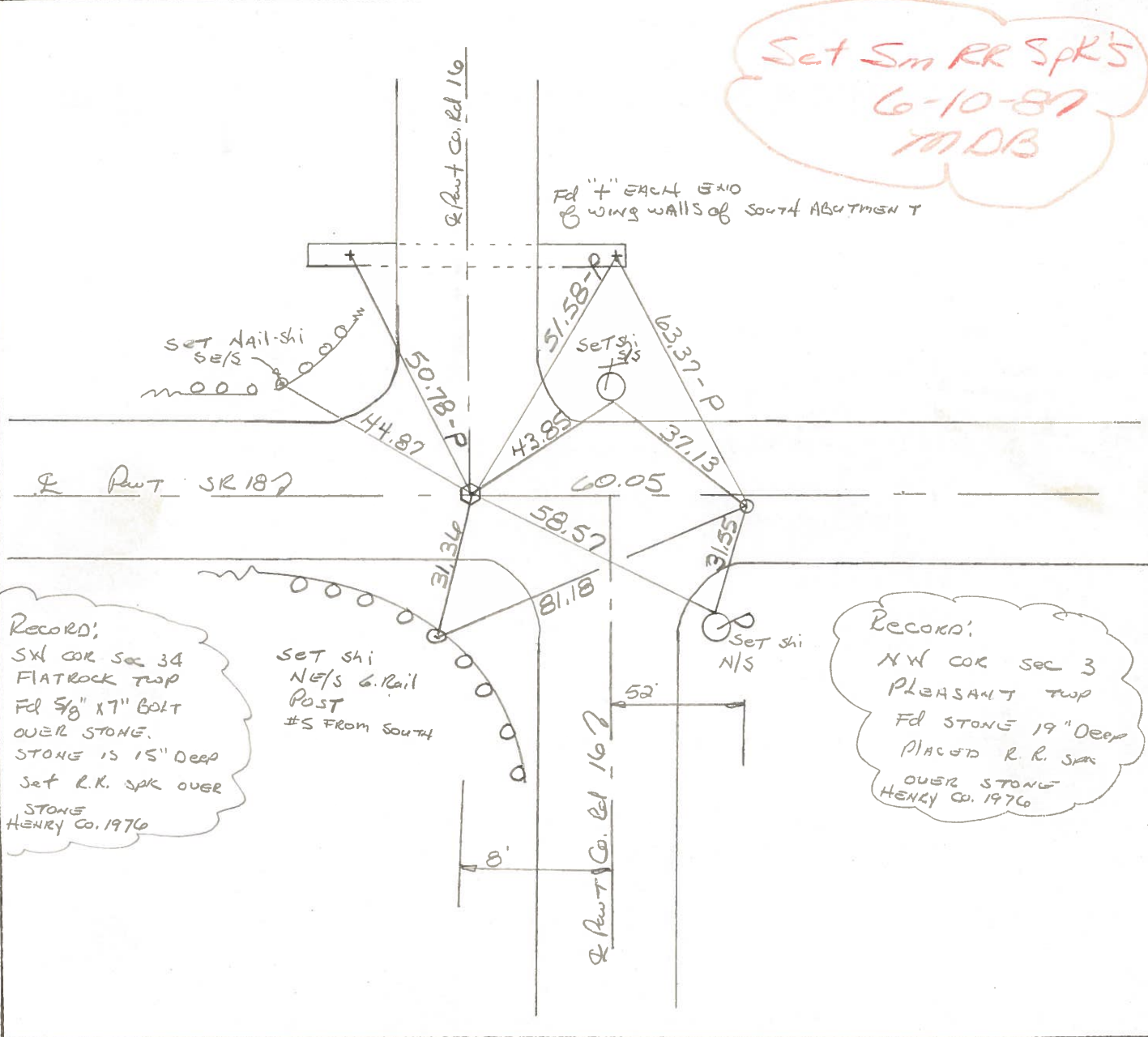
LEFT- & PAV'T. - RIGHT L - RT

9.3 TO RT. EDGE PAVEMENT

S.L.M. 154+04 - 154+64



Set Sm RR Spk's
6-10-87
MDB



RECORD:
SW COR SEC 34
FLATROCK TWP
Fd 5/8" x 7" BOLT
OVER STONE.
STONE IS 15" DEEP
Set R.R. SPK OVER
STONE
HENRY CO. 1976

Set Shi
NE/S G. Rail
Post
#5 FROM SOUTH

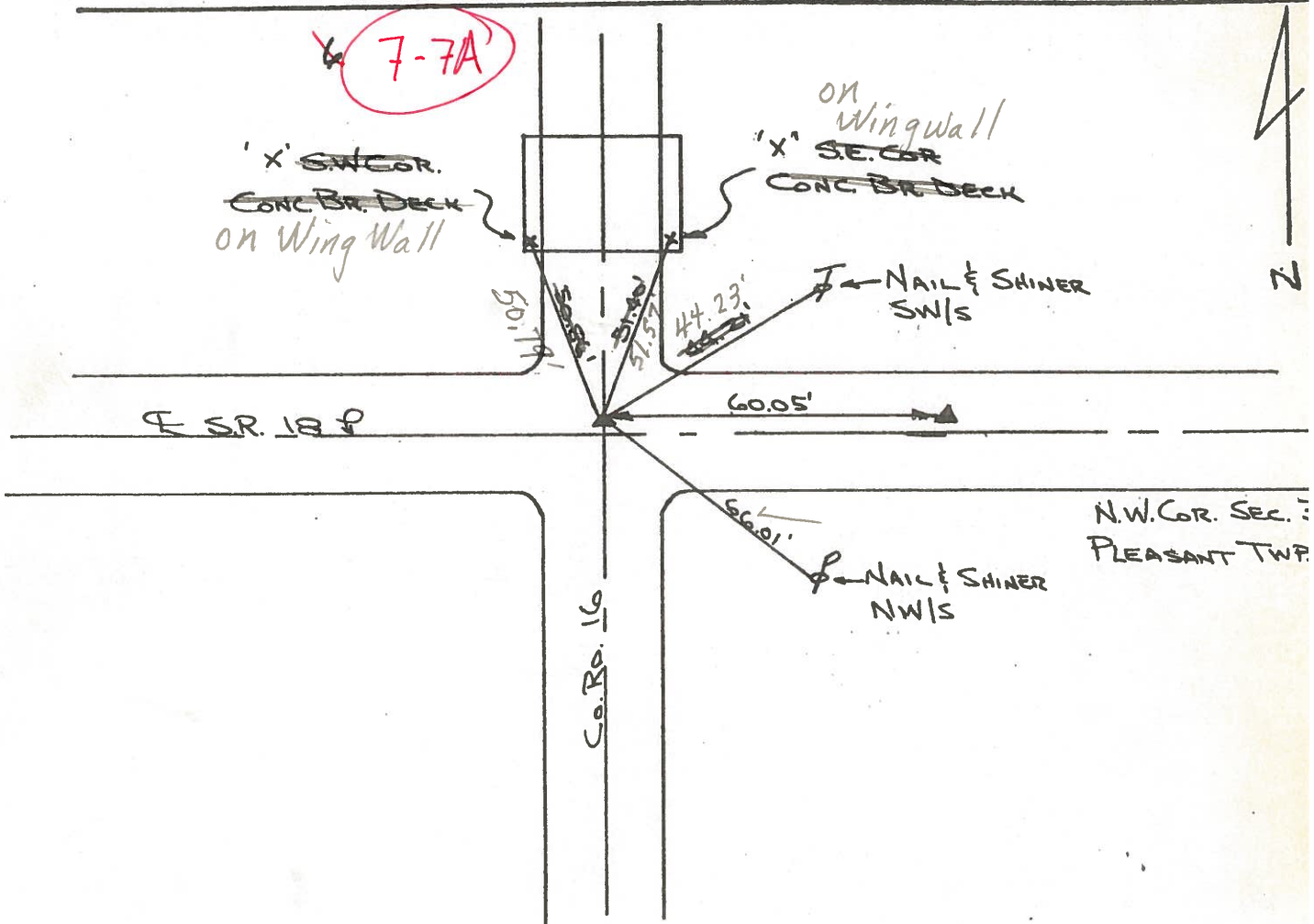
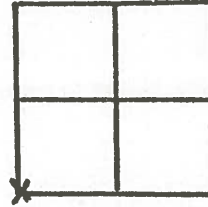
RECORD:
NW COR SEC 3
PLEASANT TWP
Fd STONE 19" DEEP
PLACED R. R. SPK
OVER STONE
HENRY CO. 1976

HENRY COUNTY ENGINEER'S OFFICE
CORNER STONE RECOVERY PROGRAM

Sht. 5 of.
S.R. 18

TOWNSHIP FLATROCK
SECTION 34
T.4N, R.6E
PERSONNEL J.G.
B.B.
M.S.
S.S.

DATE 6-15-76
WEATHER WARM & CLEAR
TEMP _____



NOTES:

FOUND RR. SPIKE ON SURFACE OVER 5" x 7" BOLT OVER STONE
STONE IS 15" DEEP. REMOVED RR. SPIKE & BOLT. REPLACED W/
CTR. PUNCHED R.R. SPK. ON SURFACE P.K.'S PLACED 6' N. & W.

Copied:

Painted: 8-76

HENRY COUNTY ENGINEER'S OFFICE CORNER STONE RECOVERY PROGRAM

Sht. 6 of
S.R. 18

TOWNSHIP PLEASANT

DATE 6-16-76

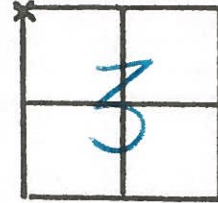
SECTION 3

WEATHER CLEAR & WARM

T. 3N, R. 6E

TEMP

PERSONNEL JG

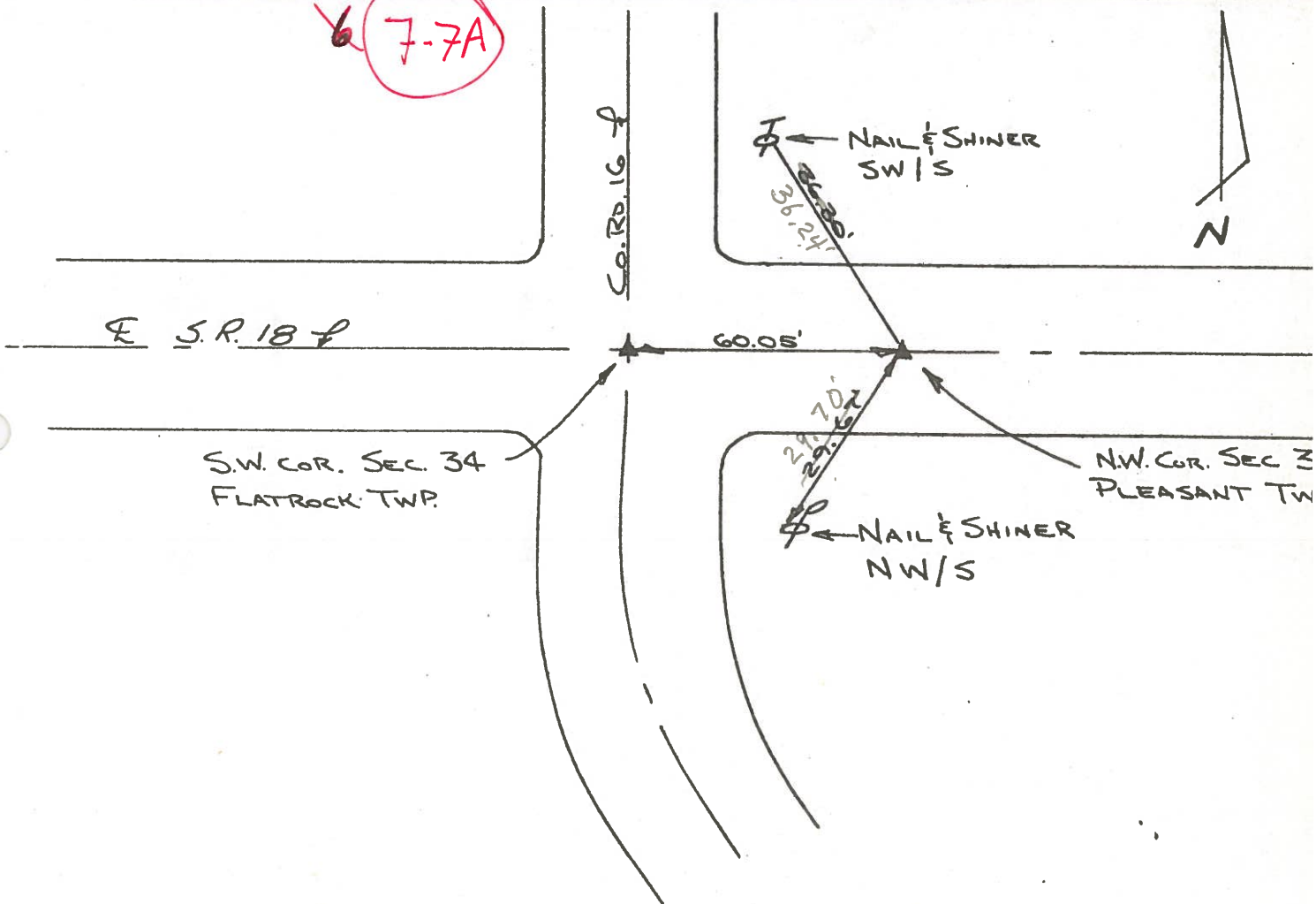


BB

SS

MS

7-7A



NOTE:

FOUND STONE 19" DEEP, PLACED CTR. PUNCHED R.R. SPK OVER STONE. P.K.'S ~~6' W~~ W & 6'S.

Copied:

Painted: 8-76

Form CSR-1 9-76

PERSONNEL TITLE PERSONNEL TITLE

Red Beach
Newcomb
Knappe
Mead

COUNTY HENRY DATE 1 Aug '73

S. R. 18 WEATHER _____

SEC. 4 & 5 Pleasant Twp TEMP. _____

DESCRIPTION _____ CONTROL POINTS _____ JOB NO. _____

LEFT | CENTER LINE | RIGHT

± S.R. 187

Found NW COR. STONE Sec. 4

D

PK Top ctr. NE end

2 SW cor. 15' Headwall

9'x14' Multiplate cover
68' long

123.5'

BARN

conc. Foundation

ARTHUR ENGEL FARM

E-W qtr. Line Sec. 5

PK Top ctr. SW end

37.26'

108.85'

38'

old witness

E. qtr. STONE Sec. 5
W. qtr. STONE Sec. 4

Angle measured to old witness barn corner

Found qtr. post STONE from old witness
Est. 1" x 18" pipe over qtr. STONE

Qtr. STONE is 23" below sod shoulder.
Qtr. STONE is 32" lower than part ctr.
Qtr. STONE has good N/S 10" ridge with good notch midway on ridge.
Qtr. STONE is 5.3' east of the east edge of the 14' Bit. Mac. part.

NE cor. 12' x 15' Headwall

6"

Sec. 5
Sec. 4
Sec. 5
Sec. 4
Sec. 5
Sec. 4
Sec. 5
Sec. 4

Found Iron Rod on surf. ± Co. Rd. 'F'



PERSONNEL TITLE PERSONNEL TITLE

Red Beach
Newcomb
Knappe
Mead

COUNTY HENRY DATE Aug 73

S. R. 18 WEATHER

SEC. S.H. 318 Sec. N TEMP

DESCRIPTION CONTROL POINTS JOB NO.

