

O.D.O.T. DISTRICT 2 SURVEY OFFICE (USE ONLY)

PERSONNEL

REFERENCE NO. 8 A

SHEET 15 OF 29

NOTES MOSE  
 H.C. GOLDBERG  
 R.C. MOSE

DATE 9/9/09  
 WEATHER CLOUDY  
 TEMP. 80°

ROUTE SR 18  
 COUNTY HENRY  
 TOWNSHIP PLEASANT  
 SECTION 3  
 T 3 N R 6 E

DWG BY NIESE PID NO PID

TYPE MONUMENT P.K./WASHER

ON SURFACE - ~~BELOW~~ ON

OFFSET  $\odot$  PAVEMENT 4.6' ~~LT~~ : RT

4.7' TO RT EDGE PAVEMENT

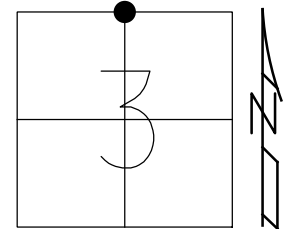
STATION: 181+40

HORZ.DATUM: NAD83(2011)

GEOID: 2012A

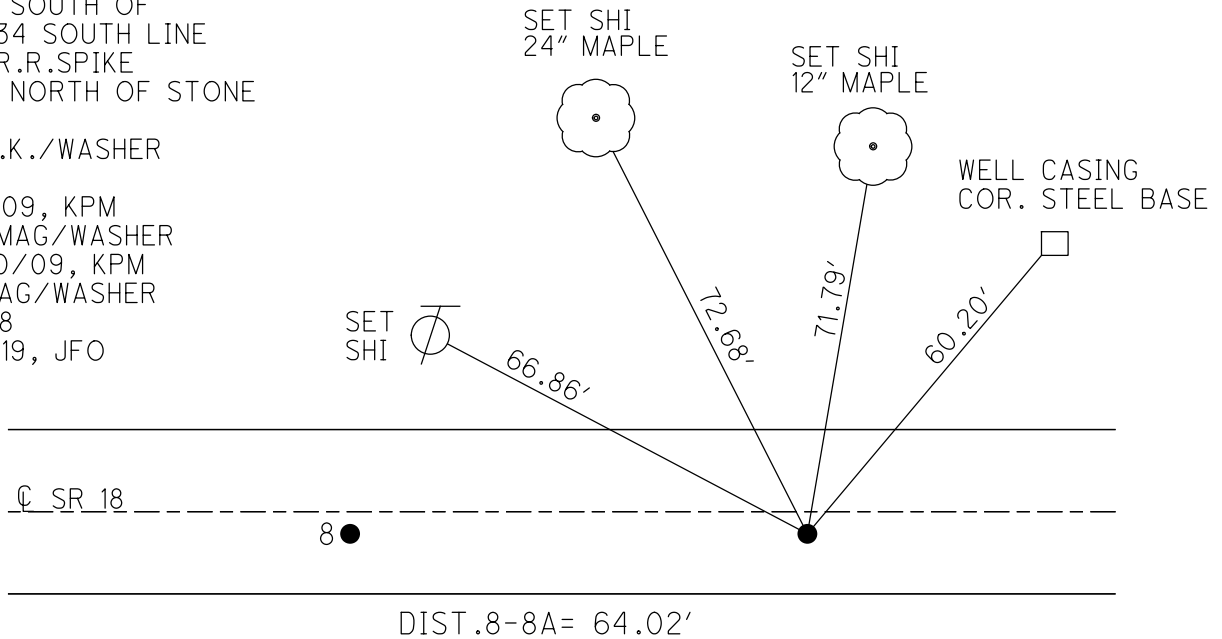
GRID: NORTHING: 582420.368

EASTING: 1511661.538



RECORD:

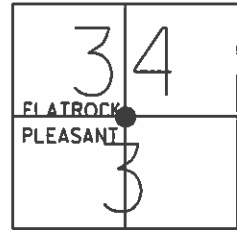
FD STONE 12" DOWN  
 1.50' SOUTH OF  
 SEC 34 SOUTH LINE  
 SET R.R.SPIKE  
 1.50' NORTH OF STONE  
 1983  
 FD P.K./WASHER  
 SV114  
 9/9/09, KPM  
 SET MAG/WASHER  
 10/20/09, KPM  
 FD MAG/WASHER  
 REFA8  
 8/6/19, JFO



O.D.O.T. DISTRICT 2 SURVEY OFFICE (USE ONLY)

PERSONNEL \_\_\_\_\_ REFERENCE NO. 8A SHEET 15 OF 29  
 NOTES MOSER DATE 09-09-09 ROUTE SR 18  
 H.C. GOLDBERG WEATHER CLOUDY COUNTY HENRY  
 R.C. MOSER TEMP. +80° TOWNSHIP PLEASANT  
 \_\_\_\_\_ SECTION 34-3  
 \_\_\_\_\_ T 3 N R 6 E

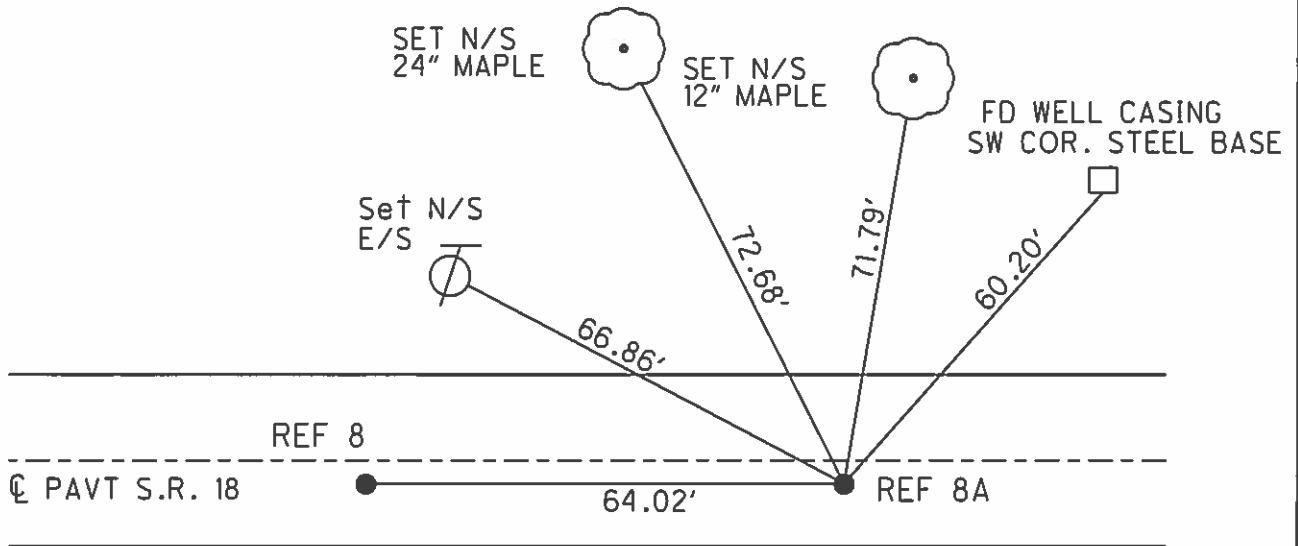
TYPE MONUMENT PK/WASHER  
 ON SURFACE - ~~BELOW~~ ON SURFACE  
~~LEFT - C PAV'T~~ - RIGHT 4.6'  
4.7' TO RT. EDGE PAVEMENT  
 S.L.M. 181+40 (SV114)



Grid: Northing: 582420.315 Easting: 1511661.422

Record: N1/4 cor. sec.3 pleasant twp  
 fd. stone 12" deep and 1.50'  
 south of south line of sec. 34  
 flatrock twp. Placed RR spk on surface  
 1.50' North of stone. Henry Co. 1983

SET MAG/WASHER  
 10-20-09 KPM



# O.D.O.T. DISTRICT 2 SURVEY OFFICE

PERSONNEL

REFERENCE NO. 8-8A

SHEET 8 OF 11

NOTES HOSS

H.C. VAN DUSEN

DATE 5-30-95

ROUTE S.R. 18

R.C. MOSER

WEATHER SUNNY

COUNTY HENRY

TEMP. +70°F

TOWNSHIP FLATROCK - PLEASANT

SECTION 34-3

T 4 N R 6 E  
T 3 N

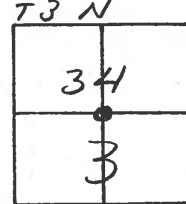
TYPE MONUMENT PK & WASHERS

ON SURFACE - ~~BELOW~~ YES - Yes

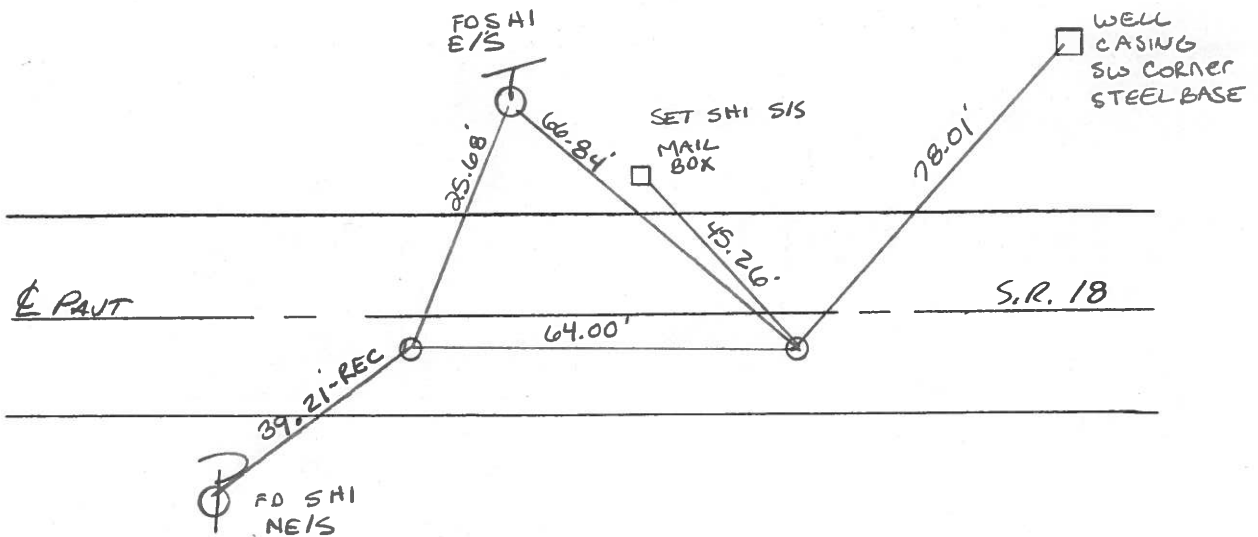
~~LEFT - C PAV'T.~~ - RIGHT 4.7' ~ 4.6'

4.7' TO RT EDGE PAVEMENT

S.L.M. 180+76 ~ 181+40.



SET PK & WASHERS  
8-28-95  
SAH



**RECORD**

Fd. P.K. OVER R.R. SPIKE  
OVER STONE  
STONE IS 7" DEEP  
S 1/4 COR SEC 34  
FLATROCK TWP  
HENRY CO. 1976

**RECORD**

N 1/4 COR SEC. 3  
PLEASANT TWP  
Fd. STONE 12" BELOW SURFACE  
1/2 150' SOUTH OF SOUTH LINE  
OF SEC. 34 FLATROCK TWP,  
PLACED R.R. SPIKE ON SURFACE,  
150' NORTH OF STONE  
HENRY CO. 1983

**O.D.O.T. DISTRICT 2 SURVEY OFFICE**

PERSONNEL \_\_\_\_\_

REFERENCE NO. 8-8A

SHEET \_\_\_\_\_ OF \_\_\_\_\_

NOTES BARNHISEL

H.C. Loehrke

R.C. SOCKMAN

DATE Aug 12, 1986

WEATHER SUNNY

TEMP. +82°

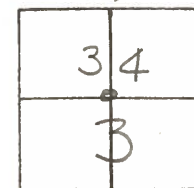
ROUTE SR 18

COUNTY HENRY

TOWNSHIP FLATROCK-PLEASANT

SECTION 34 - 3

T 4 N R 6 E  
F 3 N



TYPE MONUMENT R.R. SPIKE - R.R. SPIKE

ON SURFACE - BELOW yes - yes

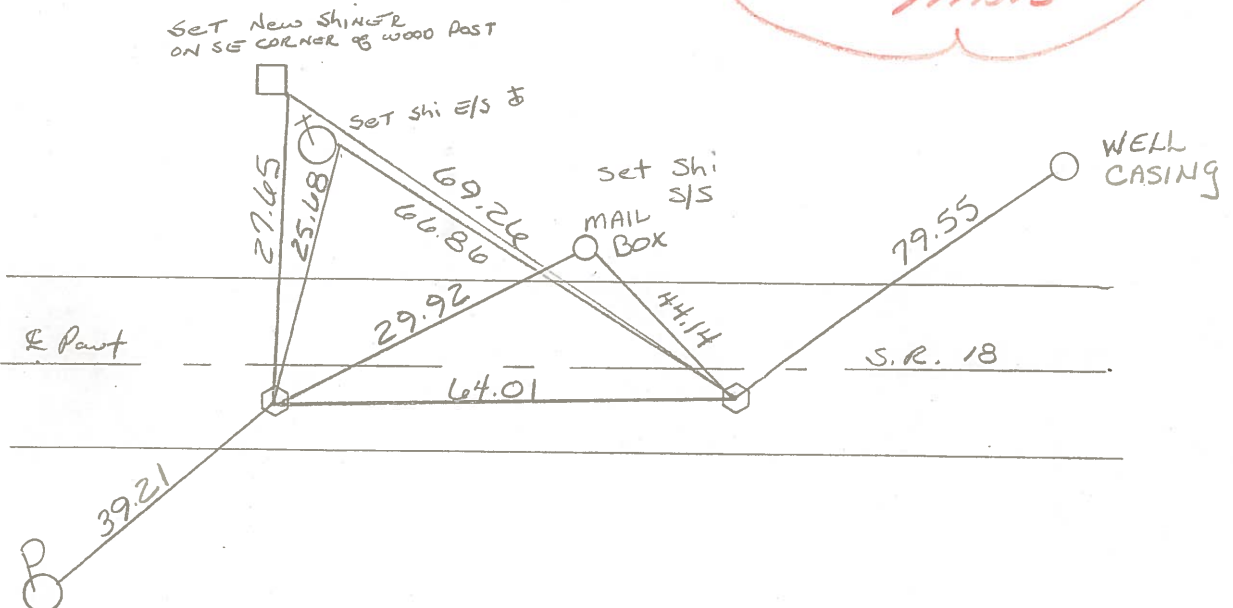
~~LEFT~~ - ~~PAV'T.~~ - RIGHT 4.1 - 3.9

S.O TO RT EDGE PAVEMENT

S.O. RT 180+53 - 181+17

S.L.M. \_\_\_\_\_

*Set Sm RR Spk's  
6-15-87  
MAB*



**RECORD:**  
 Fd P.K. OVER RR SPIKE OVER STONE  
 STONE IS 7" DEEP  
 S 1/4 COR SEC 34  
 FLATROCK TWP  
 HENRY CO. 1976

**RECORD:**  
 N 1/2 COR SEC 3  
 PLEASANT TWP  
 Fd STONE 12" Below SURFACE  
 & 1.50' SOUTH of SOUTH LINE of  
 SEC. 34 FLATROCK TWP.  
 PLACED R.R. SPK ON SURFACE, 1.50'  
 NORTH of STONE.  
 HENRY COUNTY 1983

HENRY COUNTY ENGINEER'S OFFICE  
CORNER STONE RECOVERY PROGRAM

Sht. 8 of 10  
S. R. 18

TOWNSHIP FLATROCK

DATE 6-4-76

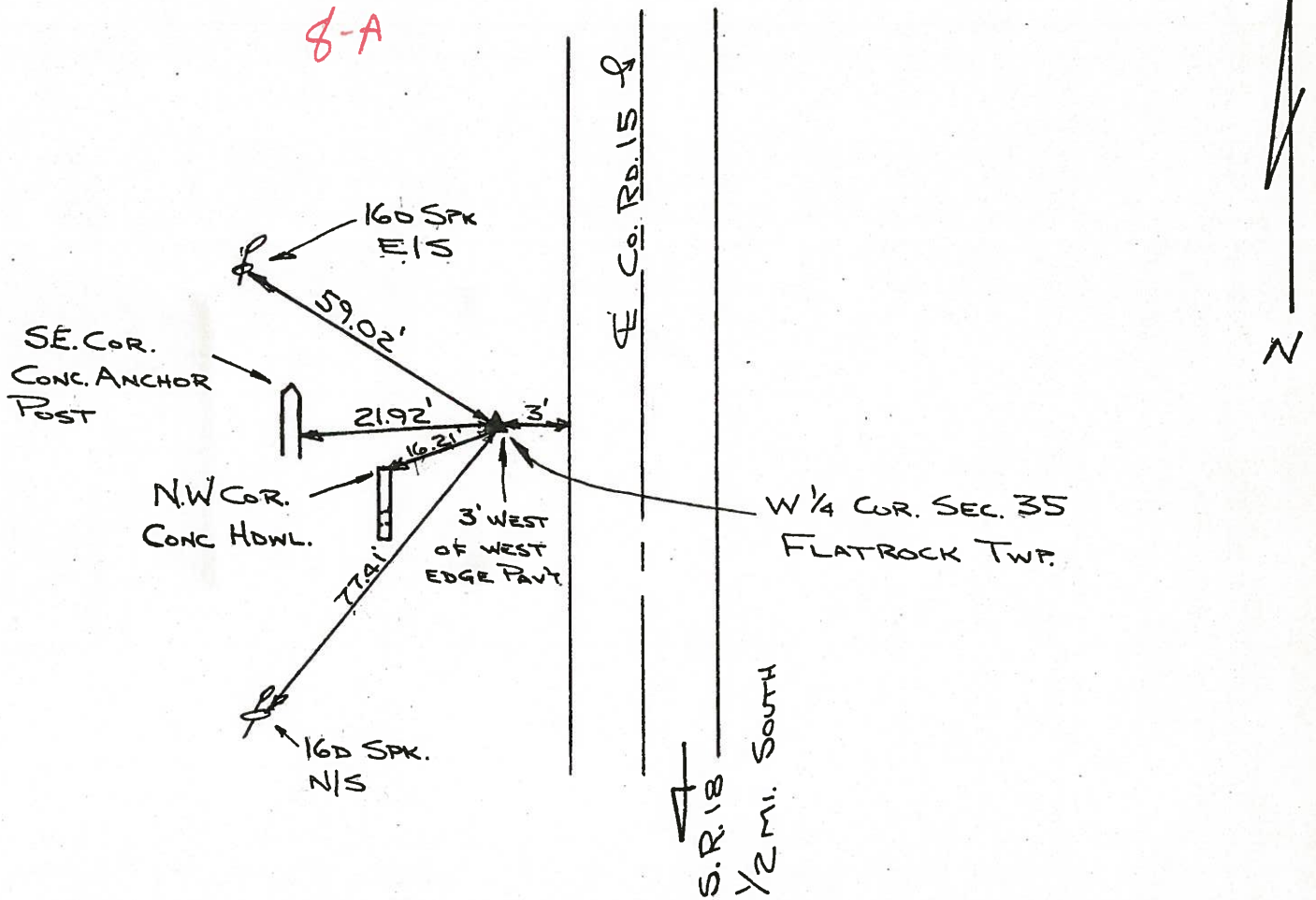
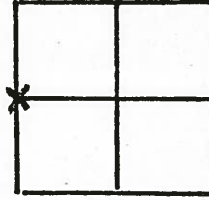
SECTION 35

WEATHER \_\_\_\_\_

T4N, R6E

TEMP \_\_\_\_\_

PERSONNEL J.G.  
B.B.  
R.S.  
S.S.  
M.S.



NOTES:

FOUND 1/2" REBAR ANGLED OVER HIGH POINT OF STONE.  
STONE IS 15" DEEP & REBAR IS 5" DEEP.

PERSONNEL	TITLE	PERSONNEL	TITLE	COUNTY	DATE
Stone				Henry	18 Oct. 74
Denno				S. R. #18	WEATHER Cool
Michalak				SEC. Pleasant Twp.	TEMP. 70°
Curtis					

DESCRIPTION \_\_\_\_\_ Alignment \_\_\_\_\_ JOB NO. \_\_\_\_\_

LEFT \_\_\_\_\_ CENTER LINE \_\_\_\_\_ RIGHT \_\_\_\_\_

