

O.D.O.T. DISTRICT 2 SURVEY OFFICE (USE ONLY)

PERSONNEL

REFERENCE NO. 10 A

SHEET 19 OF 29

NOTES MOSE DATE 9/10/09
 H.C. GOLDBERG WEATHER SUNNY
 R.C. PIETKOWSKI TEMP. 75°

ROUTE SR 18
 COUNTY HENRY
 TOWNSHIP PLEASANT
 SECTION 2

DWG BY NIESE PID NO PID

T 3 N R 6 E

TYPE MONUMENT P.K./WASHER

ON SURFACE - ~~BELOW~~ ON

OFFSET 0.8' ~~±~~ : RT

9.6' TO RT EDGE PAVEMENT

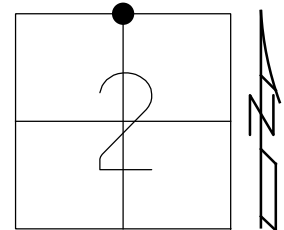
STATION: 234+78

HORZ.DATUM: NAD83(2011)

GEOID: 2012A

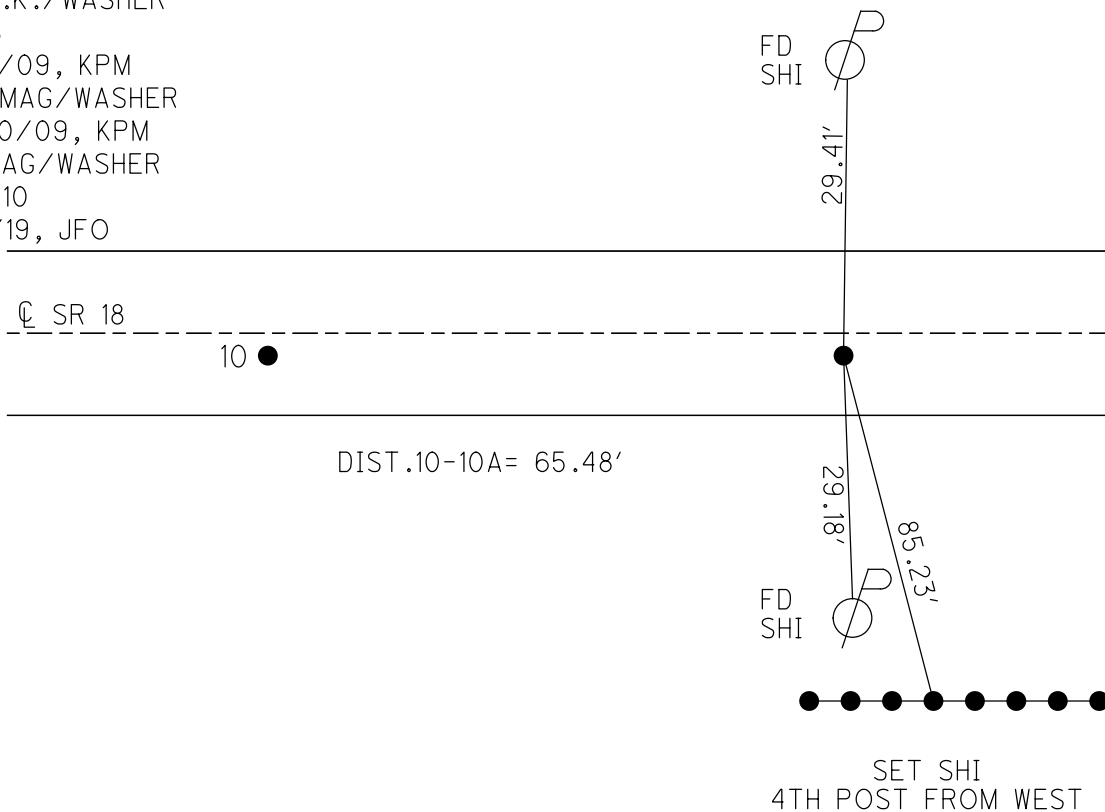
GRID: NORTHING: 582377.106

EASTING: 1516962.562



RECORD:

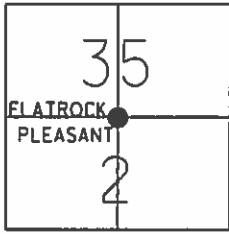
- FD 1 1/2" IPIPE
- 5 1/2" DOWN
- FD SM.R.R.SPIKE
- FD PIECES OF
- WOOD HUB ALONG PIPE
- SET SM.R.R.SPIKE
- FD P.K./WASHER
- SV118
- 9/10/09, KPM
- SET MAG/WASHER
- 10/20/09, KPM
- FD MAG/WASHER
- REFA10
- 8/6/19, JFO



O.D.O.T. DISTRICT 2 SURVEY OFFICE (USE ONLY)

PERSONNEL _____ REFERENCE NO. 10A SHEET 19 OF 29
 NOTES MOSER DATE 09-10-09 ROUTE SR 18
 H.C. GOLDBERG WEATHER SUNNY COUNTY HENRY
 R.C. PIETKOWSKI TEMP. +75° TOWNSHIP PLEASANT
 _____ SECTION 35 - 2
 _____ T 3 N R 6 E

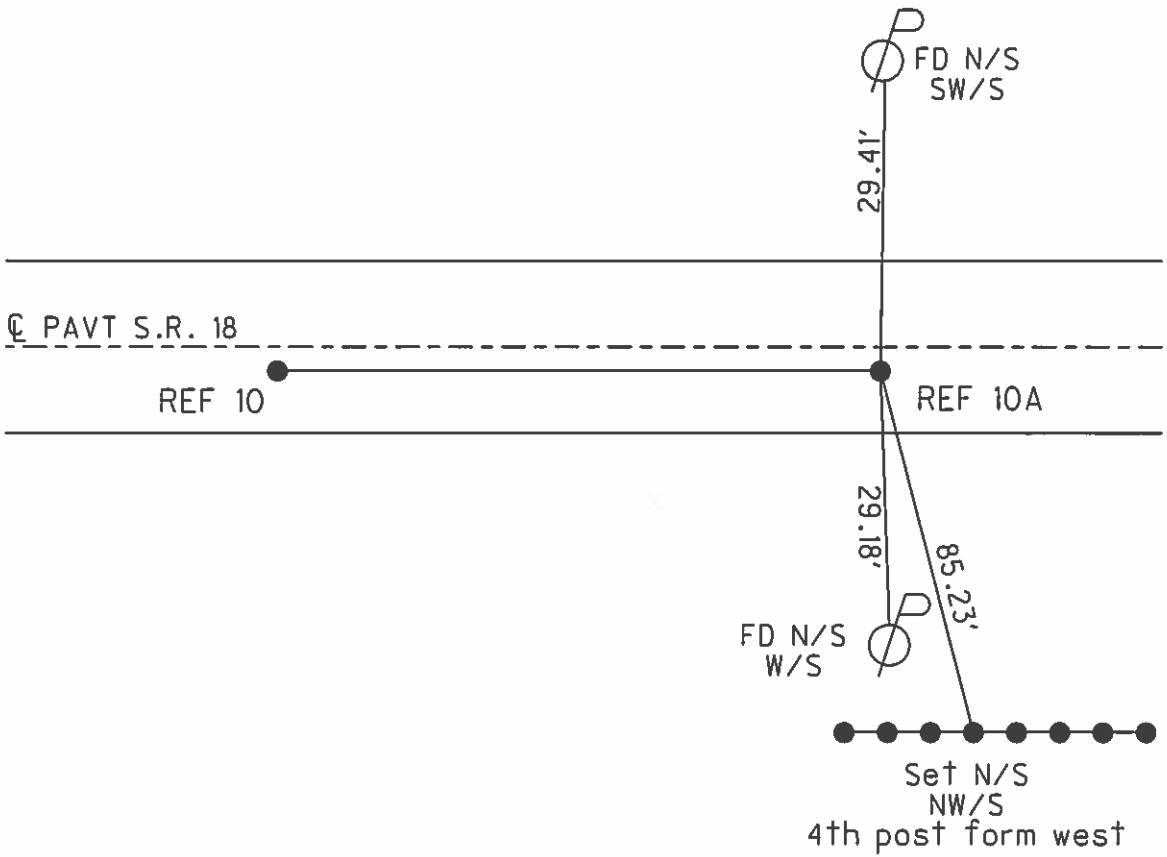
TYPE MONUMENT PK/WASHER
 ON SURFACE - ~~BELOW~~ ON SURFACE
~~LEFT - C PAV'T~~ - RIGHT 0.8'
9.6' TO RT. EDGE PAVEMENT
 S.L.M. 234+78 (SV118)



Grid: Northing: 582377.117 Easting: 1516962.656

Record: N1/4 cor. sec. 2
 Pleasant twp Fd. 1 1/2" ipipe
 5 1/2" deep with small RR spk
 on surface over ipipe. No stone Found.
 Fd. pieces of wood hub along pipe replaced
 small RR spk on surface.

SET MAG/WASHER
 10-20-09 KPM



O.D.O.T. DISTRICT 2 SURVEY OFFICE

PERSONNEL

REFERENCE NO. 10-10A

SHEET 10 OF 11

NOTES HUSS

H.C. VAN DUSEN

R.C. HUSS

DATE 6-1-95

WEATHER CLOUDY / DRIZZLE

TEMP. +65°F

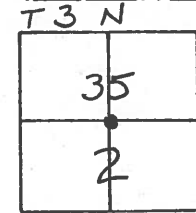
ROUTE S.R. 18

COUNTY HENRY

TOWNSHIP FLATROCK-PLEASANT

SECTION 35 - 2

T 4 N R 6 E



TYPE MONUMENT PK'S & WASHERS

ON SURFACE - BELOW YES - YES

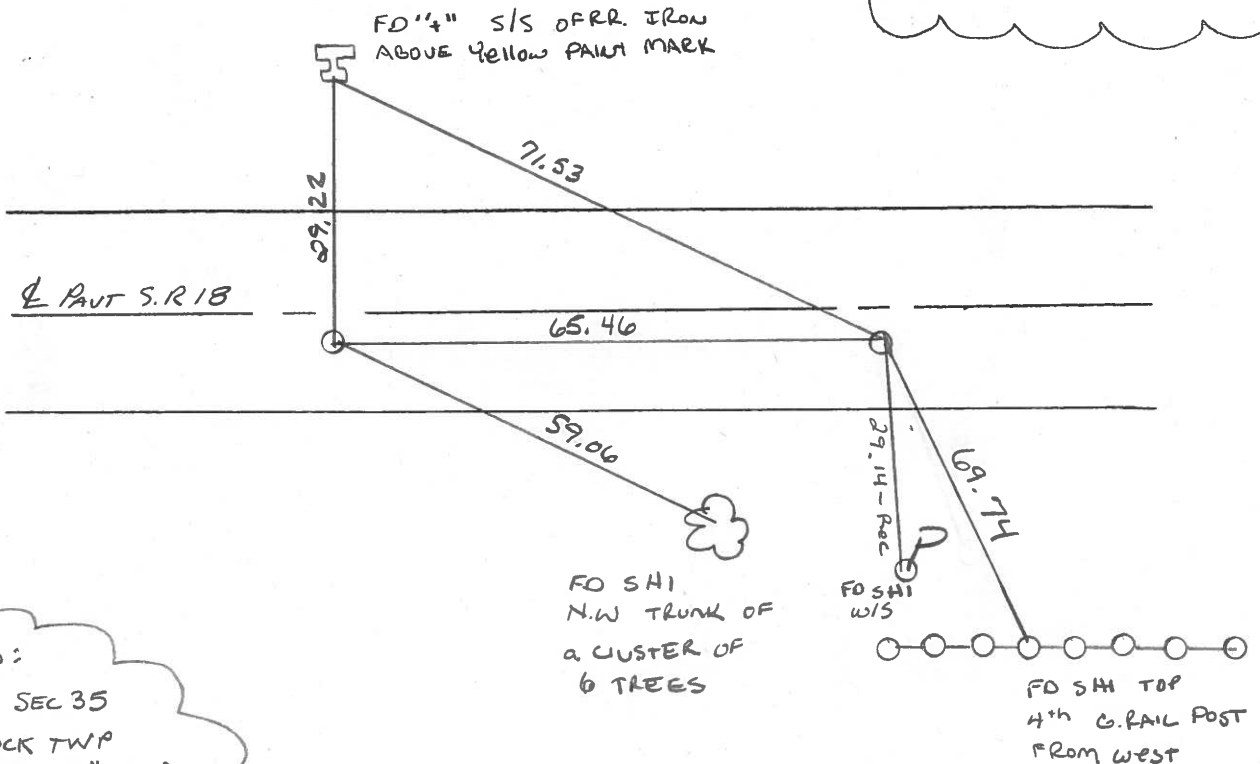
LEFT-~~C~~ PAV'T. - RIGHT 0.6' - 0.5'

^{9.6} TO ^{RT.} EDGE PAVEMENT

S.L.M. 234+10 ~ 234+78

SET PK'S WASHERS
 8-28-95
 SAH

RECORD:
 N 1/4 COR SEC 2
 PLEASANT TWP.
 Fd. 1 1/2" I. PIPE 5 1/2" DEEP
 W/ BABY R.R. SPK. ON SURFACE
 OVER PIPE, FOUND NO STONE
 Fd. PIECES OF WOOD HUB
 ALONG PIPE, REPLACED
 BABY R.R. SPK ON SURFACE



RECORD:
 S 1/4 COR SEC 35
 FLATROCK TWP
 Fd. STONE 13" DEEP
 BABY R.R. SPK NEAR SURFACE
 5/8" REBAR ANGLED OVER CTR
 OF STONE
 REPLACED REBAR AS FOUND
 HENRY CO. 1976

O.D.O.T. DISTRICT 2 SURVEY OFFICE

PERSONNEL

REFERENCE NO. 10-10A

SHEET _____ OF _____

NOTES BARNHISEL

H.C. Loehrke

DATE Aug 12, 1986

ROUTE SR 18

R.C. Sockman

WEATHER SUNNY

COUNTY HENRY

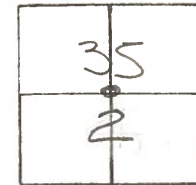
TEMP. +82°

TOWNSHIP FLATROCK - PLEASANT

SECTION 35 - 2

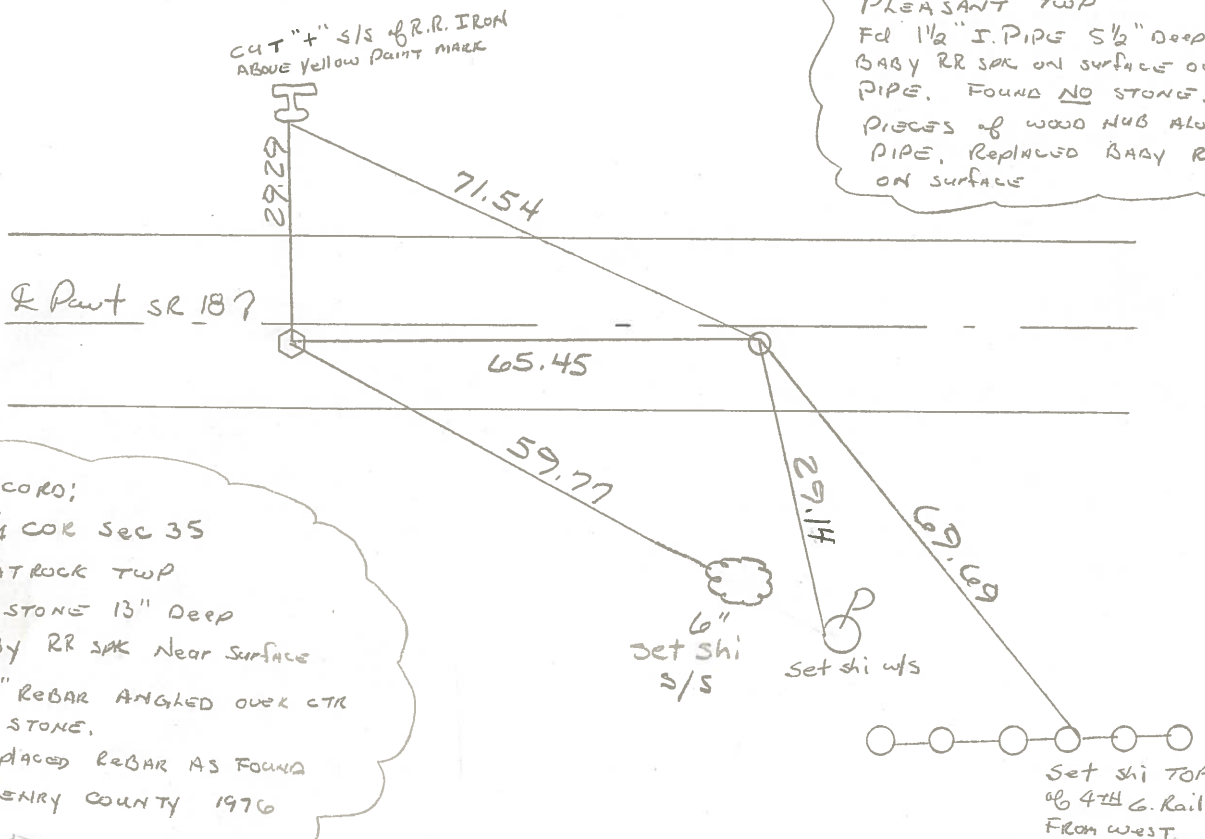
T4 N R 6 E
T3 N

TYPE MONUMENT PK/NAIL-IRON PIPE
 ON SURFACE - BELOW 1 1/2" below - surface
 LEFT-~~C~~ PAV'T. - RIGHT 0.5' - 0.4'
9.5 TO RT EDGE PAVEMENT
9.5 RT
 S.L.M. 233+82 - 234+47



Set Sm RR Spk's
6-15-87
MAB

Records:
 N 1/4 cor sec 2
 PLEASANT TWP
 Fd 1 1/2" I. PIPE 5 1/2" deep with
 BABY RR SAK ON SURFACE OVER
 PIPE. FOUND NO STONE. Fd
 PIECES of WOOD HUB ALONG
 PIPE. Replaced BABY RR SAK
 ON SURFACE



Records:
 S 1/4 cor sec 35
 FLATROCK TWP
 Fd STONE 13" Deep
 BABY RR SAK Near Surface
 5/8" REBAR ANGLED OVER CTR
 of STONE.
 Replaced REBAR AS FOUND
 HENRY COUNTY 1976

Set shi TOP
 of 4th G. Rail Post
 From west.

HENRY COUNTY ENGINEER'S OFFICE CORNER STONE RECOVERY PROGRAM

Sht. 7 of
S.R. 18

TOWNSHIP PLEASANT

DATE 6-28-76

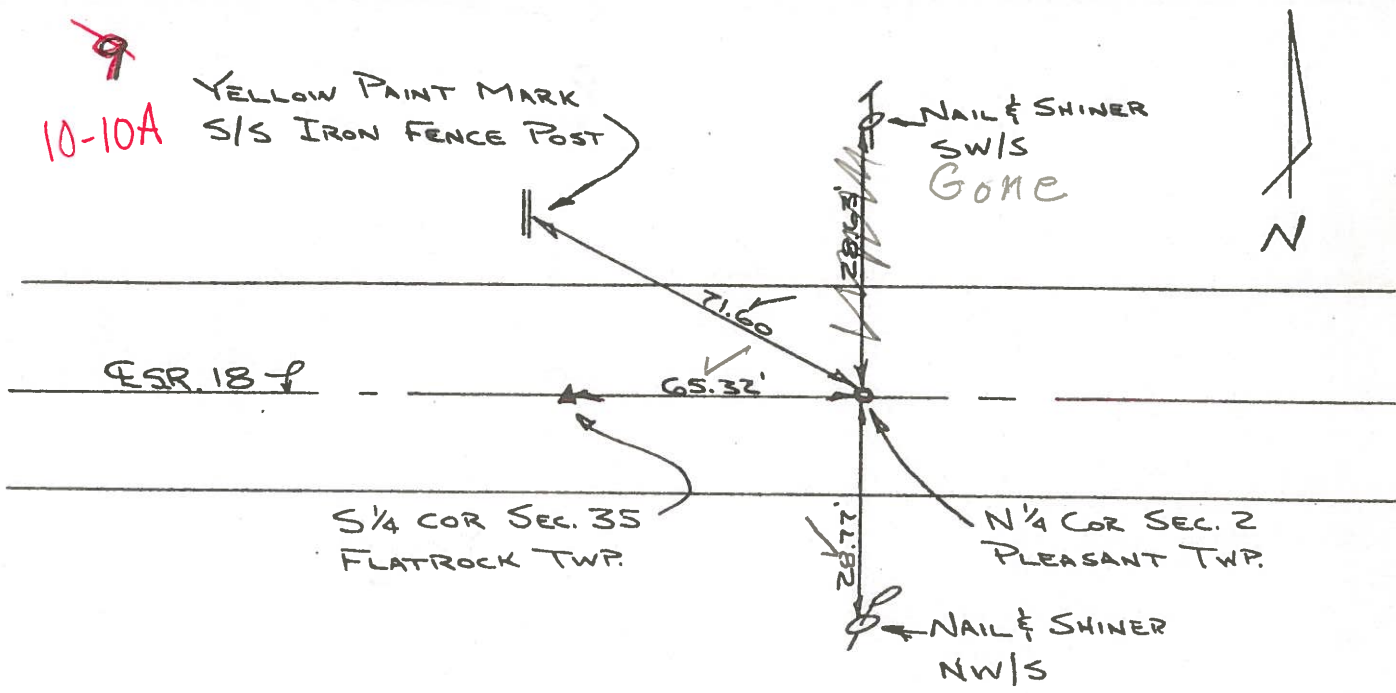
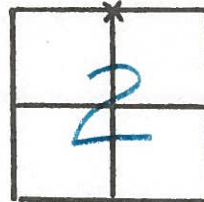
SECTION 2

WEATHER CLEAR & WARM

T3N, R6E

TEMP _____

PERSONNEL RS.
B.B.
MS
SS.



NOTE:

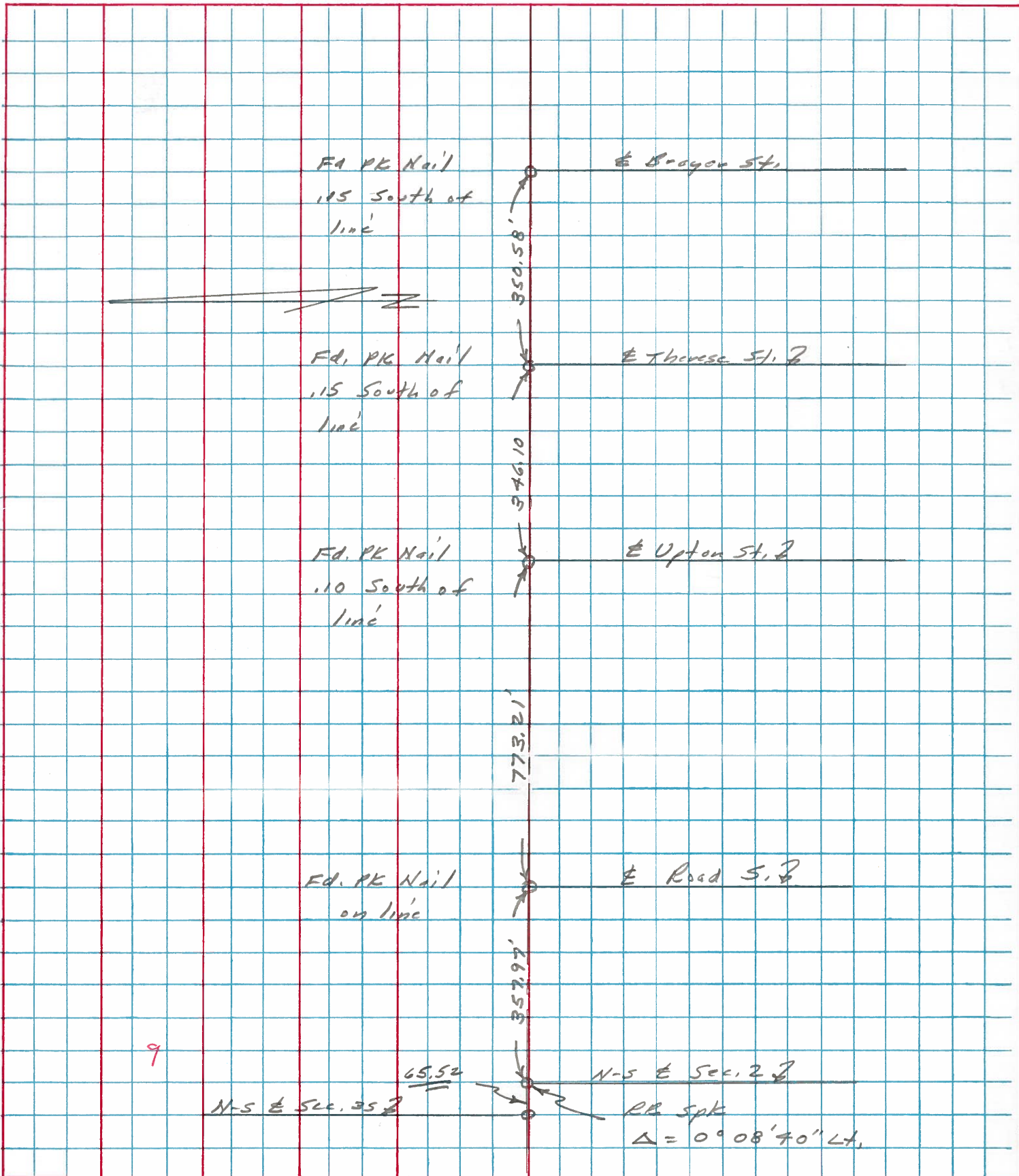
FOUND 1 1/2" IRON PIPE 5 1/2" DEEP W/ BABY R.R. SPK. OVER IT & ON SURFACE. FOUND NO STONE UNDER PIPE, BUT DID FIND WHAT APPEARS TO BE PIECES OF A WOOD HUB ALONG SIDE OF PIPE. REPLACED BABY R.R. SPK ON SURFACE P.K.'S 6' S. & 6' W. 65.32' WEST TO FLATROCK STONE.

Copied:

Painted: 8-76

PERSONNEL	TITLE	PERSONNEL	TITLE	COUNTY	DATE
Stone				Henry	22 Oct. 74
Michalek				S. R. #18	WEATHER Cool
Denno				SEC. Holgate	TEMP. 34°
Curtis					

DESCRIPTION Alignment LEFT CENTER LINE RIGHT JOB NO.



PERSONNEL TITLE PERSONNEL TITLE COUNTY Henry DATE Aug 19, '74
 W. Denno _____ R. Michalak _____ S. R. 18 WEATHER Warm
 D. Curtis _____

SEC. _____ TEMP. 75° ±

DESCRIPTION References To Control Points JOB NO. 02999 (0)

