

O.D.O.T. DISTRICT 2 SURVEY OFFICE (USE ONLY)

PERSONNEL

REFERENCE NO. 11 A

SHEET 22 OF 29

NOTES MOSE DATE 9/10/09

H.C. GOLDBERG WEATHER SUNNY

R.C. PIETKOWSKI TEMP. 75°

ROUTE SR 18

COUNTY HENRY

TOWNSHIP PLEASANT

SECTION 1

DWG BY NIESE PID NO PID

T 3 N R 6 E

TYPE MONUMENT P.K./WASHER

ON SURFACE - ~~BELOW~~ ON

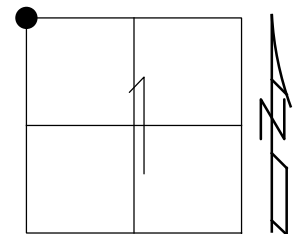
OFFSET 0.4' LT : ~~RT~~

9.8' TO LT EDGE PAVEMENT

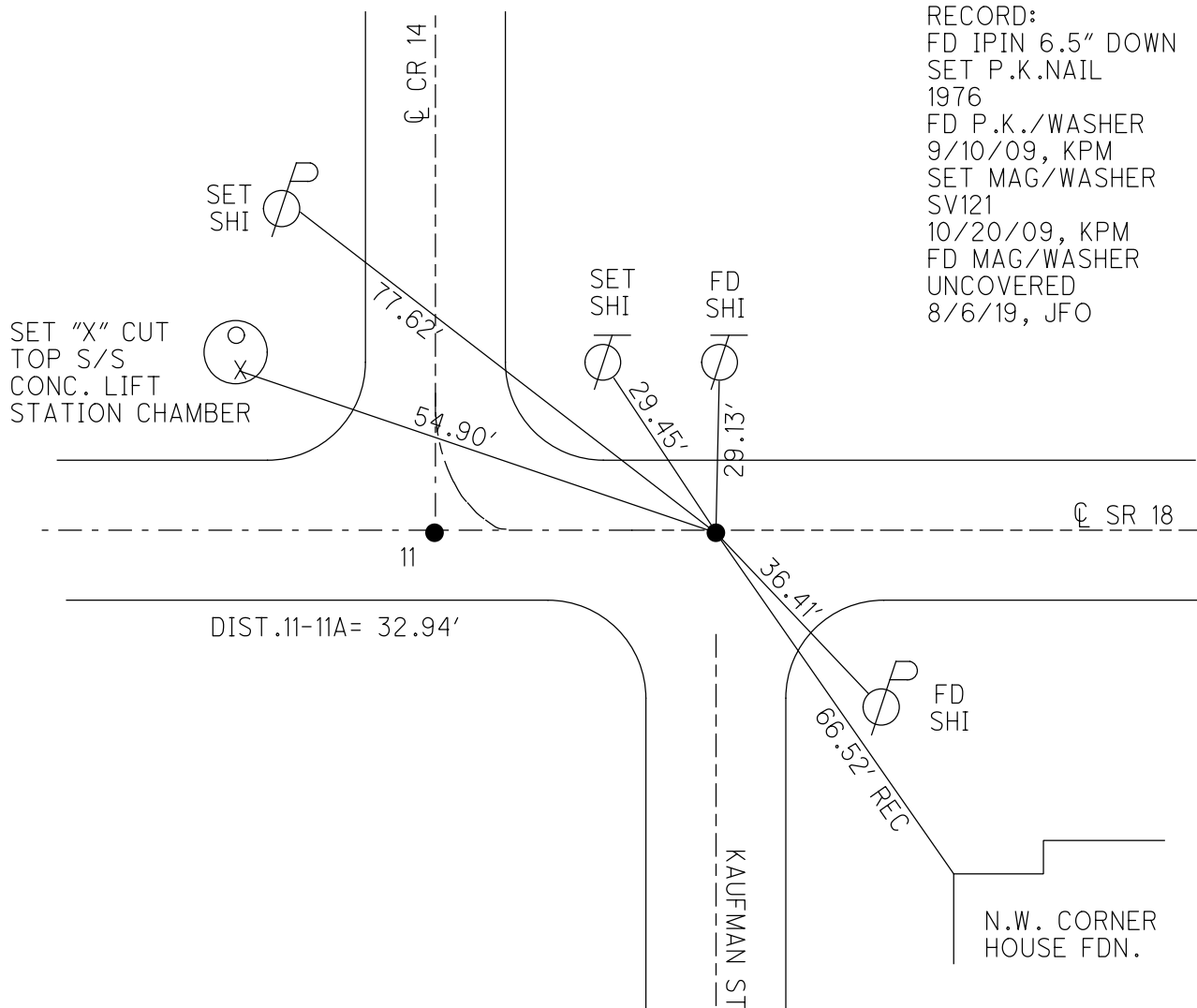
STATION: 261+29

HORZ. DATUM: NAD83(2011) GEOID: 2012A

GRID: NORTHING: 582372.870 EASTING: 1519611.857



RECORD:
 FD IPIN 6.5" DOWN
 SET P.K.NAIL
 1976
 FD P.K./WASHER
 9/10/09, KPM
 SET MAG/WASHER
 SV121
 10/20/09, KPM
 FD MAG/WASHER
 UNCOVERED
 8/6/19, JFO



O.D.O.T. DISTRICT 2 SURVEY OFFICE (USE ONLY)

PERSONNEL

REFERENCE NO. 11A

SHEET 22 OF 29

NOTES MOSER

DATE 09-10-09

ROUTE SR 18

H.C. GOLDBERG

WEATHER SUNNY

COUNTY HENRY

R.C. PIETKOWSKI

TEMP. +75°

TOWNSHIP PLEASANT

SECTION 36 - 1

T 5 N R 6 E

TYPE MONUMENT PK/WASHER

ON SURFACE - ~~BELOW~~ ON SURFACE

LEFT - ~~C PAV'T~~ - RIGHT 0.4'

9.8' TOLT. EDGE PAVEMENT

S.L.M. 261+29 (SV121)

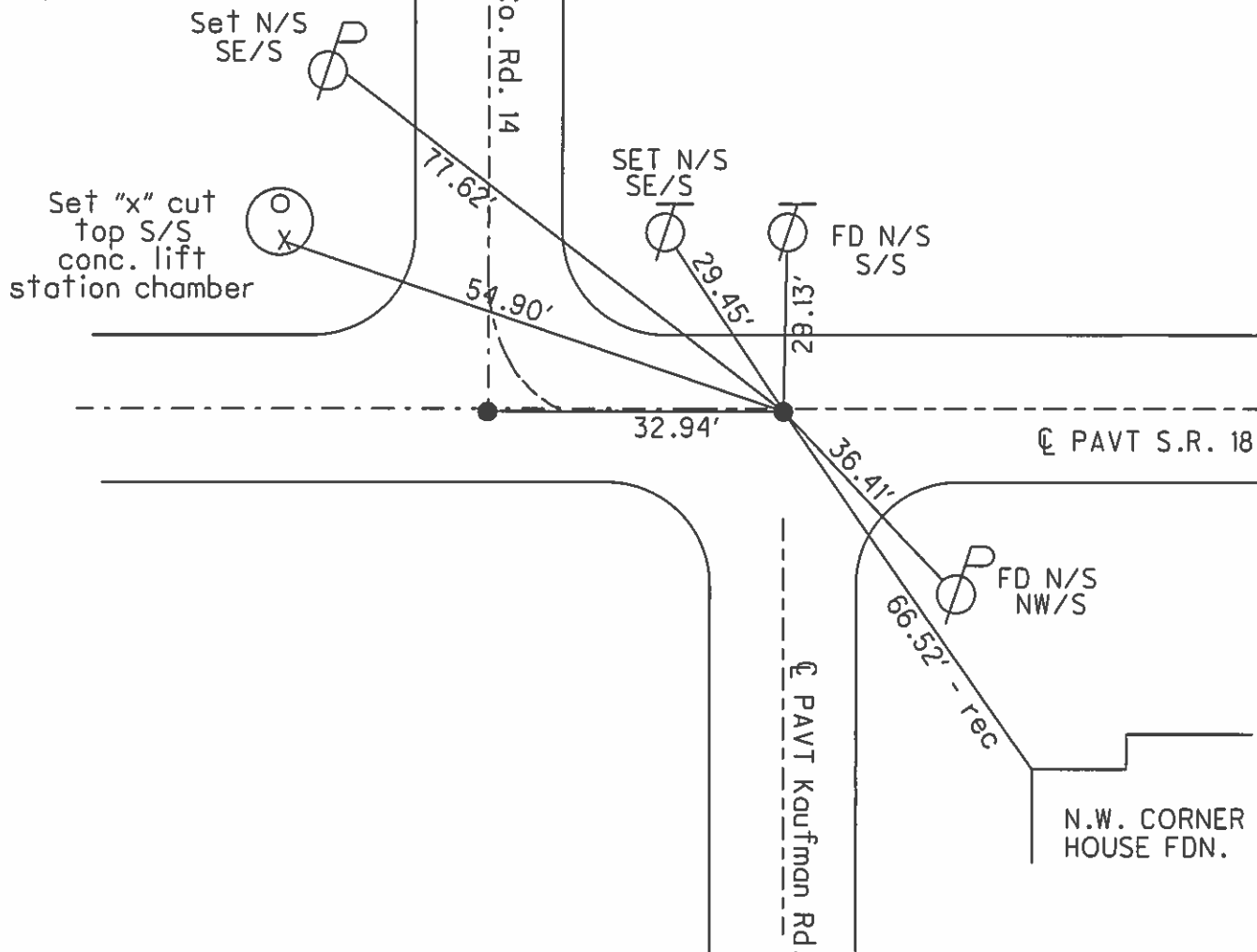
Grid: Northing: 582372.791 Easting: 1519611.814

35	36
FLATROCK PLEASANT	
2	1



Record: N.W. Cor. Sec 1
Pleasant twp. No stone,
just Iron pin.
Placed P.K. over pin.
I pin 6.5" deep.
Henry Co. 1976

SET MAG/WASHER
10-20-09 KPM



O.D.O.T. DISTRICT 2 SURVEY OFFICE

PERSONNEL

REFERENCE NO. 10 FA

SHEET 11 OF 11

NOTES HUSS
 H.C. VAW DUSEN
 R.C. HUSS

DATE 6-1-95
 WEATHER CLOUDY DRIZZLE
 TEMP. +65° F

ROUTE S.R. 18
 COUNTY HENRY
 TOWNSHIP FLATROCK - PLEASANT
 SECTION 36-1
T 4 N R 6 E
T 5 N

TYPE MONUMENT PK'S & WASHERS
 ON SURFACE - BELOW YES ~ YES
~~LEFT~~ - PAV'T. - RIGHT 0.6' RT ~ CL
~~9.4~~ 10.0 ^{RT} TO ^{RT} EDGE PAVEMENT
 S.L.M. 260+96 ~ 261+29

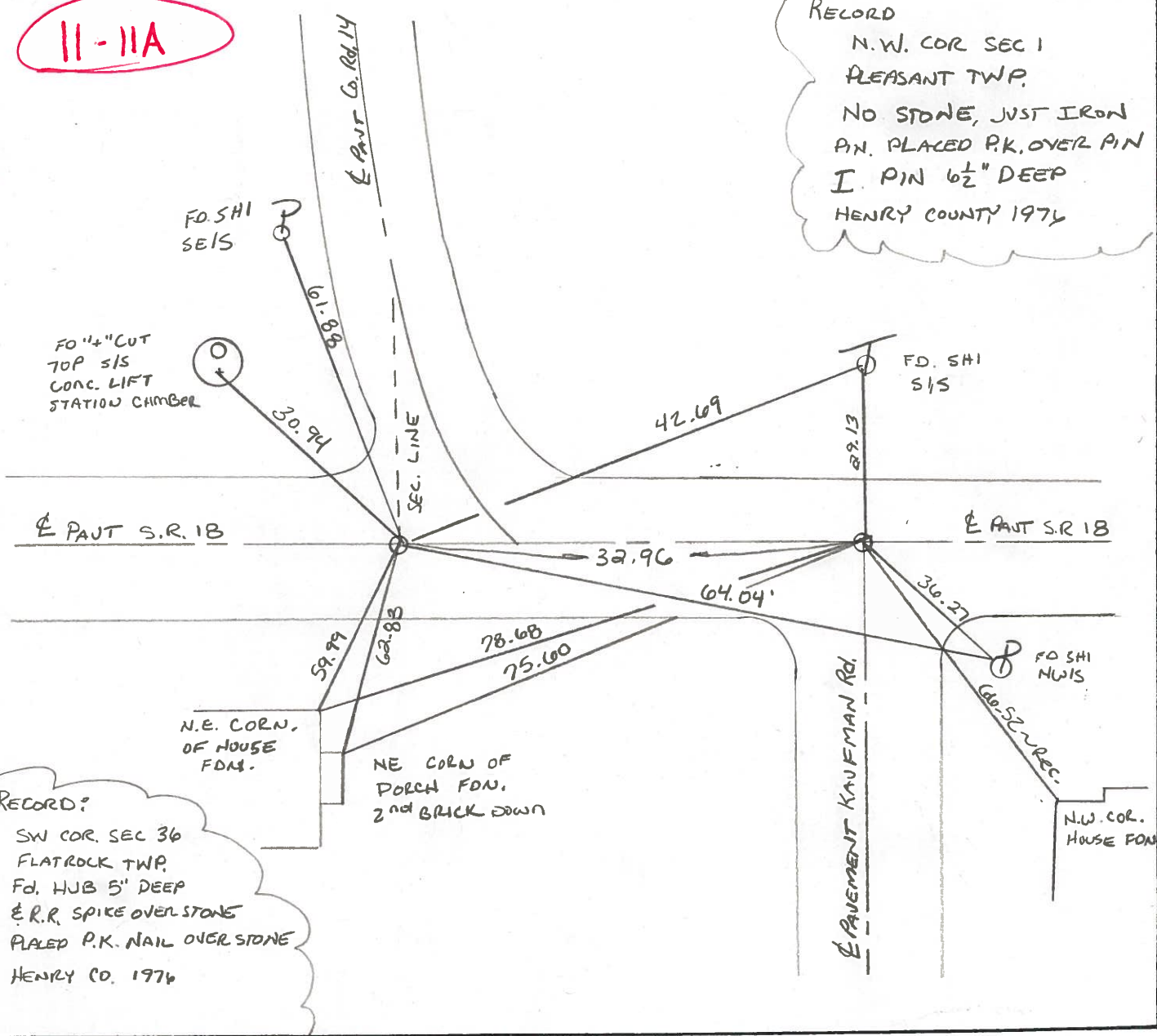
4.94

35	36
2	1



11-11A

RECORD
 N.W. COR SEC 1
 PLEASANT TWP.
 NO STONE, JUST IRON
 PIN. PLACED PK. OVER PIN
 I. PIN 6 1/2" DEEP
 HENRY COUNTY 1976



RECORD?
 SW COR. SEC 36
 FLATROCK TWP.
 FD. HUB 5' DEEP
 E.R.R. SPIKE OVER STONE
 PLACED P.K. NAIL OVER STONE
 HENRY CO. 1976

O.D.O.T. DISTRICT 2 SURVEY OFFICE

PERSONNEL

REFERENCE NO. 11- 11A

SHEET OF

NOTES BARNHISEL

H.C. Loehrke

DATE Aug 12, 1986

ROUTE SR 18

R.C. SOCKMAN

WEATHER SUNNY

COUNTY HENRY

TEMP. +82°

TOWNSHIP FLATROCK - PLEASANT

SECTION 36 - 1

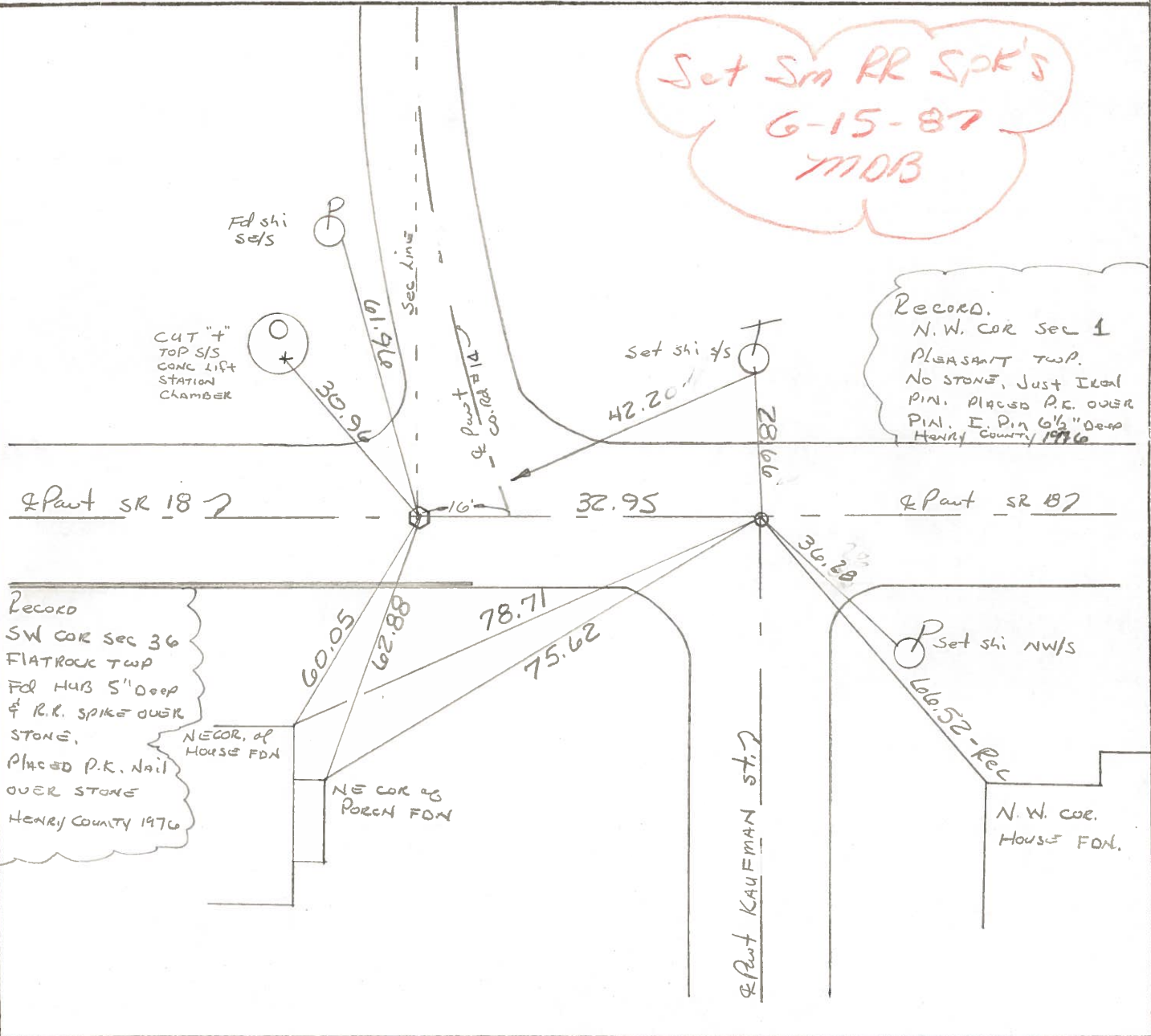
T4 N R 6 E
T3 N

TYPE MONUMENT RR Spk - PK
 ON SURFACE - ~~BELOW~~ yes 1/2" Down
~~LEFT - & PAV'T. - RIGHT~~ yes
10.2 TO RT EDGE PAVEMENT
 S.L.M. 260+65 + 260+98

35	36
2	1



Set Sm RR Spk's
 6-15-87
 MOB



CUT "+"
TOP S/S
CONC LIFT
STATION
CHAMBER

Record
SW COR sec 36
FLATROCK TWP
FDL HUB 5" Deep
& R.R. SPIKE OVER
STONE.
Placed P.K. Nail
OVER STONE
HENRY COUNTY 1976

Record.
N.W. COR sec 1
PLEASANT TWP.
NO STONE, Just IRON
PIN. Placed P.K. OVER
PIN. E. Pin 6 1/2" Deep
HENRY COUNTY 1976

NECOR. of
HORSE FDN

NE COR of
POREN FDN

N.W. COR.
House FDN.

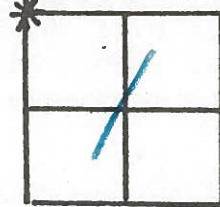
PAV'T KAUFMAN ST.

HENRY COUNTY ENGINEER'S OFFICE CORNER STONE RECOVERY PROGRAM

Sht. 2 of
S.R. 18

TOWNSHIP PLEASANT
SECTION 1
T3N, R6E
PERSONNEL JG
BB
MS
SS

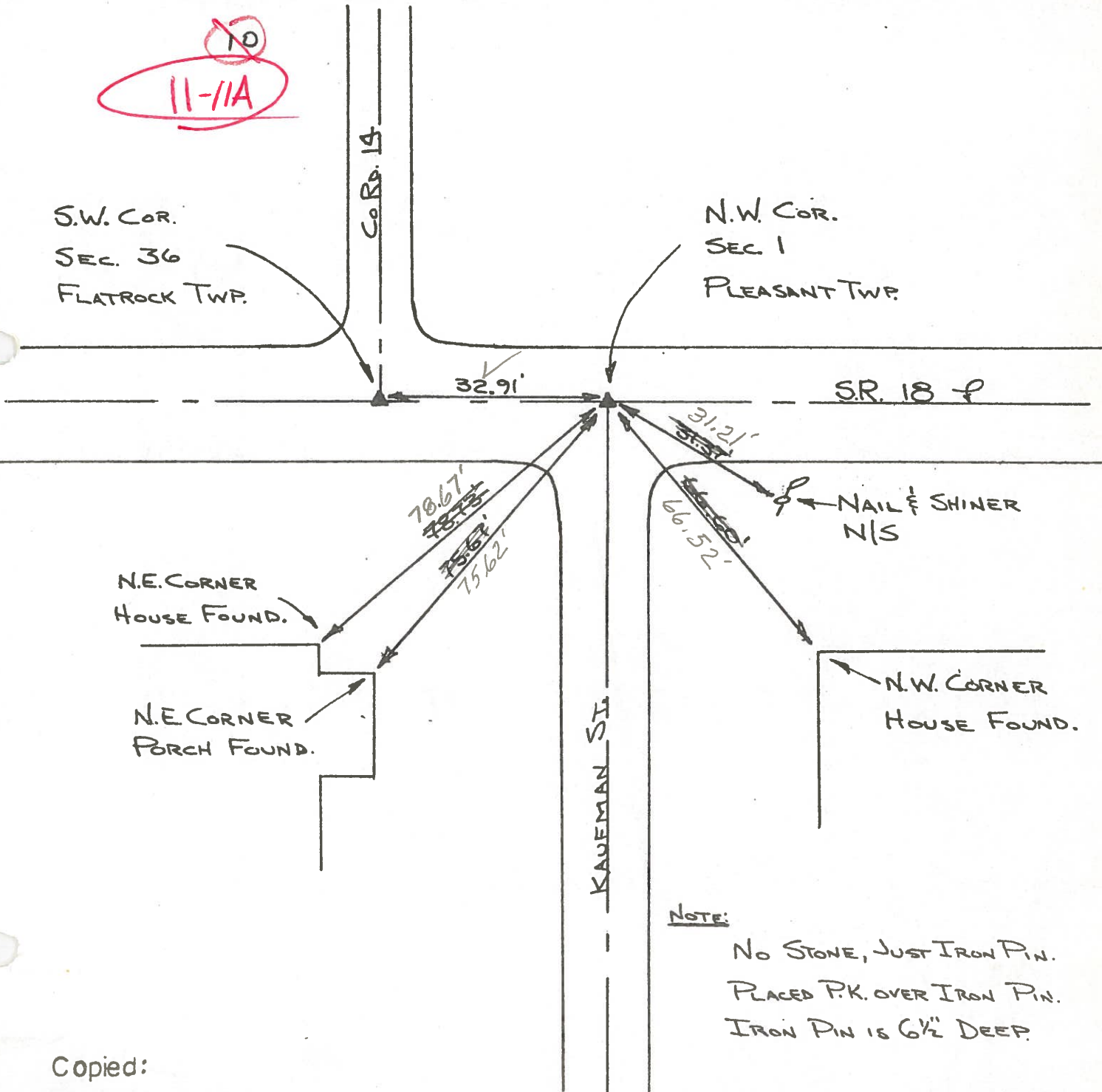
DATE 7-1-76
WEATHER CLEAR & WARM
TEMP _____



⑩
11-11A

S.W. COR.
SEC. 36
FLATROCK TWP.

N.W. COR.
SEC. 1
PLEASANT TWP.



NOTE:

NO STONE, JUST IRON PIN.
PLACED P.K. OVER IRON PIN.
IRON PIN IS 6 1/2" DEEP.

Copied:
Painted: 8-76

PERSONNEL TITLE PERSONNEL TITLE

COUNTY Henry

DATE 22 Oct. 74

Stone

S. R. #18

WEATHER Cold

Denno

Curtis

SEC. Holgate

TEMP. 35°

DESCRIPTION

LEFT

Alignment

CENTER LINE

RIGHT

JOB NO.

