

O.D.O.T. DISTRICT 2 SURVEY OFFICE (USE ONLY)

PERSONNEL

REFERENCE NO. 12 A

SHEET 29 OF 29

NOTES MOSER

DATE 9/10/09

ROUTE SR 18

H.C. GOLDBERG

WEATHER SUNNY

COUNTY HENRY

R.C. PIETKOWSKI

TEMP. 75°

TOWNSHIP PLEASANT

DWG BY NIESE PID NO PID

SECTION 1

T 3 N R 6 E

TYPE MONUMENT P.K.NAIL

ON SURFACE - ~~BELOW~~ ON

OFFSET C PAVEMENT 2.5' ~~RT~~ : RT

6.6' TO RT EDGE PAVEMENT

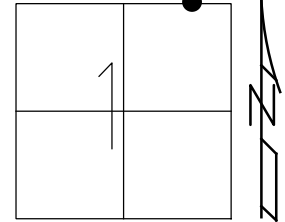
STATION: 300+26

HORZ.DATUM: NAD83(2011)

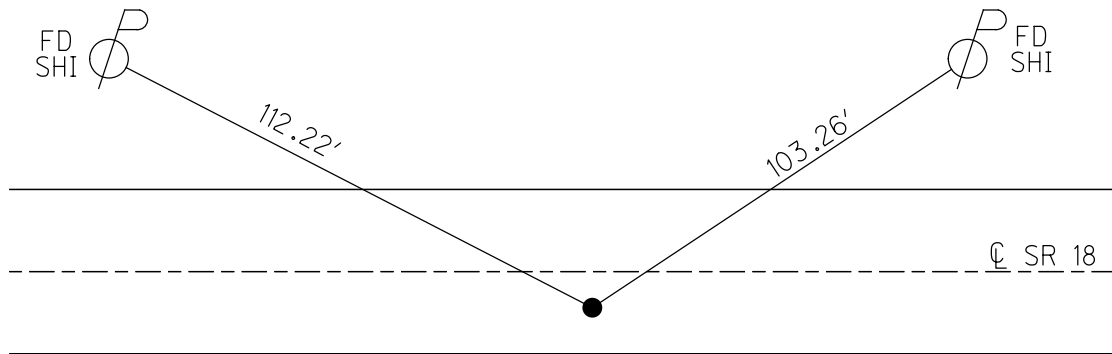
GEOID: 2012A

GRID: NORTHING: 582326.327

EASTING: 1523539.620



RECORD:
 SET MAG/WASHER
 2/24/09, KJM
 FD P.K.NAIL
 9/10/09, KPM
 FD MAG/WASHER
 REFA12
 6/17/16, JMR
 FD LG.R.R.SPIKE
 3 1/2" DOWN
 NEWREFA12
 11/13/17
 8/6/19, JFO



O.D.O.T. DISTRICT 2 SURVEY OFFICE (USE ONLY)

PERSONNEL _____ REFERENCE NO. 12 A SHEET 29 OF 29

NOTES MOSER DATE 9/10/09 ROUTE SR 18
H.C. GOLDBERG WEATHER SUNNY COUNTY HENRY
R.C. PIETKOWSKI TEMP. 75° TOWNSHIP PLEASANT
SECTION 1
T 3 N R 6 E

TYPE MONUMENT P.K.NAIL

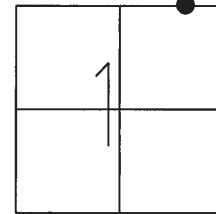
ON SURFACE - ~~BELOW~~ ON _____

~~LEFT~~ - CL PAV'T - RIGHT 2.5'

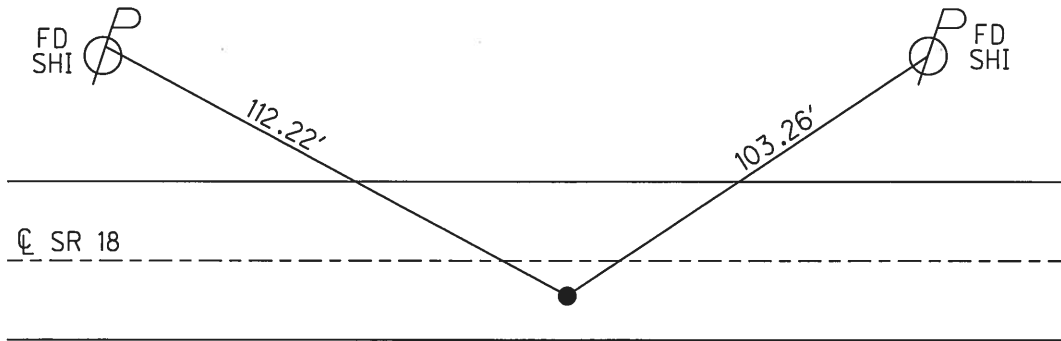
6.6' TO RT EDGE PAVEMENT

S.L.M. 300+26

GRID: NORTHING: 582326.327 EASTING: 1523539.620



RECORD:
SET MAG/WASHER
2/24/09, KJM
FDMAG/WASHER
REFA12
6/17/16, JMR
FD LG.R.R.SPIKE
3 1/2" DOWN
NEWREFA12
11/13/17, JFO



O.D.O.T. DISTRICT 2 SURVEY OFFICE (USE ONLY)

PERSONNEL

REFERENCE NO. 12-A

SHEET 29 OF 29

NOTES MOSE

DATE 09-10-09

ROUTE SR 18

H.C. GOLDBERG

WEATHER SUNNY

COUNTY HENRY

R.C. PIETKOWSKI

TEMP. +75°

TOWNSHIP PLEASANT

SECTION 1

T 3 N R 6 E

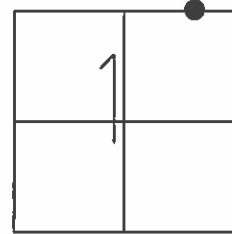
TYPE MONUMENT PK NAIL

ON SURFACE - BELOW ON SURFACE

~~LEFT - C PAV'T~~ - RIGHT 2.5'

6.6' TO RT EDGE PAVEMENT

S.L.M. 300+26 (SV128)



Grid: Northing: 582326.365 Easting: 1523539.698

Reset MAG/WASHER
2/24/09

New Pavement from
08 resurfacing

FD N/S
S/S



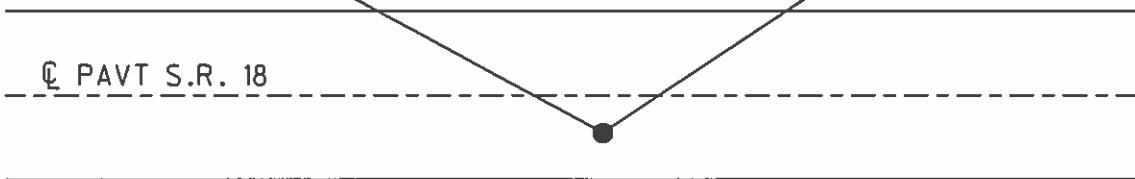
112.22'

FD N/S
S/S



103.26'

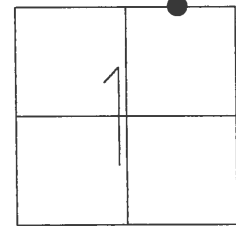
C PAVT S.R. 18



O.D.O.T. DISTRICT 2 SURVEY OFFICE (USE ONLY)

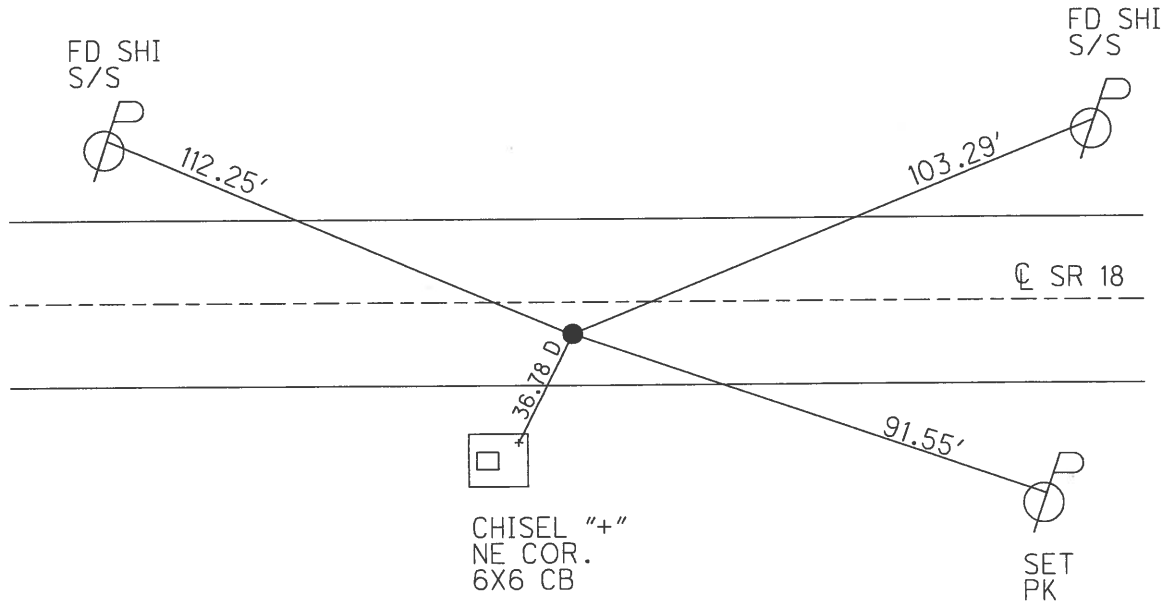
PERSONNEL _____ REFERENCE NO. 12 A SHEET 3 OF 31
 NOTES NUHFER DATE 6/26/08 ROUTE SR 18
 H.C. MOSER WEATHER CLEAR COUNTY HENRY
 R.C. NUHFER TEMP. 83° TOWNSHIP PLEASANT
 _____ SECTION 1
 _____ T 3 N R 6 E

TYPE MONUMENT S.R.R.SPIKE
 ON SURFACE - ~~BELOW~~ ON _____
~~LEFT~~ - CL PAV'T - RIGHT 2.4'
7.7' TO RT EDGE PAVEMENT
 S.L.M. 300+26
 Grid: Northing: 582326.360 Easting: 1523539.571



FD SM.R.R.SPIKE
 SAH, 1/10/07

GPS, REF AA12
 KPM, 6/27/08



HOLGATE LOCAL
 SCHOOL

O.D.O.T. DISTRICT 2 SURVEY OFFICE

PERSONNEL

REFERENCE NO. 12-A

SHEET OF

NOTES Sack MAN

H.C. BARWISSEL

R.C. LOEHRKE

DATE 8-12-87

WEATHER CLEAR

TEMP. +72

ROUTE SR 18

COUNTY HENRY

TOWNSHIP PLEASANT

SECTION 1

T.3 N R.6 E

TYPE MONUMENT PIK NAIL

Set small RR SAK

ON SURFACE - BELOW

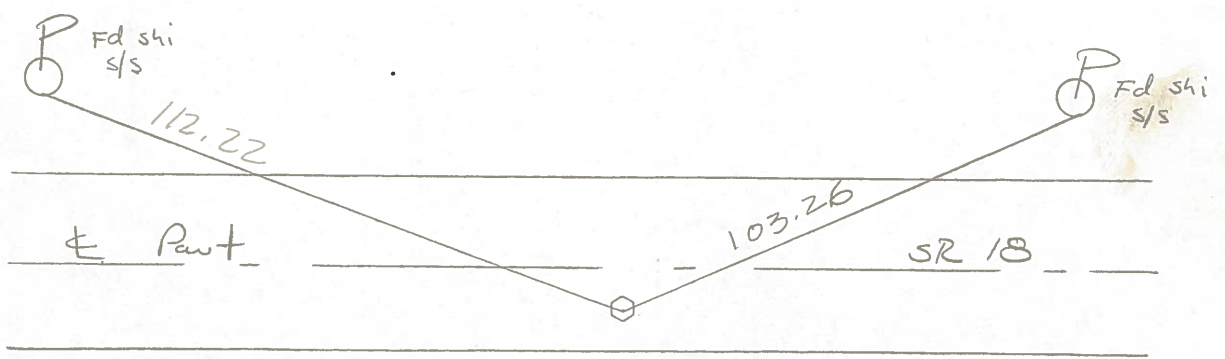
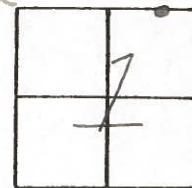
8-20-87

~~LEFT - PAVT.~~ - RIGHT 2.5'

SWM

6.6 TO RT EDGE PAVEMENT

S.L.M. 300 + 26



OD.O.T. DISTRICT 2 SURVEY OFFICE

SHEET 6 OF

8-19-81

County HENRY S.R. 18

Date 5-28-81

Township PLEASANT

Weather CLEAR ✓

Section 1

Temp. +70° ✓

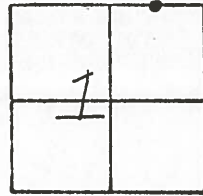
T3N, R6E

Personnel S Hoffmann

C Loehrke

J Householder

12A

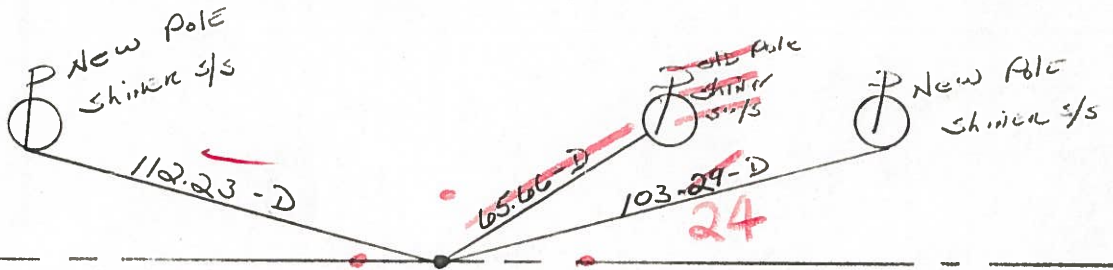


2 1/2"

PROJECT STA ± 300+45

✓ Fd. R.P. SPK X' Below SURFACE
14.0' TO N. EDGE PAVT.
6.4' TO S. EDGE PAVT.
8.75
Set 4-2' strand nails

2.65 ft



S.R. 18