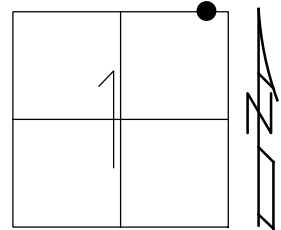


O.D.O.T. DISTRICT 2 SURVEY OFFICE (USE ONLY)

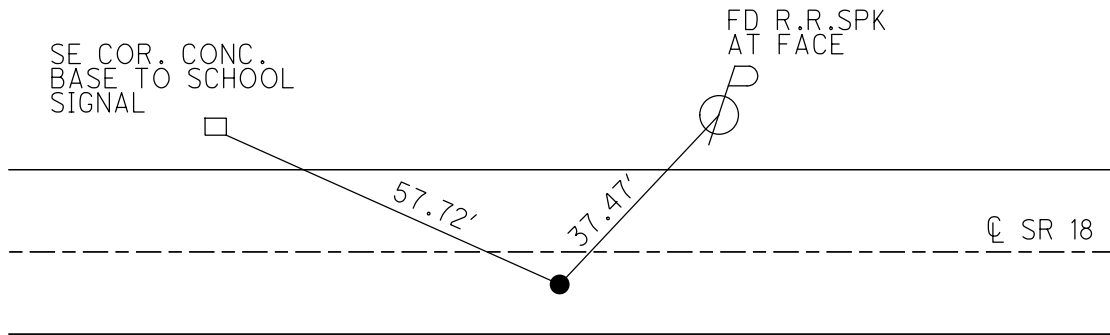
PERSONNEL _____ REFERENCE NO. 12 B SHEET 4 OF 31
 NOTES NUHFER DATE 6/26/08 ROUTE SR 18
 H.C. MOSER WEATHER CLEAR COUNTY HENRY
 R.C. NUHFER TEMP. 83° TOWNSHIP PLEASANT
 DWG BY NIESE PID NO PID SECTION 1
 T 3 N R 6 E

TYPE MONUMENT MAG NAIL
 ON SURFACE - ~~BELOW~~ ON
 OFFSET 7.2' TO RT PAVEMENT 2.8' ~~±~~ : RT
TO RT EDGE PAVEMENT
 STATION: 307+85



HORIZ.DATUM: NAD83(2011) GEOID: 2012A
 GRID: NORTHING: 582318.245 EASTING: 1524298.479

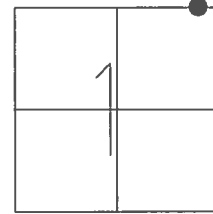
RECORD:
 FD MAG NAIL
 POSSIBLE NEW CORPLINE
 TO THE S. FOR SCHOOL
 1/10/07, SAH
 REFA13
 6/27/08, KPM
 SET MAG/WASHER
 REFB12
 6/17/16, JMR
 UNCOVERED
 11/13/17, JFO
 FD MAG/WASHER
 8/6/19, JFO



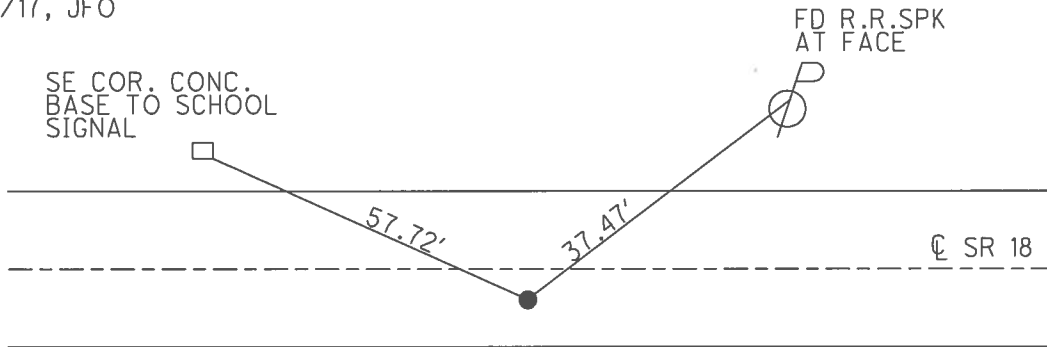
O.D.O.T. DISTRICT 2 SURVEY OFFICE (USE ONLY)

PERSONNEL _____ REFERENCE NO. 12 B SHEET 4 OF 31
 NOTES NUHFER DATE 6/26/08 ROUTE SR 18
 H.C. MOSER WEATHER CLEAR COUNTY HENRY
 R.C. NUHFER TEMP. 83° TOWNSHIP PLEASANT
 _____ SECTION 1
 _____ T 3 N R 6 E

TYPE MONUMENT MAG NAIL
 ON SURFACE - ~~BELOW~~ ON
~~LEFT~~ - CL PAV'T - RIGHT 2.8'
7.2' TO RT EDGE PAVEMENT
 S.L.M. 307+85
 GRID: NORTHING: 582318.245 EASTING: 1524298.479



RECORD:
 FD MAG NAIL
 POSSIBLE NEW CORPLINE
 TO THE S. FOR SCHOOL
 1/10/07, SAH
 REFA13
 6/27/08, KPM
 SET MAG/WASHER
 REFB12
 6/17/16, JMR
 UNCOVERED
 11/13/17, JFO



O.D.O.T. DISTRICT 2 SURVEY OFFICE (USE ONLY)

PERSONNEL _____

REFERENCE NO. 12 B

SHEET 4 OF 31

NOTES NUHFER

DATE 6/26/08

ROUTE SR 18

H.C. MOSE

WEATHER CLEAR

COUNTY HENRY

R.C. NUHFER

TEMP. 83°

TOWNSHIP PLEASANT

SECTION 1

T 3 N R 6 E

TYPE MONUMENT MAG NAIL

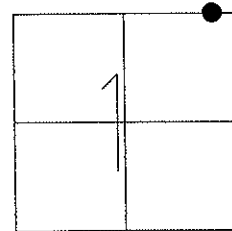
ON SURFACE - ~~BELOW~~ ON

~~LEFT~~ - Q PAV'T - RIGHT 2.8'

7.2' TO RT EDGE PAVEMENT

S.L.M. 307+85

Grid: Northing: 582318.224 Easting: 1524298.472



FD MAG NAIL
POSSIBLE NEW CORPLINE
TO THE S. FOR SCHOOL
PROP. SAH, 1/10/07

GPS, REF A13
KPM, 6/27/08

