

O.D.O.T. DISTRICT 2 SURVEY OFFICE (USE ONLY)

PERSONNEL

REFERENCE NO. 13

SHEET 5 OF 31

NOTES NUHFER

DATE 6/26/08

ROUTE SR 18

H.C. MOSER

WEATHER CLEAR

COUNTY HENRY

R.C. NUHFER

TEMP. 83°

TOWNSHIP PLEASANT

SECTION 1

DWG BY NIESE

PID NO PID

T 3 N R 6 E

TYPE MONUMENT SM.R.R.SPIKE

ON SURFACE - ~~BELOW~~ ON

OFFSET C PAVEMENT 3.2' ~~RT~~ : RT

6.6' TO RT EDGE PAVEMENT

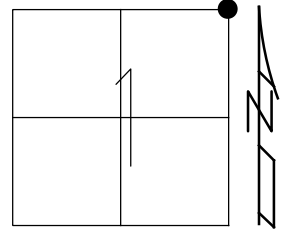
STATION: 313+46

HORIZ.DATUM: NAD83(2011)

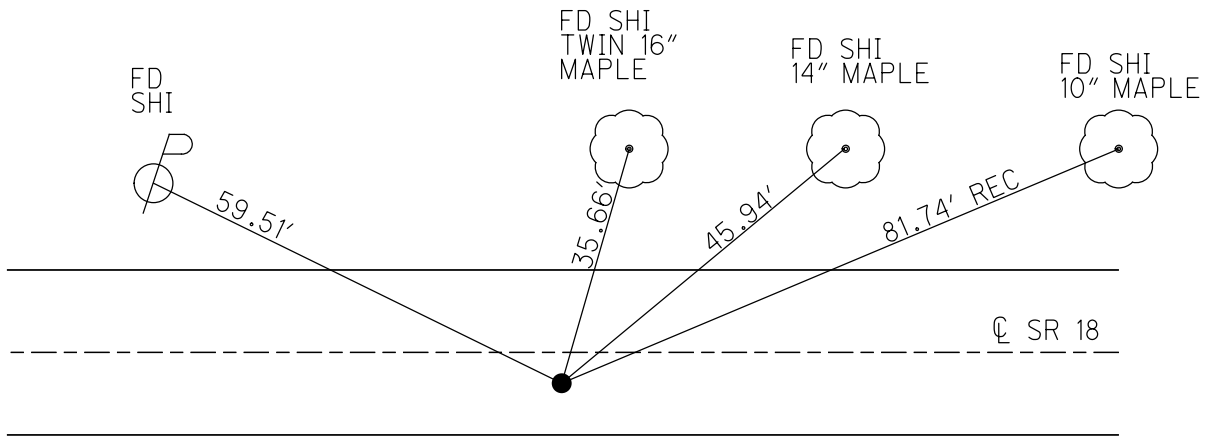
GEOID: 2012A

GRID: NORTHING: 582312.166

EASTING: 1524849.178



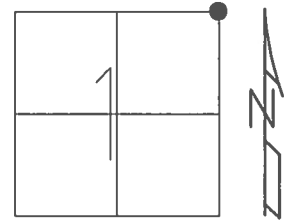
RECORD:
 FD SM.R.R.SPIKE
 1/10/07, SAH
 REF13
 6/27/08, KPM
 FD MAG/WASHER
 REF13
 6/17/16, JMR
 8/6/19, JFO



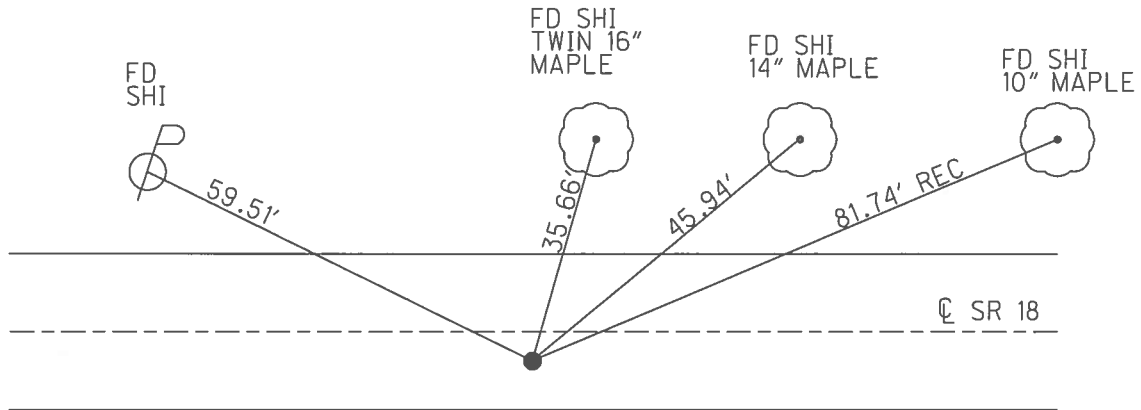
O.D.O.T. DISTRICT 2 SURVEY OFFICE (USE ONLY)

PERSONNEL _____ REFERENCE NO. 13 SHEET 5 OF 31
 NOTES NUHFER DATE 6/26/08 ROUTE SR 18
 H.C. MOSER WEATHER CLEAR COUNTY HENRY
 R.C. NUHFER TEMP. 83° TOWNSHIP MARION
 _____ SECTION 6
 _____ T 3 N R 7 E

TYPE MONUMENT SM.R.R.SPIKE
 ON SURFACE - ~~BELOW~~ ON _____
~~LEFT~~ - \odot PAV'T - RIGHT 3.2'
6.6' TO RT EDGE PAVEMENT
 S.L.M. 313+46
 GRID: NORTHING: 582312.166 EASTING: 1524849.178



RECORD:
 FD SM.R.R.SPIKE
 1/10/07, SAH
 REF13
 6/27/08, KPM
 FD MAG/WASHER
 REF13
 6/17/16, JMR



O.D.O.T. DISTRICT 2 SURVEY OFFICE (USE ONLY)

PERSONNEL

REFERENCE NO. 13

SHEET 5 OF 31

NOTES NUHFER

DATE 6/26/08

ROUTE SR 18

H.C. MOSER

WEATHER CLEAR

COUNTY HENRY

R.C. NUHFER

TEMP. 83°

TOWNSHIP MARION

SECTION 6

T 3 N R 7 E

TYPE MONUMENT SM.R.R.SPIKE

ON SURFACE - ~~BELOW~~ ON

~~LEFT~~ - CL PAV'T - RIGHT 3.2'

6.6' TO RT EDGE PAVEMENT

S.L.M. 313+46

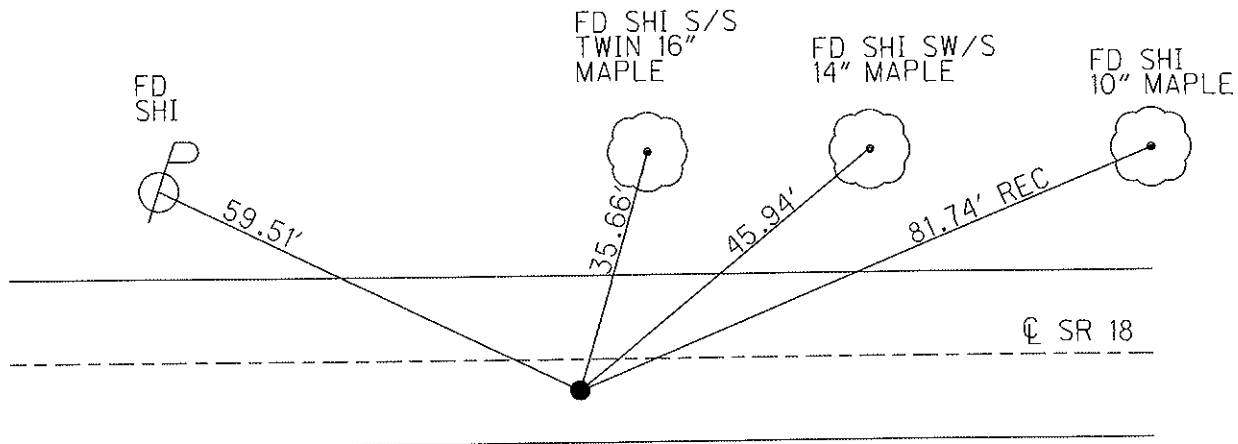
36	31
1	6



Grid: Northing: 582312.160 Easting: 1524849.066

FD SM.R.R.SPIKE
SAH, 1/10/07

GPS, REF 13
KPM, 6/27/08



O.D.O.T. DISTRICT 2 SURVEY OFFICE

PERSONNEL _____

REFERENCE NO. 13

SHEET _____ OF _____

NOTES SACKMAN

H.C. BARVHISEZ

R.C. LOCHERKE

DATE 8-12-87

WEATHER CLGAR

TEMP. +72

ROUTE SR 18

COUNTY HENRY

TOWNSHIP MARION

SECTION 6

T. 3 N R. 7 E

TYPE MONUMENT SMALL R.R. SPK

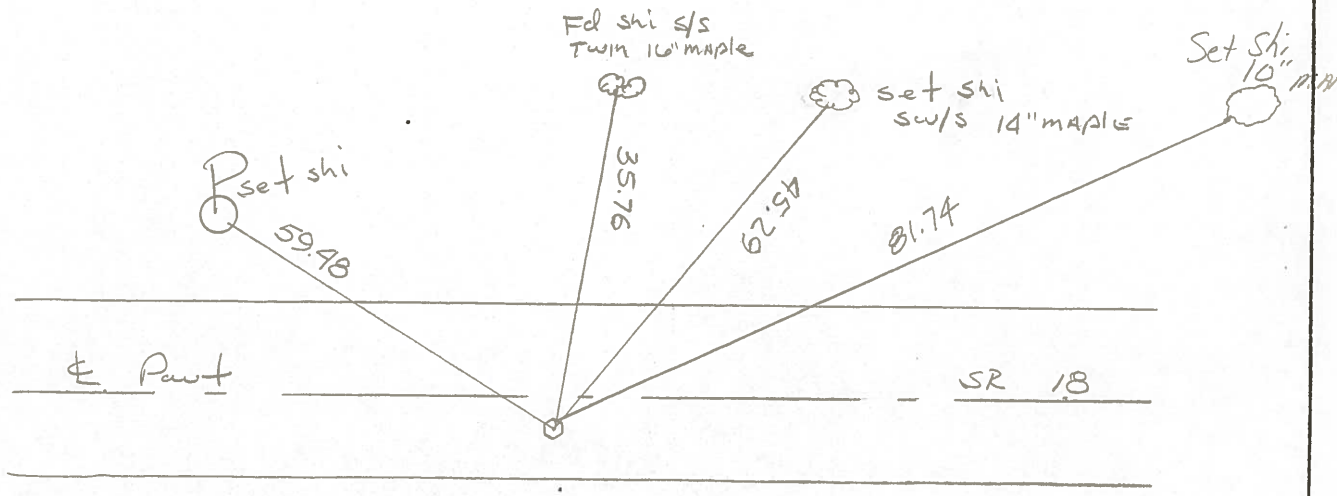
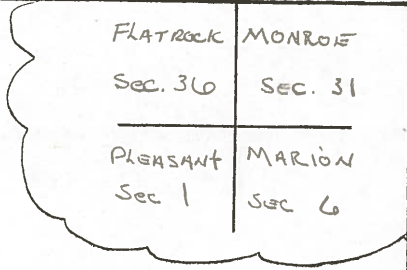
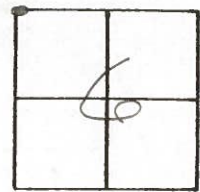
ON SURFACE - ~~BELOW~~ YES

~~LEFT - 0 PAVT.~~ - RIGHT 3.6

6.2 TO RT EDGE PAVEMENT

S.L.M. 313+46

*Set SMALL R.R. SPK
8-20-87
SWK*



County HENRY S.R. 18

Date 5-28-81

Township MARION

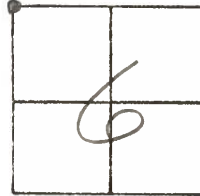
Weather clear

Section 6

Temp. +70°

T3N, R7E

Personnel S. Hoffmann



13
C. Loehrke
J. Householder

PROJECT STA. 313+54

Ed. R.R. SPK @ SURFACE

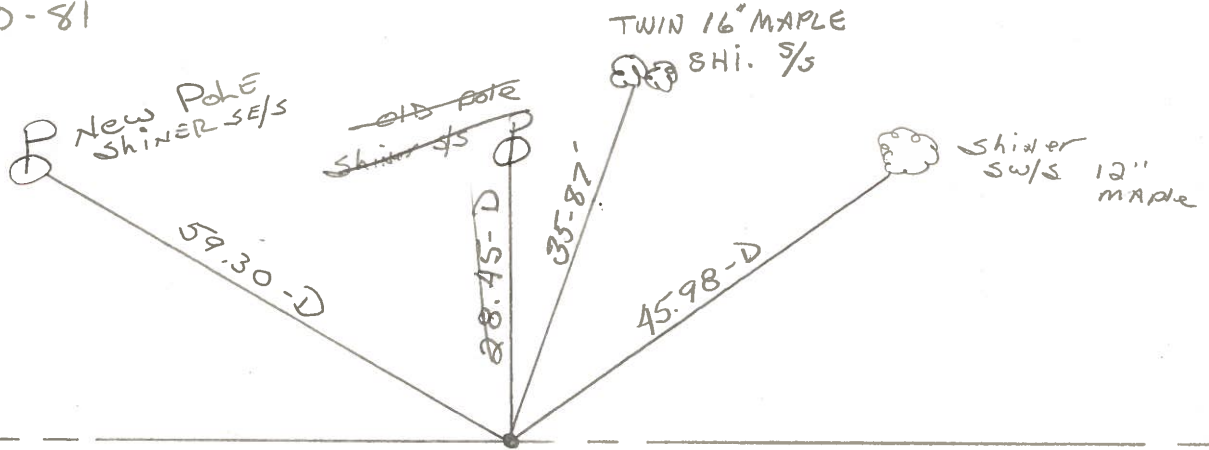
SET SMALL R.R. SPK.

12.4' TO N. Edge PAVT.

ON SURFACE

5.8' TO S. Edge PAVT.

8-20-81



S.R. 18

FLATROCK
 Sec 36

MONROE
 SEC. 31

PLEASANT
 Sec 1

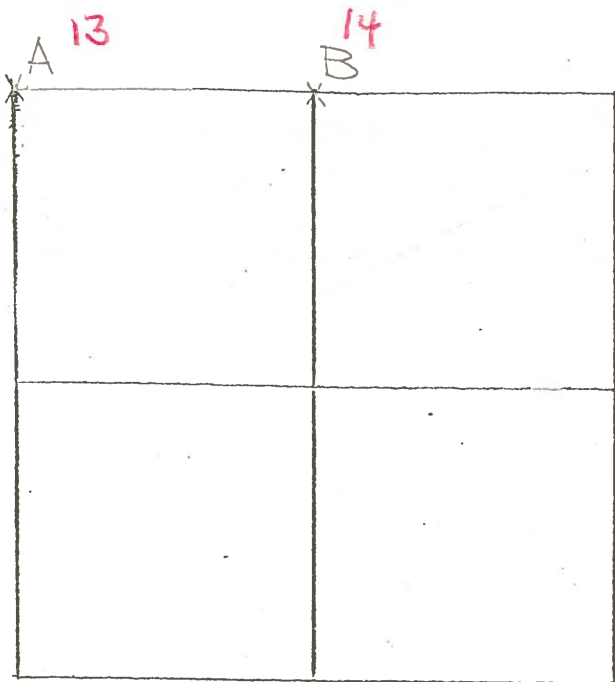
MARION
 SEC 6

COUNTY HENRY S.R. 19

SHEET 1 OF
T-3-N , R-7-E

TOWNSHIP MARION

SECTION 6



6- - 79
RW, JJ, GM

A- SEE S.W. COR. SEC. 6; MONROE TWP.

6-22-79 R.W, J.J, G.M.

B- STONE COULD NOT BE LOCATED.

RE-ESTABLISHED N¹/₄ POST BY SINGLE
PROPORTIONATE MEASUREMENT BETWEEN

N.W. CORNER AND N.E. CORNER OF

SECTION 6; MARION TWP. PLACED

CENTER PUNCHED RAILROAD SPIKE ON SURFACE. P.R.'s 6' N. & W.

RAILROAD SPIKE IS 6.4' NORTH OF SOUTH EDGE OF 18' PAVEMENT.

128.35' W.N.W. TO SHINER ^{SE}/_S ⚡

127.85' E.N.E. TO DUPLEX ^S/_S ⚡

26.26' S. TO N.W. COR. CONC. ANCHOR POST

78.02' W. TO S¹/₄ POST; SEC. 31; MONROE TWP.

PERSONNEL	TITLE	PERSONNEL	TITLE	COUNTY	Henry	DATE	Jan. 21-78
I. Stone				S. R.	18	WEATHER	Cold
W. Denno				SEC.		TEMP.	25°
R. Michalak							
D. Curtis							

DESCRIPTION References To Control Points JOB NO. 02999(c)

