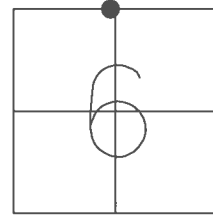


O.D.O.T. DISTRICT 2 SURVEY OFFICE (USE ONLY)

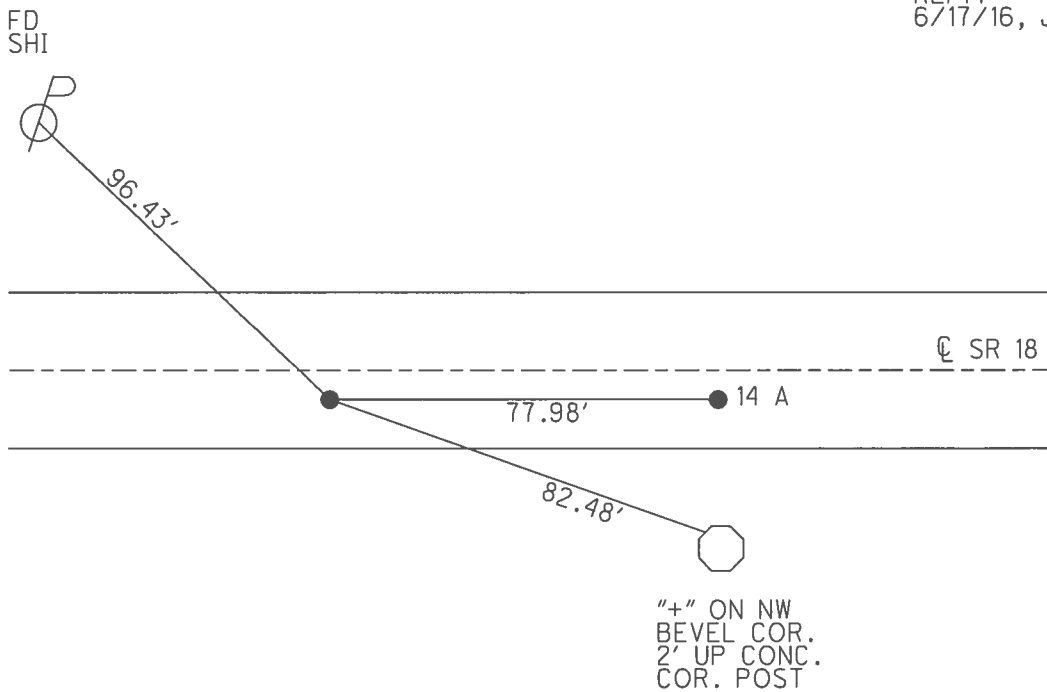
PERSONNEL \_\_\_\_\_ REFERENCE NO. 14 SHEET 6 OF 31  
 NOTES NUHFER DATE 6/26/08 ROUTE SR 18  
 H.C. MOSER WEATHER CLEAR COUNTY HENRY  
 R.C. NUHFER TEMP. 83° TOWNSHIP MARION  
 \_\_\_\_\_ SECTION 6  
 \_\_\_\_\_ T 3 N R 7 E

TYPE MONUMENT P.K./WASHER  
 ON SURFACE - ~~BELOW~~ ON \_\_\_\_\_  
~~LEFT~~ -  $\text{\textcircled{C}}$  PAV'T - RIGHT 3.6'  
5.7' TO RT EDGE PAVEMENT  
 S.L.M. 339+90  
 GRID: NORTHING: 582268.663 EASTING: 1527501.154



NOTE: MONROE TWP  
 SEC 31 S 1/4 POST

RECORD:  
 FD P.K./WASHER  
 1/10/07, SAH  
 REF14  
 6/27/08, KPM  
 FD MAG/WASHER  
 REF14  
 6/17/16, JMR



O.D.O.T. DISTRICT 2 SURVEY OFFICE (USE ONLY)

PERSONNEL

REFERENCE NO. 14

SHEET 6 OF 31

NOTES NUHFER

DATE 6/26/08

ROUTE SR 18

H.C. MOSE

WEATHER CLEAR

COUNTY HENRY

R.C. NUHFER

TEMP. 83°

TOWNSHIP MARION

SECTION 6

T 3 N R 7 E

TYPE MONUMENT P.K./WASHER

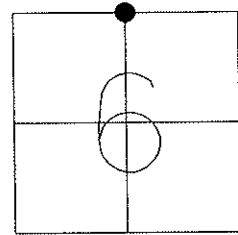
ON SURFACE - ~~BELOW~~ ON

~~LEFT~~ - CL PAV'T - RIGHT 3.6'

5.7' TO RT EDGE PAVEMENT

S.L.M. 339+90

Grid: Northing: 582268.579 Easting: 1527501.046



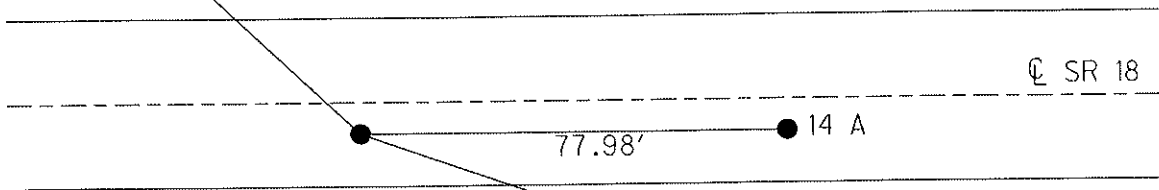
FD P.K./WASHER  
SAH, 1/10/07

GPS, REF 14  
KPM, 6/27/08

FD SHI  
SE/S



96.43'



"+" ON NW  
BEVEL COR.  
2' UP CONC.  
COR. POST

# O.D.O.T. DISTRICT 2 SURVEY OFFICE

PERSONNEL \_\_\_\_\_

REFERENCE NO. 14

SHEET 1 OF \_\_\_\_\_

NOTES BARNHISEL

H.C. \_\_\_\_\_

R.C. Loehke

DATE 3-30-89

WEATHER cloudy - RAIN

TEMP. +40°

ROUTE 18

COUNTY HENRY

TOWNSHIP MARION

SECTION 6

T3 N R 7 E

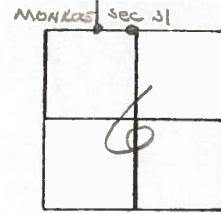
TYPE MONUMENT P.K./WASHER - P.K.WASHER

ON SURFACE - BELOW YES - YES

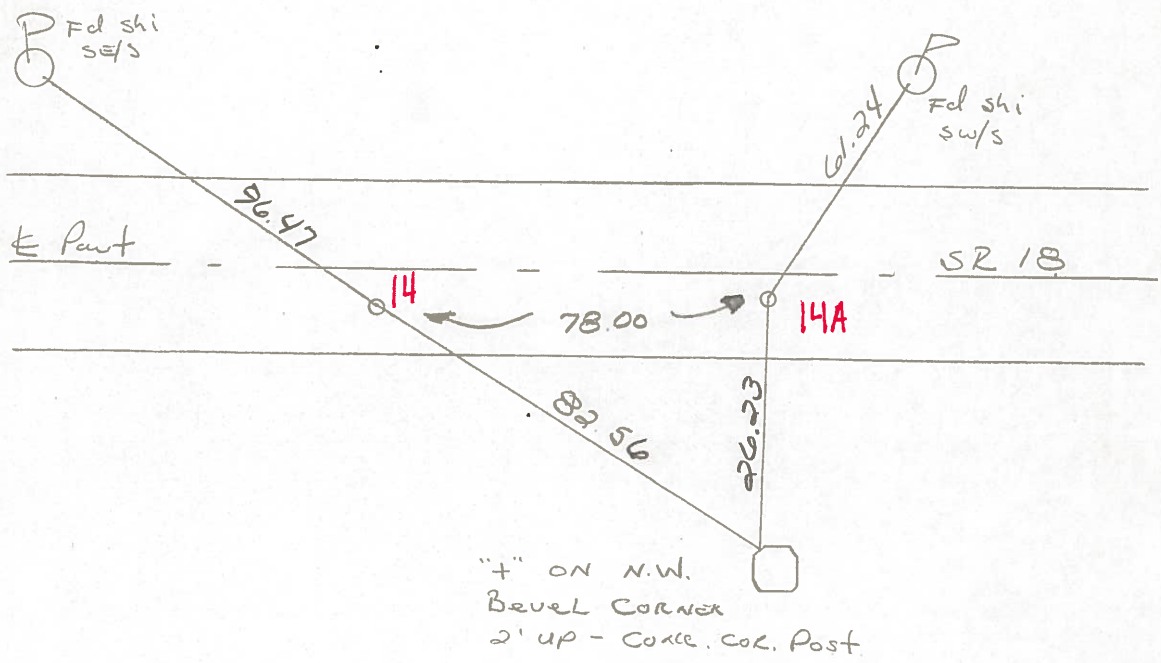
~~LEFT - 1 PAV'T.~~ - RIGHT 3.4' - 3.2'

0.3 TO RT EDGE PAVEMENT

S.L.M. 339+90 - 340+68



Set Sm RR Spt  
 6-13-89  
 M.D.B.



ODOT. DISTRICT 2 SURVEY OFFICE

SHEET 8 OF

County HENRY S.R. 18

Date 5-28-81 8-19-81

Township MARION

Weather Clear

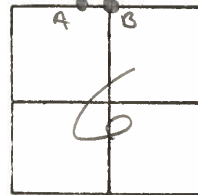
Section 6

Temp. +70°

T3N, R7E

max 120' SEC 31

Personnel S Hoffman



# 14

C Loehrke

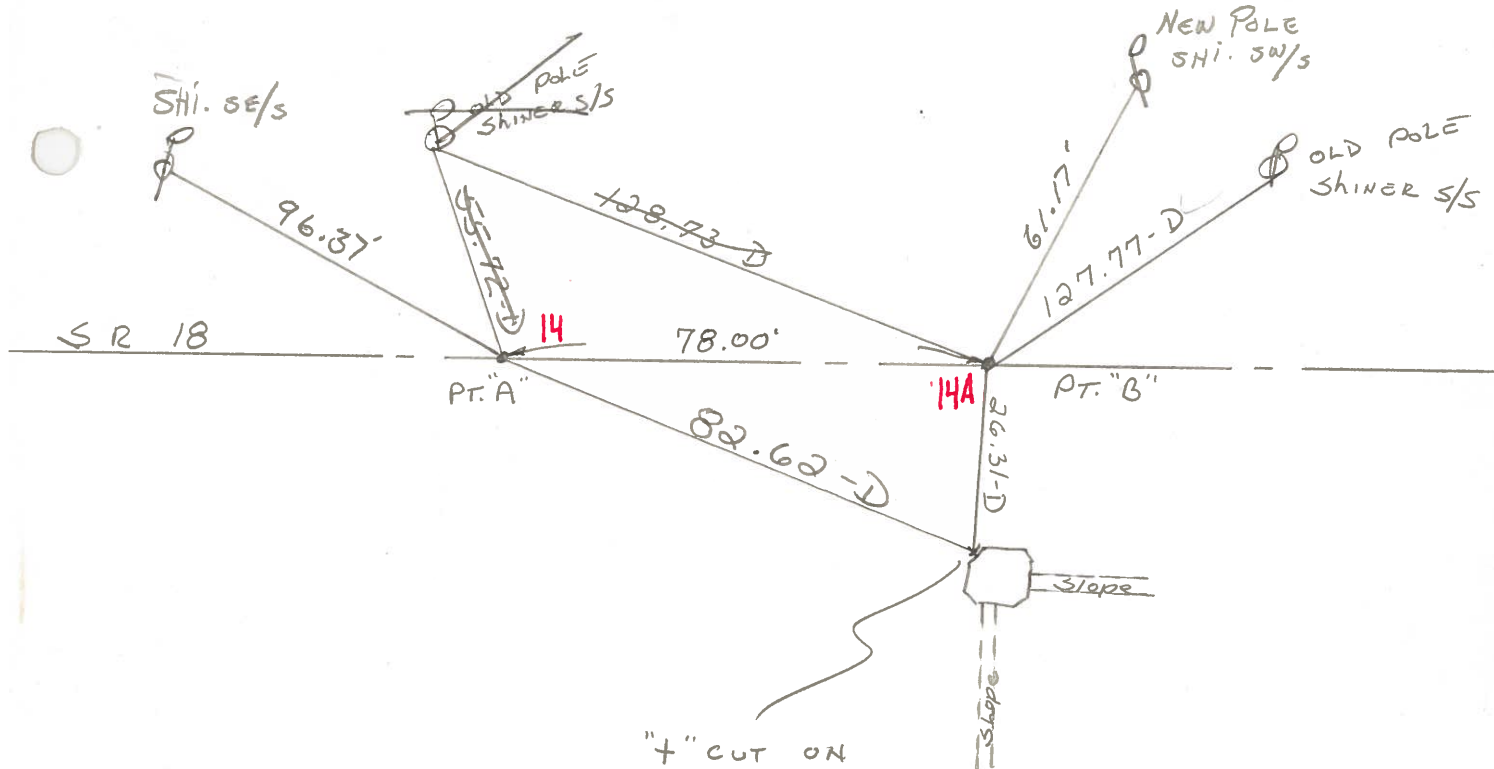
L. Householder

PT. A Fd. R.R. SPK @ SURFACE  
 11.8' TO N. Edge PAUT  
 SET P.K. & WASHER 6.6' TO S. Edge PAUT

PROJECT STA. ± 340+07

PT. B Fd. R.R. SPK @ SURFACE  
 12.0' TO N. Edge PAUT  
 6.7' TO S. Edge PAUT

PROJECT STA ± 348+85



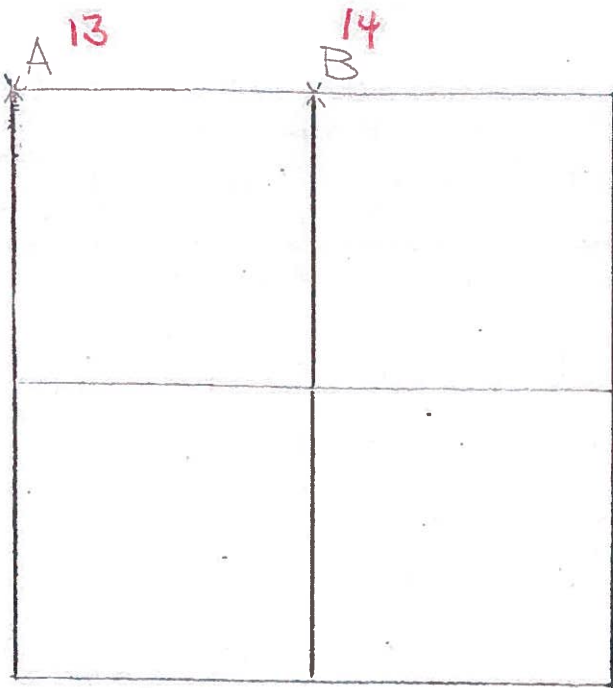
"+" CUT ON  
 N.W. Bevel corner,  
 2' up from ground  
 ON CONC. Fence Corner Post

WENT HENRY ~~V.K. 17~~

1-3-N, R-1-E

TOWNSHIP MARION

SECTION 6



6- -79  
RW, JJ, GM

A-SEE S.W. COR. SEC. 6; MONROE TWP.

6-22-79 R.W, J.J, G.M.

B-STONE COULD NOT BE LOCATED.

RE-ESTABLISHED N<sup>1</sup>/<sub>4</sub> POST BY SINGLE

PROPORTIONATE MEASUREMENT BETWEEN

N.W. CORNER AND N.E. CORNER OF

SECTION 6; MARION TWP. PLACED

CENTER PUNCHED RAILROAD SPIKE ON SURFACE. P.R.'s 6' N. & W.

RAILROAD SPIKE IS 6.4' NORTH OF SOUTH EDGE OF 18' PAVEMENT.

128.35' W.N.W. TO SHINER <sup>SE</sup>/<sub>S</sub> Ⓟ

127.85' E.N.E. TO DUPLEX <sup>S</sup>/<sub>S</sub> Ⓟ

26.26' S. TO N.W. COR. CONC. ANCHOR POST

78.02' W. TO S<sup>1</sup>/<sub>4</sub> POST; SEC. 31; MONROE TWP.