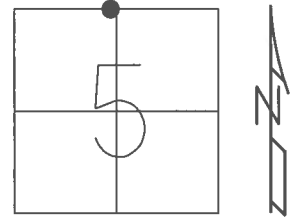


O.D.O.T. DISTRICT 2 SURVEY OFFICE (USE ONLY)

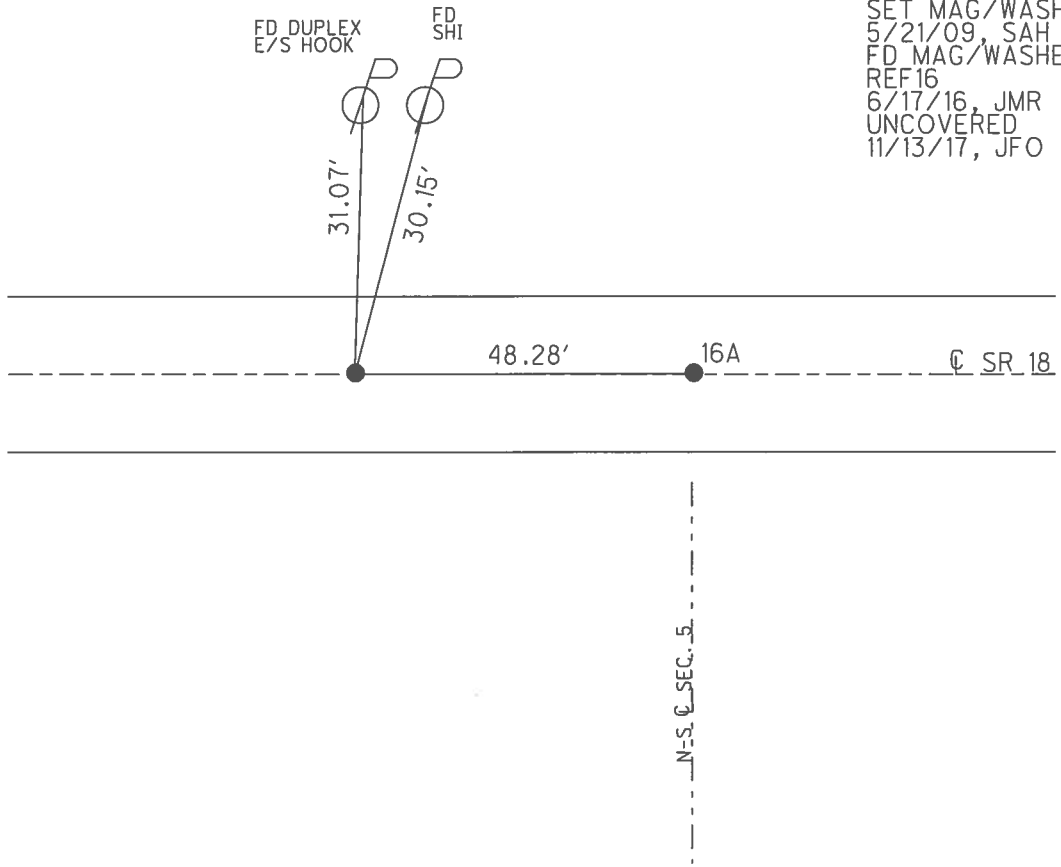
PERSONNEL _____ REFERENCE NO. 16 SHEET 10 OF 31
 NOTES NUHFER DATE 6/26/08 ROUTE SR 18
 H.C. MOSER WEATHER SUNNY COUNTY HENRY
 R.C. NUHFER TEMP. 85° TOWNSHIP MARION
 _____ SECTION 5
 _____ T 3 N R 7 E

TYPE MONUMENT P.K./WASHER
 ON SURFACE - ~~BELOW~~ ON _____
~~LEFT~~ - ☉ PAV'T - RIGHT 2.2'
7.4' TO RT EDGE PAVEMENT
 S.L.M. 392+88
 GRID: NORTHING: 582197.581 EASTING: 1532795.821



NOTE: MONROE TWP
 SEC 32 S¹/₄POST

RECORD:
 SET SM.R.R.SPIKE
 6/13/89, MDB
 FD P.K./WASHER
 1/10/07, SAH
 REF16
 6/27/08, KPM
 SET MAG/WASHER
 5/21/09, SAH
 FD MAG/WASHER
 REF16
 6/17/16, JMR
 UNCOVERED
 11/13/17, JFO

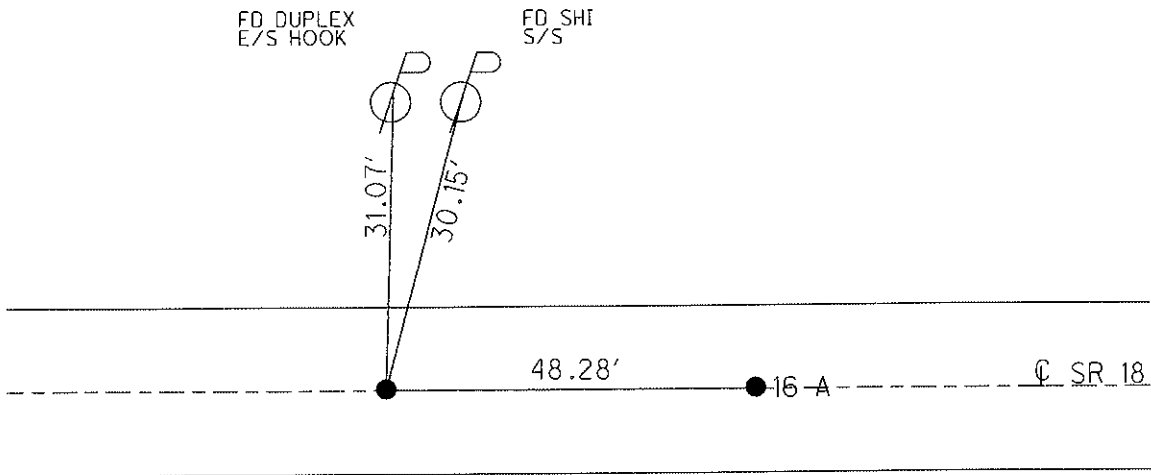
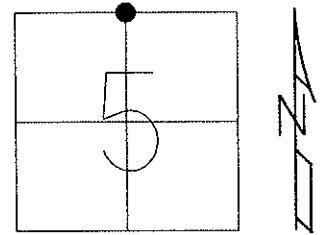


O.D.O.T. DISTRICT 2 SURVEY OFFICE (USE ONLY)

PERSONNEL	REFERENCE NO. <u>16</u>	SHEET <u>10</u> OF <u>31</u>
NOTES <u>NUHFER</u>	DATE <u>6/26/08</u>	ROUTE <u>SR 18</u>
H.C. <u>MOSE</u>	WEATHER <u>SUNNY</u>	COUNTY <u>HENRY</u>
R.C. <u>NUHFER</u>	TEMP. <u>85°</u>	TOWNSHIP <u>MARION</u>
		SECTION <u>5</u>
		T <u>3</u> N R <u>7</u> E

TYPE MONUMENT P.K./WASHER
 ON SURFACE - ~~BELOW~~ ON
~~LEFT~~ - CL PAV'T - RIGHT 2.2'
7.4' TO RT EDGE PAVEMENT
 S.L.M. 3952+88

Grid: Northing: 582197.517 Easting: 1532795.704



SET SM.R.R.SPIKE
 6/13/89, MDB
 FD P.K./WASHER
 SAH, 1/10/07
 GPS, REF 16
 KPM, 6/27/08
 SET MAG/WASHER
 5/21/09, SAH

N-S CL SEC. 5

O.D.O.T. DISTRICT 2 SURVEY OFFICE

PERSONNEL _____

REFERENCE NO. 16

SHEET 3 OF _____

NOTES BARNHISEL

H.C. _____

DATE 3-30-89

ROUTE 18

R.C. Loehke

WEATHER cloudy - RAIN

COUNTY HENRY

TEMP. +40°

TOWNSHIP MARION

SECTION 5

T 3 N R 7 E

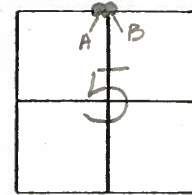
TYPE MONUMENT PKWASHER PKWASHER A+B

ON SURFACE - BELOW YES, YES

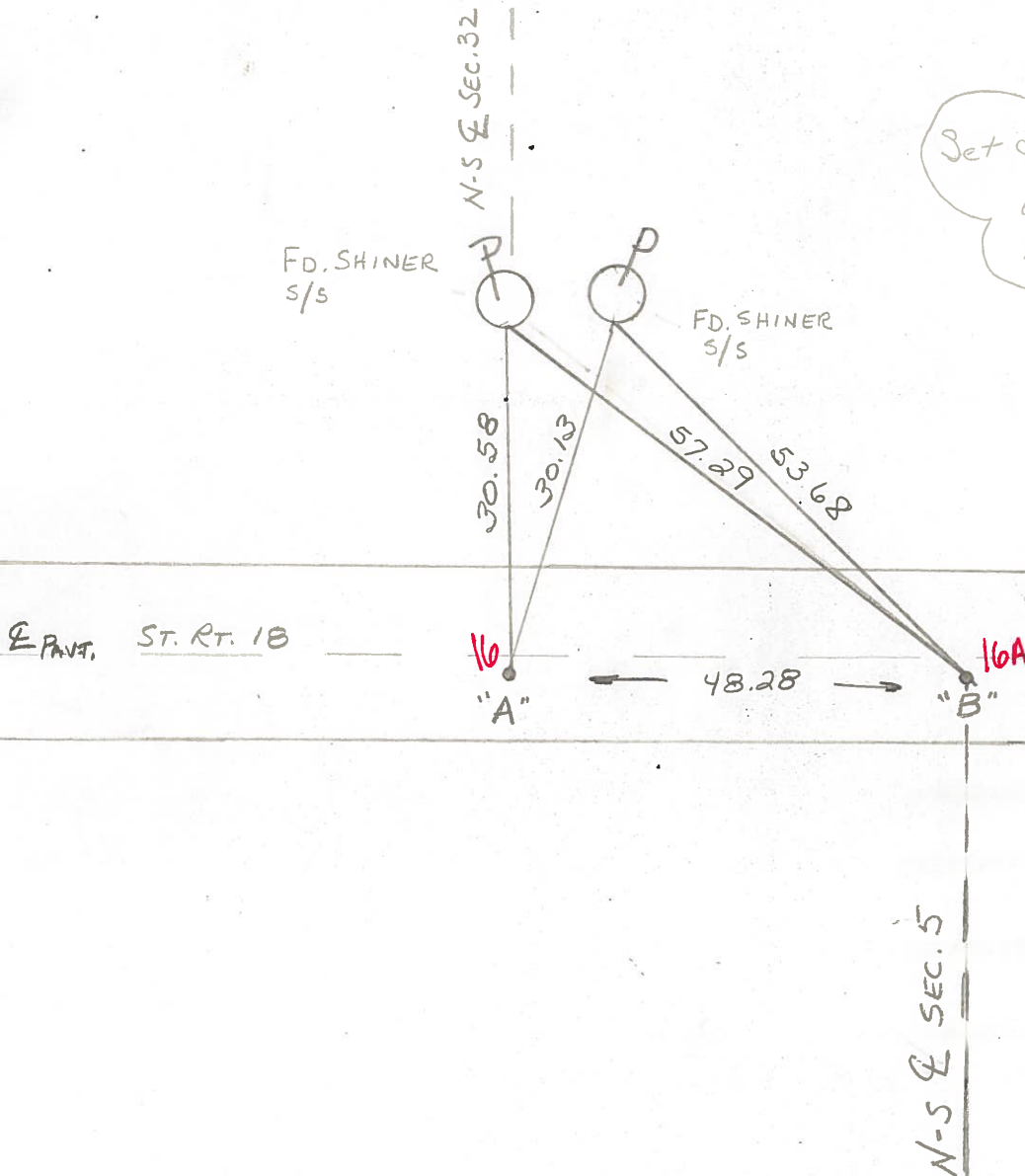
LEFT - CL PAV'T. - RIGHT 1.9 - 1.8

8.1 TO RT. EDGE PAVEMENT

S.L.M. 392+88 393+36



Set Sm RR Spk's
6-13-89
M.D.B.



O.D.O.T. DISTRICT 2 SURVEY OFFICE

SHEET 10 OF

County HENRY S.R. 18

Date 5-28-81 8-19-81

Township MARION

Weather Clear

Section 5

Temp. +70°

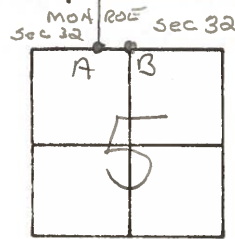
T3N, R7E

Personnel S. Hoffmann

C. Loehrke

J. Householder

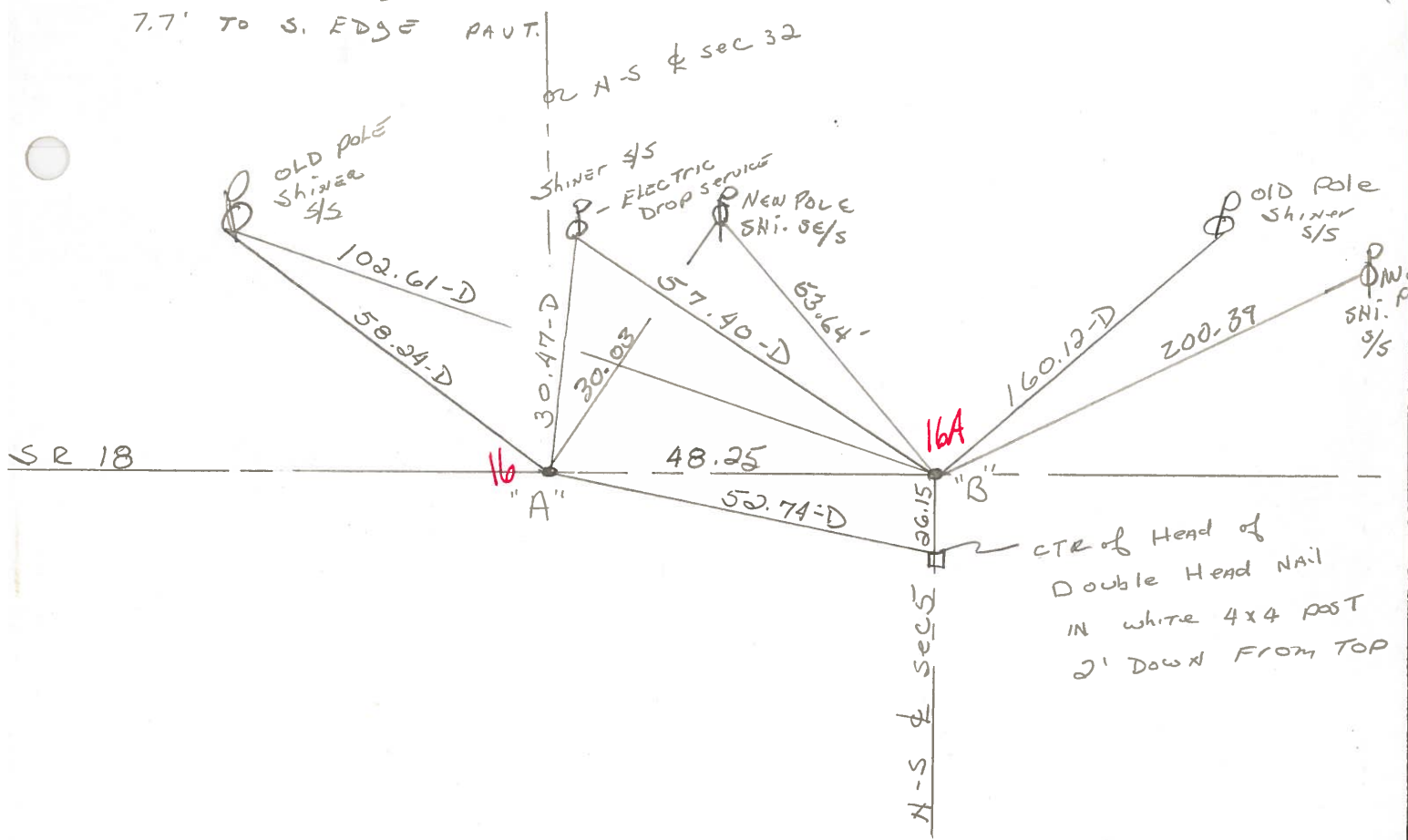
#16



PT. A Fd. R.R. SPK @ SURFACE
 P.K. NAIL 11.01' TO N. EDGE PAUT.
 WASHER 7.53' TO S. EDGE PAUT.
 PT. B Fd. R.R. SPK @ SURFACE
 11.08' TO N. EDGE PAUT.
 7.7' TO S. EDGE PAUT.

PROJECT STA. ± 393+04

PROJECT STA. ± 393+52



PERSONNEL TITLE PERSONNEL TITLE

Stone

COUNTY Henry

DATE 29 Oct. 74

Deno

S. R. #18

WEATHER Cloudy

Michalak

SEC. Monroe - Marion Twp. TEMP. 60°

Curtis

DESCRIPTION

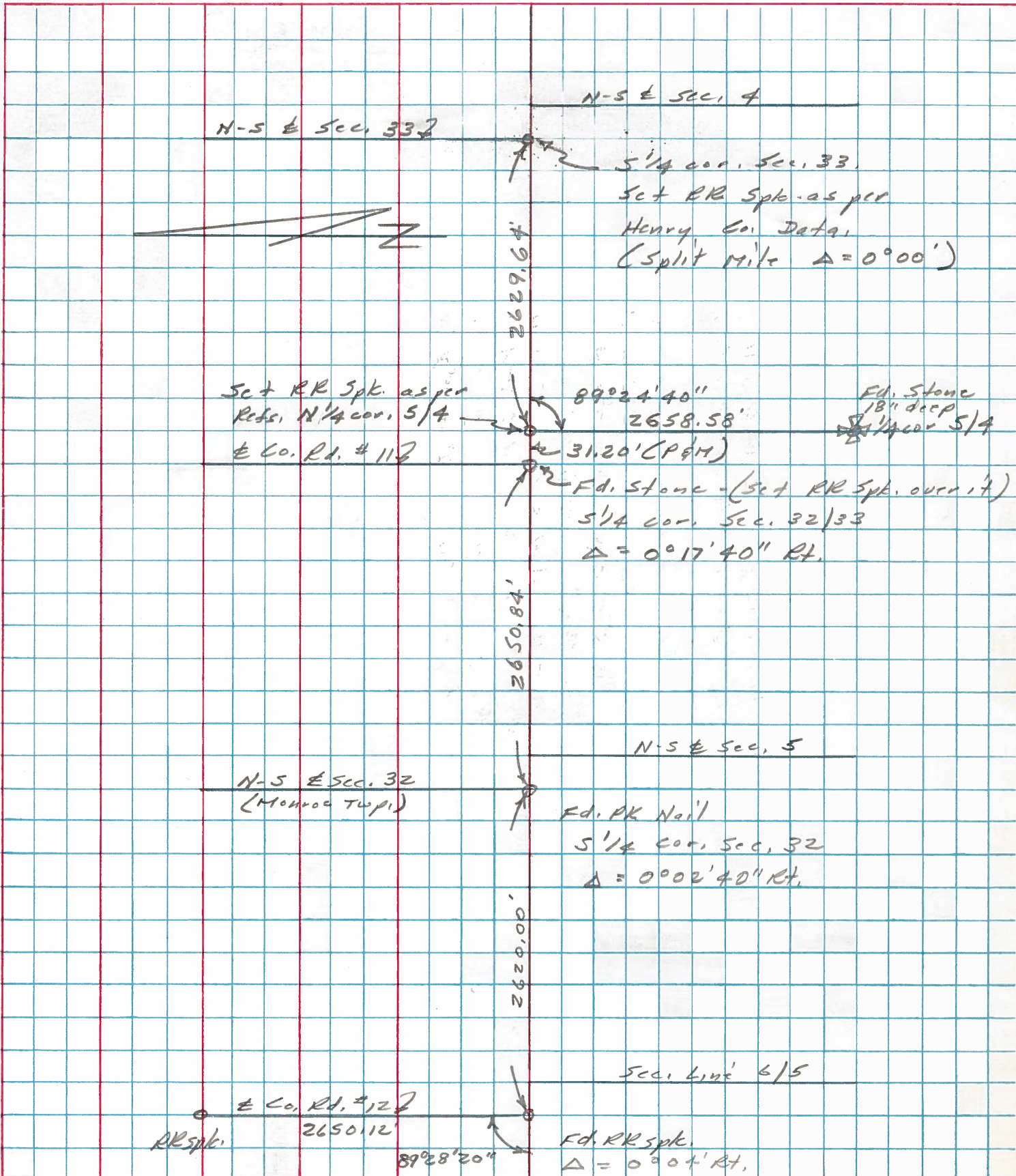
Alignment

JOB NO.

LEFT

CENTER LINE

RIGHT



PERSONNEL	TITLE	PERSONNEL	TITLE
W. Denno			
R. Micholok			
D. Curtis			

COUNTY Henry DATE Oct. 3, '27

S. R. 18 WEATHER Warm

SEC. _____ TEMP. 90°

DESCRIPTION References To Control Points JOB NO. 02999101

