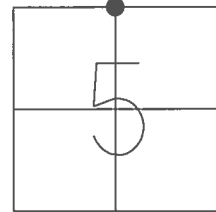


O.D.O.T. DISTRICT 2 SURVEY OFFICE (USE ONLY)

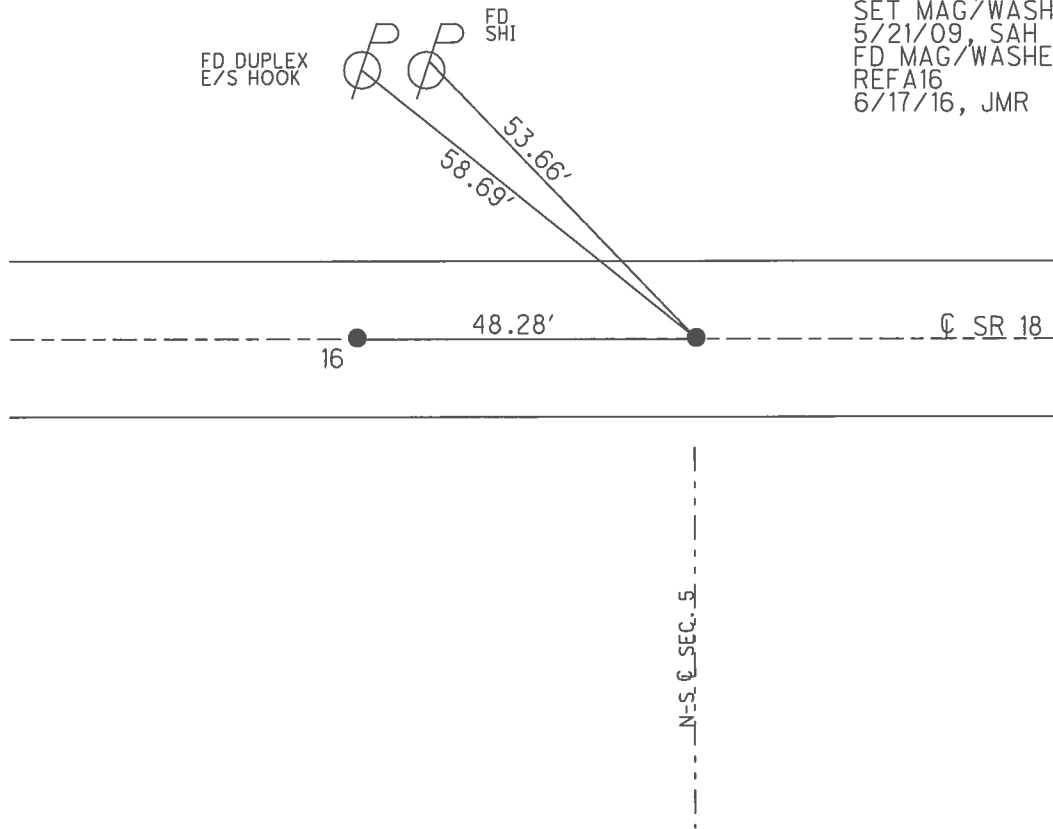
PERSONNEL	REFERENCE NO.	16 A	SHEET	11	OF	31
NOTES	NUHFER	DATE	6/26/08	ROUTE	SR 18	
H.C.	MOSER	WEATHER	SUNNY	COUNTY	HENRY	
R.C.	NUHFER	TEMP.	85°	TOWNSHIP	MARION	
				SECTION	5	
				T	3 N	R
					7 E	

TYPE MONUMENT P.K./WASHER  
 ON SURFACE - ~~BELOW~~ ON  
~~LEFT~~ -  $\text{C}$  PAV'T - RIGHT 2.2'  
7.4' TO RT EDGE PAVEMENT  
 S.L.M. 393+36



GRID: NORTHING: 582197.090 EASTING: 1532844.102

RECORD:  
 SET SM.R.R.SPIKE  
 6/13/89, MDB  
 FD P.K./WASHER  
 1/10/07, SAH  
 REFA16  
 6/27/08, KPM  
 SET MAG/WASHER  
 5/21/09, SAH  
 FD MAG/WASHER  
 REFA16  
 6/17/16, JMR



O.D.O.T. DISTRICT 2 SURVEY OFFICE (USE ONLY)

PERSONNEL

REFERENCE NO. 16 A

SHEET 11 OF 31

NOTES NUHFER

DATE 6/26/08

ROUTE SR 18

H.C. MOSER

WEATHER SUNNY

COUNTY HENRY

R.C. NUHFER

TEMP. 85°

TOWNSHIP MARION

SECTION 5

T 3 N R 7 E

TYPE MONUMENT P.K./WASHER

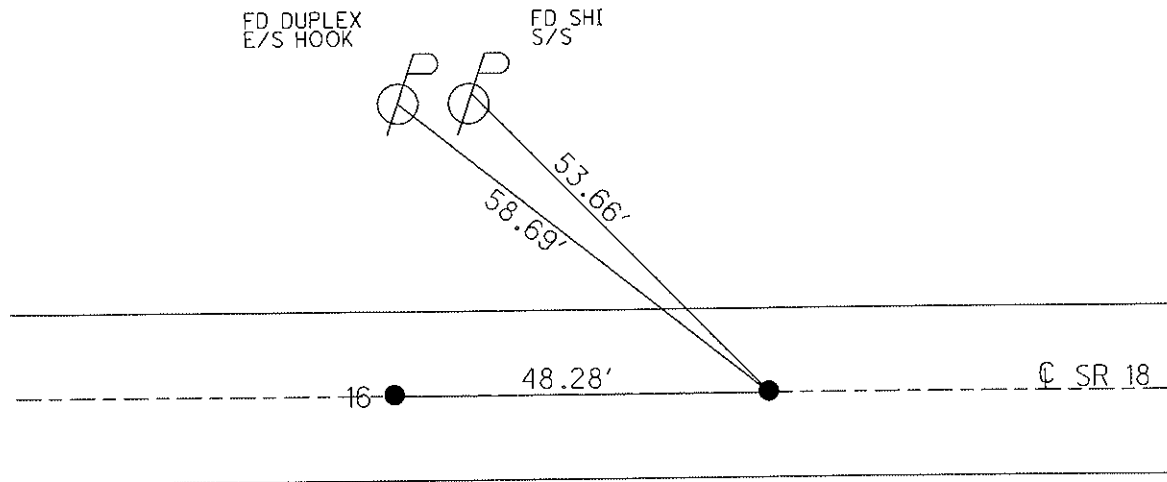
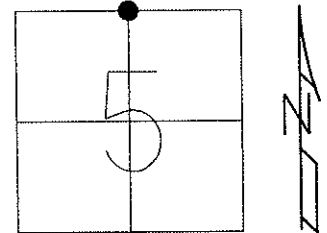
ON SURFACE - ~~BELOW~~ ON

~~LEFT~~ - Q PAV'T - RIGHT 2.2'

7.4' TO RT EDGE PAVEMENT

S.L.M. 393+36

Grid: Northing: 582196.911 Easting: 1532843.980



SET SM.R.R.SPIKE  
6/13/89, MDB

FD P.K./WASHER  
SAH, 1/10/07

GPS, REF A16  
KPM, 6/27/08

SET MAG/WASHER  
5/21/09, SAH

N-S Q SEC. 5

# O.D.O.T. DISTRICT 2 SURVEY OFFICE

PERSONNEL \_\_\_\_\_

REFERENCE NO. 16

SHEET 3 OF \_\_\_\_\_

NOTES BARNHISEL

H.C. \_\_\_\_\_

DATE 3-30-89

ROUTE 18

R.C. Loehke

WEATHER cloudy - RAIN

COUNTY HENRY

TEMP. +40°

TOWNSHIP MARION

SECTION 5

T 3 N R 7 E

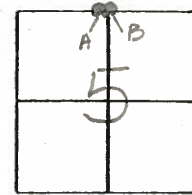
TYPE MONUMENT PKWASHER PKWASHER A+B

ON SURFACE - BELOW YES, YES

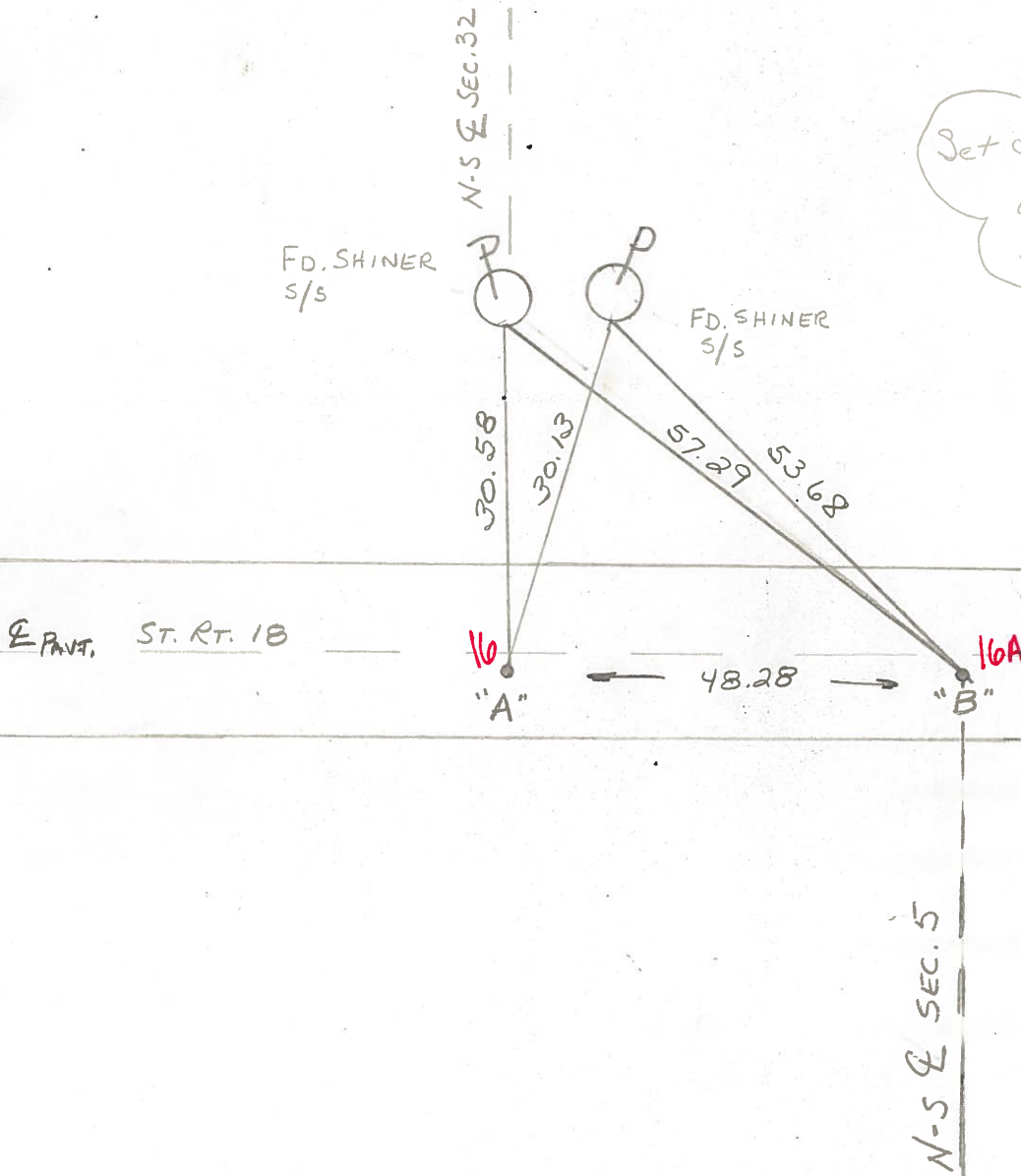
LEFT - CL PAV'T. - RIGHT 1.9 - 1.8

8.1 TO RT. EDGE PAVEMENT

S.L.M. 392+88 393+36



Set Sm RR Spk's  
 6-13-89  
 M.D.B.



County HENRY S.R. 18

Date 5-28-81 8-19-81

Township MARION

Weather Clear

Section 5

Temp. +70°

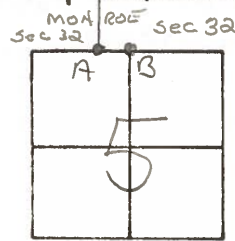
T3N, R7E

Personnel S. Hoffmann

C. Loehrke

J. Householder

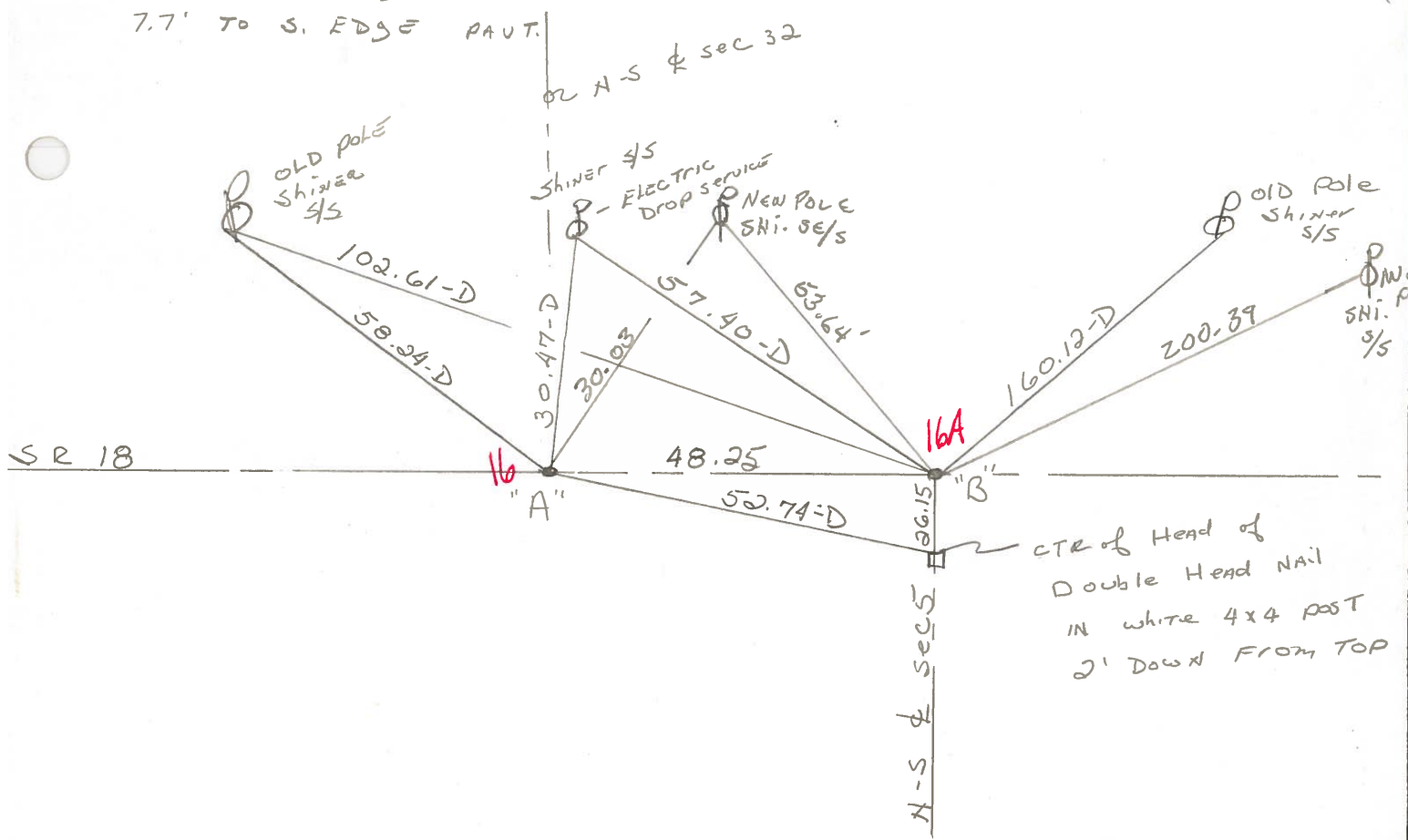
#16



PT. A Fd. R.R. SPK @ SURFACE  
 P.K. NAIL 11.01' TO N. EDGE PAUT.  
 WASHER 7.53' TO S. EDGE PAUT.  
 PT. B Fd. R.R. SPK @ SURFACE  
 11.08' TO N. EDGE PAUT.  
 7.7' TO S. EDGE PAUT.

PROJECT STA. ± 393+04

PROJECT STA. ± 393+52



PERSONNEL TITLE PERSONNEL TITLE

Stone

COUNTY Henry

DATE 29 Oct. 74

Deno

S. R. #18

WEATHER Cloudy

Michalak

SEC. Monroe - Marion Twp. TEMP. 60°

Curtis

DESCRIPTION

Alignment

JOB NO.

LEFT

CENTER LINE

RIGHT

