

O.D.O.T. DISTRICT 2 SURVEY OFFICE (USE ONLY)

PERSONNEL

REFERENCE NO. 19

SHEET 16 OF 31

NOTES NUHFER DATE 6/26/08  
 H.C. MOSER WEATHER SUNNY  
 R.C. NUHFER TEMP. 85°

ROUTE SR 18  
 COUNTY HENRY  
 TOWNSHIP MONROE  
 SECTION 33

DWG BY NIESE PID 105662

T 4 N R 7 E

TYPE MONUMENT P.K./WASHER

ON SURFACE - ~~BELOW~~ ON

OFFSET  $\varnothing$  PAVEMENT 0.8' ~~LT~~ : RT

8.5' TO RT EDGE PAVEMENT

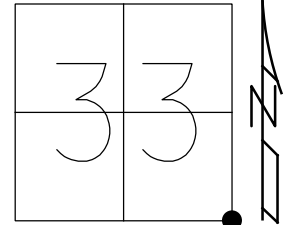
STATION: 472+63

HORZ.DATUM: NAD83 (2011)

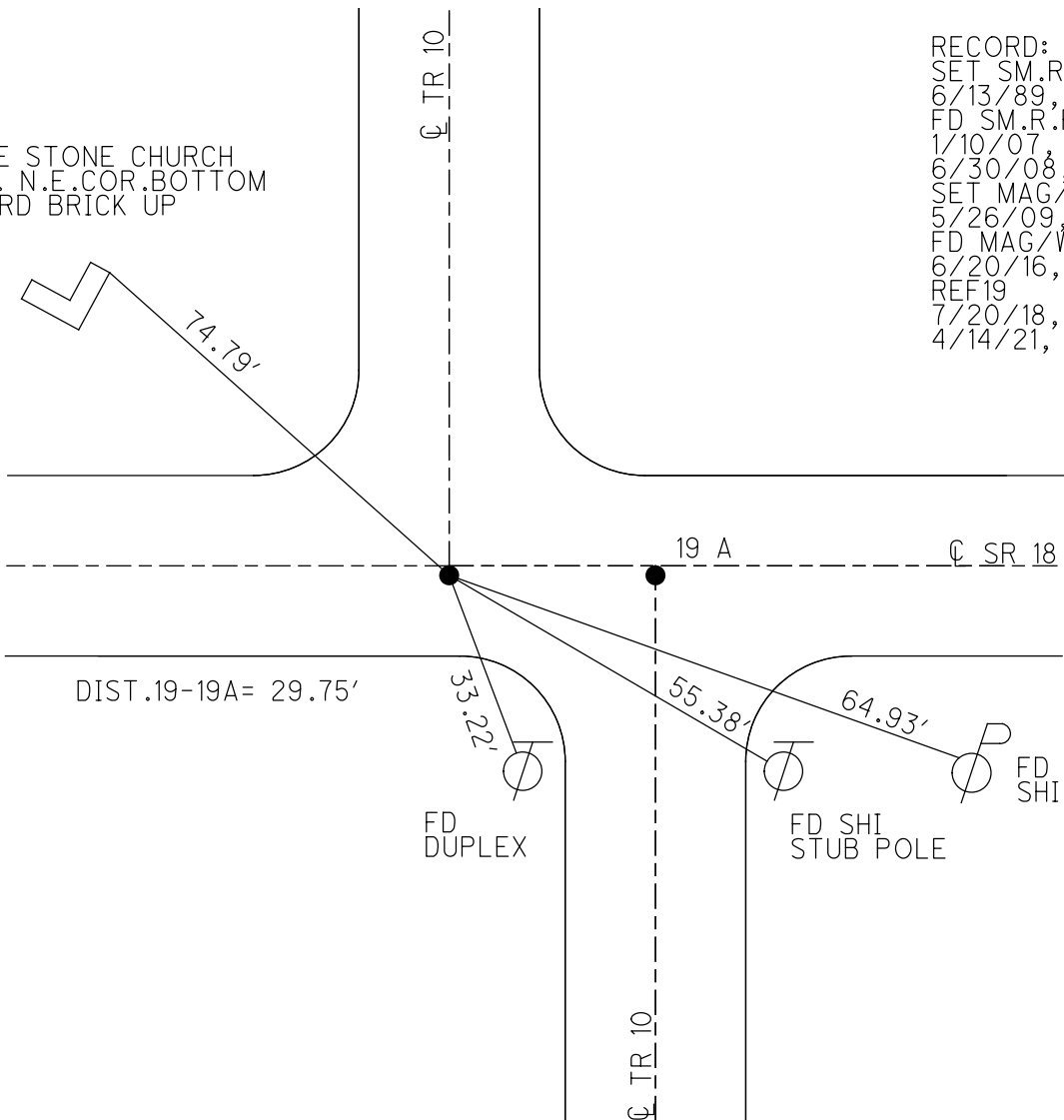
GEOID: NAVD88 2012A

GRID: NORTHING: 582059.532

EASTING: 1540765.351



WHITE STONE CHURCH  
 SIGN. N.E.COR.BOTTOM  
 OF 3RD BRICK UP

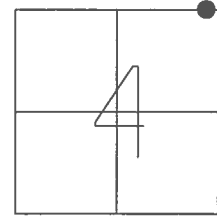


RECORD:  
 SET SM.R.R.SPIKE  
 6/13/89, MDB  
 FD SM.R.R.SPIKE  
 1/10/07, SAH  
 6/30/08, KPM  
 SET MAG/WASHER  
 5/26/09, SAH  
 FD MAG/WASHER  
 6/20/16, JFO  
 REF19  
 7/20/18, JFO  
 4/14/21, JFO

O.D.O.T. DISTRICT 2 SURVEY OFFICE (USE ONLY)

PERSONNEL \_\_\_\_\_ REFERENCE NO. 19 SHEET 16 OF 31  
 NOTES NUHFER DATE 6/26/08 ROUTE SR 18  
 H.C. MOSER WEATHER SUNNY COUNTY HENRY  
 R.C. NUHFER TEMP. 85° TOWNSHIP MARION  
 SECTION 4  
 T 3 N R 7 E

TYPE MONUMENT P.K./WASHER  
 ON SURFACE - ~~BELOW~~ ON \_\_\_\_\_  
~~LEFT~~ - CL PAV'T - RIGHT 0.8'  
8.5' TO RT EDGE PAVEMENT  
 S.L.M. 472+63

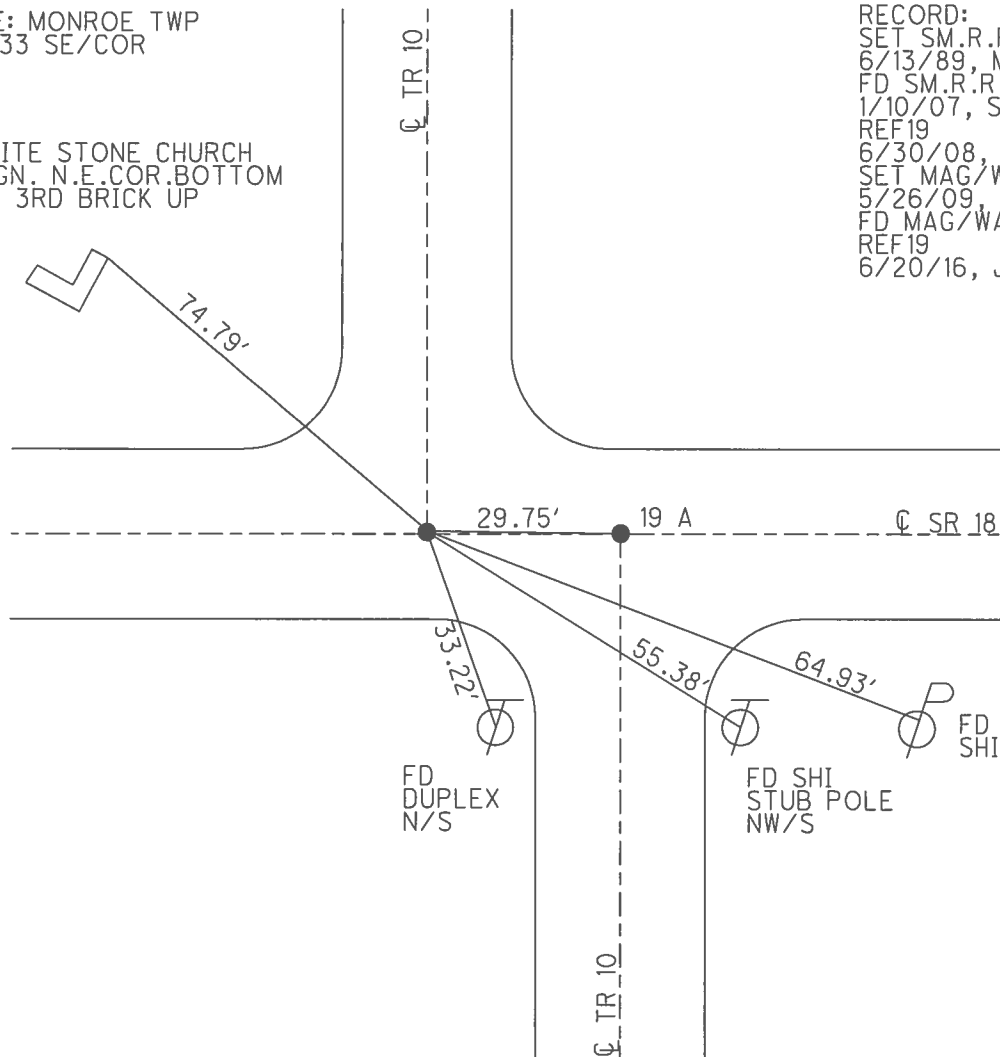


GRID: NORTHING: 582059.532 EASTING: 1540765.351

NOTE: MONROE TWP  
 SEC 33 SE/COR

WHITE STONE CHURCH  
 SIGN. N.E.COR.BOTTOM  
 OF 3RD BRICK UP

RECORD:  
 SET SM.R.R.SPIKE  
 6/13/89, MDB  
 FD SM.R.R.SPIKE  
 1/10/07, SAH  
 REF19  
 6/30/08, KPM  
 SET MAG/WASHER  
 5/26/09, SAH  
 FD MAG/WASHER  
 REF19  
 6/20/16, JFO



O.D.O.T. DISTRICT 2 SURVEY OFFICE (USE ONLY)

PERSONNEL

REFERENCE NO. 19

SHEET 16 OF 31

NOTES NUHFER

DATE 6/26/08

ROUTE SR 18

H.C. MOSER

WEATHER SUNNY

COUNTY HENRY

R.C. NUHFER

TEMP. 85°

TOWNSHIP MARION

SECTION 3

T 3 N R 7 E

TYPE MONUMENT P.K./WASHER

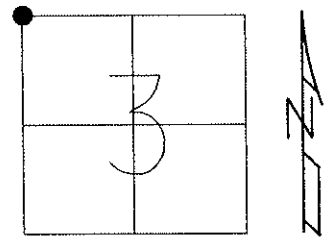
ON SURFACE - ~~BELOW~~ ON

~~LEFT~~ - Q PAV'T - RIGHT 0.8'

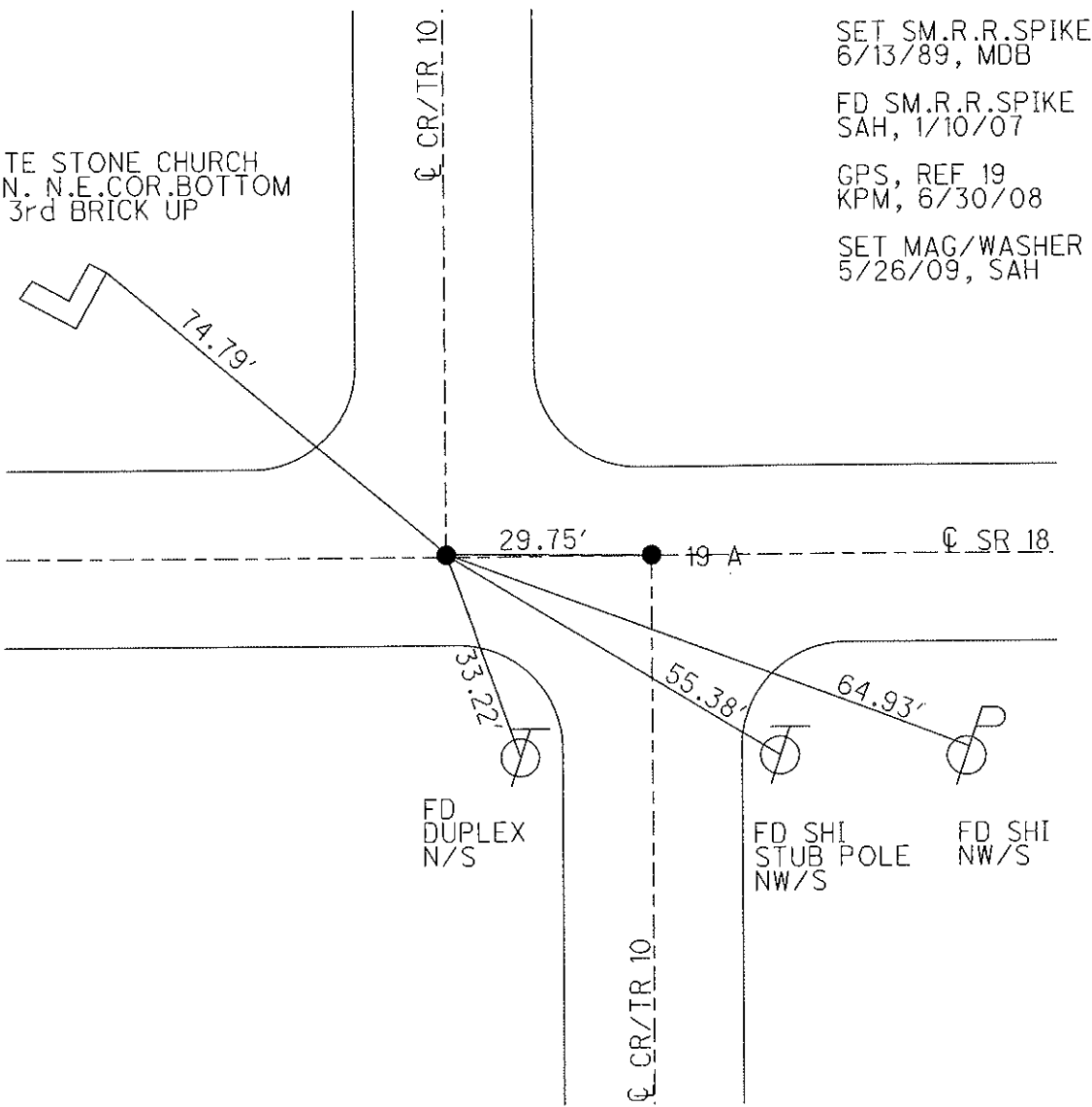
8.5' TO RT EDGE PAVEMENT

S.L.M. 472+63

Grid: Northing: 582059.462 Easting: 1540765.191



WHITE STONE CHURCH  
SIGN. N.E.COR.BOTTOM  
OF 3rd BRICK UP



SET SM.R.R.SPIKE  
6/13/89, MDB

FD SM.R.R.SPIKE  
SAH, 1/10/07

GPS, REF 19  
KPM, 6/30/08

SET MAG/WASHER  
5/26/09, SAH

# O.D.O.T. DISTRICT 2 SURVEY OFFICE

PERSONNEL

REFERENCE NO. 19

SHEET 6 OF       

NOTES BARNHISEL

H.C. " "

R.C. Loehke

DATE 4-3-89

WEATHER cloudy

TEMP. +48°

ROUTE 18

COUNTY HENRY

TOWNSHIP MARION

SECTION 3

T 3 N R 7 E

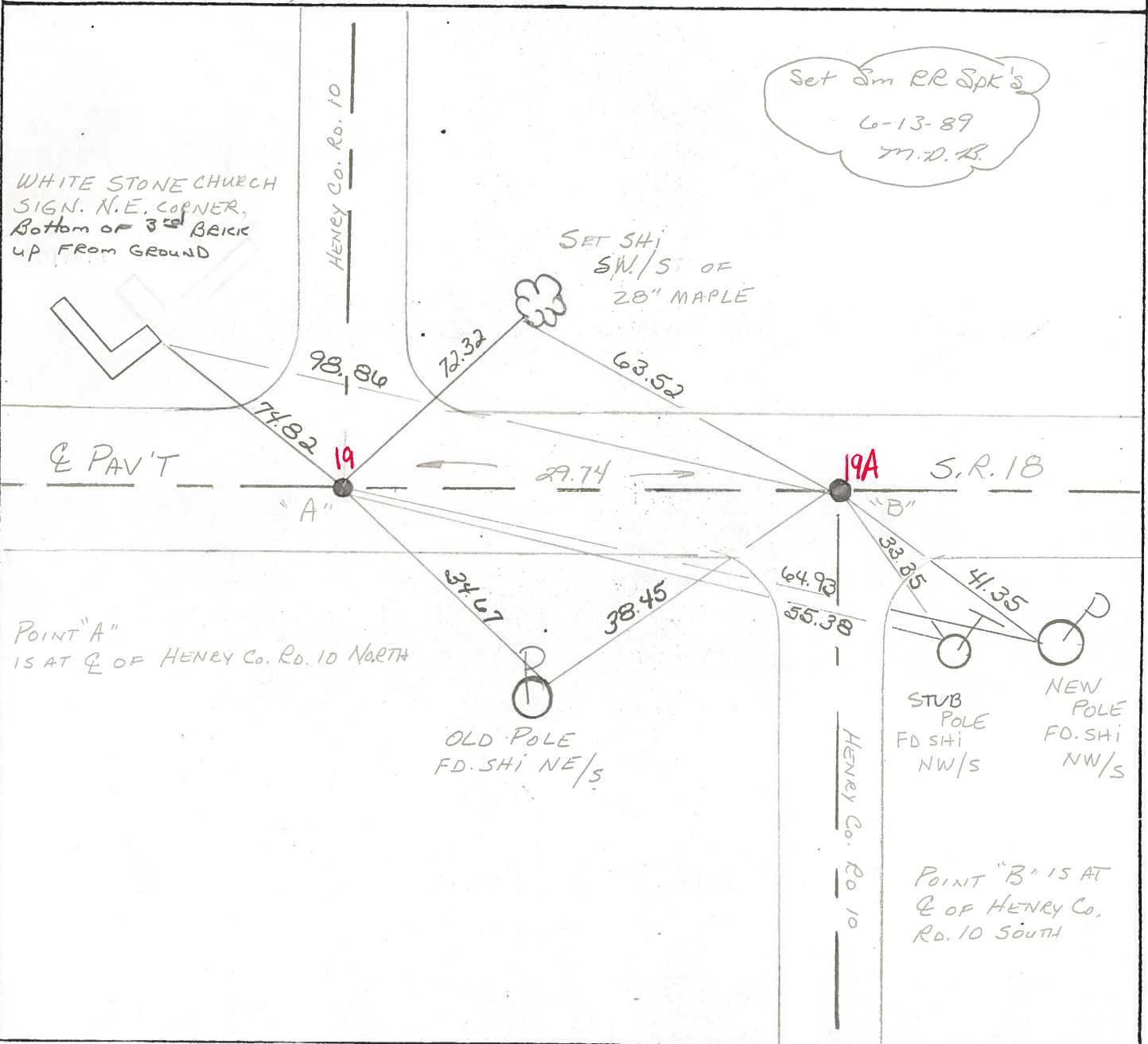
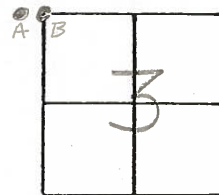
TYPE MONUMENT PK & WASHER, P.K. & WASHER

ON SURFACE - BELOW YES, YES

LEFT - & PAV'T. - RIGHT 1.0, 1.1

8.7 TO RT. EDGE PAVEMENT

S.L.M. 472+63, 472+92



County HENRY S.R. 18

Date 5-29-81 -8-20-81

Township MARION

Weather cloudy

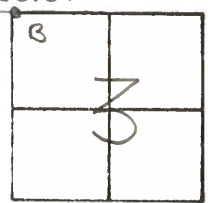
Section 3

Temp. +60°

T3N, R7E

MON ROE  
Sec. 33 Sec. 34

Personnel S. Hoffman



# 19

C. Loehrke  
L. Householder

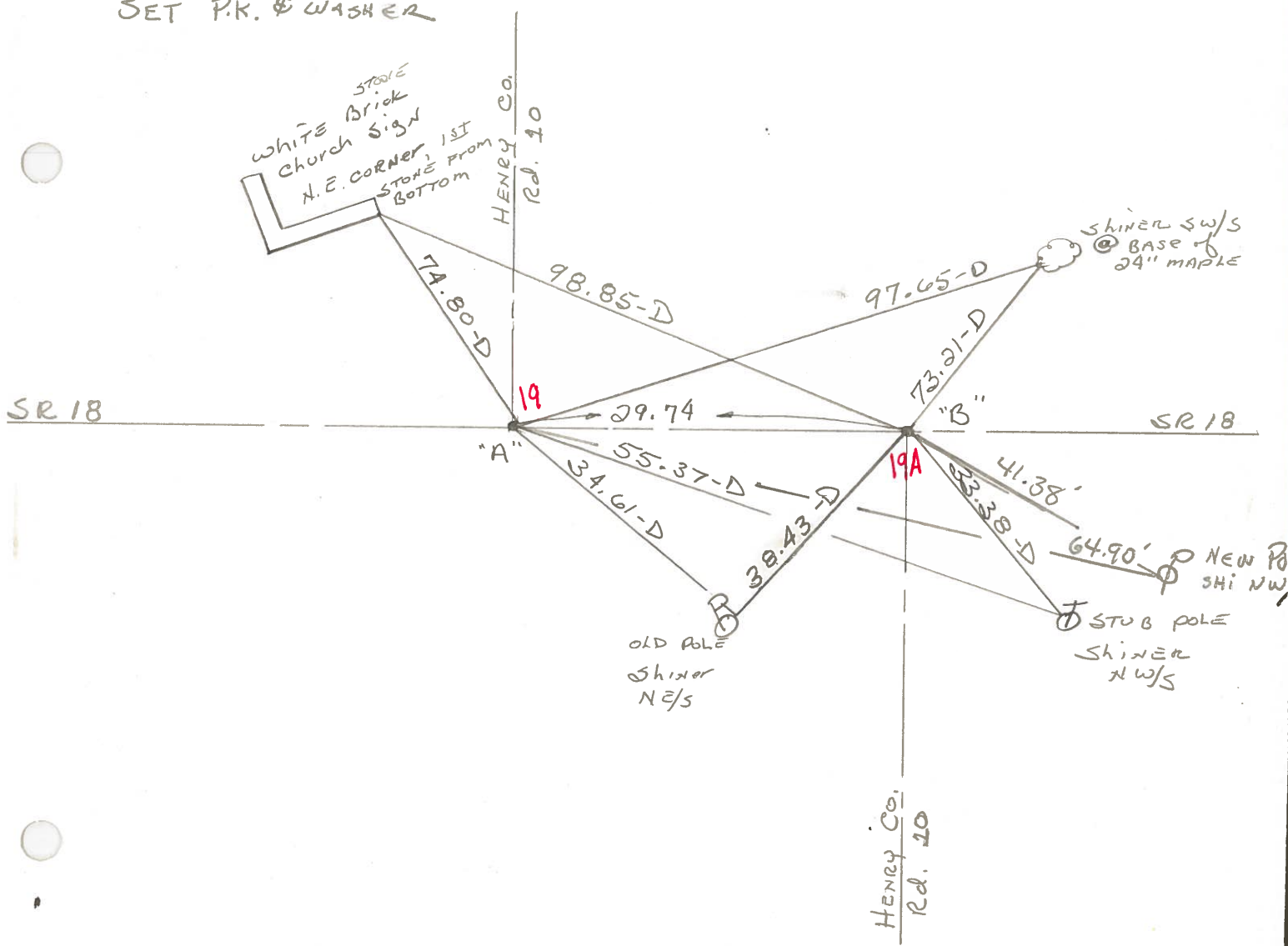
PT. "A" Fd. R.R. SPK @ SURFACE  
83' TO S. EDGE PAVT.

PROJECT STA. ± 473 + 78

PT. "B" Fd. R.R. SPK @ SURFACE  
10.3' TO N. EDGE PAVT.

PROJECT STA. ± 474 + 08

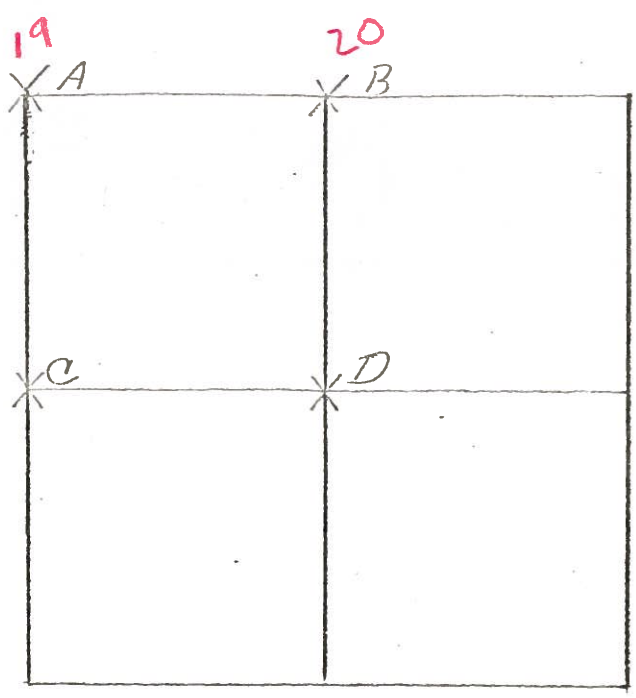
SET P.K. & WASHER



COUNTY HENRY S.R. 18  
TOWNSHIP MARION  
SECTION 3

SHEET 3 OF 7 - E  
T-3-N, R-7-E

6-15-79  
R.W., J.J., G.M.



A- FOUND P.K. ON SURFACE. DUG FOR STONE BUT DID NOT FIND. RE-ESTABLISHED CORNER 13V PLACING CENTER PUNCHED R.R. SPIKE ON THE SOUTH LINE OF SEC. 34; MONROE TWP AT THE RECORDED OFFSET OF 29.70'. P.K.'S 6' N. & E. R.R. SPIKE IS

- 3.08' EAST OF P.K. REMOVED P.K.
- 74.28' W.N.W. TO DUPLEX <sup>S</sup>/<sub>S</sub> 24" MAPLE
- 64.74' N. TO DUPLEX <sup>W</sup>/<sub>S</sub> 18" MAPLE
- 33.39' S.E. TO SHINER <sup>W</sup>/<sub>S</sub> TELEPHONE POLE 4' TALL
- 38.40' S.W. TO SHINER <sup>NE</sup>/<sub>S</sub> POWER POLE
- 29.70' W. TO S.W. CORNER SEC. 34; MONROE TWP.

6-13-79 R.W., J.J., G.M.

B- FOUND RAILROAD SPIKE OVER TOP CENTER OF STONE (8"x11"x11") 12" BELOW ROAD SURFACE. PLACED CENTER PUNCHED RAILROAD SPIKE ON SURFACE OVER TOP CENTER OF STONE. P.K.'S 6' N. & E. STONE IS 6.4' SOUTH OF NORTH EDGE OF 18' PAVEMENT.

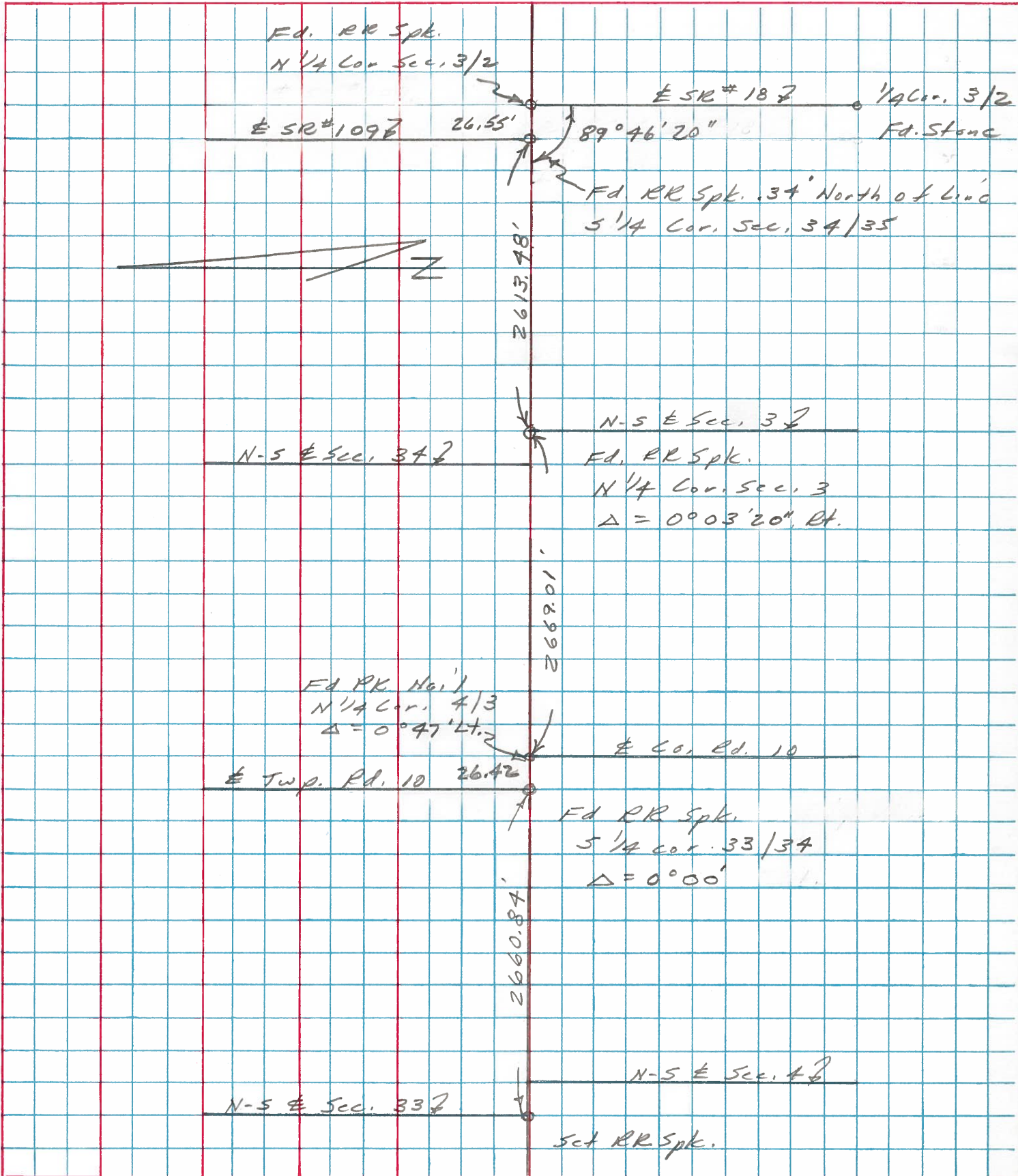
- 47.66' S.W. TO SHINER <sup>NE</sup>/<sub>S</sub> P
- 31.63' S. TO "+" ON WITNESS STONE
- 27.58' W. TO S<sup>1</sup>/<sub>4</sub> POST, SECTION 34; MONROE TWP.



PERSONNEL	TITLE	PERSONNEL	TITLE	COUNTY	Henry	DATE	9 Jan. 75
Stone				S. R.	#18	WEATHER	Cloudy
Michaelak				SEC.	Monroe-Madison Twp.	TEMP.	41°
Dunn							
Curtis							

DESCRIPTION \_\_\_\_\_ Alignment \_\_\_\_\_ JOB NO. \_\_\_\_\_

LEFT CENTER LINE RIGHT





PERSONNEL	TITLE	PERSONNEL	TITLE
W. Denno			
R. Nicholas			
D. Curtis			

COUNTY Henry DATE Oct. 3, '74

S. R. 18 WEATHER Mild

SEC. \_\_\_\_\_ TEMP. 55°

DESCRIPTION References To Control Points JOB NO. 02999(10)

