

O.D.O.T. DISTRICT 2 SURVEY OFFICE (USE ONLY)

PERSONNEL

REFERENCE NO. 19 A

SHEET 17 OF 31

NOTES NUHFER

DATE 6/26/08

ROUTE SR 18

H.C. MOSER

WEATHER

COUNTY HENRY

R.C. NUHFER

TEMP. 85°

TOWNSHIP MARION

SECTION 4

DWG BY NIESE

PID 105662

T 3 N R 7 E

TYPE MONUMENT P.K./WASHER

ON SURFACE - ~~BELOW~~ ON

OFFSET 0.8' \perp : RT

8.5' TO RT EDGE PAVEMENT

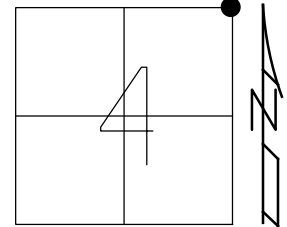
STATION: 472+93

HORIZ.DATUM: NAD83 (2011)

GEOID: NAVD88 2012A

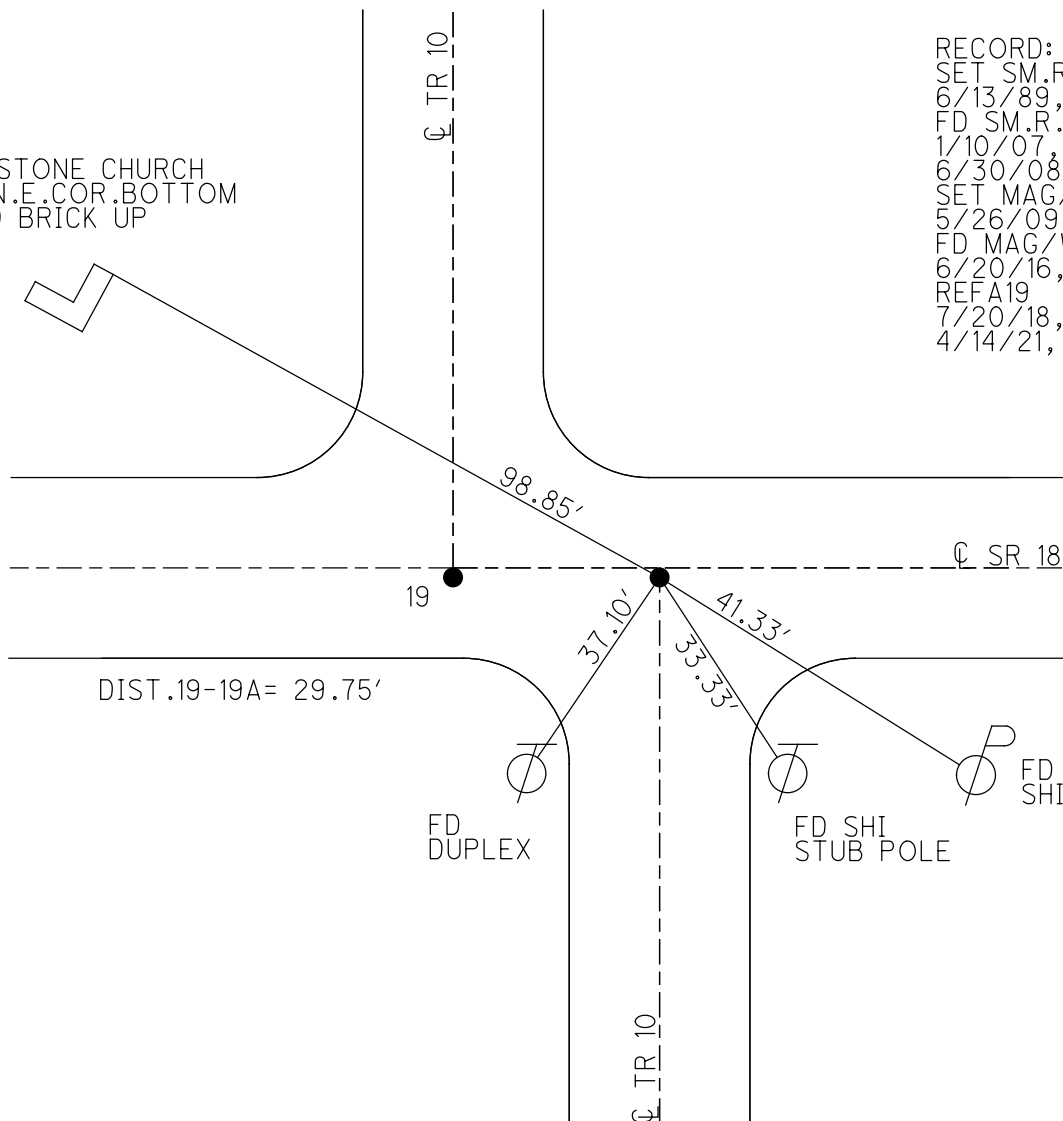
GRID: NORTHING: 582059.348

EASTING: 1540795.055



WHITE STONE CHURCH
SIGN, N.E.COR.BOTTOM
OF 3RD BRICK UP

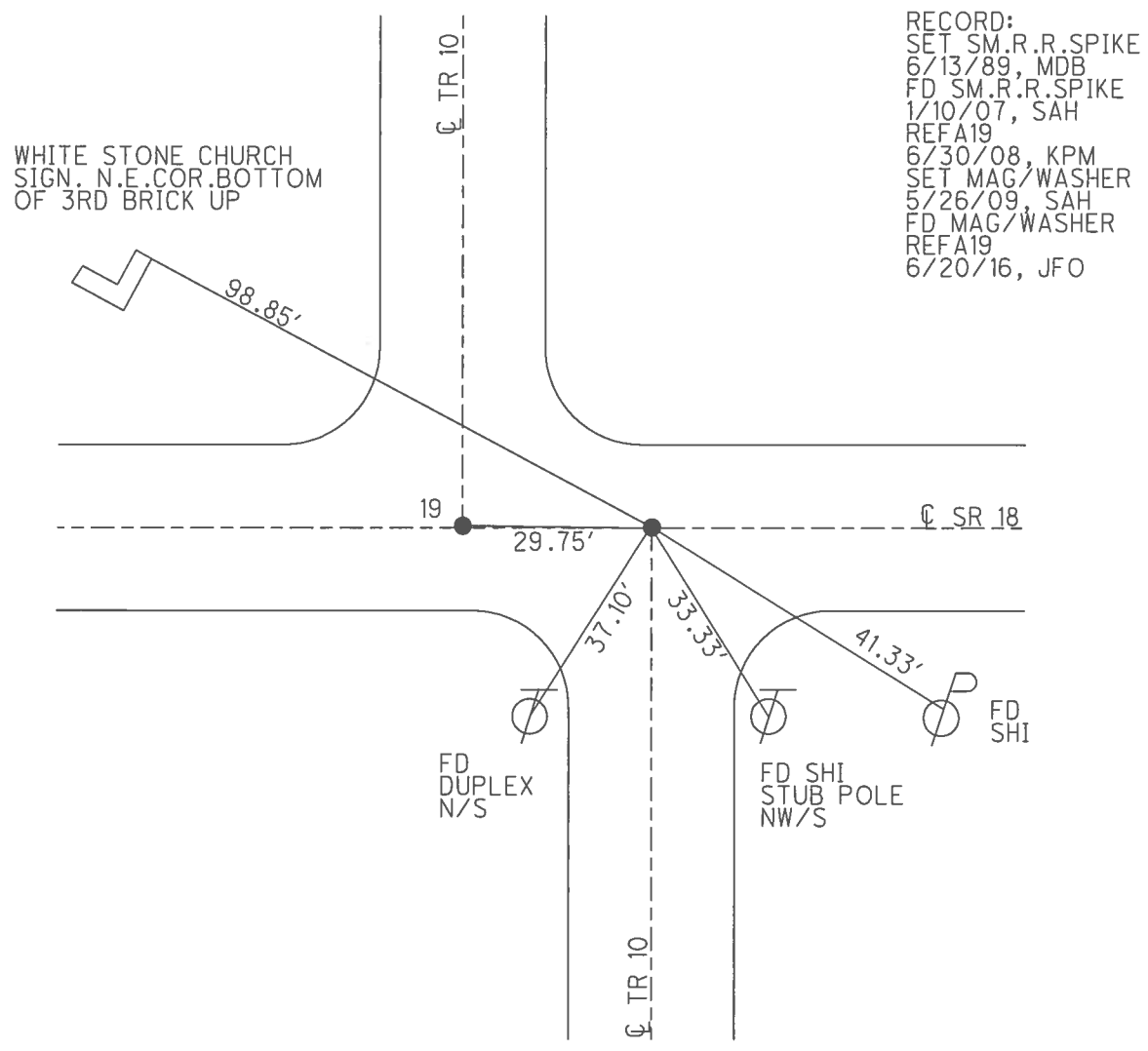
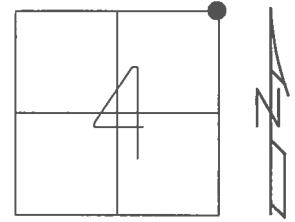
RECORD:
SET SM.R.R.SPIKE
6/13/89, MDB
FD SM.R.R.SPIKE
1/10/07, SAH
6/30/08, KPM
SET MAG/WASHER
5/26/09, SAH
FD MAG/WASHER
6/20/16, JFO
REFA19
7/20/18, JFO
4/14/21, JFO



O.D.O.T. DISTRICT 2 SURVEY OFFICE (USE ONLY)

PERSONNEL _____ REFERENCE NO. 19 A SHEET 17 OF 31
 NOTES NUHFER DATE 6/26/08 ROUTE SR 18
 H.C. MOSER WEATHER CLEAR COUNTY HENRY
 R.C. NUHFER TEMP. 85° TOWNSHIP MARION
 _____ SECTION 4
 _____ T 3 N R 7 E

TYPE MONUMENT P.K./WASHER
 ON SURFACE - ~~BELOW~~ ON _____
~~LEFT~~ - Q PAV'T - RIGHT 0.8'
8.5' TO RT EDGE PAVEMENT
 S.L.M. 472+93
 GRID: NORTHING: 582059.348 EASTING: 1540795.055



RECORD:
 SET SM.R.R.SPIKE
 6/13/89, MDB
 FD SM.R.R.SPIKE
 1/10/07, SAH
 REFA19
 6/30/08, KPM
 SET MAG/WASHER
 5/26/09, SAH
 FD MAG/WASHER
 REFA19
 6/20/16, JFO

O.D.O.T. DISTRICT 2 SURVEY OFFICE (USE ONLY)

PERSONNEL

REFERENCE NO. 19 A

SHEET 17 OF 31

NOTES NUHFER

DATE 6/26/08

ROUTE SR 18

H.C. MOSER

WEATHER CLEAR

COUNTY HENRY

R.C. NUHFER

TEMP. 85°

TOWNSHIP MARION

SECTION 3

T 3 N R 7 E

TYPE MONUMENT P.K./WASHER

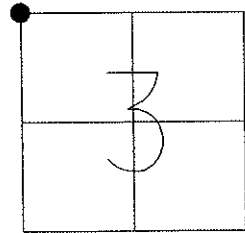
ON SURFACE - ~~BELOW~~ ON

~~LEFT~~ - Q PAV'T - RIGHT 0.8'

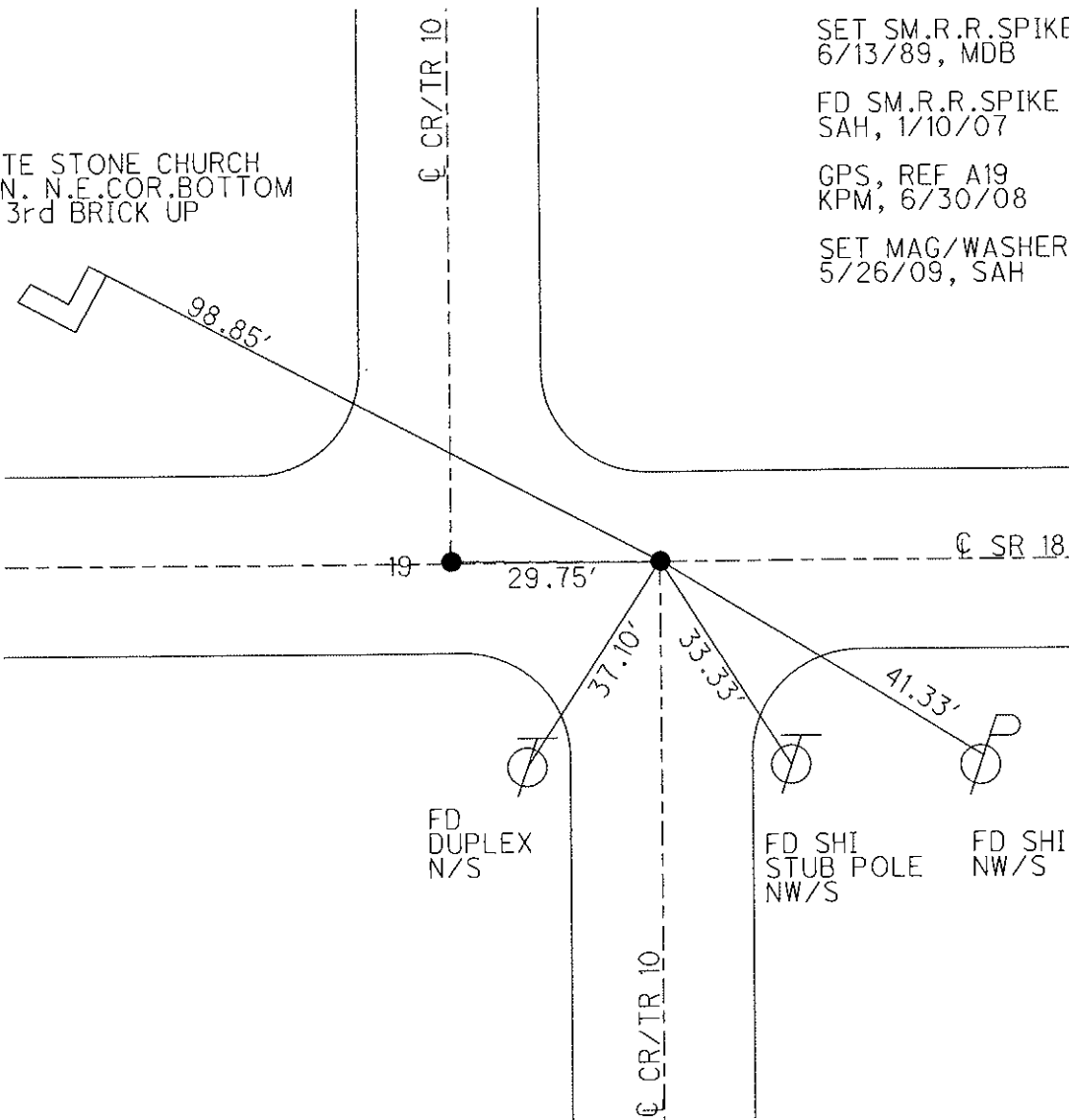
8.5' TO RT EDGE PAVEMENT

S.L.M. 472+93

Grid: Northing: 582059.264 Easting: 1540794.905



WHITE STONE CHURCH
SIGN. N.E. COR. BOTTOM
OF 3rd BRICK UP



SET SM.R.R.SPIKE
6/13/89, MDB

FD SM.R.R.SPIKE
SAH, 1/10/07

GPS, REF A19
KPM, 6/30/08

SET MAG/WASHER
5/26/09, SAH

FD
DUPLEX
N/S

FD SHI
STUB POLE
NW/S

FD SHI
NW/S

O.D.O.T. DISTRICT 2 SURVEY OFFICE

PERSONNEL

REFERENCE NO. 19

SHEET 6 OF

NOTES BARNHISEL

H.C. " "

R.G. Loehrke

DATE 4-3-89

WEATHER cloudy

TEMP. +48°

ROUTE 18

COUNTY HENRY

TOWNSHIP MARION

SECTION 3

T 3 N R 7 E

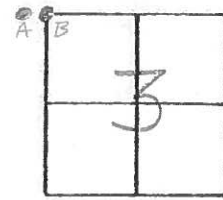
TYPE MONUMENT PK & WASHER, P.K. + WASHER

ON SURFACE - BELOW YES, YES

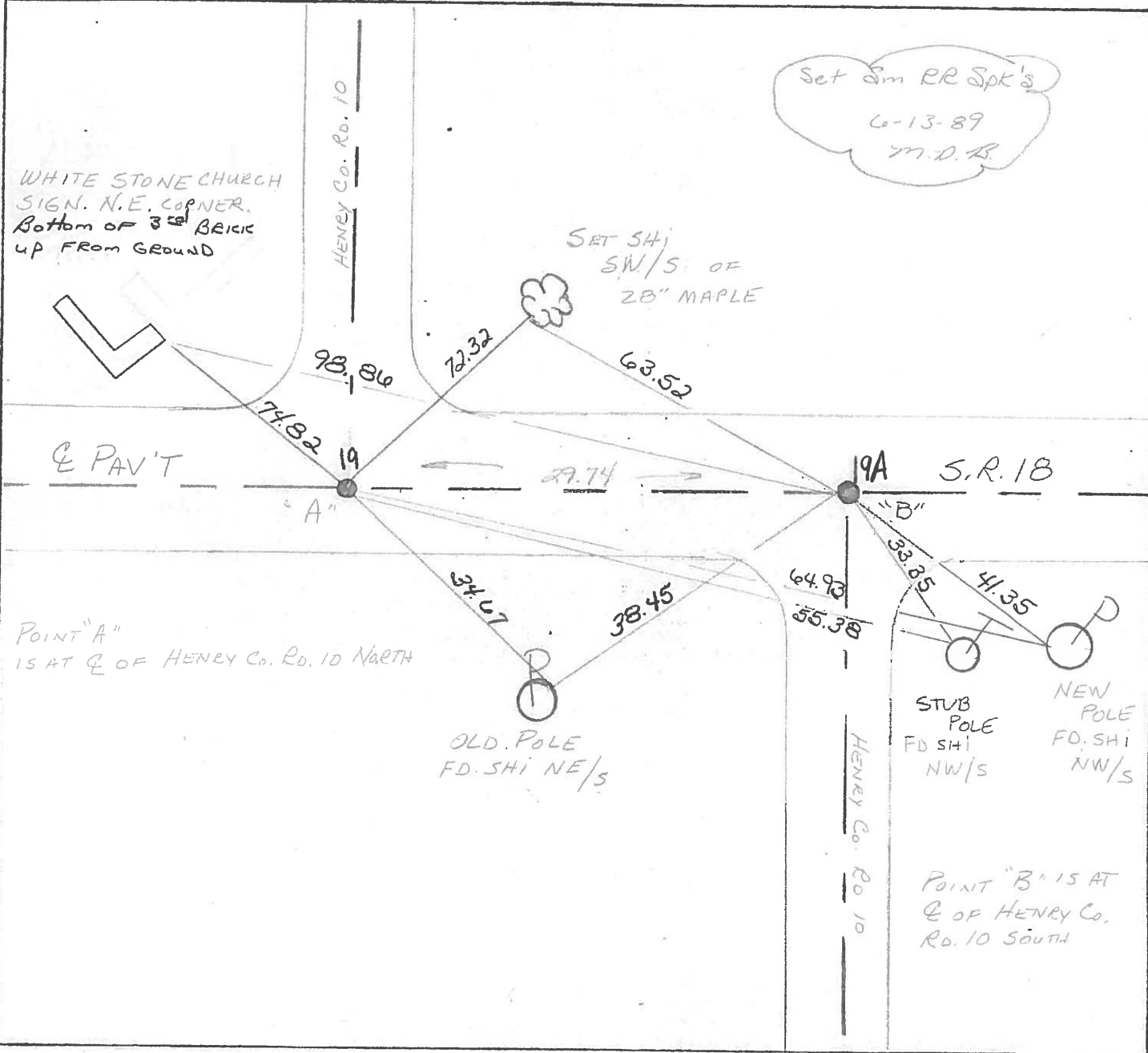
LEFT - Q PAV'T. - RIGHT 1.0, 1.1

B.T TO RT. EDGE PAVEMENT

S.L.M. 472+63, 472+92



Set Sim RR Spk's
6-13-89
M.D.R.



WHITE STONE CHURCH
SIGN. N.E. CORNER.
Bottom of 3rd BRICK
UP FROM GROUND

HENRY Co. Rd. 10

SET SHI
SW/S OF
20" MAPLE

Q PAV'T

POINT "A"
IS AT Q OF HENRY Co. Rd. 10 NORTH

OLD. POLE
FD. SHI NE/S

STUB
POLE
FD. SHI
NW/S

NEW
POLE
FD. SHI
NW/S

POINT "B" IS AT
Q OF HENRY Co.
Rd. 10 SOUTH

HENRY Co. Rd. 10

County HENRY S.R. 18

Date 5-29-81 - 8-20-81

Township MARION

Weather cloudy

Section 3

Temp. +60°

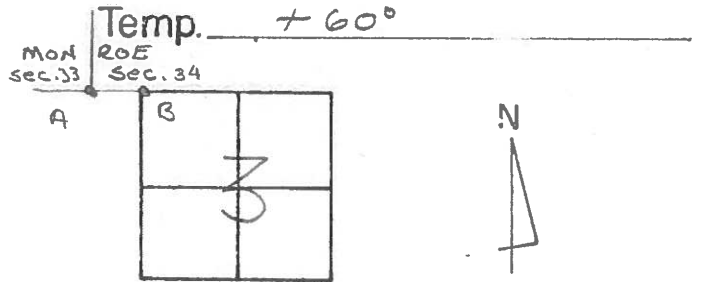
T3N, R7E

Personnel S. Hoffman

C. Loehrke

L. Householder

19



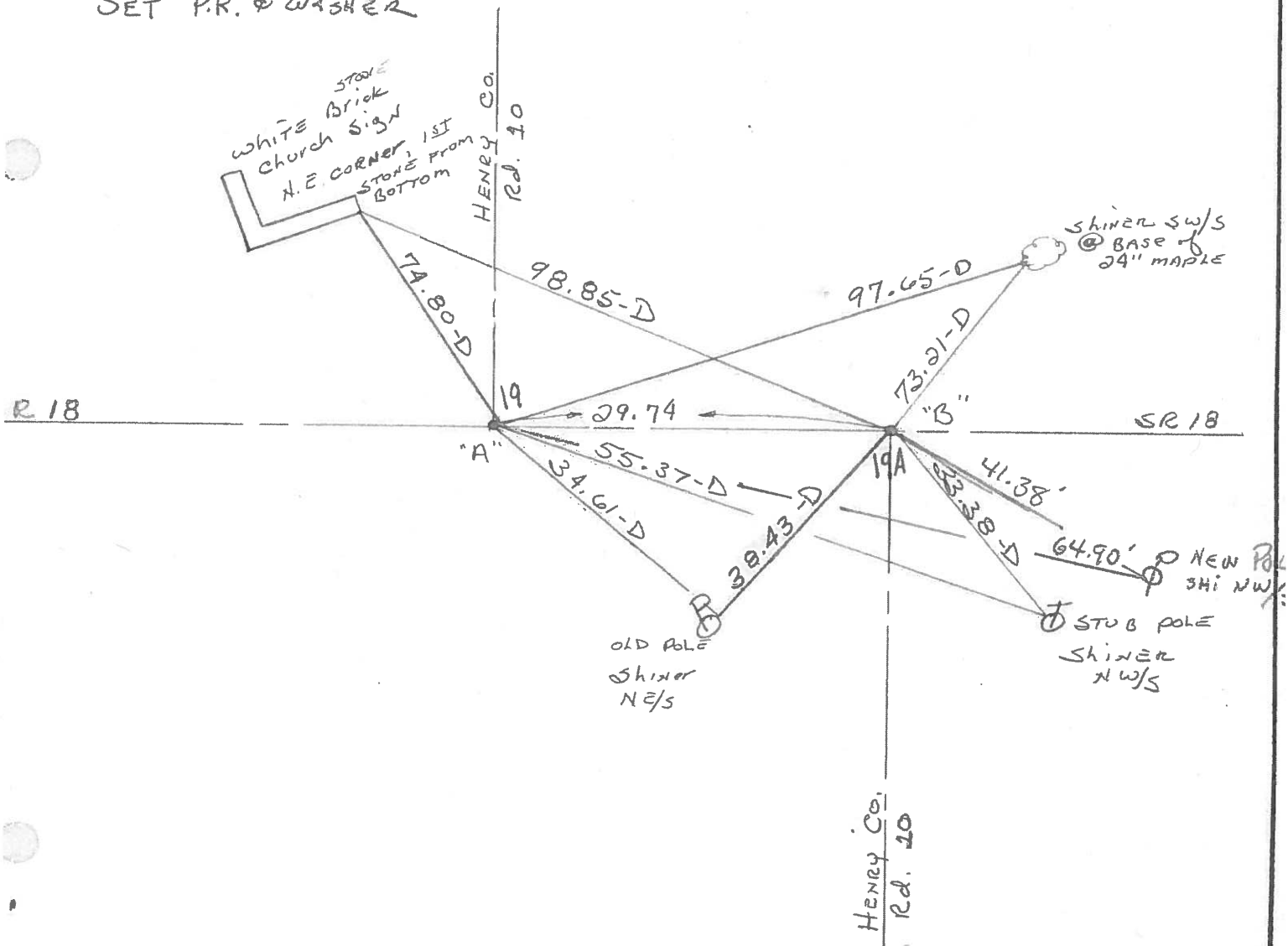
P.T. "A" Fd. R.R. SPK @ SURFACE
83' TO S. EDGE PAVT.

PROJECT STA. ± 473 + 78

P.T. "B" Fd. R.R. SPK @ SURFACE
10.3' TO N. EDGE PAVT.

PROJECT STA. ± 474 + 08

SET P.K. & WASHER



PERSONNEL	TITLE	PERSONNEL	TITLE	COUNTY	DATE	S. R.	WEATHER	TEMP.
Stone				Henry	9 Jan. 75	#18	Cloudy	41°
Michalak								
Dunn								
Curtis								

DESCRIPTION _____ *Alignment* _____ JOB NO. _____

LEFT CENTER LINE RIGHT

