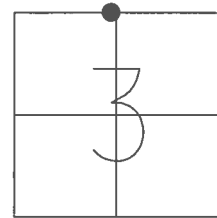


O.D.O.T. DISTRICT 2 SURVEY OFFICE (USE ONLY)

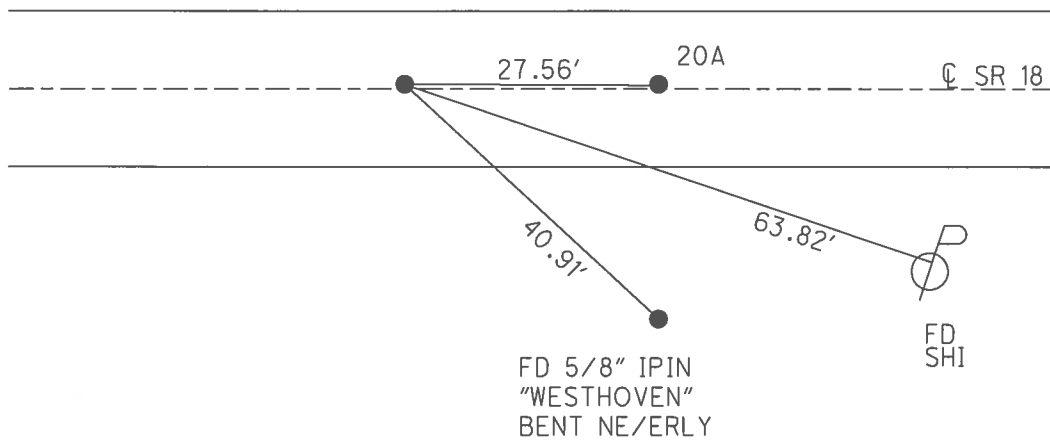
PERSONNEL _____ REFERENCE NO. 20 SHEET 18 OF 31
 NOTES NUHFER DATE 6/26/08 ROUTE SR 18
 H.C. MOSER WEATHER SUNNY COUNTY HENRY
 R.C. NUHFER TEMP. 85° TOWNSHIP MARION
 _____ SECTION 3
 _____ T 3 N R 7 E

TYPE MONUMENT P.K./WASHER
 ON SURFACE - ~~BELOW~~ ON _____
 LEFT - ☉ PAV'T - ~~RIGHT~~ 3.3'
5.9' TO LT EDGE PAVEMENT
 S.L.M. 499+06
 GRID: NORTHING: 582045.250 EASTING: 1543406.199



NOTE: MONROE TWP
 SEC 34 S 1/4 POST

RECORD:
 SET SM.R.R.SPIKE
 6/13/89, MDB
 FD SM.R.R.SPIKE
 1/10/07, SAH
 REFA20
 6/30/08, KPM
 SET MAG/WASHER
 5/26/09, SAH
 FD MAG/WASHER
 REFA20
 6/20/16, JFO



O.D.O.T. DISTRICT 2 SURVEY OFFICE (USE ONLY)

PERSONNEL _____

REFERENCE NO. 20

SHEET 18 OF 31

NOTES NUHFER

DATE 6/26/08

ROUTE SR 18

H.C. MOSER

WEATHER SUNNY

COUNTY HENRY

R.C. NUHFER

TEMP. 85°

TOWNSHIP MARION

SECTION 3

T 3 N R 7 E

TYPE MONUMENT P.K./WASHER

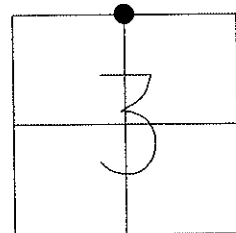
ON SURFACE - ~~BELOW~~ ON

LEFT - Q PAV'T - ~~RIGHT~~ 3.3'

5.9' TO LT EDGE PAVEMENT

S.L.M. 499+06

Grid: Northing: 582045.172 Easting: 1543406.117

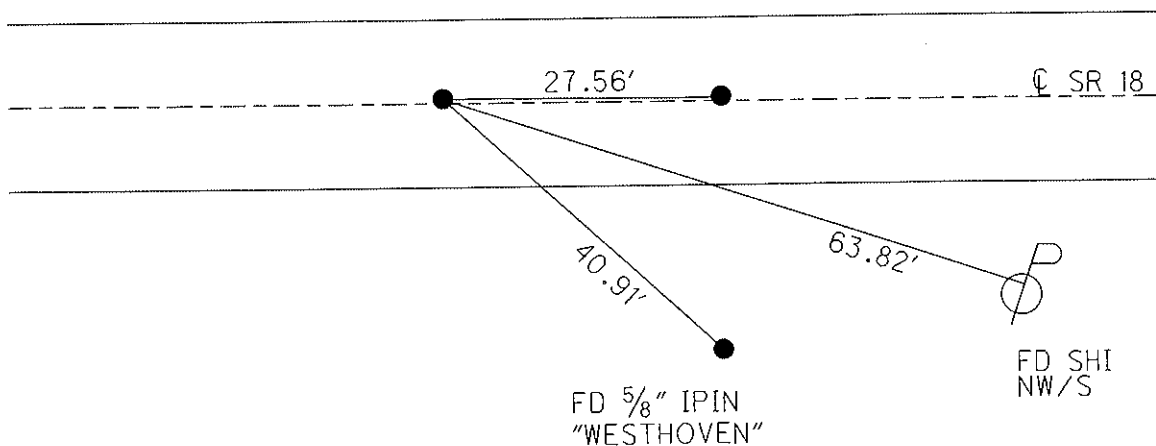


SET SM.R.R.SPIKE
6/13/89, MDB

FD SM.R.R.SPIKE
SAH, 1/10/07

GPS, REF 20
KPM, 6/30/08

SET MAG/WASHER
5/26/09, SAH



O.D.O.T. DISTRICT 2 SURVEY OFFICE

PERSONNEL _____

REFERENCE NO. 20

SHEET 7 OF _____

NOTES BARNHISEL

H.C. _____

DATE 4-3-89

ROUTE 18

R.C. Locheke

WEATHER cloudy

COUNTY HENRY

TEMP. +48°

TOWNSHIP MARION

SECTION 3

T 3 N R 7 E

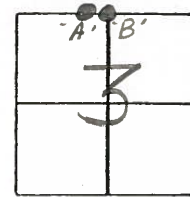
TYPE MONUMENT PREWASHER, P.K. & WASHER

ON SURFACE - BELOW YES, YES

LEFT- & PAV'T. - RIGHT 3.3, 3.3

5.9 TO LT. EDGE PAVEMENT

S.L.M. 499+06, 499+64



Set Sm RR Spk
6-13-89
m.D.B.

℄ PAV'T

"A"

27.56

"B"

S.R. 18

20

20A

42.98 - "R"

31.63 - "R"

41.77
63.76

NEW POLE
FD. SHI NW/S

NOTE: 4-3-89
STONE WASN'T
USABLE

FD. "+"

ON TOP OF STONE

County HENRY S.R. 18

Date 5-29-81

Township MARION

Weather cloudy

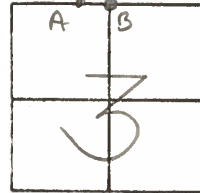
Section 3

Temp. +60°

T3N, R7E

MONROE SEC 34

Personnel S. Hoffmann



20
C. Loehrke
L. Householder

P.T. "A" Ed. R.R. spike @ surface
 6' TO N. EDGE PAVT
 12.3' TO S. EDGE PAVT

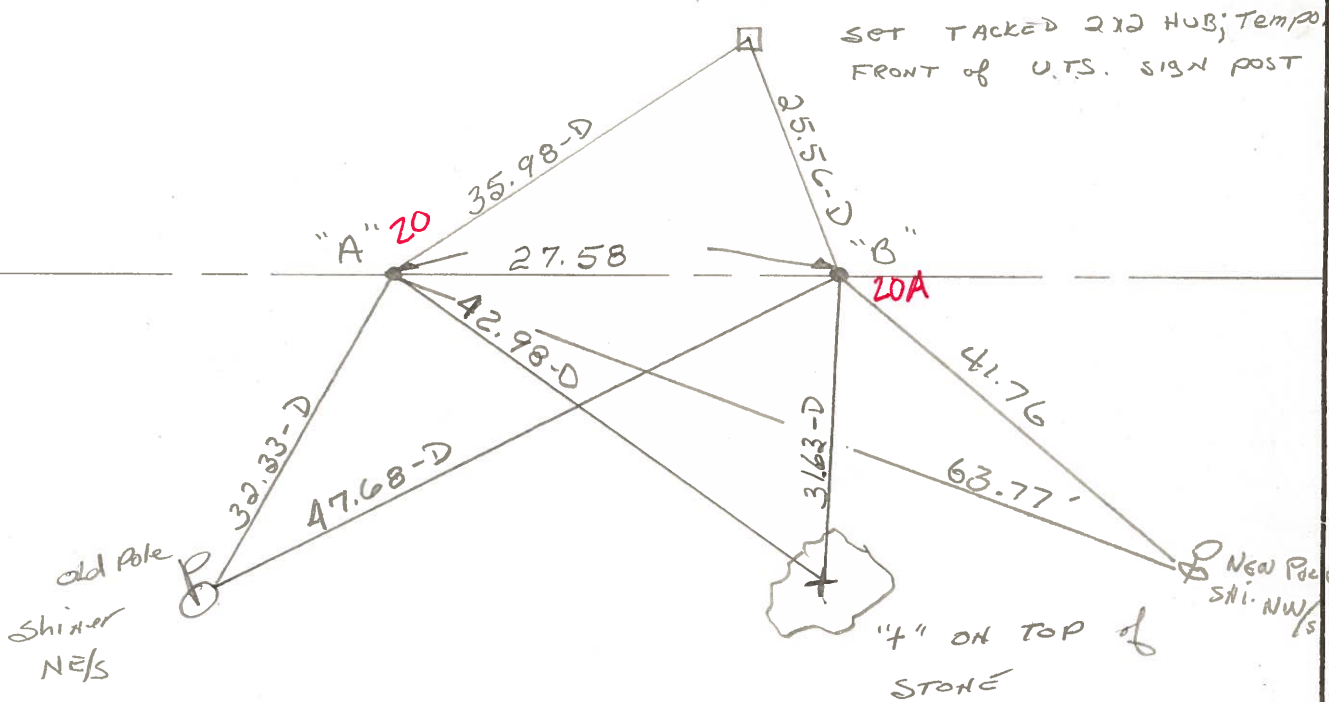
PROJECT STA. ± 500+20

P.T. "B" Ed. R.R. spike @ surface
 6.4' TO N. EDGE PAVT
 11.9' TO S. EDGE PAVT

PROJECT STA. ± 500+48

SET PK & WASHER
 AT "A" - "B"

S. R. 18



COUNTY HENRY S.R. 10

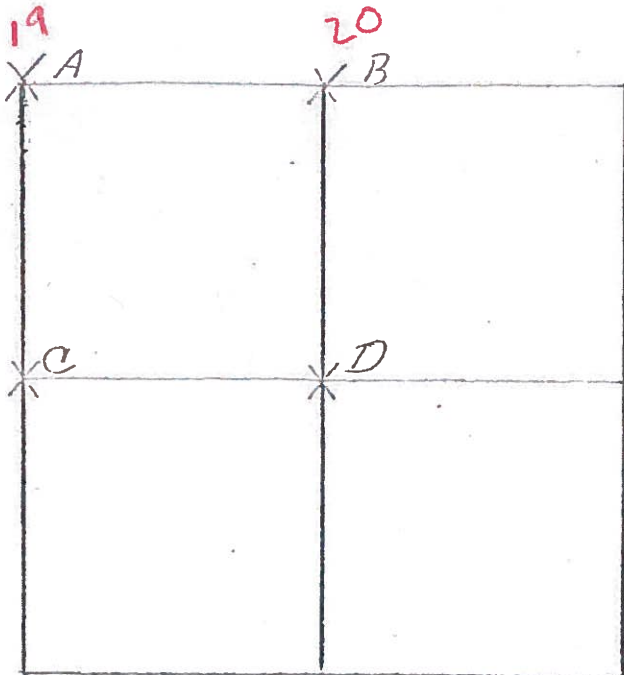
1-3-N, R-1-E

TOWNSHIP MARION

SECTION 3

6-15-79

R.W. J.J., G.M.



A- FOUND P.K. ON SURFACE. DUG FOR STONE BUT DID NOT FIND. RE-ESTABLISHED CORNER BY PLACING CENTER PUNCHED R.R. SPIRE ON THE SOUTH LINE OF SEC. 34; MONROE TWP AT THE RECORDED OFFSET OF 29.70'. P.K.'S 6' N. & E. R.R. SPIRE IS

3.08' EAST OF P.K. REMOVED P.K.
74.28' W.N.W. TO DUPLEX ^S/₅ 24" MAPLE
64.74' N. TO DUPLEX ^W/₅ 18" MAPLE
33.39' S.E. TO SHINER ^W/₅ TELEPHONE POLE 4' TALL
38.40' S.W. TO SHINER ^{NE}/₅ POWER POLE
29.70' W. TO S.W. CORNER SEC. 34; MONROE TWP.

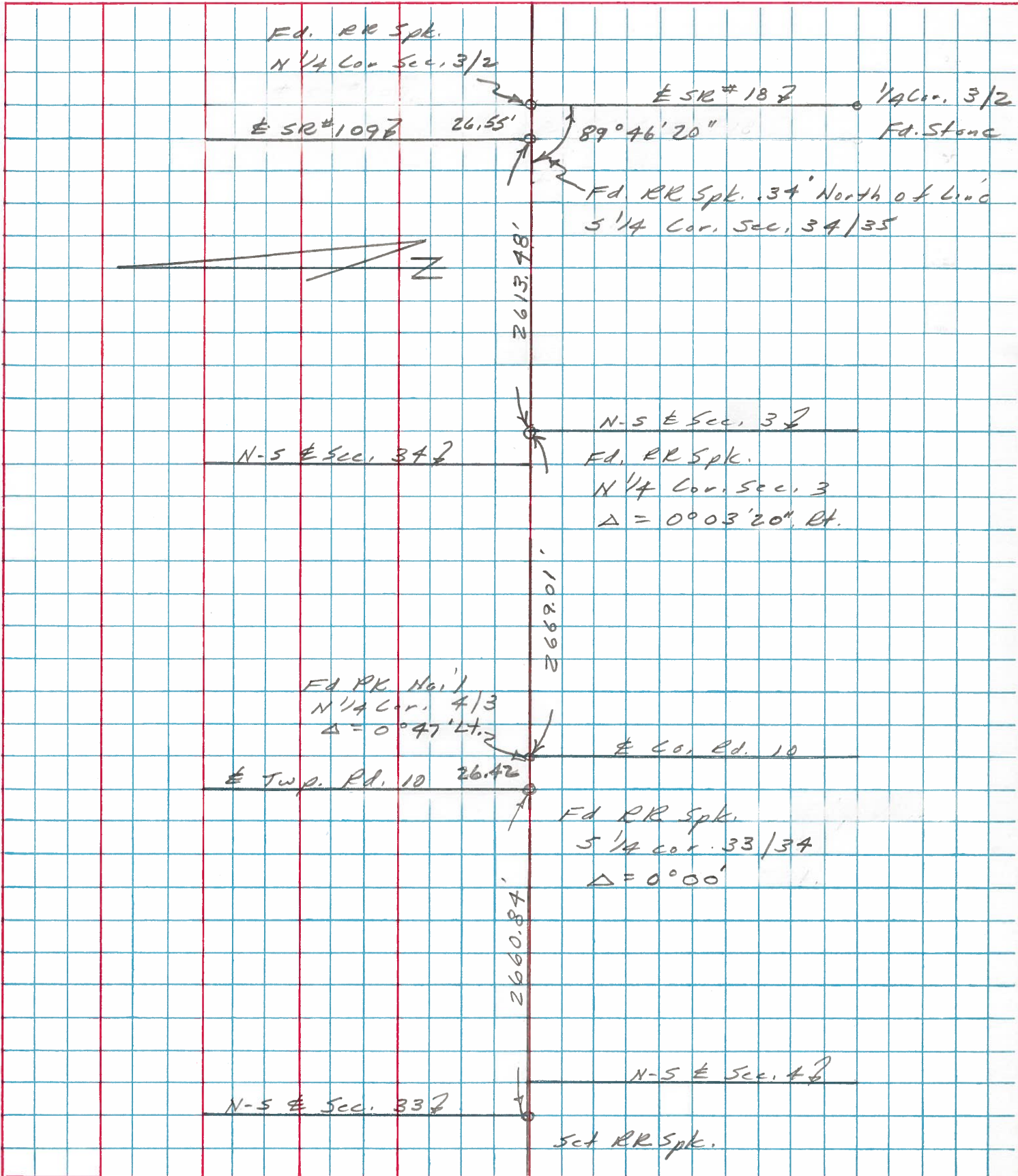
6-13-79 R.W. J.J., G.M.

B- FOUND RAILROAD SPIRE OVER TOP CENTER OF STONE (8" x 11" x 11") 12" BELOW ROAD SURFACE. PLACED CENTER PUNCHED RAILROAD SPIRE ON SURFACE OVER TOP CENTER OF STONE. P.K.'S 6' N. & E. STONE IS 6.4' SOUTH OF NORTH EDGE OF 18' PAVEMENT.
47.66' S.W. TO SHINER ^{NE}/₅ P
31.63' S. TO "+" ON WITNESS STONE
27.58' W. TO S ¹/₄ POST, SECTION 34; MONROE TWP.

PERSONNEL	TITLE	PERSONNEL	TITLE	COUNTY	DATE
Stone				Henry	9 Jan. 75
Michalak				S. R. #18	WEATHER Cloudy
Dunn				SEC. Monroec-Madison Twp.	TEMP. 41°
Curtis					

DESCRIPTION _____ Alignment _____ JOB NO. _____

LEFT CENTER LINE RIGHT



PERSONNEL TITLE PERSONNEL TITLE
W. Denno _____
R. Michalak _____
D. Curtis _____

COUNTY Henry DATE Oct. 3, '74

S. R. 18 WEATHER Mild

SEC. _____ TEMP. 55°

DESCRIPTION References To Control Points JOB NO. 02999 (0)

