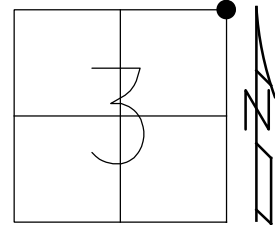


O.D.O.T. DISTRICT 2 SURVEY OFFICE (USE ONLY)

PERSONNEL _____ REFERENCE NO. 21 SHEET 21 OF 31
 NOTES NIESE DATE 3/12/21 ROUTE SR 18
 H.C. RHOADES WEATHER SUNNY COUNTY HENRY
 R.C. _____ TEMP. 50° TOWNSHIP MARION
 DWG BY NIESE PID PAVE TRAIN SECTION 3
 T 3 N R 7 E

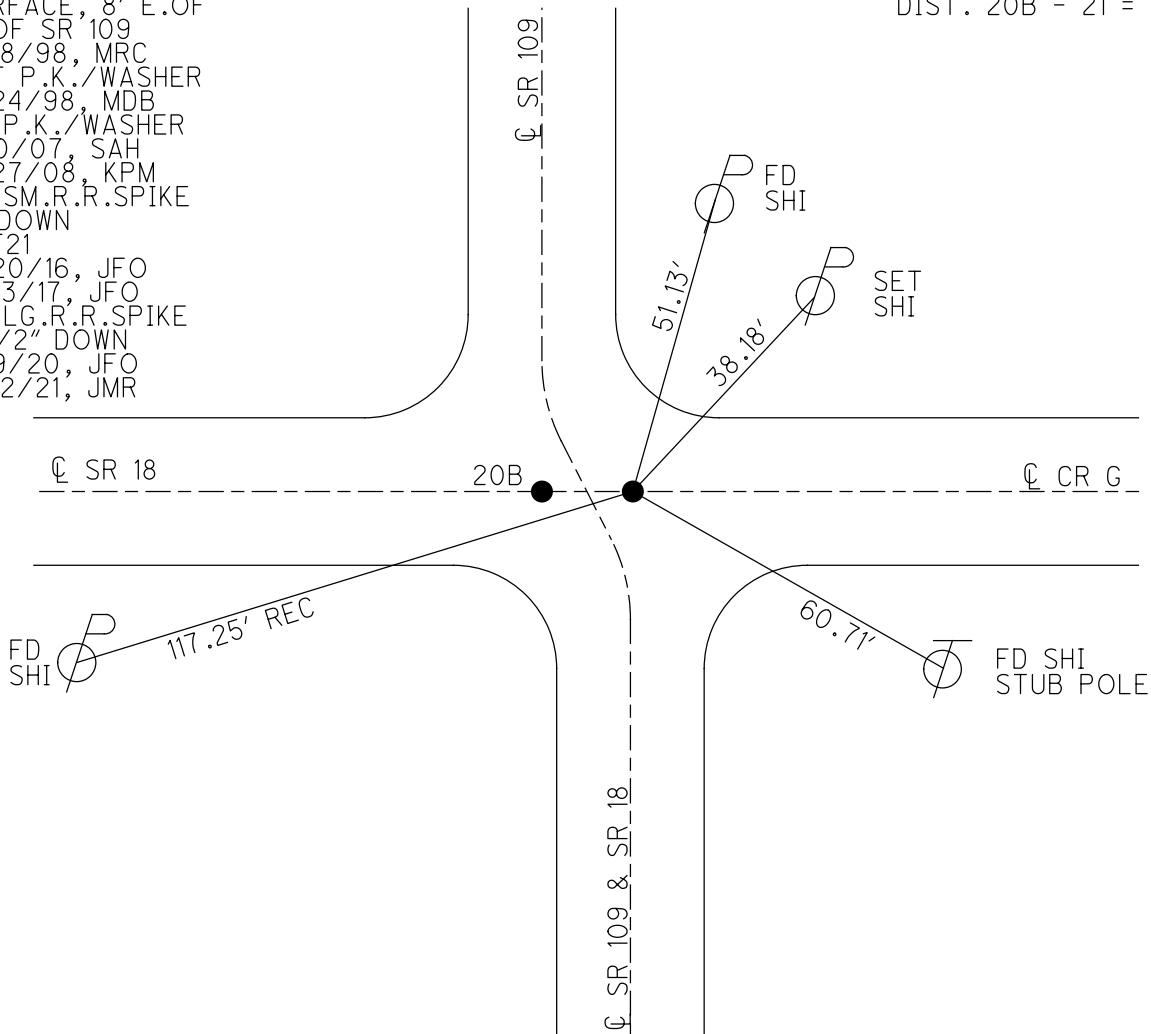
TYPE MONUMENT LG.R.R.SPIKE
~~ON SURFACE~~ - BELOW 2 1/2"
 OFFSET \varnothing PAVEMENT 6.5' \pm : RT
 - TO - EDGE PAVEMENT
 STATION: 525+69



HORZ.DATUM: NAD83(2011) GEOID: NAVD88 2012A
 GRID: NORTHING: 582030.833 EASTING: 1546073.032

RECORD:
 FD SM.R.R.SPIKE AT
 SURFACE, 8' E.OF
 \varnothing OF SR 109
 5/18/98, MRC
 SET P.K./WASHER
 9/24/98, MDB
 FD P.K./WASHER
 1/10/07, SAH
 6/27/08, KPM
 FD SM.R.R.SPIKE
 2" DOWN
 REF21
 6/20/16, JFO
 11/13/17, JFO
 FD LG.R.R.SPIKE
 2 1/2" DOWN
 6/9/20, JFO
 3/12/21, JMR

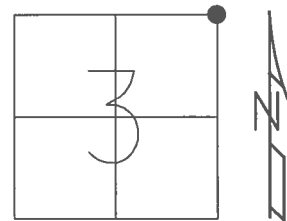
NOTE: REF 14A SR 109
 DIST. 20B - 21 = 26.65'



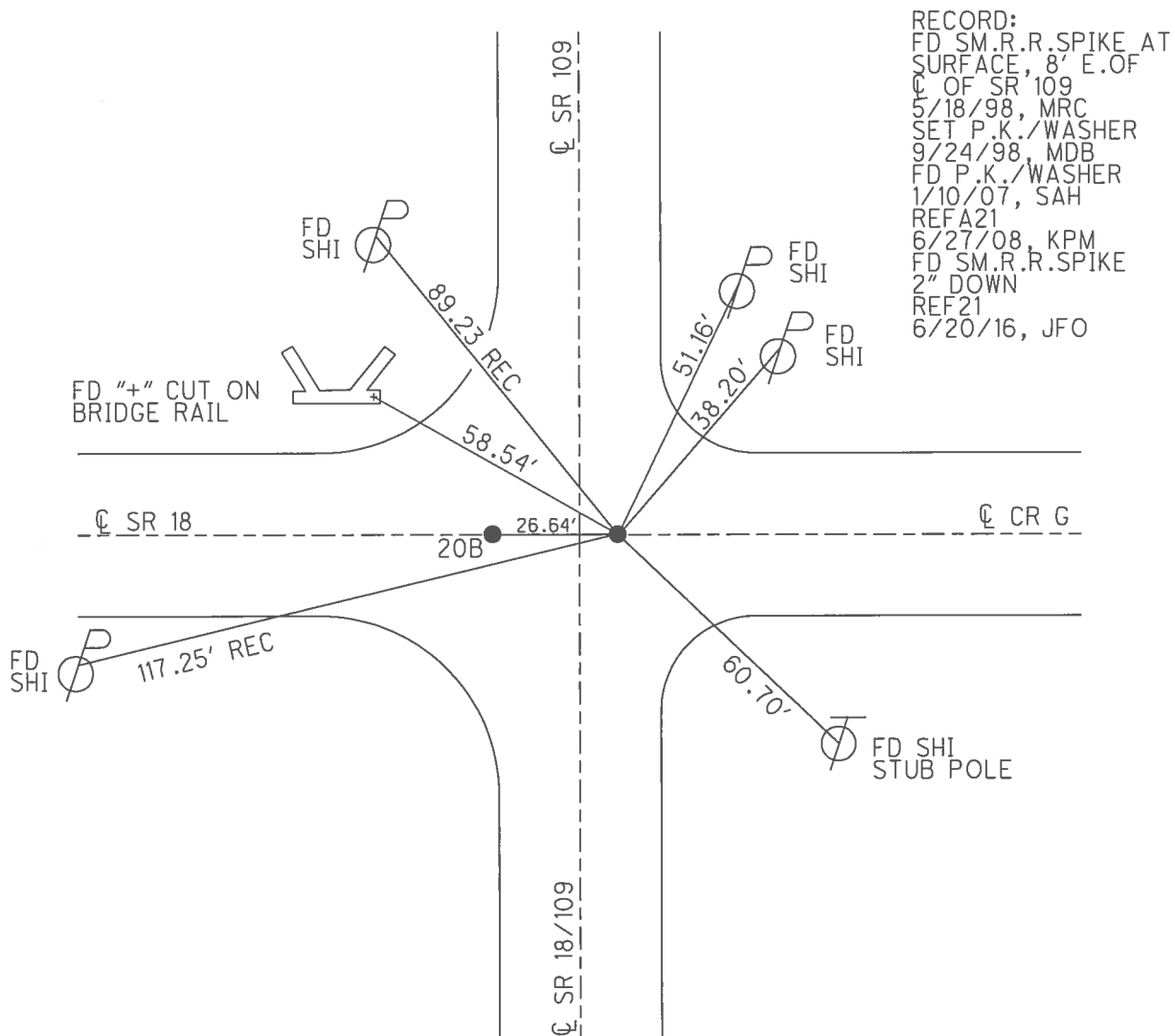
O.D.O.T. DISTRICT 2 SURVEY OFFICE (USE ONLY)

PERSONNEL _____ REFERENCE NO. 21 SHEET 21 OF 31
 NOTES NUHFER DATE 6/26/08 ROUTE SR 18
 H.C. MOSER WEATHER SUNNY COUNTY HENRY
 R.C. NUHFER TEMP. 85° TOWNSHIP MARION
 _____ SECTION 3
 _____ T 3 N R 7 E

TYPE MONUMENT R.R.SPIKE
~~ON SURFACE~~ - BELOW 2"
~~LEFT~~ - CL PAV'T - RIGHT 2', 6.5' RT CL SR 109
- TO - EDGE PAVEMENT
 S.L.M. 525+69



GRID: NORTHING: 582030.821 EASTING: 1546073.082

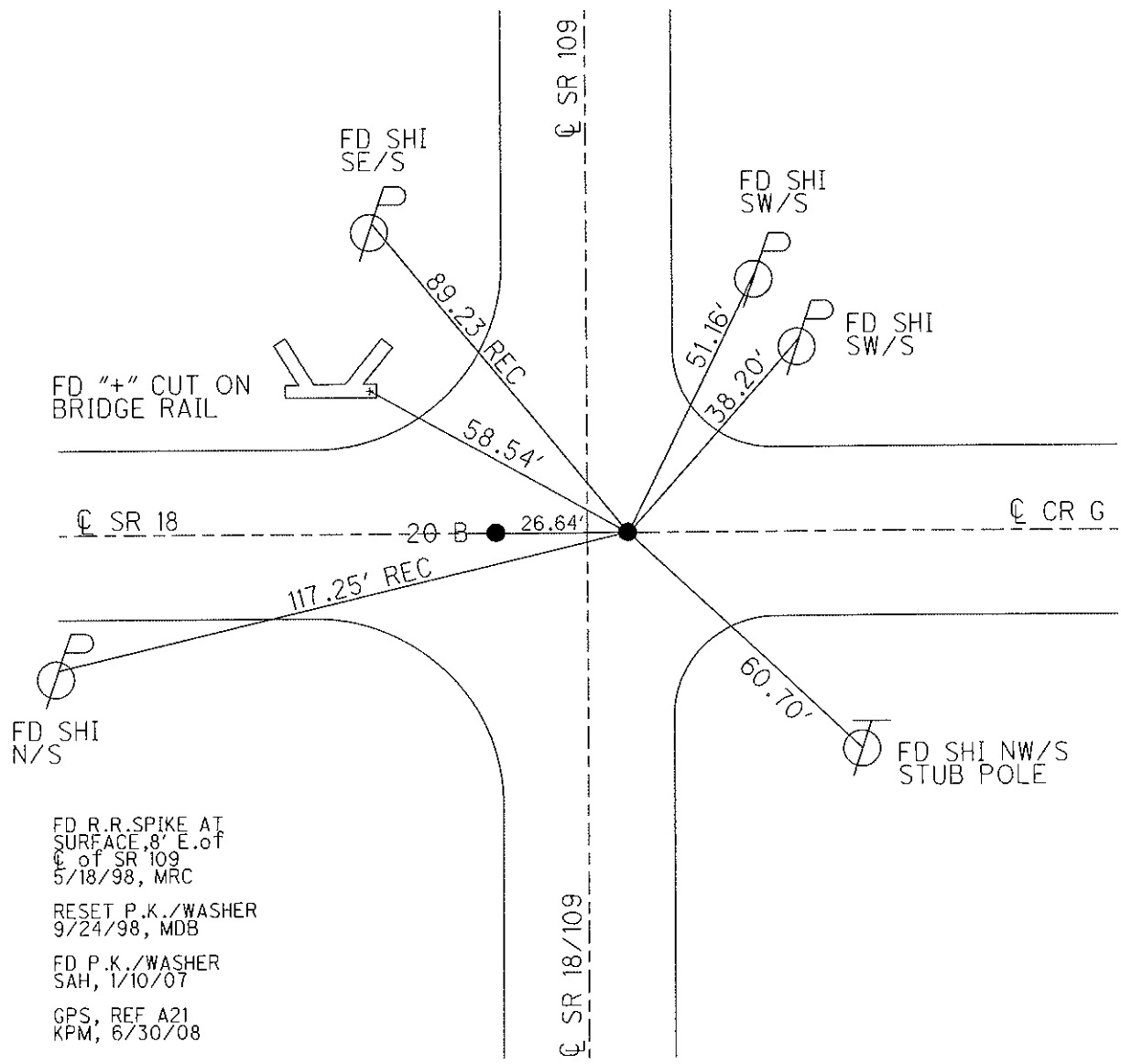
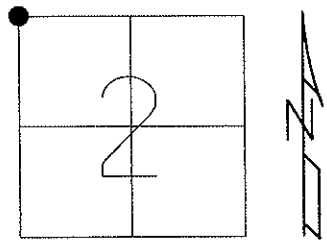


RECORD:
 FD SM.R.R.SPIKE AT
 SURFACE, 8' E.OF
 CL OF SR 109
 5/18/98, MRC
 SET P.K./WASHER
 9/24/98, MDB
 FD P.K./WASHER
 1/10/07, SAH
 REFA21
 6/27/08, KPM
 FD SM.R.R.SPIKE
 2" DOWN
 REF21
 6/20/16, JFO

O.D.O.T. DISTRICT 2 SURVEY OFFICE (USE ONLY)

PERSONNEL	REFERENCE NO. <u>21</u>	SHEET <u>21</u> OF <u>31</u>
NOTES <u>NUHFER</u>	DATE <u>6/26/08</u>	ROUTE <u>SR 18</u>
H.C. <u>MOSER</u>	WEATHER <u>SUNNY</u>	COUNTY <u>HENRY</u>
R.C. <u>NUHFER</u>	TEMP. <u>85°</u>	TOWNSHIP <u>MARION</u>
		SECTION <u>2</u>
		T <u>3</u> N R <u>7</u> E

TYPE MONUMENT R.R.SPIKE
~~ON SURFACE~~ - BELOW 2"
~~LEFT~~ - ℄ PAV'T - RIGHT 6.5' ℄ SR 109
TO EDGE PAVEMENT
 S.L.M. 525+69
 Grid: Northing: 582030.755 Easting: 1546072.960



FD R.R.SPIKE AT SURFACE, 8" E. of ℄ of SR 109, 5/18/98, MRC
 RESET P.K./WASHER 9/24/98, MDB
 FD P.K./WASHER SAH, 1/10/07
 GPS, REF A21 KPM, 6/30/08

O.D.O.T. DISTRICT 2 SURVEY OFFICE

PERSONNEL _____

REFERENCE NO. 21

SHEET 8 OF _____

NOTES CANTERBURY

H.C. Rousos

R.C. Huss

DATE 5-18-98

WEATHER FAIR

TEMP. +80° F

ROUTE 18

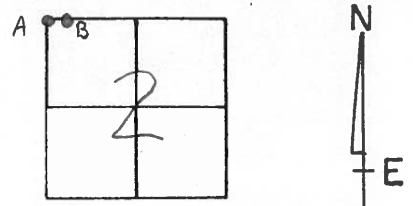
COUNTY HENRY

TOWNSHIP MARION

SECTION 2

T 3 N R 7 E

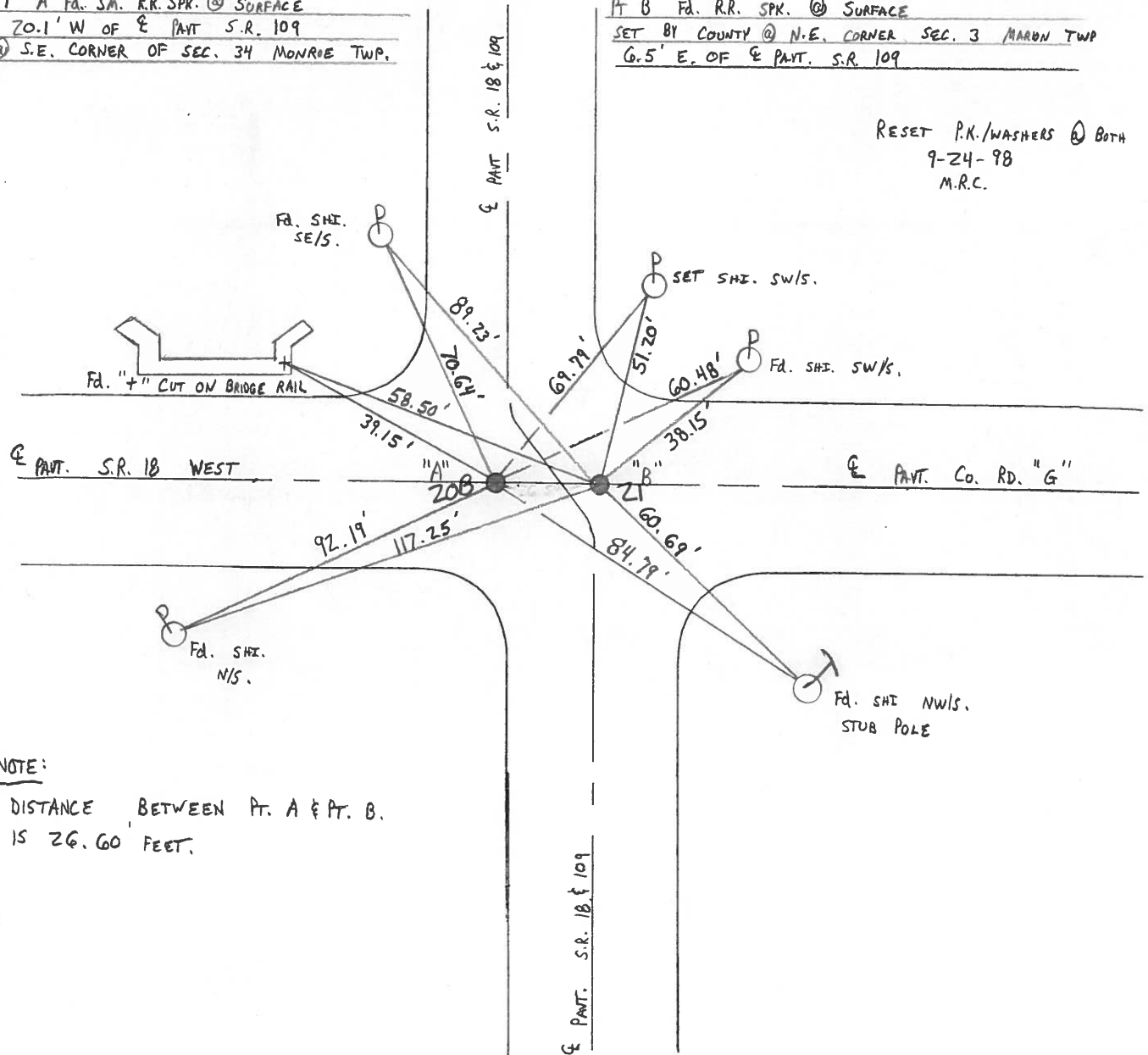
TYPE MONUMENT	A - SM. R.R. SPK.	B - R.R. SPK.
ON SURFACE -	<u>BELOW</u> SURFACE	SURFACE
LEFT -	← PAV'T. -	RIGHT → PAV'T.
	20.5' LT PAV'T. 109	6.5' RT PAV'T. 109
TO	EDGE PAVEMENT	
S.L.M. A =	525+47 , B = 525+69	



PT 'A' Fd. SM. R.R. SPK. @ SURFACE
 20.1' W OF E PAVT S.R. 109
 @ S.E. CORNER OF SEC. 34 MONROE TWP.

PT 'B' Fd. R.R. SPK. @ SURFACE
 SET BY COUNTY @ N.E. CORNER SEC. 3 MARION TWP
 6.5' E. OF E PAVT. S.R. 109

RESET P.N./WASHERS @ BOTH
 9-24-98
 M.R.C.



NOTE:
 DISTANCE BETWEEN PT. A & PT. B.
 IS 26.60 FEET.

O.D.O.T. DISTRICT 2 SURVEY OFFICE

PERSONNEL _____

REFERENCE NO. 21

SHEET 8 OF _____

NOTES BARNHISEL

H.C. _____

DATE 4-3-89

ROUTE 18

R.C. Loehrke

WEATHER cloudy

COUNTY HENRY

TEMP. +48°

TOWNSHIP MARION

SECTION 2

T3 N R 7 E

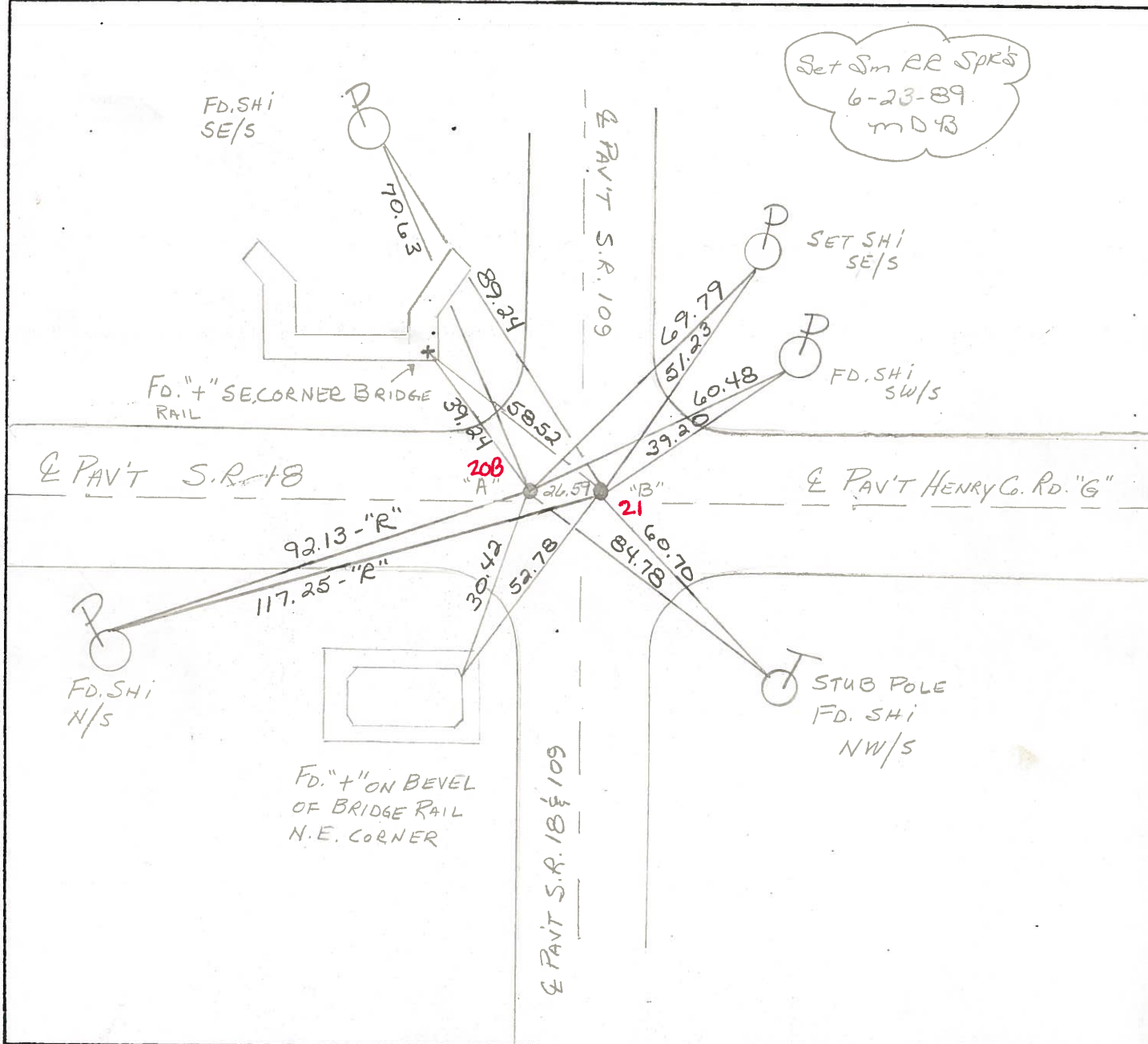
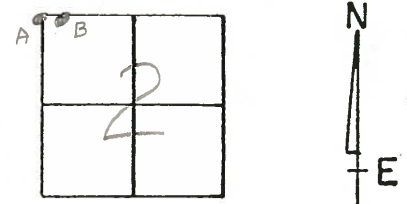
TYPE MONUMENT PK&WASHER, PK&WASHER

ON SURFACE - ~~BELOW~~ YES, YES

LEFT- & PAV'T. - RIGHT 1.3 R.(A), (B) 6.5L

TO EDGE PAVEMENT

S.L.M. "A" 525+47, "B" 525+69



Q.D.O.T. DISTRICT 2 SURVEY OFFICE

SHEET _____ OF _____

County HENRY S.R. 109 & 18

Date April 26, 83

Township MONROE & MARION

Weather CLEAR

Section 34 & 3

Temp. +65°

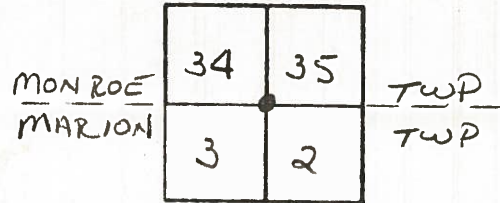
T.N, R.E

Personnel HOFFMAN

LOHRKE

BARNHISEL

#21



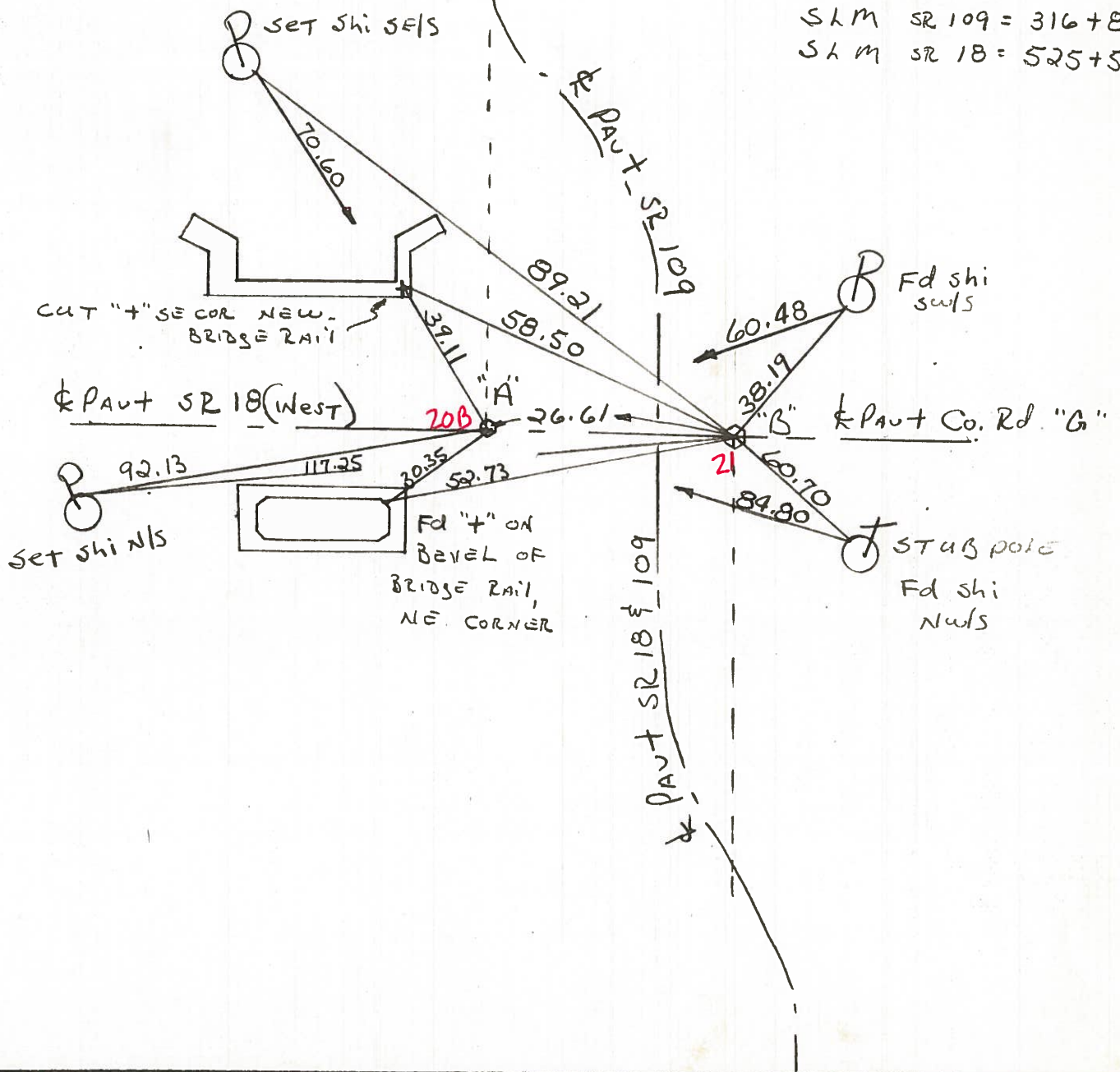
PT "A" Fd small RR SPK @ SURFACE
2011' West of & PAUT SR 109
@ S.E. CORNER SEC. 34, MONROE TWP

PT "B" Fd RR SPK @ SURFACE
Set BY COUNTY @ N.E. CORNER
SEC 3, MARION TWP.

6.5' EAST of & PAUT SR 109

SLM SR 109 = 316 + 81

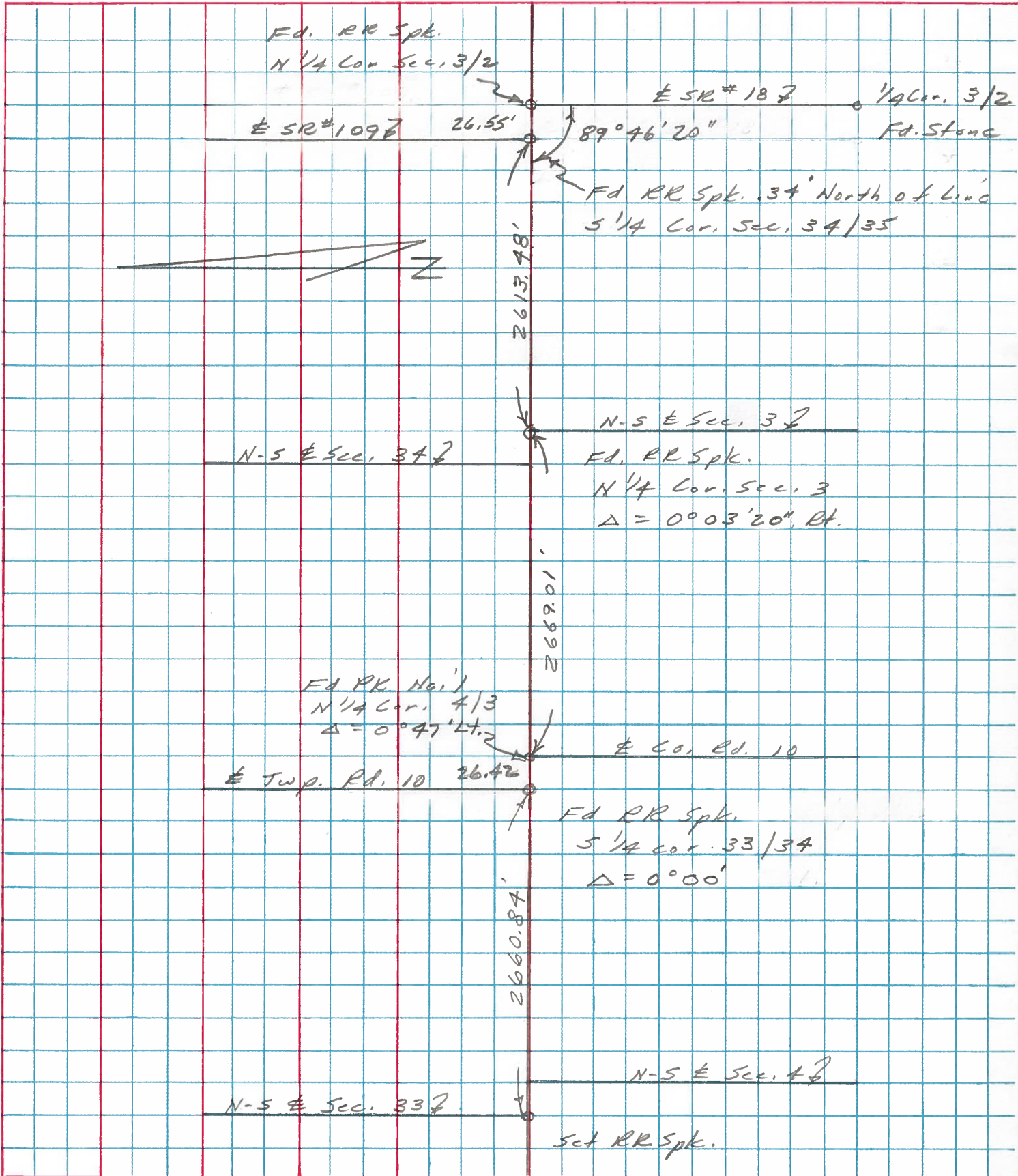
SLM SR 18 = 525 + 51



PERSONNEL	TITLE	PERSONNEL	TITLE	COUNTY	DATE	WEATHER	TEMP.
Stone				Henry	9 Jan. 75	Cloudy	41°
Michalak				#18			
Dunn							
Curtis				SEC. Monroec-Madison Twp.			

DESCRIPTION _____ Alignment _____ JOB NO. _____

LEFT CENTER LINE RIGHT



PERSONNEL	TITLE	PERSONNEL	TITLE	COUNTY	Henry	DATE	23 April 79
Stone				S. R.	18	WEATHER	Cloudy
Michalak				SEC.	Marion Twp.	TEMP.	45°
Denno							
Curtis							

DESCRIPTION Alignment LEFT CENTER LINE RIGHT JOB NO. 02799(0)

