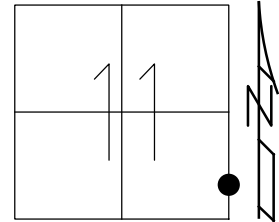


O.D.O.T. DISTRICT 2 SURVEY OFFICE (USE ONLY)

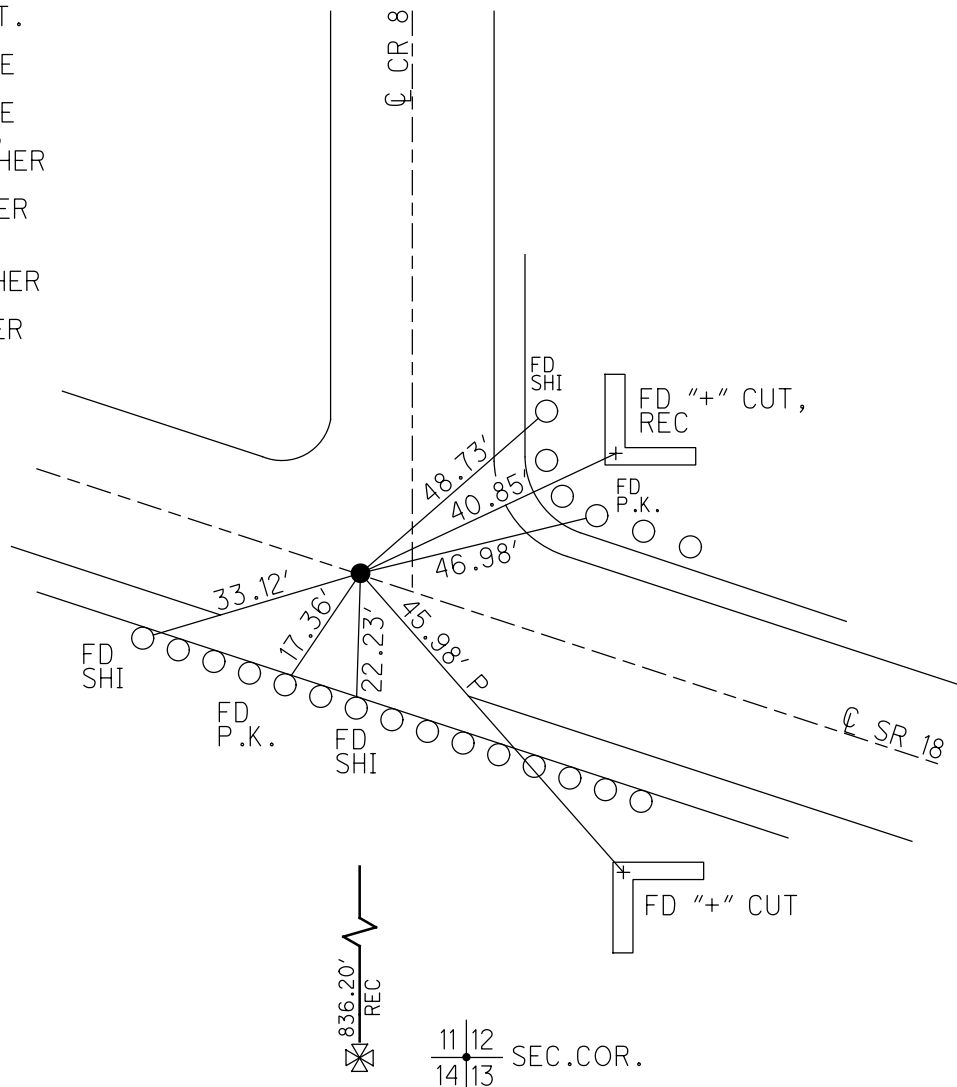
PERSONNEL _____ REFERENCE NO. 27 SHEET 31 OF 31
 NOTES AUBLE DATE 5/17/21 ROUTE SR 18
 H.C. NIESE WEATHER CLOUDY COUNTY HENRY
 R.C. O'DONNELL TEMP. 63° TOWNSHIP MARION
 DWG BY NIESE PID PAVETRAIN SECTION 11
 T 3 N R 7 E

TYPE MONUMENT MAG/WASHER
 ON SURFACE - ~~BELOW~~ ON
 OFFSET $\text{\textcircled{C}}$ PAVEMENT 0.5' LT : ~~RT~~
10.7' TO RT EDGE PAVEMENT
 STATION: 660+52.80



HORZ.DATUM: NAD83 (2011) GEOID: NAVD88 2012A
 GRID: NORTHING: 572271.349 EASTING: 1551300.270

RECORD: P.O.T.
 $\Delta = 00^{\circ}00'$
 SET R.R. SPIKE
 AS PER PLAN
 SET R.R. SPIKE
 10/14/86, MDB
 SET P.K./WASHER
 9/7/95, SAH
 FD P.K./WASHER
 6/28/08, RGN
 5/13/10, KPM
 SET MAG/WASHER
 7/26/10, SAH
 FD MAG/WASHER
 REF27
 5/17/21, JFO
 9/3/21, TDN



O.D.O.T. DISTRICT 2 SURVEY OFFICE (USE ONLY)

PERSONNEL

REFERENCE NO. 27

SHEET 31 OF 31

NOTES MOSER

DATE 5/13/10

ROUTE SR 18

H.C. MOSER

WEATHER DRIZZLE

COUNTY HENRY

R.C. GOLDBERG

TEMP. 70°

TOWNSHIP MARION

SECTION 11

T 3 N R 7 E

TYPE MONUMENT P.K./WASHER

ON SURFACE - ~~BELOW~~ ON

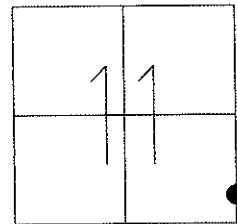
LEFT - Q PAV'T - ~~RIGHT~~ 0.5'

10.7' TO RT EDGE PAVEMENT

S.L.M. 660+52.8

Grid: Northing: 57271.420

Easting: 1551300.224



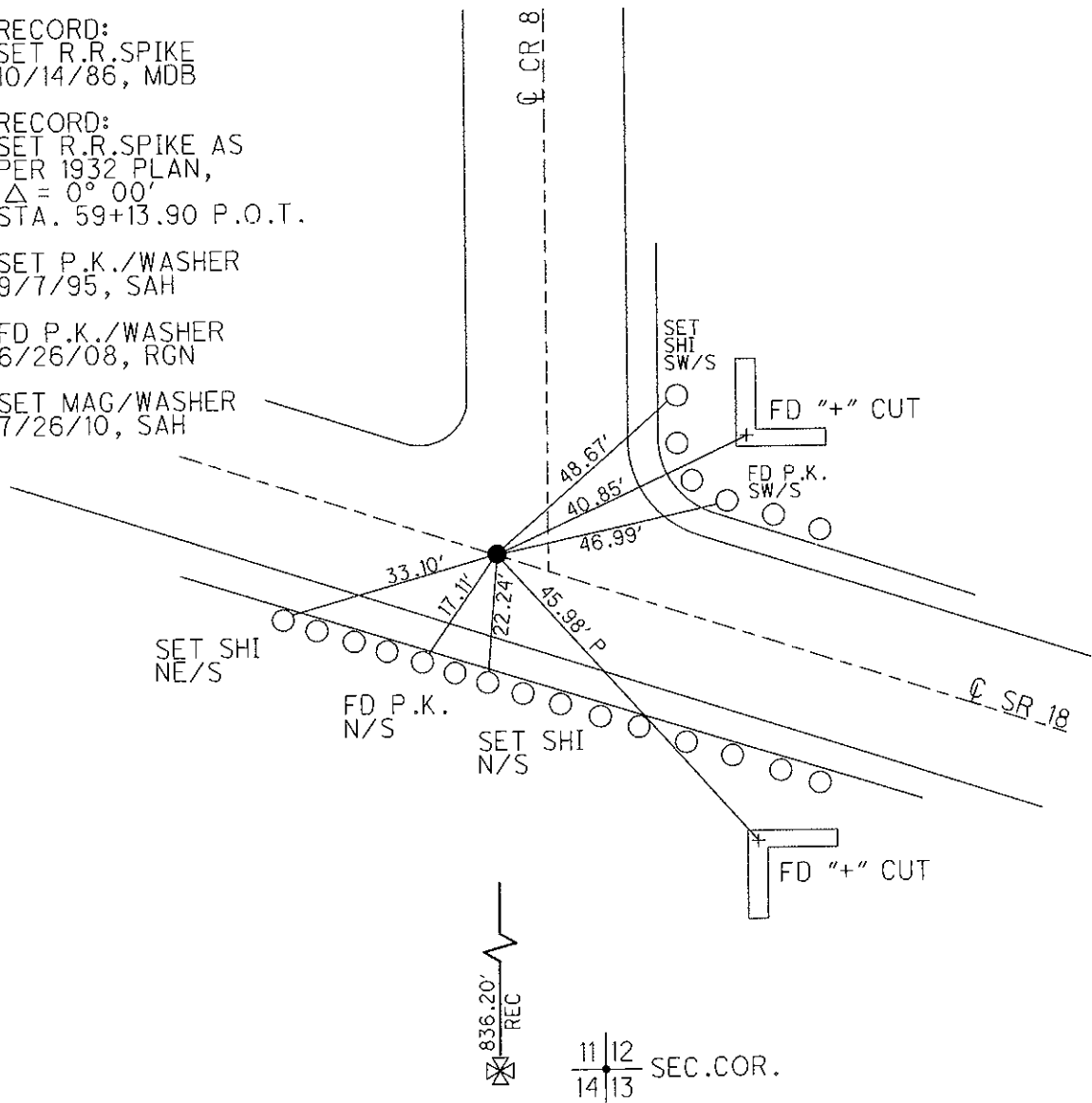
RECORD:
SET R.R. SPIKE
10/14/86, MDB

RECORD:
SET R.R. SPIKE AS
PER 1932 PLAN,
 $\Delta = 0^\circ 00'$
STA. 59+13.90 P.O.T.

SET P.K./WASHER
9/7/95, SAH

FD P.K./WASHER
6/26/08, RGN

SET MAG/WASHER
7/26/10, SAH



O.D.O.T. DISTRICT 2 SURVEY OFFICE

PERSONNEL

REFERENCE NO. 27

SHEET 4 OF 13

NOTES Huss

H.C. VAN DUSEN

DATE 6-7-95

ROUTE SR 18

R.C. MOSEZ

WEATHER SUNNY

COUNTY Henry

TEMP. 80°

TOWNSHIP Marion

SECTION 12

T. 3 N R. 7 E

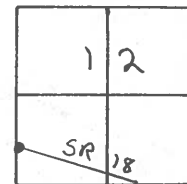
TYPE MONUMENT SM. RR SPIKE

ON SURFACE - ~~BELOW~~ YES

LEFT - ~~℄~~ PAV'T. - RIGHT ON ℄

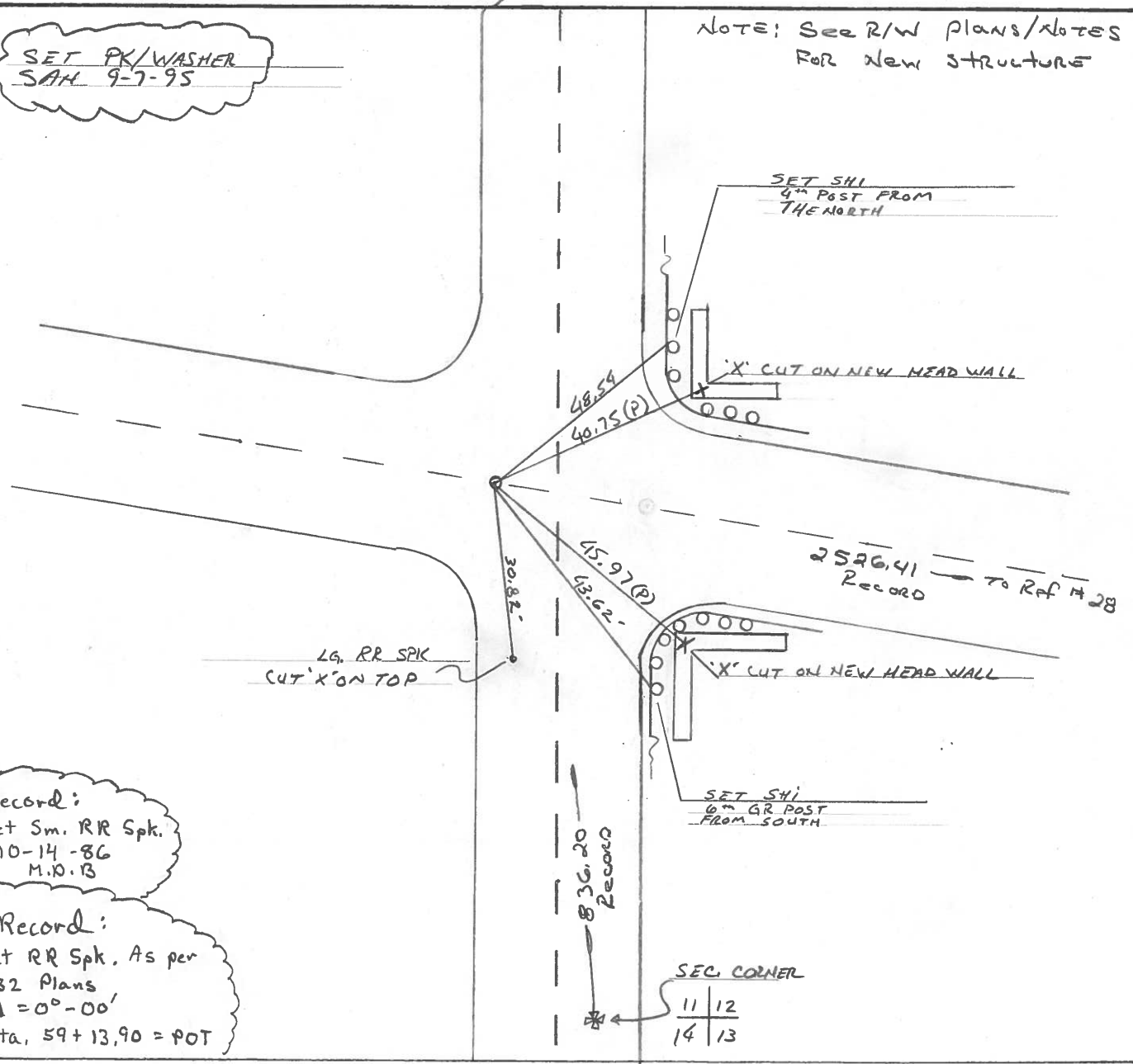
- TO - EDGE PAVEMENT

S.L.M. 660+23 10.4' RT EOP



SET PK/WASHER
SAM 9-7-95

NOTE: See R/W plans/notes
For new structure



Record:
Set Sm. RR Spk.
10-14-86
M.D.B

Record:
Set RR Spk. As per
1932 Plans
Δ = 0°-00'
Sta. 59+13.90 = POT

836.20
Record

2526.41
Record → to Ref # 28

SET SHI
6" GR POST
FROM SOUTH

SET SHI
4" POST FROM
THE NORTH

O.D.O.T. DISTRICT 2 SURVEY OFFICE

PERSONNEL _____

REFERENCE NO. 27

SHEET _____ OF _____

NOTES BARNHISEL

H.C. Lochrke

R.C. Sackman

DATE Aug 4, 1986

WEATHER SUNNY

TEMP. +84

ROUTE SR 18

COUNTY HENRY

TOWNSHIP MARION

SECTION 12

T. 3 N. 7 E.

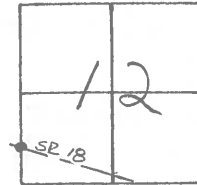
TYPE MONUMENT Sm RR Spk

ON SURFACE - ~~BELOW~~ yes

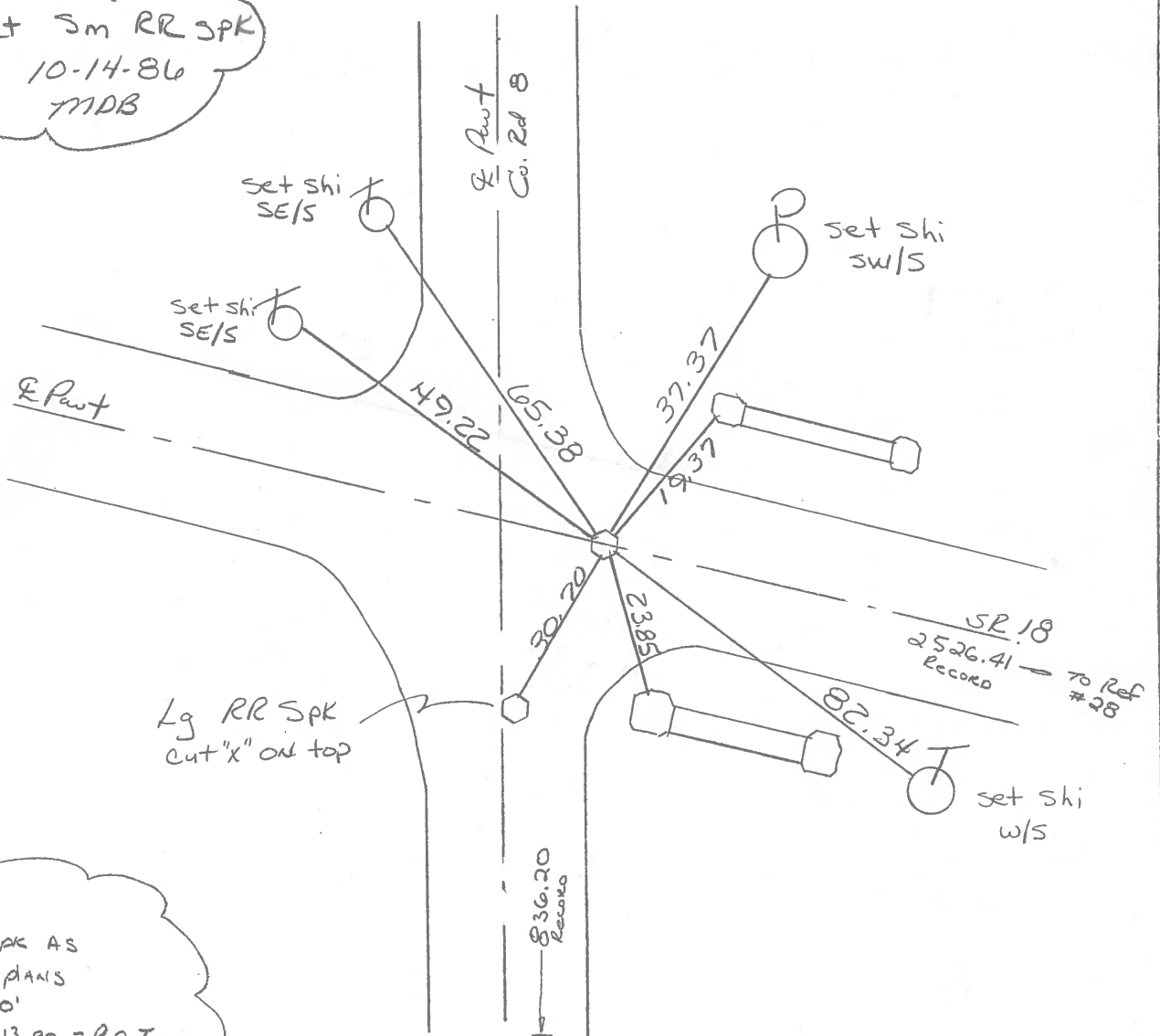
LEFT - & PAV'T. - ~~RIGHT~~ yes

- TO - EDGE PAVEMENT

S.L.M. 660 to 1 8' E of Co Rd '8" N



Set Sm RR Spk
10-14-86
MDB



Records:
Set R.R. Spk AS
per 1932 plans
 $\Delta = 0^\circ - 00'$
Sta. 59+13.90 = P.O.T.

836.20
Records
Sec. Cor
11/12
14/13

PERSONNEL TITLE PERSONNEL TITLE

Stone
Michalak
Juno

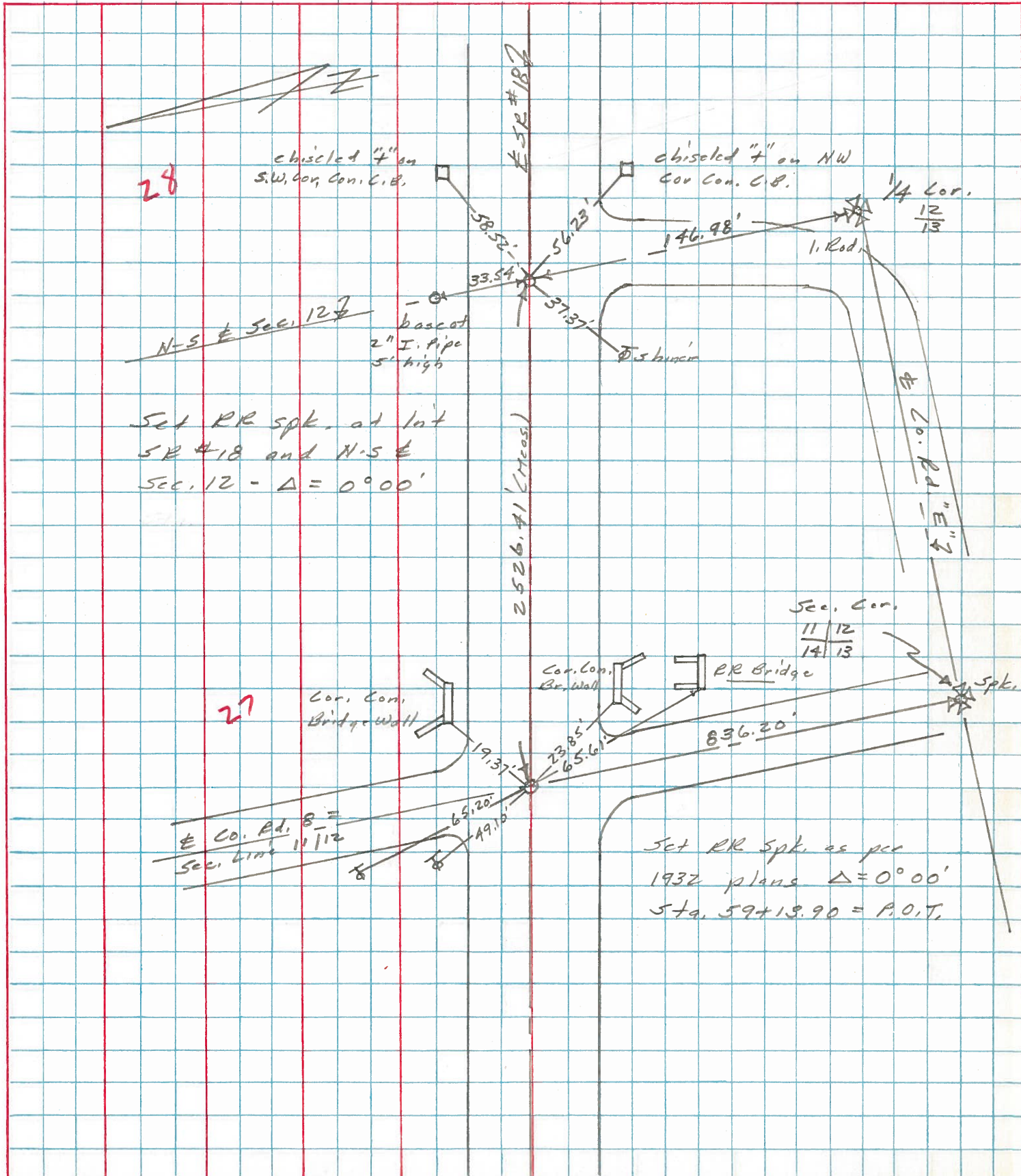
COUNTY Henry DATE 16 May 74

S. R. #18 WEATHER Cloudy

SEC. Moulou Twp. TEMP. 70°

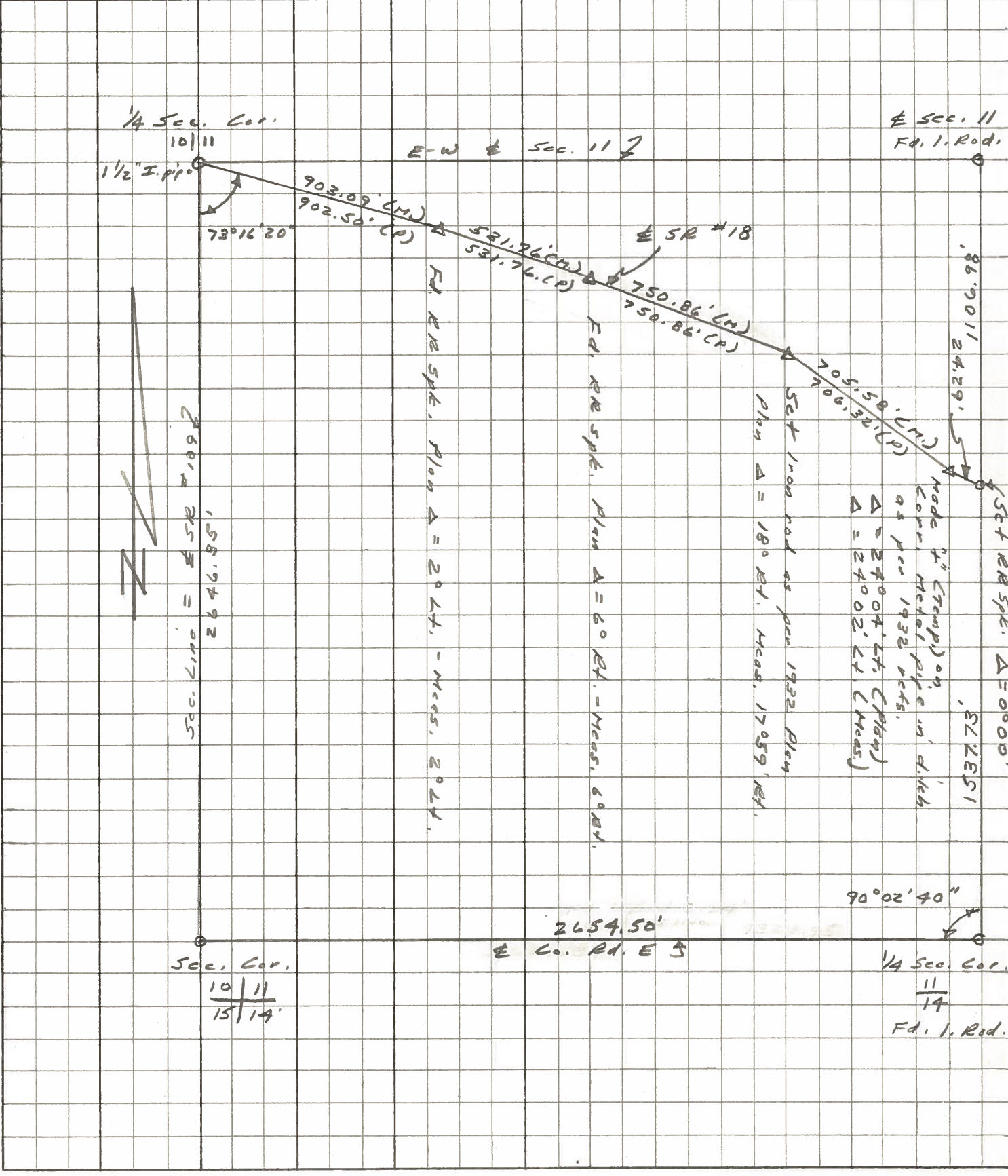
DESCRIPTION Rds to Control Points JOB NO. 02999(2)

LEFT CENTER LINE RIGHT



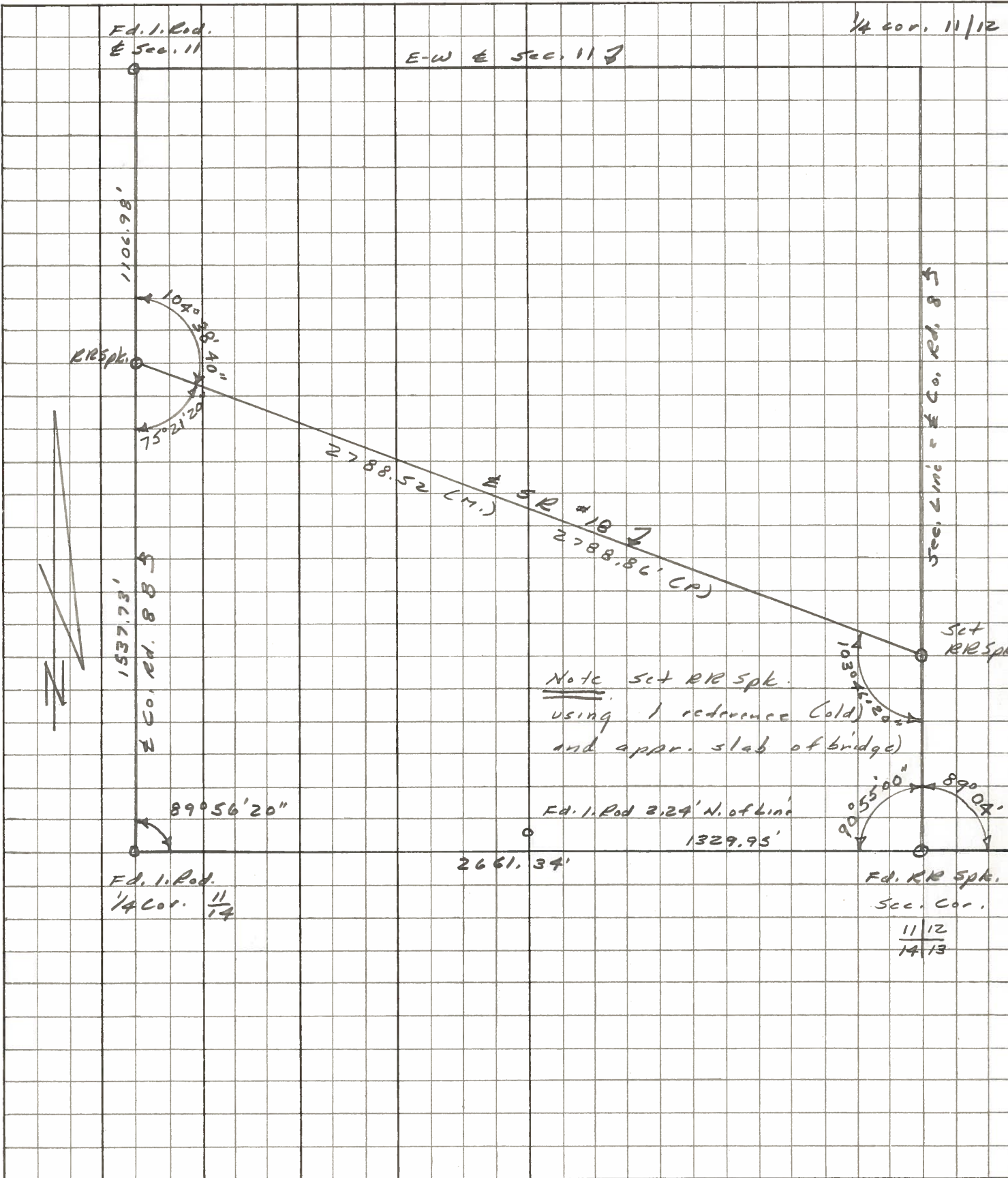
PERSONNEL TITLE PERSONNEL TITLE COUNTY Henry DATE 23 April 79
Stone _____ Michalak _____ S. R. #18 WEATHER Cloudy
Dennis _____ Curtis _____ SEC. Marion Twp. TEMP. 45°

DESCRIPTION Alignment CENTER LINE RIGHT JOB NO. 82999(6)



PERSONNEL	TITLE	PERSONNEL	TITLE	COUNTY	DATE	WEATHER	TEMP.
Stone				Henry	23 April 74	Cloudy	95°
Michaelok				18			
Danna				Marion Twp.			
Curtis							

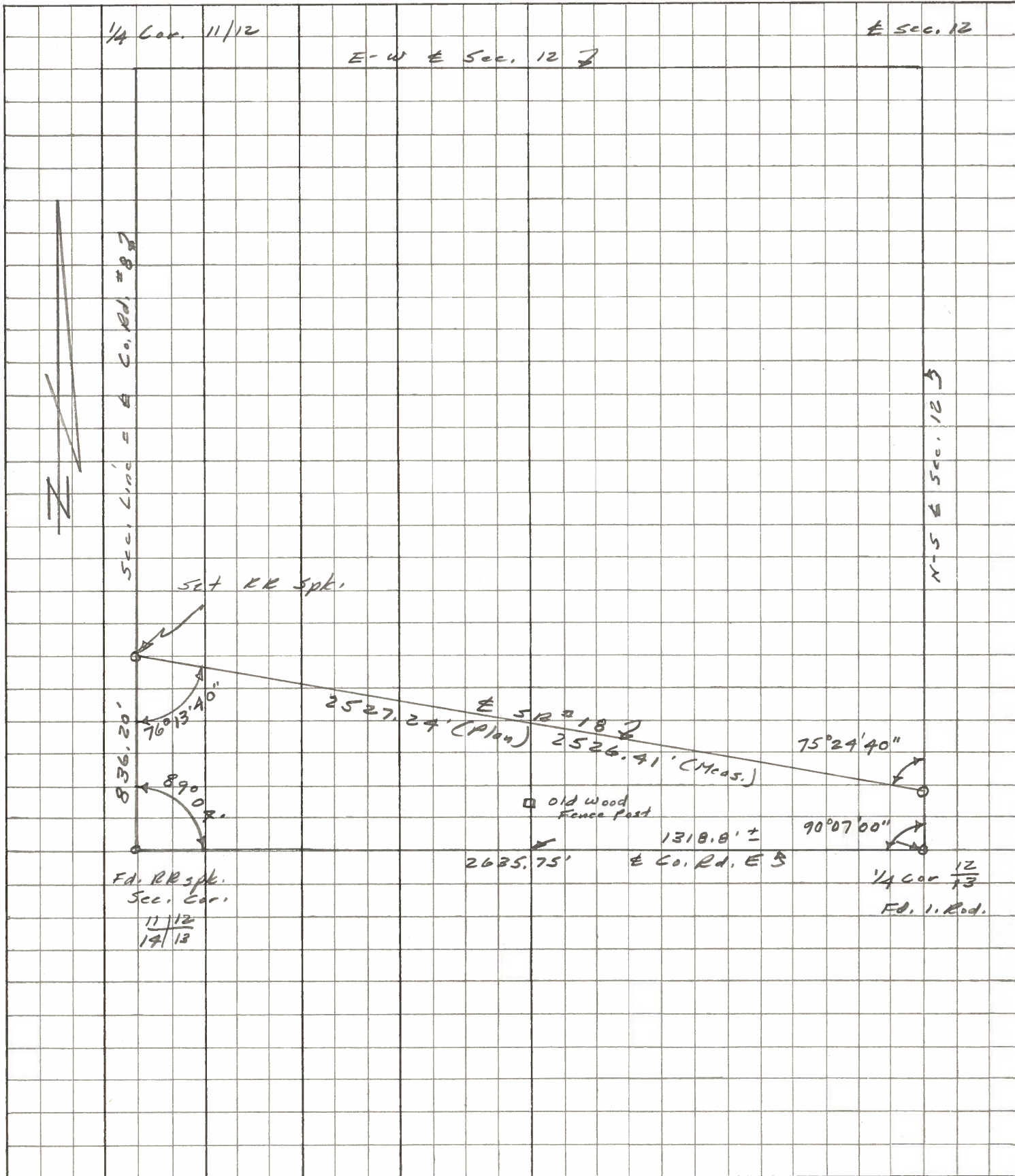
DESCRIPTION Alignment CENTER LINE JOB NO. 02999 (0)



PERSONNEL	TITLE	PERSONNEL	TITLE	COUNTY	DATE	WEATHER	TEMP.
Stone				Henry	23 April 74	Cloudy	45°
Michalak				# 18			
Denna							
Curtis				Sec. Marion Twp.			

DESCRIPTION Alignment JOB NO. 02999(0)

LEFT CENTER LINE RIGHT



PERSONNEL TITLE PERSONNEL TITLE

BURNSIDE
SMITH
KIJOWSKI

COUNTY HENRY

DATE 8-28-72

S. R. 18

WEATHER CLEAR

SEC. HAMLER

TEMP. +75°

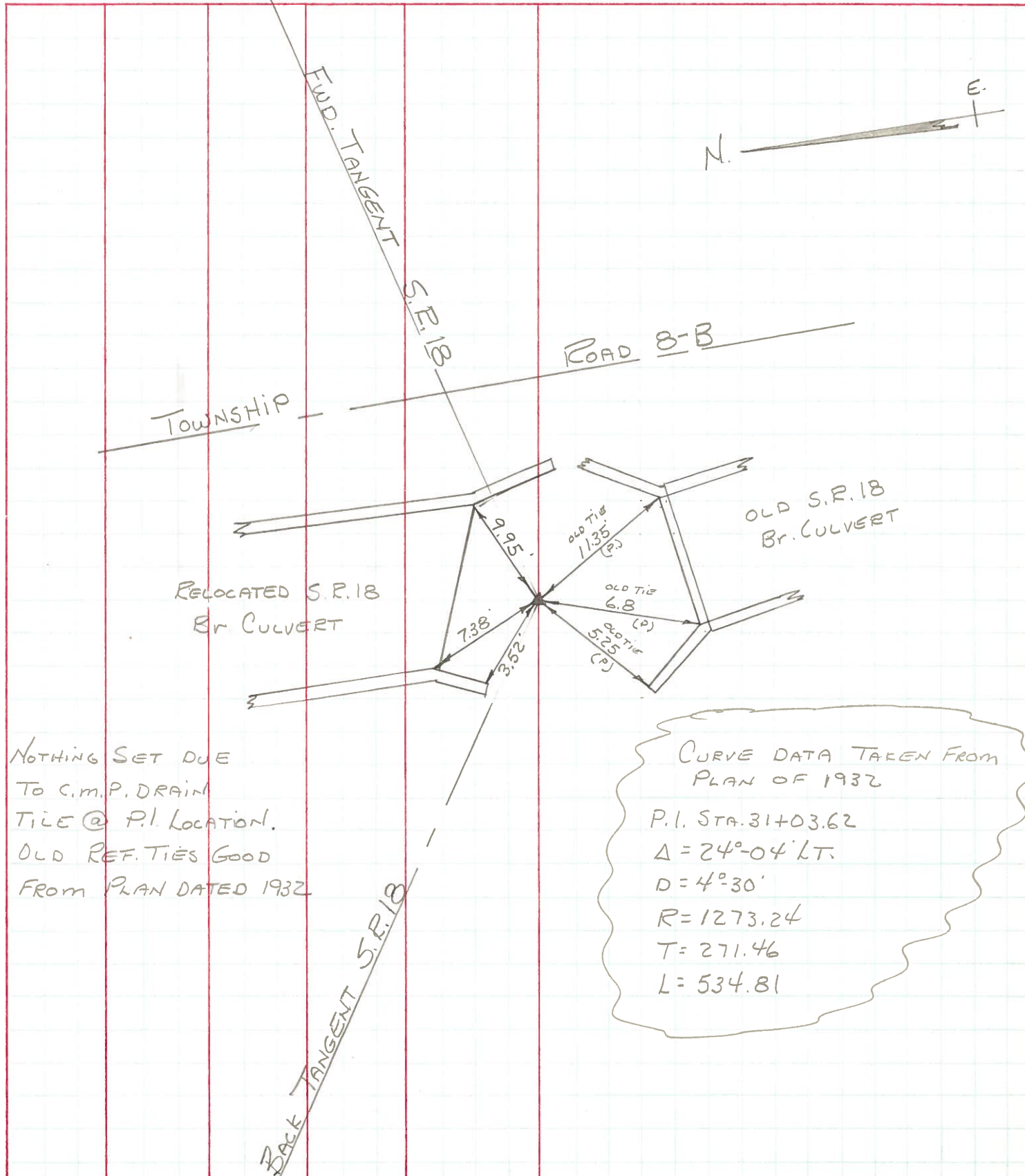
DESCRIPTION

LEFT

CENTER LINE

RIGHT

JOB NO. _____



NOTHING SET DUE
 TO C.M.P. DRAIN
 TILE @ P.I. LOCATION.
 OLD REF. TIES GOOD
 FROM PLAN DATED 1932

CURVE DATA TAKEN FROM
 PLAN OF 1932

P.I. STA. 31+03.62
 $\Delta = 24^{\circ}-04' \text{ LT.}$
 $D = 4^{\circ}-30'$
 $R = 1273.24$
 $T = 271.46$
 $L = 534.81$