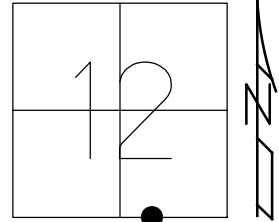


O.D.O.T. DISTRICT 2 SURVEY OFFICE (USE ONLY)

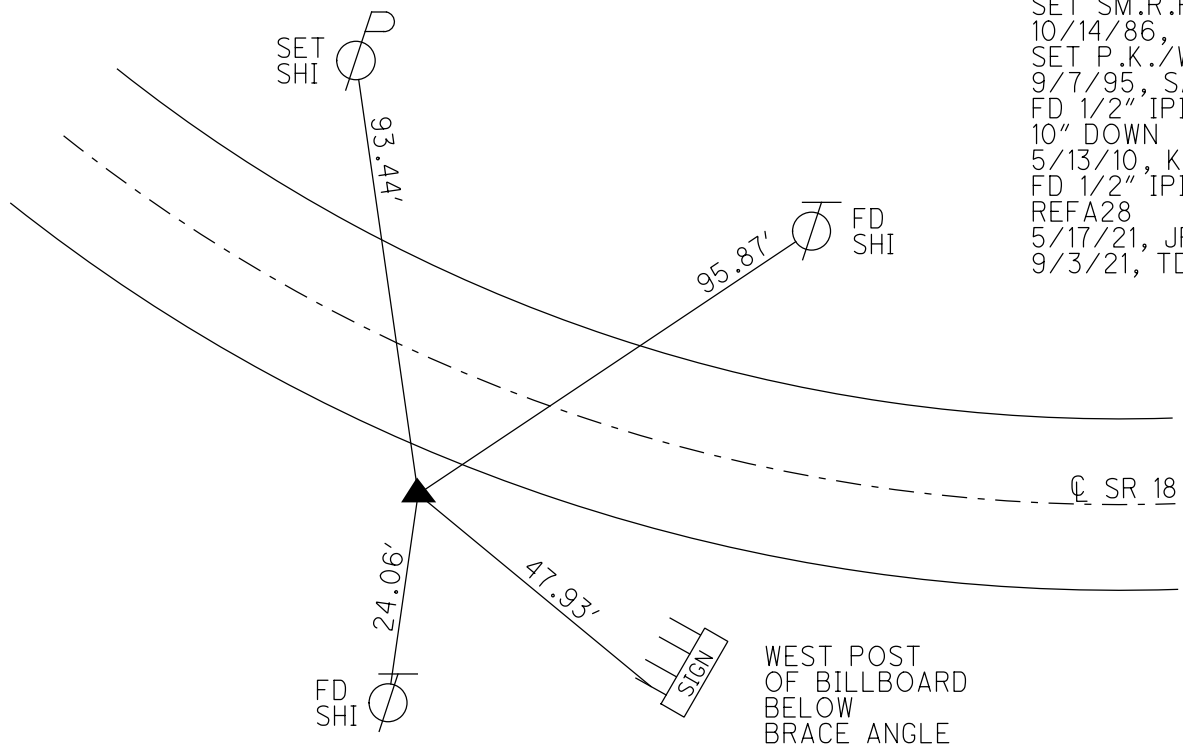
PERSONNEL \_\_\_\_\_ REFERENCE NO. 28 A SHEET 2 OF 12  
 NOTES AUBLE DATE 5/17/21 ROUTE SR 18  
 H.C. NIESE WEATHER CLOUDY COUNTY HENRY  
 R.C. O'DONNELL TEMP. 68° TOWNSHIP MARION  
 DWG BY NIESE PID PAVETRAIN SECTION 12  
 T 3 N R 7 E

TYPE MONUMENT 1/2" IPIN  
~~ON SURFACE~~ - BELOW 10"  
 OFFSET 13.2' ± : RT  
2.6' TO RT EDGE PAVEMENT  
 STATION: 693+17.99

HORIZ.DATUM: NAD83(2011) GEOID: NAVD88 2012A  
 GRID: NORTHING: 571406.552 EASTING: 1554489.592



RECORD:  
 1932 CURVE DATA:  
 $\Delta = 14^\circ 00' \text{ LT}$   
 $O = 4^\circ 00'$   
 $R = 1432.69'$   
 $T = 184.80'$   
 $L = 367.50'$   
 SET IPIN  
 W/1932 REF  
 STA. 92+04.60  
 $\Delta = 14^\circ 44' \text{ LT}$   
 SET SM.R.R.SPIKE  
 10/14/86, MDB  
 SET P.K./WASHER  
 9/7/95, SAH  
 FD 1/2" IPIN  
 10" DOWN  
 5/13/10, KPM  
 FD 1/2" IPIN  
 REFA28  
 5/17/21, JFO  
 9/3/21, TDN

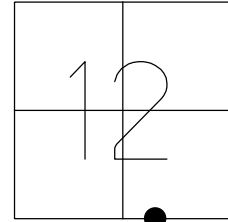


O.D.O.T. DISTRICT 2 SURVEY OFFICE (USE ONLY)

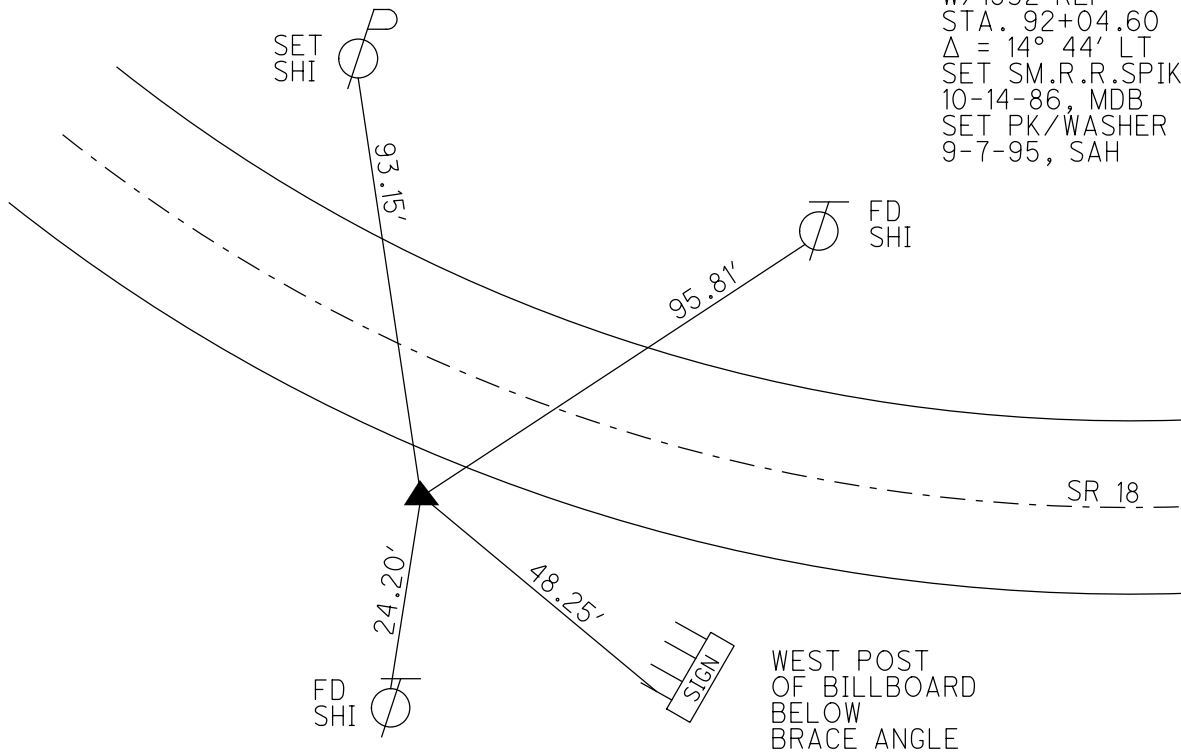
PERSONNEL \_\_\_\_\_ REFERENCE NO. 28A SHEET 2 OF 12  
 NOTES MOSER DATE 5-13-10 ROUTE SR 18  
 H.C. MOSER WEATHER CLOUDY COUNTY HENRY  
 R.C. GOLDBERG TEMP. 70° TOWNSHIP MARION  
 \_\_\_\_\_ SECTION 12  
 \_\_\_\_\_ T 3 N R 7 E

TYPE MONUMENT 1/2" IPIN  
~~ON SURFACE~~ - BELOW 10"  
~~LEFT~~ - Q PAV'T - RIGHT 13.2'  
2.6' TO RT EDGE PAVEMENT  
 S.L.M. 693+17.99

GRID: NORTHING: 571406.588 EASTING: 1554489.530



RECORD:  
 1932 CURVE DATA:  
 $\Delta = 14^\circ 00' \text{ LT}$   
 $\theta = 4^\circ 00'$   
 $R = 1432.69'$   
 $T = 184.80'$   
 $L = 367.50'$   
 SET IPIN  
 W/1932 REF  
 STA. 92+04.60  
 $\Delta = 14^\circ 44' \text{ LT}$   
 SET SM.R.R.SPIKE  
 10-14-86, MDB  
 SET PK/WASHER  
 9-7-95, SAH



O.D.O.T. DISTRICT 2 SURVEY OFFICE

PERSONNEL

REFERENCE NO. 28A

SHEET 6 OF 13

NOTES MOSER

DATE 5-13-10

ROUTE SR 18

H.C. MOSER

WEATHER CLOUDY

COUNTY HENRY

R.C. GOLDBERG

TEMP. 70°

TOWNSHIP MARION

SECTION 12

T 3 N R 7 E

TYPE MONUMENT 1/2" IRON ROD

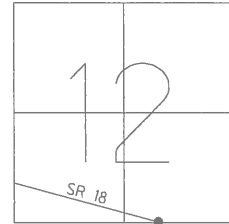
~~ON SURFACE~~ - BELOW 10"

~~LEFT - C PAV'T~~ - RIGHT 13.2'

2.6' TO RT. EDGE PAVEMENT

S.L.M. 687+18 6' W. OF CR. E

Grid: Northing: 571406.588 Easting: 1554489.530



1932 CURVE DATA:

$\Delta = 14^\circ - 00' \text{ LT.}$

$O = 4^\circ - 00'$

$R = 1432.69'$

$T = 184.80'$

$L = 367.50'$

RECORDED: SET IRON ROD

AS PER 1932 REF. AT

INT. OF SECTION LINE

STA. 92+04.60

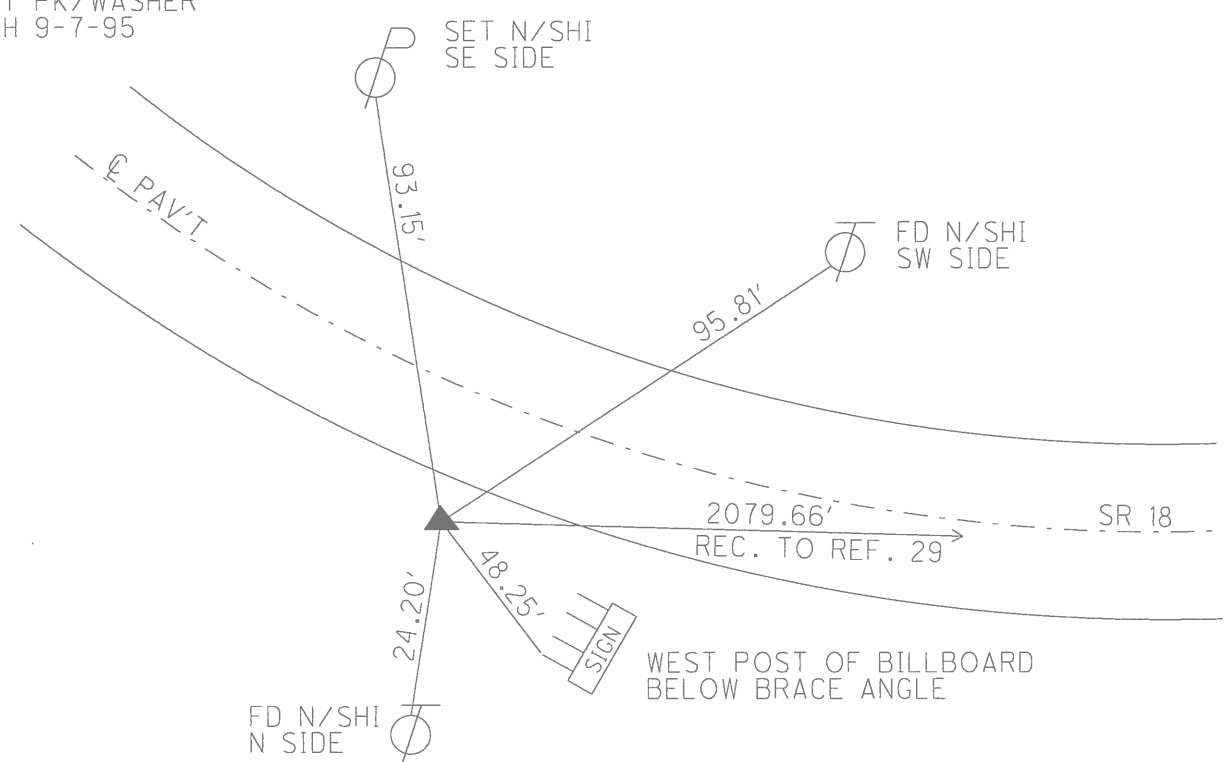
$\Delta = 14^\circ - 44' \text{ LT.}$

RECORD: SET SM. RR. SPIKE

10-14-86 MDB

SET PK/WASHER

SAH 9-7-95



# O.D.O.T. DISTRICT 2 SURVEY OFFICE

PERSONNEL

REFERENCE NO. 28 A

SHEET 6 OF 13

NOTES BARNHISEL

H.C. LOENRKE

DATE 8-4-86/CK 6-7-95

ROUTE SR 18

R.C. SOCKMAN

WEATHER SUNNY

COUNTY Henry

TEMP. 84°

TOWNSHIP Marion

SECTION 12

T 3 N R 7 E

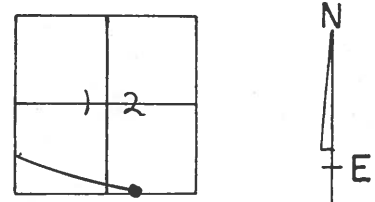
TYPE MONUMENT IRON ROD (REC)

ON SURFACE - BELOW 3" (REC)

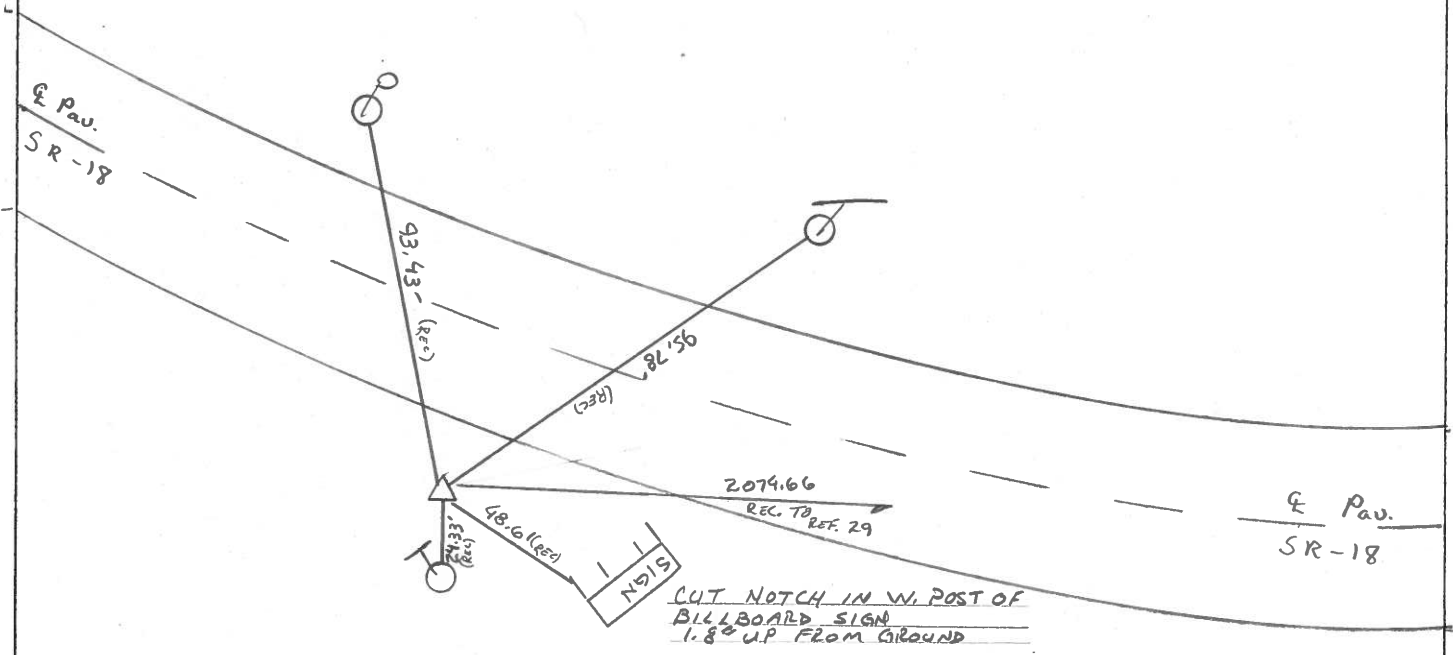
LEFT- & PAV'T. - RIGHT 12.8 (REC)

2.6 TO RT EDGE PAVEMENT

S.L.M. 693+63/13.14



Notes: Did not dig/locate - ALL RECORD DATA



1932 Curve Data  
 A = 14°-42' Lt  
 O = 4°-00'  
 R = 1432-69  
 T = 184.80  
 L = 367.50

Recorded  
 Set Iron Rod  
 as per 1932 Ref  
 at int. of  
 Section line  
 Sta 92+04.60  
 A = 14°-44' Lt

# O.D.O.T. DISTRICT 2 SURVEY OFFICE

PERSONNEL \_\_\_\_\_

REFERENCE NO. 28-A

SHEET \_\_\_\_\_ OF \_\_\_\_\_

NOTES BARNHISEL

H.C. Loehrke

R.C. SOCKMAN

DATE Aug 4, 1986

WEATHER SUNNY

TEMP. +84°

ROUTE SR 18

COUNTY HENRY

TOWNSHIP MARION

SECTION 12

T. 3 N. R. 7 E

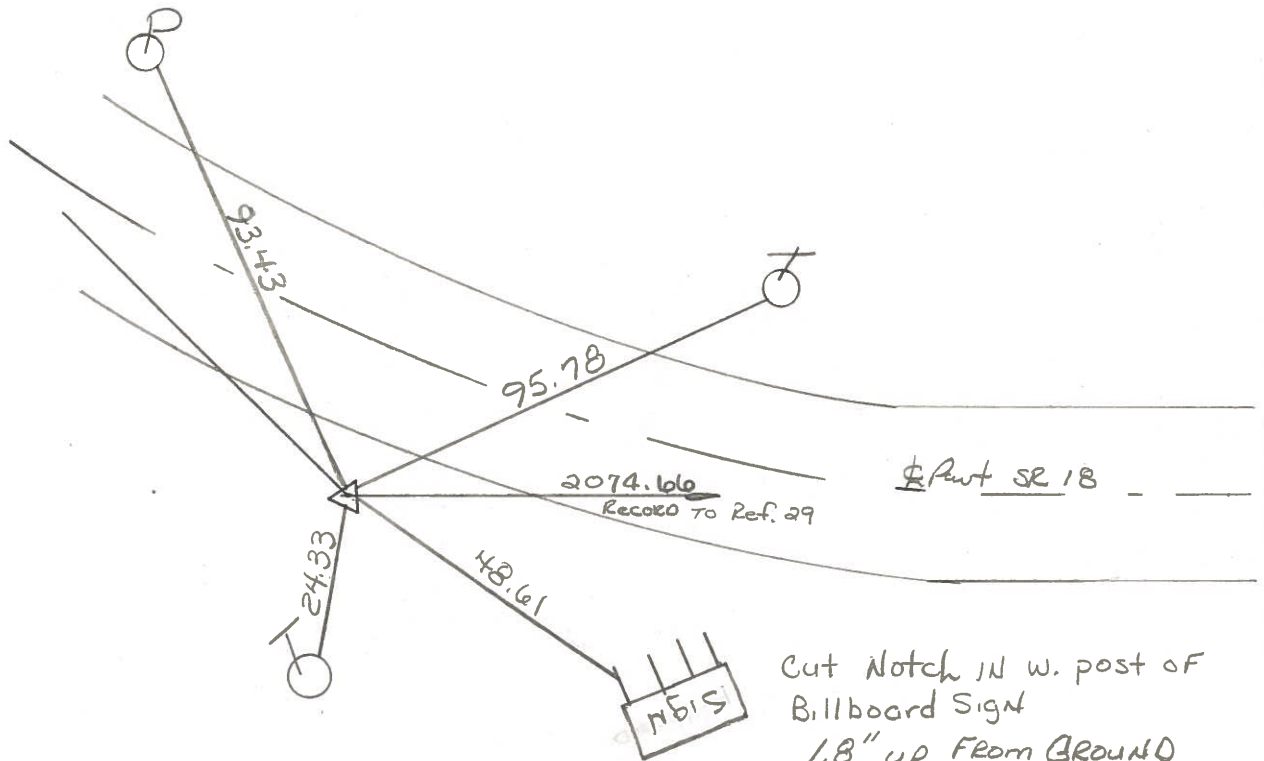
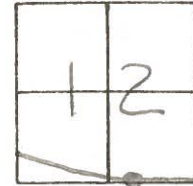
TYPE MONUMENT Iron Rod

ON SURFACE - BELOW 3"

LEFT - & PAV'T. - RIGHT 12.8

2.4 RHO RT EDGE PAVEMENT

S.L.M. \_\_\_\_\_



**1932 CURVE DATA**

$\Delta = 14^{\circ} - 42' \text{ Lt.}$

$D = 4^{\circ} - 00'$

$R = 1432.69$

$T = 184.80$

$L = 367.50$

**RECORD:**

Set IRON ROD AS PER

1932 Ref. & int. of

Section line.

STA 92+04.60

$\Delta = 14^{\circ} - 44' \text{ Lt.}$





PERSONNEL	TITLE	PERSONNEL	TITLE
Stone			
Michalak			
Dennis			
Curtis			

COUNTY Henry DATE 23 April 74  
 S. R. #18 WEATHER Cloudy  
 SEC. Marion Twp. TEMP. 45°

DESCRIPTION Alignment JOB NO. 02799 (e)

