

O.D.O.T. DISTRICT 2 SURVEY OFFICE (USE ONLY)

PERSONNEL

REFERENCE NO. 29

SHEET 3 OF 13

NOTES AUBLE

DATE 7/7/23

ROUTE SR 18

H.C. AUBLE

WEATHER CLEAR

COUNTY HENRY

R.C. RHOADES

TEMP. 76°

TOWNSHIP MARION

SECTION 12

DWG BY RHOADES PID R/W

T 3 N R 7 E

TYPE MONUMENT MAG/WASHER

ON SURFACE - ~~BELOW~~ ON

OFFSET \varnothing PAVEMENT 3.0' LT : ~~RT~~

8.0' TO LT EDGE PAVEMENT

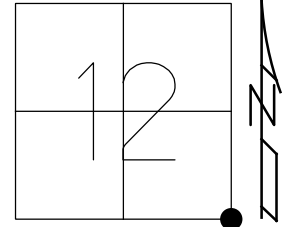
STATION: 714+03

HORZ. DATUM: NAD83 2011

GEOID: NAVD88 2018

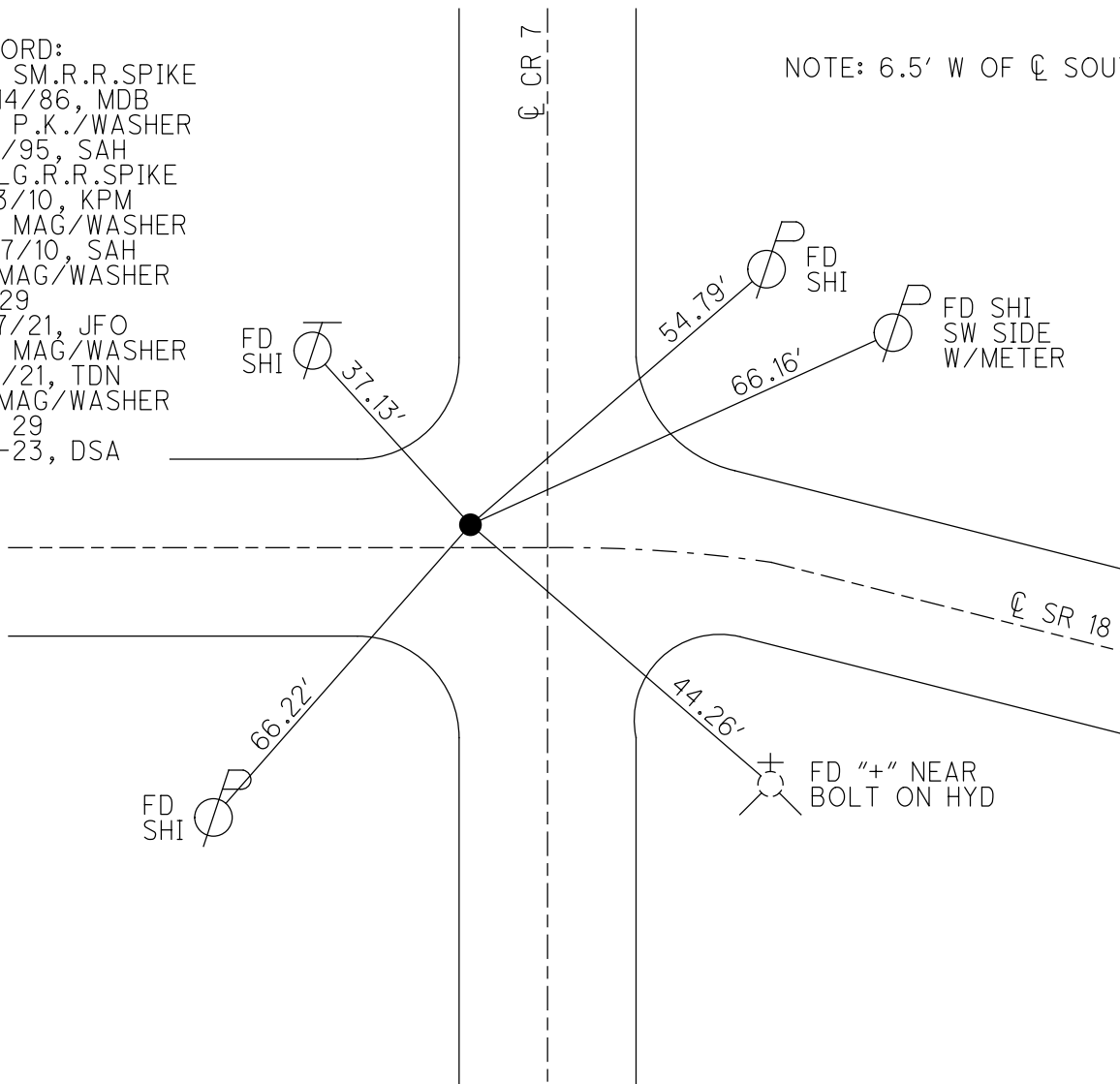
GRID: NORTHING: 571390.477

EASTING: 1556563.908



RECORD:
 SET SM.R.R.SPIKE
 10/14/86, MDB
 SET P.K./WASHER
 9/7/95, SAH
 FD LG.R.R.SPIKE
 5/13/10, KPM
 SET MAG/WASHER
 7/27/10, SAH
 FD MAG/WASHER
 REF 29
 5/17/21, JFO
 SET MAG/WASHER
 9/3/21, TDN
 FD MAG/WASHER
 REF 29
 7-7-23, DSA

NOTE: 6.5' W OF \varnothing SOUTH



O.D.O.T. DISTRICT 2 SURVEY OFFICE (USE ONLY)

PERSONNEL

REFERENCE NO. 29

SHEET 3 OF 12

NOTES AUBLE DATE 5/17/21
 H.C. NIESE WEATHER CLOUDY
 R.C. O'DONNELL TEMP. 68°

ROUTE SR 18
 COUNTY HENRY
 TOWNSHIP MARION
 SECTION 12

DWG BY NIESE PID PAVETRAIN

T 3 N R 7 E

TYPE MONUMENT MAG/WASHER

ON SURFACE - ~~BELOW~~ ON

OFFSET \varnothing PAVEMENT 3.0' LT : ~~RT~~

8.0' TO LT EDGE PAVEMENT

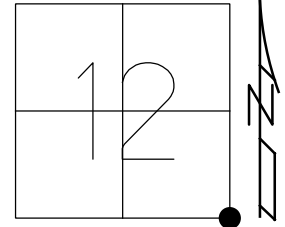
STATION: 714+03

HORZ.DATUM: NAD83(2011)

GEOID: NAVD88 2012A

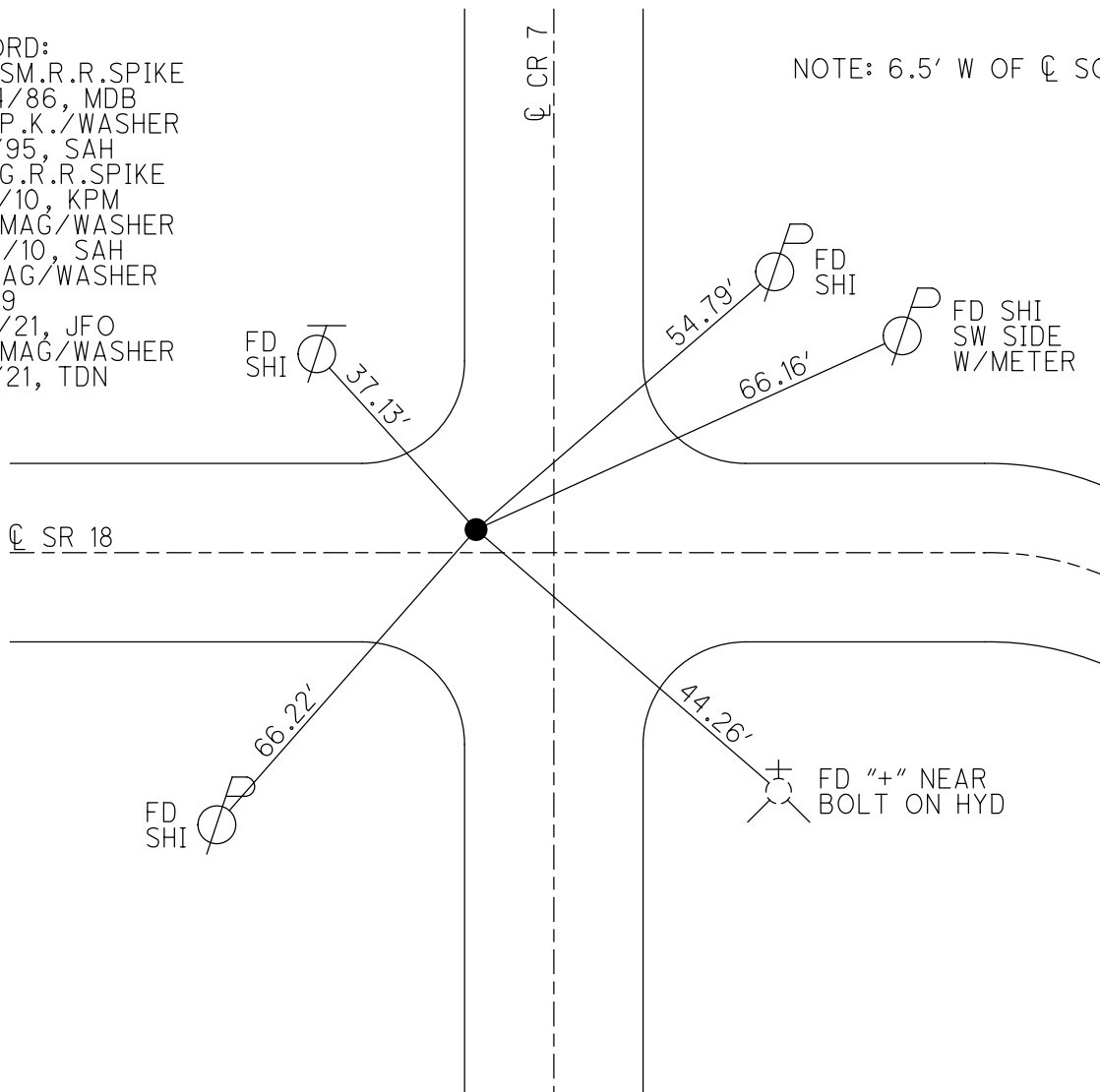
GRID: NORTHING: 571390.569

EASTING: 1556563.934



RECORD:
 SET SM.R.R.SPIKE
 10/14/86, MDB
 SET P.K./WASHER
 9/7/95, SAH
 FD LG.R.R.SPIKE
 5/13/10, KPM
 SET MAG/WASHER
 7/27/10, SAH
 FD MAG/WASHER
 REF29
 5/17/21, JFO
 SET MAG/WASHER
 9/3/21, TDN

NOTE: 6.5' W OF \varnothing SOUTH



FD SHI 37.13'

54.79' FD SHI

66.16' FD SHI SW SIDE W/METER

66.22' FD SHI

44.26' FD "+" NEAR BOLT ON HYD

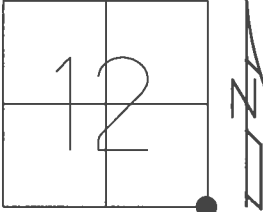
\varnothing SR 18

\varnothing CR 7

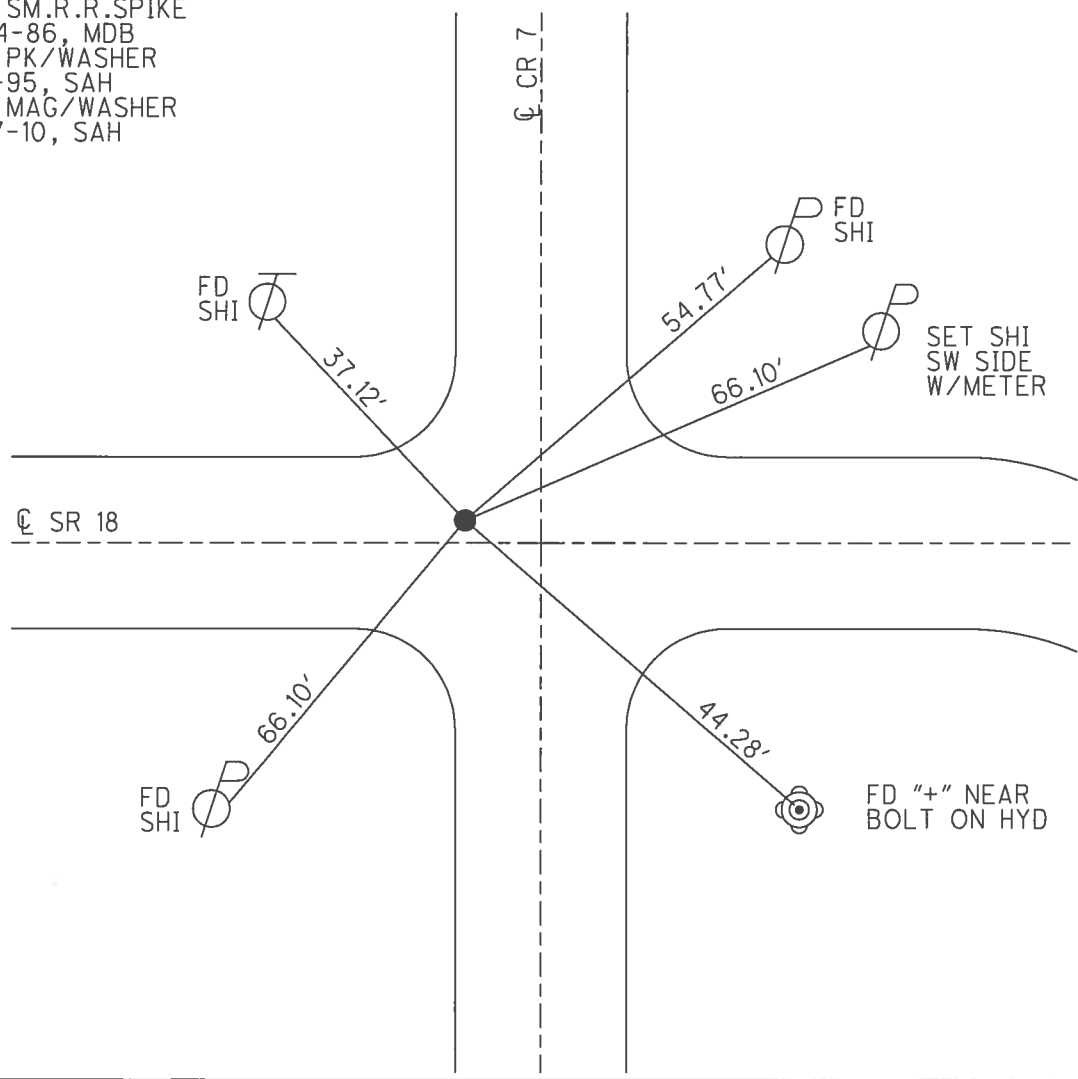
O.D.O.T. DISTRICT 2 SURVEY OFFICE (USE ONLY)

PERSONNEL _____ REFERENCE NO. 29 SHEET 3 OF 12
 NOTES MOSER DATE 5-13-10 ROUTE SR 18
 H.C. MOSER WEATHER CLOUDY COUNTY HENRY
 R.C. GOLDBERG TEMP. 70° TOWNSHIP MARION
 _____ SECTION 12
 _____ T 3 N R 7 E

TYPE MONUMENT LG.R.R.SPIKE
 ON SURFACE - ~~BELOW~~ ON _____
 LEFT - ☉ PAV'T - ~~RIGHT~~ 3', 6.5' W. ☉ S.
8' TO LT EDGE PAVEMENT
 S.L.M. 714+03
 GRID: NORTHING: 571390.602 EASTING: 1556563.906



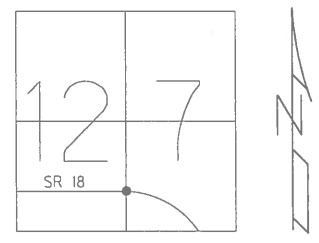
RECORD:
 SET SM.R.R.SPIKE
 10-14-86, MDB
 SET PK/WASHER
 9-7-95, SAH
 SET MAG/WASHER
 7-27-10, SAH



O.D.O.T. DISTRICT 2 SURVEY OFFICE

PERSONNEL _____ REFERENCE NO. 29 SHEET 7 OF 13
 NOTES MOSER DATE 5-13-10 ROUTE SR 18
 H.C. MOSER WEATHER CLOUDY COUNTY HENRY
 R.C. GOLDBERG TEMP. 70° TOWNSHIP MARION
 _____ SECTION 12
 _____ T 3 N R 7 E

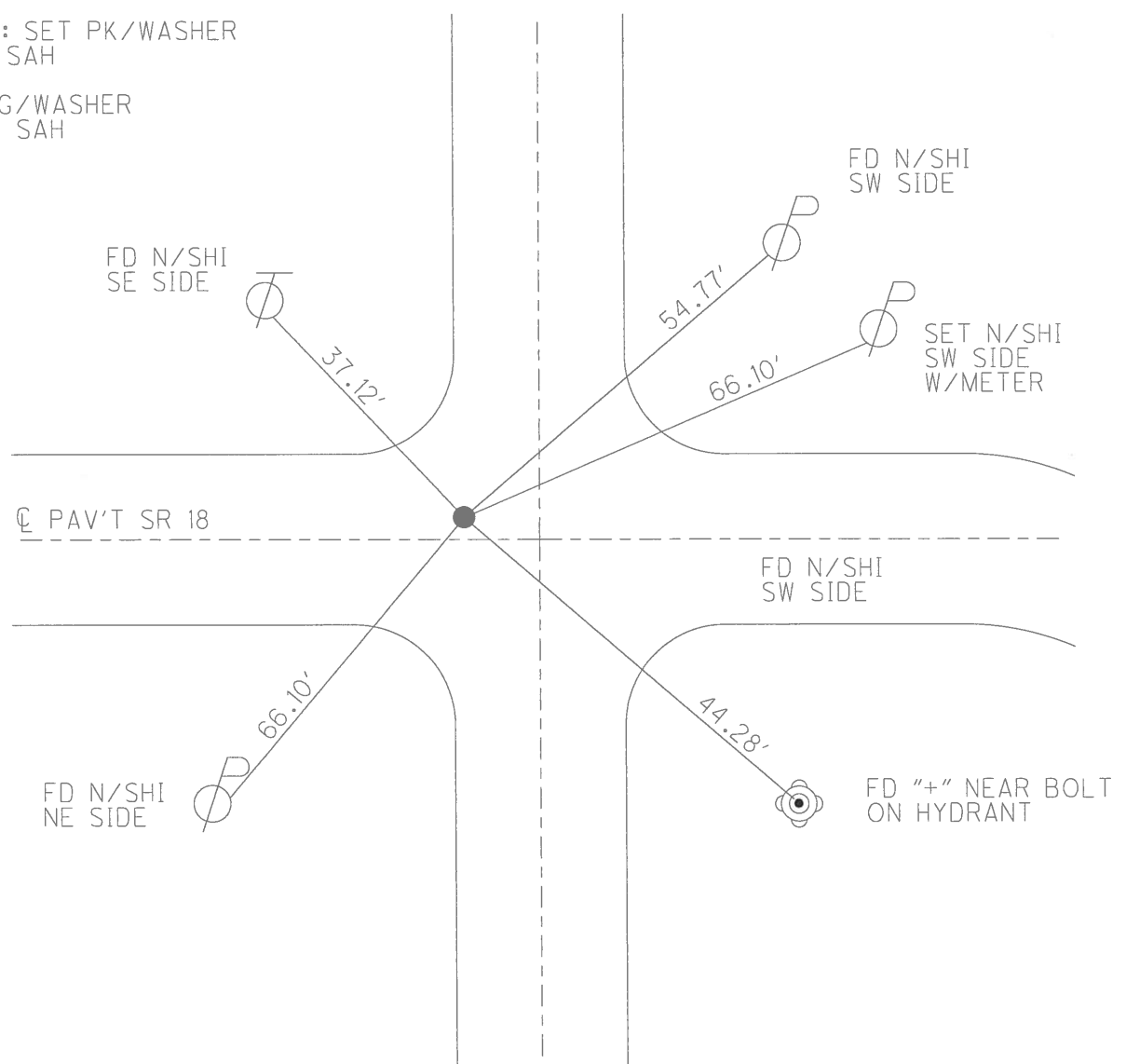
TYPE MONUMENT LG. RR SPK
~~ON SURFACE~~ - BELOW YES
 LEFT - ~~PAV'T~~ - RIGHT 3'
8.0' TOLT. EDGE PAVEMENT
 S.L.M. 714+03 6.5' W OF CR 7 SOUTH
 Grid: Northing: 571390.602 Easting: 1556563.906



RECORD: SET SM RR SPK
 10-14-86 MDB

RECORD: SET PK/WASHER
 9-7-95 SAH

SET MAG/WASHER
 7-27-10 SAH



O.D.O.T. DISTRICT 2 SURVEY OFFICE

PERSONNEL

REFERENCE NO. 29

SHEET 7 OF 13

NOTES HUSS

H.C. VANDUSEN

DATE 6-7-95

ROUTE SR-18

R.C. MOSEER

WEATHER SUNNY

COUNTY Henny

TEMP. 80°

TOWNSHIP Marion-Bartlow

SECTION 12-7

T 3 N R 7 E
8 E

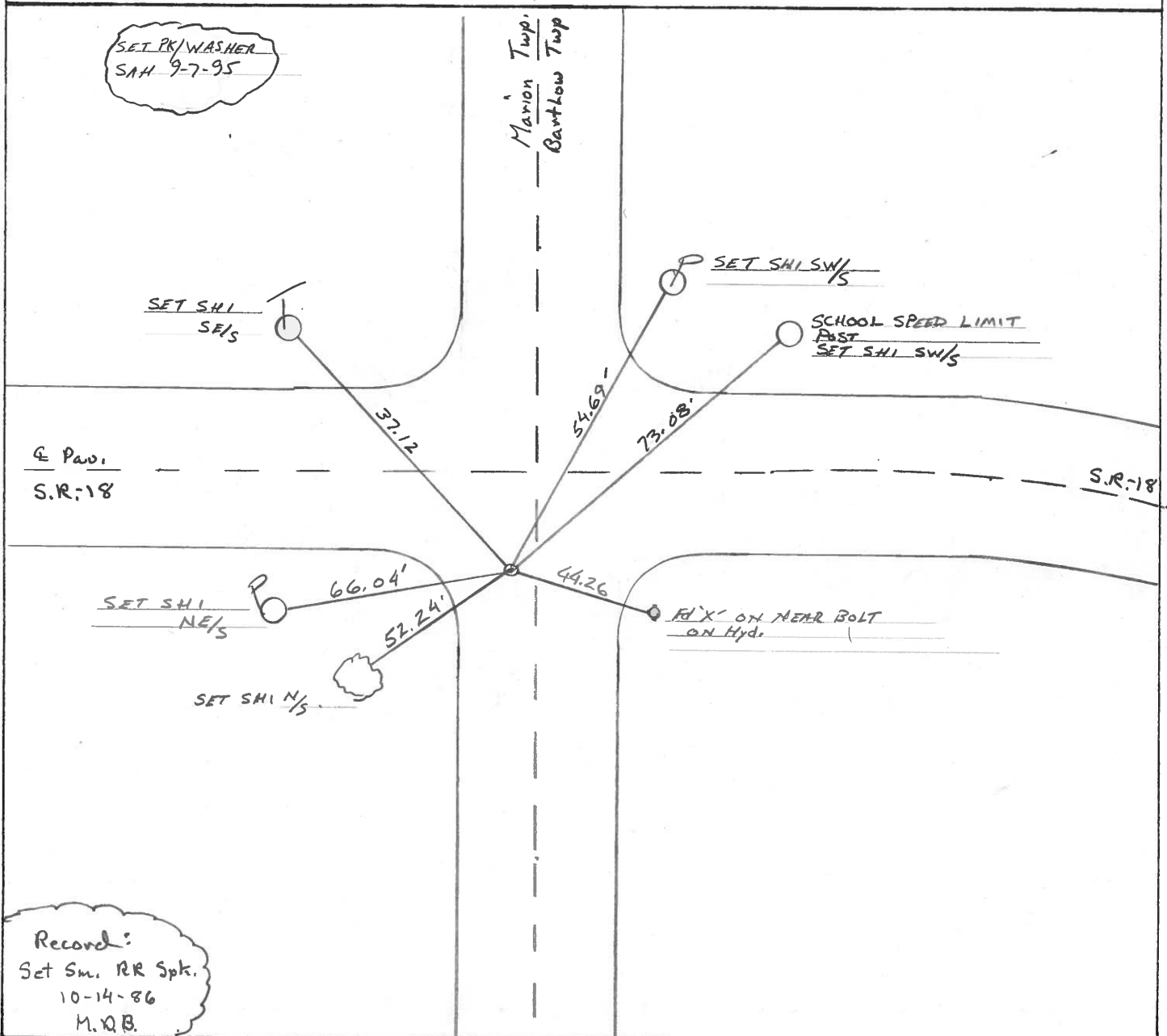
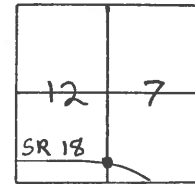
TYPE MONUMENT Lg. RR SPIKE

ON SURFACE - ~~BELOW~~ YES

LEFT- & PAV'T. - ~~RIGHT~~ 3'

8' TO LT EDGE PAVEMENT

S.L.M. 714+03 G.S W OF Co. Rd. "7" S



O.D.O.T. DISTRICT 2 SURVEY OFFICE

PERSONNEL _____

REFERENCE NO. 29

SHEET _____ OF _____

NOTES BARNHISEL

H.C. Loehrke

R.C. SOCKMAN

DATE Aug 4, 1986

WEATHER SUNNY

TEMP. +84.0

ROUTE SR 18

COUNTY HENRY

TOWNSHIP MARION-BARTLOW

SECTION 12 - 7

T.3 N R. 7 E. 8 OF 8

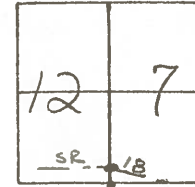
TYPE MONUMENT 1g RR Spk

ON SURFACE - ~~BELOW~~ yes

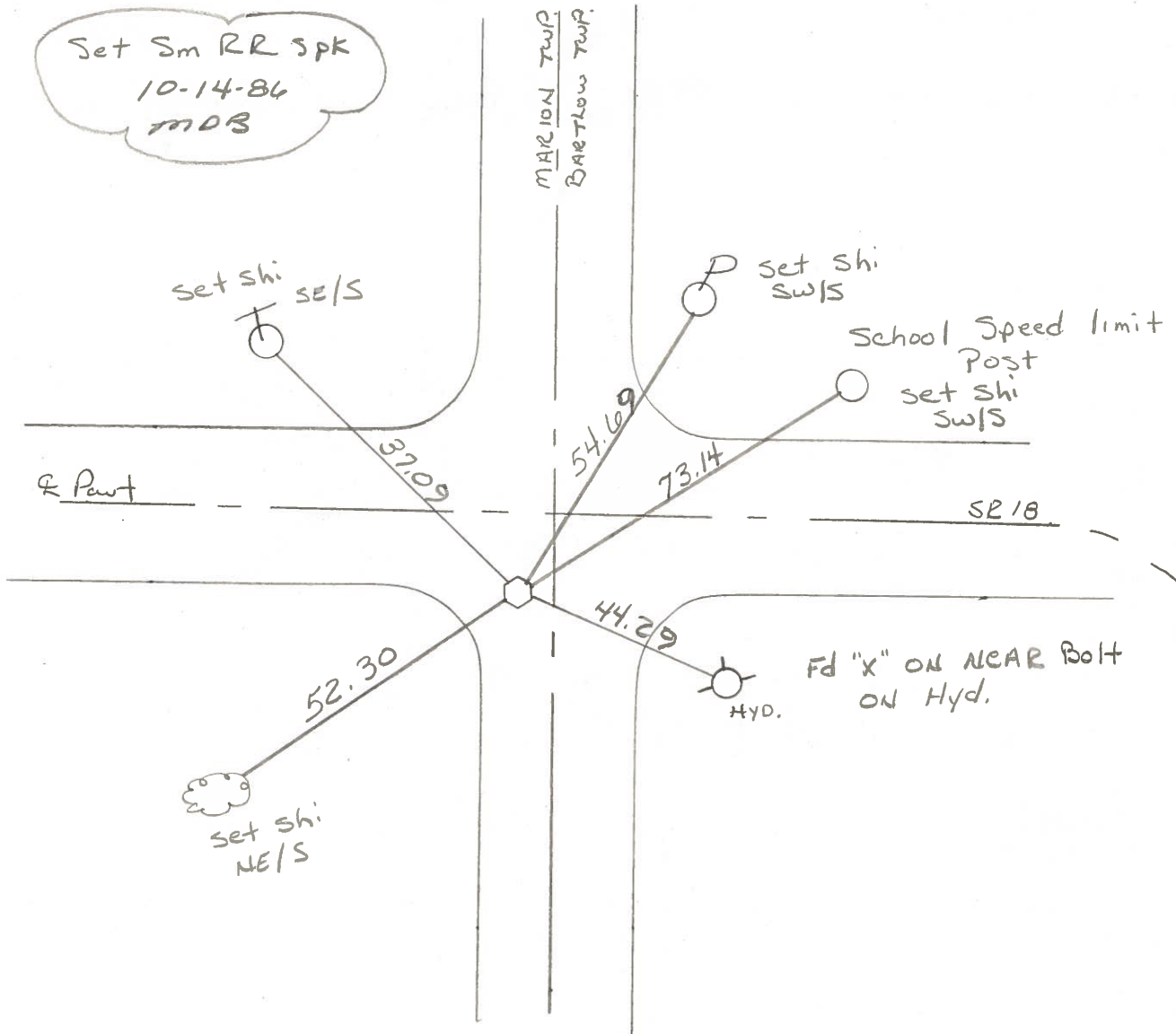
LEFT- & PAV'T. - ~~RIGHT~~ 3'

- TO - EDGE PAVEMENT

S.L.M. 713 + 60 6.5 W of Co Rd "7" S.

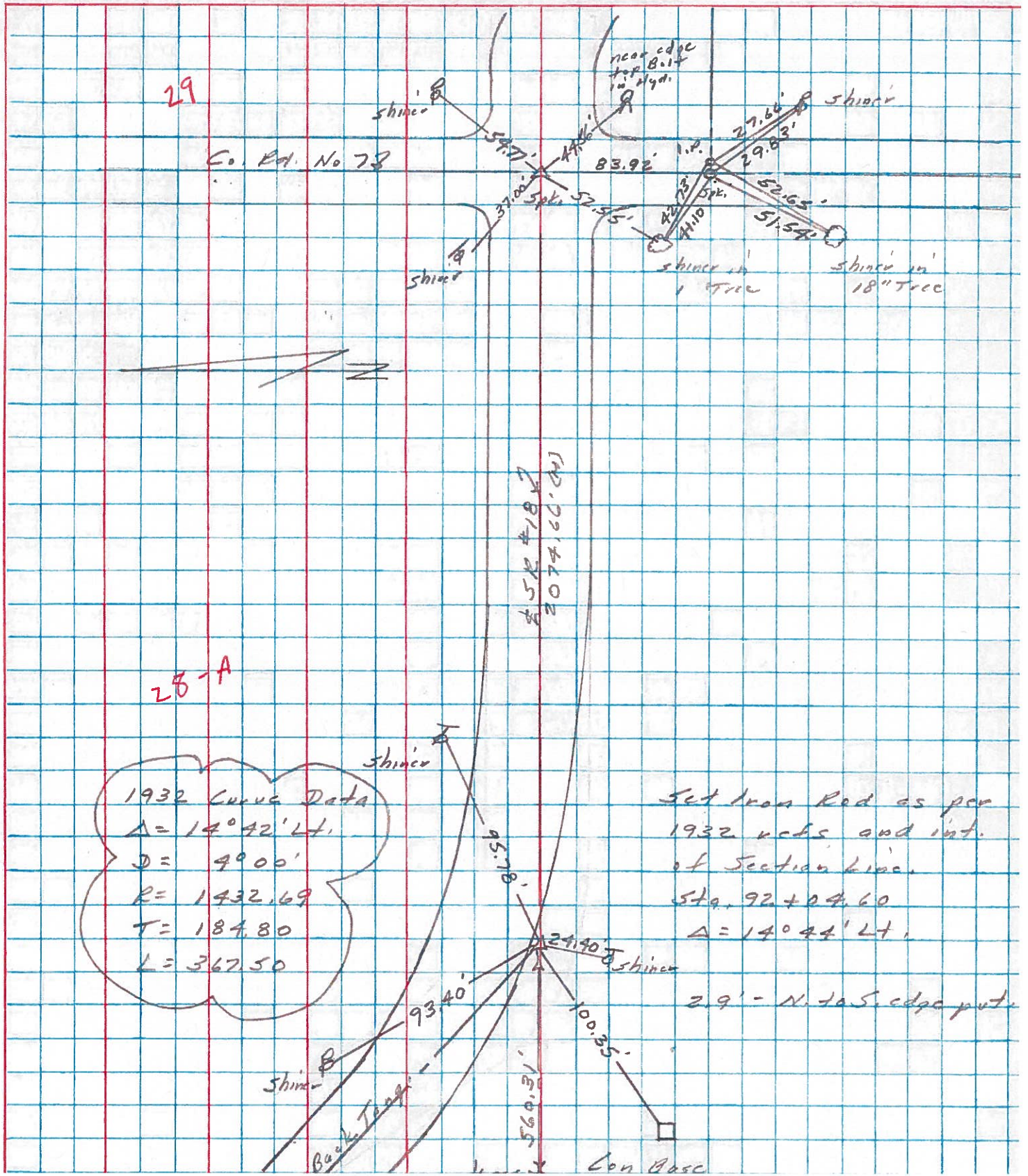


Set Sm RR Spk
10-14-86
MDS



PERSONNEL	TITLE	PERSONNEL	TITLE	COUNTY	DATE	WEATHER	TEMP.
Stone				Henry	23 May 79	Clear	65°
Deano				S. R. #18			
Curtis				SEC. Marion Twp.			
Michalak							

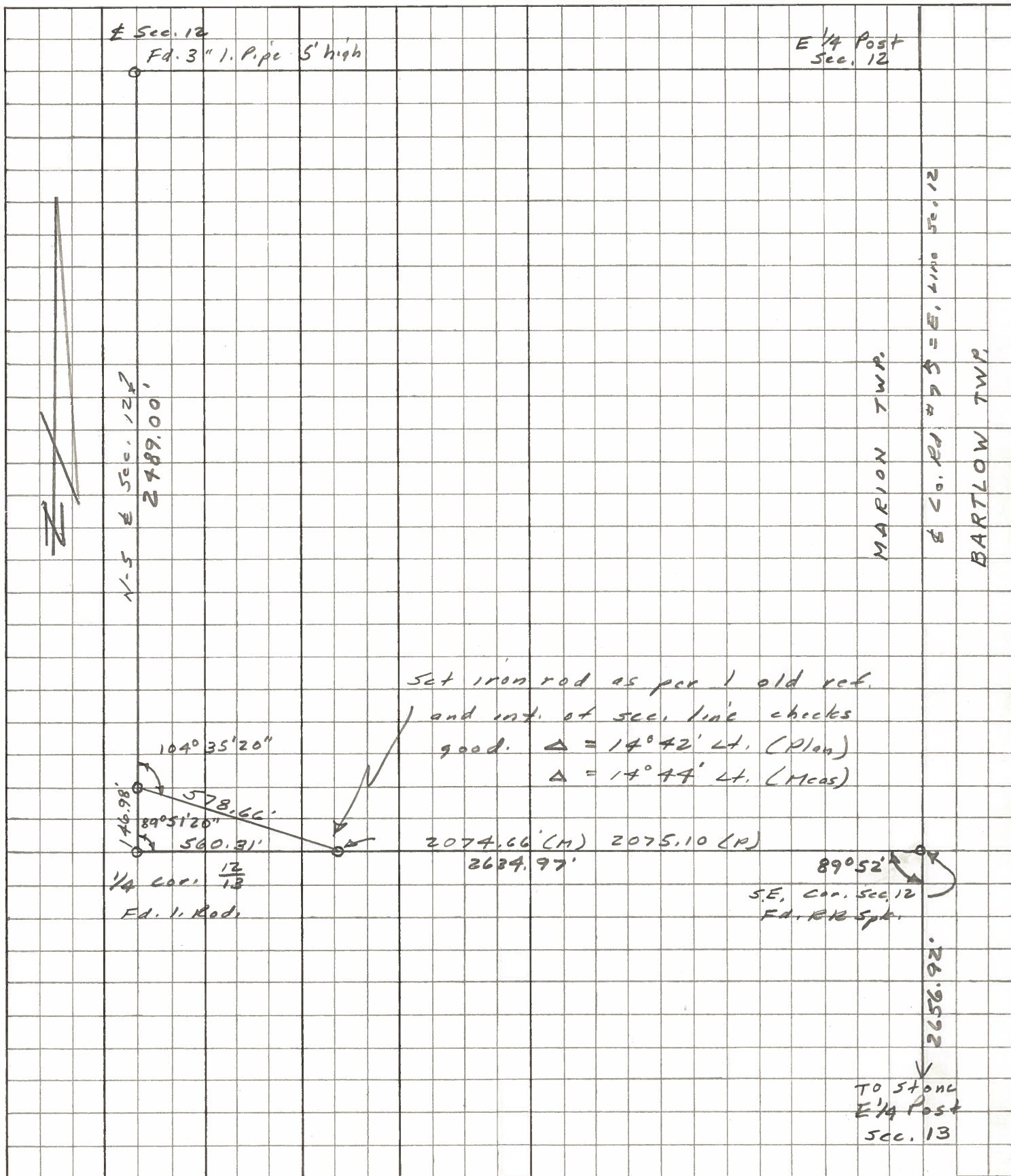
DESCRIPTION Refs. to Control Points JOB NO. 02999(0)



PERSONNEL	TITLE	PERSONNEL	TITLE
Stone			
Michalak			
Dennis			
Curtis			

COUNTY Henry DATE 23 April 74
 S. R. #18 WEATHER Cloudy
 SEC. Marion Twp. TEMP. 45°

DESCRIPTION Alignment JOB NO. 02799 (e)



PERSONNEL TITLE PERSONNEL TITLE

Stone
 Michalak
 Deane
 Curtis

COUNTY Henry DATE 8 May 79

S. R. #18 WEATHER Cool

SEC. Bartlow Twp TEMP. 57°

DESCRIPTION

Alignment

JOB NO. 02999(10)

LEFT

CENTER LINE

RIGHT

