

O.D.O.T. DISTRICT 2 SURVEY OFFICE (USE ONLY)

PERSONNEL

REFERENCE NO. 30

SHEET 6 OF 13

NOTES AUBLE

DATE 7/7/23

ROUTE SR 18

H.C. AUBLE

WEATHER CLEAR

COUNTY HENRY

R.C. RHOADES

TEMP. 76°

TOWNSHIP BARTLOW

DWG BY RHOADES

PID R/W

SECTION 7

T 3 N R 8 E

TYPE MONUMENT MAG/WASHER

ON SURFACE - ~~BELOW~~ ON

OFFSET Q PAVEMENT 0.6' LT : ~~RT~~

8.7' TO LT EDGE PAVEMENT

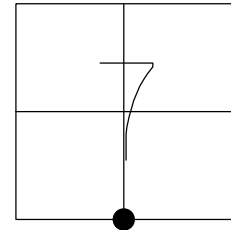
STATION: 741+02

HORZ.DATUM: NAD83 2011

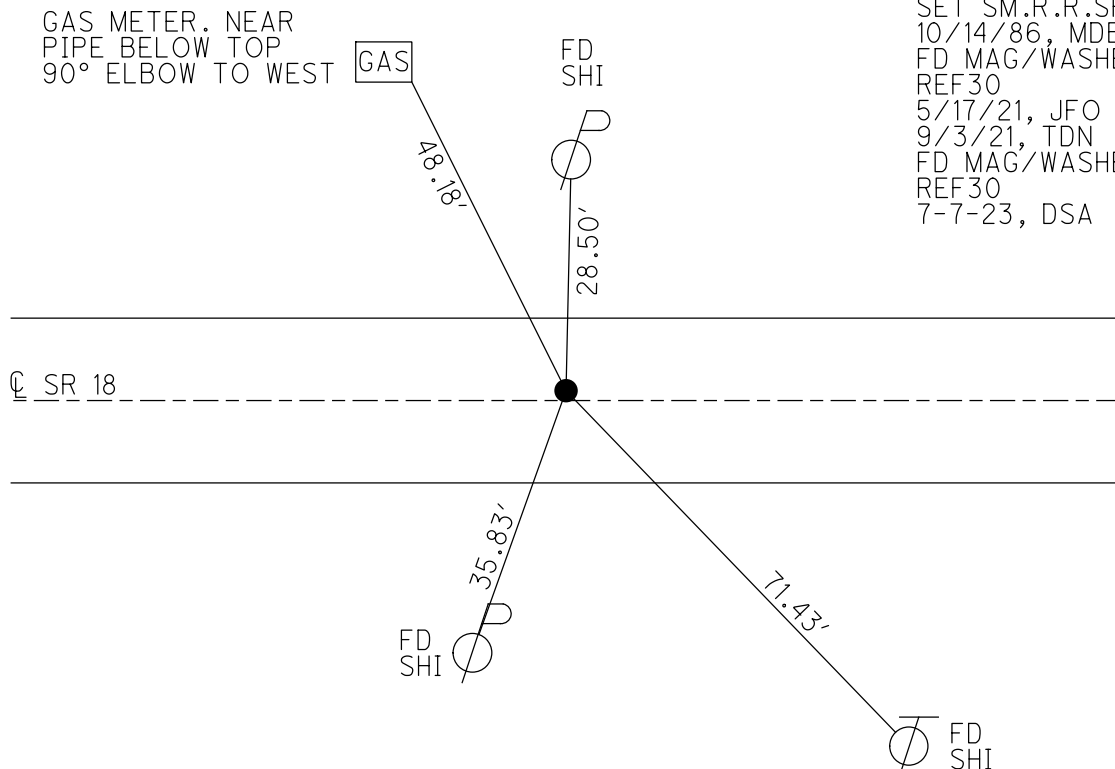
GEOID: NAVD88 2018

GRID: NORTHING: 571290.170

EASTING: 1559255.088



RECORD:
 FD 1/2" IPIN
 10/8/74, IRS
 SET P.K./WASHER
 9/7/95, SAH
 FD P.K./WASHER
 5/13/10, KPM
 SET MAG/WASHER
 7/27/10, SAH
 SET SM.R.R.SPIKE
 10/14/86, MDB
 FD MAG/WASHER
 REF30
 5/17/21, JFO
 9/3/21, TDN
 FD MAG/WASHER
 REF30
 7-7-23, DSA



O.D.O.T. DISTRICT 2 SURVEY OFFICE (USE ONLY)

PERSONNEL

REFERENCE NO. 30

SHEET 5 OF 12

NOTES AUBLE DATE 5/17/21
 H.C. NIESE WEATHER CLOUDY
 R.C. O'DONNELL TEMP. 68°

ROUTE SR 18
 COUNTY HENRY
 TOWNSHIP BARTLOW
 SECTION 7

DWG BY NIESE PID PAVETRAIN

T 3 N R 8 E

TYPE MONUMENT MAG/WASHER

ON SURFACE - ~~BELOW~~ ON

OFFSET \varnothing PAVEMENT 0.6' LT : ~~RT~~

8.7' TO LT EDGE PAVEMENT

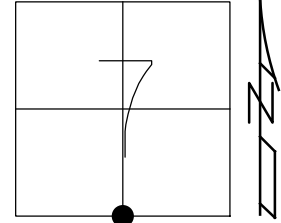
STATION: 741+02

HORIZ.DATUM: NAD83(2011)

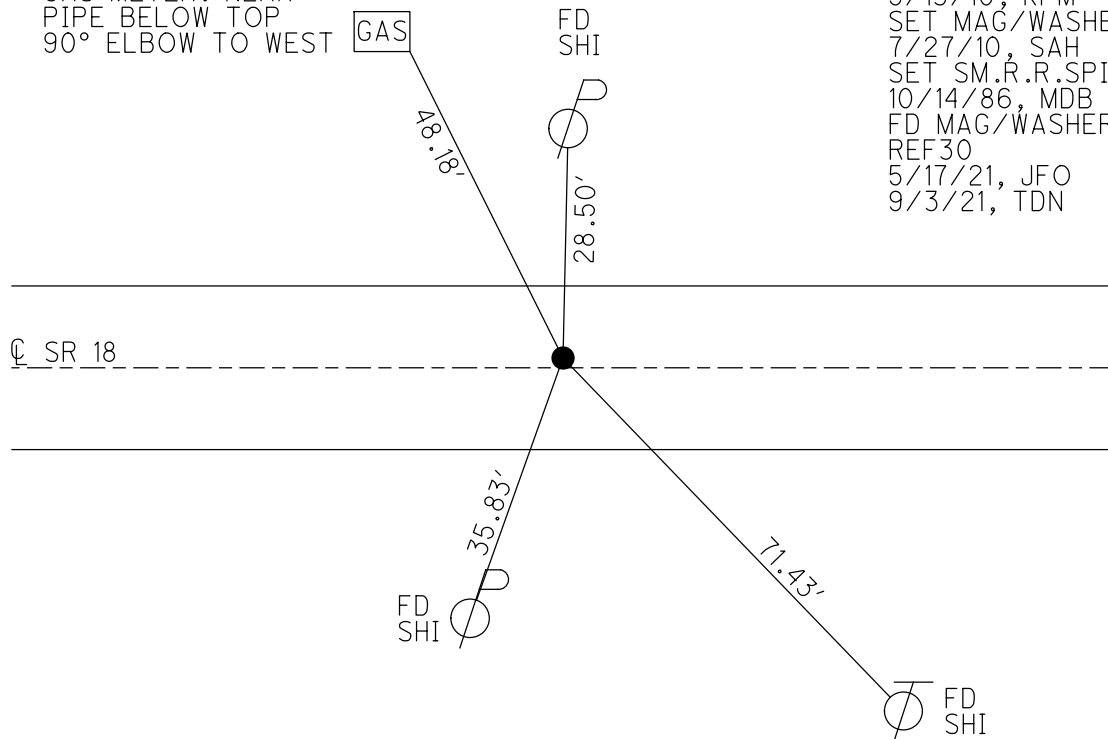
GEOID: NAVD88 2012A

GRID: NORTHING: 571290.281

EASTING: 1559255.064



GAS METER. NEAR
 PIPE BELOW TOP
 90° ELBOW TO WEST

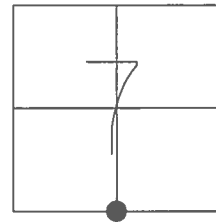


RECORD:
 FD IPIN
 SET P.K./WASHER
 9/7/95, SAH
 FD P.K./WASHER
 5/13/10, KPM
 SET MAG/WASHER
 7/27/10, SAH
 SET SM.R.R.SPIKE
 10/14/86, MDB
 FD MAG/WASHER
 REF30
 5/17/21, JFO
 9/3/21, TDN

O.D.O.T. DISTRICT 2 SURVEY OFFICE (USE ONLY)

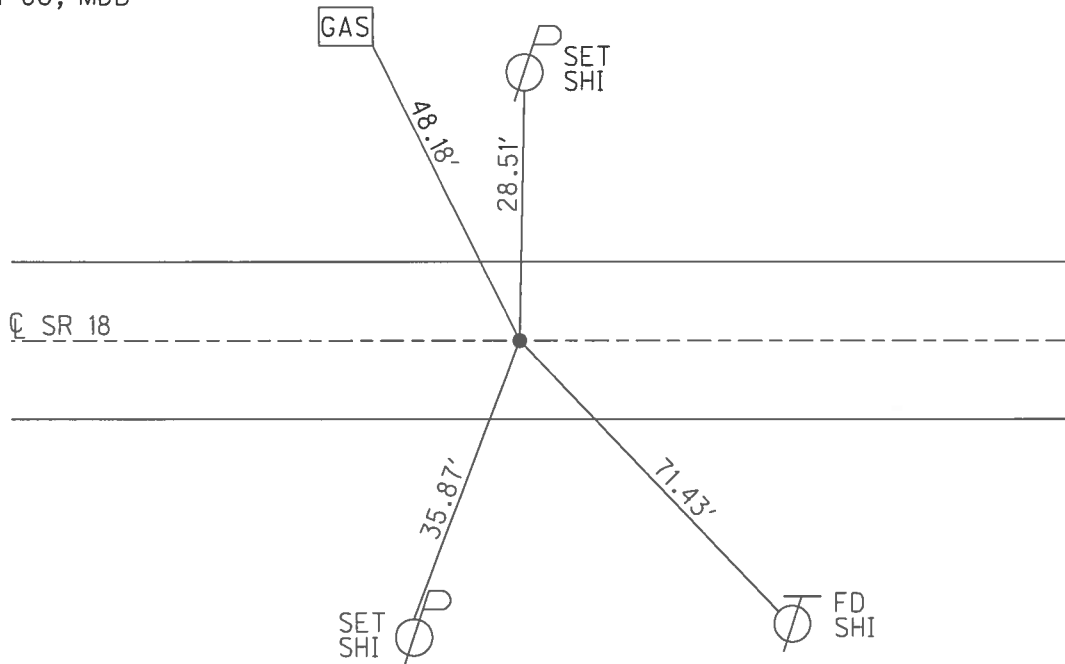
PERSONNEL _____ REFERENCE NO. 30 SHEET 5 OF 12
 NOTES MOSER DATE 5-13-10 ROUTE SR 18
 H.C. MOSER WEATHER CLOUDY COUNTY HENRY
 R.C. GOLDBERG TEMP. 70° TOWNSHIP BARTLOW
 SECTION 7
 T 3 N R 8 E

TYPE MONUMENT P.K./WASHER
 ON SURFACE - ~~BELOW~~ ON
 LEFT - ☉ PAV'T - ~~RIGHT~~ 0.6'
8.7' TO LT EDGE PAVEMENT
 S.L.M. 741+02
 GRID: NORTHING: 571290.283 EASTING: 1559255.033



RECORD:
 FD IPIN
 SET P.K./WASHER
 9-7-95, SAH
 SET MAG/WASHER
 7-27-10, SAH
 SET SM.R.R.SPIKE
 10-14-86, MDB

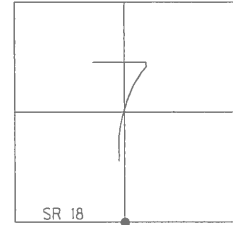
GAS METER. NEAR
 PIPE BELOW TOP
 90° ELBOW TO WEST



O.D.O.T. DISTRICT 2 SURVEY OFFICE

PERSONNEL	REFERENCE NO. <u>30</u>	SHEET <u>9</u> OF <u>13</u>
NOTES <u>MOSER</u>	DATE <u>5-13-10</u>	ROUTE <u>SR 18</u>
H.C. <u>MOSER</u>	WEATHER <u>CLOUDY</u>	COUNTY <u>HENRY</u>
R.C. <u>GOLDBERG</u>	TEMP. <u>70°</u>	TOWNSHIP <u>BARTLOW</u>
		SECTION <u>7</u>
		T <u>3</u> N R <u>8</u> E

TYPE MONUMENT PK & WASHER
 ON SURFACE - ~~BELOW~~ YES
 LEFT - ~~C PAV'T~~ - RIGHT 0.6'
8.7' TO LT. EDGE PAVEMENT
 S.L.M. 741+02
 Grid: Northing: 571290.283 Easting: 1559255.033



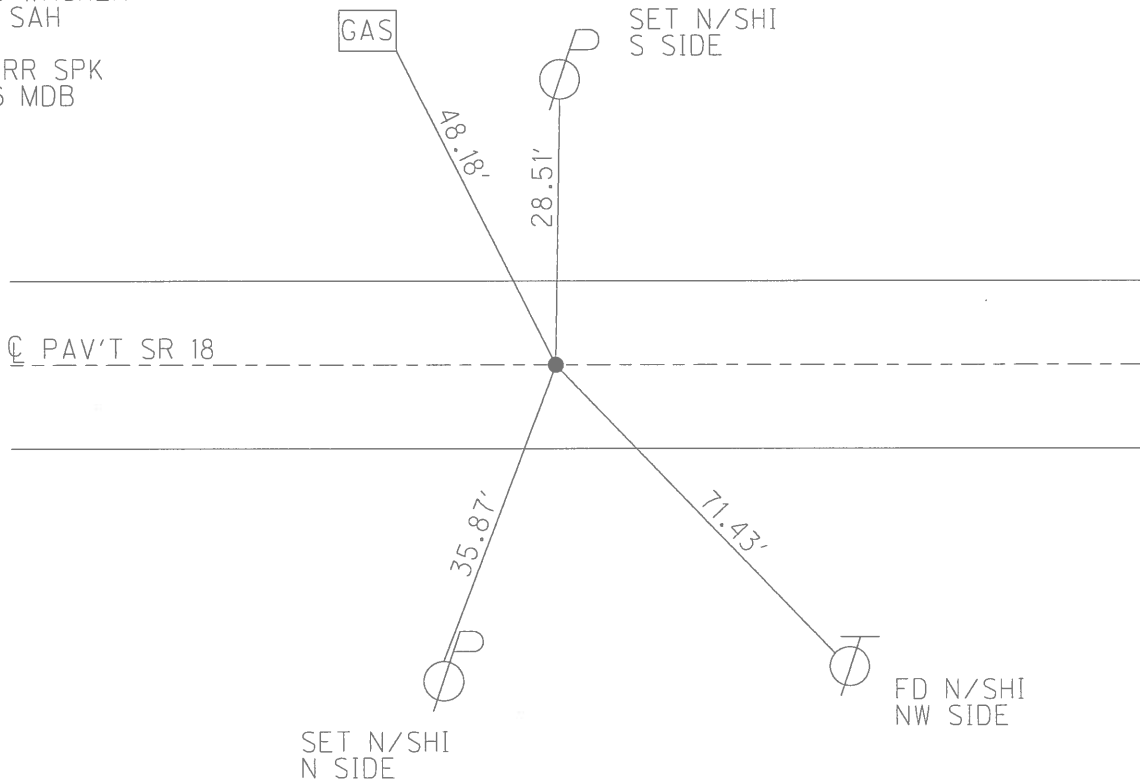
RECORD:
 FD 1/2: IRON PIN
 SET FROM OLD REF.
 TO SHED

SET PK WASHER
 9-7-95 SAH

SET MAG WASHER
 7-27-10 SAH

SET SM RR SPK
 10-14-86 MDB

GAS METER. NEAR
 PIPE BELOW TOP
 90° ELBOW TO WEST



O.D.O.T. DISTRICT 2 SURVEY OFFICE

PERSONNEL

REFERENCE NO. 30

SHEET 9 OF 13

NOTES HUSS

H.C. VAN DUSEN

DATE 6-7-95

ROUTE SR-18

R.C. MOSEY

WEATHER SUNNY

COUNTY Henry

TEMP. +80°F

TOWNSHIP Bartlow

SECTION 7

T 3 N R 8 E

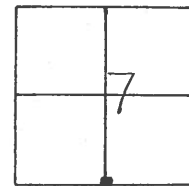
TYPE MONUMENT PK & WASHER

ON SURFACE - ~~BELOW~~ YES

LEFT-~~C~~ PAV'T. - ~~RIGHT~~ 0.6 LT

0.8 TO LT EDGE PAVEMENT

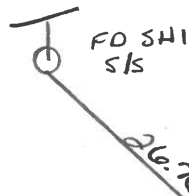
S.L.M. 741+02



SET PK & WASHER

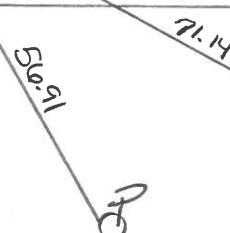
9-7-95

SAH

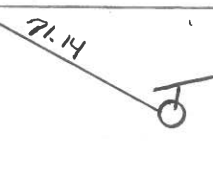


℄ Pav.
SR-18

℄ Pav.
SR-18



FD SH1
NW/S



FD. DUP
N/S

Record:

Set Sm. RR Spk.
10-14-86
MWB

Record:

Fd 1/2" Iron Pin set
from old Ref. to
shed

O.D.O.T. DISTRICT 2 SURVEY OFFICE

PERSONNEL

REFERENCE NO. 30

SHEET OF

NOTES BARNHISEL

H.C. Loehrke

R.C. SOCKMAN

DATE Aug 4, 1986

WEATHER SUNNY

TEMP. +84°

ROUTE SR 18

COUNTY HENRY

TOWNSHIP BARLOW

SECTION 7

T.3 N R 8 E

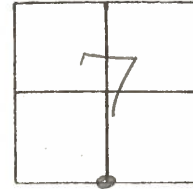
TYPE MONUMENT Sm RR Spk

ON SURFACE - BELOW yes

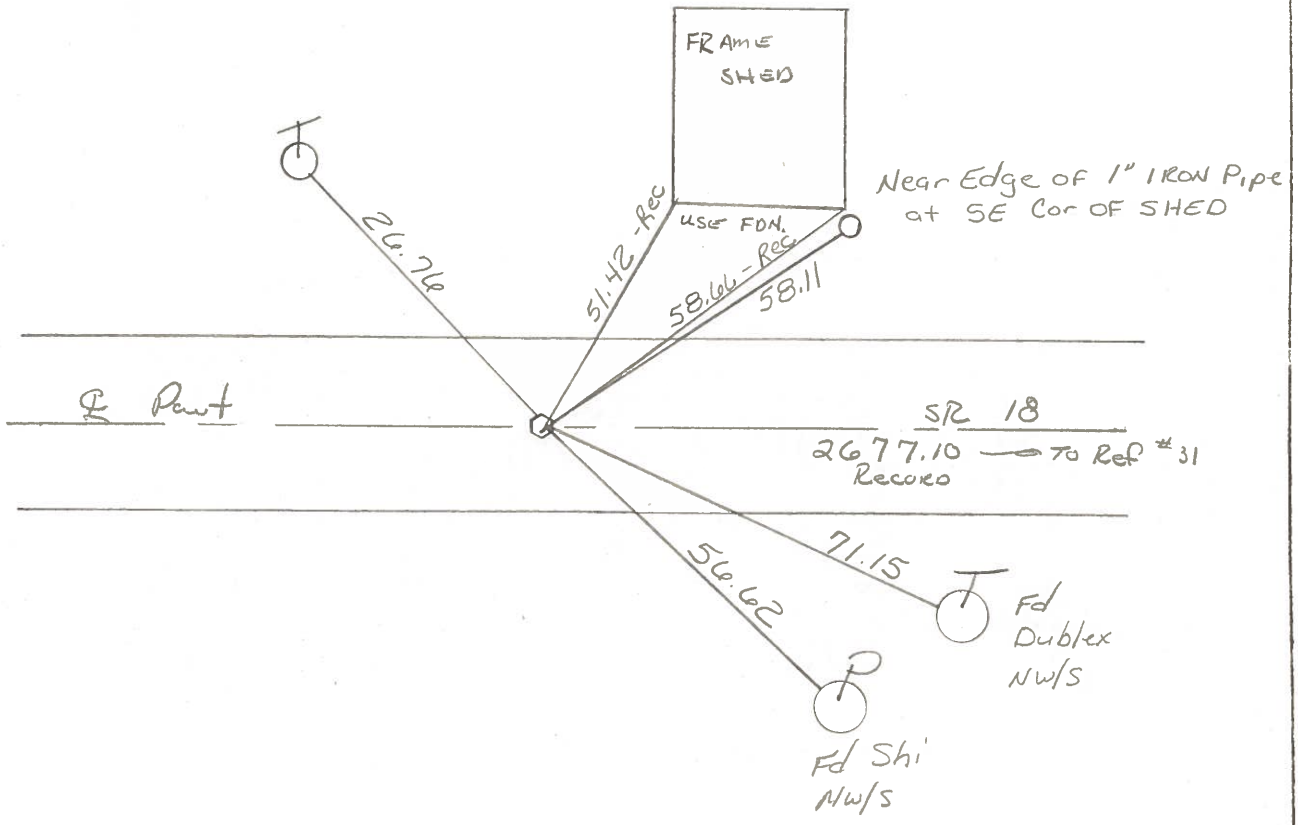
LEFT - & PAV'T. - RIGHT yes

9.0 TO LT EDGE PAVEMENT

S.L.M. 740 + 61



Set Sm RR Spk
10-14-86
MOB



Records!
Fd 1/2" I. Rod set
From old Ref. to shed.

Q.D.O.T. DISTRICT 2 SURVEY OFFICE

SHEET _____ OF _____

County HENRY S.R. 18

Date OCT 13, 1982

Township BARTLOW

Weather Partly Clear

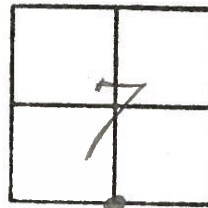
Section 7

Temp. +55°

T3N, R8E

Personnel HOFFMAN
HOUSEHOLDER
LOEHRKE
BARNHISEL

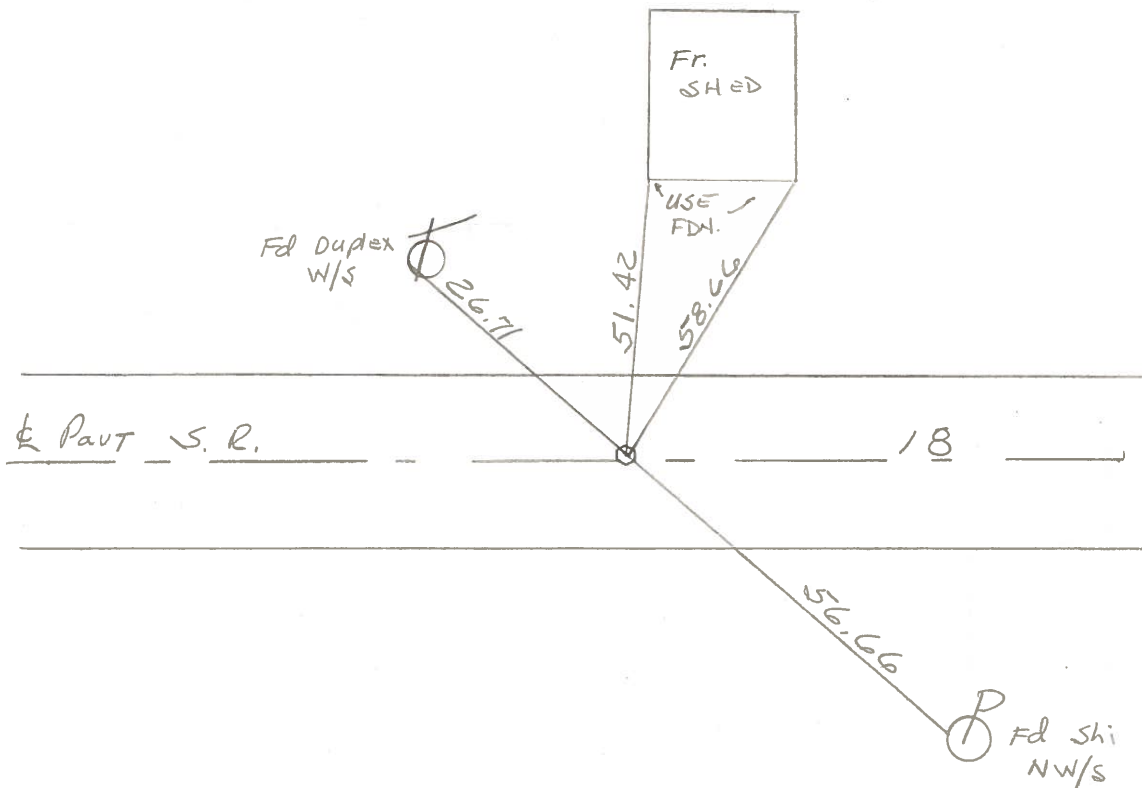
#30



Fd. small R.R. spk @ surface

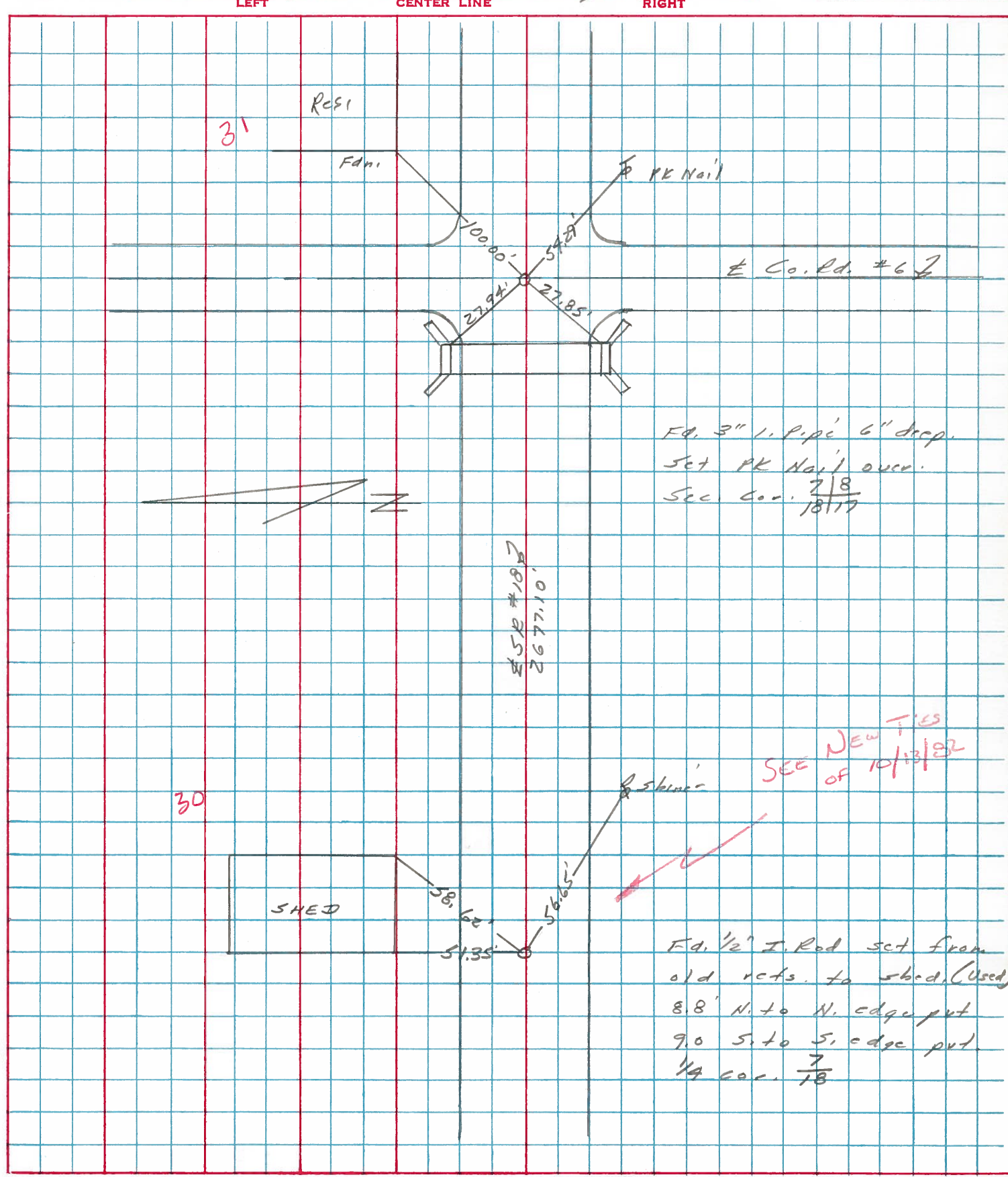
9.0' TO N.E.P.

9.2' TO S.E.P.



PERSONNEL	TITLE	PERSONNEL	TITLE	COUNTY	DATE
Stooge				Henry	8 Oct 74
Michalak				S. R. #18	WEATHER Cool
Deano				SEC. Bottom Top	TEMP. 45°
Curtis					

DESCRIPTION Ref. to Central points JOB NO. _____



PERSONNEL TITLE PERSONNEL TITLE

Stone
 Michalak
 Deane
 Curtis

COUNTY Henry DATE 8 May 79

S. R. #18 WEATHER Cool

SEC. Bartlow Twp TEMP. 57°

DESCRIPTION

Alignment

JOB NO. 02999(10)

LEFT

CENTER LINE

RIGHT

