

O.D.O.T. DISTRICT 2 SURVEY OFFICE (USE ONLY)

PERSONNEL

REFERENCE NO. 31

SHEET 6 OF 12

NOTES AUBLE

DATE 5/17/21

ROUTE SR 18

H.C. NIESE

WEATHER CLOUDY

COUNTY HENRY

R.C. O'DONNELL

TEMP. 63°

TOWNSHIP BARTLOW

SECTION 8

DWG BY NIESE PID PAVETRAIN

T 3 N R 8 E

TYPE MONUMENT MAG/WASHER

ON SURFACE - ~~BELOW~~ ON

OFFSET ☉ PAVEMENT ON LT : RT

8.7' TO LT EDGE PAVEMENT

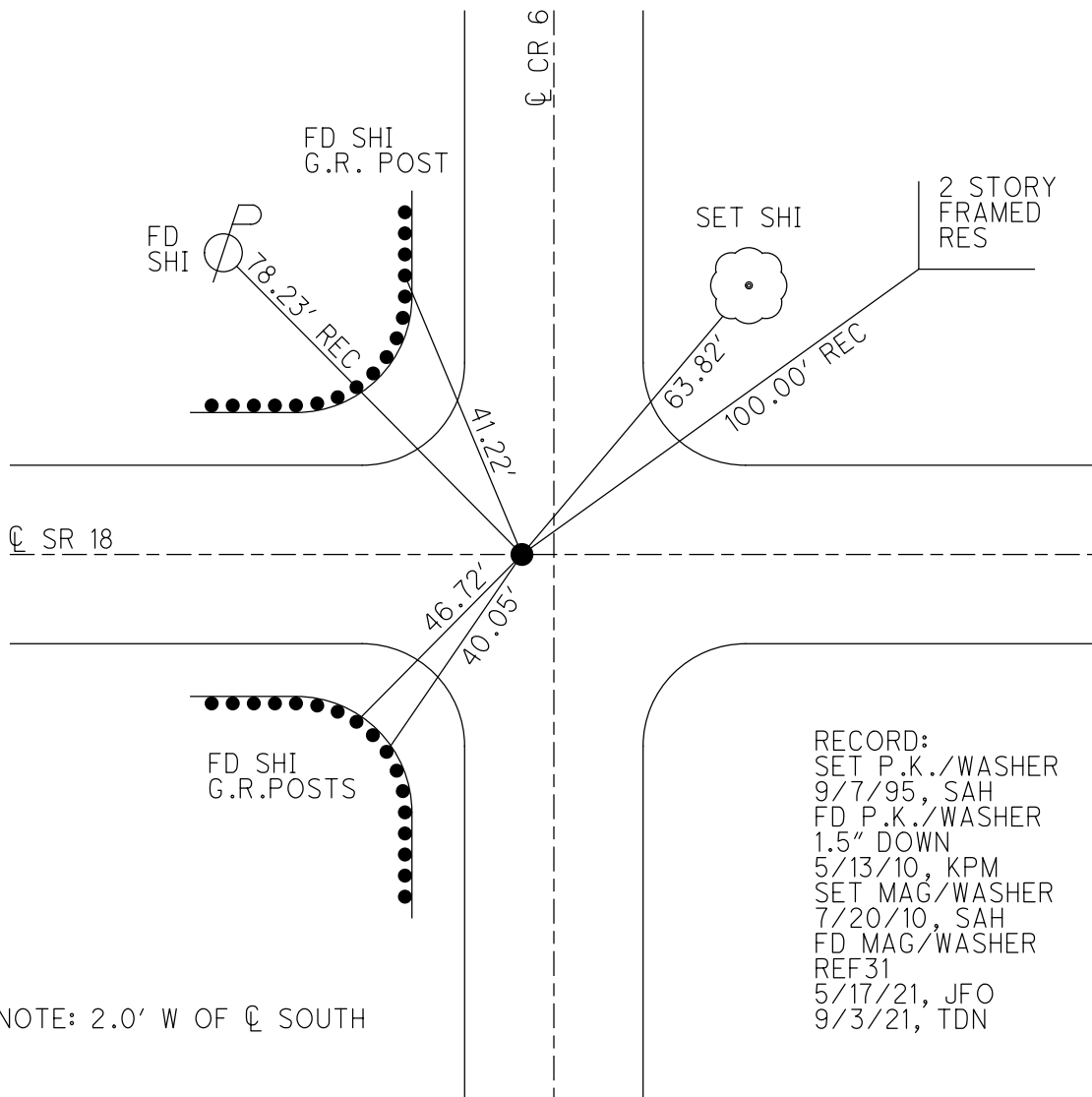
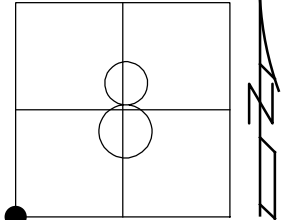
STATION: 767+78.68

HORZ.DATUM: NAD83(2011)

GEOID: NAVD88 2012A

GRID: NORTHING: 571263.786

EASTING: 1561931.527



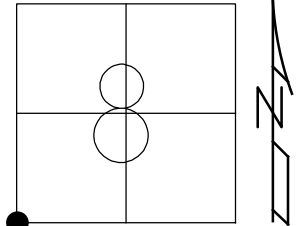
RECORD:
 SET P.K./WASHER
 9/7/95, SAH
 FD P.K./WASHER
 1.5" DOWN
 5/13/10, KPM
 SET MAG/WASHER
 7/20/10, SAH
 FD MAG/WASHER
 REF31
 5/17/21, JFO
 9/3/21, TDN

NOTE: 2.0' W OF ☉ SOUTH

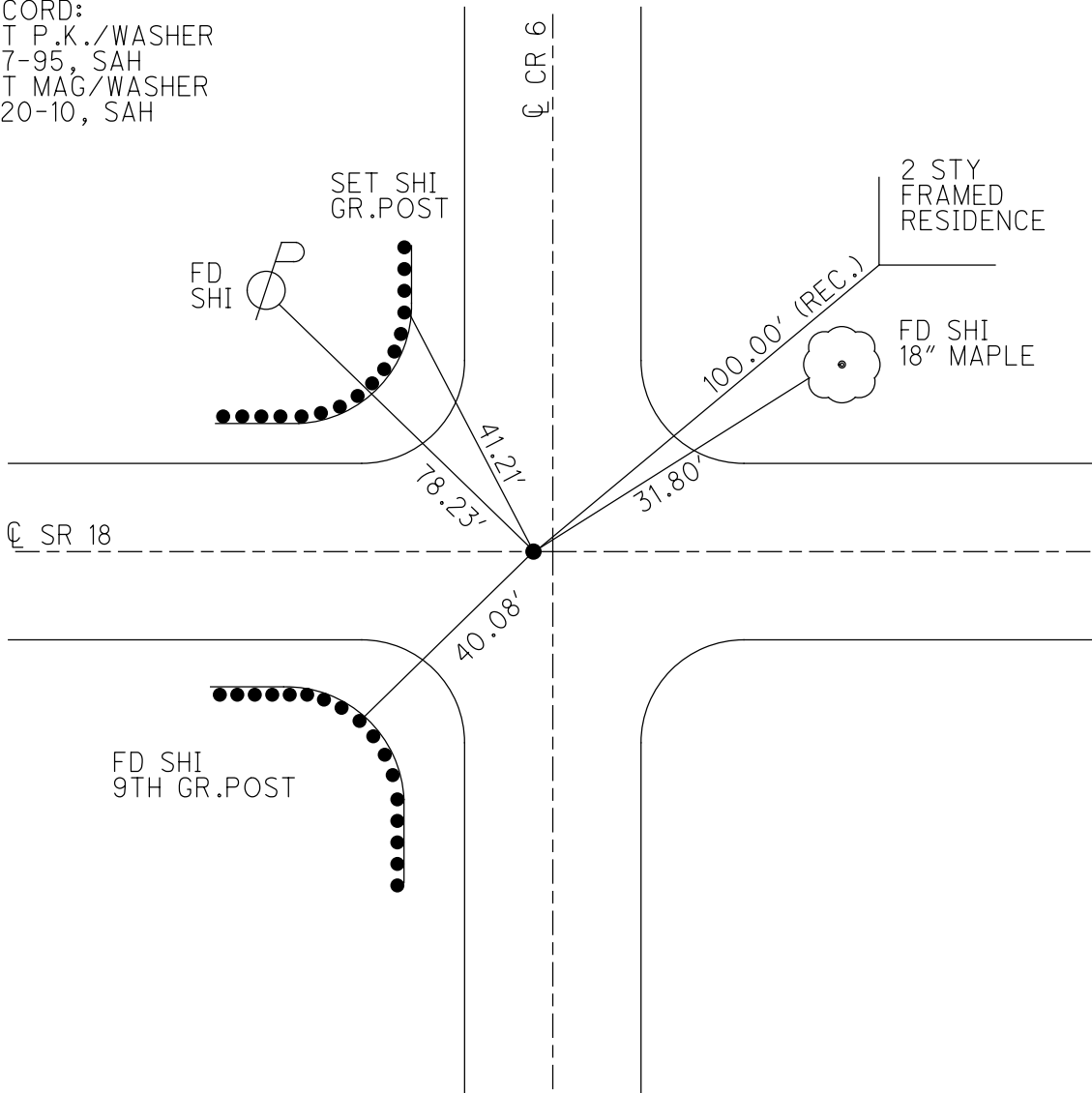
O.D.O.T. DISTRICT 2 SURVEY OFFICE (USE ONLY)

PERSONNEL _____ REFERENCE NO. 31 SHEET 6 OF 12
 NOTES MOSER DATE 5-13-10 ROUTE SR 18
 H.C. MOSER WEATHER CLOUDY COUNTY HENRY
 R.C. GOLDBERG TEMP. 70° TOWNSHIP BARTLOW
 _____ SECTION 8
 _____ T 3 N R 8 E

TYPE MONUMENT P.K./WASHER
~~ON SURFACE~~ - BELOW 1.5"
 LEFT - ☉ PAV'T - RIGHT ON, 2.0' W. OF ☉ S.
8.7' TO LT EDGE PAVEMENT
 S.L.M. 767+78.68
 GRID: NORTHING: 571263.774 EASTING: 1561931.450



RECORD:
 SET P.K./WASHER
 9-7-95, SAH
 SET MAG/WASHER
 7-20-10, SAH



O.D.O.T. DISTRICT 2 SURVEY OFFICE (USE ONLY)

PERSONNEL _____

REFERENCE NO. 31

SHEET 1 OF 3

NOTES CANTERBURY

DATE 06-04-07

ROUTE SR 18

H.C. CANTERBURY

WEATHER SUNNY

COUNTY HENRY

R.C. MIKLOVICK

TEMP. +80°

TOWNSHIP BARTLOW

SECTION 8

T 3 N R 8 E

TYPE MONUMENT FD. PK/WASHER

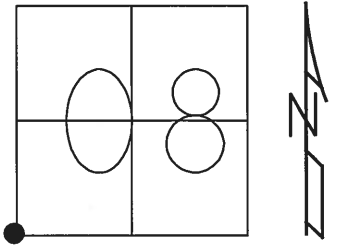
ON SURFACE - ~~BELOW~~ ON SURFACE

LEFT - C PAV'T - RIGHT ON CL.

9.8' TO LT. EDGE PAVEMENT 2' WEST CL. CR.65

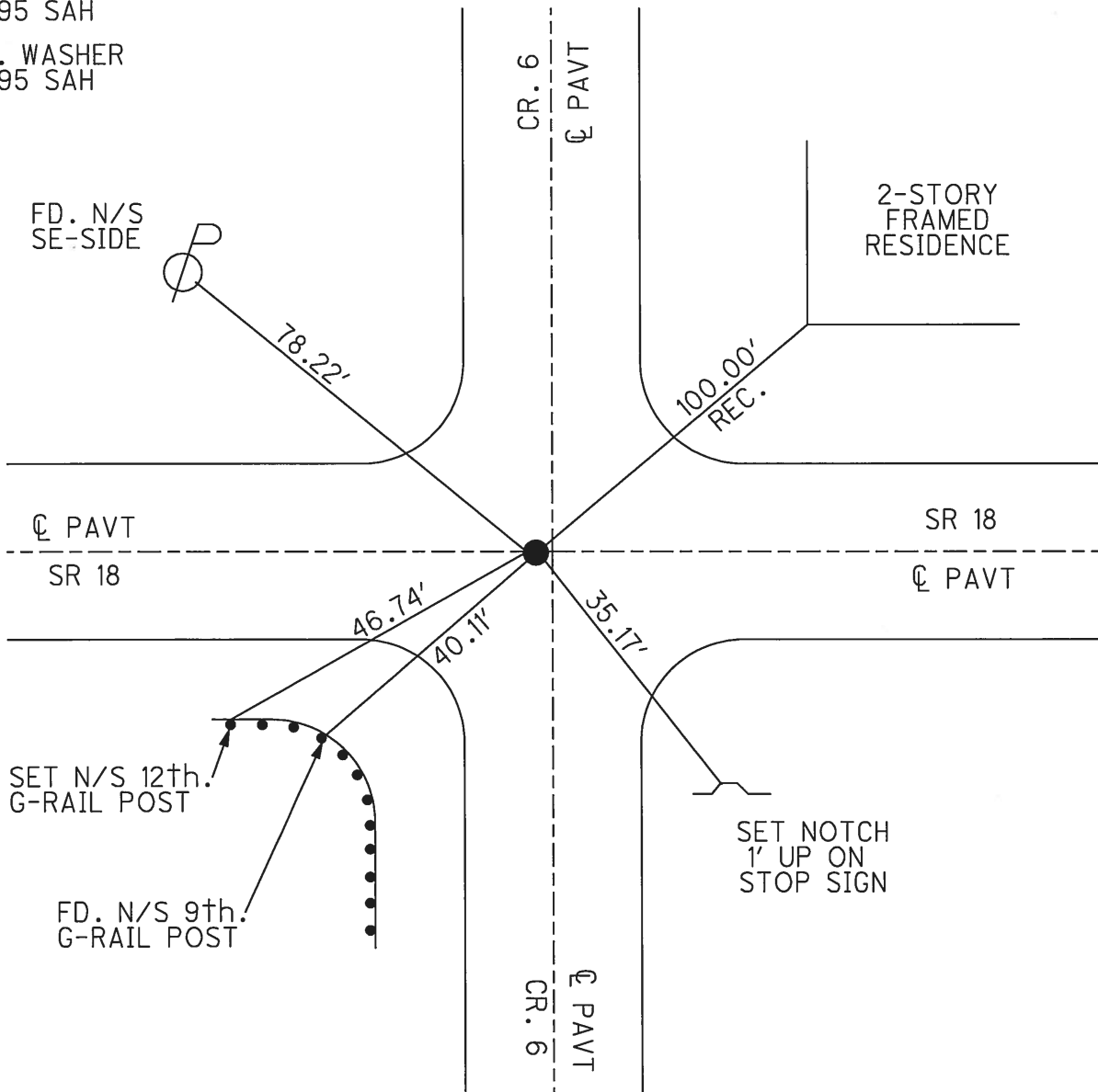
S.L.M. 767+78.6 (SV6)

Grid: Northing: 571263.846 Easting: 1561931.462



FD. PK. WASHER
06-07-95 SAH

SET PK. WASHER
09-07-95 SAH



O.D.O.T. DISTRICT 2 SURVEY OFFICE

PERSONNEL

REFERENCE NO. 31

SHEET 10 OF 13

NOTES HUSS

H.C. VAW DUSEN

DATE 6-7-95

ROUTE SR-18

R.C. MOSER

WEATHER SUNNY

COUNTY Henry

TEMP. +80°F

TOWNSHIP Bantlow

SECTION 8

T 3 N R 8 E

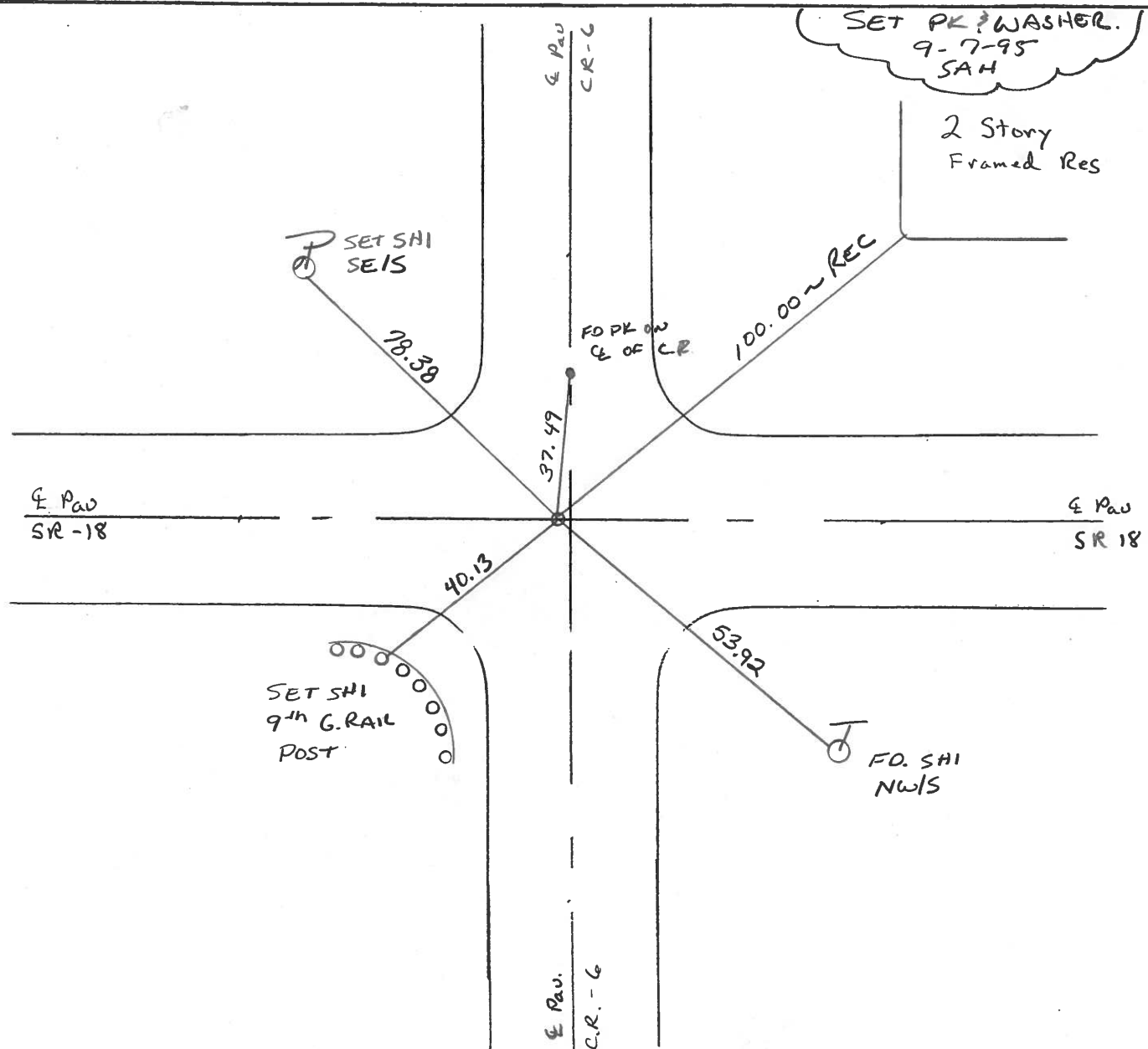
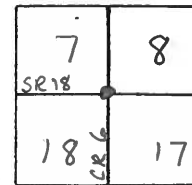
TYPE MONUMENT PK & WASHER

ON SURFACE - BELOW YES

~~LEFT~~ - CL PAV'T. - RIGHT YES

9.8 TO LT. EDGE PAVEMENT

S.L.M. 767+79 2' W. OF CL OF C.R. 6 S.



O.D.O.T. DISTRICT 2 SURVEY OFFICE

PERSONNEL

REFERENCE NO. 31

SHEET OF

NOTES BARNHISEL

H.C. Loehrke

R.C. SOCKMAN

DATE Aug 4, 1986

WEATHER SUNNY

TEMP. +84°

ROUTE SR 18

COUNTY HENRY

TOWNSHIP BARTLOW

SECTION 8

T3 N R 8 E

TYPE MONUMENT Sm RR SPK

ON SURFACE - ~~BELOW~~ yes

LEFT- & PAV'T. - ~~RIGHT~~ yes

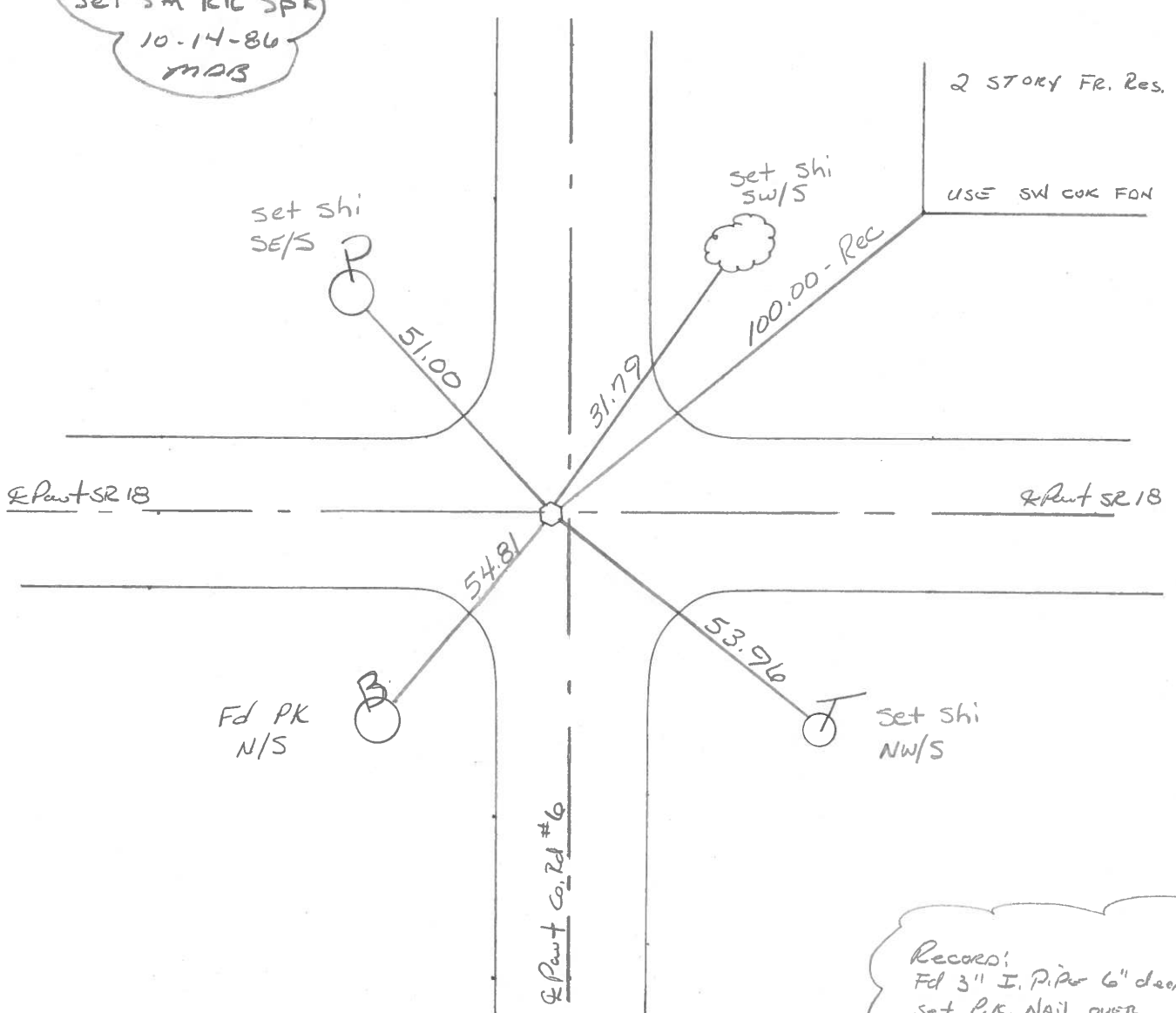
- TO - EDGE PAVEMENT

S.L.M. 767 + 47 1' W of Co Rd #6 S.

7	8
18	17



Set Sm RR SPK
10-14-86
MAB



PERSONNEL TITLE PERSONNEL TITLE

COUNTY Henry DATE 8 Oct 77

Stone

Michalak

Donno

Curtis

S. R. #18

WEATHER Cool

SEC. Bottom Top

TEMP. 95°

DESCRIPTION

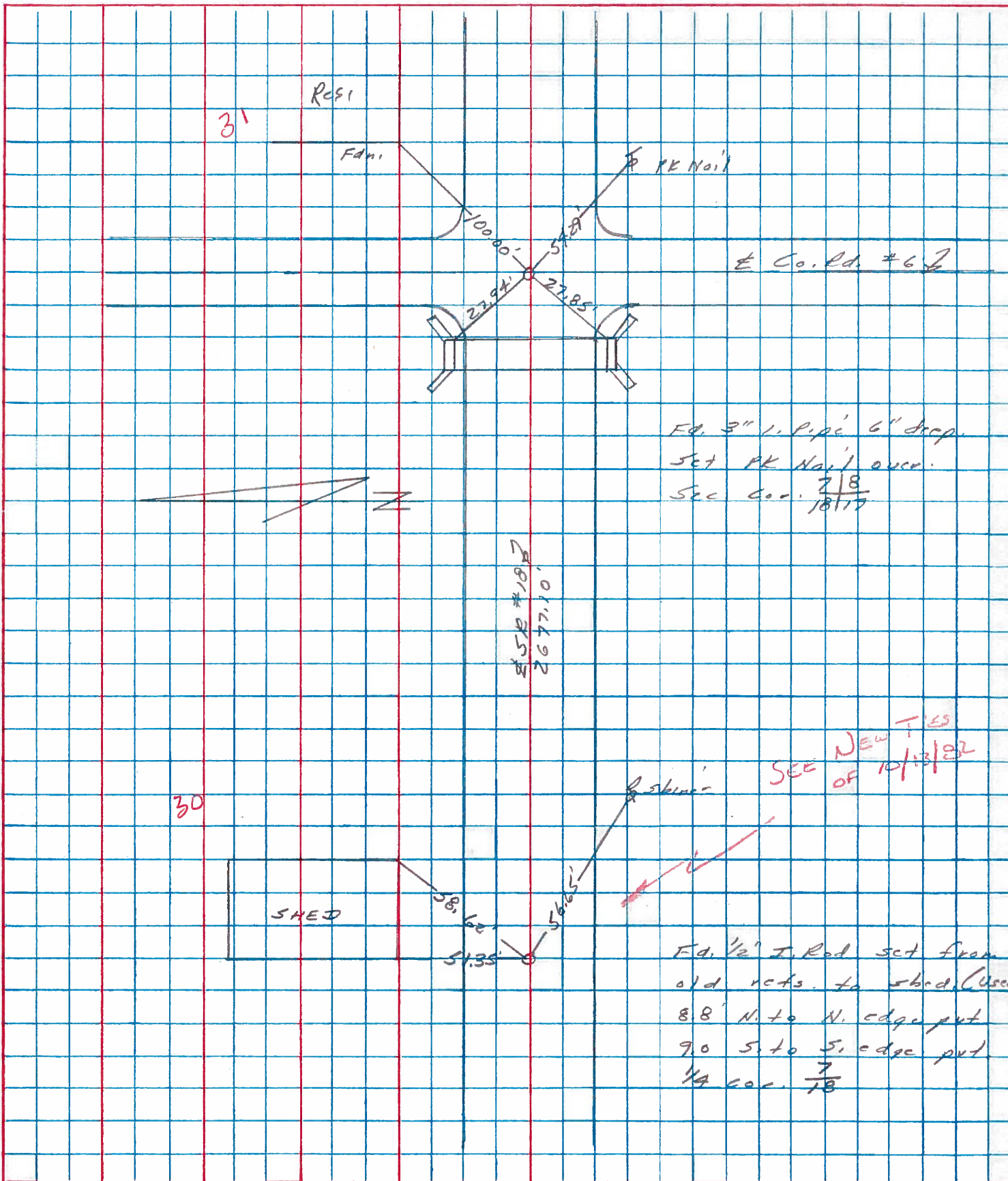
LEFT

CENTER LINE

RIGHT

JOB NO.

Ref. to Central points



± Co. Rd. #62

F.d. 3" I. Pipe 6" deep.
 Set PK Nail over.
 Sec. Cor. $\frac{7}{8}$
 18/17

± 54.29' #18
 267710'

SEE NEW TIES
 OF 10/13/82

F.d. 1/2" I. Rod set from
 old refs. to shed. (Use)
 8.8' N. to N. edge put
 9.0' S. to S. edge put
 1/4 Cor. $\frac{7}{8}$

PERSONNEL TITLE PERSONNEL TITLE

Stone
 Michalak
 Deane
 Curtis

COUNTY Henry DATE 8 May 79

S. R. #18 WEATHER Cool

SEC. Bartlow Twp TEMP. 57°

DESCRIPTION

Alignment

JOB NO. 02999(10)

LEFT

CENTER LINE

RIGHT

