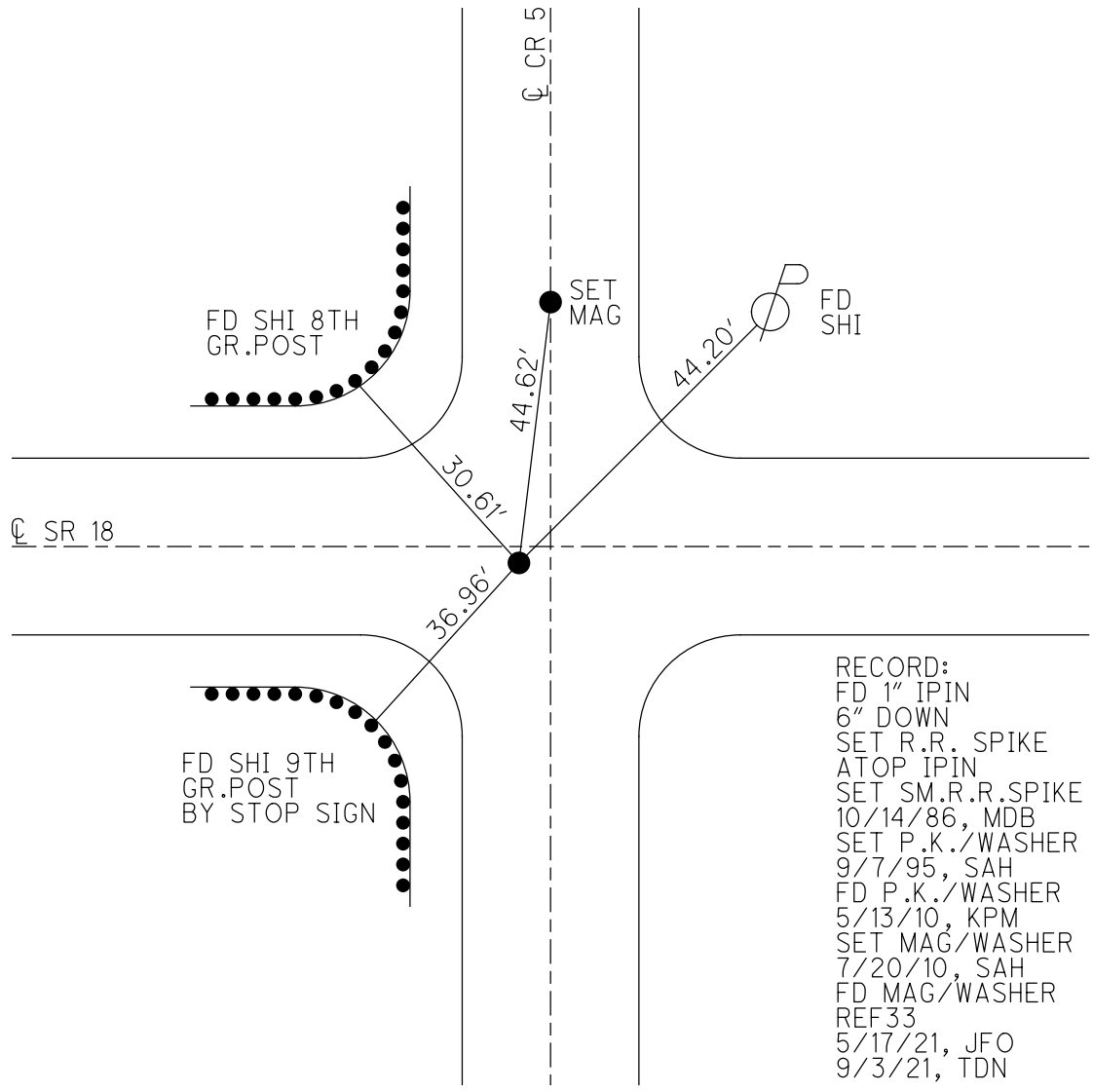
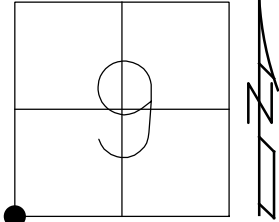


O.D.O.T. DISTRICT 2 SURVEY OFFICE (USE ONLY)

PERSONNEL _____ REFERENCE NO. 33 SHEET 8 OF 12
 NOTES AUBLE DATE 5/17/21 ROUTE SR 18
 H.C. NIESE WEATHER CLOUDY COUNTY HENRY
 R.C. O'DONNELL TEMP. 63° TOWNSHIP BARTLOW
 DWG BY NIESE PID PAVETRAN SECTION 9
 T 3 N R 8 E

TYPE MONUMENT MAG/WASHER
 ON SURFACE - ~~BELOW~~ ON
 OFFSET CL PAVEMENT 0.5' ~~LT~~ : RT
- TO - EDGE PAVEMENT
 STATION: 820+47

HORZ.DATUM: NAD83(2011) GEOID: NAVD88 2012A
 GRID: NORTHING: 571204.467 EASTING: 1567196.352

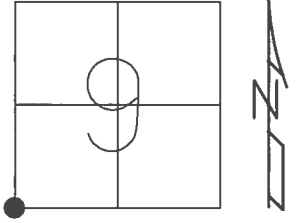


RECORD:
 FD 1" IPIN
 6" DOWN
 SET R.R. SPIKE
 ATOP IPIN
 SET SM.R.R.SPIKE
 10/14/86, MDB
 SET P.K./WASHER
 9/7/95, SAH
 FD P.K./WASHER
 5/13/10, KPM
 SET MAG/WASHER
 7/20/10, SAH
 FD MAG/WASHER
 REF33
 5/17/21, JFO
 9/3/21, TDN

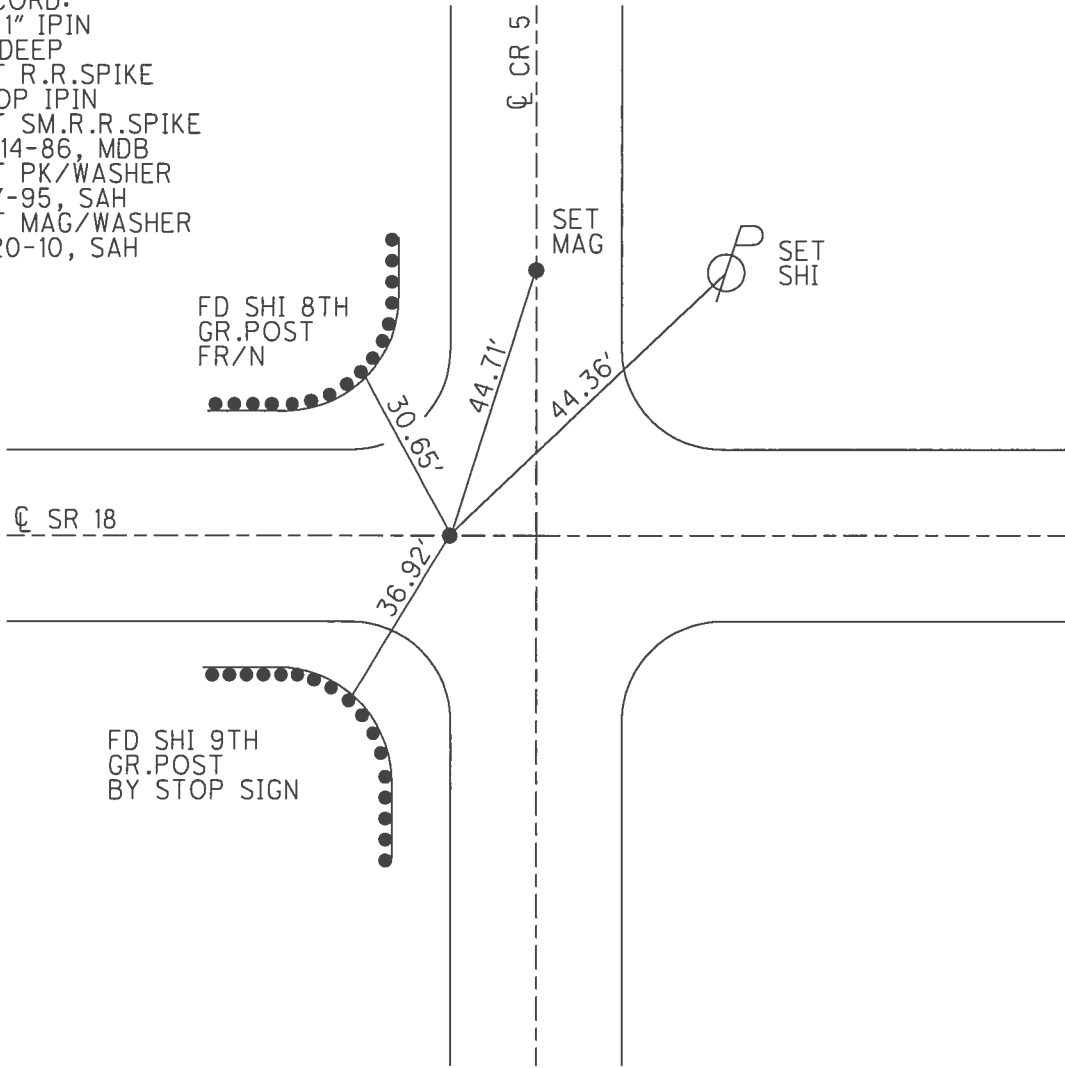
O.D.O.T. DISTRICT 2 SURVEY OFFICE (USE ONLY)

PERSONNEL _____ REFERENCE NO. 33 SHEET 8 OF 12
 NOTES MOSER DATE 5-13-10 ROUTE SR 18
 H.C. MOSER WEATHER CLOUDY COUNTY HENRY
 R.C. GOLDBERG TEMP. 70° TOWNSHIP BARTLOW
 SECTION 9
 T 3 N R 8 E

TYPE MONUMENT P.K./WASHER
 ON SURFACE - ~~BELOW~~ ON _____
~~LEFT~~ - ☉ PAV'T - RIGHT 0.5'
 - TO - EDGE PAVEMENT
 S.L.M. 820+47
 GRID: NORTHING: 571204.479 EASTING: 1567196.322



RECORD:
 FD 1" IPIN
 6" DEEP
 SET R.R.SPIKE
 ATOP IPIN
 SET SM.R.R.SPIKE
 10-14-86, MDB
 SET PK/WASHER
 9-7-95, SAH
 SET MAG/WASHER
 7-20-10, SAH



O.D.O.T. DISTRICT 2 SURVEY OFFICE

PERSONNEL _____ REFERENCE NO. 33 SHEET 12 OF 13
 NOTES MOSER DATE 5-13-10 ROUTE SR 18
 H.C. MOSER WEATHER CLOUDY COUNTY HENRY
 R.C. GOLDBERG TEMP. 70° TOWNSHIP BARTLOW
 _____ SECTION 9
 _____ T 3 N R 8 E

TYPE MONUMENT PK & WASHER
 ON SURFACE - ~~BELOW~~ YES
~~LEFT - C PAV'T~~ - RIGHT 0.5'
 _____ TO _____ EDGE PAVEMENT
 S.L.M. 820+47
 Grid: Northing: 571204.479 Easting: 1567196.322

8	CR 5	9
SR 18		
17		16



RECORD:
 FD 1" IRON PIN
 6" DEEP. SET
 RR SPK OVER

SET SM RR SPK
 10-14-86 MDB

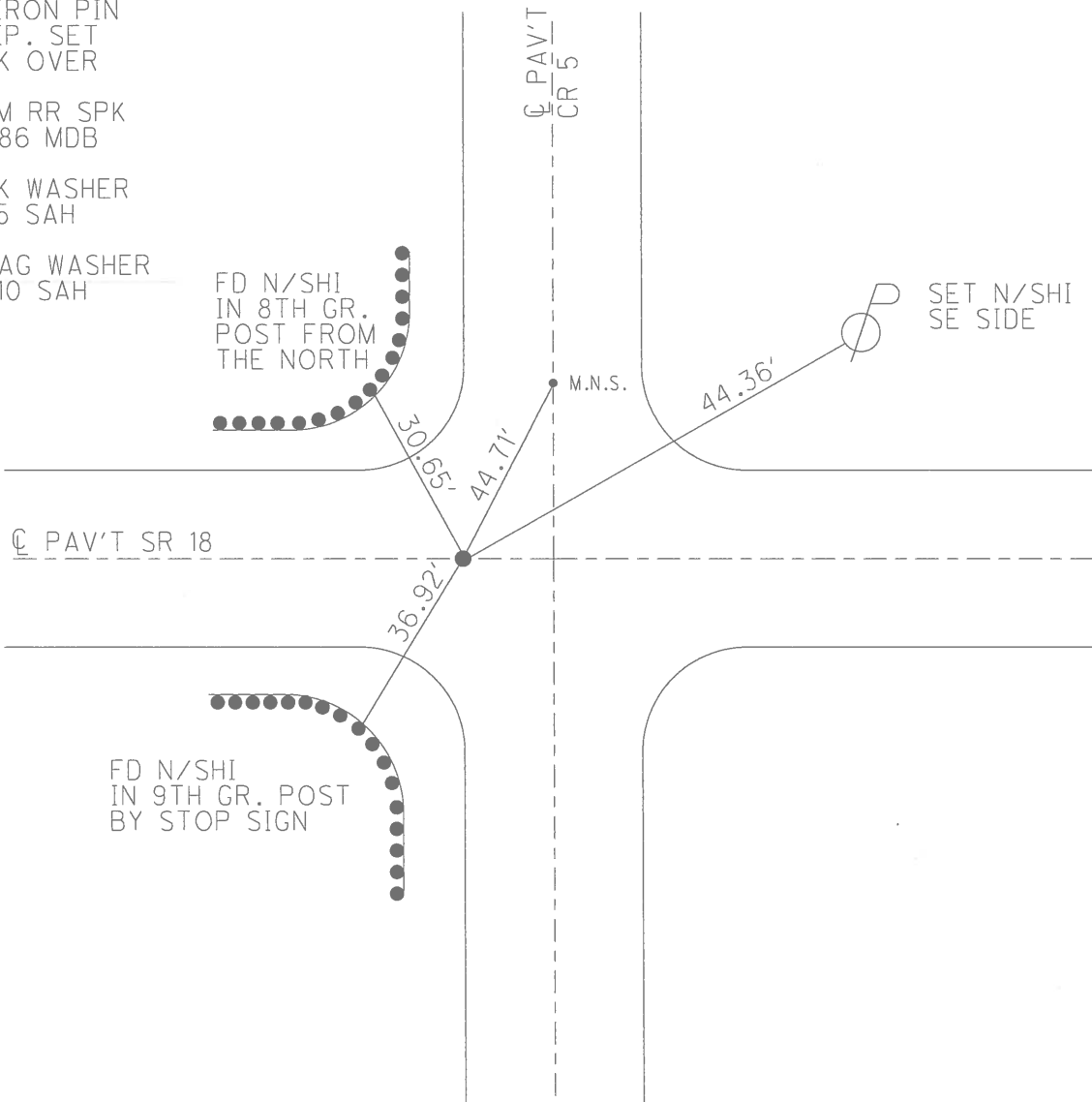
SET PK WASHER
 9-7-95 SAH

SET MAG WASHER
 7-20-10 SAH

FD N/SHI
 IN 8TH GR.
 POST FROM
 THE NORTH

M.N.S.

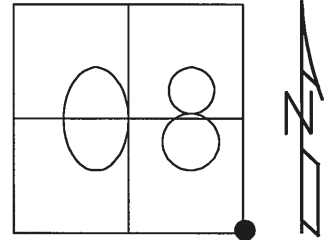
SET N/SHI
 SE SIDE



O.D.O.T. DISTRICT 2 SURVEY OFFICE (USE ONLY)

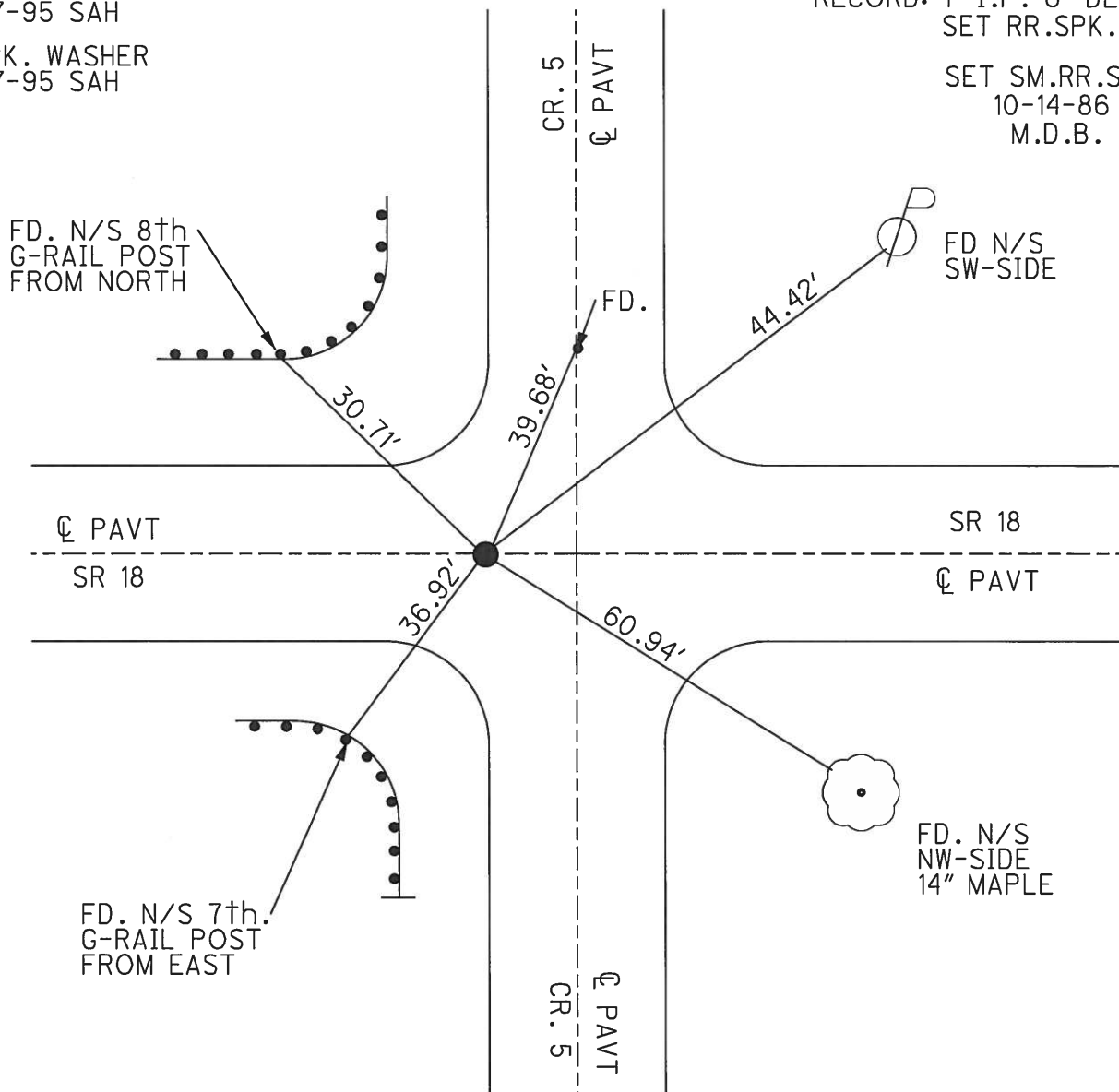
PERSONNEL	REFERENCE NO. <u>33</u>	SHEET <u>3</u> OF <u>3</u>
NOTES <u>CANTERBURY</u>	DATE <u>06-04-07</u>	ROUTE <u>SR 18</u>
H.C. <u>CANTERBURY</u>	WEATHER <u>SUNNY</u>	COUNTY <u>HENRY</u>
R.C. <u>MIKLOVICK</u>	TEMP. <u>+80°</u>	TOWNSHIP <u>BARTLOW</u>
		SECTION <u>8</u>
		T <u>3</u> N R <u>8</u> E

TYPE MONUMENT FD. PK/WASHER
 ON SURFACE - ~~BELOW~~ ON SURFACE
~~LEFT~~ - C PAV'T - RIGHT 0.5' RT.
TO EDGE PAVEMENT
 S.L.M. 820+47 (SV1)
 Grid: Northing: 571204.480 Easting: 1567196.309



FD. PK. WASHER
06-07-95 SAH
 SET PK. WASHER
09-07-95 SAH

RECORD: 1" I.P. 6" DEEP
SET RR.SPK. OVER
 SET SM.RR.SPK.
10-14-86
M.D.B.



O.D.O.T. DISTRICT 2 SURVEY OFFICE

PERSONNEL

REFERENCE NO. 33

SHEET 12 OF 13

NOTES HUSS

H.C. VAN DUSEN

DATE 6-7-95

ROUTE SR - 18

R.C. MOSEK

WEATHER Sunny

COUNTY Henry

TEMP. +80°F

TOWNSHIP Barlow

SECTION 9

T R

TYPE MONUMENT PK NAIL & WASHER

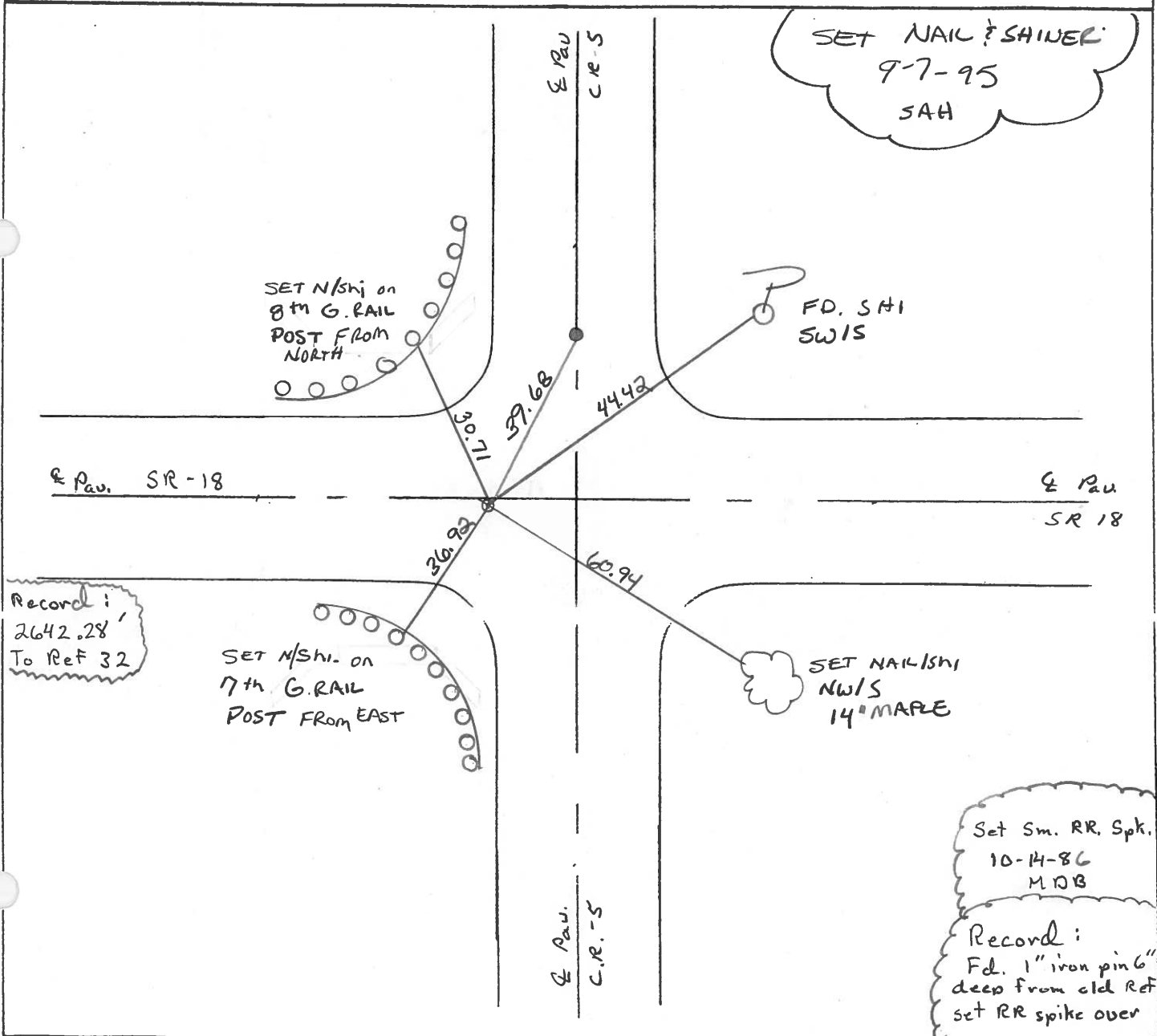
ON SURFACE - ~~BELOW~~ YES

~~LEFT~~ PAV'T. - RIGHT 0.5

~~TO~~ EDGE PAVEMENT

S.L.M. 820 + 47

8	9
17	16



O.D.O.T. DISTRICT 2 SURVEY OFFICE

PERSONNEL

REFERENCE NO. 33

SHEET OF

NOTES BARNHISEL

H.C. Loehrke

R.C. Sockman

DATE Aug 4, 1986

WEATHER SUNNY

TEMP. +84°

ROUTE SR 18

COUNTY Henry

TOWNSHIP Bartlow

SECTION 9

T R

TYPE MONUMENT Sm RR Spk

ON SURFACE - BELOW yes

LEFT - & PAV'T. - RIGHT 0.5

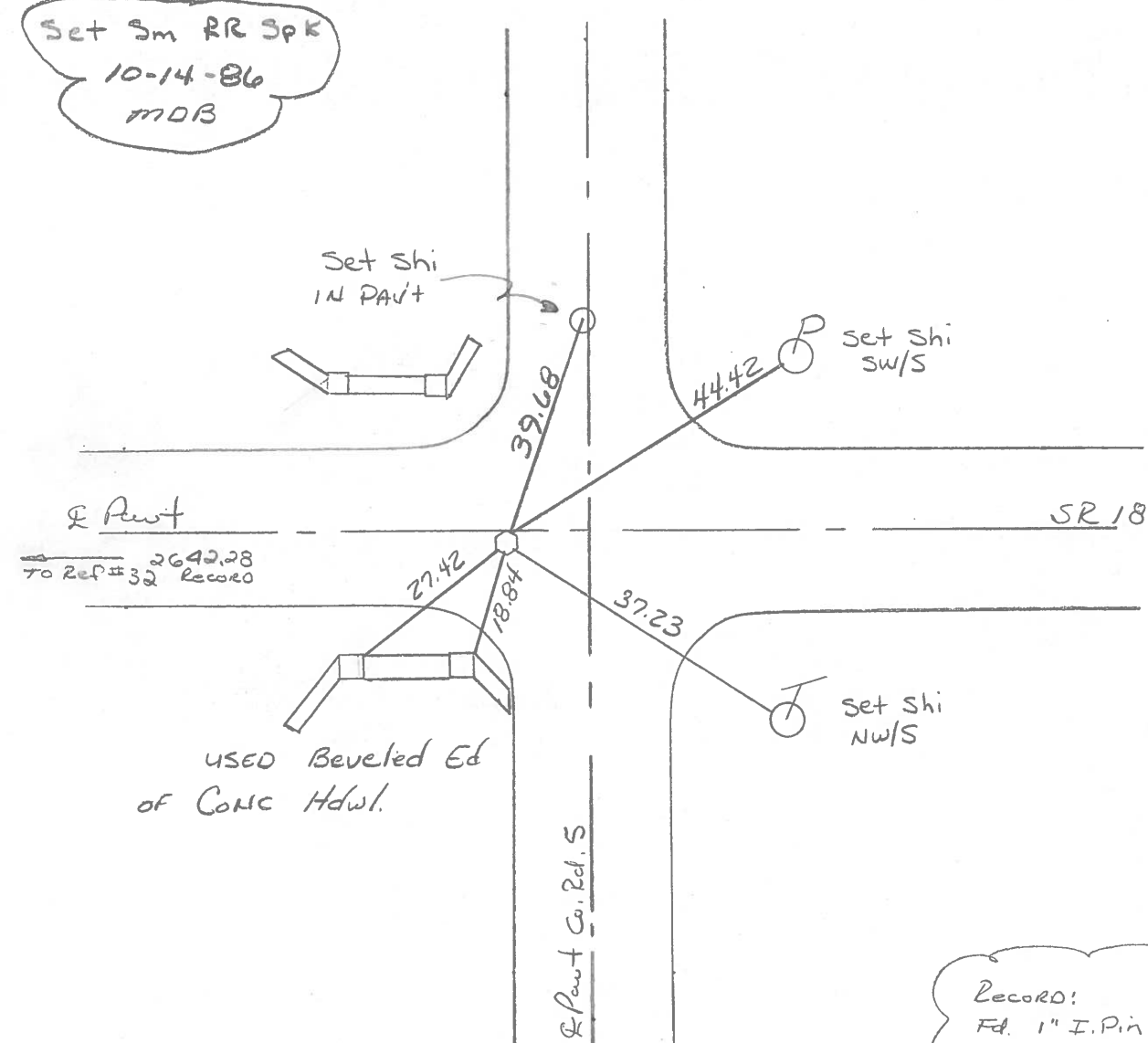
- TO - EDGE PAVEMENT

S.L.M. 820 +06 9' W of Co Rd 5" S.

8	9
17	16



Set Sm RR Spk
10-14-86
MDB



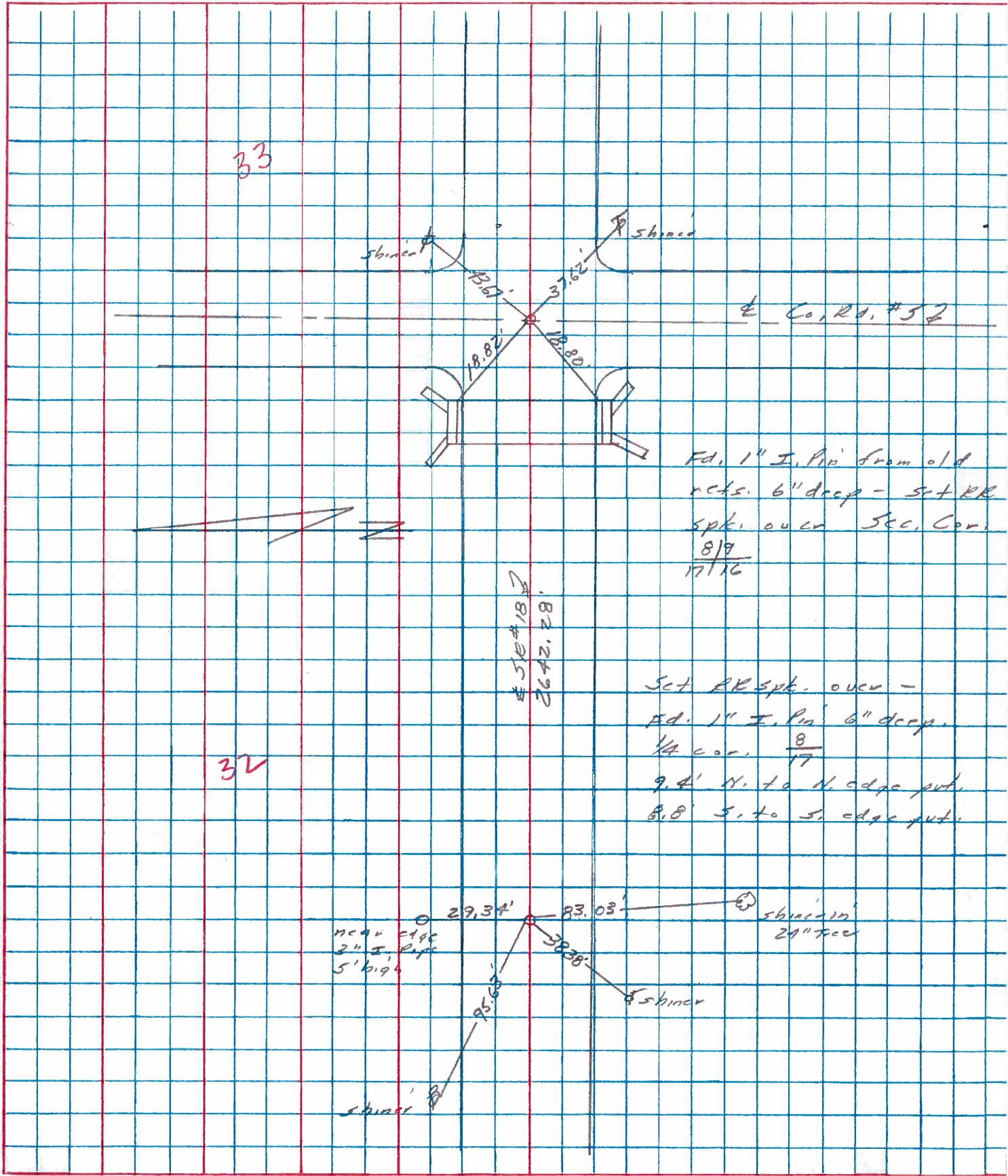
USED Beveled Ed
of CONC Hdwl.

RECORD!
Fd. 1" I. Pin 6" deep
From old Ref.
Set R.R. spk over

PERSONNEL	TITLE	PERSONNEL	TITLE	COUNTY	DATE	WEATHER	TEMP.
Stone				Henry	8 Oct. 74	Cool	45°
Michalek				#18			
Deana				Barlow Twp.			
Curtis							

DESCRIPTION: Refs. to Control points JOB NO. _____

LEFT CENTER LINE RIGHT



33

32

PERSONNEL TITLE PERSONNEL TITLE

Stone
 Michalak
 Deane
 Curtis

COUNTY Henry DATE 8 May 79

S. R. #18 WEATHER Cool

SEC. Bartlow Twp TEMP. 57°

DESCRIPTION

Alignment

JOB NO. 02999(10)

LEFT

CENTER LINE

RIGHT

