

O.D.O.T. DISTRICT 2 SURVEY OFFICE (USE ONLY)

PERSONNEL

REFERENCE NO. 34

SHEET 9 OF 12

NOTES AUBLE

DATE 5/17/21

ROUTE SR 18

H.C. NIESE

WEATHER CLOUDY

COUNTY HENRY

R.C. O'DONNELL

TEMP. 63°

TOWNSHIP BARTLOW

SECTION 9

DWG BY NIESE

PID PAVETRAIN

T 3 N R 8 E

TYPE MONUMENT MAG/WASHER

ON SURFACE - ~~BELOW~~ ON

OFFSET CL PAVEMENT ON LT : RT

9.4' TO LT EDGE PAVEMENT

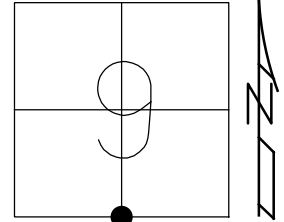
STATION: 847+07

HORIZ.DATUM: NAD83(2011)

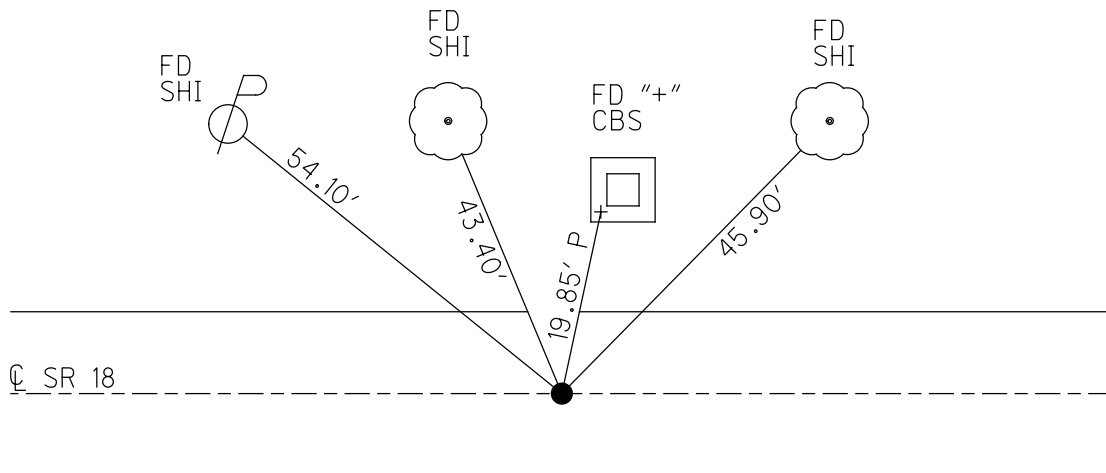
GEOID: NAVD88 2012A

GRID: NORTHING: 571201.727

EASTING: 1569856.918



RECORD:  
 FD P.K./WASHER  
 5/13/10, KPM  
 FD MAG/WASHER  
 REF34  
 5/17/21, JFO  
 9/3/21, TDN

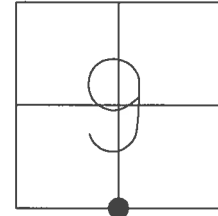


O.D.O.T. DISTRICT 2 SURVEY OFFICE (USE ONLY)

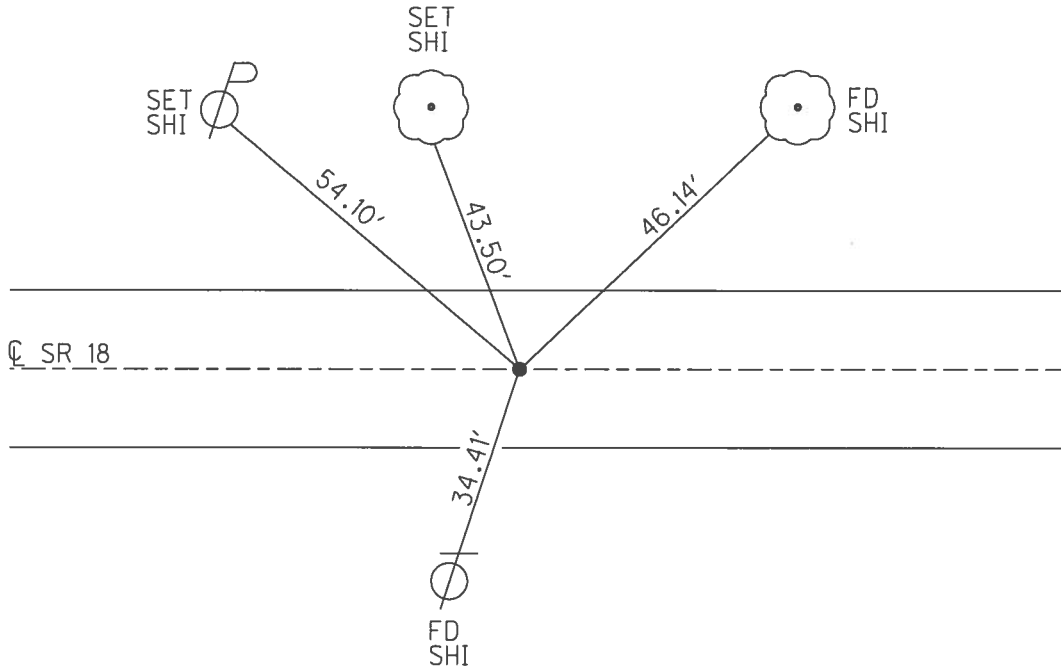
PERSONNEL	REFERENCE NO.	<u>34</u>	SHEET	<u>9</u>	OF	<u>12</u>
NOTES	<u>MOSER</u>	DATE	<u>5-13-10</u>	ROUTE	<u>SR 18</u>	
H.C.	<u>MOSER</u>	WEATHER	<u>CLOUDY</u>	COUNTY	<u>HENRY</u>	
R.C.	<u>GOLDBERG</u>	TEMP.	<u>70°</u>	TOWNSHIP	<u>MARION</u>	
				SECTION	<u>9</u>	
				<u>T 3 N</u>	<u>R 8 E</u>	

TYPE MONUMENT P.K./WASHER  
 ON SURFACE - ~~BELOW~~ ON  
 LEFT - ☉ PAV'T - RIGHT ON  
9.4' TO LT EDGE PAVEMENT  
 S.L.M. 847+07

GRID: NORTHING: 571201.734 EASTING: 1569856.865



RECORD:  
 FD P.K./WASHER  
 5/13/10, KPM



O.D.O.T. DISTRICT 2 SURVEY OFFICE

PERSONNEL

REFERENCE NO. 34

SHEET 13 OF 13

NOTES MOSER

DATE 5-13-10

ROUTE SR 18

H.C. MOSER

WEATHER CLOUDY

COUNTY HENRY

R.C. GOLDBERG

TEMP. 70°

TOWNSHIP MARION

SECTION 9

T 3 N R 8 E

TYPE MONUMENT PK & WASHER

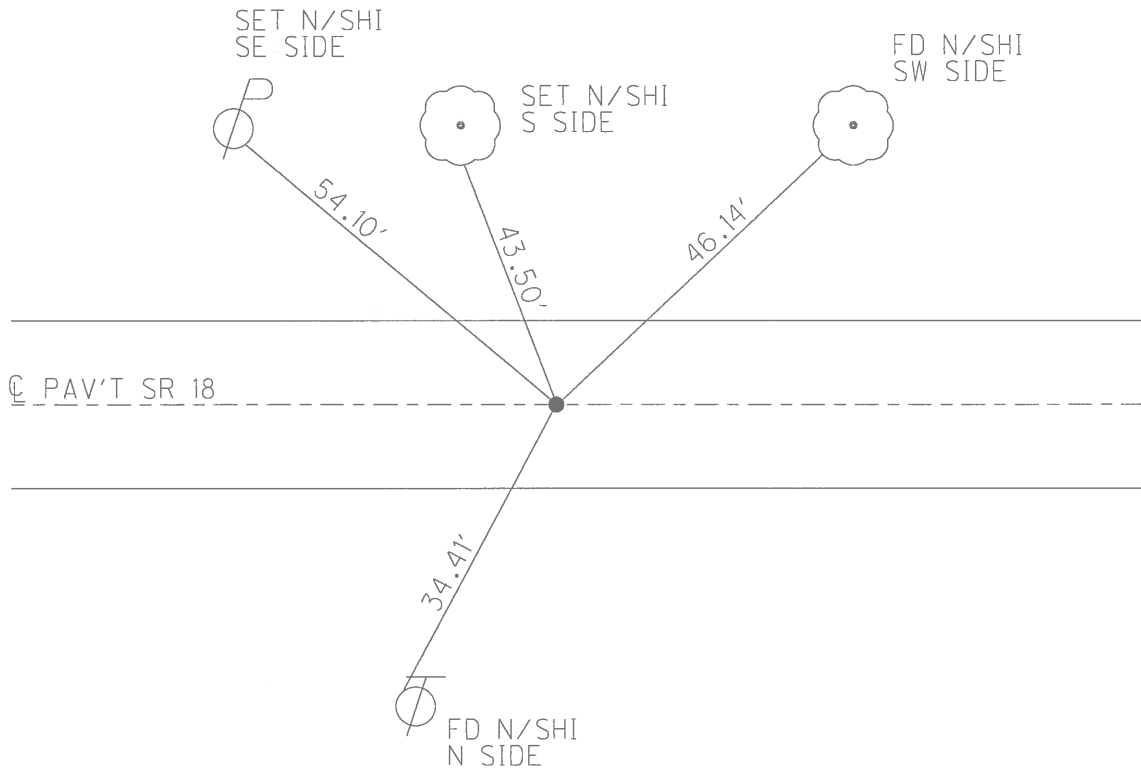
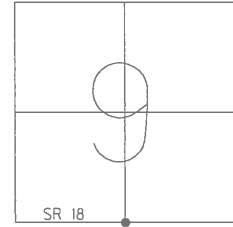
ON SURFACE - ~~BELOW~~ YES

~~LEFT~~ - Q PAV'T - ~~RIGHT~~ YES

9.4' TO LT. EDGE PAVEMENT

S.L.M. 847+07

Grid: Northing: 571201.734 Easting: 1569856.865



O.D.O.T. DISTRICT 2 SURVEY OFFICE

PERSONNEL

REFERENCE NO. 34

SHEET 13 OF 13

NOTES HUSS

H.C. YAN DUSEN

DATE 6-7-95

ROUTE SR-18

R.C. MOSEY

WEATHER Sunny

COUNTY Henry

TEMP. +80°F

TOWNSHIP Bartlow

SECTION 9

T 3 N R 8 E

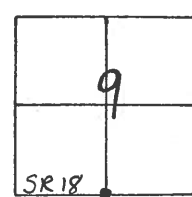
TYPE MONUMENT PK & WASHER

ON SURFACE - ~~BELOW~~ YES

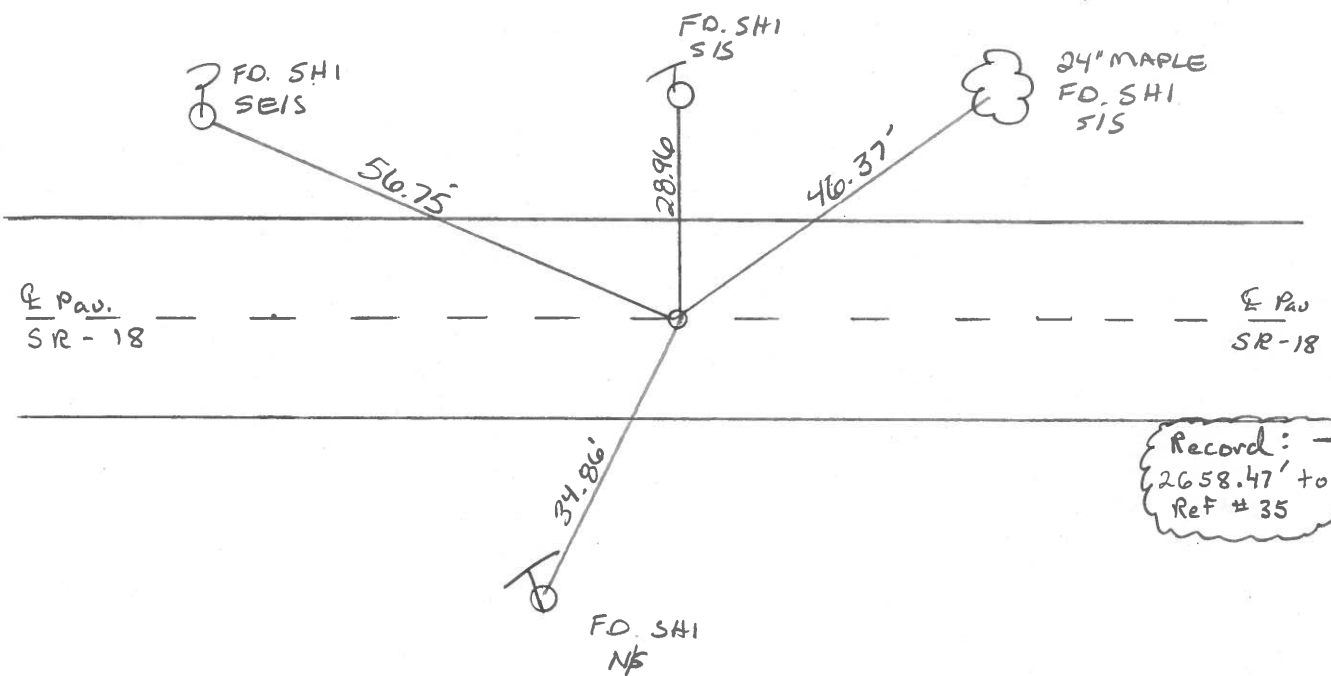
~~LEFT~~ - & PAV'T. - ~~RIGHT~~ YES

7.5 TO RT EDGE PAVEMENT

S.L.M. 847+07



SET PK & WASHER  
9-7-95  
SAH



Record: →  
2658.47' to  
Ref # 35

Record: Set  
Sm. RR. Spk  
10-14-86  
M D B

Record: Set RR  
Spk as per 1932 Ret's

# O.D.O.T. DISTRICT 2 SURVEY OFFICE

PERSONNEL

REFERENCE NO. 34

SHEET      OF     

NOTES BARNHISEL

H.C. Loehrke

R.C. SOCKMAN

DATE Aug 4, 1986

WEATHER SUNNY

TEMP. +84°

ROUTE SR 18

COUNTY HENRY

TOWNSHIP BARTLOW

SECTION 9

T3 N R 8 E

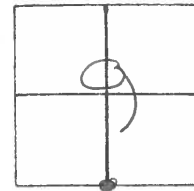
TYPE MONUMENT Sm RR Spk

ON SURFACE - BELOW yes

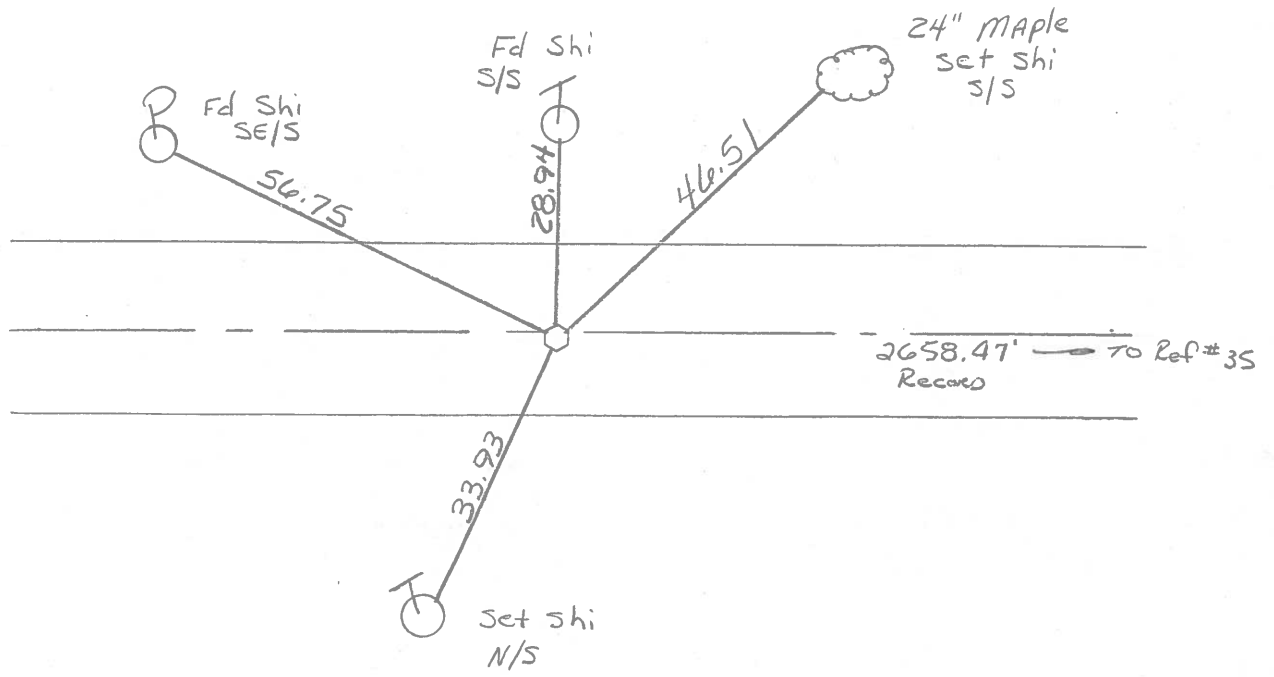
LEFT - & PAV'T. - RIGHT 0.7

8.5 TO RT EDGE PAVEMENT

S.L.M. 846+71



Set Sm RR Spk  
10-14-86  
MAB



Record! set RR spk  
⊗ Per 1932 refs.

PERSONNEL TITLE PERSONNEL TITLE

COUNTY Henry DATE 8 Oct. 74

Stone  
Michaelb  
Denno  
Curtis

S. R. #18 WEATHER Cool

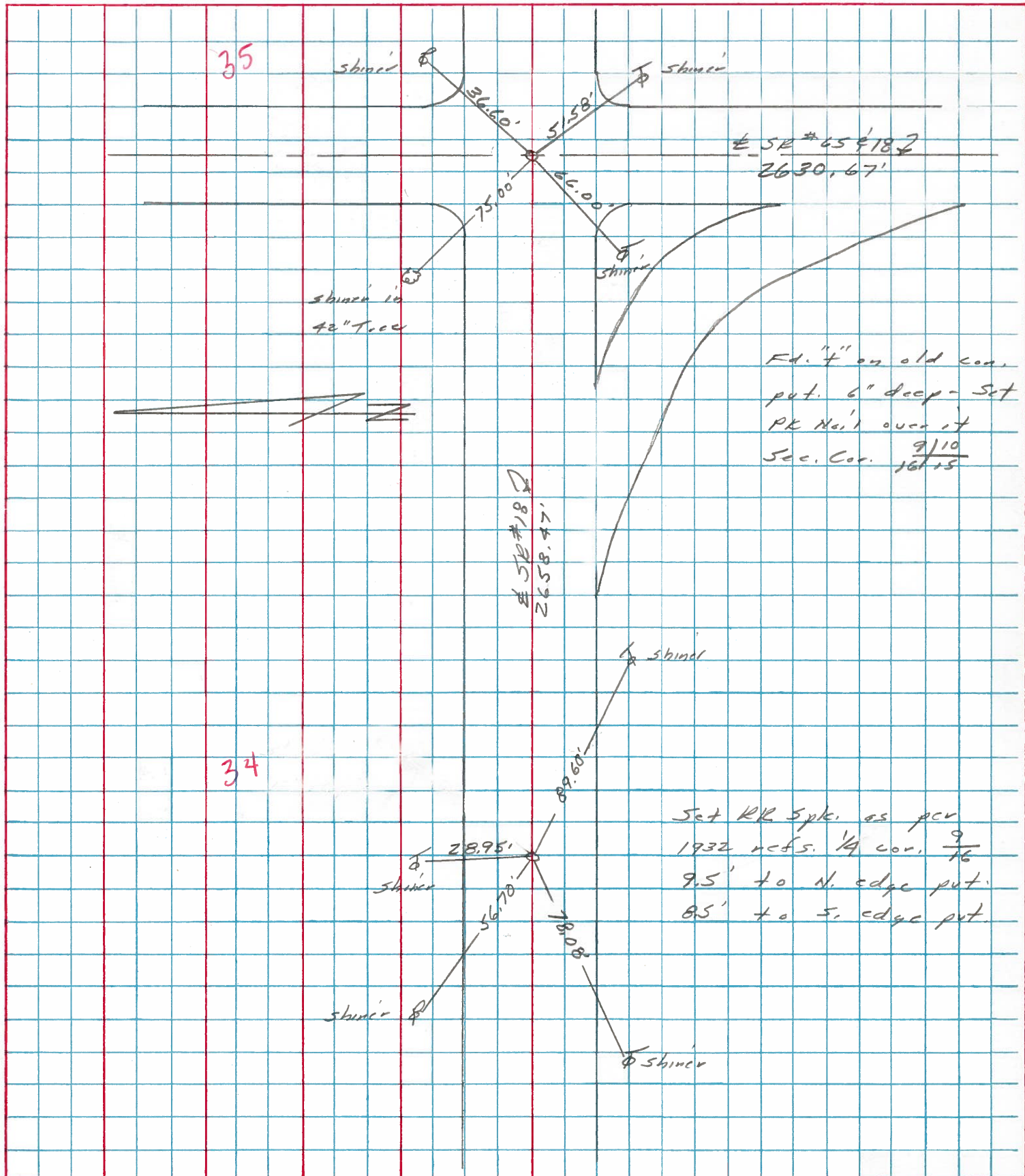
SEC. Bartlow Twp. TEMP. 78°

DESCRIPTION

Refs. to Control Points

JOB NO.

LEFT CENTER LINE RIGHT



PERSONNEL TITLE PERSONNEL TITLE

COUNTY Henry DATE 8 May 79

Stone  
Michalak  
Dean  
Curtis

S. R. #18 WEATHER Cool  
 SEC. Barlow Twp TEMP. 57°

DESCRIPTION

Alignment  
 LEFT CENTER LINE RIGHT

JOB NO. 02999(0)

