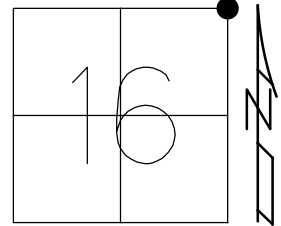


O.D.O.T. DISTRICT 2 SURVEY OFFICE (USE ONLY)

PERSONNEL \_\_\_\_\_ REFERENCE NO. 35 SHEET 10 OF 12  
 NOTES RHOADES DATE 5/3/17 ROUTE SR 18  
 H.C. O'DONNELL WEATHER CLOUDY COUNTY HENRY  
 R.C. HELDMAN TEMP. 52° TOWNSHIP BARTLOW  
 SECTION 16  
 DWG BY NIESE PID \_\_\_\_\_ T 3 N R 8 E

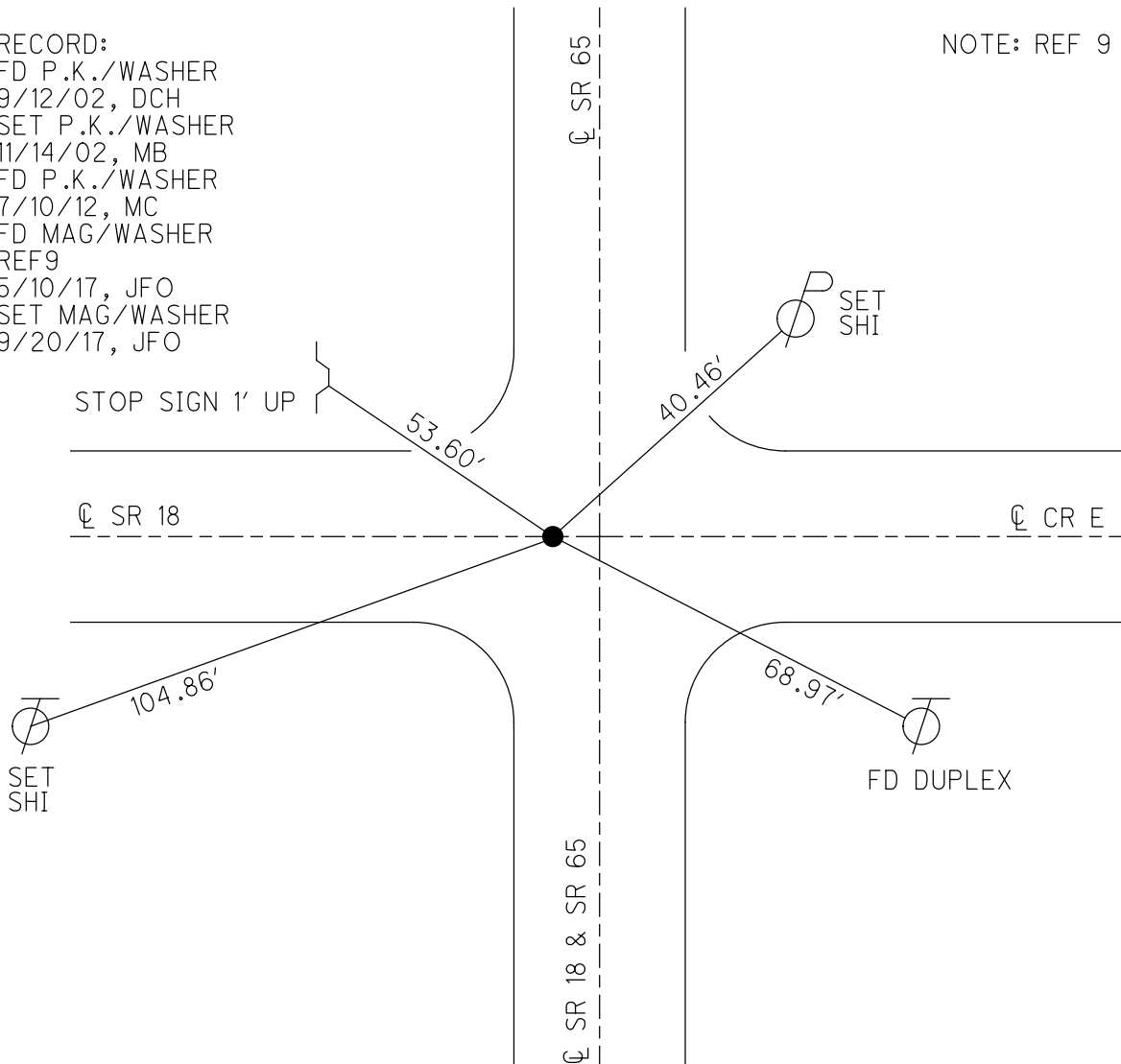
TYPE MONUMENT MAG/WASHER  
 ON SURFACE - ~~BELOW~~ ON  
 OFFSET CL PAVEMENT 2.0' ~~LT~~ : RT  
- TO - EDGE PAVEMENT  
 STATION: 873+84

HORIZ.DATUM: NAD83(2011) GEOID: NAVD88 2012A  
 GRID: NORTHING: 571197.153 EASTING: 1572515.028



RECORD:  
 FD P.K./WASHER  
 9/12/02, DCH  
 SET P.K./WASHER  
 11/14/02, MB  
 FD P.K./WASHER  
 7/10/12, MC  
 FD MAG/WASHER  
 REF9  
 5/10/17, JFO  
 SET MAG/WASHER  
 9/20/17, JFO

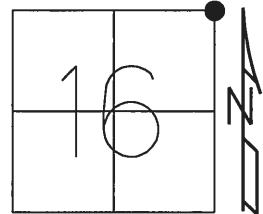
NOTE: REF 9 SR 65



O.D.O.T. DISTRICT 2 SURVEY OFFICE (USE ONLY)

PERSONNEL	REFERENCE NO.	<u>35</u>	SHEET	<u>10</u> OF <u>12</u>	
NOTES	RHOADES	DATE	<u>5/3/17</u>	ROUTE	<u>SR 18</u>
H.C.	O'DONNELL	WEATHER	<u>CLOUDY</u>	COUNTY	<u>HENRY</u>
R.C.	HELDMAN	TEMP.	<u>52°</u>	TOWNSHIP	<u>BARTLOW</u>
				SECTION	<u>16</u>
				T	<u>3</u> N
				R	<u>8</u> E

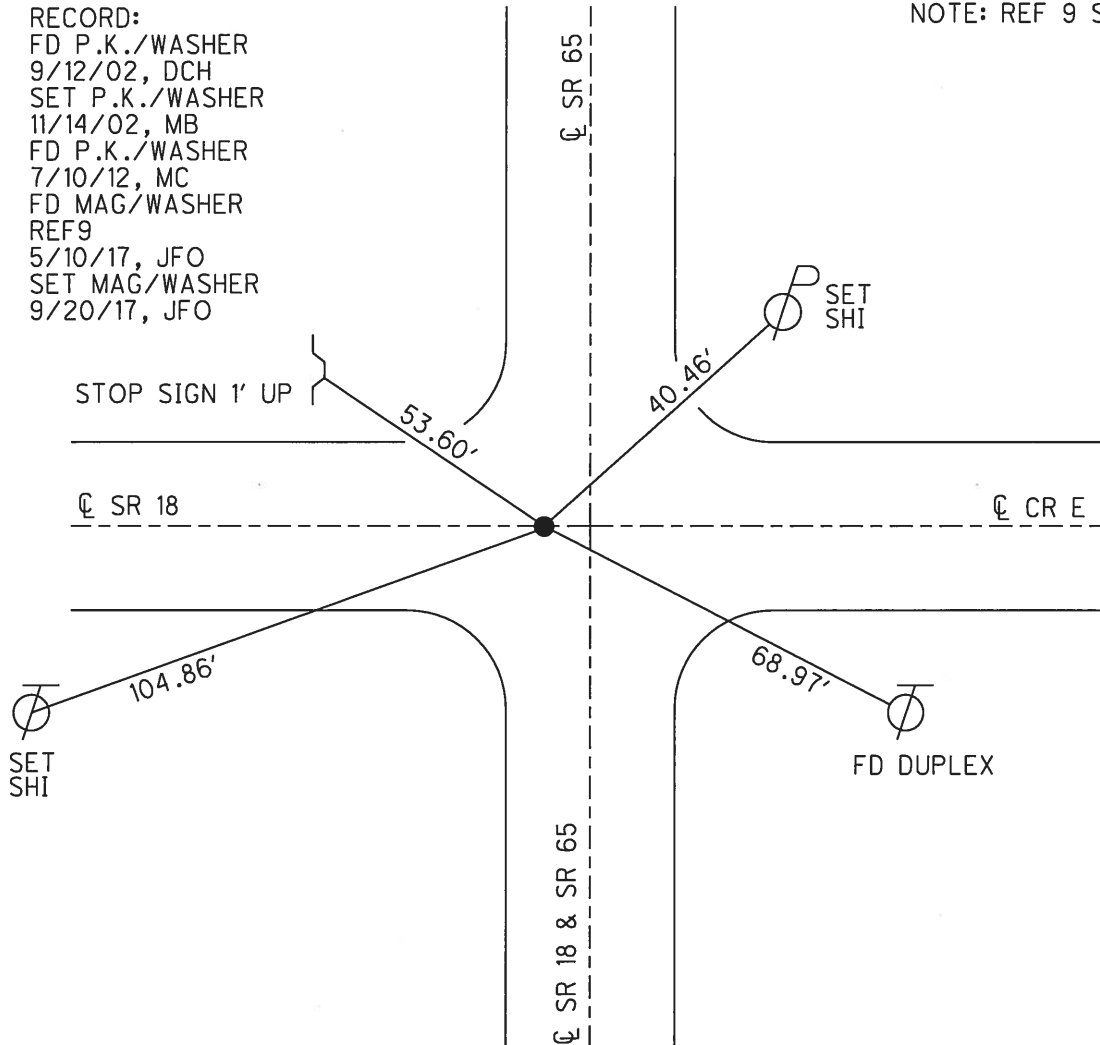
TYPE MONUMENT MAG/WASHER  
 ON SURFACE - ~~BELOW~~ ON  
~~LEFT~~ - ☉ PAV'T - RIGHT 2'  
TO - EDGE PAVEMENT  
 S.L.M. 873+84



GRID: NORTHING: 571197.153 EASTING: 1572515.028

RECORD:  
 FD P.K./WASHER  
 9/12/02, DCH  
 SET P.K./WASHER  
 11/14/02, MB  
 FD P.K./WASHER  
 7/10/12, MC  
 FD MAG/WASHER  
 REF9  
 5/10/17, JFO  
 SET MAG/WASHER  
 9/20/17, JFO

NOTE: REF 9 SR 65



# O.D.O.T. DISTRICT 2 SURVEY OFFICE

SR 18 = #35

PERSONNEL \_\_\_\_\_

REFERENCE NO. 9

SHEET 10 OF 29

NOTES Homan

H.C. BARNHISEL

DATE 9-12-02

ROUTE 65

R.C. BEAUMONT

WEATHER SUNNY

COUNTY HENRY

TEMP. +75°

TOWNSHIP BARTLOW

DRAWN - BARNHISEL

SECTION 16

T 3 N R 8 E

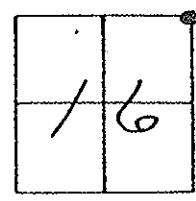
TYPE MONUMENT PK & Washer

ON SURFACE - ~~BELOW~~ yes

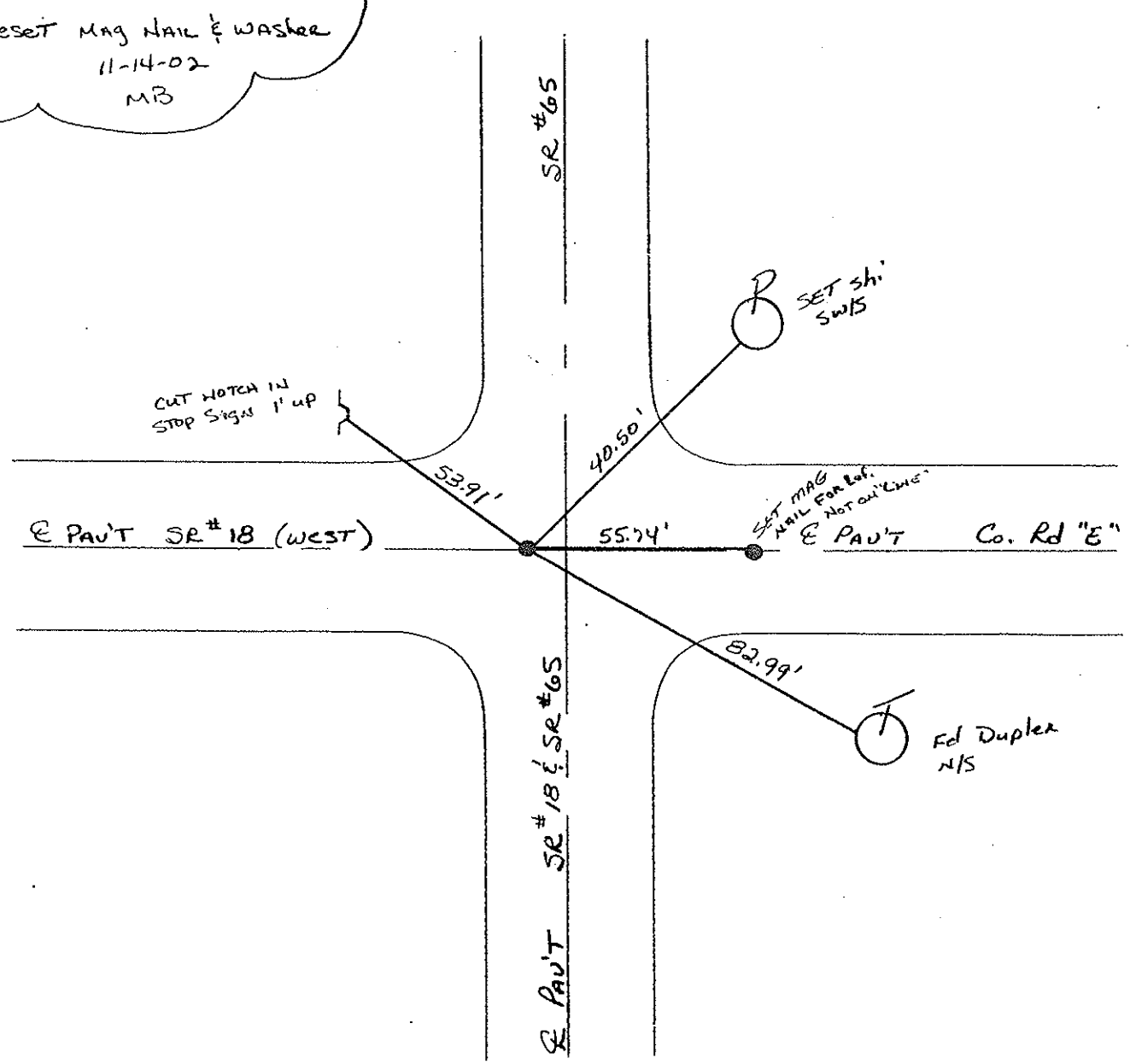
LEFT - ~~E~~ PAU'T. - ~~RIGHT~~ 4.4'

- TO - EDGE PAVEMENT

S.L.M. SR 65 = 211+11      SR 18 = 873+84



Reset Mag Nail & Washer  
11-14-02  
MB



Resurced. - cold-in-place-Recycle 2002 WITH SR65

### O.D.O.T. DISTRICT 2 SURVEY OFFICE

PERSONNEL

REFERENCE NO. <sup>SR. 65 #9</sup> SR. 18 #35 SHEET 10 OF 18

NOTES BARNHISEL

H.C. KUSZ

DATE 7-21-93

ROUTE SR 65

R.G. BARNHISEL

WEATHER SUNNY

COUNTY HENRY

OTTO P

TEMP. +75° F

TOWNSHIP BARTLOW

SECTION 16

T.3 N. R. 8 E

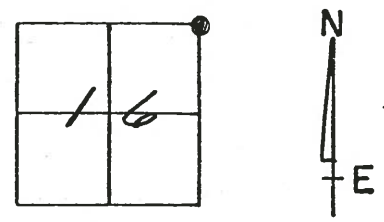
TYPE MONUMENT PK & WASHER

ON SURFACE - ~~BELOW~~ YES

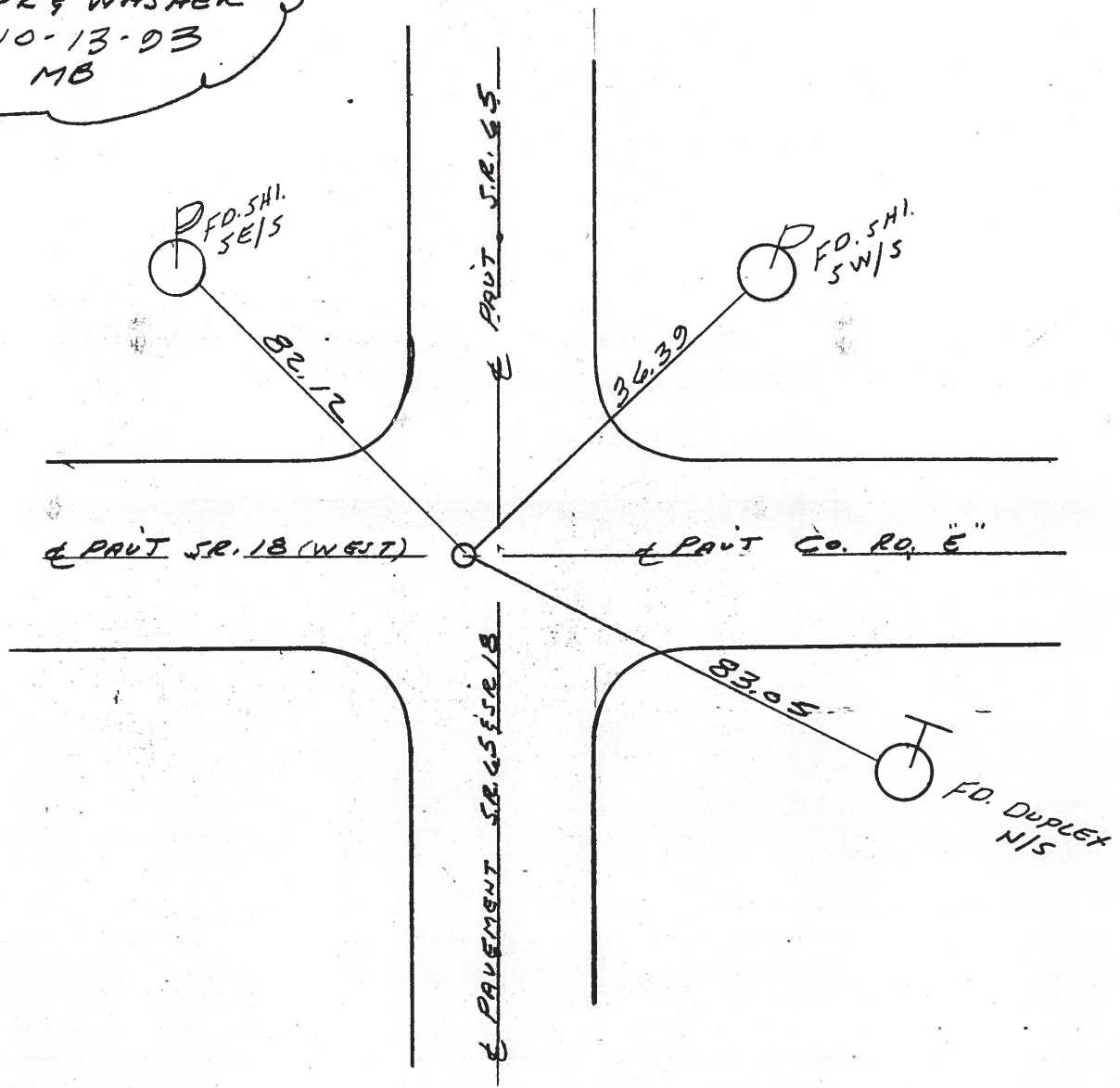
LEFT - & PAVT. - RIGHT 4.4 LT. OF 4.65

TO EDGE PAVEMENT

S.L.M. 212+23 (SR 18 = 873+84)



SET PK & WASHER  
10-13-93  
MB



PERSONNEL TITLE PERSONNEL TITLE

COUNTY Henny DATE 8 Oct. 74

Stone

S. R. #18 WEATHER Cool

Michael

Denno

SEC. Bartlow Twp. TEMP. 48°

Curtis

DESCRIPTION

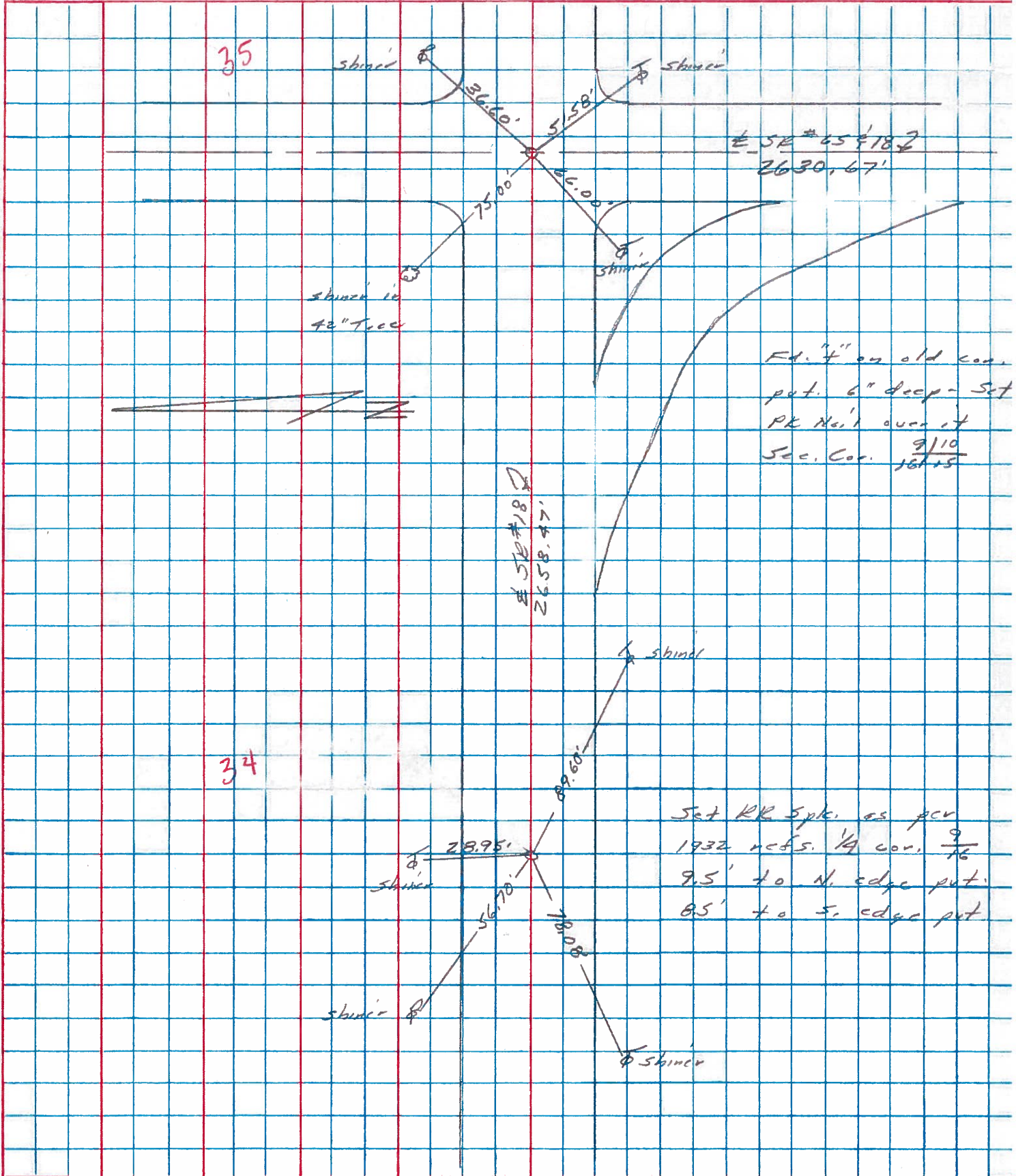
Refs. to Control Points

JOB NO.

LEFT

CENTER LINE

RIGHT



PERSONNEL TITLE PERSONNEL TITLE

Stone  
 Michalak  
 Deane  
 Curtis

COUNTY Henry DATE 8 May 79

S. R. #18 WEATHER Cool

SEC. Bartlow Twp TEMP. 57°

DESCRIPTION

Alignment  
 CENTER LINE

JOB NO. 02999(10)

LEFT

RIGHT

