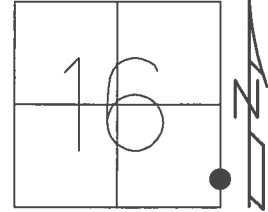


O.D.O.T. DISTRICT 2 SURVEY OFFICE (USE ONLY)

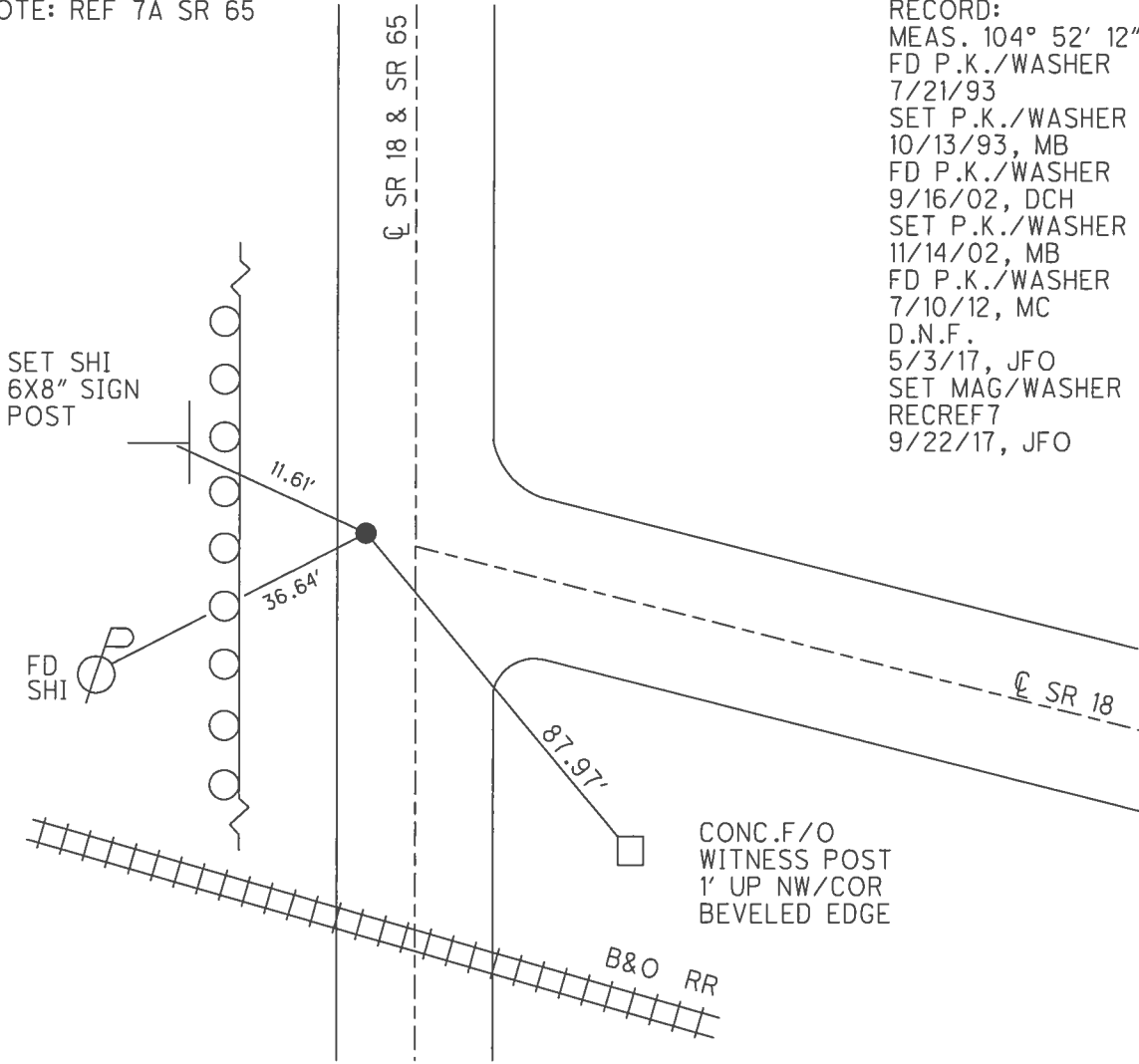
PERSONNEL	REFERENCE NO.	<u>37</u>	SHEET	<u>12</u>	OF	<u>12</u>
NOTES	<u>RHOADES</u>	DATE	<u>9/22/17</u>	ROUTE	<u>SR 18</u>	
H.C.	<u>O'DONNELL</u>	WEATHER	<u>FAIR</u>	COUNTY	<u>HENRY</u>	
R.C.	<u>RHOADES</u>	TEMP.	<u>70°</u>	TOWNSHIP	<u>BARTLOW</u>	
				SECTION	<u>16</u>	
				T	<u>3</u>	R
					<u>8</u>	E

TYPE MONUMENT MAG/WASHER
 ON SURFACE - ~~BELOW~~ ON
 LEFT - ☉ PAV'T - ~~RIGHT~~ 8.6', 0.7' N OF ☉ SR 18
1.6' TO LT EDGE PAVEMENT
 S.L.M. 920+56
 GRID: NORTHING: 566529.641 EASTING: 1572505.884



NOTE: REF 7A SR 65

RECORD:
 MEAS. 104° 52' 12"
 FD P.K./WASHER
 7/21/93
 SET P.K./WASHER
 10/13/93, MB
 FD P.K./WASHER
 9/16/02, DCH
 SET P.K./WASHER
 11/14/02, MB
 FD P.K./WASHER
 7/10/12, MC
 D.N.F.
 5/3/17, JFO
 SET MAG/WASHER
 RECF7
 9/22/17, JFO



CONC.F/O
 WITNESS POST
 1' UP NW/COR
 BEVELED EDGE

O.D.O.T. DISTRICT 2 SURVEY OFFICE

SR 18 = #37

PERSONNEL _____

REFERENCE NO. 7-A

SHEET 8 OF 29

NOTES BARNHISEL RC

H.C. CANTERBURY

R.C. _____

DATE 9-16-02

WEATHER SUNNY

TEMP. +70°

ROUTE 65

COUNTY HENRY

TOWNSHIP BARTLOW

SECTION 16

T 3 N R 8 E

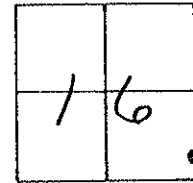
TYPE MONUMENT PK & Washer

ON SURFACE - BELOW YES

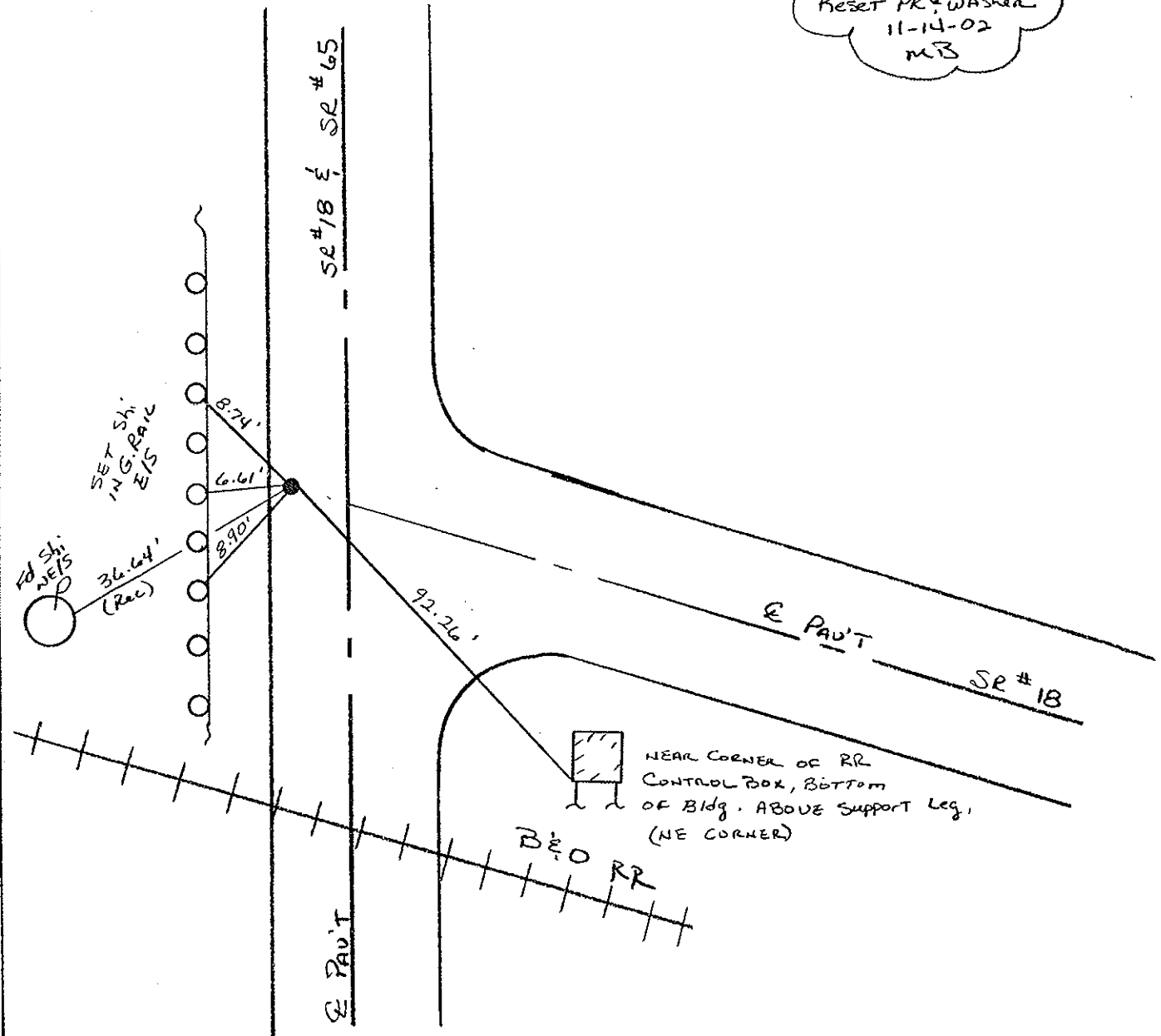
LEFT-CL PAV'T. - RIGHT 8.16

1.6' TO LT EDGE PAVEMENT 0.7' N. OF E SR 18

S.L.M. 164+65 SR 65 / 920+56 SR 18



Reset PK & Washer
11-14-02
MB



O.D.O.T. DISTRICT 2 SURVEY OFFICE

S.R. 65 # 7-A

PERSONNEL

REFERENCE NO. SR 18 # 37 SHEET 8 OF 18

NOTES BARNHISEL

H.C. KUSZ

R.C. BARNHISEL

OTTO P

DATE 7-21-93

WEATHER SUNNY

TEMP. + 75° F

ROUTE SR 18 & 65

COUNTY Henry

TOWNSHIP Bartlow

SECTION 15

T 3 N R 8 E

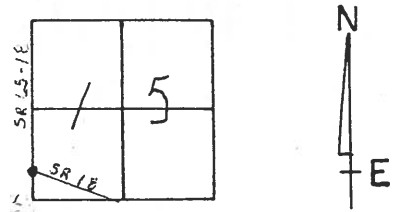
TYPE MONUMENT P.K. Nail + Washer

ON SURFACE - BELOW YES

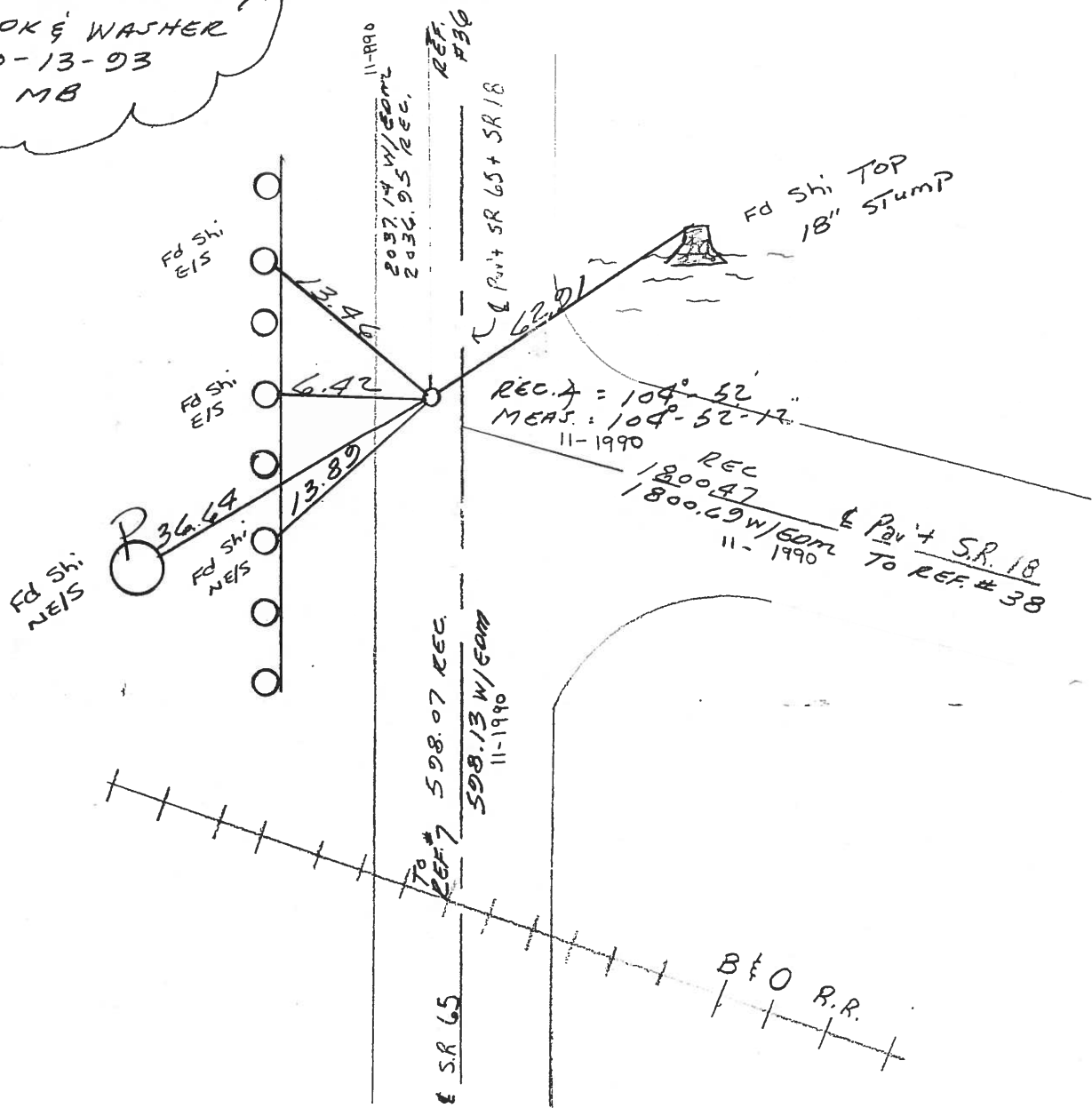
LEFT- & PAV'T. - RIGHT 2.6 ON SR 65

1.6 TO LT. EDGE PAVEMENT ON SR 65

S.L.M. 165+70 SR 65 / 920+56 SR 18



SET PK & WASHER
 10-13-93
 MB



O.D.O.T. DISTRICT 2 SURVEY OFFICE

PERSONNEL

REFERENCE NO. 37

SHEET OF

NOTES Hoffman

H.C. BARNHISEL

DATE 11-13-90

ROUTE SR 18 F 65

R.C.

WEATHER P. CLEAR

COUNTY HENRY

TEMP. 40°

TOWNSHIP BARTLOW

SECTION

T R

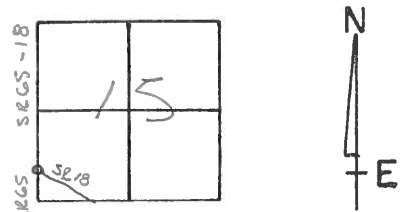
TYPE MONUMENT Set P.K. / washer

ON SURFACE - BELOW yes

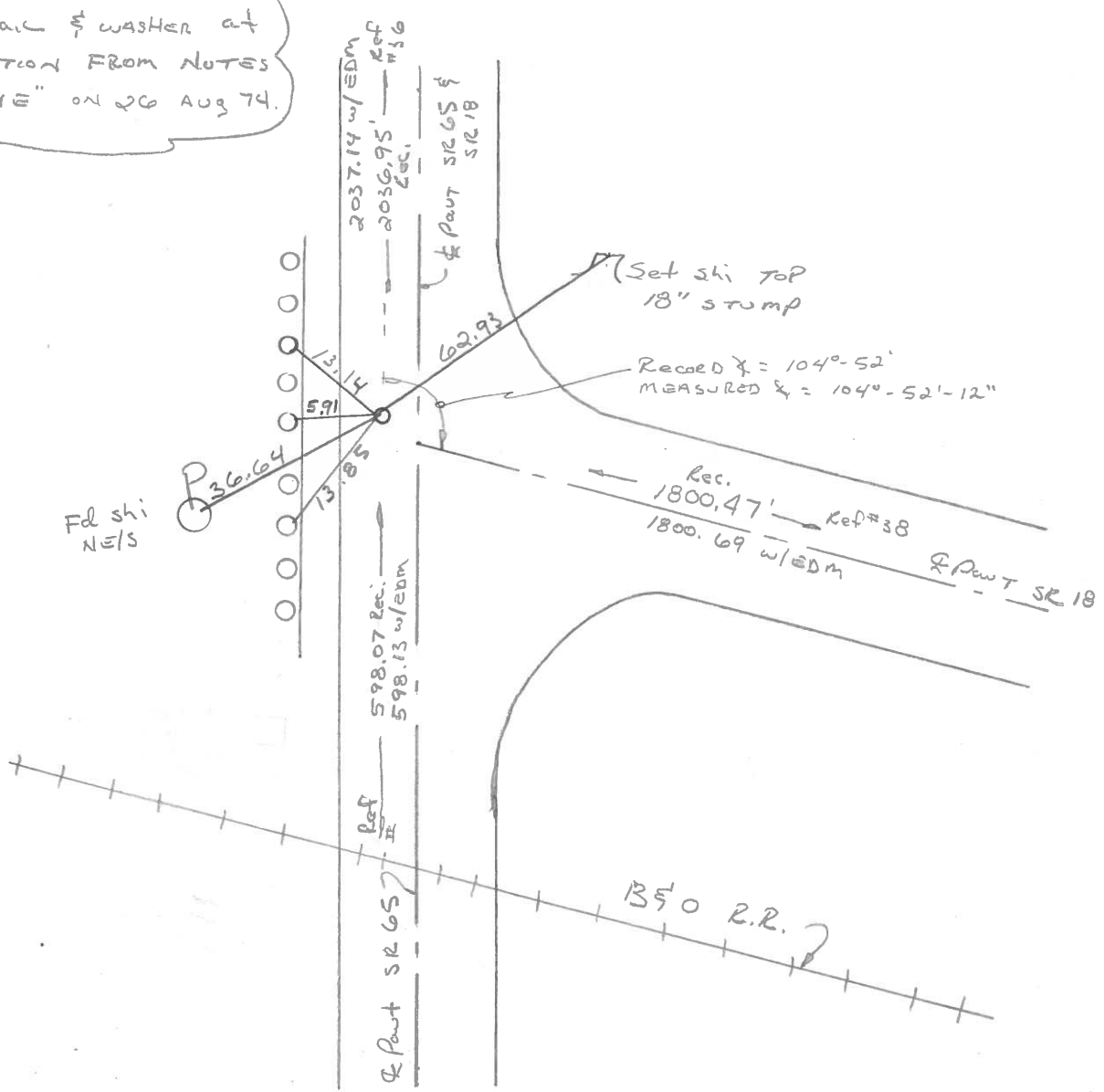
LEFT - ☉ PAW'T. - RIGHT 7.6 ON SR 65

1.6 TO Lt. EDGE PAVEMENT ON SR 65 0.7' N. of E 18 E

S.L.M. 165+07 SR 65 / 921+85 SR 18



Reset P.K. Nail & washer at
INTERSECTION FROM NOTES
BY "STONE" ON 26 AUG 74.



PERSONNEL TITLE PERSONNEL TITLE

Stane

COUNTY Henry

DATE 8 Oct. 74

Michalek

S. R. #18

WEATHER Cool

Denno

SEC. Bartlow Twp

TEMP. 50°

Curtis

DESCRIPTION

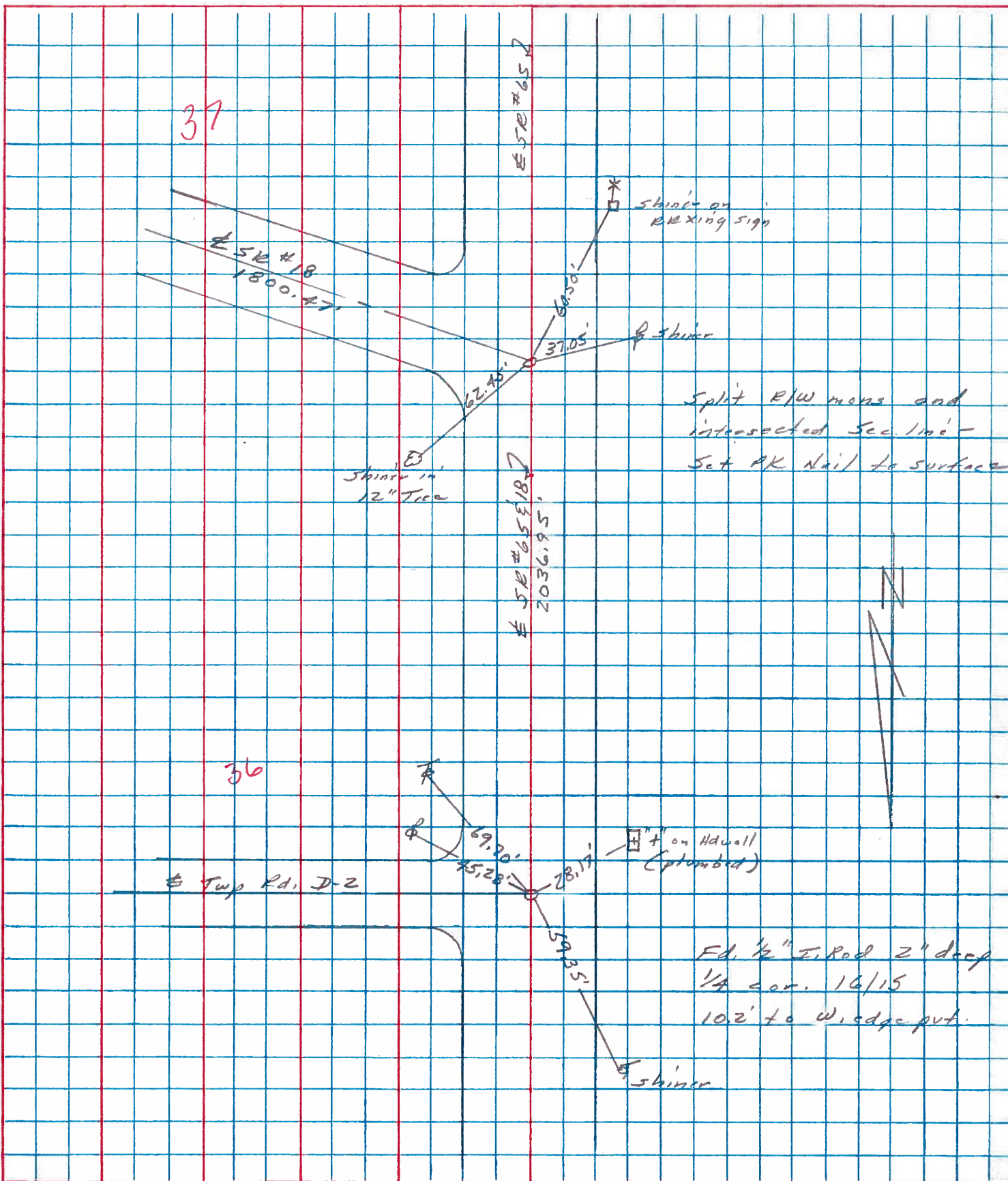
Refs. to Control Points

JOB NO.

LEFT

CENTER LINE

RIGHT



PERSONNEL TITLE PERSONNEL TITLE

Stone
 Michalak
 Deane
 Curtis

COUNTY Henry DATE 8 May 79

S. R. #18 WEATHER Cool

SEC. Bartlow Twp TEMP. 57°

DESCRIPTION

Alignment

JOB NO. 02999(10)

LEFT

CENTER LINE

RIGHT

