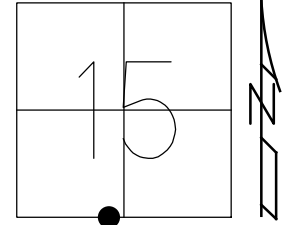


O.D.O.T. DISTRICT 2 SURVEY OFFICE (USE ONLY)

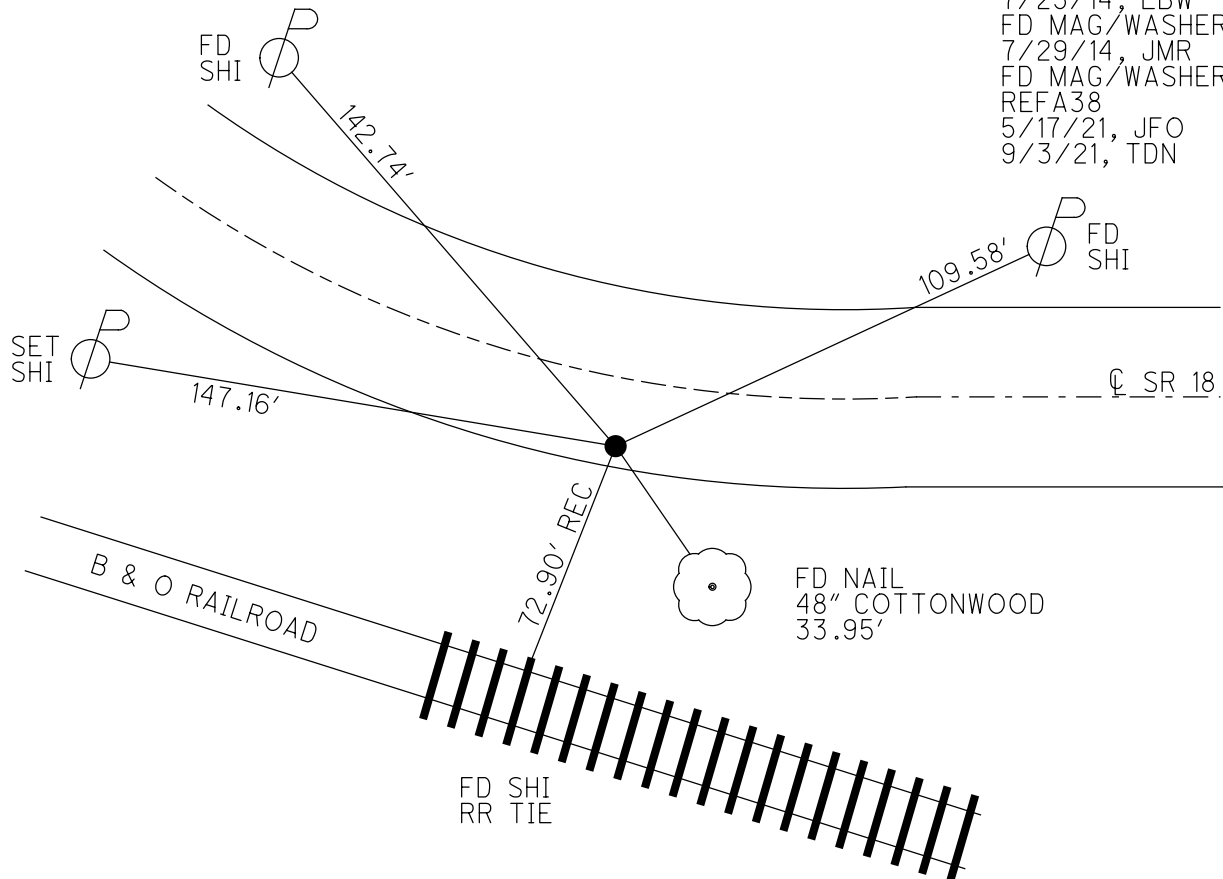
PERSONNEL \_\_\_\_\_ REFERENCE NO. 38 A SHEET 2 OF 17  
 NOTES AUBLE DATE 5/17/21 ROUTE SR 18  
 H.C. NIESE WEATHER CLOUDY COUNTY HENRY  
 R.C. O'DONNELL TEMP. 70° TOWNSHIP BARTLOW  
 \_\_\_\_\_ SECTION 15  
 DWG BY NIESE PID PAVETRAIN T 3 N R 8 E

TYPE MONUMENT MAG/WASHER  
 ON SURFACE - ~~BELOW~~ ON  
 OFFSET CL PAVEMENT 8.6' ~~LT~~ : RT  
1.7' TO RT EDGE PAVEMENT  
 STATION: 943+48.78

HORZ.DATUM: NAD83(2011) GEOID: NAVD88 2012A  
 GRID: NORTHING: 565911.906 EASTING: 1574776.021



RECORD:  
 FD P.K./WASHER  
 9/16/02, MB  
 11/16/12, SDC  
 11/20/12, SDC  
 4/14/14, TMR  
 4/15/14, TMR  
 SET MAG/WASHER  
 7/25/14, EBW  
 FD MAG/WASHER  
 7/29/14, JMR  
 FD MAG/WASHER  
 REFA38  
 5/17/21, JFO  
 9/3/21, TDN

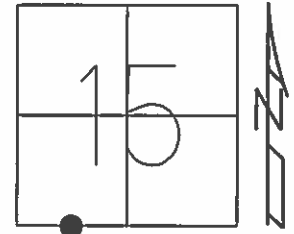


O.D.O.T. DISTRICT 2 SURVEY OFFICE (USE ONLY)

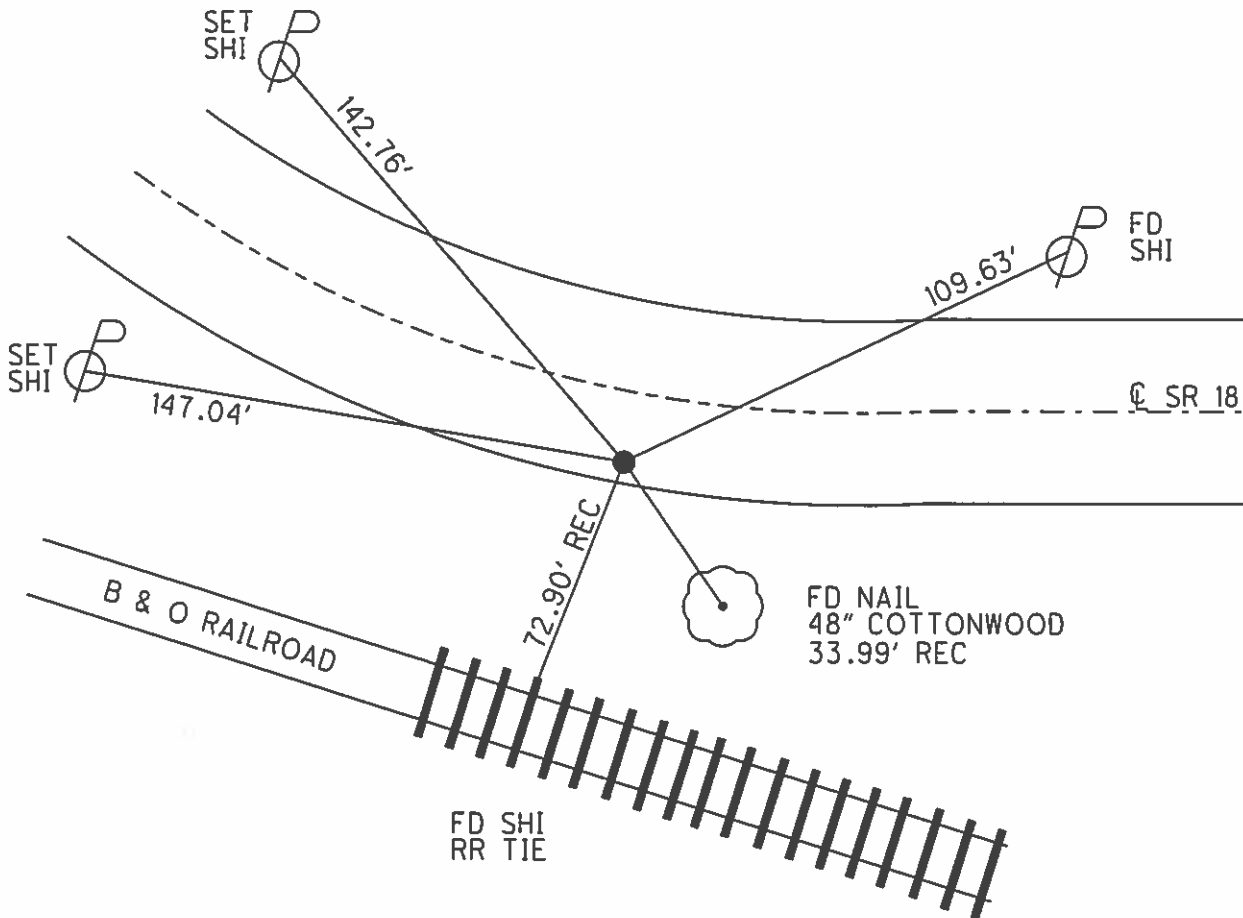
PERSONNEL \_\_\_\_\_ REFERENCE NO. 38 A SHEET 1 OF 16  
 NOTES RHOADES DATE 4/14/14 ROUTE SR 18  
 H.C. ROUSOS WEATHER CLOUDY COUNTY HENRY  
 R.C. RHOADES TEMP. 58° TOWNSHIP BARTLOW  
 \_\_\_\_\_ SECTION 15  
 \_\_\_\_\_ T 3 N R 8 E

TYPE MONUMENT PK/WASHER  
 ON SURFACE - ~~BELOW~~ ON  
~~LEFT~~ - Q PAV'T - RIGHT 8.6'  
1.7' TO RT EDGE PAVEMENT  
 S.L.M. 943+48.78

Grid: Northing: 565911.829 Easting: 1574775.975



RECORD:  
 FD PK/WASHER      GPS, CLA38      SET MAG/WASHER  
 9/16/02, MB      11/20/12, SDC      7/25/14, EBW  
 FD PK/WASHER      GPS, REFA38      GPS, NEWREFA38  
 11/16/12, SDC      4/15/14, TMR      7/29/14, JMR



# O.D.O.T. DISTRICT 2 SURVEY OFFICE

PERSONNEL

REFERENCE NO. 38-A

SHEET 2 OF 3

NOTES Barnhisel

H.C. Canterbury

R.C. Barnhisel

DATE 9-16-02

WEATHER Sunny

TEMP. +70°

ROUTE 18

COUNTY Henry

TOWNSHIP Bartlow

SECTION 15

T 3 N R 8 E

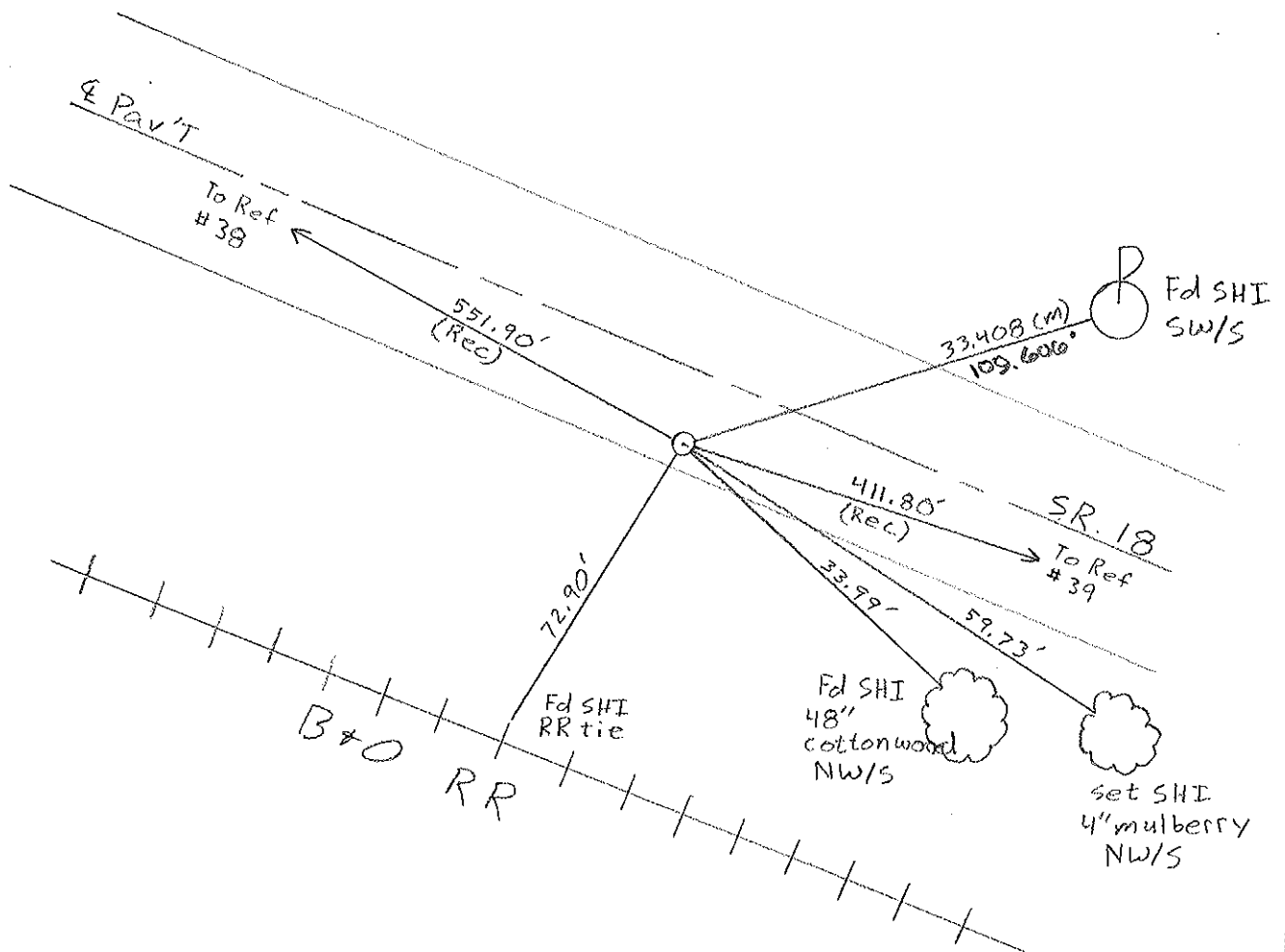
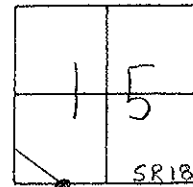
TYPE MONUMENT PK + Washer

ON SURFACE - ~~BELOW~~ on surface

LEFT - ~~C~~ PAV'T. - RIGHT 8.6'

L 7' TO RT EDGE PAVEMENT

S.L.M. 944+07



# O.D.O.T. DISTRICT 2 SURVEY OFFICE

PERSONNEL

REFERENCE NO. 38-A

SHEET 2 OF 3

NOTES BARNHISEL

H.C. KUSZ

R.C. BARNHISEL

OTTO

DATE 7-22-93

WEATHER SUNNY

TEMP. +70°

ROUTE 18

COUNTY HENRY

TOWNSHIP BARTLOW

SECTION 15

T3 NR 8 E

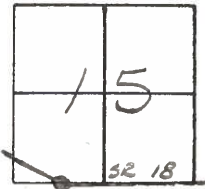
TYPE MONUMENT Sm RR Spk

ON SURFACE - ~~BELOW~~ yes

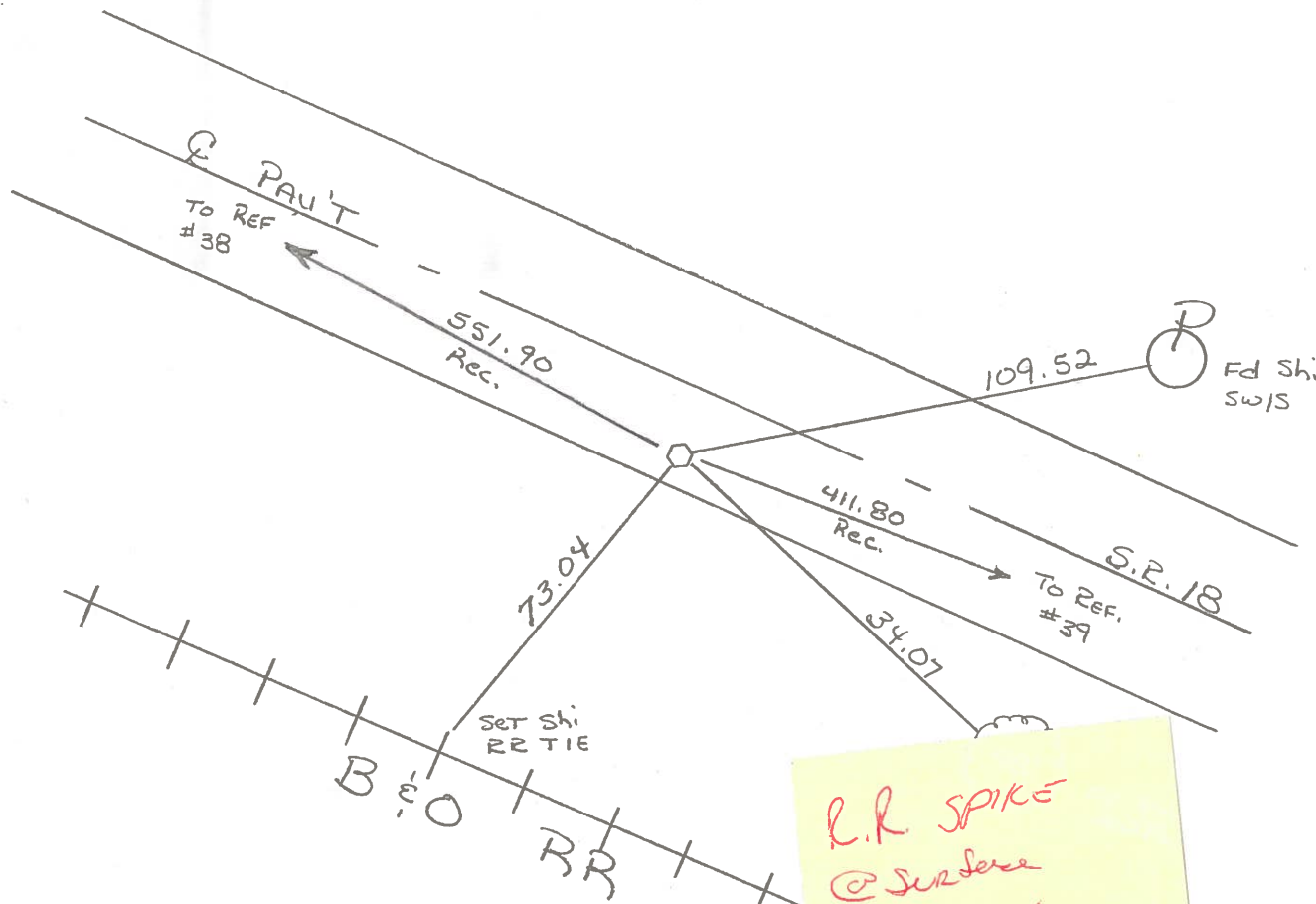
~~LEFT~~ - PAV'T. - RIGHT 7.8

2.4 TO RT EDGE PAVEMENT

S.L.M. 944+07



Reset PK & WASHER  
10-13-93  
M13



R.R. SPIKE  
@ SURFACE  
1974

# O.D.O.T. DISTRICT 2 SURVEY OFFICE

PERSONNEL

REFERENCE NO. 38-A

SHEET \_\_\_\_\_ OF \_\_\_\_\_

NOTES Hoffman

H.C. BARNHISEL

R.C. LOEHRKE

DATE 5-15-85

WEATHER cloudy

TEMP. 70°

ROUTE SR 18

COUNTY HENRY

TOWNSHIP BARTLOW

SECTION 15

T 3 N R 8 E

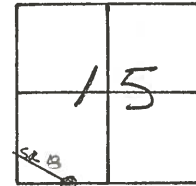
TYPE MONUMENT small R.R. spike

ON SURFACE - BELOW 3"

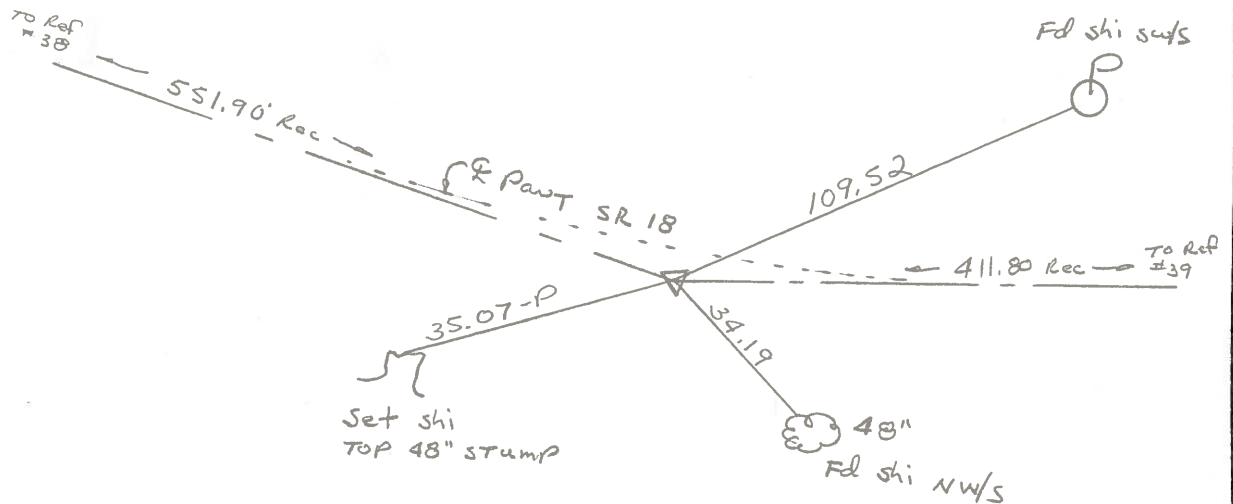
LEFT - C PAV'T. - RIGHT 8.1

1.5 TO RT. EDGE PAVEMENT

S.L.M. 945+29



Set Sm/RR spike  
 6-27-85  
 MDB



PERSONNEL TITLE PERSONNEL TITLE

COUNTY Henry DATE 8 Oct. 74

Stone  
Michaelole

S. R. #18 WEATHER Cool

Danna  
Curtis

SEC. Bartlow Twp. TEMP. 50°

DESCRIPTION

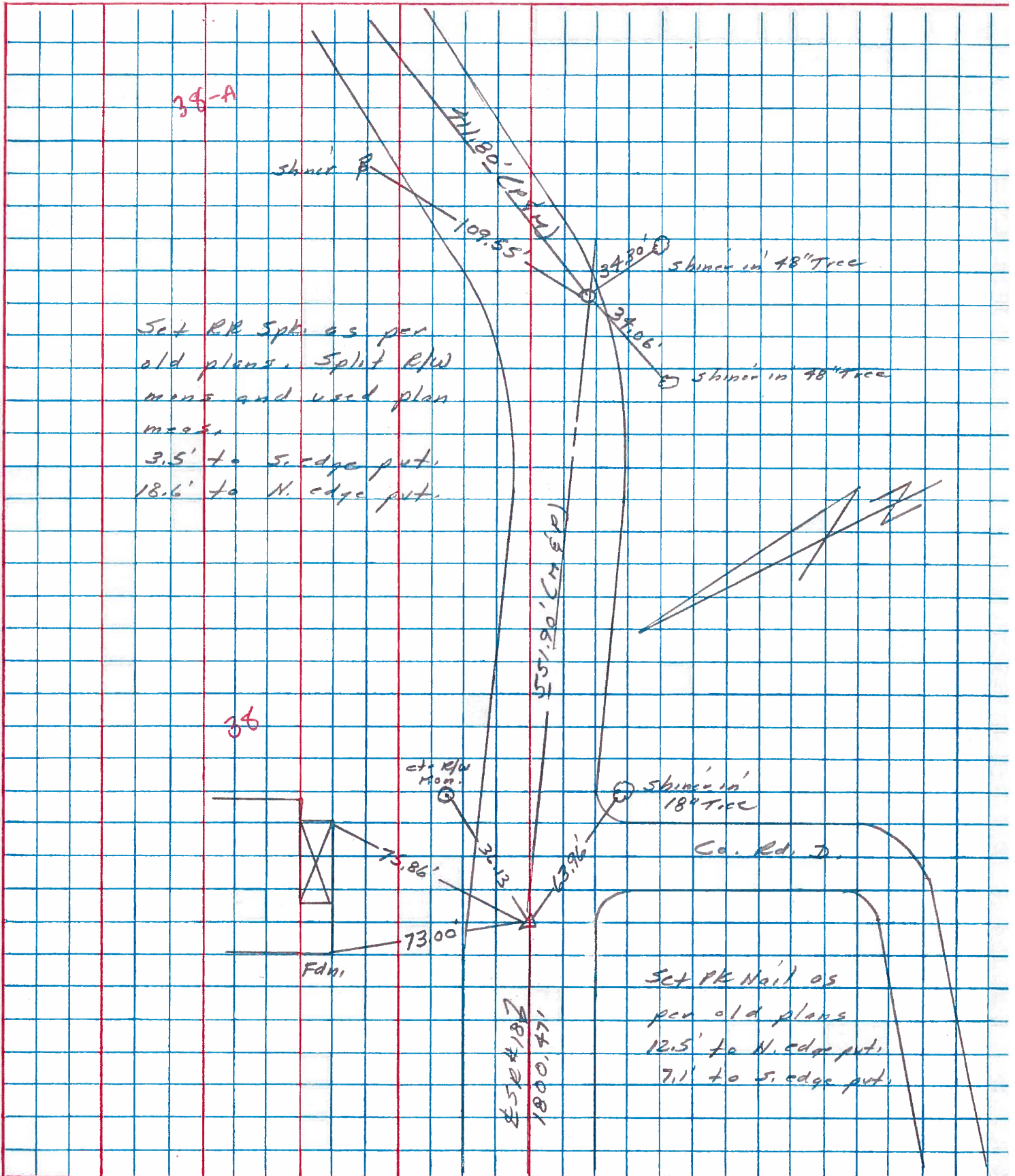
Refs. to Control Points

JOB NO.

LEFT

CENTER LINE

RIGHT



PERSONNEL	TITLE	PERSONNEL	TITLE	COUNTY	DATE
Stone				Henry	26 Aug 79
Michalek				S. R. #18	WEATHER Mild
Dennis				SEC. Bartlow Twp.	TEMP. 72°
Curtis					

DESCRIPTION \_\_\_\_\_ *Alignment* \_\_\_\_\_ JOB NO. 02999(0)

LEFT CENTER LINE RIGHT

