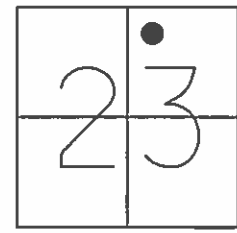


O.D.O.T. DISTRICT 2 SURVEY OFFICE (USE ONLY)

PERSONNEL _____ REFERENCE NO. 41 SHEET 6 OF 16
 NOTES RHOADES DATE 4/14/14 ROUTE SR 18
 H.C. ROUSOS WEATHER CLOUDY COUNTY HENRY
 R.C. RHOADES TEMP. 58° TOWNSHIP BARTLOW
 _____ SECTION 23
 _____ T 3 N R 8 E

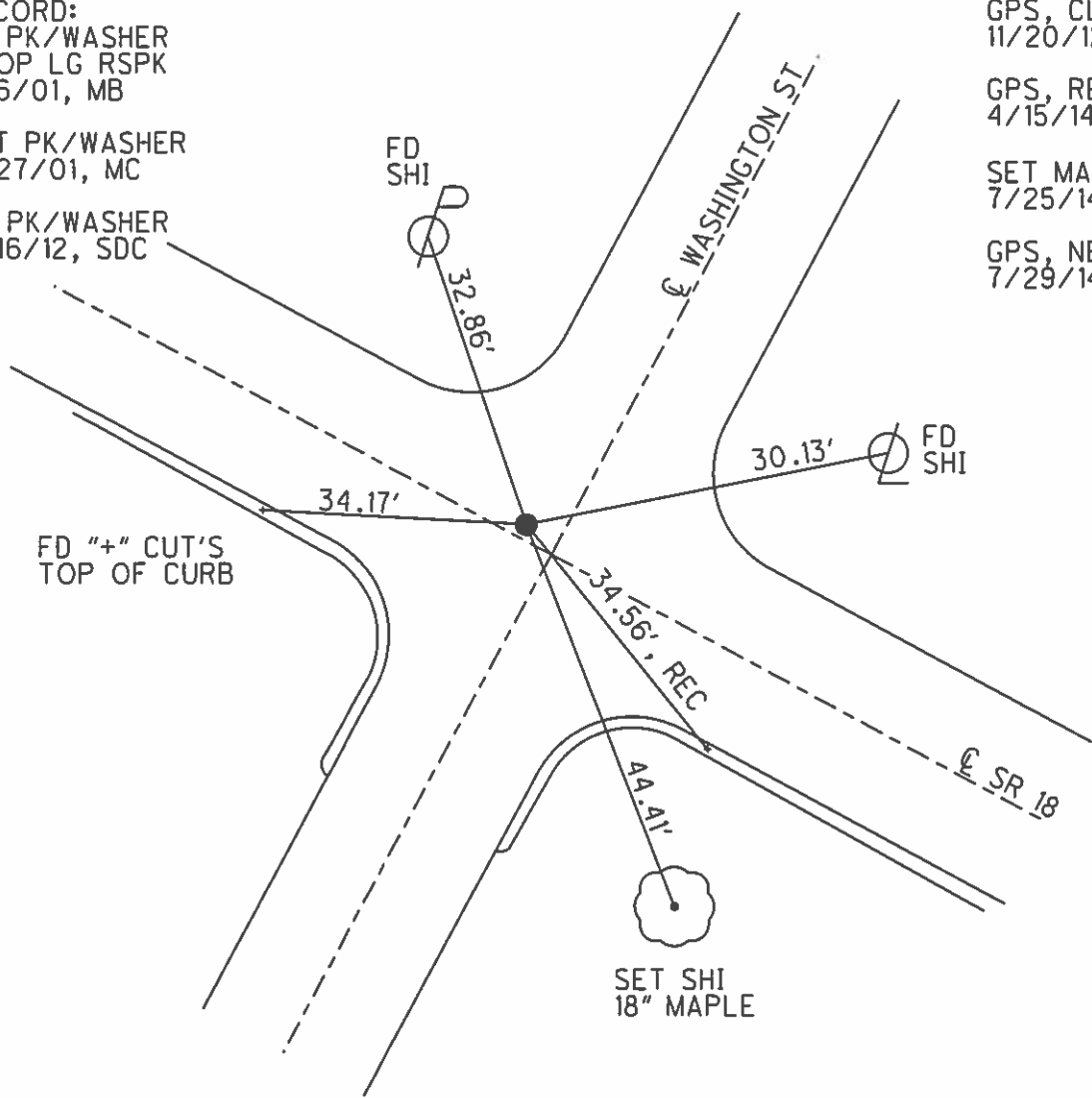
TYPE MONUMENT PK/WASHER
 ON SURFACE - ~~BELOW~~ ON _____
 LEFT - ☉ PAV'T - ~~RIGHT~~ 1.0'
 _____ TO _____ EDGE PAVEMENT
 S.L.M. 1004+97.8



Grid: Northing: 565527.498 Easting: 1580823.597

RECORD:
 FD PK/WASHER
 ATOP LG RSPK
 8/6/01, MB
 SET PK/WASHER
 11/27/01, MC
 FD PK/WASHER
 11/16/12, SDC

GPS, CL41
 11/20/12, SDC
 GPS, REF41
 4/15/14, TMR
 SET MAG/WASHER
 7/25/14, EBW
 GPS, NEWREF41
 7/29/14, JMR



O.D.O.T. DISTRICT 2 SURVEY OFFICE

PERSONNEL

REFERENCE NO. 41

SHEET 4 OF 14

NOTES CANTERBURY

H.C. BARNHISEL

R.C. MOSEK

DATE 8/6/01

WEATHER SUN

TEMP. + 93°

ROUTE 18

COUNTY HENRY

TOWNSHIP BARTLOW

SECTION 23

T. 3 N. R. 8 E.

TYPE MONUMENT P.K. + WASHER ATOP LG. R.R. SPK.

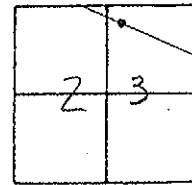
ON SURFACE - BELOW SURFACE

LEFT - ☒ PAV'T. - RIGHT 1.0' LT ☒

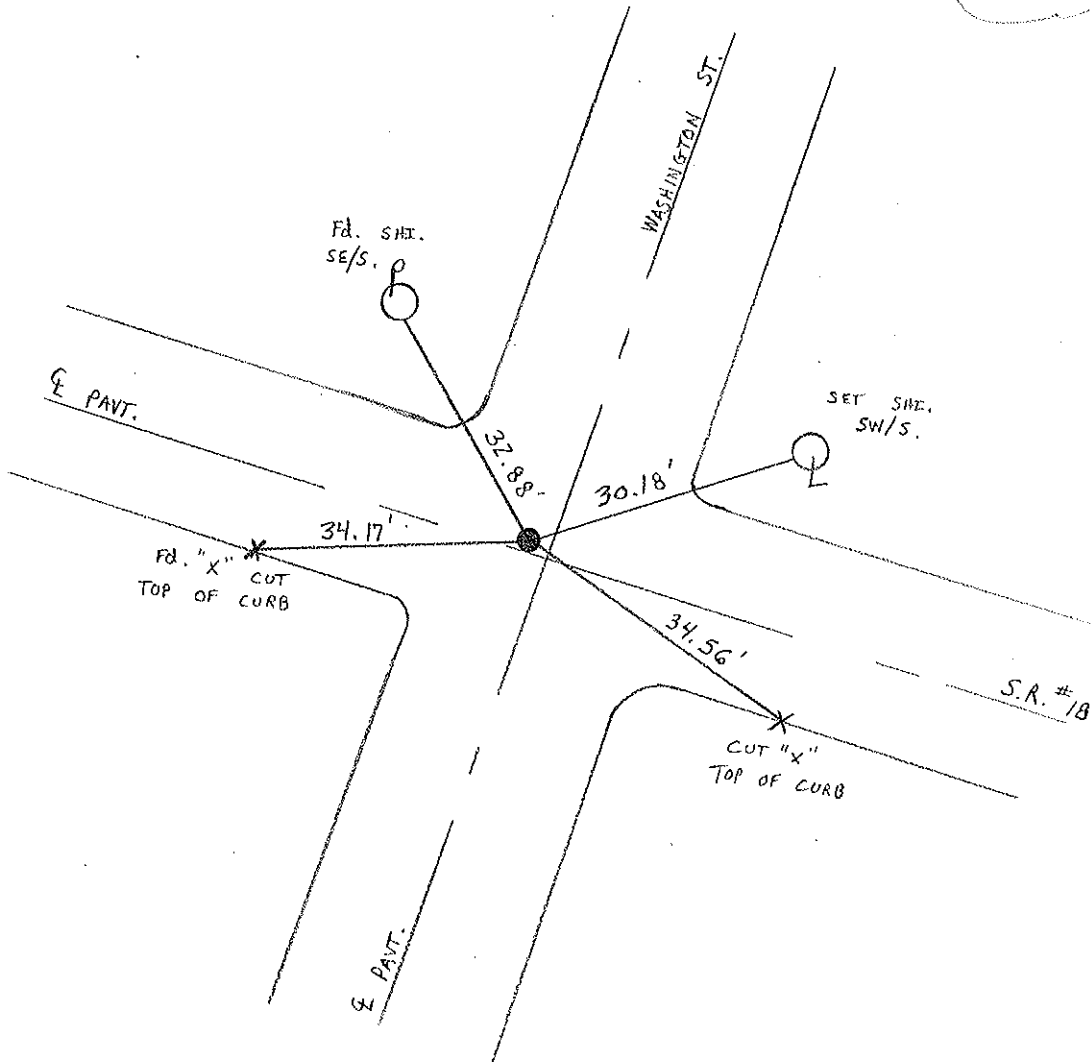
— TO — EDGE PAVEMENT

S.L.M. 1004 + 91

2.0' W. OF WASHINGTON ST. N.



RESET PK/WASHER
 11-27-01
 M.R.G.



O.D.O.T. DISTRICT 2 SURVEY OFFICE

PERSONNEL _____

REFERENCE NO. 41

SHEET _____ OF _____

NOTES BAENHISEL

H.C. _____

DATE 10-19-90

ROUTE 18

R.C. HOFFMAN

WEATHER CLOUDY

COUNTY HENRY

TEMP. +43°

TOWNSHIP BARTLOW

SECTION 23

T 3 N R 8 E

TYPE MONUMENT Lg RR Spk

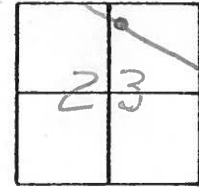
ON SURFACE - BELOW 1"

LEFT - & PAV'T. - RIGHT yes

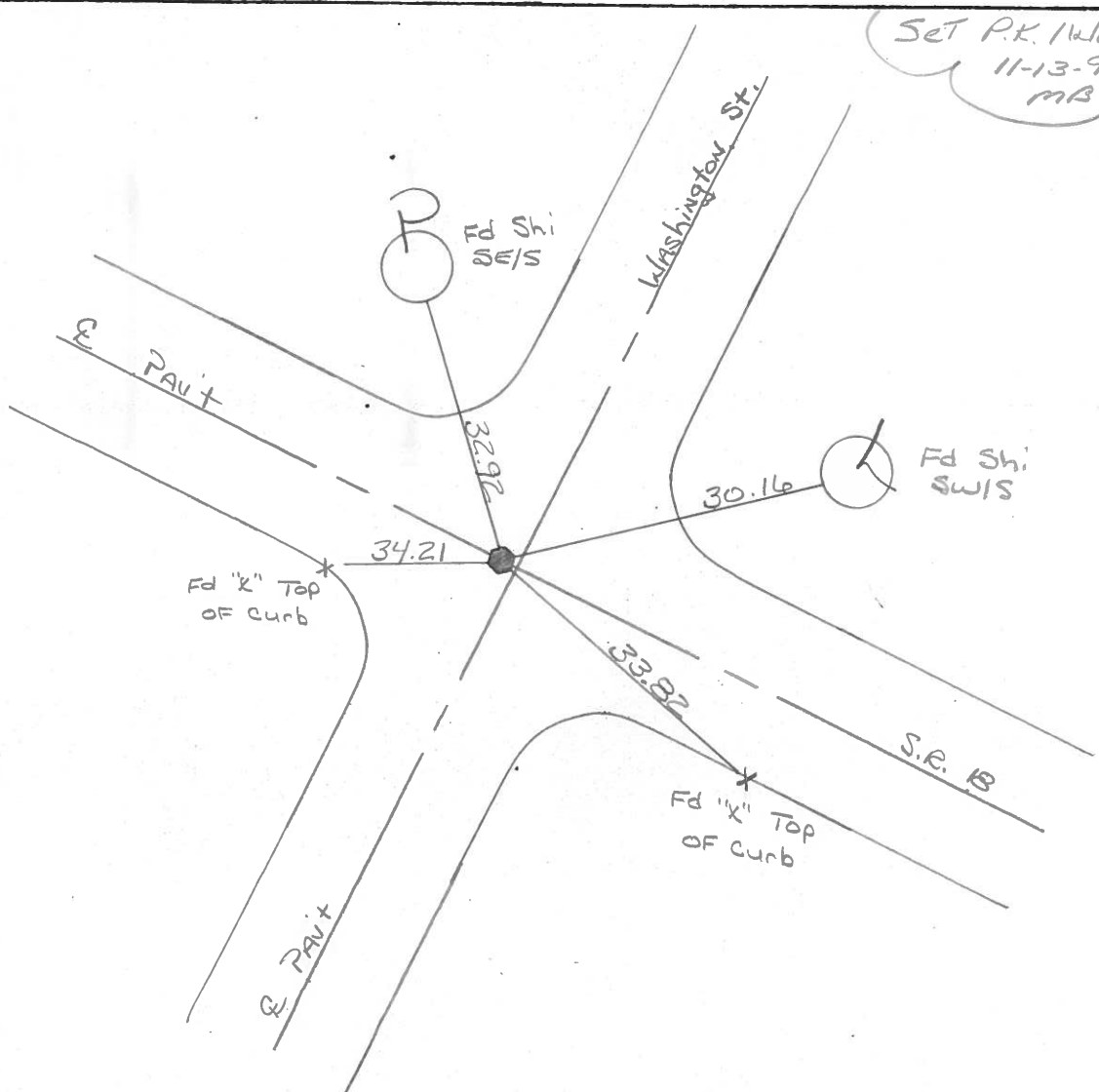
— TO — EDGE PAVEMENT

S.L.M. 1004+91

1.5 W. OF E WASH. ST.



Set P.K. Washer
11-13-90
MB



County HENRY S.R. 18

Date April 7, 83

Township BARTLOW

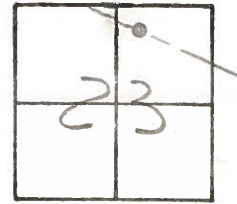
Weather OVERCAST

Section 23

Temp. +40°

T3N, R8E

Personnel HOFFMAN



#41

LOEHRKE
HOUSEHOLDER
BARNHISEL

Fd R.R. SPK @ SURFACE, ORIGIN UNKNOWN
OXL & PAUT SR 18
1.5' West of & PAUT WASHINGTON ST. SOUTH

SLM 1004 + 91

SET P.K./WASHER
9-20-83
C.L.

