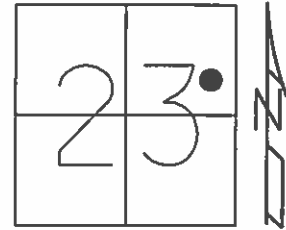


O.D.O.T. DISTRICT 2 SURVEY OFFICE (USE ONLY)

PERSONNEL _____ REFERENCE NO. 41 A SHEET 7 OF 16

NOTES RHOADES DATE 4/14/14 ROUTE SR 18
 H.C. CODER WEATHER CLOUDY COUNTY HENRY
 R.C. RHOADES TEMP. 58° TOWNSHIP BARTLOW
 _____ SECTION 23
 _____ T 3 N R 8 E

TYPE MONUMENT MAG/WASHER
 ON SURFACE - ~~BELOW~~ ON
 LEFT - ☉ PAV'T - RIGHT ON
25' TO LT EDGE PAVEMENT
 S.L.M. 1030+94.5



Grid: Northing: 564199.415 Easting: 1583055.226

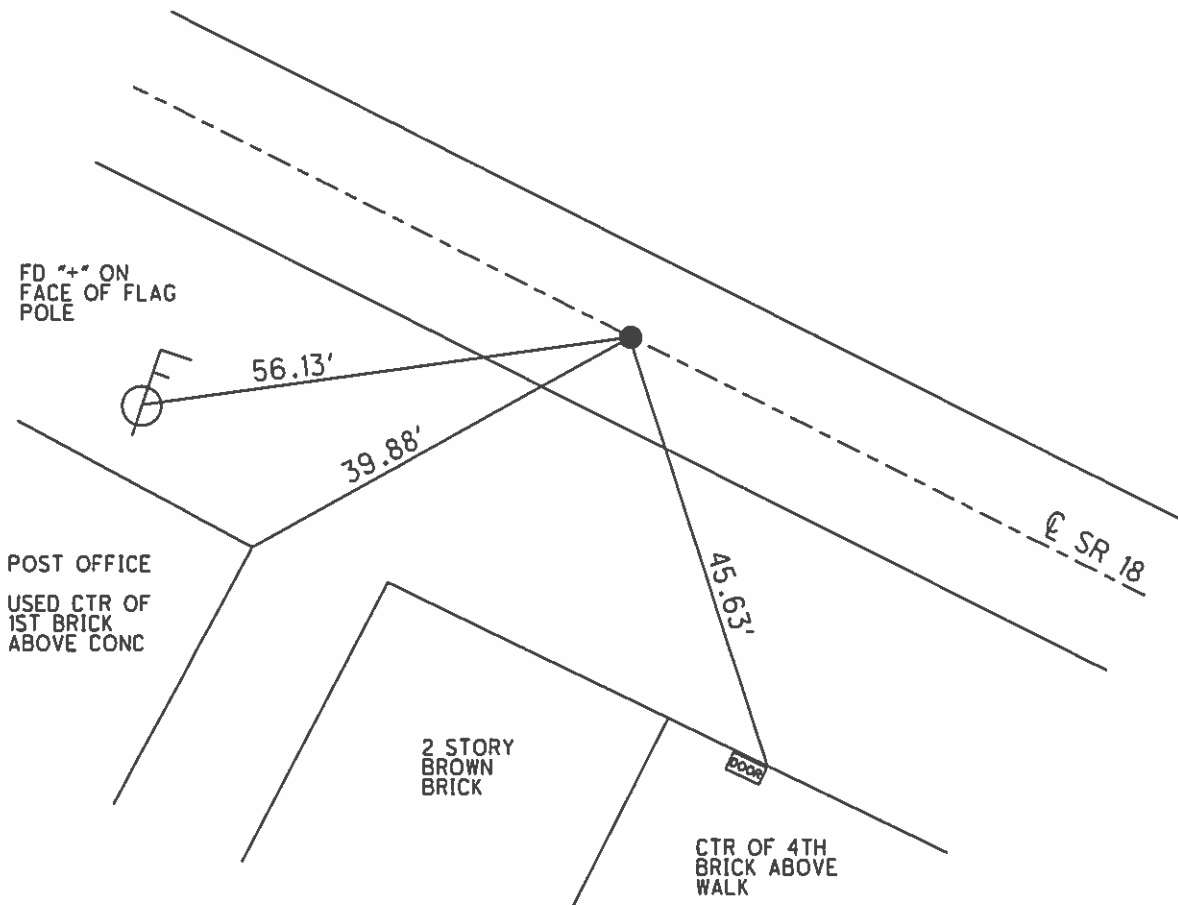
RECORD:
 FD STONE SET RSPK
 AT SURFACE.

FD PK/WASHER
 ATOP LG RSPK
 8/8/01, MB

DNF PK/WASHER
 RESET W/ MAG/WASHER
 USING EXISTING TIES.
 GPS, CLAI 41
 11/20/12, SDC

RESET LG RSPK 10/19/90
 FROM NOTES BY "STONE"
 5/18/73. STA 1030+94.5

SET PK/WASHER
 11/27/01, MC



O.D.O.T. DISTRICT 2 SURVEY OFFICE

PERSONNEL

REFERENCE NO. 41-A1

SHEET 6 OF 14

NOTES CANTERBURY

H.C. BARNHISEL

R.C. MOSER

DATE 8/8/01

WEATHER SUN

TEMP. +80°

ROUTE 18

COUNTY HENRY

TOWNSHIP BARTLOW

SECTION 23

T 3 N R 8 E

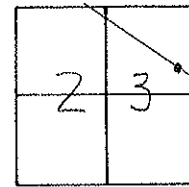
TYPE MONUMENT P.K + WASHER ABOVE LG. R.R. SPK

ON SURFACE - BELOW SURFACE

~~LEFT - & PAV'T. - RIGHT~~ ON E

~~25' TO LT EDGE PAVEMENT CURB~~

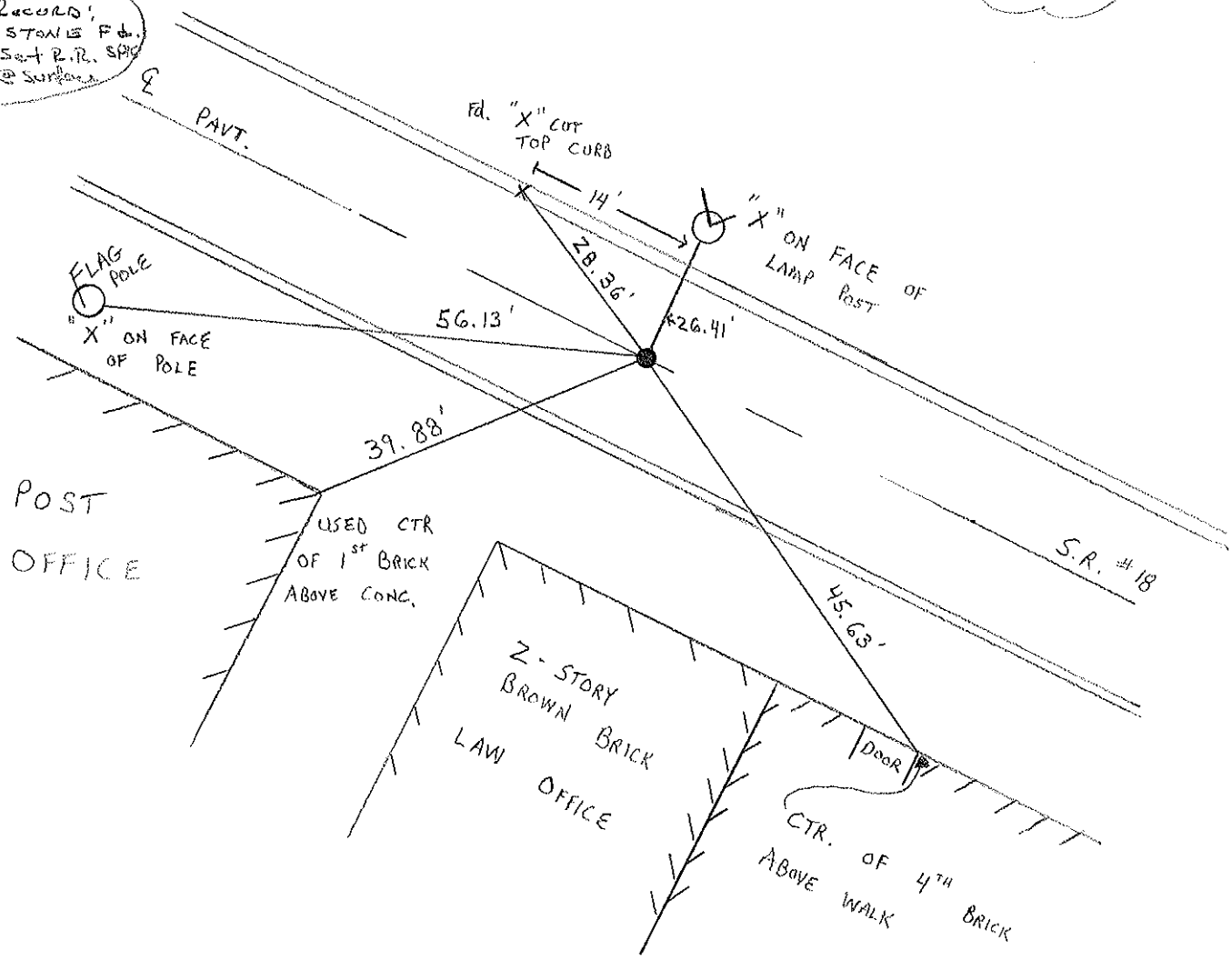
S.L.M. 1030 + 89



RECORD: RESET LG R.R. SPIKE
10-19-90 FROM NOTES BY "STONE"
MAY 18, 1973, STA 1030 + 94.5

RESET PK/WASHER
11-27-01
M.R.C.

RECORD:
STONE Fd.
Set R.R. SPIKE
@ Surface



O.D.O.T. DISTRICT 2 SURVEY OFFICE

PERSONNEL

REFERENCE NO. 41-A1

SHEET OF

NOTES BARNHISEL

H.C.

R.C. HOFFMAN

DATE 10-19-90

WEATHER Cloudy

TEMP. +43°

ROUTE 18

COUNTY HENRY

TOWNSHIP BARTLOW

SECTION 23

T 3 N R 8 E

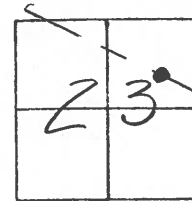
TYPE MONUMENT Lg RR Spk

ON SURFACE - BELOW yes

LEFT - & PAV'T. - RIGHT yes

25.0 TO LT EDGE PAVEMENT

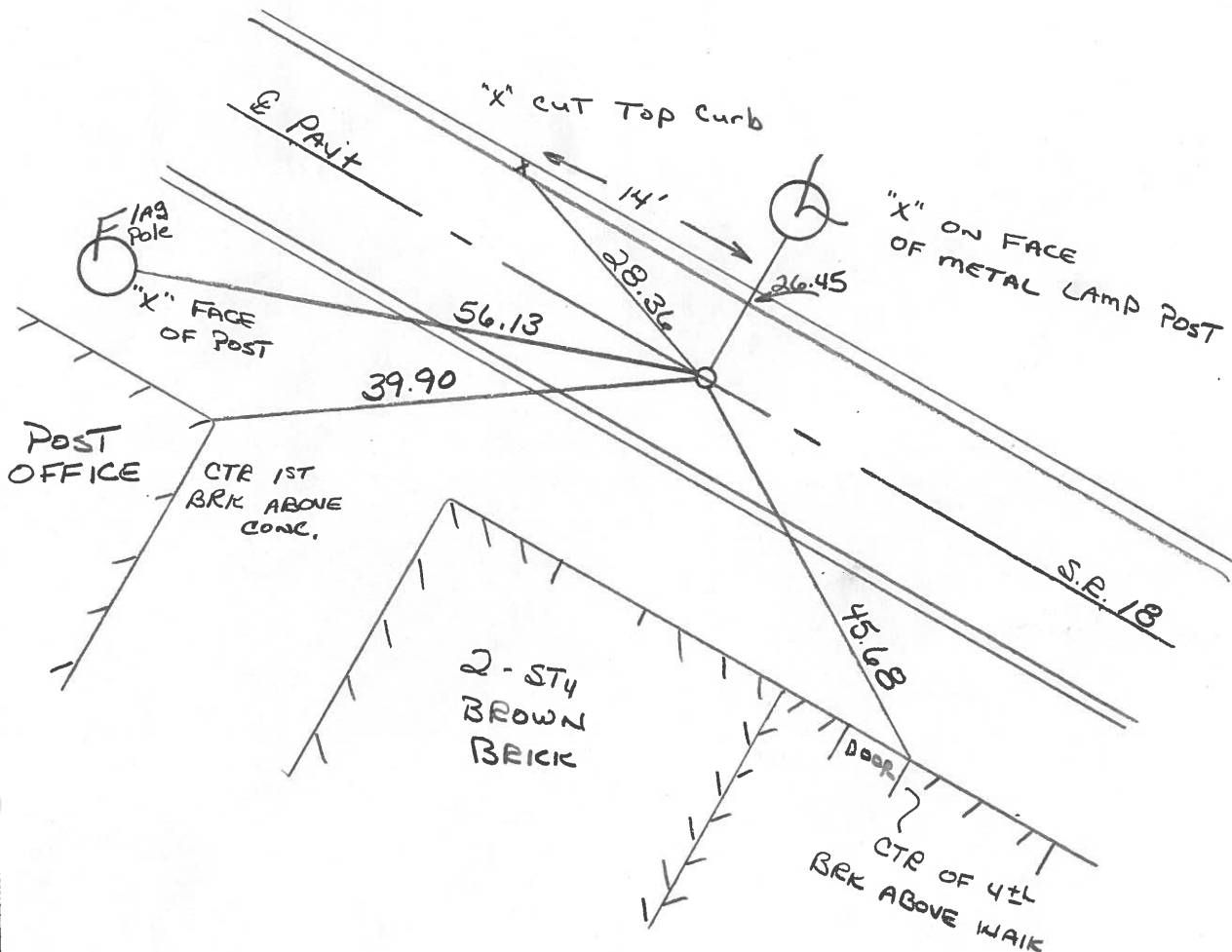
S.L.M. 1030 + 89



NOTE: Reset Lg RR Spk
10-19-90 From Notes By
"STONE" MAY 18, 1973
1030 + 94.5.

RECORD:
STONE Fd,
SET RR Spk SURFACE

SET P.K. /ulasher
11-13-90
MB



PERSONNEL TITLE PERSONNEL TITLE

Stone _____
Michalek _____
Dunn _____
Curtis _____

COUNTY Henry DATE 18 May 73

S. R. #18 WEATHER Fair

SEC. Deshler TEMP. 62'

DESCRIPTION References to Control Points JOB NO. _____

