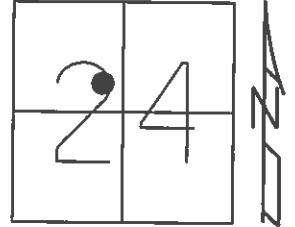


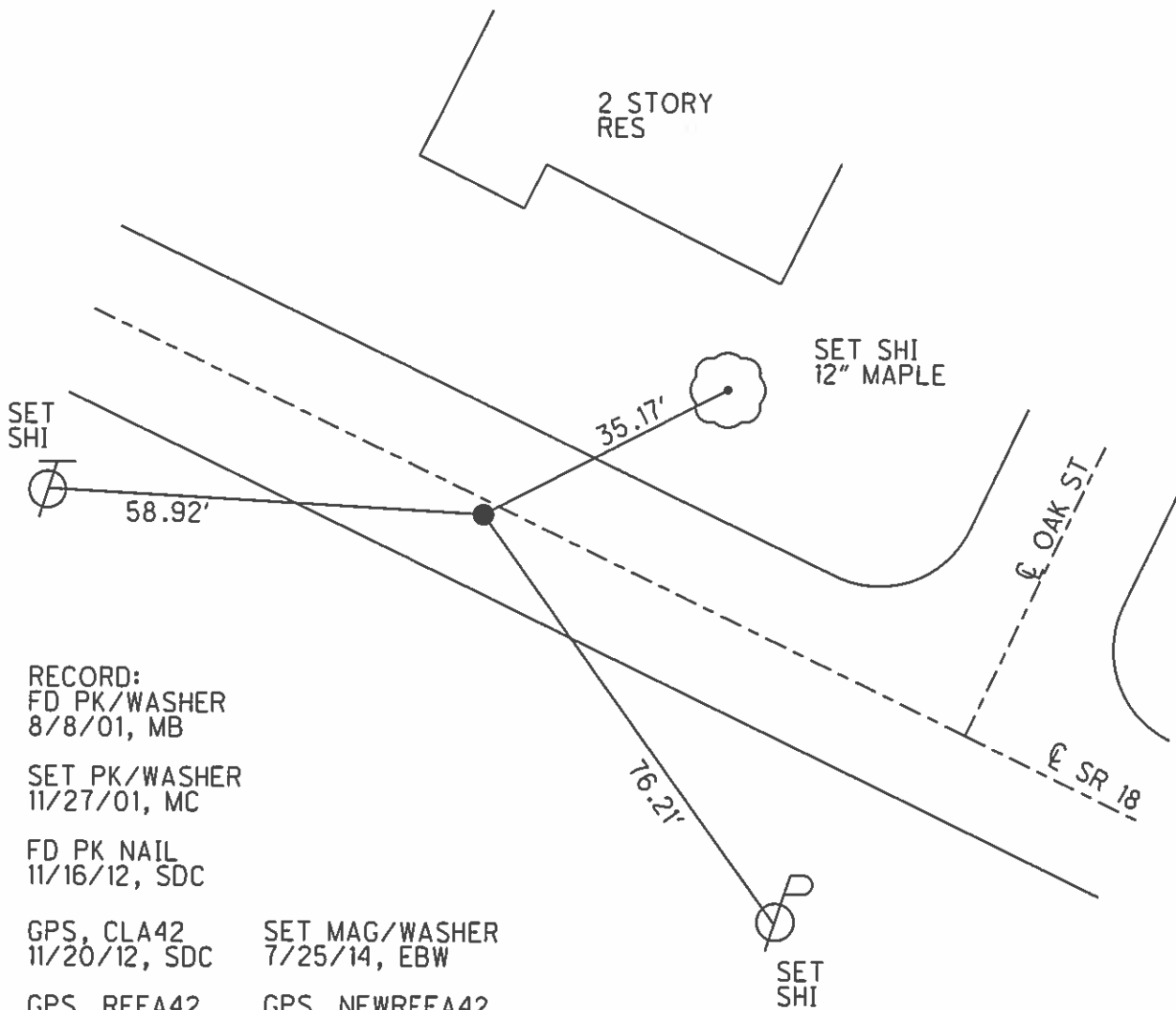
O.D.O.T. DISTRICT 2 SURVEY OFFICE (USE ONLY)

PERSONNEL \_\_\_\_\_ REFERENCE NO. 42 A SHEET 10 OF 16  
 NOTES RHOADES DATE 4/14/14 ROUTE SR 18  
 H.C. ROUSOS WEATHER CLOUDY COUNTY HENRY  
 R.C. RHOADES TEMP. 58° TOWNSHIP BARTLOW  
 \_\_\_\_\_ SECTION 24  
 \_\_\_\_\_ T 3 N R 8 E

TYPE MONUMENT PK NAIL  
 ON SURFACE - ~~BELOW~~ ON  
~~LEFT~~ - CL PAV'T - RIGHT 1.0'  
9.1' TO RT EDGE PAVEMENT  
 S.L.M. 1053+09.2



Grid: Northing: 563731.161 Easting: 1584787.769



RECORD:  
 FD PK/WASHER  
 8/8/01, MB

SET PK/WASHER  
 11/27/01, MC

FD PK NAIL  
 11/16/12, SDC

GPS, CLA42  
 11/20/12, SDC

SET MAG/WASHER  
 7/25/14, EBW

GPS, REFA42  
 4/15/14, TMR

GPS, NEWREFA42  
 7/29/14, JMR

# O.D.O.T. DISTRICT 2 SURVEY OFFICE

PERSONNEL

REFERENCE NO. 42-A

SHEET 9 OF 14

NOTES CANTERBURY

H.C. BARNHISEL

R.C. MOSEK

DRAWN BY:  
Kevin MOSEK

DATE 8-8-01

WEATHER Sunny

TEMP. +80°F

ROUTE 18

COUNTY HENRY

TOWNSHIP BARKLOW

SECTION 23

T3 N R 8 E

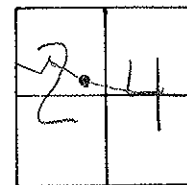
TYPE MONUMENT PK/WASHER

ON SURFACE - BELOW ON

LEFT - C PAV'T. - RIGHT 1.0' RT.

9.1' TO RT. EDGE PAVEMENT

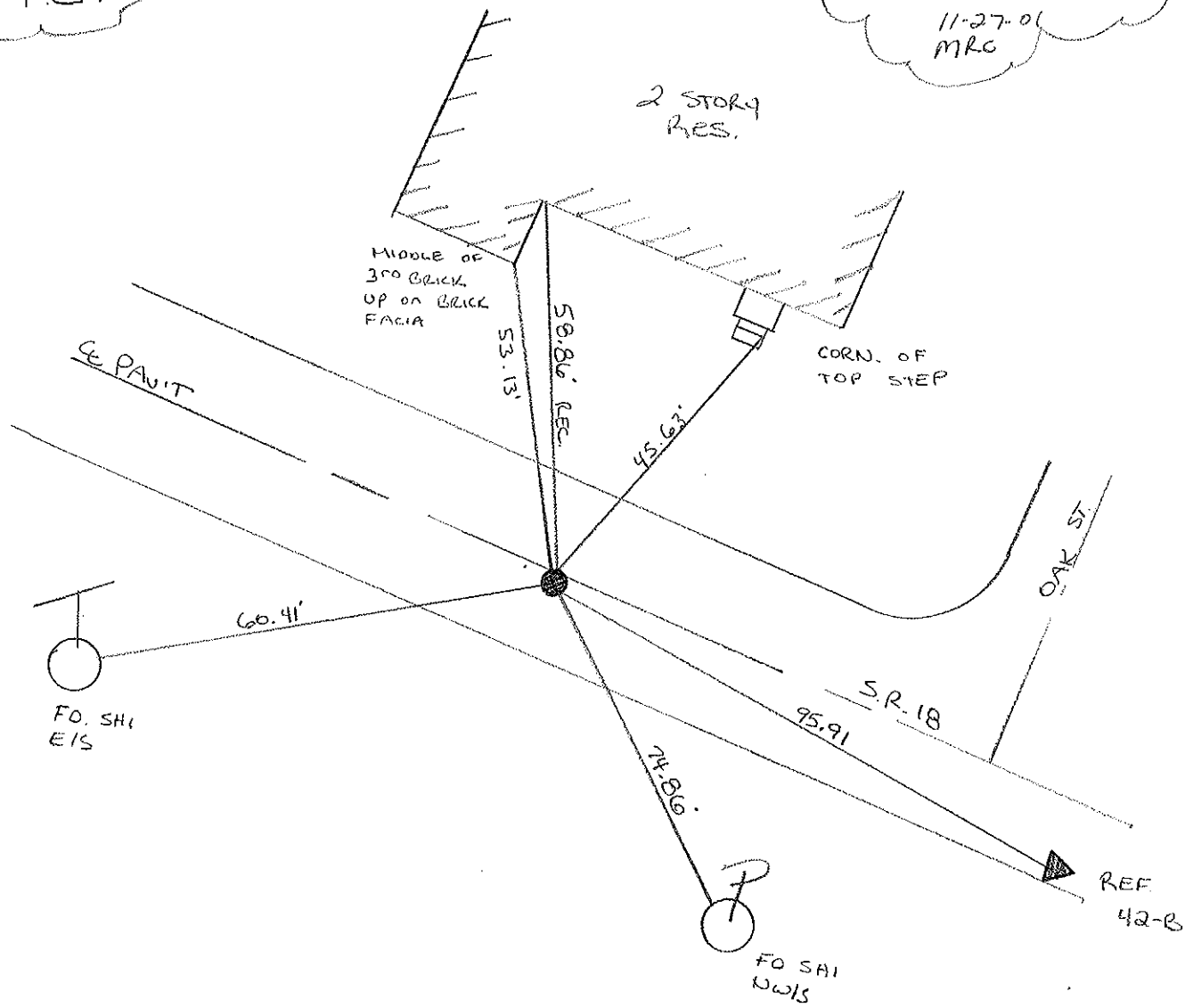
S.L.M. 1053+03



PC.

RESET PK/WASHER

11-27-01  
MRC



# O.D.O.T. DISTRICT 2 SURVEY OFFICE

PERSONNEL

REFERENCE NO. 42-A

SHEET \_\_\_\_\_ OF \_\_\_\_\_

NOTES BARNHISEL

H.C. " "

R.C. HOFFMAN

DATE 10-19-90

WEATHER cloudy

TEMP. +43°

ROUTE 18

COUNTY HENRY

TOWNSHIP BARTLOW

SECTION 24

T 3 N R 8 E

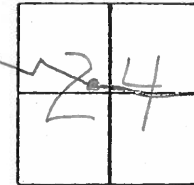
TYPE MONUMENT P.K. & Washer

ON SURFACE - BELOW yes

LEFT - & PAV'T. - RIGHT 0.6

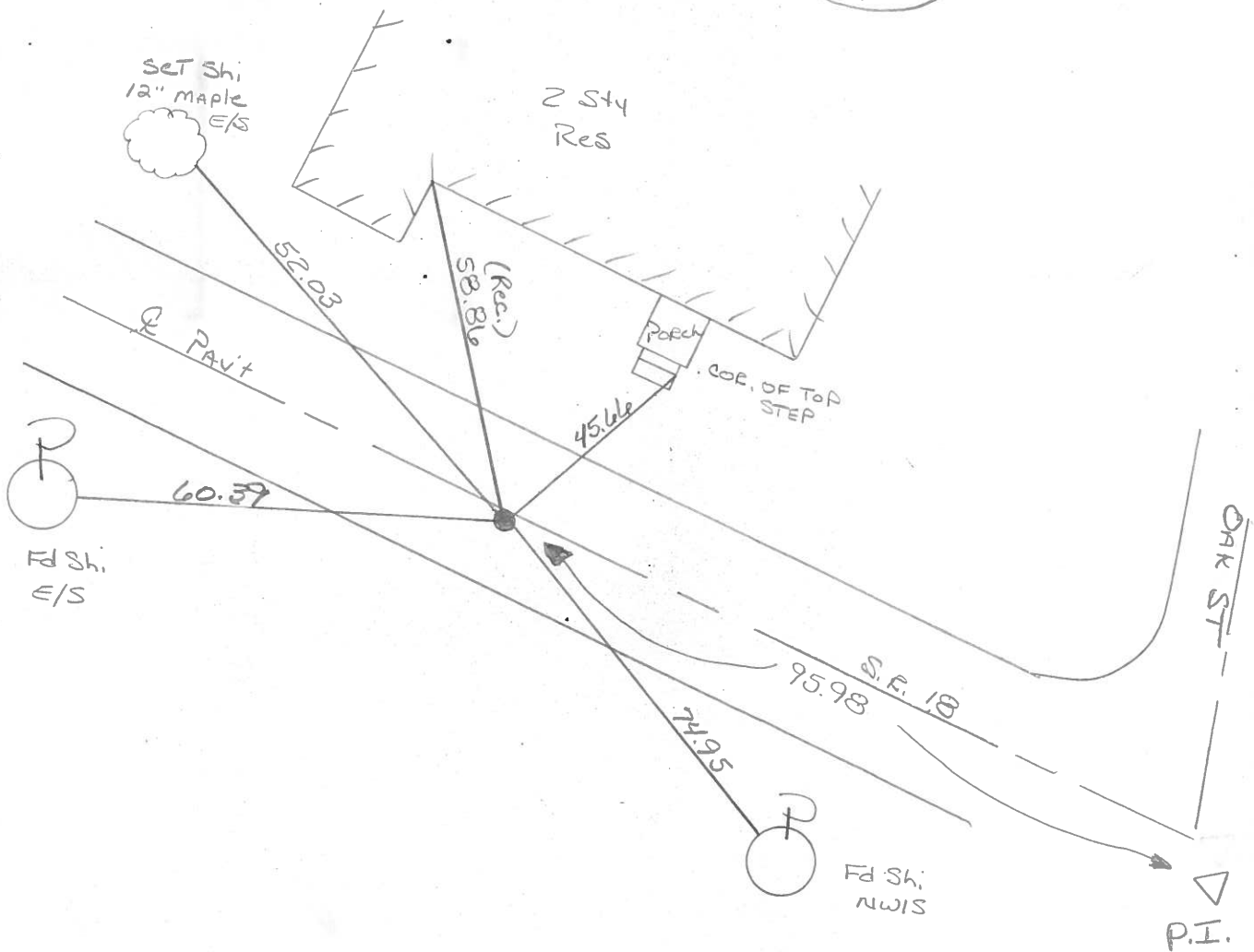
12.1 TO RT EDGE PAVEMENT

S.L.M. 1053+03



P.C.

Set P.K./Washer  
11-13-90  
mB



Q.D.O.T. DISTRICT 2 SURVEY OFFICE

SHEET \_\_\_\_\_ OF \_\_\_\_\_

County Henry S.R. 18

Date 9 May 83

Township Bartlow

Weather Clear

Section 24

Temp. 56°

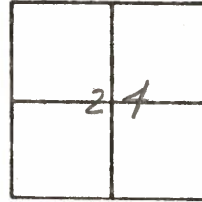
T.N, R.E

Personnel L. Stone

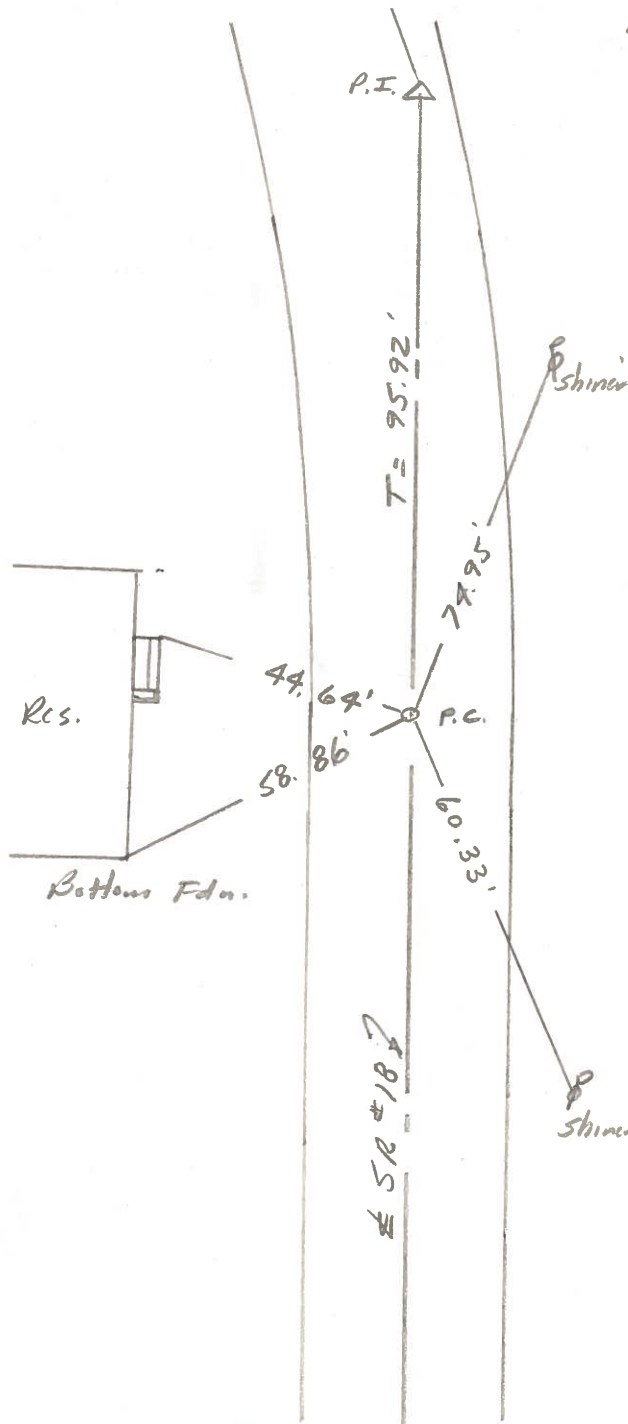
P. Newser

D. Curtis

42-A



REF. NO.



SET P.K. NAIL/WASHE  
9-20-83  
C.L.

St. 14.54, 1053+17.55 P.C.  
Set PK Nail as per new  
Curve data  
10.3' to N. edge put  
9.8' to S. edge put.