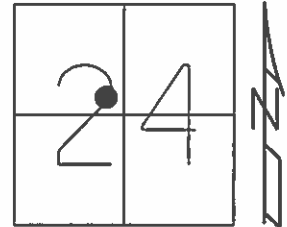


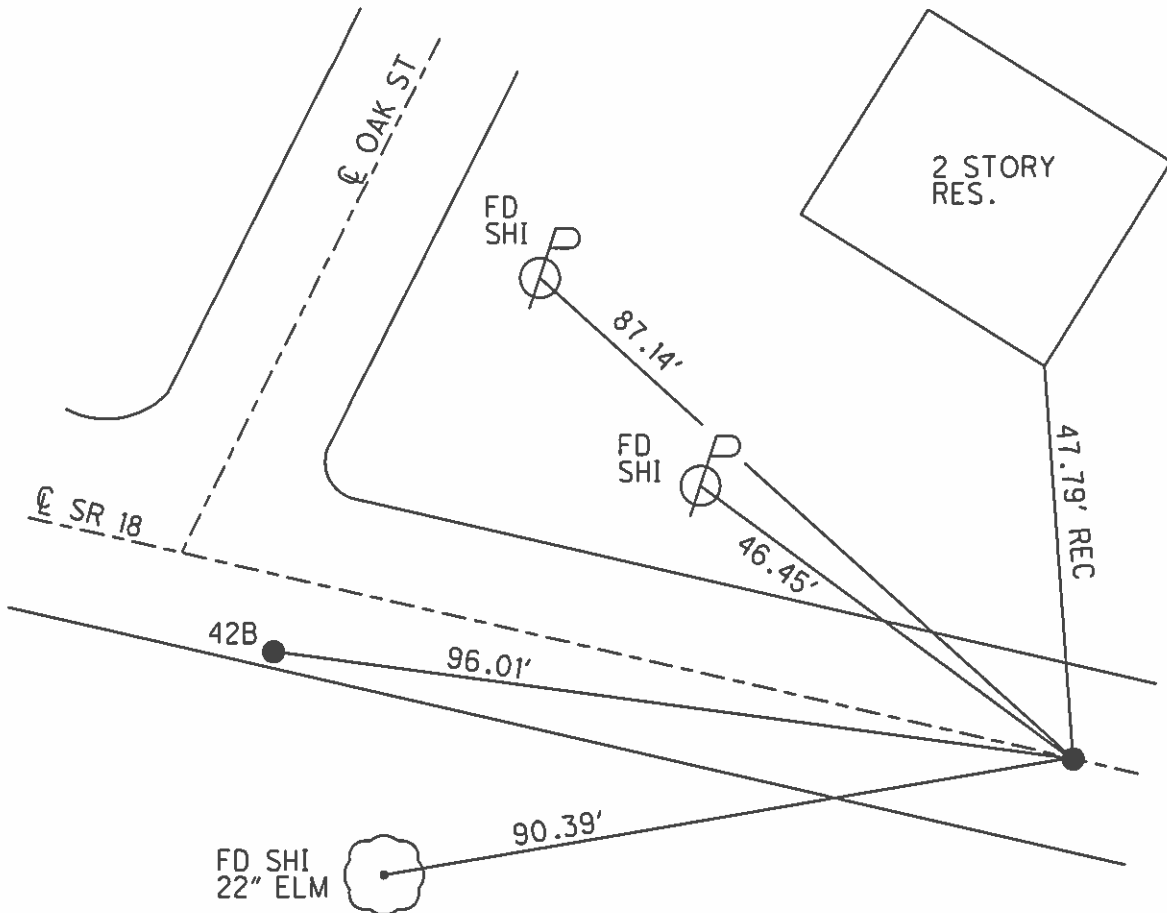
O.D.O.T. DISTRICT 2 SURVEY OFFICE (USE ONLY)

PERSONNEL _____ REFERENCE NO. 42 C SHEET 12 OF 16
 NOTES RHOADES DATE 4/14/14 ROUTE SR 18
 H.C. ROUSOS WEATHER CLOUDY COUNTY HENRY
 R.C. RHOADES TEMP. 58° TOWNSHIP BARTLOW
 _____ SECTION 24
 _____ T 3 N R 8 E

TYPE MONUMENT PK/WASHER
 ON SURFACE - ~~BELOW~~ ON
~~LEFT~~ - ☉ PAV'T - RIGHT 1.2'
8.7' TO RT EDGE PAVEMENT
 S.L.M. 1055+01.05
 Grid: Northing: 563662.331 Easting: 1584964.010



RECORD: PT	FD PK/WASHER 11/16/12	SET MAG/WASHER 7/25/14, EBW
FD PK/WASHER 8/8/01, MB	GPS, CLC42 11/20/12, SDC	GPS, NEWREFC42 7/29/14, JMR
SET PK/WASHER 11/27/01, MC	GPS, REFC42 4/15/14, TMR	



O.D.O.T. DISTRICT 2 SURVEY OFFICE

PERSONNEL

REFERENCE NO. 42-C

SHEET 11 OF 14

NOTES CANTERBURY

H.C. BARNHISEL

DATE 8-8-01

ROUTE 18

R.C. MOSEK

WEATHER Sunny

COUNTY HENRY

DRAWN BY: MOSER

TEMP. 78°F

TOWNSHIP BARTLOW

SECTION 24

T3 N R 8 E

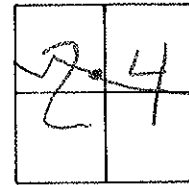
TYPE MONUMENT PK & WASHER

ON SURFACE BELOW C.N.

~~LEFT - C~~ PAV'T. - RIGHT 1.2' RT

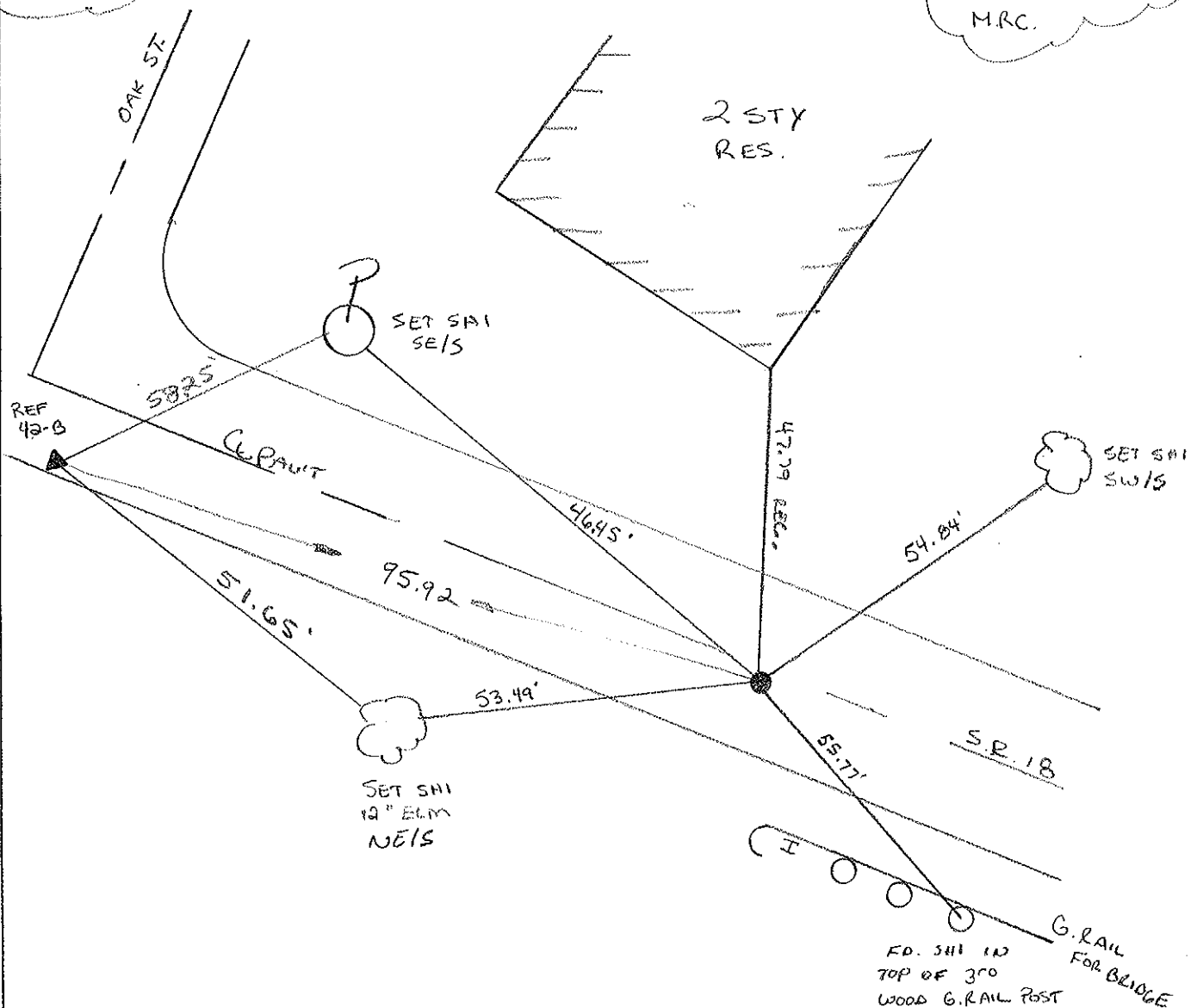
0.7 TO RT. EDGE PAVEMENT

S.L.M. 1054 + 95



P.T.

Reset PK-WASHER
11-27-01
M.R.C.



O.D.O.T. DISTRICT 2 SURVEY OFFICE

PERSONNEL

REFERENCE NO. 42-C

SHEET _____ OF _____

NOTES BARNHISEL

H.C. " "

R.C. HOFFMAN

DATE 10-19-90

WEATHER cloudy

TEMP. +43°

ROUTE 18

COUNTY HENRY

TOWNSHIP BAETLOW

SECTION 24

T 3 N R 8 E

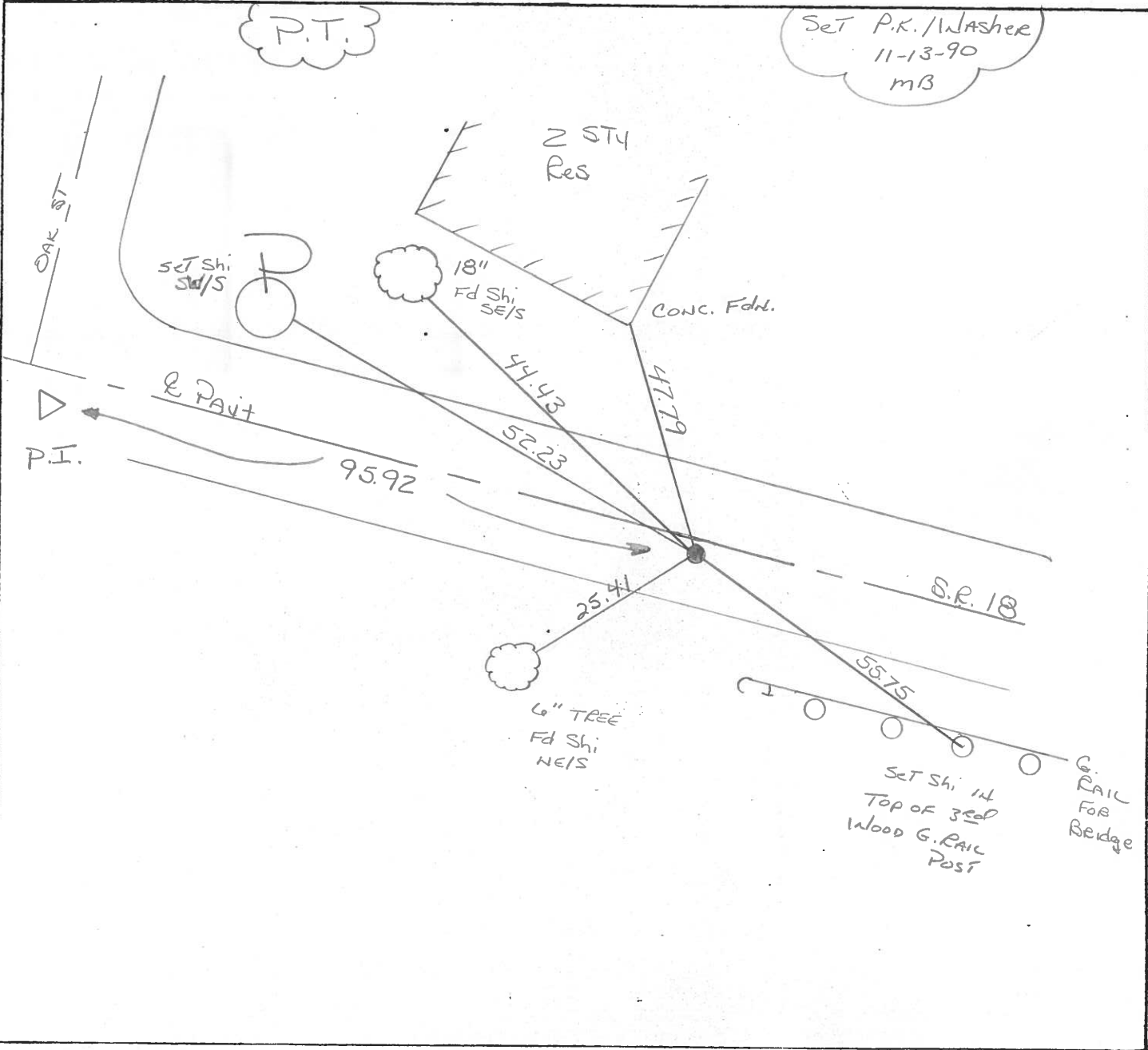
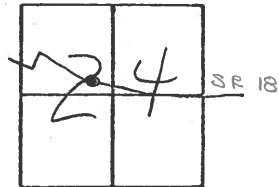
TYPE MONUMENT P.K. & Washee

ON SURFACE - BELOW yes

LEFT - € PAV'T. - RIGHT 1.5

9.0 TO RT EDGE PAVEMENT

S.L.M. 1054+95



Set P.K./Washee
11-13-90
MB

Q.D.O.T. DISTRICT 2 SURVEY OFFICE

SHEET _____ OF _____

County Henry S.R. #18

Date 9 May 83

Township Barlow

Weather Clear

Section 24

Temp. 58°

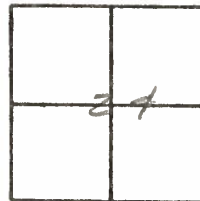
T.N, R.E

Personnel I. Stone

P. Neuser

D. Curtis

42-C

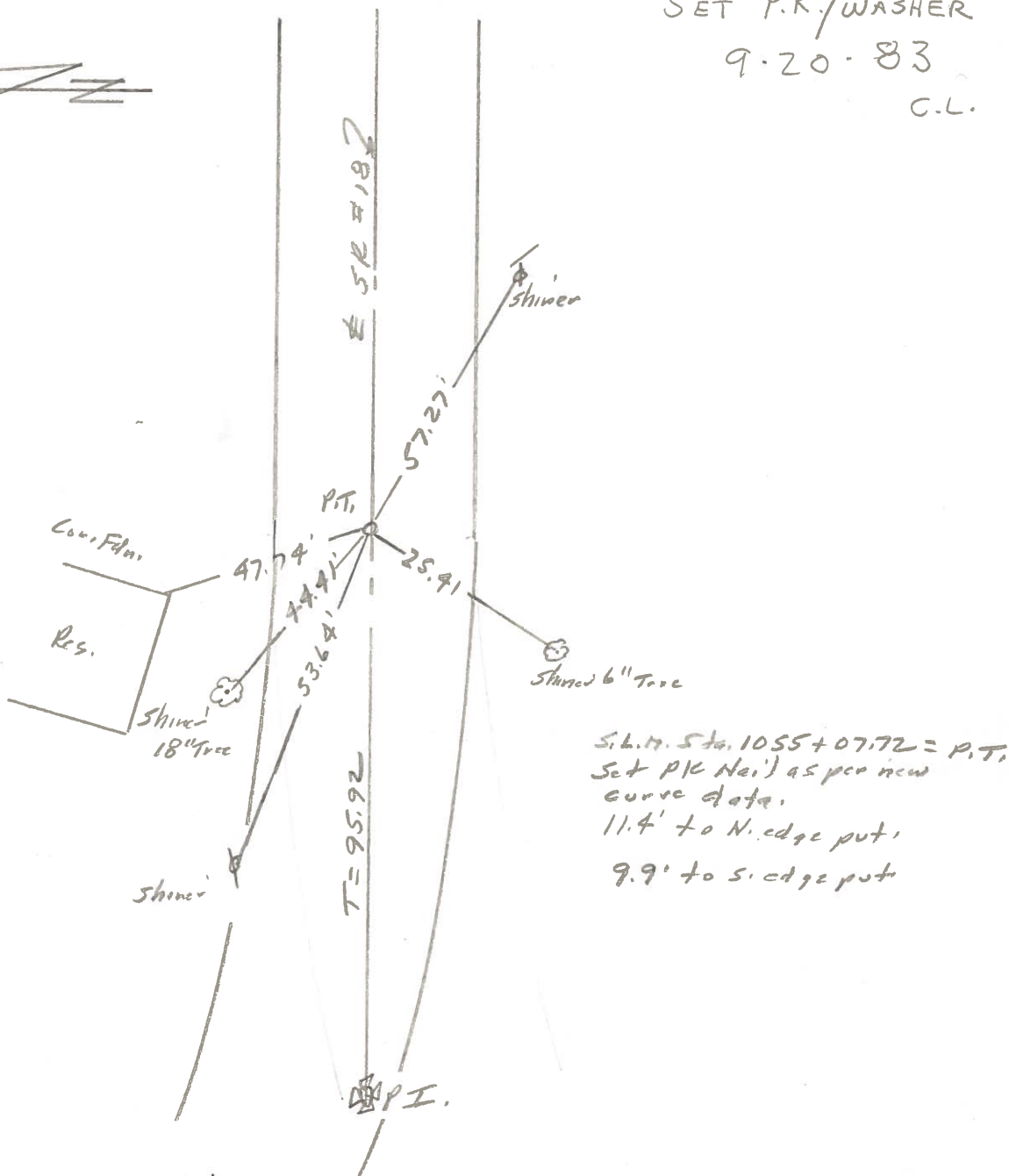


REF. NO.

SET P.K./WASHER

9-20-83

C.L.



S.L.M. Sta. 1055 + 07.72 = P.T.
 Set P.K. (Nail) as per new
 curve data.
 11.4' to N. edge put,
 9.9' to S. edge put