

MAINTENANCE PROGRAM 1981

PART 1
OF 2

(TOP) TYPE 404 THICKNESS 1 1/2" PRIORITY _____

(BASE) TYPE _____ THICKNESS _____ PENETRATION _____

END LOG S.L.M. 23.36 (Lucas Co Line ^{Calc. = 1233 + 40.80} Meas. = 1223 + 50 = Int. @ Co. Rd. #1)
BEGIN LOG S.L.M. 14.88 (END CONC. PAVEMENT ^{Calc. = 785 + 66.40} Meas. = 785 + 66.40)
TOTAL LENGTH 8.48

COUNTY	SECTION	WIDTH	BERM	CURBED
<u>HENRY</u>	_____	()	()	()
ROUTE <u>US 24</u>	SECTION _____	WIDTH ()	()	()
	SECTION _____	WIDTH ()	()	()
ORDINANCE _____	SECTION _____	WIDTH ()	()	()
END LOG _____	SECTION _____	WIDTH ()	()	()
BEGIN LOG _____	SECTION _____	WIDTH ()	()	()

EXISTING BERM TYPE Slab EXISTING BERM WIDTH 3' MAILBOX APPROACHES (1) 876+00 (2) 895+30 RT (3) 996+75 RT (4) 1036+00 RT (5) 1038+35 RT (6) 1180+00 RT
(PAVED, STABILIZED, AGGREGATE) MANHOLES None

PROPOSED BERM TYPE 404 PROPOSED BERM WIDTH 2" X INLETS CATCH BASINS 6

INTERSECTIONS 18 ASPHALT DRIVEWAYS 41 CONCRETE DRIVEWAYS None

STRUCTURES

STRUCTURE NO.	WIDTH	LENGTH	APPR. SLABS
<u>Hen. 27-2267</u>	<u>34.5</u>	<u>20'</u>	<u>None</u>

RAILROAD CROSSINGS

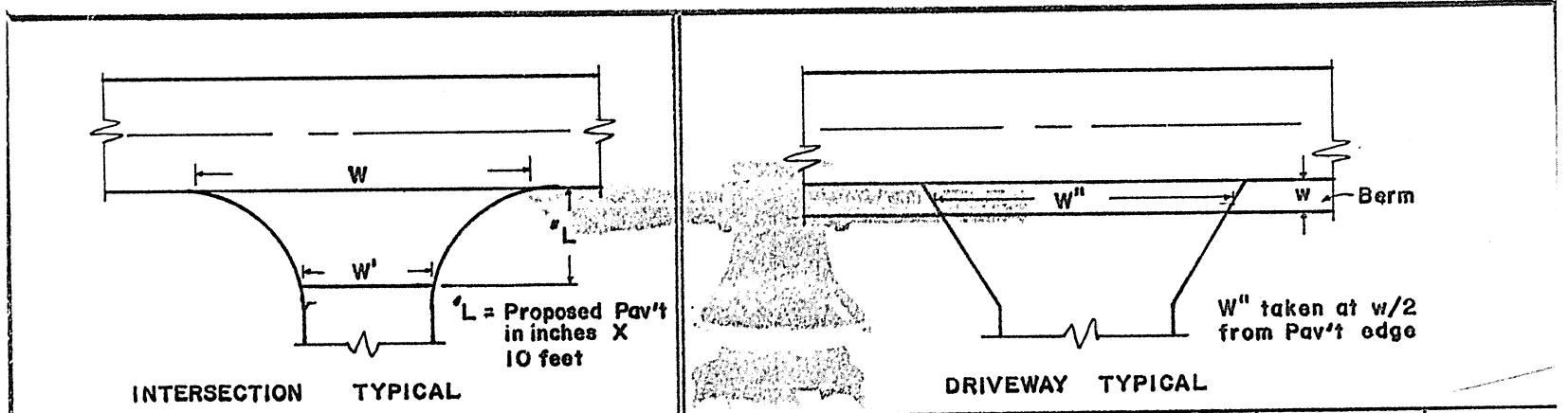
NAME R. R.	STATION	(*) ()	No. TRACKS
<u>None</u>		() ()	TRACKS
		() ()	TRACKS
		() ()	TRACKS
		() ()	TRACKS
		() ()	TRACKS

*Indicate length of crossing along ξ Pav't.

NOTES

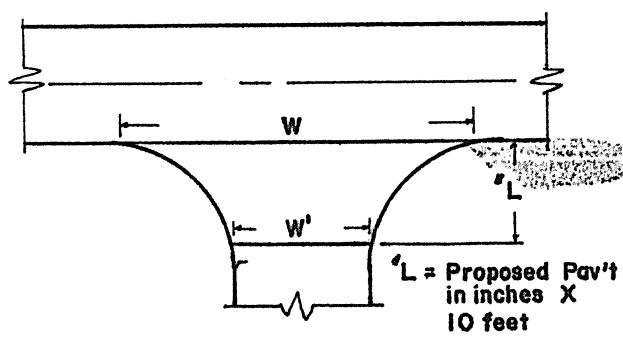
3' curb & gutter both sides begin' at 785+66.40 (24' asphalt put, plus 3' curb & gutter both sides = 30' put.) con. curb & gutter ends

PERSONNEL TITLE PERSONNEL TITLE COUNTY Henry DATE 18 Dec. 80
 S. R. 05 # 29 WEATHER Cool
 SEC. 17.88 - 23.36 TEMP. 33°
 DESCRIPTION Part #1 of 2 JOB NO. 026112

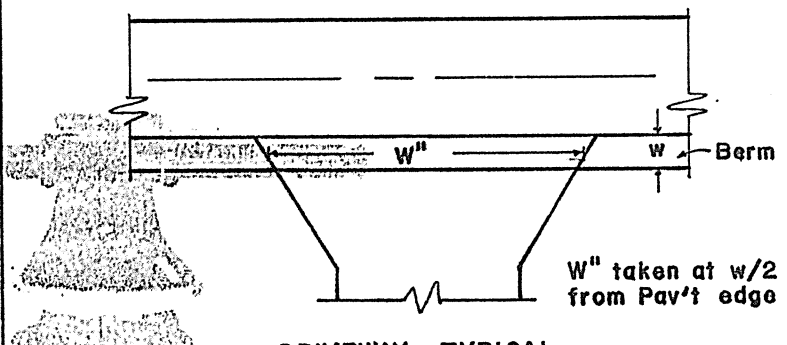


STATION	RT. LT.	L	W	W'	Asph	Conc		STATION	RT. LT.	w	W''	Asph	Conc	Aggr	Dropped Curb Feather NOT Req'd
810+74	Lt	15	95	42	✓		8-C	821+00	Lt	3'	44	✓			
837+69	Lt	15	78	43	✓		8	836+00	Lt	3	45	✓			
855+82	Lt	15	122	70	✓		109	861+75	Lt	3	50	✓			
869+23	Rt	15	130	72	✓		109	862+80	Lt	3	40	✓			
947+31	Lt	15	82	45	✓		6-C	865+05	Lt	3	39	✓			
1021+15	Lt	15	110	54	✓		4-A	876+15	Rt	3	39	✓			
1027+75	Lt	15	81	42	✓		Walnut	887+50	Lt	3	42	✓			
1030+99	Lt	15	71	41	✓		Dist. rd	896+15	Lt	3	46	✓			
1034+30	Lt	15	74	36	✓		Cherry	898+15	Rt	3	42	✓			
1037+75	Lt	15	76	44	✓		Broad	899+00	Rt	3	38	✓			
1045+50	Lt	15	100	62	✓		4	921+25	Rt	3	41	✓			
1053+75	Lt	15	175	100	✓		4	938+90	Rt	3	41	✓			
1069+75	Lt	15	46	22	✓		?	944+50	Lt	3	38	✓			
1078+00	Rt	15	49	20	✓		Cothran	946+25	Lt	3	26	✓			
1110+35	Lt	15	100	51	✓		3	977+25	Lt	3	42	✓			
1141+00	Lt	15	73	37	✓		2-B	990+25	Lt	3	41	✓			
1146+30	Lt	15	69	41	✓		2-B	995+40	Lt	3	43	✓			
1223+50	Lt	15	85	41	✓		1	997+10	Lt	3	56	✓			
								1023+70	Lt	3	40	✓			
								1025+75	Lt	3	34	✓			
								1029+50	Lt	3	55	✓			
								1033+10	Lt	3	40	✓			
								1036+05	Lt	3	37	✓			
								1038+25	Rt	3	35	✓			

PERSONNEL	TITLE	PERSONNEL	TITLE	COUNTY	Henry	DATE	18 Dec. 80
Stone				S. R.	US# 24	WEATHER	Cold
Conc				SEC.	14.88 - 23.36	TEMP.	33°
DESCRIPTION				Part # 1 of 2		JOB NO. 026112	
LEFT		CENTER LINE		RIGHT			



INTERSECTION TYPICAL

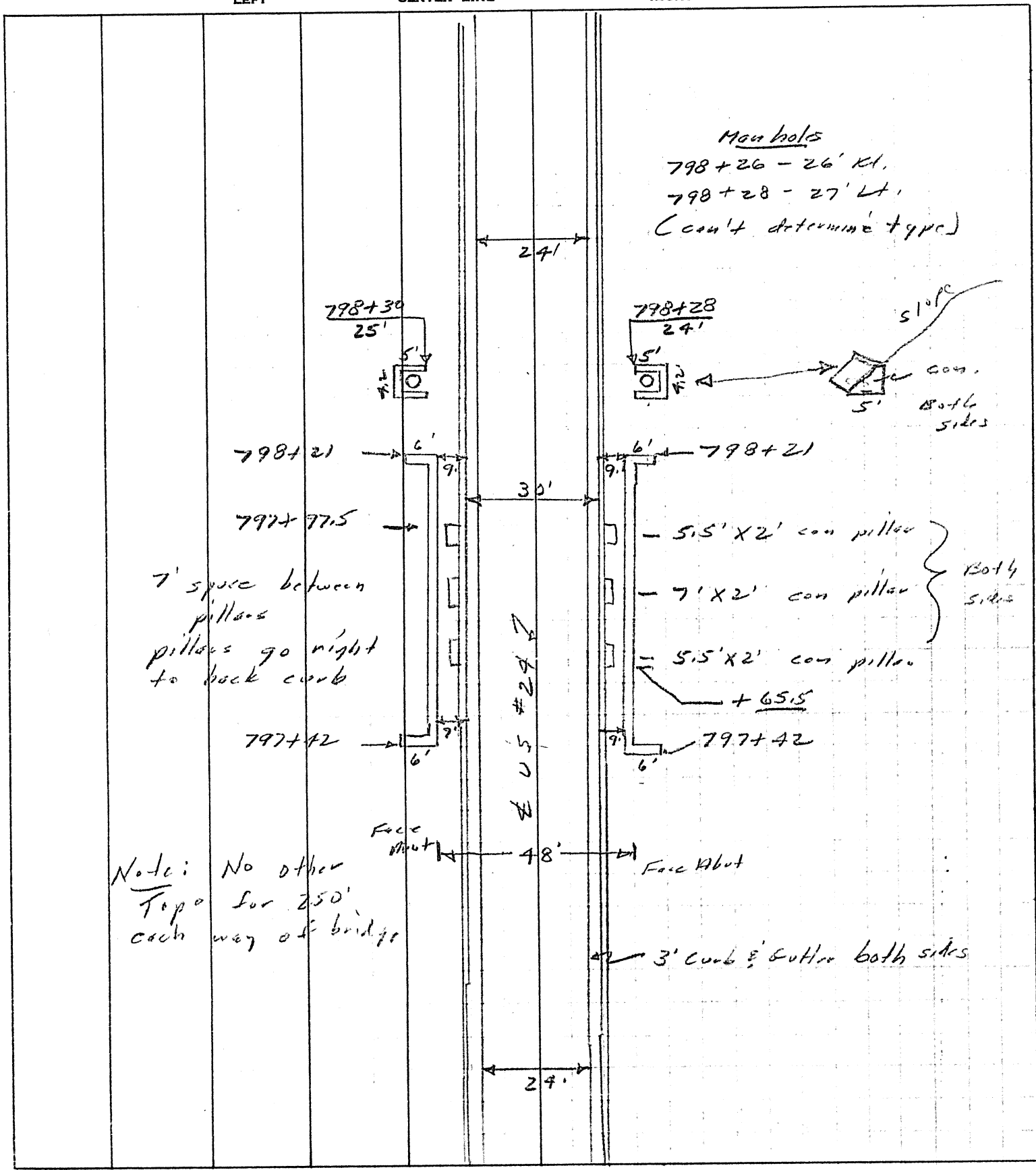


DRIVEWAY TYPICAL

STATION	RT. LT.	L	W	W'	Asph	Conc	STATION	RT. LT.	w	W''	Asph	Conc	Aggr	Dropped Curb Feather NOT Req'd
							1039+35	RT	3	44	✓			
							1044+90	RT	3	58	✓			
							1060+10	RT	3	42	✓			
							1070+50	RT	3	34	✓			
							1072+75	RT	3	39	✓			
							1075+65	RT	3	40	✓			
							1089+50	RT	3	39	✓			
							1096+70	LT	3	70	✓			
							1117+20	LT	3	49	✓			
							1168+25	LT	3	53	✓			
							1179+25	LT	3	44	✓			
							1180+00	LT	3	40	✓			
							1186+20	LT	3	40	✓			
							1192+00	RT	3	90	✓			Roadside Park
							1206+75	RT	3	62	✓			" "
							1209+25	RT	3	83	✓			" "
							1223+50	RT	3	64	✓			" "

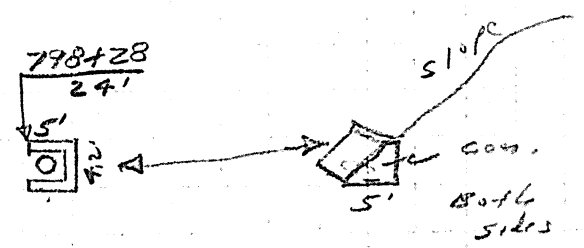
PERSONNEL	TITLE	PERSONNEL	TITLE	COUNTY	DATE
Stanc				Henry	17 Dec. 80
E				S. R. US # 24	WEATHER Cold
Crow				SEC. 17.88 - 23.36	TEMP. 20°

DESCRIPTION Topo & Other Data Br. No. Hen 24-1527 JOB NO. 026112



Note: No other Topo for 250' each way of bridge

Man holes
 798+26 - 26' Rt.
 798+28 - 27' Lt.
 (can't determine type)

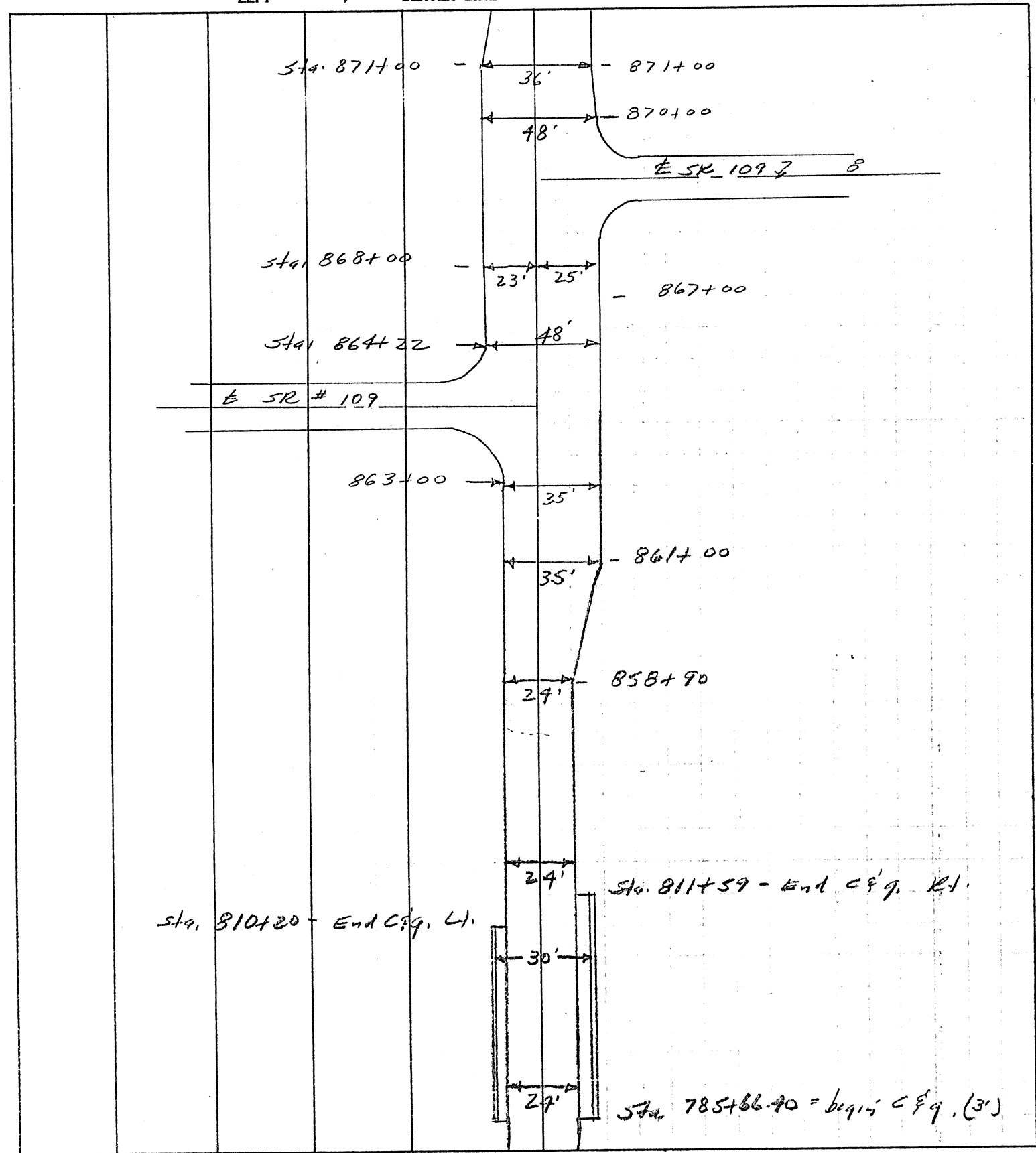


5.5' X 2' con pillar
 7' X 2' con pillar
 5.5' X 2' con pillar
 + 65.5
 Both sides

3' curb & gutter both sides

PERSONNEL	TITLE	PERSONNEL	TITLE	COUNTY	DATE
Slope				Henry	17 Dec. 80
				S. R. US #24	WEATHER Cold
				SEC. 14.88 - 23.36	TEMP. 20'

DESCRIPTION _____ put, widths _____ JOB NO. 026112



PERSONNEL	TITLE	PERSONNEL	TITLE	COUNTY	DATE
Stone				Henry	17 Dec. 80
F				S. R. US # 27	WEATHER Cold
Corr				SEC. 14.88 - 23.36	TEMP. 25°
DESCRIPTION				Pavement Widths	JOB NO. 026112
		LEFT	CENTER LINE	RIGHT	

