

# O.D.O.T. DISTRICT 2 SURVEY OFFICE

PERSONNEL \_\_\_\_\_

REFERENCE NO. 2

SHEET 1 OF 4

NOTES Barnhisel

H.C. Homan

R.C. Beaumont

DATE 9-13-02

WEATHER Sunny

TEMP. +65°

ROUTE U.S. 24

COUNTY Henry

TOWNSHIP Napoleon

SECTION 30

T. 5 N. R. 6 E

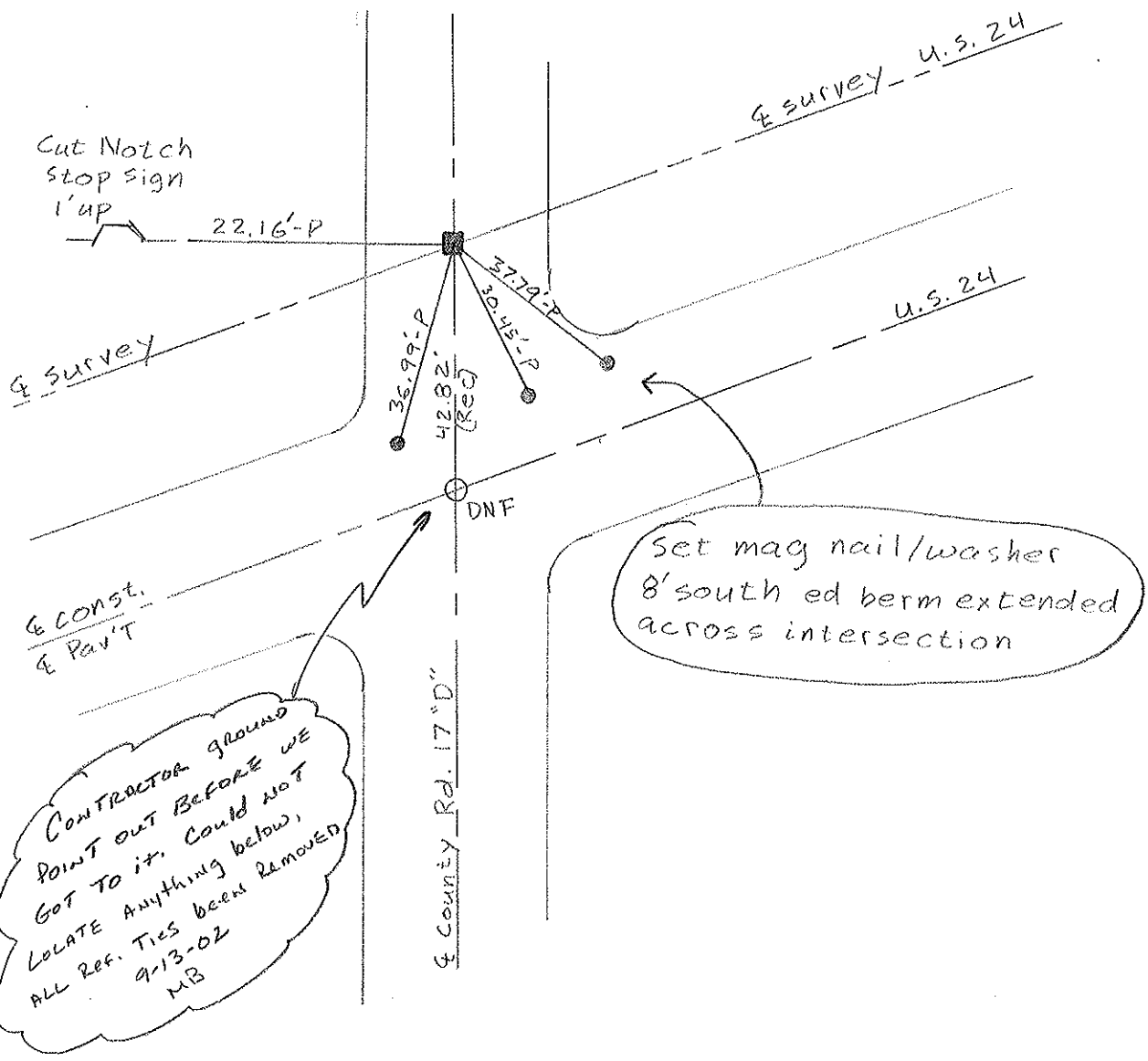
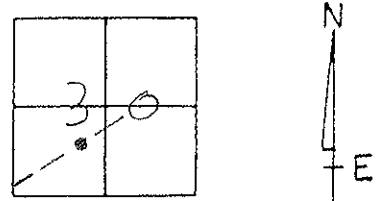
TYPE MONUMENT I. Pin in mon. box

ON SURFACE - ~~BELOW~~ on surface

LEFT - ☉ PAV'T. - ~~RIGHT~~ 42.8'

11.5' TO WEST EDGE PAVEMENT

S.L.M. 22+54



Resurveyed 2002

O.D.O.T. DISTRICT 2 SURVEY OFFICE

PERSONNEL

REFERENCE NO. 2

SHEET      OF     

NOTES VAN DUSEN

H.C. BURNETT

DATE 6-22-92

ROUTE US 24

R.C. BARNHISEL

WEATHER Cloudy

COUNTY HENRY

KUSZ A

TEMP. +65°F

TOWNSHIP NAPOLÉON

SECTION 30

T 5 N R 6 E

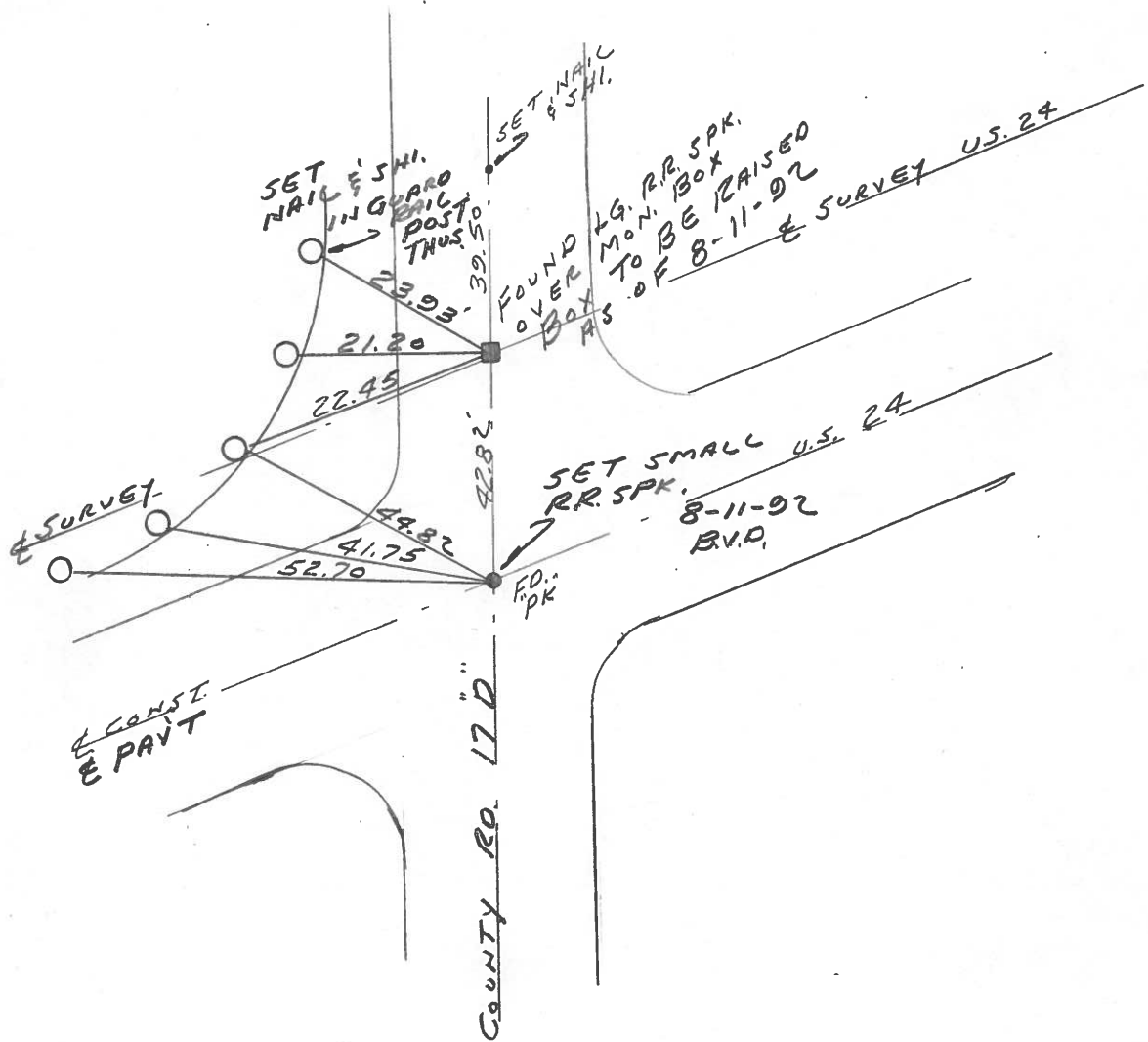
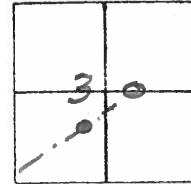
TYPE MONUMENT LARGE RR SPK. OVER  
MON. BOX

ON SURFACE - BELOW YES

LEFT- & PAV'T. - RIGHT YES

     TO      EDGE PAVEMENT

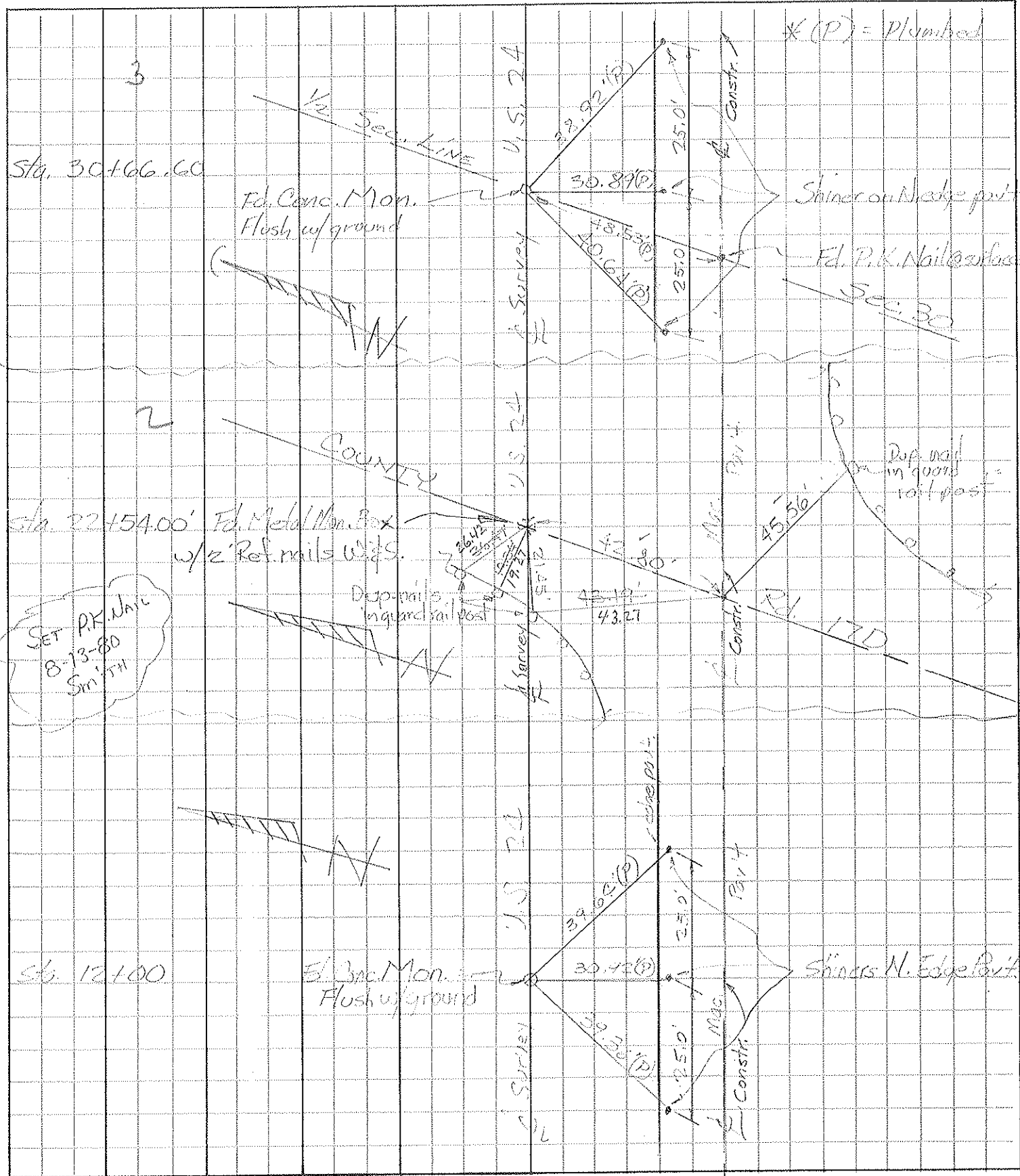
S.L.M. 22+54



PERSONNEL	TITLE	PERSONNEL	TITLE
Tomsik			
Neuser			
Granata			

COUNTY HEN DATE JULY 23, 1975  
 S. R. 24 WEATHER \_\_\_\_\_  
 SEC. \_\_\_\_\_ TEMP. \_\_\_\_\_

DESCRIPTION \_\_\_\_\_ LEFT \_\_\_\_\_ CENTER LINE \_\_\_\_\_ RIGHT \_\_\_\_\_ JOB NO. \_\_\_\_\_



PERSONNEL TITLE PERSONNEL TITLE

Loays  
 Fessenden  
 Rutter  
 Wise

COUNTY He.

DATE 12-14-54

S. R. 24

WEATHER Cloudy

SEC. Sta 0+00 = (Co. Line)

TEMP. 32°

DESCRIPTION

Witnesses to Central Points (PI) to of survey

Note -

LEFT

CENTER LINE

RIGHT

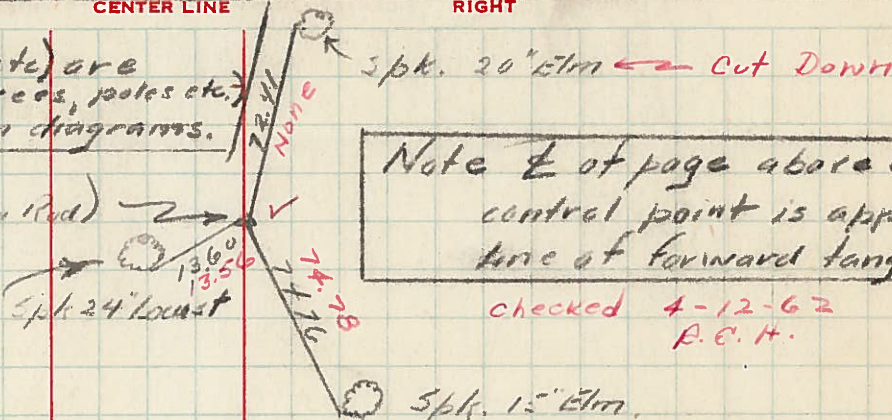
JOB NO.

First (Spk shiners, etc) are placed in witnesses (trees, posts etc) on sides as shown in diagrams.

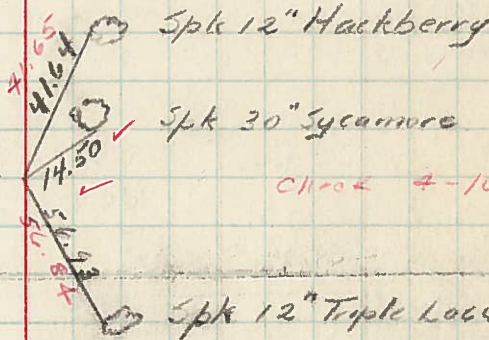
Note of page above each central point is approx line of forward tangent

checked 4-12-62  
 A.E.H.

PI Sta 11+07.39 (1/2" Iron Rod)  
 $\Delta = 20^{\circ} 20' \text{ LT}$   
 $D = 2^{\circ} 45'$   
 $T = 373.64$

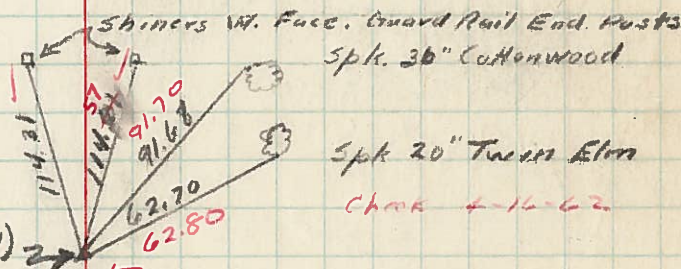


PI Sta 17+57.24 (1/2" Iron Rod)  
 $\Delta = 13^{\circ} 25' \text{ LT}$   
 $D = 3^{\circ} 00'$   
 $T = 224.64$



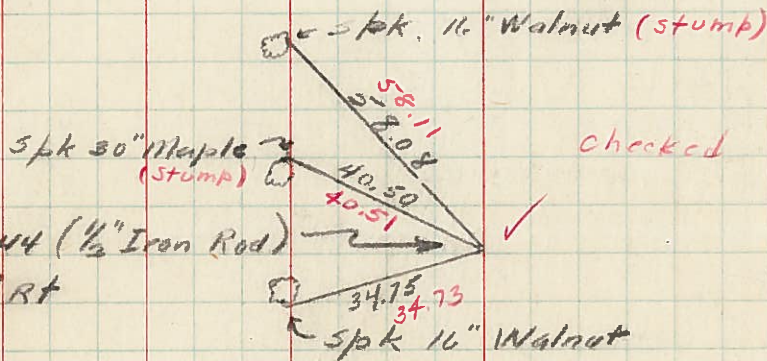
checked 4-16-62

PI Sta 24+87.55 (Lag screw in Pavil)  
 $\Delta = 2^{\circ} 35' \text{ RT}$   
 $D = 1^{\circ} 00'$   
 $T = 129.19$



checked 4-16-62

PI Sta 29+844 (1/2" Iron Rod)  
 $\Delta = 21^{\circ} 48' \text{ RT}$   
 $D = 6^{\circ} 30'$   
 $T_s = 270.07$   
 $\Delta_c = 8^{\circ} 48'$   
 $L_s = 300'$



checked 4-16-62