

O.D.O.T. DISTRICT 2 SURVEY OFFICE

PERSONNEL

REFERENCE NO. 5

SHEET 2 OF 4

NOTES Barnhisel

H.C. Canterbury

R.C. Barnhisel

DATE 9-11-02

WEATHER Sunny

TEMP. +65°

ROUTE U.S. 24

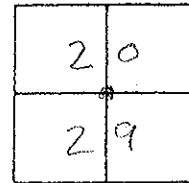
COUNTY Henry

TOWNSHIP Napolean

SECTION 20, 29

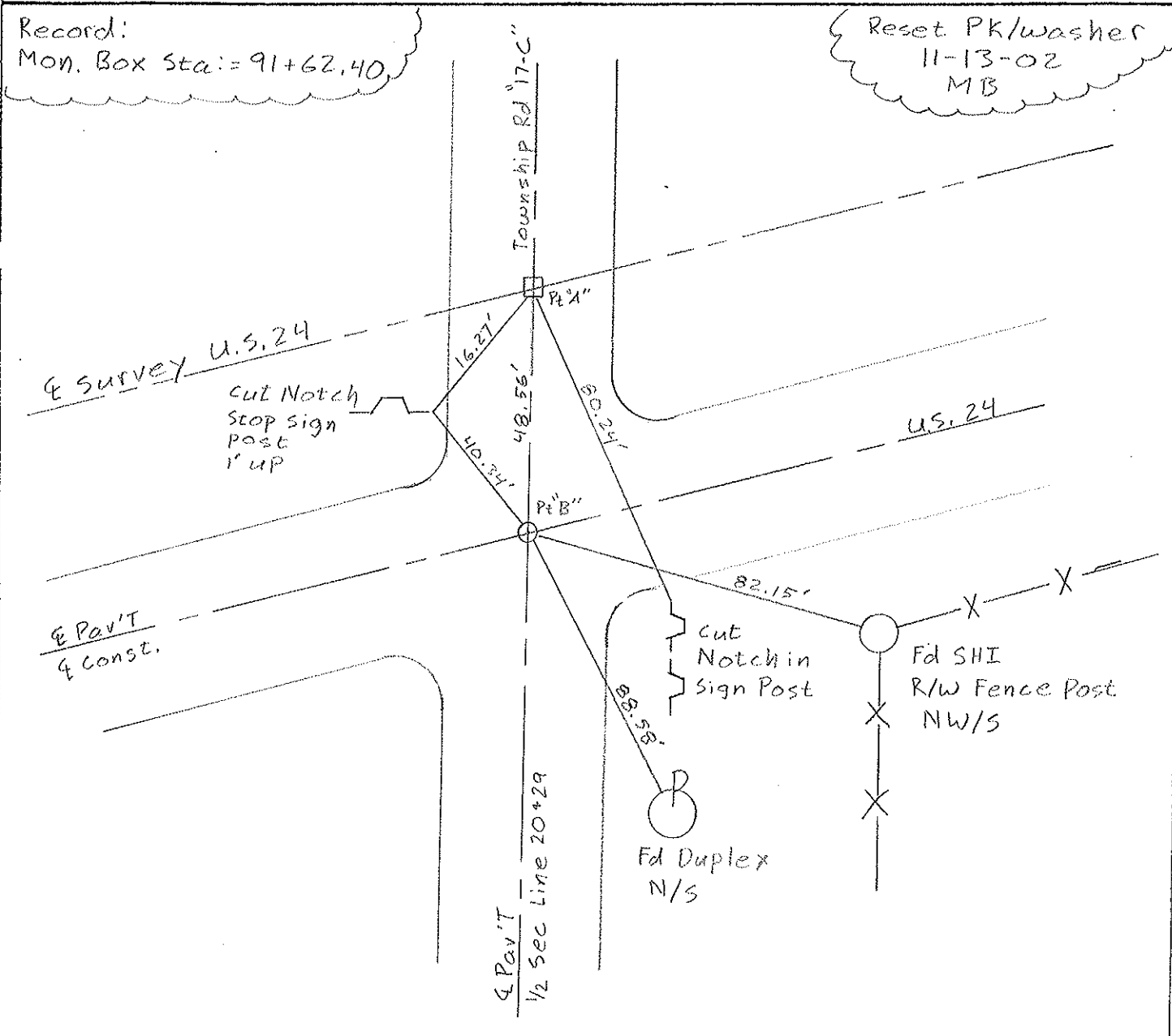
T 5 N R 6 E

TYPE MONUMENT ^{"A"} mon box ^{"B"} 5" RR SPK
 ON SURFACE - BELOW ^{"A"} on surface ^{"B"} 3" below
 LEFT - Q Pav'T. - RIGHT both Q Pav'T
 TO RT EDGE PAVEMENT ^{"A"} 8.0' ^{"B"} 12.1'
 S.L.M. mon box 91+29



Record:
 Mon. Box Sta: = 91+62.40

Reset PK/washer
 11-13-02
 MB



PERSONNEL	TITLE	PERSONNEL	TITLE
Tomsic			
Granata			
Knafe			

COUNTY HEN DATE DEC. 2, 1975
 U.S. 24 WEATHER Clear
 S. R. 24
 SEC. NAPOLEON TWP. TEMP. -35

DESCRIPTION REF. MON. U.S. 24 Defiance Co. Line E. JOB NO. _____
 LEFT CENTER LINE RIGHT

