

O.D.O.T. DISTRICT 2 SURVEY OFFICE (USE ONLY)

PERSONNEL _____

REFERENCE NO. 5

SHEET 10 OF 29

NOTES LEU

DATE 8/15/19

ROUTE US 24

H.C. _____

WEATHER _____

COUNTY HENRY

R.C. _____

TEMP. _____

TOWNSHIP NAPOLEON

DWG BY NIESE

PID 95716

SECTION 29

T 5 N R 6 E

TYPE MONUMENT CMON

ON SURFACE - ~~BELOW~~ ON

OFFSET \varnothing PAVEMENT ON ~~LT~~ : ~~RT~~

- TO - EDGE PAVEMENT

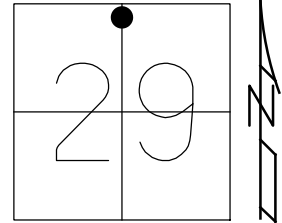
STATION: 91+61.59

HORZ.DATUM: NAD83(2011)

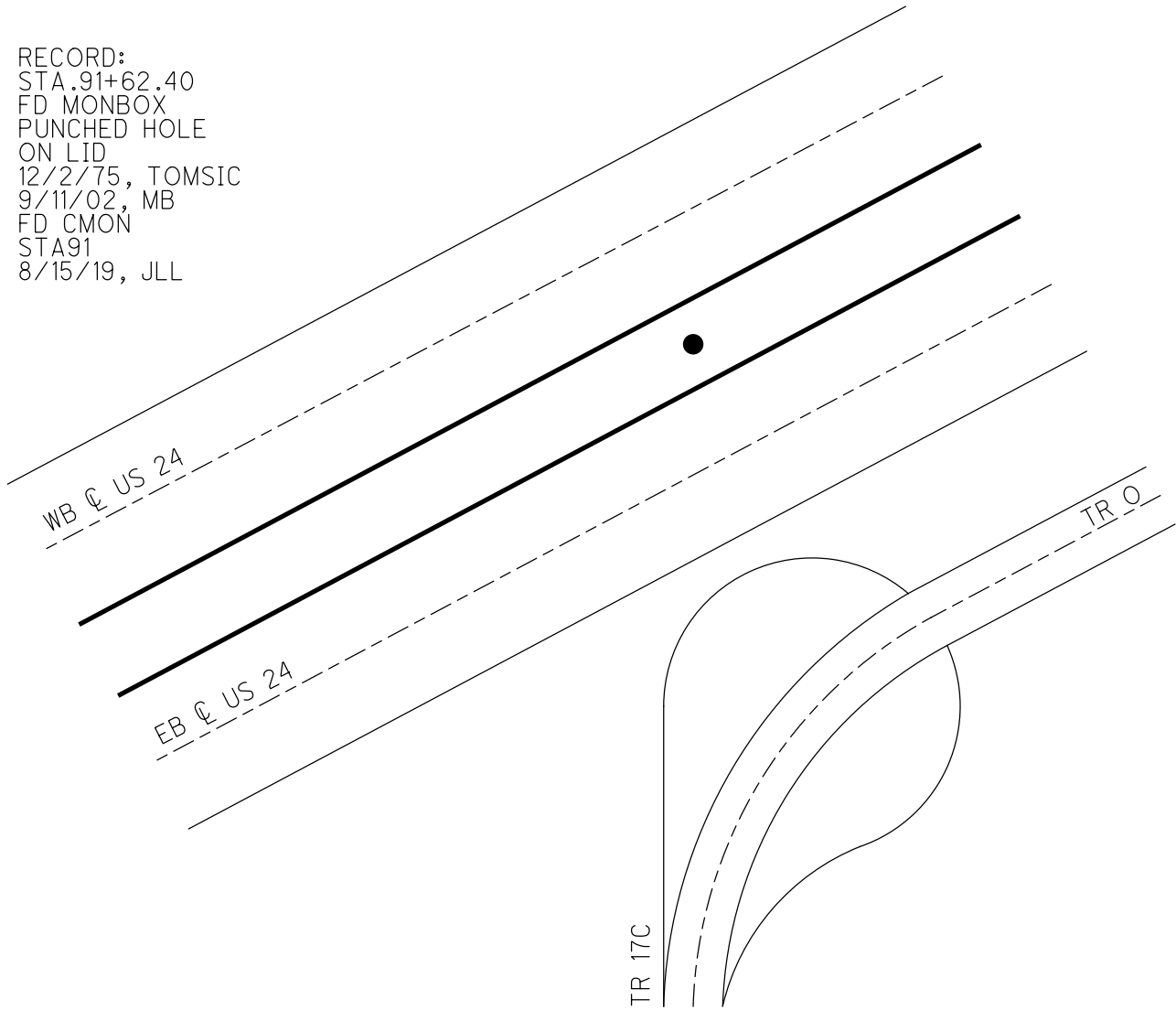
GEOID: 2012A

GRID: NORTHING: 624839.452

EASTING: 1502261.562



RECORD:
STA.91+62.40
FD MONBOX
PUNCHED HOLE
ON LID
12/2/75, TOMSIC
9/11/02, MB
FD CMON
STA91
8/15/19, JLL



O.D.O.T. DISTRICT 2 SURVEY OFFICE

PERSONNEL _____

REFERENCE NO. 5

SHEET 2 OF 4

NOTES Barnhisel

H.C. Canterbury

R.C. Barnhisel

DATE 9-11-02

WEATHER Sunny

TEMP. +65°

ROUTE U.S. 24

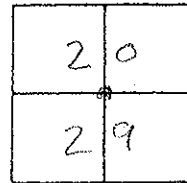
COUNTY Henry

TOWNSHIP Napolean

SECTION 20, 29

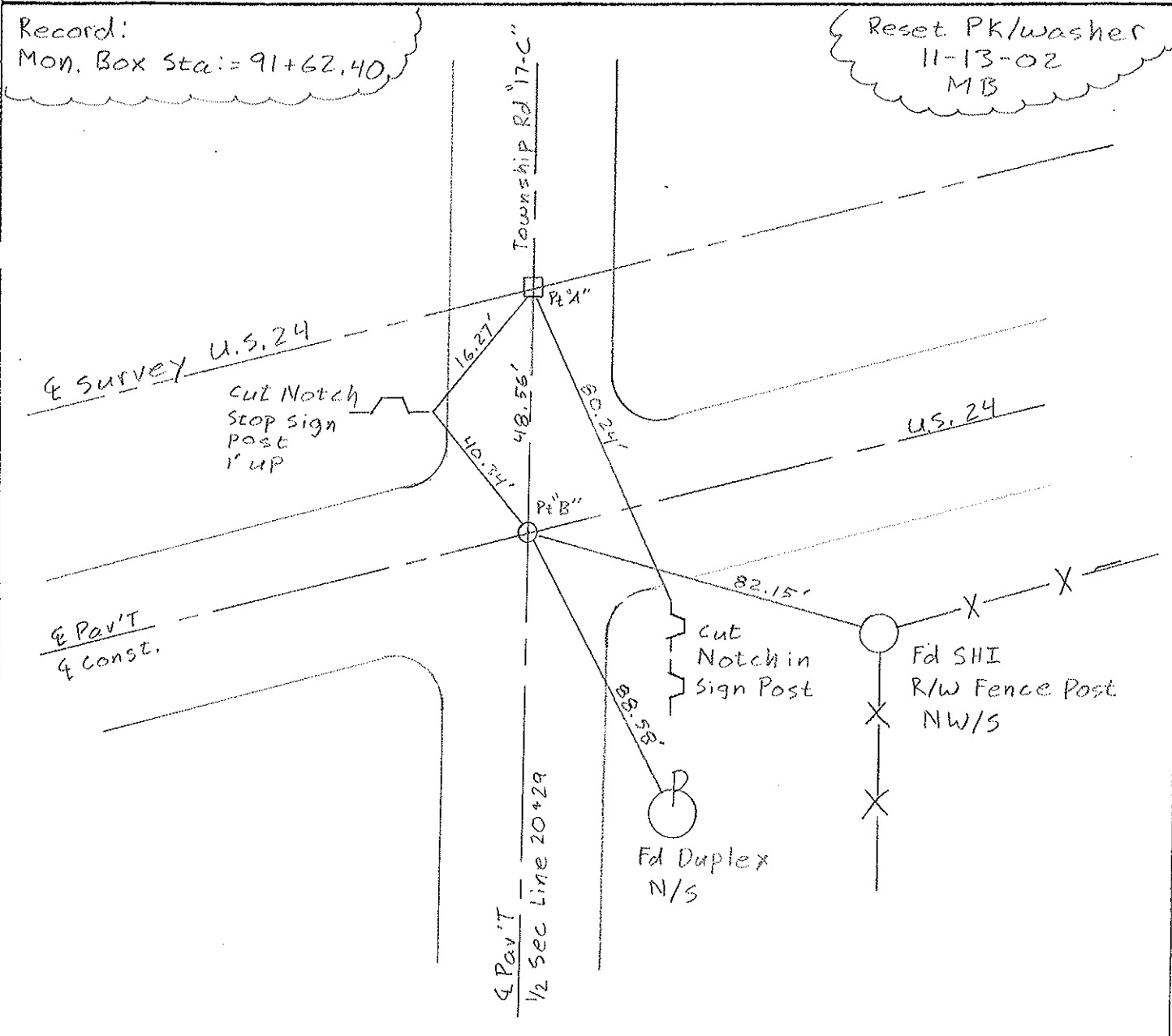
T 5 N R 6 E

TYPE MONUMENT ^{"A"} mon box ^{"B"} 5" RR SPK
 ON SURFACE - BELOW on surface 3" below
 LEFT - Q Pav'T. - RIGHT both Q Pav'T
 TO RT EDGE PAVEMENT ^{"A"} 8.0' ^{"B"} 12.1'
 S.L.M. mon box 91+29



Record:
 Mon. Box Sta: = 91+62.40

Reset PK/washer
 11-13-02
 MB



O.D.O.T. DISTRICT 2 SURVEY OFFICE

PERSONNEL

REFERENCE NO. 5

SHEET OF

NOTES BARNHISEL

H.C. VAN DUSEN

DATE 6-22-92

ROUTE U.S. 24

R.C. BURNETT

WEATHER cloudy

COUNTY HENRY

KUSZ

TEMP. +65°

TOWNSHIP NAPOLEON

SECTION 20 & 29

T. 5 N. R. 6 E.

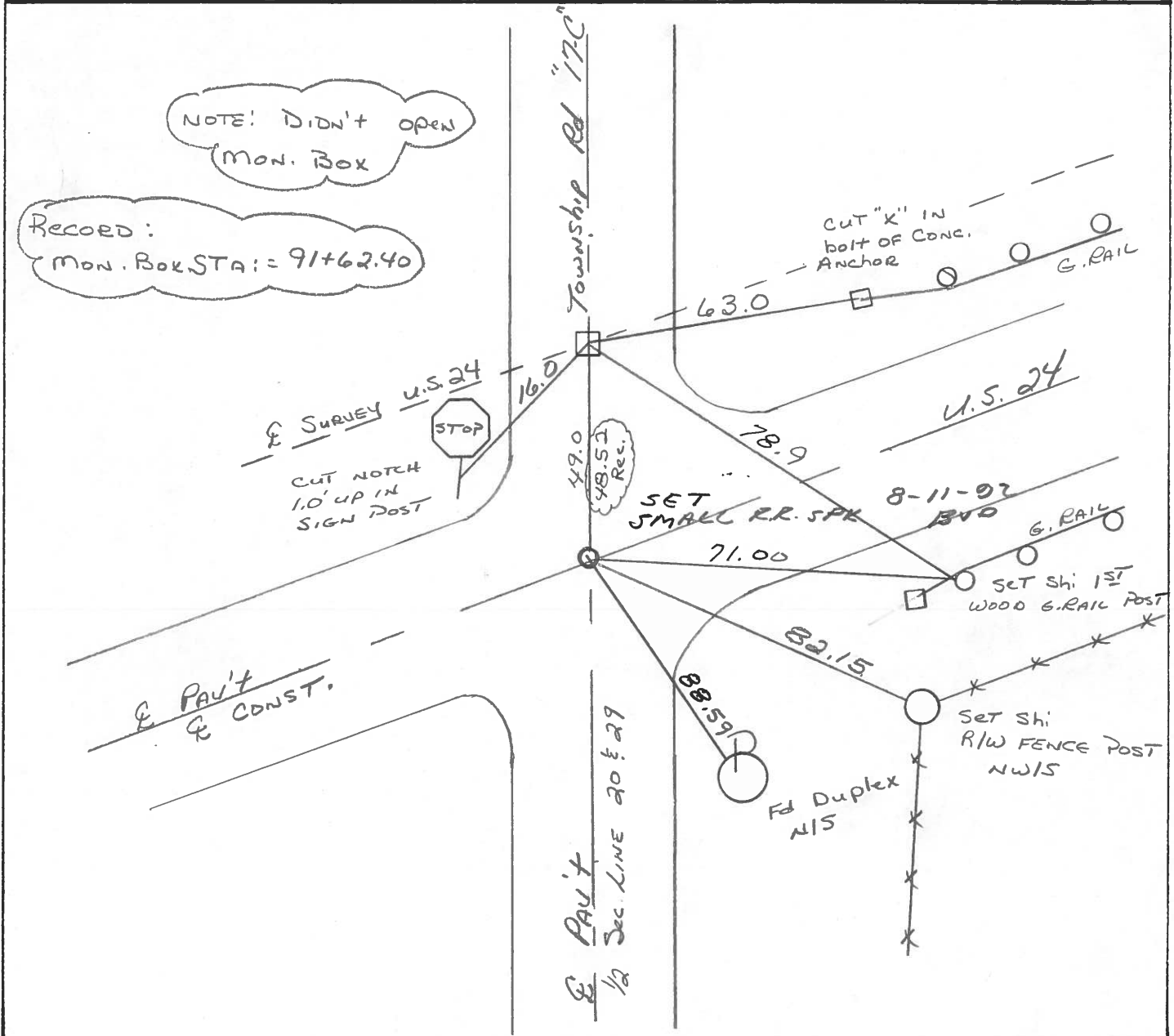
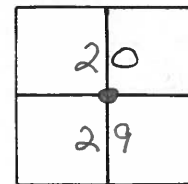
TYPE MONUMENT Mon. Box & P.K. NAIL

ON SURFACE - BELOW yes yes

~~LEFT - & PAV'T. - RIGHT~~ yes yes

8.0
12.1 TO RT EDGE PAVEMENT

S.L.M. Mon. Box 91+29



PERSONNEL	TITLE	PERSONNEL	TITLE
Tomsic			
Granata			
Rnabe			

COUNTY HEN DATE DEC. 2, 1975
 U.S. 24 WEATHER Clear
 S. R. 24
 SEC. NAPOLEON TWP. TEMP. -35

DESCRIPTION REF. MON. U.S. 24 Defiance Co. Line E. JOB NO. _____
 LEFT CENTER LINE RIGHT

