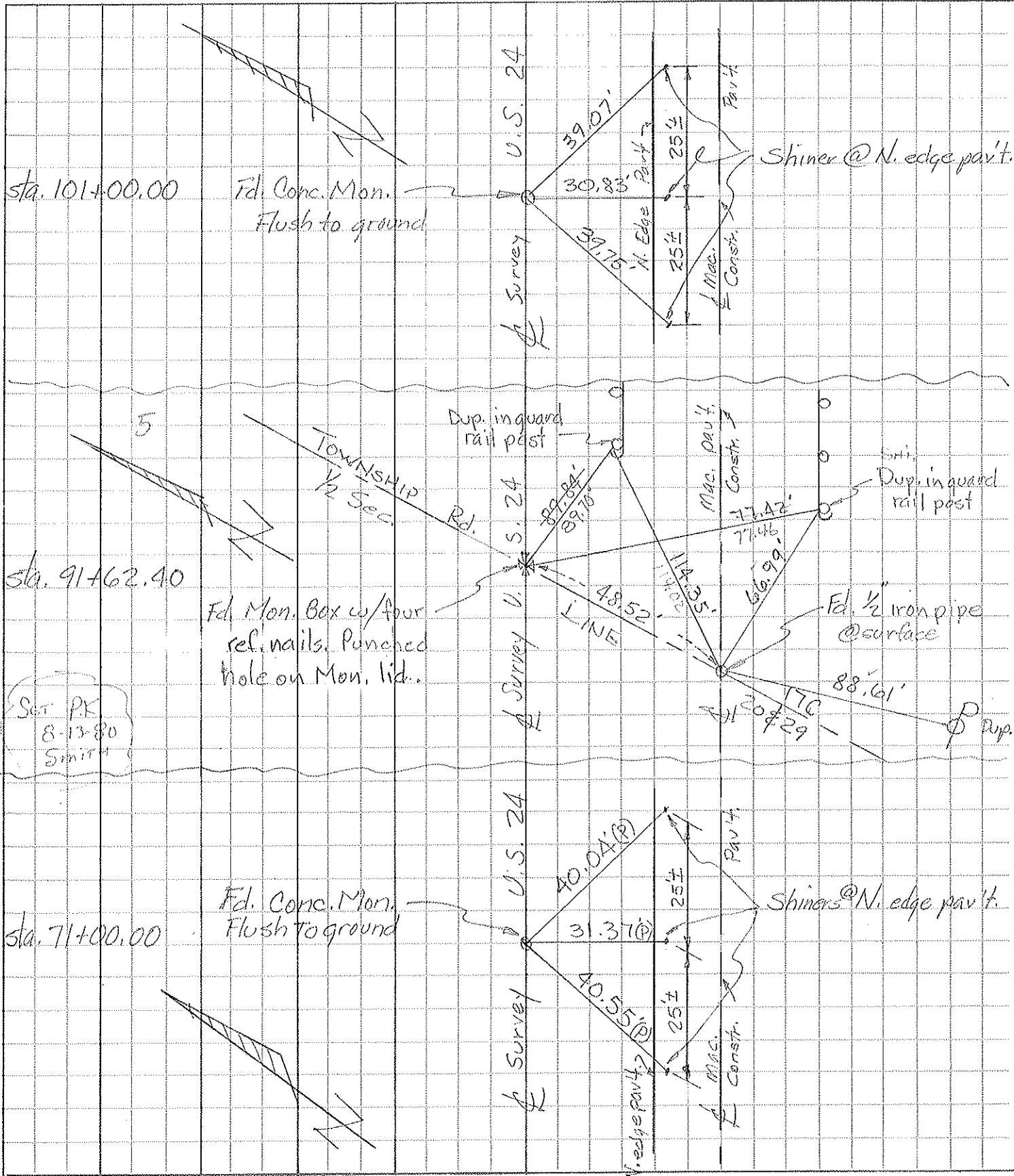


PERSONNEL	TITLE	PERSONNEL	TITLE
Tomsic			
Granata			
Rnabe			

COUNTY HEN DATE DEC. 2, 1975  
 U.S. 24 WEATHER Clear  
 S. R. 24  
 SEC. NAPOLEON TWP. TEMP. -35

DESCRIPTION REF. MON. U.S. 24 Defiance Co. Line E. JOB NO. \_\_\_\_\_



# O.D.O.T. DISTRICT 2 SURVEY OFFICE

PERSONNEL \_\_\_\_\_

REFERENCE NO. 5

SHEET 2 OF 4

NOTES Barnhisel

H.C. Canterbury

R.C. Barnhisel

DATE 9-11-02

WEATHER Sunny

TEMP. +65°

ROUTE U.S. 24

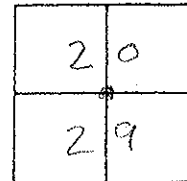
COUNTY Henry

TOWNSHIP Napolean

SECTION 20, 29

T 5 N R 6 E

TYPE MONUMENT <sup>"A"</sup> mon box <sup>"B"</sup> 5" RR SPK  
 ON SURFACE - BELOW on surface 3" below  
 LEFT - Q Pav'T. - RIGHT both Q Pav'T  
 TO RT EDGE PAVEMENT <sup>"A"</sup> 8.0' <sup>"B"</sup> 12.1'  
 S.L.M. mon box 91+29



Record:  
 Mon. Box Sta: = 91+62.40

Reset PK/washer  
 11-13-02  
 MB

