

O.D.O.T. DISTRICT 2 SURVEY OFFICE (USE ONLY)

PERSONNEL \_\_\_\_\_

REFERENCE NO. 12 A

SHEET 32 OF 33

NOTES TOMSIC DATE 12/10/75

ROUTE US 24

H.C. NEUSER WEATHER CLEAR

COUNTY HENRY

R.C. GRANATA TEMP. 38°

TOWNSHIP NAPOLEON

SECTION 14

DWG BY NIESE PID \_\_\_\_\_

T 5 N R 6 E

TYPE MONUMENT CMON

ON SURFACE - ~~BELOW~~ ON

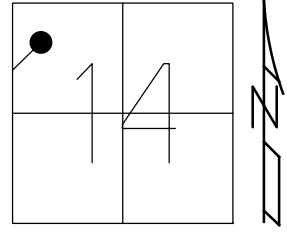
OFFSET Q PAVEMENT ON LT : RT

- TO - EDGE PAVEMENT

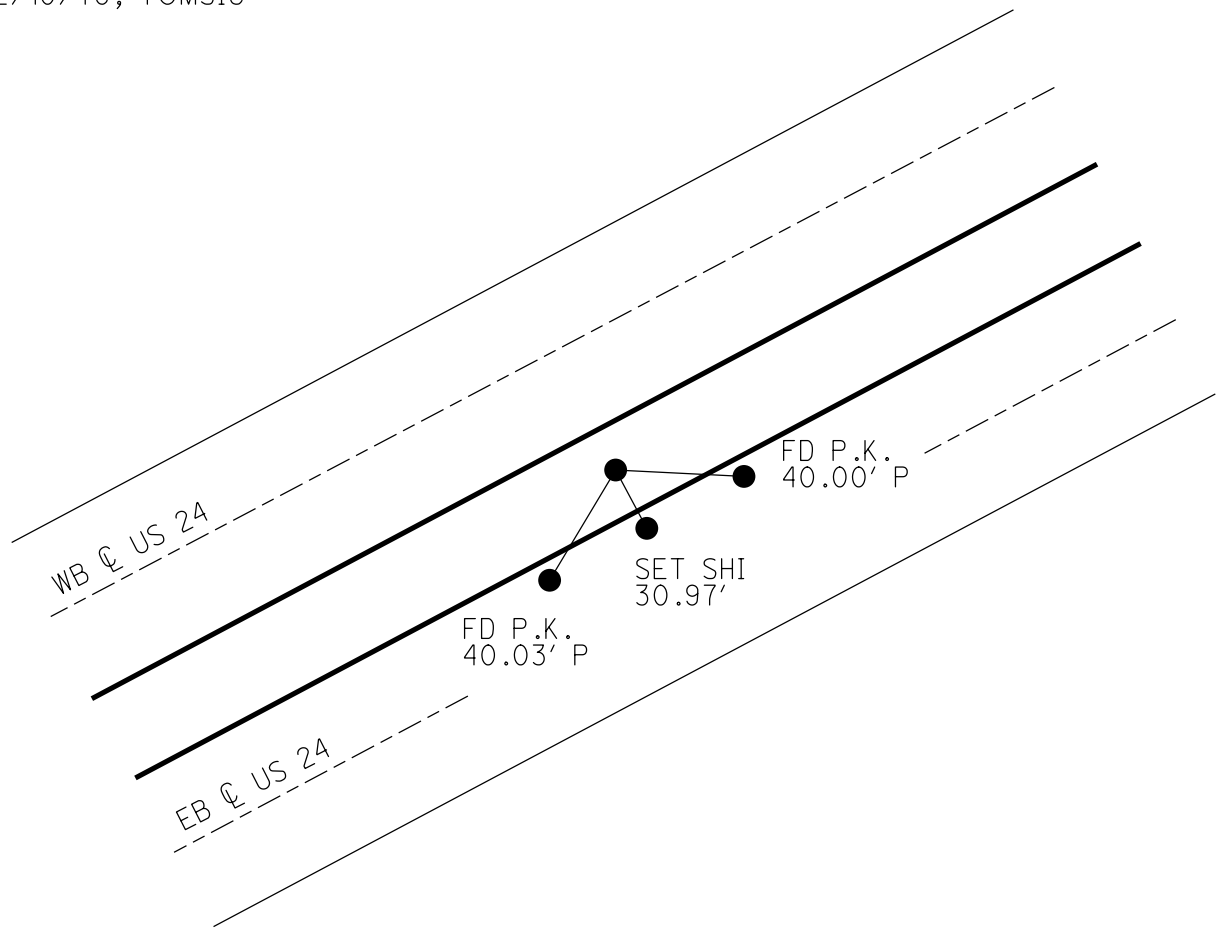
STATION: 262+00

HORIZ.DATUM: \_\_\_\_\_ GEOID: \_\_\_\_\_

GRID: NORTHING: \_\_\_\_\_ EASTING: \_\_\_\_\_



RECORD:  
FD CMON  
12/10/75, TOMSIC



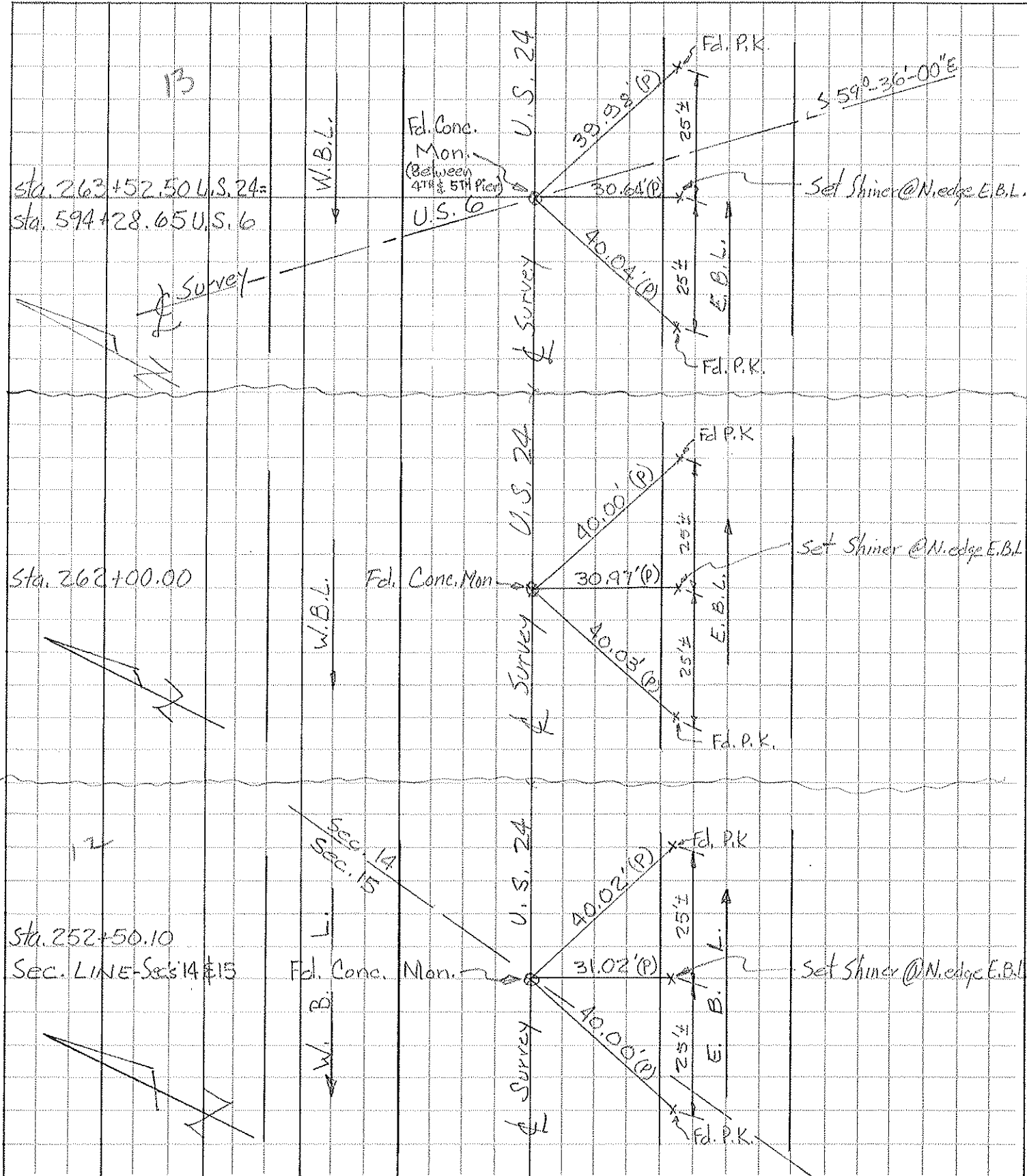
PERSONNEL	TITLE	PERSONNEL	TITLE
Tomsic			
Neuser			
Granata			

COUNTY HEN. DATE Dec. 10, 1975

S. R. U.S. 24 WEATHER P. Cloudy

SEC. \_\_\_\_\_ TEMP. 38°

DESCRIPTION \_\_\_\_\_ LEFT \_\_\_\_\_ CENTER LINE \_\_\_\_\_ RIGHT \_\_\_\_\_ JOB NO. \_\_\_\_\_



sta. 263+52.50 U.S. 24=  
sta. 594+28.65 U.S. 6

Sta. 262+00.00

Sta. 252+50.10  
SEC. LINE - Sec's 14 & 15

Fcd. Conc. Mon.  
(Between  
4TH & 5TH Pcs)  
U.S. 6

Fcd. Conc. Mon.

Fcd. Conc. Mon.

Set Shiner @ N. edge E.B.L.

Set Shiner @ N. edge E.B.L.

Set Shiner @ N. edge E.B.L.

Sec. 14  
Sec. 15