

O.D.O.T. DISTRICT 2 SURVEY OFFICE (USE ONLY)

PERSONNEL

REFERENCE NO. 13A

SHEET 1 OF 47

NOTES SIMON

DATE 4/23/93

ROUTE US 24

H.C. LOEHRKE

WEATHER SUNNY

COUNTY HENRY

R.C. CORDES

TEMP. 65°

TOWNSHIP LIBERTY

SECTION 2

DWG BY NIESE PID \_\_\_\_\_

T 5 N R 7 E

TYPE MONUMENT SM.R.R.SPIKE

ON SURFACE - ~~BELOW~~ ON

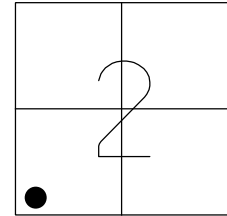
OFFSET CL PAVEMENT ON LT : RT

12.0' TO LT EDGE PAVEMENT

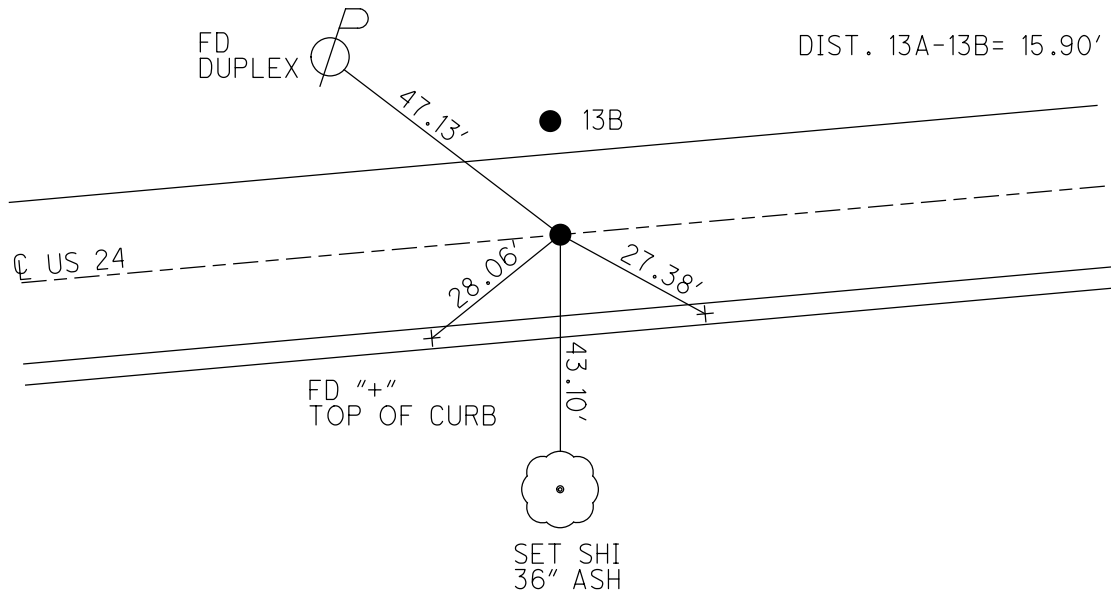
STATION: 589+75

HORZ.DATUM: \_\_\_\_\_ GEOID: \_\_\_\_\_

GRID: NORTHING: \_\_\_\_\_ EASTING: \_\_\_\_\_



RECORD: P.I.  
 STA 796+54.97  
 FD SM.R.R.SPIKE  
 4/23/93, CL  
 SET P.K./WASHER  
 7/13/93, MB



# O.D.O.T. DISTRICT 2 SURVEY OFFICE

PERSONNEL

REFERENCE NO. 13A

SHEET 1 OF 40

NOTES Simon

H.C. Loehrke

R.C. CordeS

DATE 4-23-93

WEATHER Sunny

TEMP. +65

ROUTE U.S. 24

COUNTY Henry

TOWNSHIP Liberty

SECTION 2

T 5 N R 7 E

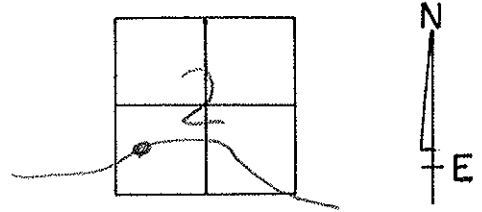
TYPE MONUMENT Small R-R spike

ON SURFACE - ~~BELOW~~ yes

~~LEFT - & PAV'T. - RIGHT~~ yes

D.O TO Left EDGE PAVEMENT

S.L.M. 589475 11.17

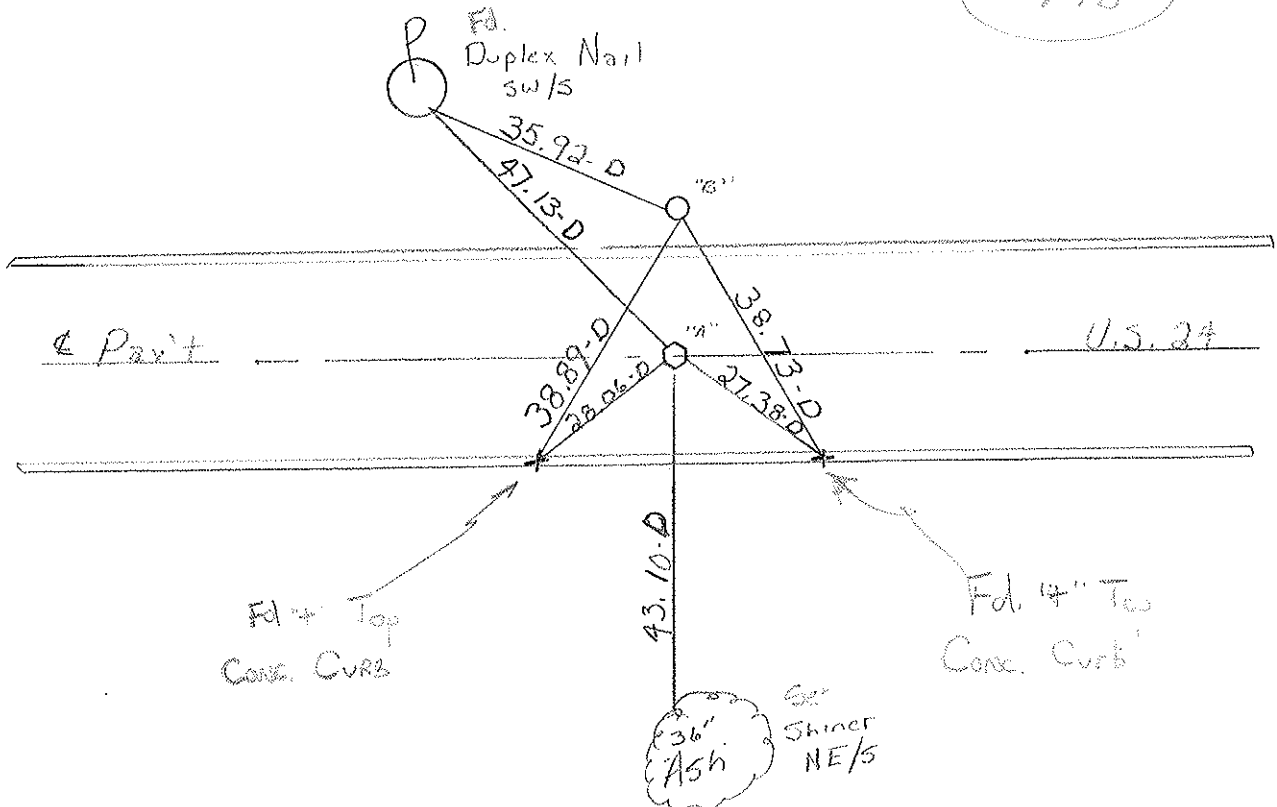


Pt A Small R.R. Spike

Distance Between A+B 15.90-D

Pt B 1" iron rod 1" below surface

RESET PK4 WASHER  
 7-13-93  
 YTB



P.I. Sta. 796+54.97 Rec.

Resurfaced 1993

O.D.O.T. DISTRICT 2 SURVEY OFFICE

SHEET 1 OF

County HENRY S.R.-US 24

Date 6-1-81

Township LIBERTY

Weather Clear

Section 2

Temp. +80°

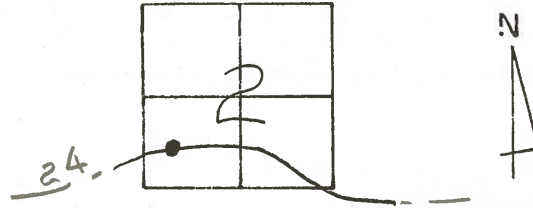
T5N, R7E

Personnel HOFFMAN

LOFFRKE

House holder

13A



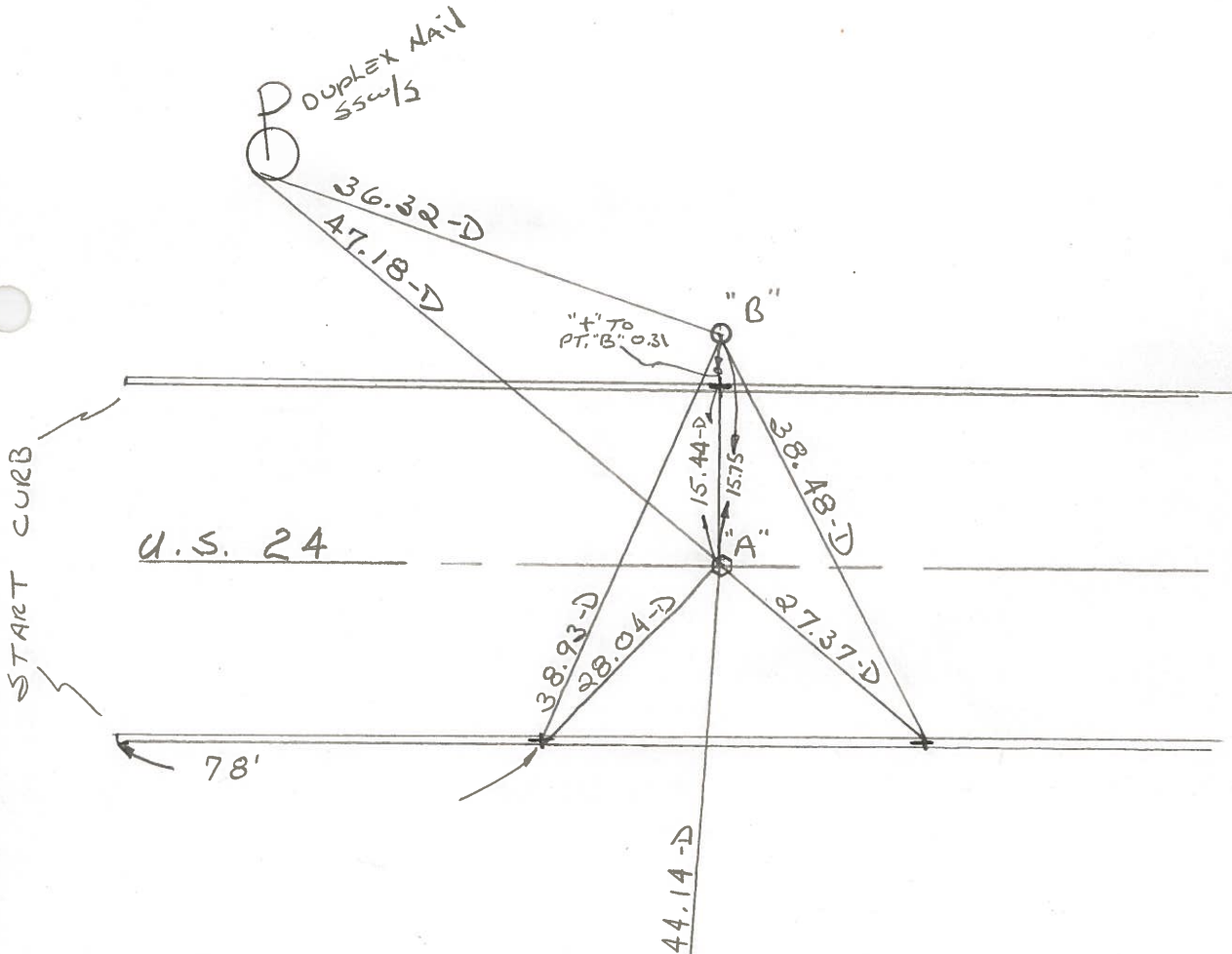
PT. "A" Fd. BOAT SPK. @ SURFACE

PROJECT STA. ± 786+68

PT. "B" Fd. 1" IRON PIPE @ SURFACE

SET SMALL R.R. SPK. 9-2-81

SWT



BERKEN

- SAND PIT & BLACKTOP PLANT.

ALSO:  
59.81-D TO PT. B

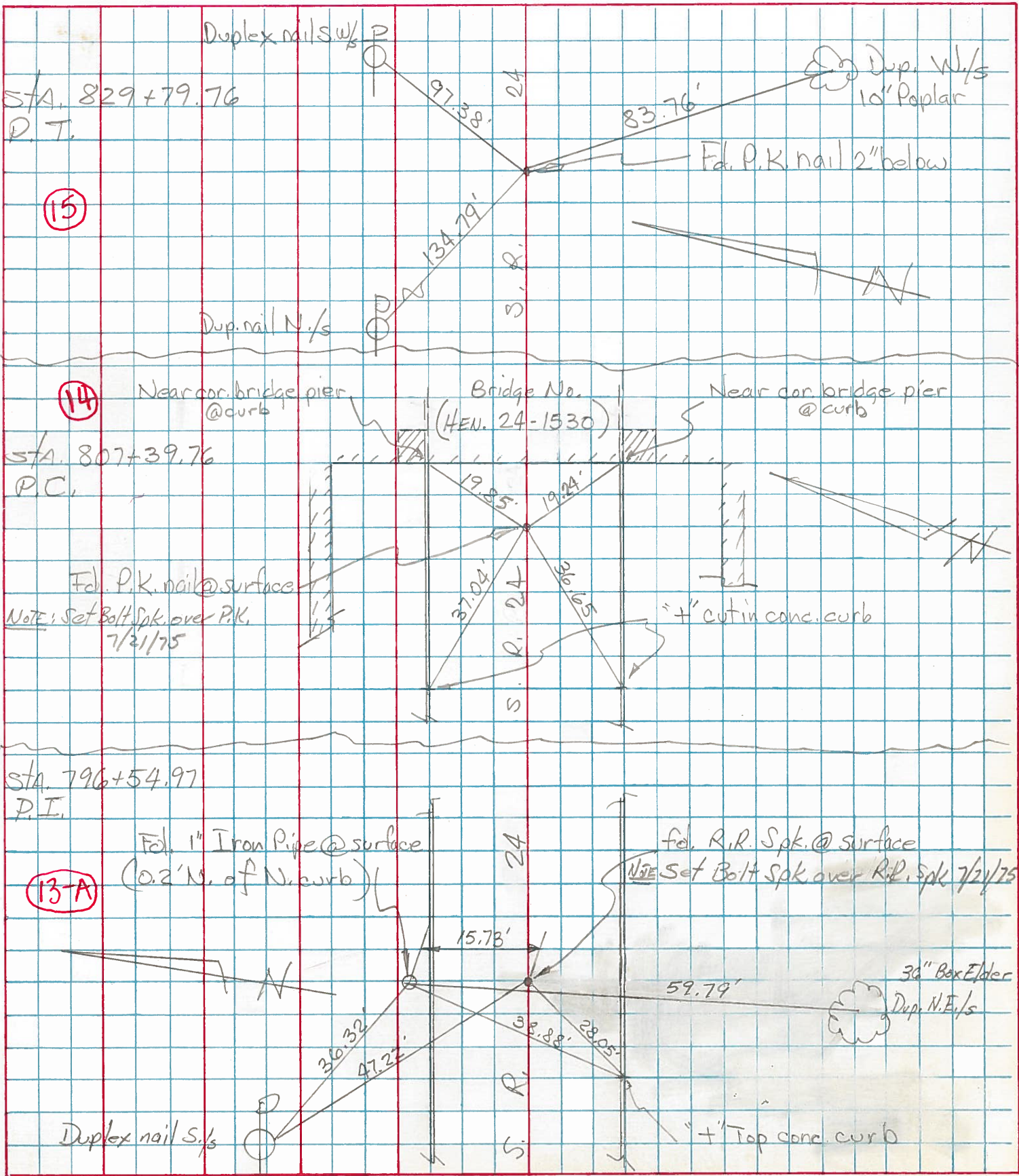
SHINER  
N.E. SIDE  
36" BOXELDER

P.I. STA 796+54.97 REC.

PERSONNEL	TITLE	PERSONNEL	TITLE
Tomsic			
Neuser			
Granata			

COUNTY HEN. DATE JUNE 18, 1975  
 S. R. 24 WEATHER \_\_\_\_\_  
 SEC. LIBERTY TWP. TEMP. \_\_\_\_\_

DESCRIPTION WEST OF S.R. 109 JOB NO. \_\_\_\_\_





PERSONNEL TITLE PERSONNEL TITLE

Beach  
 Puffer  
 Krape  
 Delventhal

COUNTY Henry DATE Apr. 59

S. R. US-24 WEATHER \_\_\_\_\_

SEC. 11.22 TEMP. \_\_\_\_\_

DESCRIPTION £ constr. LEFT CENTER LINE RIGHT JOB NO. \_\_\_\_\_

CURVE # 9

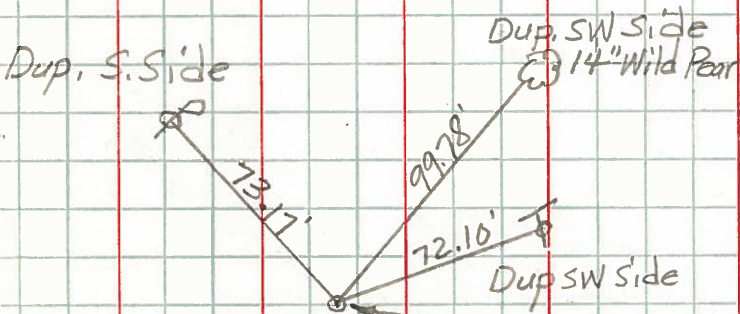
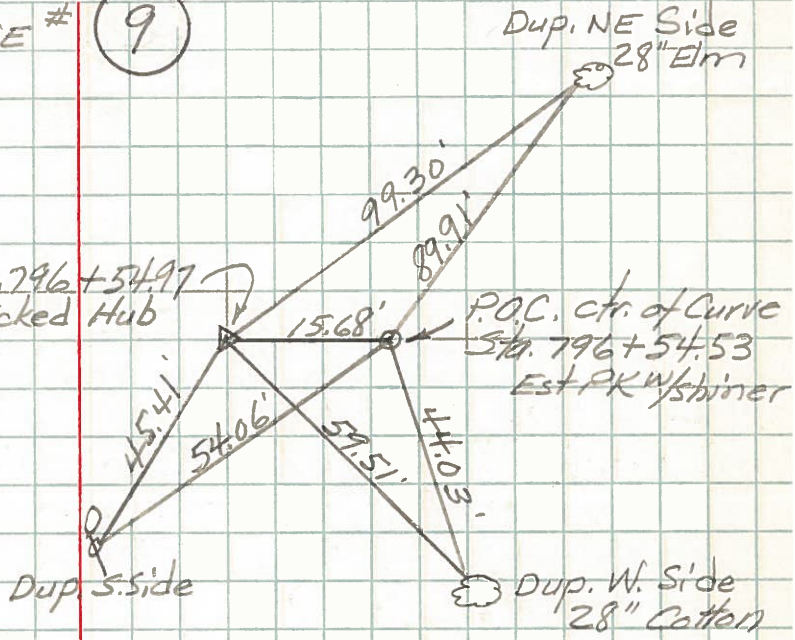
P.I. Sta. 796+54.97

$\Delta - 4^{\circ}53\frac{1}{2}$  Rt.  
 D -  $0^{\circ}20'$   
 T - 734.19'  
 L - 1467.50'  
 E - 15.68'  
 R - 17188.64

P.C. Sta. 789+20.78  
 P.T. Sta. 803+88.28

P.I. Sta. 796+54.97  
 Est. Tacked Hub

P.O.C. ctr. of Curve  
 Sta. 796+54.53  
 Est. P.K. w/shiner



P.C. Sta. 789+20.78  
 Est. P.K. w/shiner

